



Parts Manual



Classic Leaf Blower

Series Walk-Behind Blowers

5.5HP Product

Mfg. No.	Description
1694500	Leaf Blower, Walk-Behind 5.5HP, Briggs & Stratton

6.5HP Product

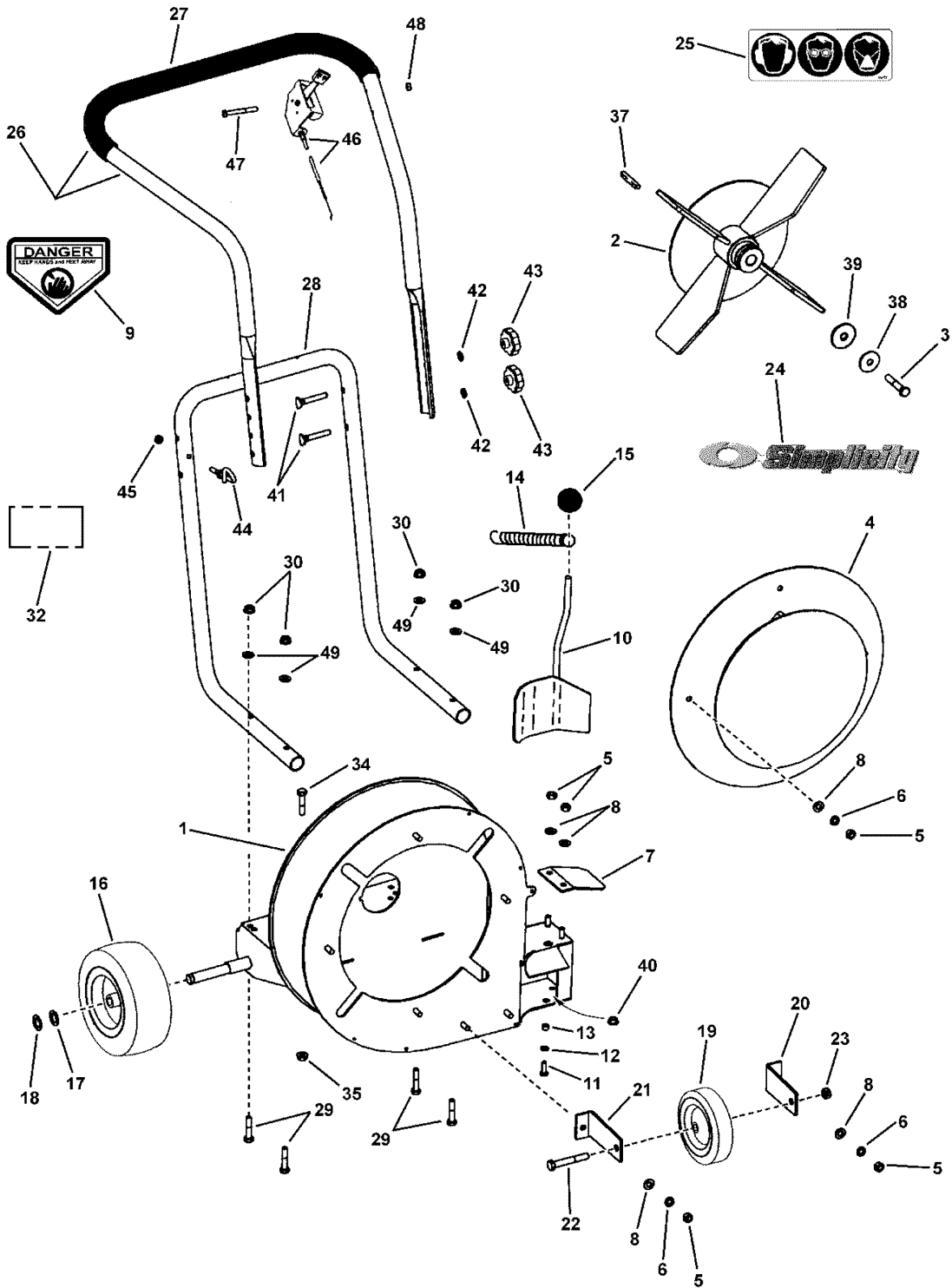
Mfg. No.	Description
1694581	Leaf Blower, Walk-Behind 6.5HP, Briggs & Stratton

PRODUCT COMPONENTS	PAGES
Illustrated Parts List	4
Torque Specification Chart	Inside Back Cover

Illustrated Parts List

NOTE: Unless noted otherwise, use the standard hardware torque specification chart.

1774\smlbc_s1



The above parts group applies to the following Mfg. Nos.:

1694581 - Leaf Blower

1694500 - Leaf Blower

Illustrated Parts List

REF NO	PART NO.	QTY.	DESCRIPTION
1	3010003	1	WELDMENT, Base & Housing 52 Classic
2	3021506	1	WELDMENT, Impeller Steel 4 Blade 15.00 O.D.
3	7090167	1	CAPSCREW, 3/8-24 x 2 Hex Head, GR5
4	3020234	1	WELDMENT, Intake Baffle
5	7091511	8	NUT, 5/16-18 Hex, GR5 or B
6	7091315	10	WASHER, 5/16 Split Lock
7	3024507	1	DEFLECTOR, Side Air
8	7090188	8	WASHER, .34 x .69 x .08 Flat
9	7013010	1	DECAL, Danger, Cut Finger
10	3024508	1	WELDMENT, Door Front/Side Discharge
11	7091495	1	CAPSCREW, 1/4-20 x 3/4 Hex Head, GR5
12	7027223	1	WASHER, .263 x .375 x .062 Split Lock
13	3031014	1	BUSHING, Steel Sleeve .250 ID x .375 OD x .25 Long
14	3071782	1	SPRING, Extension (was 3024502)
15	7012659	1	KNOB, #230 Dimco
16	3033001	2	WHEEL & TIRE ASSEMBLY, Sawtooth 4.10/3.50-4 Kenda
--	3033107	4	BALL BEARING, 5/8 x 1-3/8 (not shown, included with Ref. No. 16 each wheel assembly has 2 bearings)
17	7091628	2	WASHER, .64 x .99 x .05 Flat
18	7012763	2	RING, External Retaining (TRU1500-62)
19	3033017	1	WHEEL, 6.00 x 1.50 Semi-Pneumatic
20	3033101	1	BRACKET, Caster - RH
21	3033102	1	BRACKET, Caster - LH
22	7091501	1	CAPSCREW, 3/8-16 x 2-1/2 Hex Head, GR5
23	7091585	1	NUT, 3/8-16 Hex Center Lock, GR5 or B
--	3033003	1	ASSEMBLY, Front Caster (Includes Ref. No. 19 thru 23)
24	1722551	1	DECAL, Simplicity Logo
25	7075893	1	DECAL, Personal Protection
26	3023270	1	ASSEMBLY, Upper Handle & Grip - Narrow (p/n 3033876 + grip)
27	7074422	1	GRIP, 1.0 x 21-1/2 Foam
28	7033877	1	HANDLE, Lower Folding- Narrow- Blower
29	7091908	4	CAPSCREW, 5/16-18 x 1-3/4 Hex Head, GR5
30	7091298	4	NUT, 5/16-18 Hex Nyloc
31	*	1	ENGINE, 6 HP Briggs & Stratton Intek (not shown) Model 126312, Type 0163-E2
32	**	1	DECAL, 5.5 HP Briggs & Stratton
33	7033874	1	DECAL, Thrown Objects, Large (not shown)
34	7091540	4	CAPSCREW, 5/16-18 x 1-1/2 Hex Head, GR5 (Engine Mounting Hardware)
35	7091601	4	NUT, 5/16-18 Hex Flange Lock, GR5 (Engine Mounting Hardware)
36	7090517	1	WASHER, 3/8 Flat (not shown, Left Front Engine Mounting Bolt)
37	7010210	1	KEY, 1/4 Square x 2
38	7012063	1	WASHER, .411/.406 I.D. Cone
39	7091962	1	WASHER, .468 x 1.625 x .25 Flat
40	3031220	1	BUSHING, Flanged .375 x .500 x .25 (.625 x .063 Flange)
41	7091189	4	CARRIAGE BOLT, 5/16-18 x 2, GR2
42	7090391	4	WASHER, 5/16 Internal Tooth Lock

Footnotes

* See your local Briggs & Stratton distributor for parts and service.

** Not a service part.

The above parts group applies to the following Mfg. Nos.:

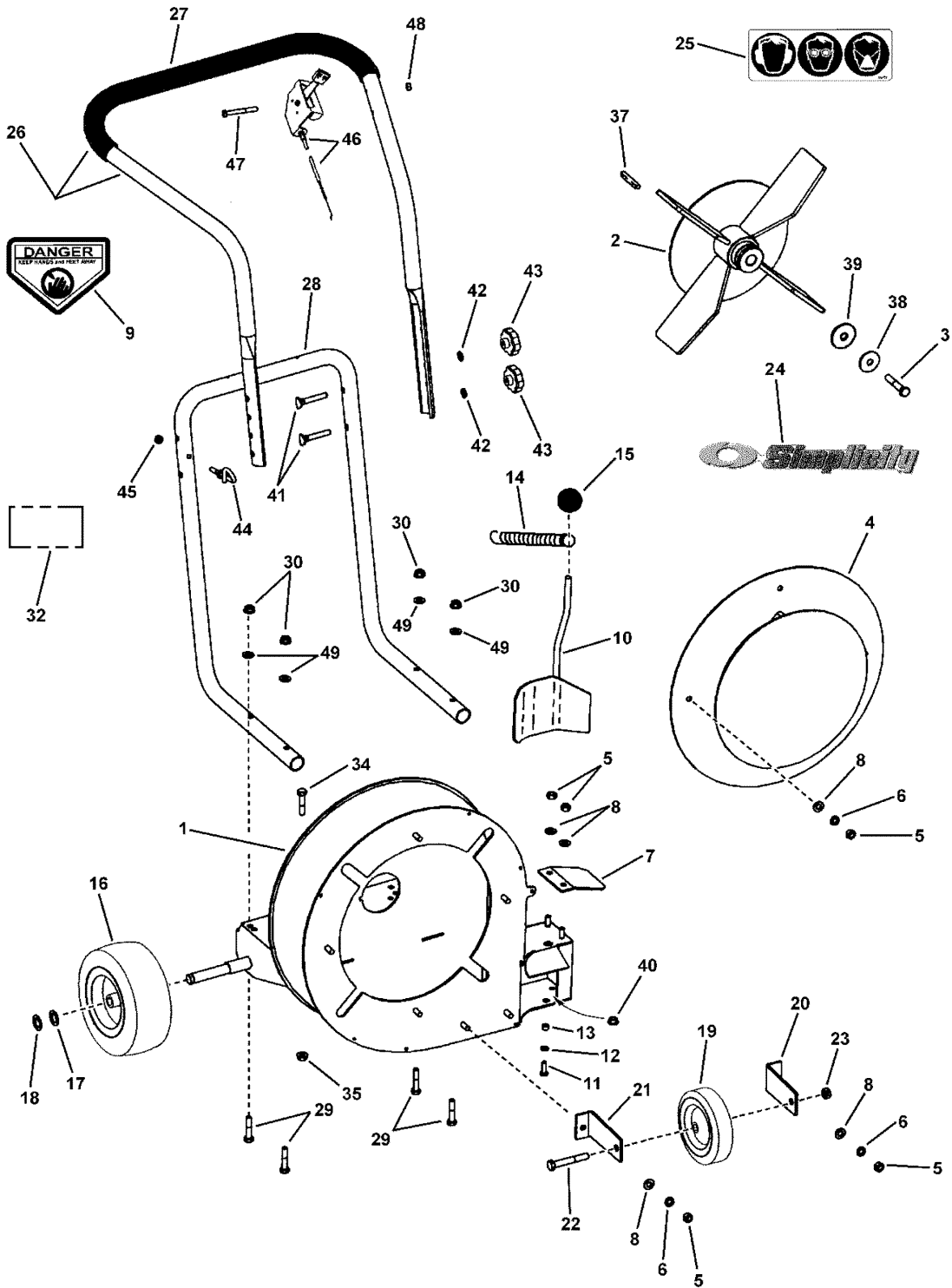
1694581 - Leaf Blower

1694500 - Leaf Blower

Illustrated Parts List

NOTE: Unless noted otherwise, use the standard hardware torque specification chart.

1774\smlbc_s1



The above parts group applies to the following Mfg. Nos.:

1694581 - Leaf Blower

1694500 - Leaf Blower

Illustrated Parts List

REF NO	PART NO.	QTY.	DESCRIPTION
43	3071776	4	KNOB, Folding Handle
44	7046465	1	GUIDE, Rope
45	7090372	1	NUT, 1/4-20 Hex Center Lock, GR5 or B
46	3071800	1	THROTTLE CONTROL, Briggs & Stratton
47	7090505	1	CAPSCREW, 1/4-20 x 2 Hex Head, GR5
48	7076978	1	NUT, 1/4-20 Hex Nyloc
49	1717312	4	WASHER, 5/16 Curved
50	7033686	1	DECAL, Warning- Leaf Blower (not shown)

Footnotes

* See your local Briggs & Stratton distributor for parts and service.

** Not a service part.

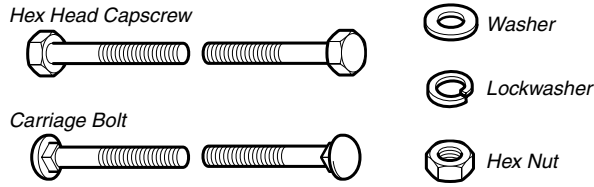
The above parts group applies to the following Mfg. Nos.:

1694581 - Leaf Blower

1694500 - Leaf Blower

Hardware Identification & Torque Specifications

Common Hardware Types

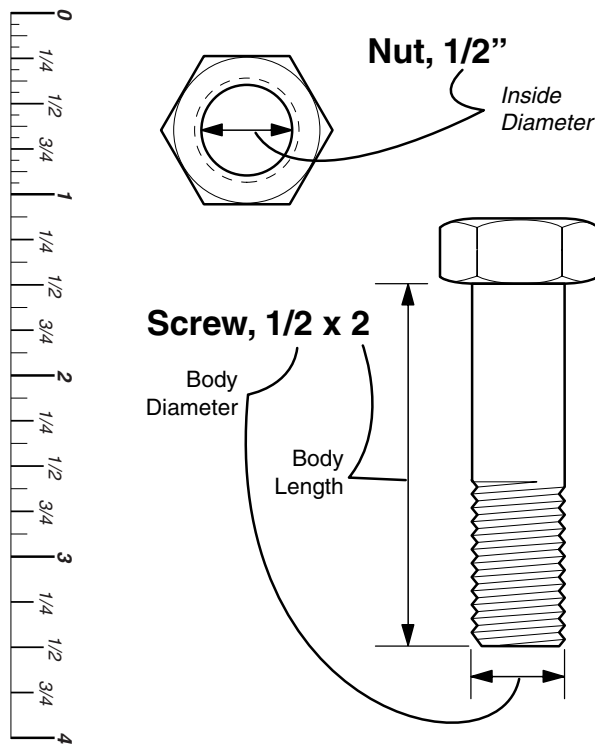


Standard Hardware Sizing

When a washer or nut is identified as 1/2", this is the *Nominal size*, meaning the *inside diameter* is 1/2 inch; if a second number is present it represents the *threads per inch*

When bolt or capscrew is identified as 1/2 - 16 x 2", this means the *Nominal size*, or *body diameter* is 1/2 inch; the second number represents the *threads per inch* (16 in this example, and the final number is the *body length* of the bolt or screw (in this example 2 inches long).

The guides and ruler furnished below are designed to help you select the appropriate hardware and tools.



Torque Specification Chart						
FOR STANDARD MACHINE HARDWARE (Tolerance ± 20%)						
Hardware Grade	No Marks SAE Grade 2		SAE Grade 5		SAE Grade 8	
	in/lbs ft/lbs	Nm.	in/lbs ft/lbs	Nm.	in/lbs ft/lbs	Nm.
8-32	19	2.1	30	3.4	41	4.6
8-36	20	2.3	31	3.5	43	4.9
10-24	27	3.1	43	4.9	60	6.8
10-32	31	3.5	49	5.5	68	7.7
1/4-20	66	7.6	8	10.9	12	16.3
1/4-28	76	8.6	10	13.6	14	19.0
5/16-18	11	15.0	17	23.1	25	34.0
5/16-24	12	16.3	19	25.8	27	34.0
3/8-16	20	27.2	30	40.8	45	61.2
3/8-24	23	31.3	35	47.6	50	68.0
7/16-14	30	40.8	50	68.0	70	95.2
7/16-20	35	47.6	55	74.8	80	108.8
1/2-13	50	68.0	75	102.0	110	149.6
1/2-20	55	74.8	90	122.4	120	163.2
9/16-12	65	88.4	110	149.6	150	204.0
9/16-18	75	102.0	120	163.2	170	231.2
5/8-11	90	122.4	150	204.0	220	299.2
5/8-18	100	136	180	244.8	240	326.4
3/4-10	160	217.6	260	353.6	386	525.0
3/4-16	180	244.8	300	408.0	420	571.2
7/8-9	140	190.4	400	544.0	600	816.0
7/8-14	155	210.8	440	598.4	660	897.6
1-8	220	299.2	580	788.8	900	1,244.0
1-12	240	326.4	640	870.4	1,000	1,360.0

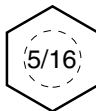
NOTES

- These torque values are to be used for all hardware excluding: locknuts, self-tapping screws, thread forming screws, sheet metal screws and socket head setscrews.
- Recommended seating torque values for locknuts:
 - for prevailing torque locknuts - use 65% of grade 5 torques.
 - for flange whizlock nuts and screws - use 135% of grade 5 torques.
- Unless otherwise noted on assembly drawings, all torque values must meet this specification.

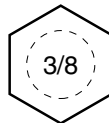
Wrench & Fastener Size Guide



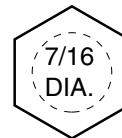
1/4" Bolt or Nut
Wrench—7/16"



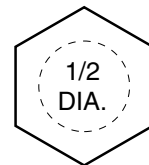
5/16" Bolt or Nut
Wrench—1/2"



3/8" Bolt or Nut
Wrench—9/16"



7/16" Bolt or Nut
Wrench (Bolt)—5/8"
Wrench (Nut)—11/16"



1/2" Bolt or Nut
Wrench—3/4"

Simplicity

MANUFACTURING, INC.
500 N. Spring Street / PO Box 997
Port Washington, WI 53074-0997 USA

www.simplicitymfg.com

© Copyright 2004 Simplicity Manufacturing, Inc.
All Rights Reserved. Printed In USA.

