

Shark®

OWNER'S GUIDE

SC637

SC637C



U.S.: EURO-PRO Operating LLC
Boston, MA 02465

Canada: EURO-PRO Operating LLC
4400 Bois Franc
Ville St. Laurent, Québec H4S 1A7

1-800-798-7398

www.sharkcompany.com

COPYRIGHT© EURO-PRO OPERATING LLC 2009

PRINTED IN CHINA REV. 090505

Illustrations may differ with actual product.

ONE (1) YEAR LIMITED WARRANTY

EURO-PRO Operating LLC warrants this product to be free from defects in material and workmanship for a period of one (1) year from the date of the original purchase, when utilized for normal household use, subject to the following conditions, exclusions and exceptions.

If your appliance fails to operate properly while in use under normal household conditions within the warranty period, return the complete appliance and accessories, freight prepaid. For Customer Service support, call 1 (800) 798-7398 or visit our website www.sharkcompany.com.

If the appliance is found to be defective in material or workmanship, **EURO-PRO Operating LLC** will repair or replace it free of charge. Proof of purchase date and \$ 9.95 to cover the cost of return shipping and handling must be included. *

The liability of **EURO-PRO Operating LLC** is limited solely to the cost of the repair or replacement of the unit at our option. This warranty does not cover normal wear of parts and does not apply to any unit that has been tampered with or used for commercial purposes. This limited warranty does not cover damage caused by misuse, abuse, negligent handling or damage due to faulty packaging or mishandling in transit. This warranty does not cover damage or defects caused by or resulting from damages from shipping or repairs, service or alterations to the product or any of its parts, which have been performed by a repair person not authorized by **EURO-PRO Operating LLC**.

This warranty is extended to the original purchaser of the unit and excludes all other legal and/or conventional warranties. The responsibility of **EURO-PRO Operating LLC** if any, is limited to the specific obligations expressly assumed by it under the terms of the limited warranty. **In no event is EURO-PRO Operating LLC** liable for incidental or consequential damages of any nature whatsoever. Some states/provinces do not permit the exclusion or limitation of incidental or consequential damages, so the above may not apply to you.

This warranty gives you specific legal rights, and you may also have other rights which vary from state to state or province to province.

***Important: Carefully pack item to avoid damage in shipping. Be sure to include proof of purchase date and to attach tag to item before packing with your name, complete address and phone number with a note giving purchase information, model number and what you believe is the problem with item. We recommend you insure the package (as damage in shipping is not covered by your warranty). Mark the outside of your package "ATTENTION CUSTOMER SERVICE". We are constantly striving to improve our products, therefore the specifications contained herein are subject to change without notice.**



OWNERSHIP REGISTRATION CARD FOR CANADIAN CONSUMERS ONLY

Please complete and return within ten (10) days of purchase. The registration will enable us to contact you in the event a product defect is discovered. By returning this card you acknowledge to have read and understood the instructions for use, and warnings set forth in the accompanying instructions.

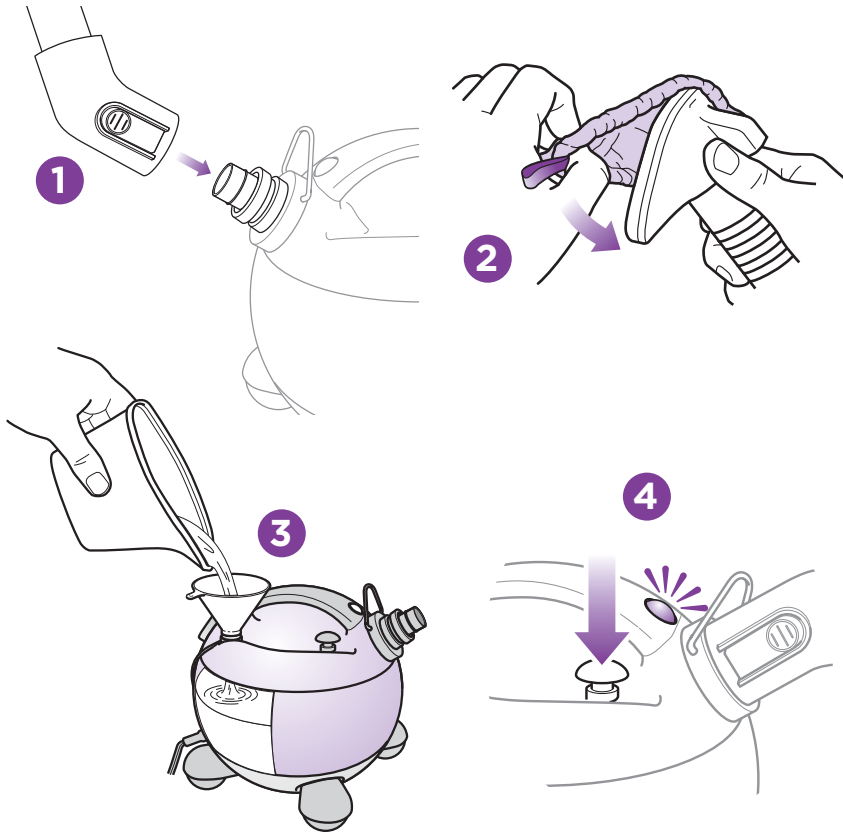
RETURN TO: **EURO-PRO Operating LLC**, 4400 Bois Franc, St. Laurent, Quebec H4S 1A7

PURCHASER:

ADDRESS:

DATE OF PURCHASE: MODEL: **SC637 SC637C**

NAME AND ADDRESS OF STORE:



ASSEMBLE

- 1 Insert the steam hose into the steam hose connector.
- 2 Attach the steam nozzle bonnet over the steam nozzle.

FILL

- 3 Remove the water tank cap. Fill the water tank to the "Max Fill" line using the filling flask and funnel. Do not overfill the tank. Replace the water tank cap and secure.

STEAM

- 4 Plug in the garment steamer, press the switch to the "On" position.
- 5 Hold the steam nozzle directly onto the clothing. Start steaming your garment in an up and down vertical motion while holding the garment.

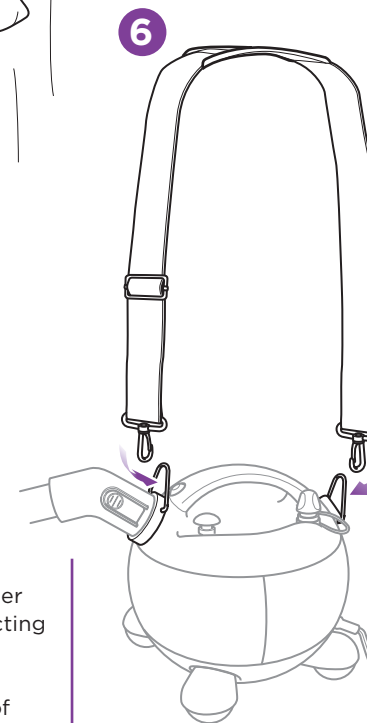
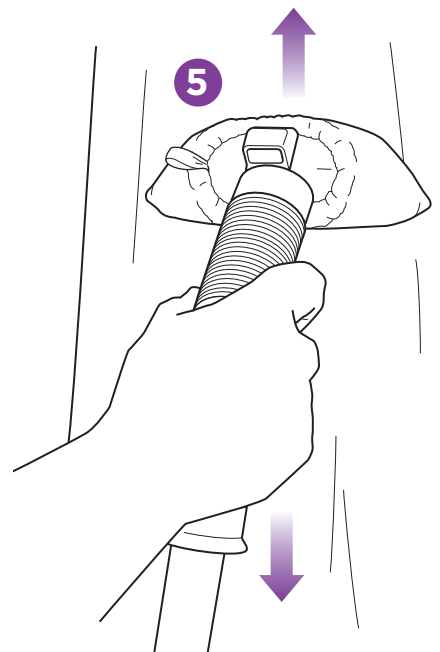
⚠ IMPORTANT: Never steam any article of clothing while it is being worn.



PROBLEM	POSSIBLE REASONS	SOLUTIONS
There is no steam.	<p>The steamer is not turned on.</p> <p>There is not enough water in the unit.</p>	<p>Verify that the green light on the unit is lit. If not, check that the unit is plugged in and the on/off button is raised and in the "On" position.</p> <p>Verify that the water line is above the "Refill" line. If not, add more water to the tank.</p>
There is not enough steam.	<p>There is condensation buildup in the hose.</p> <p>There is not enough water in the unit.</p>	<p>Lift the nozzle so that the hose is vertical for a few minutes or until steam starts again.</p> <p>Verify that the water line is above the "Refill" line, if not add more water to the tank.</p>
The nozzle leaves water drops on the garment.	<p>You are not using the steam bonnet.</p> <p>The steam bonnet is too wet.</p> <p>There is condensation buildup in the hose.</p>	<p>It is recommended to use the steam bonnet on the nozzle to prevent water drops being left on the garment and to improve performance.</p> <p>After letting the steam nozzle cool, remove the steam bonnet and let it dry out before using again.</p> <p>Lift the nozzle so that the hose is vertical for a couple minutes or until steam starts again.</p>
A gurgling or bubbling noise is coming from the hose or unit.	<p>There is condensation buildup in the hose.</p>	<p>Lift the nozzle so that the hose is vertical for a couple minutes or until steam starts again. It is recommended that the hose is vertical during use.</p>

TIPS

Hang the nozzle on the door hook while the garment steamer is heating up.

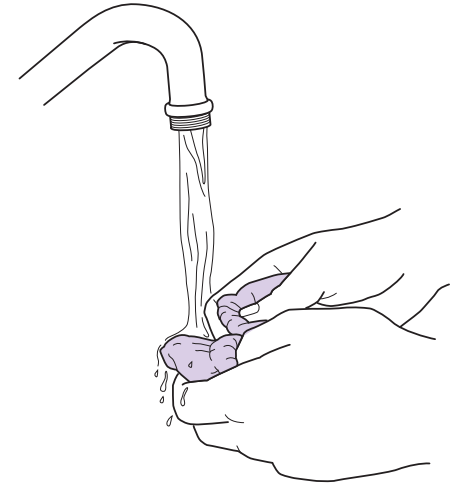
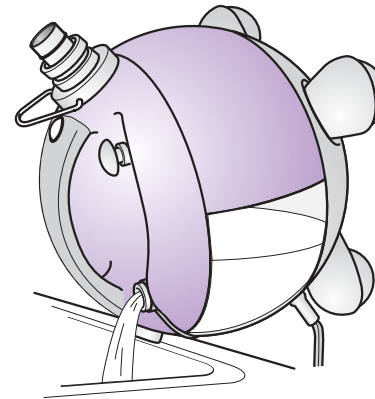


STRAP IN

6 OPTIONAL: Snap the shoulder strap hooks onto the connecting rings on the unit body. The detachable shoulder strap allows for greater freedom of movement when both hands are needed for various steaming tasks.

! IMPORTANT: Hose, nozzle and accessories can become hot during use. Scalding or burns may occur from coming into contact with hot water or steam.

! IMPORTANT: Empty the water from the water tank after every use



TECHNICAL SPECIFICATIONS

Voltage: 120V., 60Hz.

Power: 1000 Watts

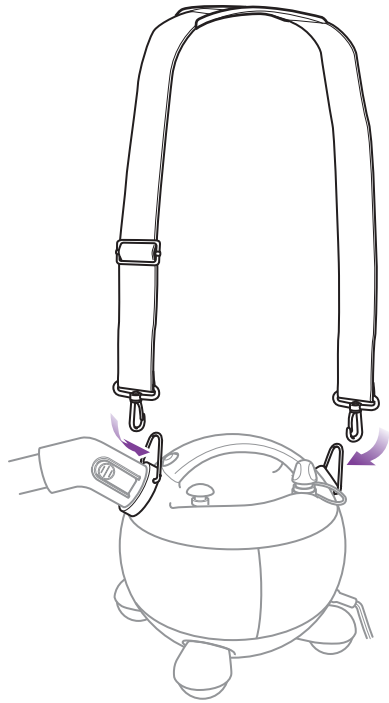
Water Capacity: 510 ml (17 oz.)

CLEANING & STORING

- 1 Turn the garment steamer off.
- 2 Make sure the steam nozzle is placed on the door hanger to avoid condensation.
- 3 Unplug the appliance from the electrical outlet.
- 4 Let the appliance cool completely for approximately 30 minutes before emptying the water from the water tank.
- 5 Empty the water from the water tank.
- 6 Wipe the exterior of the garment steamer with a damp cloth and wipe dry. Always store your appliance indoors in a cool, dry area.

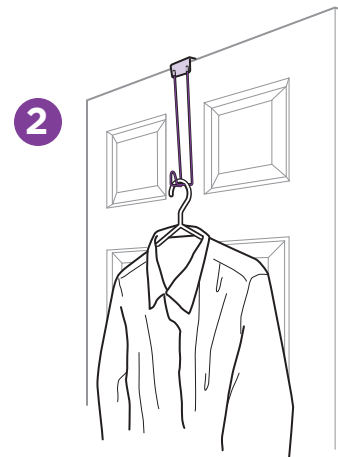
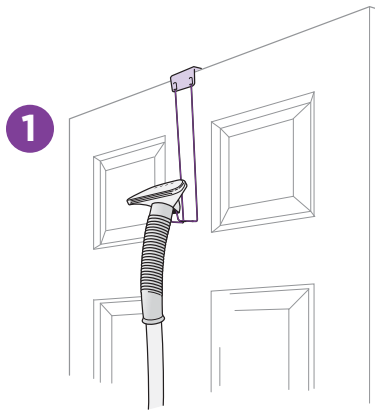
CARE & USE OF STEAM NOZZLE BONNET

It is recommended that the steam nozzle bonnet be removed from the steam nozzle after the appliance has completely cooled. Hand wash the bonnet in cold water with a mild detergent after each use and let air dry completely before using again. Do not dry in clothes dryer.



SHOULDER STRAP

Using the detachable shoulder strap allows for greater freedom of movement when both hands are needed for various cleaning tasks. To attach the shoulder strap to the steam cleaner, simply snap the shoulder strap hooks onto the connecting rings on the unit body.



DOOR HOOK

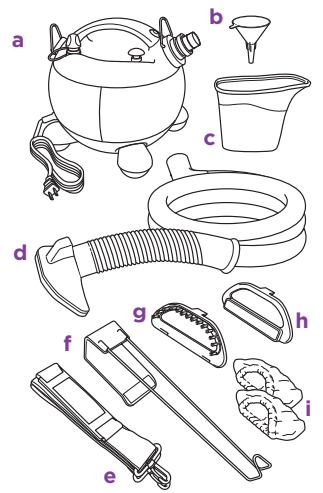
1. The steam nozzle should be hung on the door hook with the steam vents pointing away from the door while unit is heating up. When the unit emits steam, remove the steamer head and place your garment onto the hanger head.
2. Use the door hook to rest the steam nozzle to avoiding condensation build up.

Thank you for purchasing the Shark Garment Steamer.

GETTING STARTED	2
USING YOUR GARMENT STEAMER	5
USING YOUR ACCESSORIES.....	6
CARE OF YOUR GARMENT STEAMER	9
TROUBLESHOOTING GUIDE.....	10
WARRANTY AND REGISTRATION.....	11
NOTES.....	12

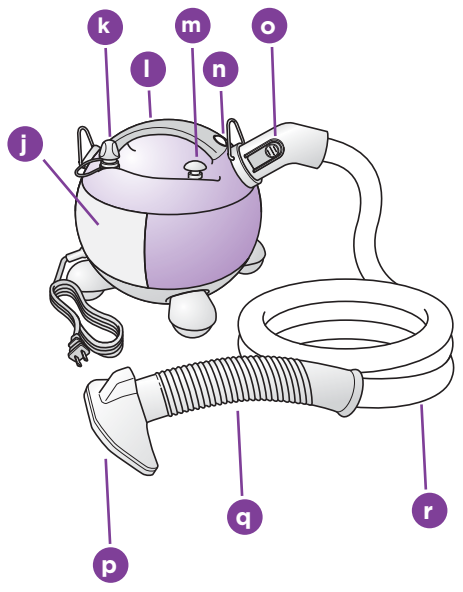
Getting Started

When assembling your garment steamer there may be a little water in or around the water tank. This is because we test all our garment steamers 100% before you buy them, so you get a quality Shark® garment steamer.



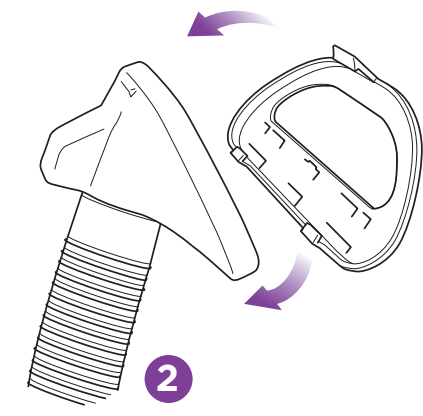
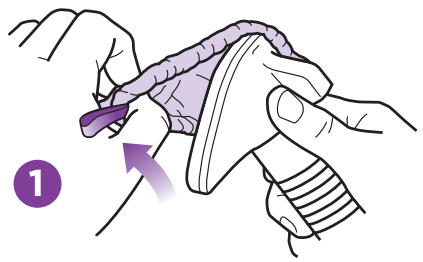
FIRST THINGS FIRST, YOU NEED TO KNOW WHAT'S IN THE BOX YOU JUST OPENED:

- a Garment Steamer
- b Funnel
- c Filling Flask
- d Steam Hose
- e Shoulder Strap
- f Door Hook
- g Garment Brush
- h Lint Brush
- i Steam Nozzle Bonnets (2)



YOUR GARMENT STEAMER FEATURES

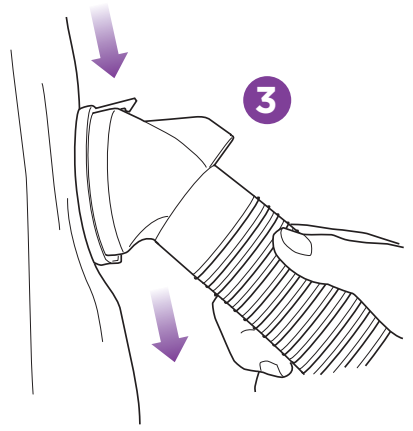
- j Water Tank
- k Filling Inlet
- l Handle
- m On/Off Switch
- n Power "On" Light
- o Steam Hose Release Button
- p Steam Nozzle
- q Hand Grip
- r Steam Hose



LINT BRUSH
Use the lint brush to remove hair, lint and pet fur while steaming your garments.

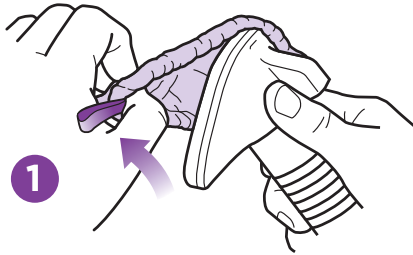
- 1 Remove the steam nozzle bonnet from the steam nozzle.
- 2 Attach the lint brush attachment onto the steam nozzle by lining up the bottom of the steam nozzle with the back of the lint brush attachment.
Then gently push the top of the lint brush up into place until the lint brush snaps in place.

TIPS
Always determine the color-fastness of any fabric before using the garment steamer by testing it on a small portion of the garment's underside.



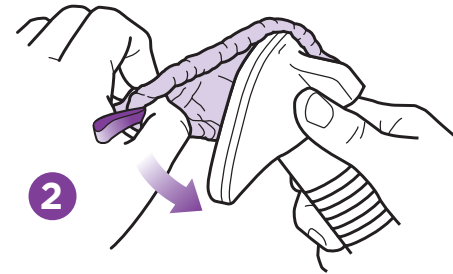
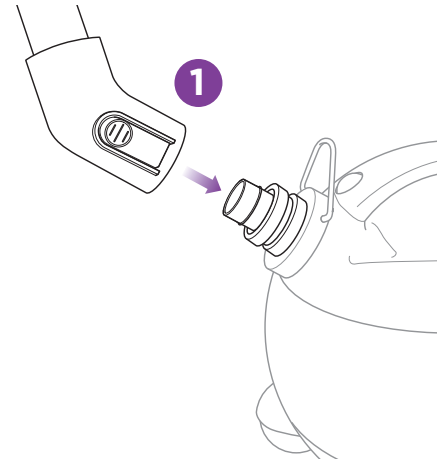
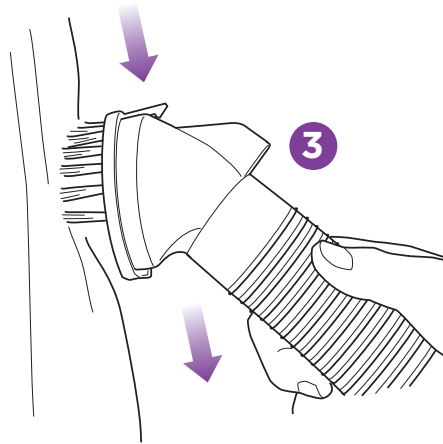
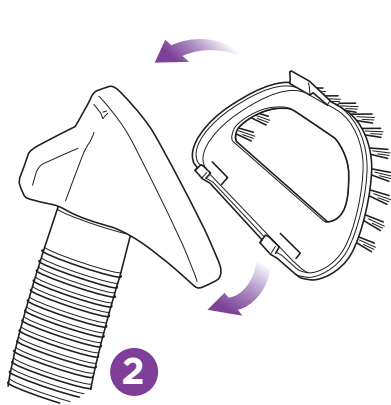
- 3 Gently brush the area that is to be steamed going with the grain or the nap of the fabric.
- 4 The lint brush attachment can be cleaned by brushing in the opposite direction onto a disposable old piece of cloth.
- 5 When finished using the lint brush attachment, unplug the garment steamer and let it cool completely before removing the lint brush attachment.





IMPORTANT: Make sure that the garment steamer is unplugged and completely cool before attaching or removing any accessories.

TIPS
Use the steam bonnet on the nozzle to prevent water drops from being left on the garment and to improve performance.



GARMENT BRUSH

Use the garment brush to open the weave of the fabric for better steam penetration.

- 1 Remove the steam nozzle bonnet from the steam nozzle.
- 2 Attach the garment brush attachment onto the steam nozzle by lining up the bottom of the steam nozzle with the back of the garment brush attachment.

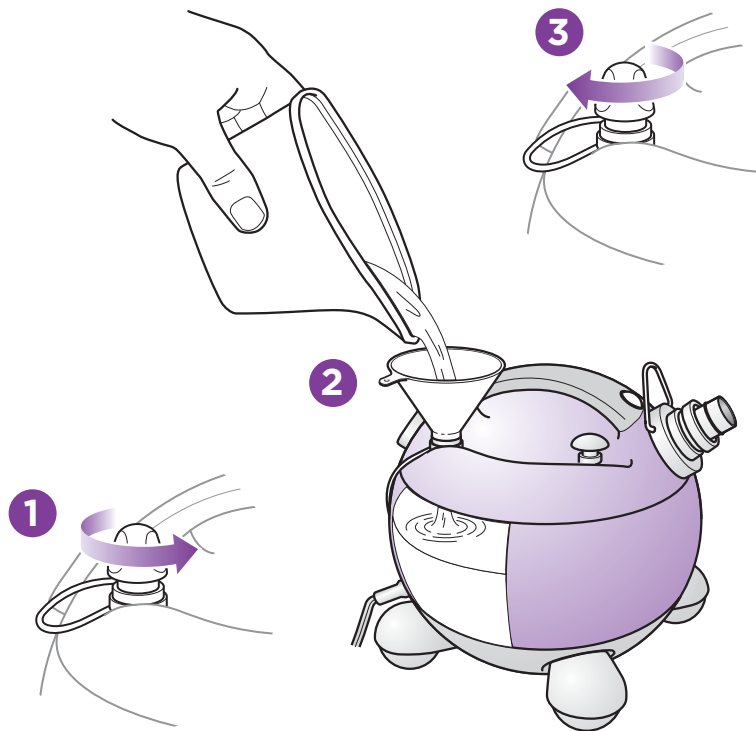
Then gently push the top of the garment brush up into place until the garment brush attachment snaps in place.

- 3 Gently brush the area that is to be steamed going with the grain or the nap of the fabric.
- 4 When finished using the garment brush attachment, unplug the garment steamer and let it cool completely before removing the garment brush attachment.

ASSEMBLY

- 1 Remove the appliance and the accessories from the packaging. Insert the steam hose into the steam hose connector.
 - 2 Attach the steam nozzle bonnet over the steam nozzle.
- IMPORTANT:** Do not plug in or turn the appliance "On" until assembly is completed.

- IMPORTANT:** Hose, nozzle and accessories can become hot during use. Never hold, pull or relocate the appliance by the hose. Hold the steamer head by the hand grip and never by the hose.

**FILLING THE WATER TANK**

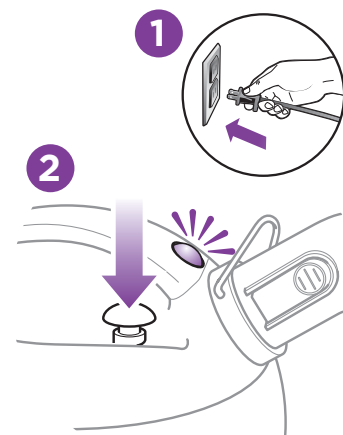
- 1 Remove the cap from the inlet hole.
- 2 Using the filling flask and funnel, fill the water tank with regular tap water up until the “Max” line on the water tank. Use tap water or distilled water if the tap water in your area is very hard. Do not let the water in the water tank go below the refill line.
- 3 Replace the cap on the filling inlet.

⚠ IMPORTANT: Make sure you only add water to the tank. Chemicals or cleaning solution may damage the appliance and could be unsafe for you and your family.

TIPS

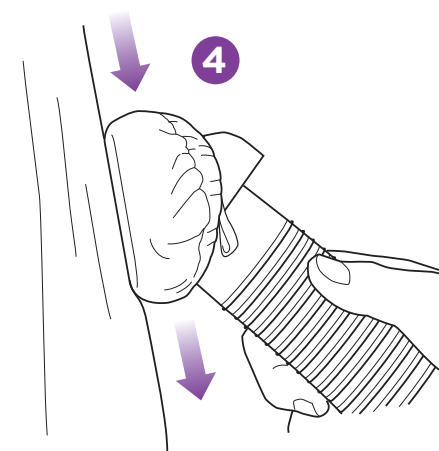
Steam the underside of the garments made of delicate fabrics, like silk or velvet.

Practice makes perfect! It takes time to get used to and master the garment steaming techniques.



⚠ IMPORTANT: Never steam any article of clothing while it is being worn.

- 1 Plug your garment steamer into the electrical wall outlet.
- 2 Press the “On/Off” switch to the “On” position. The power indicator light will illuminate once the garment steamer is turned on.
- 3 Hang the steam nozzle on the door hook. Wait for the steam to come out.



- 4 Holding the steam nozzle with the steam vents pointing away from you, start steaming your garments in an up/down vertical motion. Begin at the top of the garment and move in a downward direction pressing the steam nozzle directly onto the fabric.
- 5 Keep the steam nozzle in an upright position so that no condensation will flow back into the garment steamer.