

REMINGTON®

Smooth & Silky®
TITANIUM
Cleaning System



**Use and
Care Guide**

WDF-7000CS

IMPORTANT SAFETY INSTRUCTIONS

When using an electrical appliance, basic precautions should always be observed, including the following. Read all instructions before using this appliance.

DANGER

To reduce the risk of electric shock:

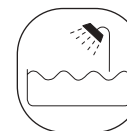
- Do not reach for an appliance that has fallen into water. Unplug it immediately.
- Cleaning base is not for immersion or for use in shower.
- Do not place or store this appliance where it can fall or be pulled into a tub or sink while it is plugged in.
- Except when charging, always unplug this appliance from the electrical outlet immediately after using.
- Unplug this appliance before cleaning it.
- Do not use an extension cord or a voltage converter with this appliance.

WARNING

To reduce the risk of burns, fire, electric shock or injury to persons:

- This appliance is for household use only.
- An appliance should never be left unattended when it's plugged in, except when charging a rechargeable appliance.
- Close supervision is necessary when this appliance is used by, on, or near children or invalids.
- Use this appliance only for its intended use as is described in this manual. Do not use attachments not recommended by manufacturer.
- Keep the cord away from heated surfaces.
- Never operate this appliance if it has a damaged cord or plug, if it is not working properly, if it has been dropped or damaged, or if it has been dropped into water. If any of these things happen, return the appliance to an authorized service center for examination and repair.
- Never drop or insert any object into any of the appliance's openings.

- Do not use outdoors or operate where aerosol (spray) products are being used, or where oxygen is being administered.
- Always store this appliance and cord in a moisture-free area. Do not store it in temperatures exceeding 140°F (60°C).
- Do not plug or unplug this appliance when your hands are wet.
- Do not wrap the cord around the appliance.
- Always attach the plug to the appliance, then to the outlet. To disconnect, turn all controls to OFF, then remove plug from outlet. Detach removable power cords from appliances for storage.
- Do not use this appliance with a damaged or broken screen or cutters, as injury may occur.
- For use only on legs, underarms, and bikini area. Not for use on facial hair or the hair on your head.
- Use the cleaning base only on a level surface.
- Unplug the cleaning base before filling. Fill reservoir with Remington® cleaning solution only. Do not overfill.



The shaver is a wet shaver which may be used in a bath or shower.

SAVE THESE INSTRUCTIONS

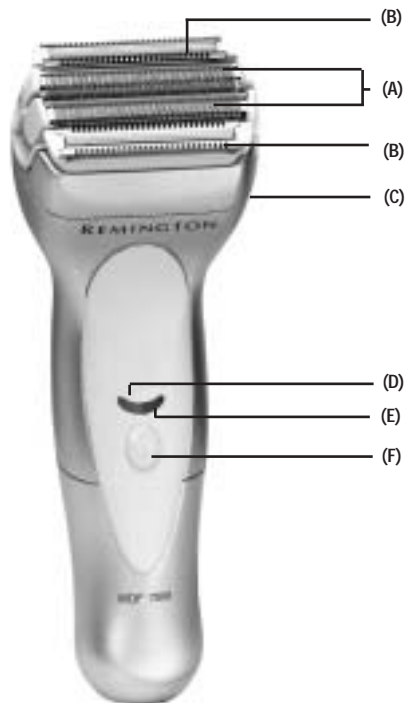
Contents

English4
 Spanish17
 French33

Product Features

Shaver Parts

- (A) Foils
- (B) Trimmers
- (C) Head release button
- (D) Charging indicator
- (E) Low-charge indicator
- (F) ON/OFF button
- (G) Cleaning brush
- (H) Head guard



Smooth&Silky®

Congratulations on your purchase of a Remington® Smooth&Silky® shaver.

Smooth&Silky® is the only women's shaver with a cleaning system that automatically cleans, charges, and renews the shaver every time you use it.

	Power system	Trimmers	Wet/Dry	Indicator Lights		Worldwide voltage
				Charging	Low-charge	
WDF-7000CS	Cordless Rechargeable	2	X	X	X	X

Power System

Cordless rechargeable shavers can only be used without the cord. They do not recharge during use.

Indicator Lights

Charging

The charging indicator is a green light that glows when the shaver is charging or fully charged.

Low-charge

The low-charge indicator is a red light that glows when the shaver needs recharging. You will have approximately 5 minutes of shaving time left when the red indicator first comes on.

Worldwide Voltage

Your shaver can be used almost anywhere in the world, because it has automatic dual voltage conversion, providing AC current between 100-240 volts AC, 50-60 Hz. Just plug it in to the local outlet (you may need an adapter plug) and use as usual.

Product Features (continued)

Cleaning System

The Remington® Smooth&Silky® Cleaning System has been developed to automatically clean, charge, and lubricate your shaver between uses, so you get a fresh shaver every time.

To get the best performance out of your Smooth&Silky® Titanium Shaver, daily cleaning is recommended. Just click the shaver into the base and press the CLEAN button, and the system will automatically take itself through the cleaning and lubricating process.

During cleaning, the system turns the shaver on and off while it jet cleans the shaver head in a specially formulated cleaning/lubricating fluid. The yellow light flashes through the entire 25-minute cleaning cycle and glows steadily when cleaning is completed. The system then automatically enters charging mode. Once your shaver has been fully cleaned and charged, the system shuts itself off, making it an ideal storage unit for your shaver between uses.

The cleaning solution will provide about 25 cleanings under normal circumstances. Like any liquid, the solution is subject to evaporation, especially in hot weather, so the number of cleanings you get may vary. You can minimize evaporation by keeping the cleaning base and the solution out of direct sunlight.

Cleaning Cautions

- Use only the power supply cord supplied with this product.
- To prevent the cleaning solution from spilling, make sure to keep the cleaning base on a flat surface, and be careful not to tip, jolt, or transport the base when it is filled. It's a good idea to avoid placing the unit on polished, lacquered, or any other surface that is susceptible to damage by isopropyl alcohol, just in case the unit does get bumped and its contents spill out.
- Do not place the cleaning base in an enclosed area, like a cabinet, unless it is empty. Always operate and store it in a well ventilated area. Do not store it over radiators.
- The cleaning base contains highly flammable liquid. Keep it away from sources of ignition. Do not smoke near the cleaning base. Keep out of reach of children. Discard cleaning solution bottle after contents have been poured into the cleaning base.
- Do not block fan area on the cleaning base.

Cleaning System Parts

- (A) Shaver
- (B) Cleaning light (yellow)
- (C) Charging light (green)
- (D) Replace solution indicator light (red)
- (E) Cleaning button
- (F) Latch buttons (one on each side)
- (G) Cleaning base
- (H) Cleaning solution bottle
- (I) Filter
- (J) Safety power plug



How to Use

Before using read the important safety instruction section in front of the manual.

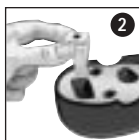
Charging

Your new Smooth&Silky® Titanium should be charged for 24 hours before it can be used for the first time. It can be charged in the cleaning base or by plugging the cord into the shaver directly.

Preparing the System

Adding the cleaning solution:

1. Press the latch buttons on the sides of the cleaning base and lift off the top section. You will need to keep the buttons pressed in as you lift.
2. The cleaning solution tank is in the bottom section. Remove the filter from the tank and set aside.
3. Pour the bottle of cleaning solution into the base of the unit through the opening where the filter was removed. Fill the tank to the bottom of the fill tab.
4. Return the filter back to its original position.



NOTE: It is important to make sure the filter is in place to keep the unit operating properly. The filter collects hair clippings and debris that could permanently clog the system and render it inoperable. Make sure to replace the filter whenever you replace the cleaning solution.

5. Return the top section of the cleaning base by lining up the three tall posts with the three holes in the tank. Push down the top until the two latches click into place.
6. You can dispose of the cleaning solution bottle and cap with your normal trash, or recycle where local ordinances apply.

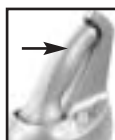
Operating the Charging/Cleaning System

Plug the power cord into the cleaning base and then into an electrical outlet.

Remove the shaver's clear plastic head guard and place the shaver into the unit, head side down. Push the shaver down and slide its "tail" toward the "neck" of the base until it clicks into place.

Charging

Your shaver automatically begins to recharge as soon as it clicks into place in the cleaning base. While it is charging, the green indicator light will flash; when it is fully charged the green light will stop blinking and glow steadily.



Cleaning

To activate cleaning mode, simply press the CLEAN button on the cleaning base. The yellow indicator light flashes through the entire cleaning cycle, which lasts approximately 25 minutes. When the cleaning cycle has been completed, the yellow light will stop blinking and glow steadily. The unit then returns to charging mode.

! Wait until the cleaning cycle has finished before removing the shaver from the base. If the shaver is removed during the cleaning cycle it will be covered with the special cleaning/lubricating solution and will be unusable.

Solution levels

The cleaning solution will slowly evaporate with use. When the solution levels get low, the red replacement indicator light will begin to flash. This means you have enough cleaning solution left for approximately 5 more cleanings. If the red light stops blinking and glows steadily, the unit will not operate until the solution and filter have been replaced.

Replacing the Filter and Solution

Remington® cleaning solution and filters were specially designed for the WDF-7000CS. The cleaning solution contains a high percentage of alcohol and a special oil that lubricates your shaver each time it is cleaned. The filter is specially designed to collect hair debris to keep solution clean.

To refill the cleaning solution and replace the filter, follow the steps for "Preparing the System" above. But before replacing the top of the unit, rinse out the tank with fresh water and allow it to air dry to remove any sediment.

Wipe off the base periodically with a damp cloth and remove any hair debris that has collected where the shaver sits.

! To avoid damage to the cleaning system, use only Remington® special cleaning solution. The Remington® replacement solution and filter, model #CC-100, is sold at many major retailers and online at www.remington-products.com. It can also be ordered by phone at 800-736-4648 in the U.S. or 800-268-0425 in Canada.

To Charge Your Shaver (out of cleaning base)

The WDF-7000CS can also be recharged by plugging the cord into the shaver directly.

- Make sure your shaver is turned off.
- Use only the charging adapter supplied with the shaver.
- Connect the cord to the shaver, then plug the charging adapter into the electrical outlet. The shaver's charging indicator will light.
- Your shaver cannot be overcharged, so you can leave it plugged in and charging between shaves.
- To preserve the life of the batteries, let them fully run out every six months, then recharge them for a full 24 hours.

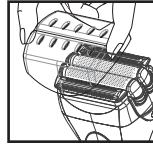
NOTE: If your shaver battery is completely discharged or the shaver has not been used for a long time, charge the shaver for approximately one to two hours before shaving. After done charge for 16 hours for full charge.

Usage Tips

Removing the Headguard

Before operating your shaver, remove the headguard, which protects the screen and cutter assembly. Simply push up from the front or the back until it pops off.

! Always keep the protective head guard on the shaver head and keep the shaver in the OFF position when the shaver is out of the cleaning base and not in use.



Note: In case of accidental separation of shaver head:

To reattach head, hold in the fully open position, direct one of the two hinge pins on the shaver into the corresponding slotted hole on the head assembly, then swing the opposite hinge pin into place.

For assistance or help, call our customer service at 800-736-4648.

Adjusting to your new shaver

As with every shaver, your shave will improve over time. So allow about three weeks to develop an effective shaving style and for your skin to adjust to the new shaver. The adaptation period may take a little longer if your skin is sensitive, or if you alternate between shaving methods.

To help smooth the transition to your new shaver, a special lubricant has been applied to the shaver's screens and cutters. The lubricant looks like fine, white or gray powder, and disappears with use.

To shave

Push the ON/OFF button. Hold the shaver so both screens touch your skin at the same time. This allows the shaver to work the way it was designed for the closest shave and minimum wear. Avoid holding the shaver at an angle so only one screen touches the skin at a time. This will distort the screen and could cause skin irritation.

Never press hard. Pressing only flattens your hairs, making it harder for them to enter the cutting chamber. It will also wear out the cutting surface more quickly.

Using shaver with soap or foam lather

When using soap or foam lather, the shaver will glide smoothly over the skin, cleansing away oil residue while at the same time leaving skin soft and smooth.

Apply the soap or foam generously to the skin. Do not use skin lotion, nourishing cream, or shaving cream of the non-lathering type.

Maintenance

Replacing Screens and Cutters

When is it time to replace your screens and cutters?

Because they are subject to daily use, the screens and cutters of your shaver will wear and eventually require replacement to maintain a close, comfortable shave. It is very important to replace your screens and cutters when necessary to ensure a close, comfortable shave without irritation.

Depending on your shaving technique and habits, the screens will usually last 6 months; the cutters, 12 months. If you are replacing the cutters, it's a good idea to replace the screens at the same time.

Here are some signs that your screens and cutters need replacing:

Irritation: As screens get worn, you may notice that your skin feels more sensitive after a shave.

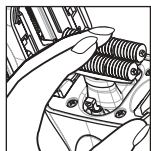
Pulling: As cutters wear, your shave may not feel as close and you may feel your shaver is "pulling" the hairs.

Wear-through: You may notice that the cutters have worn through the screens. To prevent inadvertent damage to the cutters and screens, do not attempt to remove them from the head assembly unless you are replacing them. Removal instructions are included with the cutter and screen replacement packages.

To replace a cutter assembly that is removed unintentionally:

1. Hold the cutter in the middle. The blades will not cut your fingers, so no special handling techniques are necessary.

2. Align the cutter so the little bar on the bottom meets the opening in the clip.
3. Press down on the center of the cutter until it snaps into place. Do not push down on the ends of the cutter, as you may bend the cutter, reducing its ability to cut cleanly.
4. Do not separate the cutter's blades from the plastic pieces they are attached to, as this may damage the assembly.



The replacement part for this shaver is model SP-130 (screens) and SP-132 (screens and cutters).

U.S. residents:
To order shaver accessories call 800-736-4648, visit www.remington-products.com, or visit your local retailer.

Proper Storage

- Keep cleaning base on a flat table surface.
- Do not store over radiators or any surface that is susceptible to damage by isopropyl alcohol.
- Always store this appliance and cord in a moisture-free area.
- Do not place the cleaning base in a cabinet or any other enclosed area unless the solution is empty.
- Do not wrap the cord around the appliance.
- Keep it away from sources of ignition.
- Keep out of reach of children.

12

Disposal

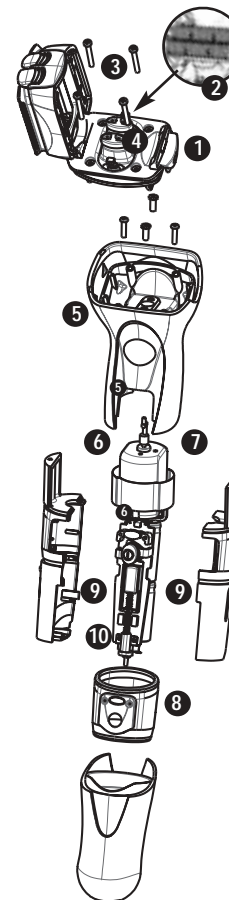
Battery Removal

When your rechargeable shaver reaches the end of its useful life, the batteries must be removed from the shaver and be recycled or disposed of properly in accordance with your state and local requirements. If this is not required by law, you may elect to dispose of the shaver without removing the batteries.

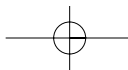
CAUTION: DO NOT PUT IN FIRE OR MUTILATE YOUR BATTERIES WHEN DISPOSING AS THEY MAY BURST OR RELEASE TOXIC MATERIALS. DO NOT SHORT CIRCUIT AS IT MAY CAUSE BURNS. DISPOSE PROPERLY IN ACCORDANCE WITH YOUR LOCAL AND STATE REQUIREMENTS.

HOW TO REMOVE THE BATTERY:

1. Press the head release button to open the shaver's head assembly.
2. Pull the cutters off the cutter drivers that hold them.
3. Use a Phillips head screwdriver to remove the four (4) screws that hold the head assembly in place.
4. Lift the head assembly out of the shaver by grasping the cutter and trimmer drivers, lining them up in the central position, and pulling. Discard.
5. Remove the next four (4) screws, so you can lift the shaver's upper outer shell off the shaver and discard it.
6. Grasp the inner assembly and twist it counter-clockwise to unlatch it from the shaver's lower outer shell. Lift it out, and discard everything else.
7. Cut the tape holding the motor to the inner assembly, and discard it.
8. Cut the large rubber gasket from the inner assembly, and discard it.
9. Separate the two (2) inner shell halves to expose the PC board and battery assembly.
10. Cut the two (2) metal tabs connecting the batteries to the PC board.
11. Pull the batteries free from the adhesive tape, and dispose of properly.



13



Warranty

Warranty Service

In the U.S. and Canada, service is provided by authorized service dealers. For the address of your nearest authorized service dealer, contact us at 800-736-4648 (in U.S.), 800-268-0425 (in Canada), visit our website at www.remington-products.com or consult your local Yellow Pages under "Shaver-Electric-Repair."

KEEP ORIGINAL SALES RECEIPT AS PROOF OF PURCHASE FOR WARRANTY PURPOSES.

Questions or comments:

Call 800-736-4648 in U.S. or 800-268-0425 in Canada. Or visit www.remington-products.com

100-240 VAC 50/60 Hz

REMINGTON and SMOOTH&SILKY are registered trademarks of Rayovac Corporation.

© 2005 Rayovac Corporation.

Job #CS27528 01/05 **T2207730**
U.S. Patent D447,284 and Patents Pending, Canadian Patent 92,979 and Patents Pending.



Rayovac Corporation
800-736-4648

MADE IN CHINA

Rayovac Canada
800-268-0425

Performance Guarantee

Performance Guarantee

Rayovac Money-Back Offer

If within 30 days after you have purchased your Remington® brand product, you are not satisfied with it and would like a refund, just return it, together with the sales receipt, to the retailer from whom it was purchased. Rayovac will reimburse all retailers who accept such appliances within 30 days from date of purchase. If you have any questions regarding this money-back guarantee, please call 800-736-4648 in the U.S. or 800-268-0425 in Canada.

Full Two-Year Warranty

Rayovac® Corporation is a global consumer products company with a diverse portfolio of world-class brands, including Remington®-branded electric shavers. Rayovac® warrants that this product is free from defect in material and workmanship for two years after its original purchase date—except for damage as specified below and these parts meant to be replaced during regular maintenance:

- SHAVERS: head assembly
- SMART SYSTEM: filter

If the product should become defective within the warranty period, Rayovac® will repair it or elect to replace it free of charge. We will return your product, shipping charges prepaid, if you do the following within two years of the purchase date:

1. Return the complete product in person or by mail, postage paid, to Customer Service, Rayovac Corporation, 601 Rayovac Dr., Madison, WI 53711
2. Include the original purchase receipt with the product.
3. Include a description of the problem or defect.
4. Do not return the product to the store that sold it to you.

This warranty does not cover products damaged by the following:

- Accident, misuse, abuse or alteration of it
- Servicing by unauthorized persons
- Use with unauthorized accessories
- Connecting it to incorrect current and voltage

■ Any other conditions beyond our control
No responsibility, obligations, or liability is assumed for the installation or maintenance of this product.

RAYOVAC SHALL NOT BE RESPONSIBLE FOR ANY INCIDENTAL, SPECIAL OR CONSEQUENTIAL DAMAGES RESULTING FROM THE USE OF THIS PRODUCT. USE OF NON-REMINGTON® CLEANING SOLUTION VOIDS THE WARRANTY. ALL IMPLIED WARRANTIES INCLUDING BUT NOT LIMITED TO IMPLIED WARRANTIES OF FITNESS AND MERCHANTABILITY, ARE LIMITED IN DURATION TO TWO YEARS FROM DATE OF ORIGINAL PURCHASE.

This warranty gives you specific legal rights, and you may also have other rights that vary from state to state or province to province. Some states do not allow the exclusion or limitation of incidental or consequential damages, or limitations on how long an implied warranty lasts, so the above limitations and exclusions may not apply to you.

U.S. residents:

To order shaver accessories contact us at 800-736-4648, visit us at www.remington-products.com, or visit your local retailer.

Canadian residents:

To order shaver accessories, please call 800-268-0425 or visit us at www.remington-products.com

