

## Digital Twin Airpot Coffee Brewer

### Features

#### CDBCF Twin Airpot Coffee Brewer

- Brews 15 gallons (56.8 litres) of perfect coffee per hour.
- Brews directly into 1.9 to 3 litre airpots.
- Twin brew head system.
- Hot water faucet.
- Convenient airpots keep coffee hot and fresh for hours.
- Airpots are easily transported to remote meeting rooms, breakfast bars, etc.
- SplashGard® funnel deflects hot liquids away from the hand.
- Digital temperature control and accuracy.
- Quicker install saves up to 30 minutes. Pot level, cold brew lock-out and tank temperature set easily from advanced touch pad on front of machine.
- Electronic diagnostics and built-in tank drain make service easier.
- Coffee extraction controlled with programmable pre-infusion or pulse brew.



#### Model CDBCF Twin APS with Airpots

(airpots sold separately)

Dimensions: 23.5" H x 16" W x 19.7" D  
(59.7cm H x 40.6cm W x 50.0cm D)

For current specification sheets and other information, go to [www.bunn.com](http://www.bunn.com).

### Related Products

**Easy Clear® EQHP-10**  
Product No. : 39000.0004



**Easy Clear® EQHP-10L**  
Product No. : 39000.0001

**Paper Filter Pack**  
Product No. : 20115.0000  
Packed per case: 1,000



Dimensions: 4 1/4" Base x 2 3/4" Sidewall  
10.8 cm Base x 6.98 cm Sidewall

**2.2 liter Push-Button Airpot**  
Product No. : 28696.0002  
Capacity: 74 oz. (2.19 L)



**2.5 liter Push-Button Airpot**  
Product No. : 13041.0001  
Capacity: 84 oz. (2.48 L)

**2.5 liter Lever-Action Airpot**  
Product No. : 32125.0000  
Capacity: 84 oz. (2.48 L)



**3.0 liter Lever-Action Airpot**  
Product No. : 32130.0000  
Capacity: 102 oz. (3.0 L)

**Universal Airpot Racks**  
for push-button and lever-action airpots.  
See page A3.9 for more information.



**Gourmet C Funnel**  
Product No.: 34559.0000 (7.12 inch width)  
34559.0001 (7.62 inch width)

- Universal design – handle may be moved to appropriate side
- Allows brewing with heavier throw weights of coffee.
- Paper Filter Pack  
Product No. : 20100.0000  
Packed per case: 1,000



#### Model

CDBCF Twin APS

#### Agency Listing



## Dimensions & Specifications

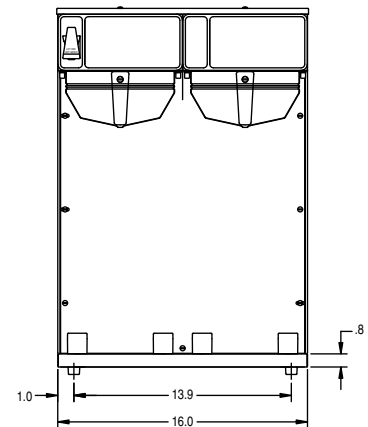
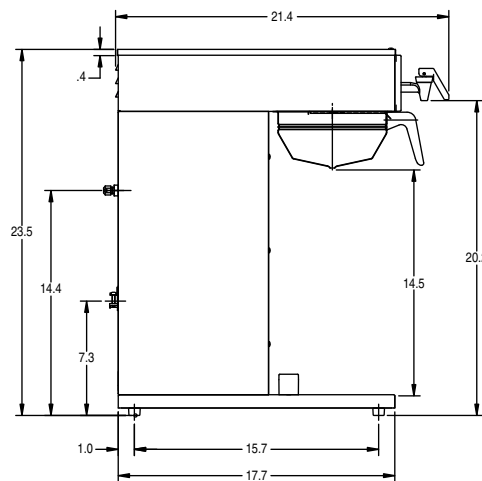
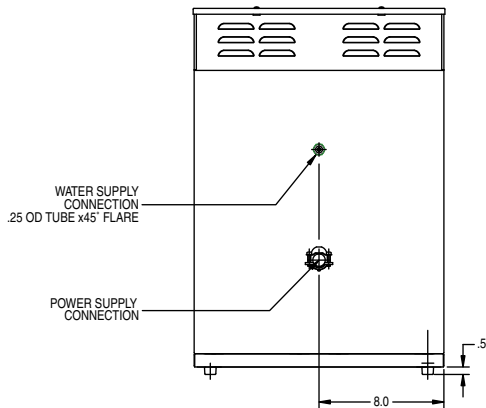
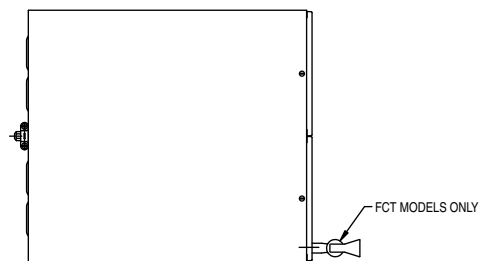
Model	Product #	Volts	Amps	Tank Heater Watts	Total Watts	Brewing Capacity	Cu. Ft.	Shipping Weight	Cord Attached
CDBCF Twin APS	29600.0001	120/240	26	2 @ 3000	6100	15 gal./hr.	7.3	64 lbs.	No

**Brewing capacity:** based upon incoming water temp of 60°F (140°F rise) per 1/2 gallon brew time of 4 minutes.

Models listed as 120/208V or 120/240V must be connected to 208V or 240V electrical service respectively. Please refer to the installation manual.

Electrical: 3-wires plus ground service rated 120/240V, single phase, 60Hz.

Plumbing: 20-90 psi (138-621 kPa). Machine supplied with 3/8" male flare fitting.



Bunn-O-Matic® Corporation - 1400 Stevenson Drive Springfield, Illinois 62703 • 800-637-8606 • 217-529-6601 • Fax 217-529-6644 • www.bunn.com

BUNN® practices continuous product research and improvement. We reserve the right to change specifications and product design without notice. Such revisions do not entitle the buyer to corresponding changes, improvements, additions or replacements for previously purchased equipment.

All dimensions shown in inches. Bunn-O-Matic Corporation owns all copyrights relating to materials in this publication. Please contact BUNN to request permission to reproduce any portion of this publication.