



# BLACK & DECKER®

SAVE THIS USE AND CARE BOOK

## 4-Cup Thermal Carafe Coffeemaker



QUESTIONS? Please call us TOLL FREE!

In U.S.A.: 1-800-231-9786

In Canada: 1-800-465-6070

**MODEL DCM20WH**

# IMPORTANT SAFEGUARDS

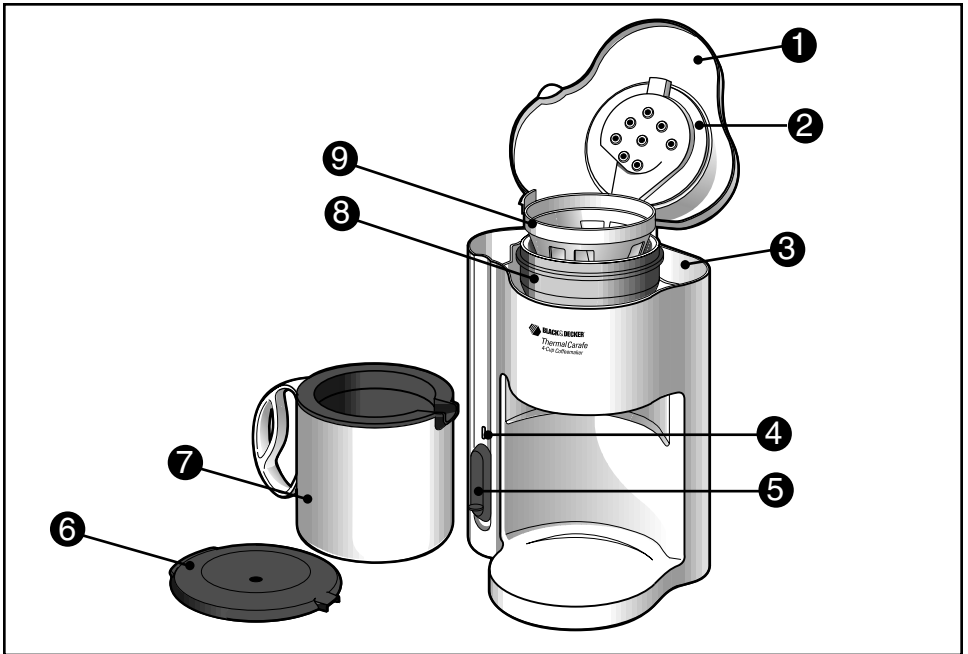
When using electrical appliances, in order to reduce the risk of fire, electric shock, and/or injury, basic safety precautions should always be followed, including the following:

## **READ ALL INSTRUCTIONS.**

- Do not touch hot surfaces. Use handles or knobs.
- To protect against fire, electric shock, or injury, do not place cord, plug, or Coffeemaker base in water or other liquid.
- Close supervision is necessary when any appliance is used by or near children.
- Unplug when Coffeemaker is not in use and before cleaning. Allow to cool before putting on or taking off parts and before cleaning the Coffeemaker.
- Be sure there is water in the reservoir before brewing.
- Do not operate if this appliance or the electrical cord or plug is damaged or after the appliance malfunctions in any manner. Return the Coffeemaker to the nearest Black & Decker, Household Appliance Company-Owned or Authorized Service Center for examination, repair, or adjustment.
- To avoid an electrical overload, do not operate another high-wattage appliance on the same circuit with this Coffeemaker.
- The use of an accessory not approved for operation with this Coffeemaker may result in fire, electric shock, or injury.
- Do not use outdoors.
- Do not let cord hang over the edge of table or counter, or come in contact with hot surfaces.
- Do not place carafe on or near a hot gas or electric burner or in a heated oven.
- Do not store anything directly on top of the appliance surface.
- Keep the lid on the serving carafe when in use.
- Do not remove carafe from the coffeemaker while liquid is dripping from basket. Allow basket to cool before removing it from the Coffeemaker.
- Do not clean the carafe with cleansers, steel wool, or other abrasives.

- Do not use this Coffeemaker for anything other than its intended use.
- Do not pour liquid other than water or the cleaning solution specified in this manual into the water reservoir.
- Remember to place the carafe on the unit base before brewing.
- Do not operate any electric appliance in the presence of explosive and/or flammable fumes.
- This product is intended FOR HOUSEHOLD USE ONLY and not for commercial or industrial use.

## SAVE THESE INSTRUCTIONS



- |                                     |                         |
|-------------------------------------|-------------------------|
| 1. Flip Up Reservoir Cover with Tab | 6. Carafe Serving Lid   |
| 2. Water Spreader                   | 7. 4-Cup Thermal Carafe |
| 3. Water Reservoir                  | 8. Filter Basket        |
| 4. Power "On" Light                 | 9. Permanent Filter     |
| 5. Start Lever                      |                         |

## **POLARIZED PLUG**

---

This appliance has a polarized plug—one blade is wider than the other. To reduce the risk of electric shock, this plug will fit into a polarized outlet only one way. If the plug does not fit fully into the outlet, reverse it. If it still does not fit, contact a qualified electrician. Do not attempt to defeat this safety feature by modifying the plug in any way.

---

## **TAMPER-RESISTANT**

---

This appliance is equipped with a tamper-resistant screw to prevent removal of the bottom cover. To reduce the risk of fire or electric shock, do not attempt to remove the bottom cover. There are no user serviceable parts inside. Repair should be done only by authorized service personnel (see Insert Sheet for a list of Black & Decker Company-Owned or Authorized Service Centers).

---

# How To Use

## **PREPARATION FOR USE**

1. Before the first use, remove all stickers, packing material, and literature.
2. Clean the Carafe, Filter Basket, Permanent Filter, and Carafe Lid by washing in hot, sudsy water or in a dishwasher—top rack only. Rinse thoroughly.
3. Brew 4 cups of fresh water through the system as instructed in the **BREWING COFFEE** instructions on the next page, but do not add coffee grounds.

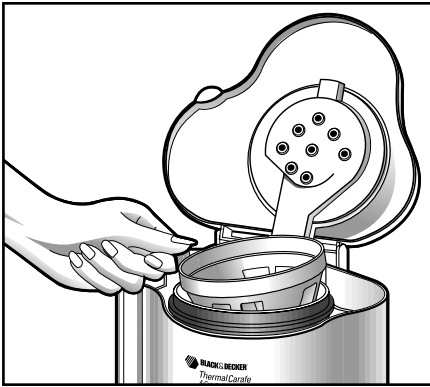


Figure A

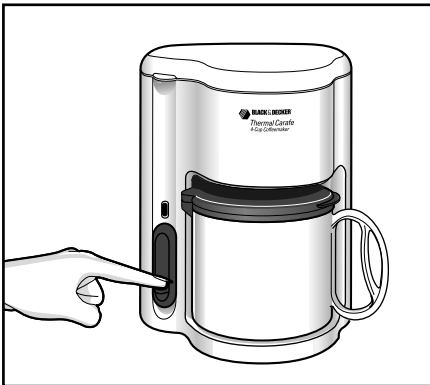


Figure B

## BREWING COFFEE

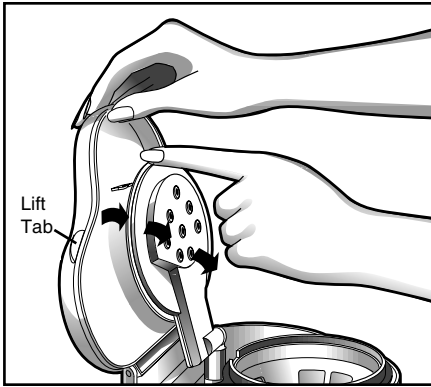
1. Place the Permanent Filter into the Filter Basket. (Figure A) Add drip grind coffee to the filter corresponding to the amount of coffee to be brewed (usually one rounded table-spoon for each 5 oz./150 ml cup. Adjust to suit your taste).

---

**NOTE:** If you prefer, you may place a small cone-shaped paper filter (#2 size) into the Permanent Filter for easy disposal after brewing.

---

2. Use the Carafe to fill the Water Reservoir with cold water to the desired level. Close the flip-up reservoir cover.
3. Place the empty Carafe on the coffeemaker base. Be sure the Carafe Serving Lid is in place.
4. Push down on the Start Lever. The power light will come on and coffee will brew through the Lid into the Carafe. (Figure B).
5. When brewing is done, the Coffeemaker will automatically turn off and the Power "On" light will go out.
6. Let all the brewed coffee drip from the Basket and watch for any hot liquid dripping from the Basket before removing the carafe. Since the carafe has a cool-touch exterior, you can bring it straight from the coffeemaker to table or desk.
7. DO NOT pour brewed coffee back into the Water Reservoir to reheat it. Remove the cover and place the carafe into a microwave to reheat, or pour coffee into a saucepan and heat it on a range. If you are reheating in a



**Figure C**

convection microwave oven, do not use a metal rack. Be careful of scalding from coffee reheated in a high-powered microwave.

8. Your Coffeemaker can also be used to brew hot water for other foods or beverages such as tea, hot chocolate, instant oatmeal, or soups. Be sure the Permanent Filter and Filter Basket have been washed in hot, sudsy water and rinsed well before brewing hot water. Replace the Filter and Basket and repeat the brewing process for hot water.

---

**CAUTION:** Be careful when lifting the flip-up reservoir cover after brewing as this area is hot. Use the Lift Tab on the side of the Cover to open it. Do not look into the Coffeemaker after brewing as steam will be rising.

---

## **CLEANING YOUR COFFEEMAKER**

1. To clean your Coffeemaker after brewing coffee, be sure the unit is OFF and has cooled. Discard the grounds, and clean as follows:

Filter Basket, Permanent Filter, Carafe, and Serving Lid, are all top rack dishwasher-safe; or they may be hand washed in hot, sudsy water.

The Coffeemaker's exterior may be cleaned with a soft damp cloth. Do not use abrasive cleansers or scouring pads. Never immerse the Coffeemaker in water.

The Water Spreader area can be cleaned by carefully unsnapping the spreader from the inside of the Flip-Up Reservoir Cover (*Figure C*).

Wipe the surfaces with a damp cloth. When finished, press the Water Spreader against the Cover to snap it back into place.

### **MINERAL DEPOSITS AND CLOGGING**

Mineral deposits left by hard water can clog your Coffeemaker. It is necessary to regularly clean your Coffeemaker to flush out these deposits. Excessive steaming or a prolonged brewing cycle are signs that a cleaning is needed.

Clean your Coffeemaker approximately every 1-3 months. The frequency of cleaning required is affected by your specific usage and water hardness. You may have to clean the Coffeemaker more or less often.

During cleaning, more steaming may occur than when brewing coffee.

1. Pour 1-1/2 cups (350 ml) of white vinegar into the Water Reservoir and add cold water up to the TOP FILL line.
2. Put the Filter Basket and Permanent Filter in place. Set the empty Carafe securely onto the base of the unit with its Lid in place.
3. Turn the Coffeemaker on.
4. Let half the cleaning solution brew into the Carafe, then turn the Coffeemaker off to soak.
5. Allow the Coffeemaker to remain off for at least 15 minutes to soften the deposits.
6. Turn the Coffeemaker on again to brew the remaining cleaning solution into the Carafe.
7. Turn the Coffeemaker off; discard the cleaning solution.
8. Use the carafe to refill the Reservoir with cold water to the TOP FILL line, replace the empty Basket, Filter, Carafe, and Lid.
9. Turn on the Coffeemaker for a complete brew cycle to flush out the remaining cleaning solution.
10. Wash the Filter Basket, Permanent Filter, Carafe, and Lid as instructed in "Cleaning Your Coffeemaker."

---

## **ELECTRICAL CORD**

The cord length of this Drip Coffeemaker was selected to reduce safety hazards that may occur with a longer cord. If more cord length is needed, an extension cord with a polarized plug may be used. It should be rated not less than 10 amperes, 120 Volts, and have Underwriters Laboratories (in USA) or CSA (in Canada) listing. When using a longer cord, be sure it does not drape over a working area or dangle where it could be pulled on or tripped over. Handle cord carefully for longer life; avoid jerking or straining it at outlet and appliance connections.

---

## **SERVICE OR REPAIR**

Service, if necessary, must be performed by a Black & Decker, Household Appliance Company-Owned or Authorized Service Center in the U.S. or Canada. The Service Center nearest you can be found in the yellow pages of your phone book under "Appliances—Small-Repairing." For your convenience, a listing of our Company-Owned Service Centers can be found on the insert included with this book.

If mailing or shipping your Coffeemaker, be sure to empty water from the reservoir and carafe before packing. Pack it carefully in a sturdy carton with enough packing material to prevent damage. You may use original packaging as long as you include packing material suitable for shipping. Include a note describing the problem to our Service Center and be sure to give your return address. We also suggest that you insure the package for your protection. Consumer-replaceable parts and accessories are available at Black & Decker Household Appliance Company-Owned or Authorized Service Centers in the U.S. or Canada.

---



**FULL  
TWO-YEAR  
WARRANTY**

---

Black & Decker warrants this product against any defects that are due to faulty material or workmanship for a two-year period after the original date of consumer purchase or receipt as a gift. This warranty does not include damage to the product resulting from accident or misuse.

If the product should become defective within the warranty period, we will repair it or elect to replace it free of charge. We will return your product, transportation charges prepaid, provided it is delivered prepaid to any Black & Decker, Household Appliance Company-Owned or Authorized Service Center.

This warranty gives you specific legal rights and you may also have other rights which vary from state to state or province to province.

Answers to any questions regarding warranty or service locations may be obtained by phone or in writing:

In the U.S. A.

Consumer Assistance & Information  
Black & Decker (U.S.) Inc.  
626 Hanover Pike  
Hampstead, MD 21074-0618

Toll-Free Phone Number

1-800-231-9786

In Canada

Consumer Assistance & Information  
Black & Decker Canada Inc.  
100 Central Avenue  
Brockville, Ontario K6V 5W6

Toll-Free Phone Number

1-800-465-6070

---





Listed by Underwriters Laboratories, Inc. and  
Canadian Standards Association  
Copyright ©1995 Black & Decker  
Pub No. 168638-17-RV00  
Printed in People's Republic of China