

Register your product and get support at
www.philips.com/welcome

GoGear

SA3MUS08

SA3MUS16

SA3MUS32



EN User manual

PHILIPS

Contents

1 Important safety information	5	Play a playlist	23
General maintenance	5	Manage media files in Philips Songbird	24
Recycling the product	8	Edit metadata	24
		Get album artwork	24
		Remove media files from the library	25
		Sync the player with Philips Songbird	25
		Select auto or manual sync	26
		Auto sync	26
		Manual sync	27
		Sync photos to the player	27
2 Your new player	10		
What's in the box	10		
Software loaded on the player	10		
Files loaded on the player	10		
3 Get started	11		
Charge power	11		
First-time setup	12		
Switch the player on or off	12		
Automatic standby and shut-down	12		
4 Overview	13		
Controls	13		
Home screen	13		
Navigate on the Home screen	14		
Switch between the Home screen and play screen	14		
Screens	15		
Lock/ unlock the screen	15		
Select the safe volume level	15		
5 Sync with PC media library	16		
Install Philips Songbird	16		
Collect media files from the PC	16		
Set the watch folder	16		
Import media files	18		
Get contents from online sources	18		
Search online	18		
Play online	19		
Add to Philips Songbird	19		
Search in Philips Songbird	19		
Search by metadata	20		
Search by keyword	20		
Create playlists in Philips Songbird	21		
Create a playlist	21		
Generate LikeMusic playlists	22		
Save the play queue as a playlist	23		
		6 Use a Micro SD card	28
		7 Music	29
		Browse the music library	29
		Browse by song information	29
		Browse by artwork	30
		Browse by playlist	31
		Play music	31
		Select the play screen	32
		Select play options	32
		Select sound options	33
		Rate songs	33
		Playlists	34
		Create a playlist-on-the-go	34
		Play a playlist	34
		Delete songs	34
		8 Videos	35
		Browse the video library	35
		Browse by title	35
		Browse by artwork	35
		Play videos	36
		Select play options	36
		Select sound options	36
		Delete videos	36
		9 Pictures	37
		Browse the picture library	37
		Browse by album	37
		Browse by artwork	37
		Play pictures	38
		View pictures	38
		Select play options	39
		Delete pictures	39

10 FM radio	40
Tune in to radio stations	40
Store preset stations	41

11 Audiobooks	42
Sync audiobooks to the player	42
Install AudibleManager on the PC	42
Download audiobooks to the PC	42
Sync to the player	42
Find audiobooks on the player	43
Browse by book information	43
Browse by artwork	44
Play audiobooks	44
Select play options	45
Use bookmarks	45
Delete audiobooks	45

12 BBC iPlayer (available in the UK only)	46
Sync TV/ radio programs to the player	46
Download TV/ radio programs to the PC	46
Sync to the player	47
Find the TV/ radio programs on the player	47

13 Recordings	48
Make recordings	48
Record voices	48
Record from the FM radio	48
Play recordings	49
Delete recordings	49

14 Text reader	50
Add text files to the player	50
Read text files	50
Delete text files	51

15 Folder view	52
Organize files by file folder	52
Find files by folder	52
Manage files on the player	52

16 Settings	53
Sleep timer	53
Display settings	53
Date and time	53
Language	53
PC connection preference	54
Information	54
Format device	54
Factory settings	54
SafeSound	54
Weekly overview	55
SafeSound settings	55
Activate	56
CD installer	56

17 Update the firmware through Philips Songbird	57
--	----

18 Repair the player through Philips Songbird	58
--	----

19 Technical data	59
System requirements	59

Need help?

Please visit

www.philips.com/welcome

where you can access a full set of supporting materials such as the user manual, the latest software updates, and answers to frequently asked questions.

1 Important safety information

General maintenance

The translation of this document is for reference only.

In the event of any inconsistency between the English version and the translated version, the English version shall prevail.



Caution

- To avoid damage or malfunction:
- Do not expose the product to excessive heat caused by heating equipment or direct sunlight.
- Do not drop the product or allow objects to fall on your player.
- Do not allow the product to be submerged in water. Do not expose headphone socket or battery compartment to water, as water entering the set may cause major damage.
- Active mobile phones in the vicinity may cause interference.
- Back up your files. Ensure that you retain the original files you have downloaded to your device. Philips is not responsible for any loss of data if the product becomes damaged or not readable / legible.
- Manage (transfer, delete, etc.) your music files only with the supplied music software to avoid problems.
- Do not use any cleaning agents containing alcohol, ammonia, benzene, or abrasives as these may harm the product.

About operating and storage temperatures

- Operate in a place where temperature is always between 0 and 35°C (32 to 95°F)
- Store in a place where temperature is always between -20 and 45°C (-4 to 113°F).
- Battery life may be shortened in low temperature conditions.

Replacement parts/accessories:

Visit www.philips.com/support to order replacement parts/accessories.

Hearing Safety



Listen at a moderate volume:

Using headphones at a high volume can impair your hearing. This product can produce sounds in decibel ranges that may cause hearing loss for a normal person, even for exposure less than a minute. The higher decibel ranges are offered for those that may have already experienced some hearing loss.

Sound can be deceiving. Over time your hearing 'comfort level' adapts to higher volumes of sound. So after prolonged listening, what sounds 'normal' can actually be loud and harmful to your hearing. To guard against this, set your volume to a safe level before your hearing adapts and leave it there.

To establish a safe volume level:

Set your volume control at a low setting.

Slowly increase the sound until you can hear it comfortably and clearly, without distortion.

Listen for reasonable periods of time:

Prolonged exposure to sound, even at normally 'safe' levels, can also cause hearing loss.

Be sure to use your equipment reasonably and take appropriate breaks.

Be sure to observe the following guidelines when using your headphones.

Listen at reasonable volumes for reasonable periods of time.

Be careful not to adjust the volume as your hearing adapts.

Do not turn up the volume so high that you can't hear what's around you.

You should use caution or temporarily discontinue use in potentially hazardous situations.

Do not use headphones while operating a motorized vehicle, cycling, skateboarding, etc.; it may create a traffic hazard and is illegal in many areas.

Modifications

Modifications not authorized by the manufacturer may void user's authority to operate the product.

Copyright information

All other brands and product names are trademarks of their respective companies or organizations.

Unauthorized duplication of any recordings whether downloaded from the Internet or made from audio CDs is a violation of copyright laws and international treaties.

The making of unauthorized copies of copy-protected material, including computer programs, files, broadcasts and sound recordings, may be an infringement of copyrights and constitute a criminal offense. This equipment should not be used for such purposes.

The Windows Media and the Windows logo are registered trademarks of Microsoft Corporation in the United States and/or other countries.

Be responsible! Respect copyrights.



Philips respects the intellectual property of others, and we ask our users to do the same. Multimedia content on the internet may have been created and/or distributed without the original copyright owner's authorization.

Copying or distributing unauthorized content may violate copyright laws in various countries including yours.

Compliance with copyright laws remains your responsibility.

The recording and transfer to the portable player of video streams downloaded to your computer is intended only for use with public domain or properly licensed content. You may only use such content for your private, non-commercial use and shall respect eventual copyright instructions provided by the copyright

owner of the work. Such instruction may state that no further copies shall be made. Video streams may include copy protection technology that prohibits further copying. For such situations the recording function will not work and you will be notified with a message.

Data logging

Philips is committed to improving the quality of your product and enhancing the Philips user experience. To understand the usage profile of this device, this device logs some info / data to the non-volatile memory region of the device. These data are used to identify and detect any failures or problems you as a user may experience while using the device. The data stored, for example, will be the duration of playback in music mode, duration of playback in turner mode, how many times battery low was encountered, etc. The data stored do not reveal the content or media used on the device or the source of downloads. The data stored on the device are retrieved and used ONLY if the user returns the device to the Philips service center and ONLY to simplify error detection and prevention. The data stored shall be made available to user on user's first request.

Monkey's Audio decoder

- ① The Monkey's Audio SDK and source code can be freely used to add APE format playback, encoding, or tagging support to any product, free or commercial. Use of the code for proprietary efforts that don't support the official APE format require written consent of the author.
- ② Monkey's Audio source can be included in GPL and open-source software, although Monkey's Audio itself will not be subjected to external licensing requirements or other viral source restrictions.
- ③ Code changes and improvements must be contributed back to the Monkey's

Audio project free from restrictions or royalties, unless exempted by express written consent of the author.

- ④ Any source code, ideas, or libraries used must be plainly acknowledged in the software using the code.
- ⑤ Although the software has been tested thoroughly, the author is in no way responsible for damages due to bugs or misuse.

If you do not completely agree with all of the previous stipulations, you must cease using this source code and remove it from your storage device.

FLAC decoder

Copyright (C) 2000,2001,2002,2003,2004,2005,2006,2007,2008,2009 Josh Coalson

Redistribution and use in source and binary forms, with or without modification, are permitted provided that the following conditions are met:

- Redistributions of source code must retain the above copyright notice, this list of conditions and the following disclaimer.
- Redistributions in binary form must reproduce the above copyright notice, this list of conditions and the following disclaimer in the documentation and/or other materials provided with the distribution.
- Neither the name of the Xiph.org Foundation nor the names of its contributors may be used to endorse or promote products derived from this software without specific prior written permission.

THIS SOFTWARE IS PROVIDED BY THE COPYRIGHT HOLDERS AND CONTRIBUTORS "AS IS" AND ANY EXPRESS OR IMPLIED WARRANTIES, INCLUDING, BUT NOT LIMITED TO, THE IMPLIED WARRANTIES OF MERCHANTABILITY AND FITNESS FOR A PARTICULAR PURPOSE

ARE DISCLAIMED. IN NO EVENT SHALL THE FOUNDATION OR CONTRIBUTORS BE LIABLE FOR ANY DIRECT, INDIRECT, INCIDENTAL, SPECIAL, EXEMPLARY, OR CONSEQUENTIAL DAMAGES (INCLUDING, BUT NOT LIMITED TO, PROCUREMENT OF SUBSTITUTE GOODS OR SERVICES; LOSS OF USE, DATA, OR PROFITS; OR BUSINESS INTERRUPTION) HOWEVER CAUSED AND ON ANY THEORY OF LIABILITY, WHETHER IN CONTRACT, STRICT LIABILITY, OR TORT (INCLUDING NEGLIGENCE OR OTHERWISE) ARISING IN ANY WAY OUT OF THE USE OF THIS SOFTWARE, EVEN IF ADVISED OF THE POSSIBILITY OF SUCH DAMAGE.

© 2009, Xiph.Org Foundation

Redistribution and use in source and binary forms, with or without modification, are permitted provided that the following conditions are met:

- Redistributions of source code must retain the above copyright notice, this list of conditions and the following disclaimer.
- Redistributions in binary form must reproduce the above copyright notice, this list of conditions and the following disclaimer in the documentation and/or other materials provided with the distribution.
- Neither the name of the Xiph.org Foundation nor the names of its contributors may be used to endorse or promote products derived from this software without specific prior written permission.

This software is provided by the copyright holders and contributors "as is" and any express or implied warranties, including, but not limited to, the implied warranties of merchantability and fitness for a particular purpose are disclaimed. In no event shall the foundation or contributors be liable for any direct, indirect, incidental, special, exemplary, or consequential damages (including, but not limited to, procurement of substitute goods or services; loss of use, data,

or profits; or business interruption) however caused and on any theory of liability, whether in contract, strict liability, or tort (including negligence or otherwise) arising in any way out of the use of this software, even if advised of the possibility of such damage

XPAT XML Parser

Copyright (c) 1998, 1999, 2000 Thai Open Source Software Center Ltd

Permission is hereby granted, free of charge, to any person obtaining a copy of this software and associated documentation files (the "Software"), to deal in the Software without restriction, including without limitation the rights to use, copy, modify, merge, publish, distribute, sub-license, and/or sell copies of the Software, and to permit persons to whom the Software is furnished to do so, subject to the following conditions:

The above copyright notice and this permission notice shall be included in all copies or substantial portions of the Software.
THE SOFTWARE IS PROVIDED "AS IS", WITHOUT WARRANTY OF ANY KIND, EXPRESS OR IMPLIED, INCLUDING BUT NOT LIMITED TO THE WARRANTIES OF MERCHANTABILITY, FITNESS FOR A PARTICULAR PURPOSE AND NON-INFRINGEMENT. IN NO EVENT SHALL THE AUTHORS OR COPYRIGHT HOLDERS BE LIABLE FOR ANY CLAIM, DAMAGES OR OTHER LIABILITY, WHETHER IN AN ACTION OF CONTRACT, TORT OR OTHERWISE, ARISING FROM, OUT OF OR IN CONNECTION WITH THE SOFTWARE OR THE USE OR OTHER DEALINGS IN THE SOFTWARE.

Recycling the product

Your product is designed and manufactured with high quality materials and components, which can be recycled and reused. When you see the crossed-out wheel bin symbol attached to a product, it means the product is covered by the European Directive 2002/96/EC:



Never dispose of your product with other household waste. Please inform yourself about the local rules on the separate collection of electrical and electronic products. The correct disposal of your old product helps prevent potentially negative consequences on the environment and human health.



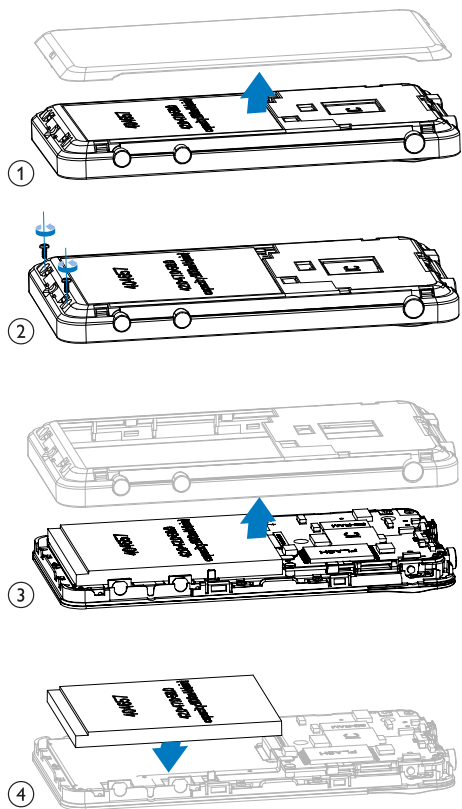
Warning

- Removal of the built-in battery invalidates the warranty and can destroy the product.
- The following removal and disposal instructions are steps that are to be performed at the end of the product's life only.

Your product contains a built-in rechargeable battery covered by the European Directive 2006/66/EC, which cannot be disposed of with normal household waste.



To safeguard the functionality and safety of your product, take your product to an official collection point or service center where a professional can remove the battery as shown:



Please inform yourself about the local rules on separate collection of batteries. The correct disposal of batteries helps prevent potentially negative consequences on the environment and human health.

Notice for the European Union

This product complies with the radio interference requirements of the European Union.

2 Your new player

On **MUSE**, you can do the following:

- Play music;
- Watch videos;
- View pictures;
- Listen to the FM radio;
- Make recordings;
- Read text files (.txt files);
- Expand the memory by inserting a Micro SD card (sold separately).

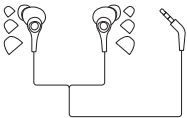
What's in the box

Check that you have received the following items:

Player



Earphones



USB cable



Quick start guide



Note

- The images serve as reference only. Philips reserves the right to change color/design without notice.

Software loaded on the player

MUSE comes with the following software:

- **Philips Songbird** (helps you update the firmware of the player, and manage your media library on a PC and the player).

Files loaded on the player

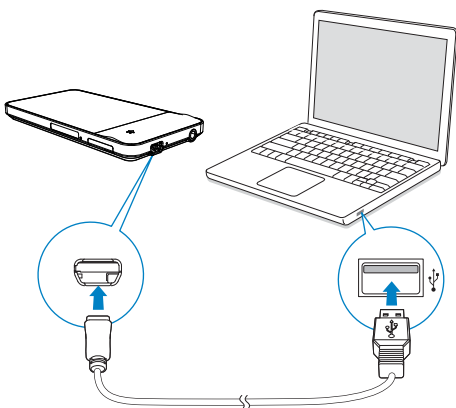
The following files are loaded on **MUSE**:

- User manual
- Frequently asked questions

3 Get started

Charge power

MUSE has a built-in battery that can be charged through the USB connector of a computer. Connect the player to a PC by using the USB cable.



Note

- When you connect MUSE to a computer, you are briefly prompted to select: [Charge & transfer] or [Charge & play].
- If no option is selected, [Charge & transfer] applies.

Battery level indication

The display indicates the approximate levels of the battery status as follows:

100%	75%	50%	25%	0%

- ↳ A flashing battery screen indicates that the battery is low. The player saves all settings and switches off within 60 seconds.

Note

- Rechargeable batteries have a limited number of charge cycles. Battery life and number of charge cycles vary by use and settings.
- The charging animation stops and the icon is displayed when the charging process is completed.

To conserve battery power and increase the play time, do the following on MUSE:

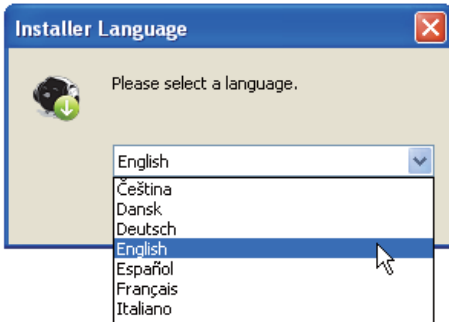
- Set the backlight timer to a low value (go to > [Display settings] > [Backlight timer]).

First-time setup

Install Philips Songbird

The first time you connect the player to a PC, a pop-up screen is displayed:

- 1 Select your language and country.
- 2 Follow the onscreen instructions to complete the installation.



Note

- The installation requires you to agree to the license terms.

If the pop-up screen is not displayed automatically:

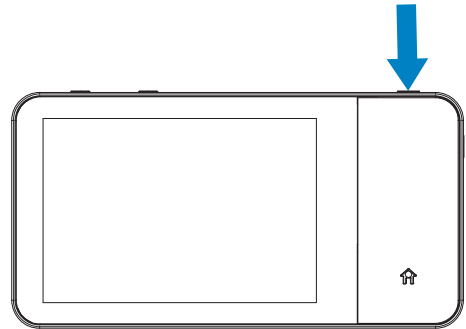
- 1 On the player, make sure that you have selected the following options:
 - In *** > [PC connection preference]**, select **[MSC]**;
 - In *** > [CD installer]**, select **[Enable]**.
- 2 On the PC, select **My Computer** (Windows XP / Windows 2000) / **Computer** (Windows Vista / Windows 7).
 - ↳ The **Philips Songbird** drive is displayed.
- 3 To start installation, double click the **Philips Songbird** drive.

Note

- The installation requires you to agree to the license terms.
- After the installation, the PC connection changes to the MTP mode.

Switch the player on or off

Press and hold **⏻ / 🔒** until the **MUSE** is switched on or off.

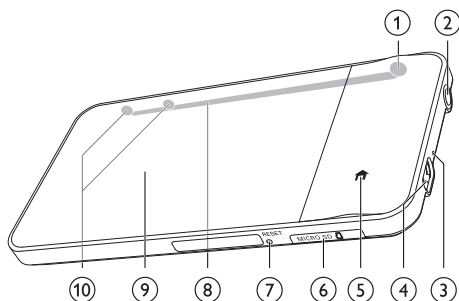


Automatic standby and shut-down

The player has an automatic standby and shut-down feature that can save battery power. After 10 minutes in idle mode (no play, no button is pressed), the player switches off.

4 Overview

Controls



- | | |
|-------------------|---|
| ① | Press and hold: switch on or off the device
Press: lock/unlock the screen; To unlock the screen, also drag the slider on the screen. |
| ② | 3.5 mm headphone connector |
| ③ MIC | Microphone |
| ④ | USB connector for power charge and data transfer |
| ⑤ | Return to the Home screen |
| ⑥ MICRO SD | Slot for Micro SD card |
| ⑦ RESET | Press the hole by using the tip of a ball pen when the screen does not respond to the pressing of keys |
| ⑧ | Speaker |
| ⑨ | Touch screen |
| ⑩ | Press: increase/decrease the volume.
Press and hold: increase/decrease fast. |

Home screen

Menu	Mode	To
	Music	play audio files
	Video	watch videos
	Pictures	view pictures
	FM radio	tune in to the FM radio; record from the FM radio
	Music suggestions	four songs from the music library
	Rhapsody* channels	listen to channel lists that you download and transfer through the Rhapsody software
	Audiobooks	listen to audiobooks that you download and transfer through the AudibleManager software
	Text reader	read text (.txt) files
	Folder view	view files in folders
	Recordings	create or listen to recordings
	Settings	customize the settings of MUSE
	SafeSound	select SafeSound options settings


Note

- * Rhapsody channels becomes part of the Home screen after you connect MUSE to a computer that has the Rhapsody software installed. Rhapsody channels services require an active Rhapsody account and is available in some regions only.

Navigate on the Home screen



To access functional menus,

- If necessary, tap  to switch between the two pages;
- Tap an icon.

To go back to previous screens,

- Press  repeatedly.



To return to the Home screen,

- Press .

Switch between the Home screen and play screen

On the Home screen,

During the play of music, video, or radio,


- Tap the artwork next to , , or ;
- If necessary, tap  to switch between the two pages.

On the play screen,

- Press .



Tip

- In , tap a thumbnail to show the picture that you play recently.

Screens

Lock/ unlock the screen

Lock the screen of **MUSE**. You can lock all the touch controls on the screen (the volume controls still function). Thus, undesired operations are prevented.

Auto lock

After a time duration, the screen dims and is locked automatically. To set the time duration, go to **⚙** > **[Display settings]** > **[Backlight timer]**.

To lock the screen manually

- Press **⏻** / **🔒**.

To unlock the screen

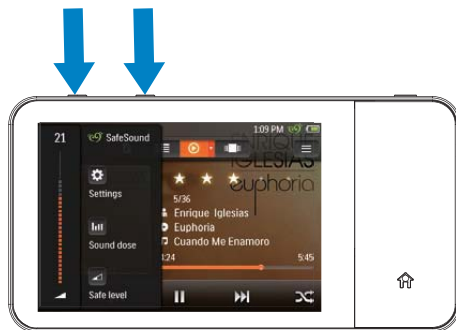
- 1 Press **⏻** / **🔒**.
- 2 Drag the slider on the screen.



Select the safe volume level

Select the safe volume when you listen to music through the by-packed earphones.

- 1 Make sure that you have plugged the earphones into the player.
- 2 On the music play screen, press **◀** or **▶**.
 - ↳ If you have switched on the SafeSound function, the SafeSound screen is displayed (see 'Activate' on page 56).
- 3 Tap **⏸** to select the safe volume level.
 - Tap **⚙** to select the **SafeSound** options.
 - Tap **📊** to view your exposure to sound pressure over one week.



To select the SafeSound options on the Home screen,

- Tap **🔊**. If necessary, tap **🏠** to switch between the two pages.

Tip

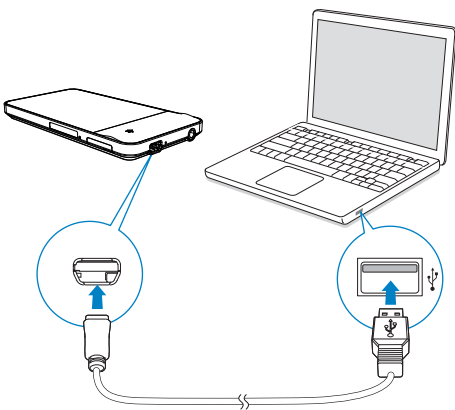
- For the information about SafeSound options, see 'SafeSound' (see 'SafeSound' on page 54).

5 Sync with PC media library

With **Philips Songbird**, you can do the following:

- Manage your media collections on a PC;
- Sync **MUSE** with your PC media library;
- Register **MUSE** on www.philips.com/welcome;
- Update the firmware of MUSE (see 'Update the firmware through Philips Songbird' on page 57);
- Repair the MUSE (see 'Repair the player through Philips Songbird' on page 58).

Install Philips Songbird



The first time you connect the player to a PC,

- a pop-up screen is displayed for you to install Philips Songbird (see 'First-time setup' on page 12);

To install Philips Songbird later,

- 1 On the player, make sure that you have selected the following options:
 - In * > [PC connection preference], select [MSC];
 - In * > [CD installer], select [Enable].
- 2 On the PC, select **My Computer** (Windows XP / Windows 2000) / **Computer** (Windows Vista / Windows 7).
↳ The **Philips Songbird** drive is displayed.
- 3 To start installation, double click the **Philips Songbird** drive.

Collect media files from the PC

Set the watch folder

Create a central folder

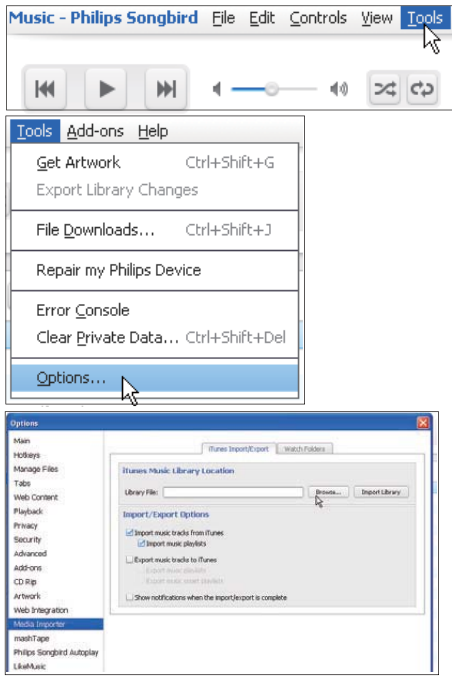
On a PC, create a central folder to save all media files, for example, D:\Songbird media. In **Philips Songbird**, set the central folder as the watch folder. Each time you launch **Philips Songbird**, songs are added to/ removed from **Philips Songbird** as they are on the central folder.

First-time launch

The first time you launch **Philips Songbird** on a PC, do the following as prompted to import existing media files into **Philips Songbird**:

- Select the iTunes media folder to import an existing iTunes library;
- Select the central folder to search and import the existing media files.
↳ The central folder is set as the watch folder of **Philips Songbird**.

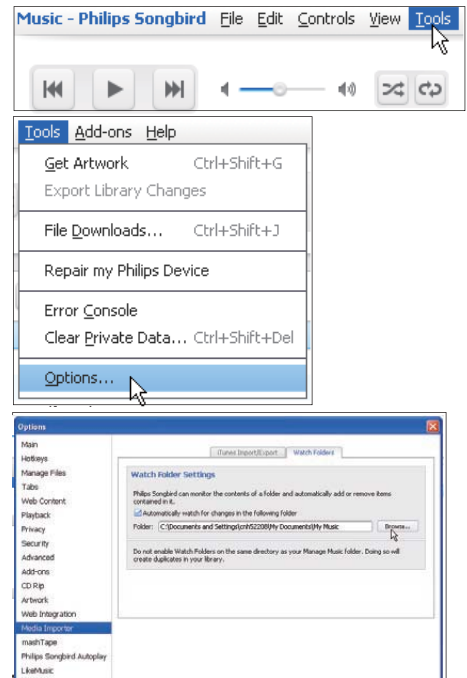
To set iTunes media folder



- 1 On Philips Songbird, go to **Tools > Options...**
- 2 Select **Media Importer**, and then the **iTunes Importer** tab.
- 3 Verify your library location and options.
- 4 Click the **Import Library** button next to the library location.
 - ↳ The software imports the iTunes library into **Philips Songbird**.

To set the watch folder

In **Philips Songbird**, set the watch folder as follows:



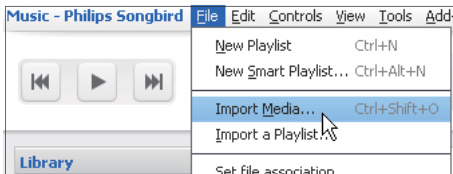
- 1 Select **Tools > Options**.
- 2 In **Options**, select **Media Importer**. Then, select the **Watch Folders** tab.
- 3 In **Watch Folders**, tick the checkbox as shown.
- 4 Click **Browse**, and select the central folder (e.g. D:\Songbird media) as the watch folder.
 - ↳ In **Philips Songbird**, media files are added or removed as they are in the central music folder.

Import media files

Import media files from other folders

In Philips Songbird,

- go to **File > Import Media** to select folders on the PC.
 - ↳ Media files are added under **Library**.
- or, go to **File > Import a playlist** to select playlists on the PC.
 - ↳ Media files are added under **Playlists**.



Get contents from online sources

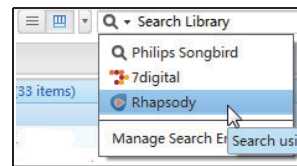
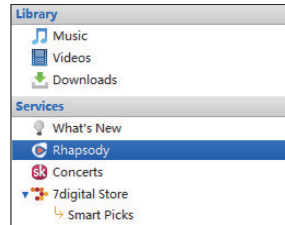
You can access and purchase content from online sources. Find the available online services under **Services** on the source selector pane.

Note

- Before you download or purchase content from online services, subscribe to the online service and log in to your account.
- Some of the services are available in certain countries.

Search online

- 1 Select an online service:
 - Select an option under **Services**;
 - Alternatively, in the search box, click the down arrow to select an online service.



- ↳ You enter the webpage of the online source.

- 2 Search for your media file.
 - If necessary, use the search box to enter a keyword.

Play online

Note

- Before you play music from **Rhapsody**, subscribe to the service and log in to your account.

On the **Rhapsody** webpage,

- To play the entire playlist, click ► **Play All**;
- To play a song, select the song and click ► next to it.

Key Tracks		Key A
Play/Add	Title	
	Play/Add All	
	Christmastime Is Here (Instrumental)	
	Christmas Eve / Sarajevo 12/24	
	Linus & Lucy	

Add to Philips Songbird

To transfer songs from **Rhapsody** to **Philips Songbird**, add the songs to a playlist in Philips Songbird (see 'Create playlists in Philips Songbird' on page 21).

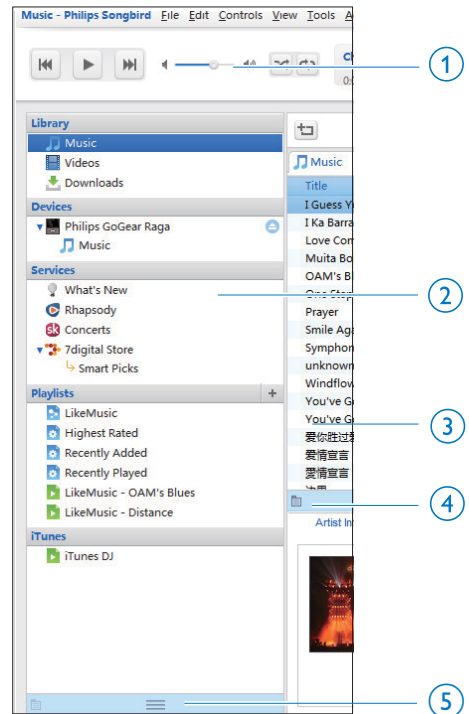
On the **Rhapsody** webpage,

- To add the entire playlist to **Philips Songbird**, click + **Add All**;
- To add a song to **Philips Songbird**, select the song and click + next to it.

Key Tracks		Key A
Play/Add	Title	
	Play/Add All	
	Christmastime Is Here (Instrumental)	
	Christmas Eve / Sarajevo 12/24	
	Linus & Lucy	

Search in Philips Songbird

Philips Songbird is structured as follows:



- ① **Player pane:** Click the buttons to play media files in the media library of **Philips Songbird**.
- ② **Source selector pane:** Click to select a source of contents; Click ► / ▼ to show or hide the subsources.
 - **Library:** media library of **Philips Songbird**;
 - **Devices:** player that is connected to the PC;
 - **Services:** online media sources;
 - **Playlists:** Playlists that you create or generate in the media library of **Philips Songbird**.
- ③ **Contents pane:** View contents in current source of contents.

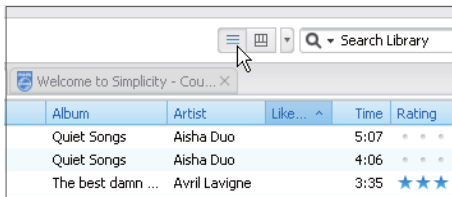
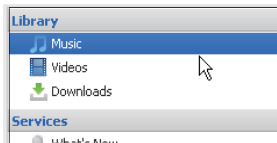
- ④ **Information pane:** From the internet sources, MashTape can collect information available about the media file being played.
- ⑤ **Artwork pane:** Drag the up arrow to display the pane.

Search by metadata

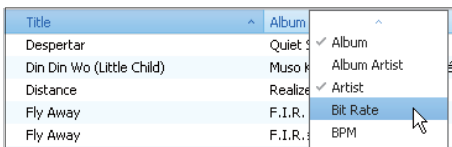
In the media library of **Philips Songbird**, media files are sorted by metadata. To search for media files by metadata, click the icon to select the list or filter pane view.

List view

In the list view, media files are listed by metadata.



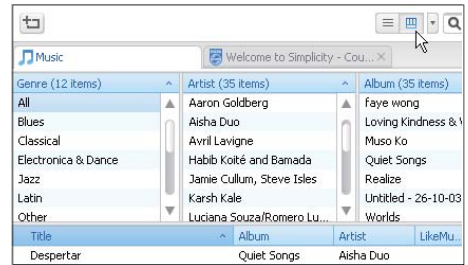
To select what metadata to display,



- 1 In **Library > Music** or **Videos**, right click the bar of metadata tags.
↳ A list of metadata tags is displayed.
- 2 Click the tag that you want to display on the metadata bar.

Filter pane view

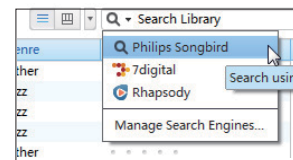
In the filter pane view, media files can be filtered by three metadata tags.



To select a filter pane,

- 1 Right click the bar of metadata tags.
↳ A list of metadata tags is displayed.
- 2 Click the tag that you want to display on the metadata bar.

Search by keyword



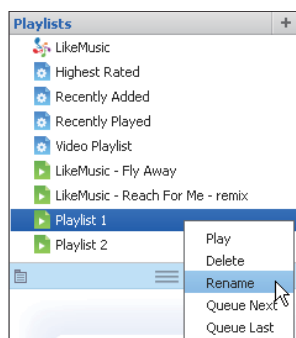
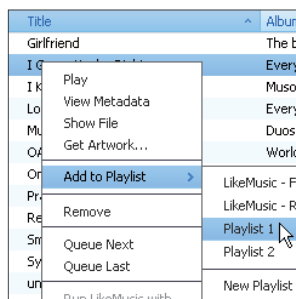
- 1 In the search box, click the down arrow to select **Philips Songbird** as the source of content.
- 2 Enter the keyword in the search box.
- 3 Press the **Enter** key.
↳ You start the search in the library.

Create playlists in Philips Songbird

With a playlist, you can manage and sync your songs as needed.

Create a playlist

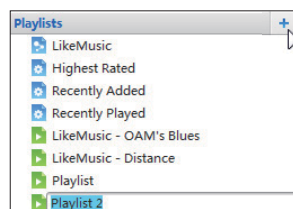
Select songs that you want to play. Add the songs to a playlist.



- 1 In **Library > Music**, select songs.
 - To select multiple songs, hold down the **Ctrl** button when you click songs.

- 2 To add the songs to a playlist:
 - Right click on the songs, and select **Add to Playlist**;
 - Select a playlist;
 - ↳ The songs are added to the playlist.
 - To create a playlist, select **New Playlist**.
 - ↳ A new playlist is created for the songs.
 - ↳ Under **Playlists**, name the playlist as needed.

Alternatively,
Create a playlist. Add selected songs to the playlist.



- 1 Under **Playlists**, click + to create a playlist.
 - ↳ A new playlist is created.
- 2 Name the new playlist.
- 3 Drag and drop media files to the playlist.

Tip

- To drag and drop multiple files at the same time, hold down the **Ctrl** button when you click options.

Generate LikeMusic playlists

Based on the **LikeMusic** analysis, a playlist can be generated from a seed song.

LikeMusic analyzes songs in your library and, based on their music characteristics, creates relationships between them. These relationships help **LikeMusic** to create playlists of songs that sound great together.

When you import songs into the music library of **Philips Songbird**, the **LikeMusic** analysis starts. For the song that completes the analysis, the **LikeMusic** icon lights up; For the song that cannot complete the analysis, the icon remains gray.

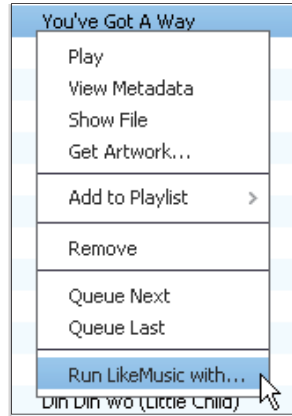


Select a seed song

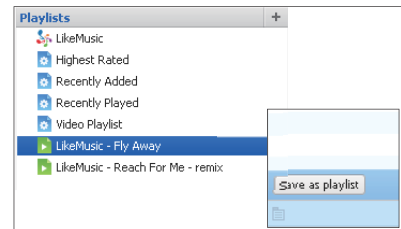
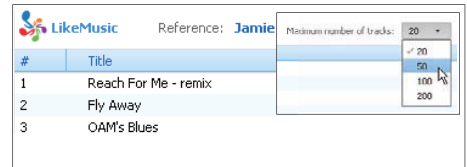
Make sure that the seed song has completed the **LikeMusic** analysis.

- In **Library > Music**, double click the blue **LikeMusic** icon of the song;

Alternatively,



- In **Library > Music**, right click on a song and select **Run LikeMusic with...**
 - ↳ A **LikeMusic** playlist is displayed in the **LikeMusic** page.



Select the maximum number of songs in the playlist

- As shown, select a number in the drop-down list.

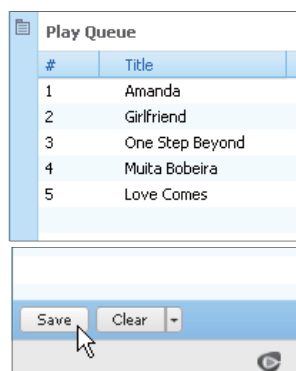
Save the LikeMusic playlist

- As shown, click **Save as playlist** in the LikeMusic page.
 - ↳ The LikeMusic playlist is saved under **Playlists**.

Save the play queue as a playlist

Create a play queue

- Drag and drop songs or playlists to the **Play Queue** pane.

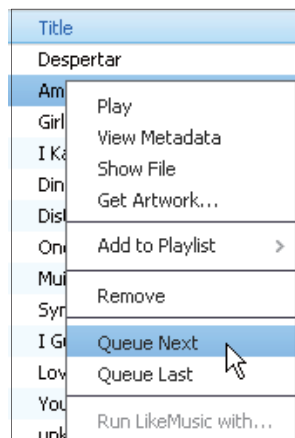


Save the play queue as a playlist

- Click **Save**.
 - ↳ The play queue is saved as a playlist under **Playlists**.
- Under **Playlists**, name the playlist as needed.

Add songs to the top or end of the play queue

- To add songs to the top, right click on the options and select **Queue Next**;
- To add songs to the end, right click on the options and select **Queue Last**.



Play a playlist

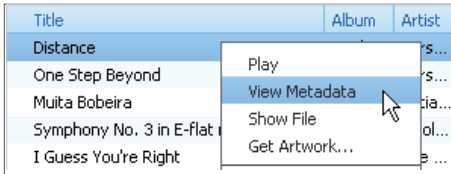
- To play the entire playlist, right click on the playlist and select **Play**.
 - To start play from a song, double click on the song.
- To select play options, click buttons on the play queue.

Manage media files in Philips Songbird

Edit metadata

By editing file information (metadata or ID3 tag), you can have media files sorted automatically by song title, artist, album, and other information.

After you sync the media files to the player, you can browse the media library by metadata.



- 1 In **Library** > **Music** or **Videos**, select a media file.
- 2 Right click on the file to select **View Metadata**.
 - ↳ A metadata table is displayed for you to edit the information.

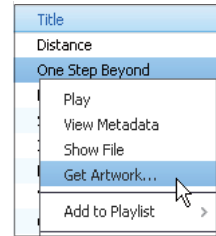
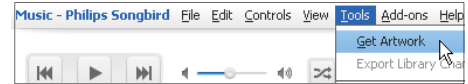
Note

- To sort the music files from **Rhapsody** as needed, edit the metadata in the media library of **Philips Songbird**. The song information remains unchanged on the play screen.

Get album artwork

Artwork is sometimes available for music downloads. With **Philips Songbird**, you can insert artwork for songs.

After you sync the songs to some players, you can browse the media library by artwork.



- On **Philips Songbird**, select **Tools** > **Get Artwork**.
 - ↳ Artwork is fetched for all titles in the library.
- Right click on selected titles, and select **Get Artwork**.
 - ↳ Artwork is fetched for all selected titles.

Remove media files from the library



- 1 Right click on a media file. Select **Remove**.
- 2 Confirm as prompted.
 - ↳ The selected file is removed from the library and from all playlists. (By default, the file is only "removed", not "deleted". The file still exists in its original location on the computer or computer network.)

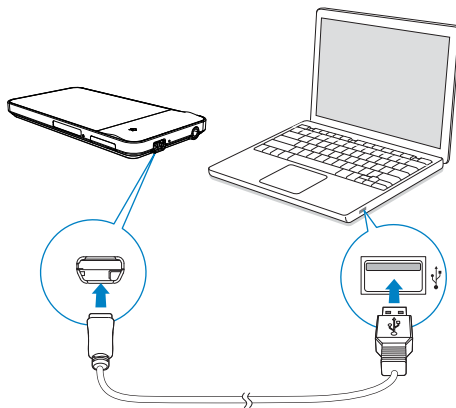


Tip

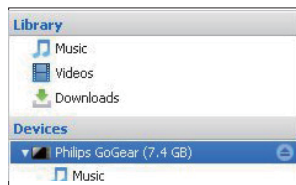
- To select multiple files, hold down the **Ctrl** button when you click options.
- To select multiple consecutive files, hold down the **Shift** button when you click the first and last options.

Sync the player with Philips Songbird

Through **Philips Songbird**, you can sync music, video, or photos from a PC to the player. If the player is in the MTP mode, the sync process allows media files to be converted to the formats playable on the player (see 'PC connection preference' on page 54).

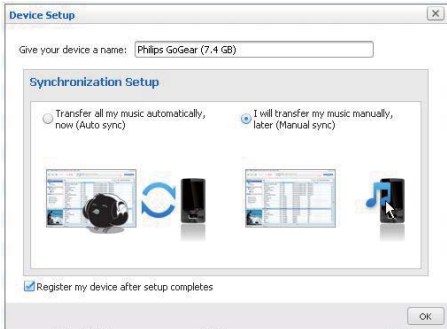


- 1 On the PC, launch **Philips Songbird**.
- 2 Connect the player to the PC by using a USB cable.
 - ↳ On **Philips Songbird**, the player is displayed when it is recognized by the PC.

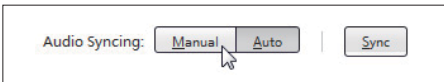
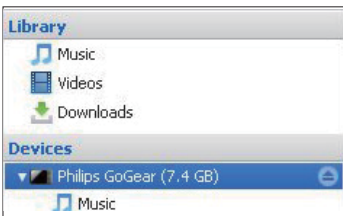


Select auto or manual sync

The first time you connect the player to **Philips Songbird**, select auto sync or manual sync for the player.



To select auto or manual sync later,

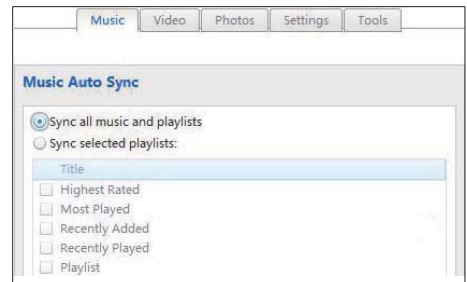
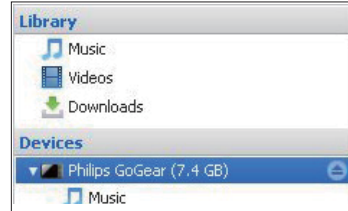


- 1 Select the player under **Devices**.
- 2 Select **Manual** or **Auto**.
- 3 To confirm the option, click **Apply**.

Auto sync

- If you have selected auto sync, auto sync starts automatically when you connect the player to a PC;
- Alternatively, select the player under **Devices**, and click **Sync**.

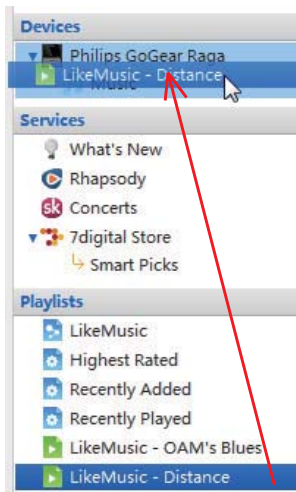
To select auto sync settings,



- 1 Select the player under **Devices**.
- 2 On the pop-up screen, click the **Music**, **Videos**, or **Photos** tab.
- 3 Click to select an option.

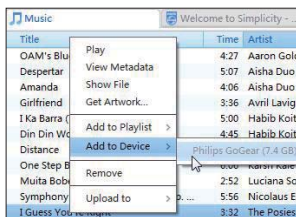
Manual sync

To transfer selected playlists manually,



- 1 Select playlists.
- 2 Drag and drop the playlists to **MUSE**.

To transfer selected media files manually,

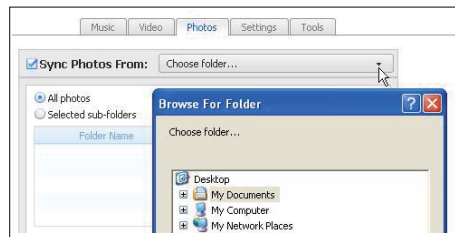


- 1 On the Content pane, right click on a selected media file.
- 2 Select **Add to Device > MUSE**.
↳ Selected files are transferred to **MUSE**.

Tip

- To select multiple files at the same time, hold down the **Ctrl** button when you click options.

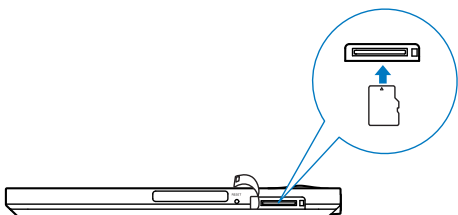
Sync photos to the player





- 1 Select the player under **Devices**.
- 2 On the pop-up window, click the **Photos** tab.
- 3 Select a folder of photos on the PC:
 - Click the checkbox next to **Sync Photos From**;
 - Click the drop-down list to select a file folder.
- 4 Click **Sync**.
↳ Photos in the folder are synced to the player.

6 Use a Micro SD card




On the **MUSE**, insert a Micro SD card (up to 32 GB). You can expand the memory size of **MUSE**.




To copy or move folders/ files from the player to the SD card,

- 1 From the Home screen, go to .
- 2 On the screen of folders/ files, tap  and select **[Copy]** or **[Move]**.
 - ↳ Checkboxes are displayed next to the folders or files.
- 3 Tap the checkbox to select folders/ files.
- 4 Confirm your option as prompted.


To play from the SD card,

- From the Home screen, select , , or .
- ↳ You can play supported media files from the SD card.

7 Music

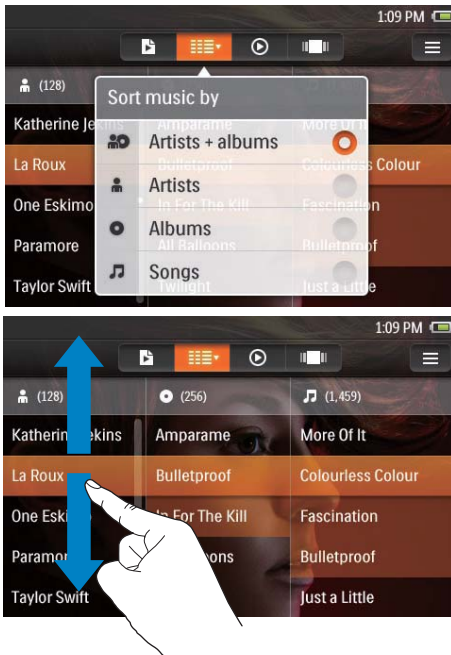
Go to  to play music from the media library on the player:


Browse the music library

In , music files are organized by metadata (file information). You can browse the music library by song information, artwork, or playlist.

Browse by song information

With columns, the music library of **MUSE** allows you to browse different information about songs quickly.




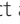


- 1 Tap  to select library views: **[Artists]** and **[Albums]**, **[Artists]**, **[Albums]**, or **[Songs]**.
 - ↳ The music library is sorted by the song information in alphabetical order.
- 2 In a column, swipe your finger up/ down to browse through the list of options.

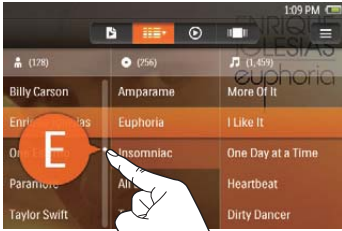
SuperScroll

In a list of options that are sorted by alphabet, **Superscroll** allows you to browse the options by initial of song information. On an alphabet, release the scroll slider and you jump to the options that start with the alphabet.

To start Superscroll on the list of artists, albums, or songs,

- 1 Tap  to select a library view: , , or .
- ↳ The music library is sorted by the selected song information in alphabetical order.
- 2 In the column, swipe your finger up/ down, and then release your finger.
 - ↳ The scroll bar appears.
- 3 Drag the slider on the scroll bar.
 - ↳ On the screen, you can see the initials of current options.


- 4 On a selected alphabet, release your finger.
↳ You jump to the option that starts with the alphabet.



Browse by artwork

Artwork, or album art (the picture of CD/album cover), is sometimes available for music downloads. Through some media management software, you can insert artwork for albums/ songs.



- 1 Tap  to select the artwork view.
↳ The artwork is sorted by album name in alphabetical order.
- 2 Swipe left/ right through the artwork.

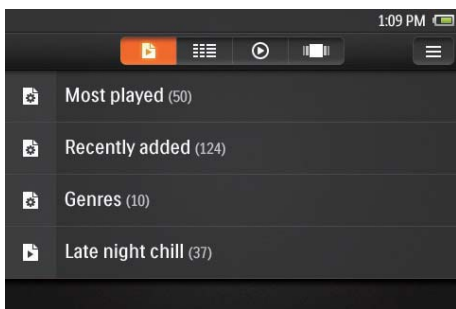
Browse by playlist

On the player, playlists can be:

- generated by the player based on certain criteria, such as **[Highest rated]**, **[Most played]**, **[Genres]**;
- created by yourself on the player (see 'Create a playlist-on-the-go' on page 34);
- synchronized from the PC through Philips Songbird (see 'Sync the player with Philips Songbird' on page 25).

To find the playlists,

- Tap .



Play music

- 1 In the music library, browse to find music.
- 2 To start play, tap an artist, album, song, or artwork.
 - ↳ The play screen is displayed.





To play from a song within current album,

- 1 On the play screen, tap the artwork.
 - ↳ The song list is displayed.
 - ↳ The play icon is next to current song.
- 2 Tap a song.
 - ↳ Play starts from the song.
 - ↳ To return to the play screen, tap the artwork again.



Select the play screen

- 1 Make sure that you have enabled the lyrics function.
 - Tap  and select **[Lyrics]**.
- 2 On the play screen, tap  to select a view:
 - **[Standard]**: show full play screen
 - **[Lyrics]**: if the lyrics are available, show *lyrics on the play screen



Tip

- * The lyrics function is available for songs in the format of .mp3 or .wma.
- *Lyrics are sometimes embedded in the music downloads.
- * In the Windows Explorer on a PC, you can save a lyrics file (.lrc) for a song file (see 'Organize files by file folder' on page 52). Put the two files in the same file fold, and use the same file name for the two files.

Select play options

To skip songs on the play screen,


- Swipe left/ right on the screen.




To search within current song on the play screen,

- Tap on the progress bar to select a play position.



On the play screen, tap icons to select play options:




- If necessary, tap  and select **[Standard]**;
- Tap the screen to show the icons at the base.

 /  /  Tap to switch to the playlist, library, play, or artwork screen.




 Tap to pause/resume play.

 /  Tap to skip songs;
Hold to search within current song.

 Tap once or more to select repeat options:
Repeat all: Tap to repeat all songs in current folder.
Repeat one: Tap to repeat current song.


 Tap to play all songs in current folder in random order.

To switch between the play screen and library screen,

- Press  to go to the Home screen;
 - ↳ The artwork of current song is displayed next to .
- To return to the play screen, tap the artwork next to .

Select sound options

1 Make sure that you have plugged the earphones into the player.

2 Tap  to select options:

[FullSound] Restore the sonic details that music compression loses (such as MP3, WMA).

[PersonalSound] Drag the navigation button on the screen to select sound settings.

Tip

- When you select one of **[FullSound]** and **[PersonalSound]**, you switch off another.

Rate songs

Assign rating to the songs. The player can generate a playlist that are sorted by your rating (see 'Browse by playlist' on page 31).

To assign rating to songs,

- On the play screen, tap the rating star once or more:

• • • • •

(not rated)

★ • • • •

(rating 1)

★★ • • •

(rating 2)

★★★ • •


(rating 3)

★★★★ •

(rating 4)

★★★★★

(rating 5)

- ↳ In  > **[Highest rated]**, you can find the songs between rating 5 and 3 at the top.



Playlists

With a playlist, you can access a list of songs from different artists or albums.


Create a playlist-on-the-go

On **MUSE**, you can create five playlists-on-the-go.



Create a playlist-on-the-go

- 1 Tap  to select the **[Playlists]** view.
- 2 Tap  and select **[Create new 'Playlist on the go']**.
 - ↳ A playlist-on-the-go is created.

Add songs to a playlist-on-the-go

- 1 Select or play a song.
- 2 On the list of songs or play screen,
 - tap  and select **[Add to playlist]**.
 - ↳ A list of playlists is displayed.
- 3 Tap to select a playlist. Confirm as prompted.
 - ↳ Current song is added to the playlist.

Play a playlist



- 1 Tap  to select the **[Playlists]** view.
 - ↳ A list of playlists is displayed.
- 2 Tap to select a playlist.
 - ↳ The songs under the playlist are displayed.
- 3 Tap  to play all songs in random order.
 - Tap a song to start play from the song.

Delete songs


You can delete songs in the following ways:

- Delete songs by artist;
- Delete songs by album;
- Delete selected songs.



To delete an artist, album, or song,

- 1 Tap  to select library views.
 - ↳ The music library is sorted by the song information in alphabetical order.
- 2 Tap  and select **[Delete]**.
- 3 Tap the checkbox next to options:
 - Select an artist to delete all the albums and songs under the artist;
 - Select an album to delete all the songs under the album;
 - Tap to select songs to delete the songs.
- 4 Tap **[Delete [X] items]** ([X] denotes the number of selected songs).
 - ↳ Selected items are deleted.


To delete current song on the play screen,

- 1 Tap  and select **[Delete]**.
- 2 Confirm as prompted.
 - ↳ Current song is deleted.

To delete a playlist-on-the-go,

- 1 Tap  to select the playlists view.
- 2 Tap  and select **[Delete a playlist]**.
 - ↳ A list of playlists is displayed.
- 3 Tap the checkbox to select playlists.
- 4 Confirm as prompted.
 - ↳ Selected playlists are deleted.

8 Videos

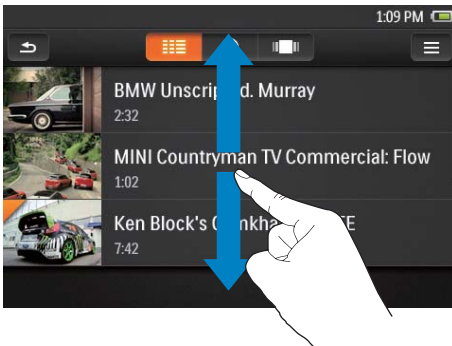
Go to  to play videos from the media library on the player.


Browse the video library

In the video library, video files are organized by metadata (file information). Browse the video library by title or artwork.

Browse by title

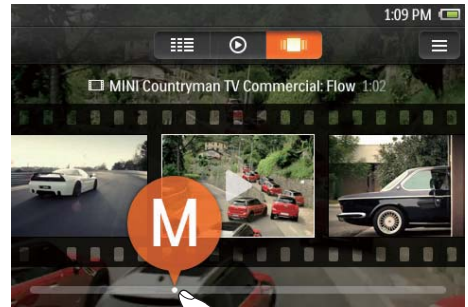
With columns for video artwork, title and total play time, the video library of **MUSE** allows you to browse information about video files quickly.




- 1 Tap  to select the library view.
 - ↳ The video files are displayed by folder in alphabetical order.
 - ↳ For a video that you have never watched, the orange mark is displayed on the top left of the artwork.
- 2 In a column, swipe your finger up/ down to browse through the list of options.

Browse by artwork

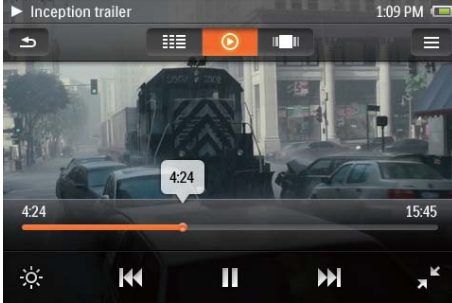
Artwork, or album art, is the video/ album cover.



- 1 Tap  to browse through the library by artwork.
 - ↳ The artwork is sorted by title in alphabetical order.
- 2 Drag the slider to scroll through the artwork.
 - ↳ The initial letter of current item is displayed on the screen.

Play videos


- 1 In the video library, browse to find a video.
- 2 Tap a video.
 - ↳ Play starts from current video.
 - ↳ The play screen is displayed.




Select play options


On the play screen, tap icons to select play options:


- Tap the screen to show the icons.

 Tap to switch to the library, play, or artwork screen.

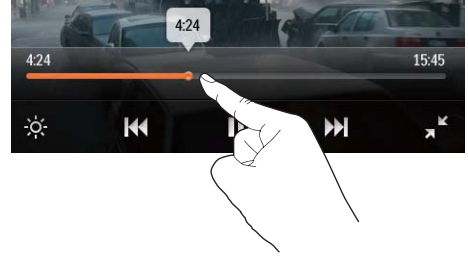
 Tap to pause/resume play.

 Tap to skip titles;
Hold to search within current title.

 Tap to switch between the full screen and normal view.




 Tap to select brightness for the screen.

To search within current video on the play screen,




- Tap on the progress bar to select a play position.



To switch between the play screen and library screen,

- Press  to go to the Home screen;
 - ↳ The artwork of current video is displayed next to .
- To return to the play screen, tap the artwork next to .


Select sound options

- On the play screen, press  to select **Surround for movies** (surround sound for movie play).


Delete videos

- 1 Tap  to select library views.
- 2 Tap  and select **[Delete video]**.
- 3 Tap the checkbox to select options.
- 4 Confirm as prompted.
 - ↳ Selected items are deleted.

Alternatively,

- Play a video. Tap  and select **[Delete video]**.
 - ↳ Current video is deleted.

9 Pictures


Go to  to play pictures from the media library on the player.

Browse the picture library

In the picture library, picture files are organized by album or file folder.

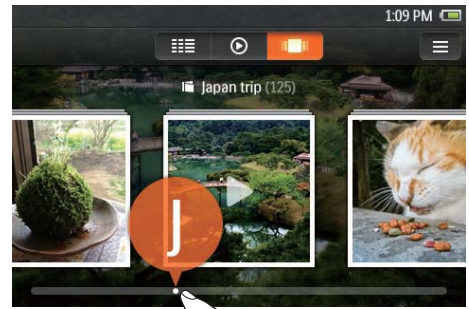
Browse by album




- 1 Tap  to select the library view.
- 2 Tap to select an album or folder.
 - If necessary, swipe up/ down to scroll through the list of options.
 - Pictures in the folder are shown as thumbnails.
- 3 Tap a thumbnail to play the picture.
 - If necessary, swipe up/ down to scroll through the list of options.


Browse by artwork

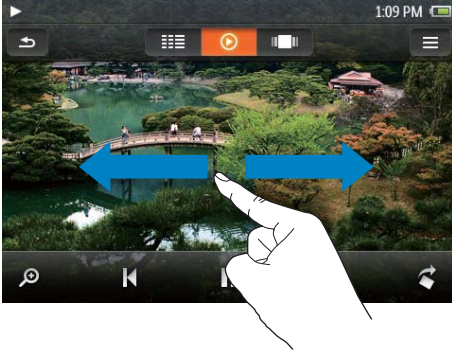
Artwork, or album art, is the album cover.



- 1 Tap  to browse through the library by artwork.
 - ↳ The artwork is sorted by album name in alphabetical order.
- 2 Drag the slider to scroll through the artwork.
 - ↳ The initial letter of current item is displayed on the screen.

Play pictures

- 1 In , tap to play a selected picture.
↳ The picture play screen is displayed.
- 2 Swipe left/ right to select a picture.



To play pictures one by one


- Tap .

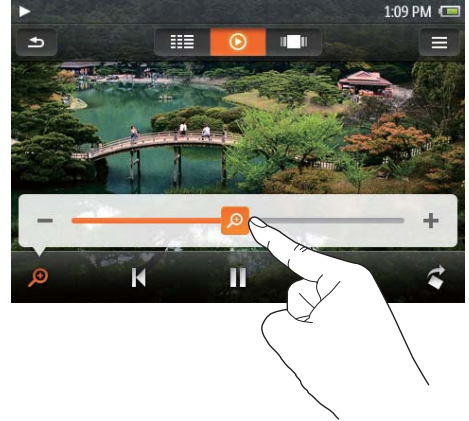
Alternatively,

- Tap  and select [Start slideshow].


View pictures

To zoom in or out,

- 1 Tap on  to show the zoom control bar.
- 2 Drag on the bar to zoom in/ out the picture.
- 3 In an enlarged picture, swipe to pan through the picture.

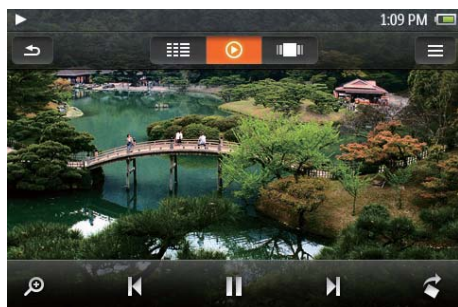





To rotate the picture,

- Tap  to rotate the picture clockwise by 90 degrees.


Select play options

On the play screen, tap icons to select play options:



	Tap to switch to the library or play screen.
	Tap to start/pause/resume slideshow play.
	Tap to skip pictures.

Select slideshow settings


- On the library or play screen, tap  and select **[Slideshow settings]**:

[Time per slide] Select the time interval before one slide switches to another.

[Repeat] Play pictures in current folder repeatedly.

[Shuffle] Play pictures in current folder in random order.

Delete pictures

- Play a picture.
- On the play screen, tap  and select **[Delete picture]**.

10 FM radio

Note

- Plug in the supplied earphones when you tune in to radio stations. The earphones double as antenna. For better reception, move the earphone cable in different directions.

Tune in to radio stations

Auto tune

- 1 From the Home screen, go to .
↳ The last played station starts to play.
- 2 To select a preset station, tap to select the library view. Tap to play a preset station.



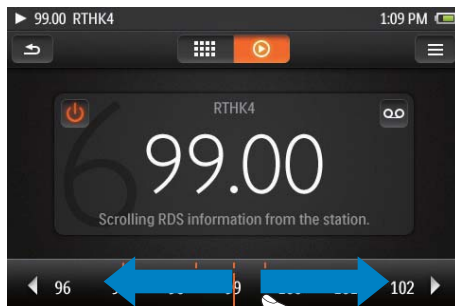
- 3 To restart auto tune, press and select [Auto tune].
↳ Up to 20 available stations are stored to replace the old presets.
- 4 To switch on/ off the radio, tap .

Tip

- When you move to a new place (such as a new city or country), restart auto tune for better reception.

Manual tune


Use Manual tune to search for a frequency.

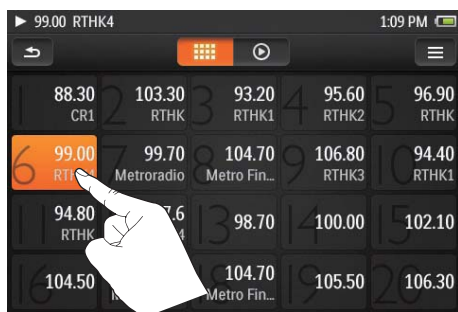


- 1 From the Home screen, go to .
↳ The last played station starts to play.
- 2 On the radio play screen, search for a frequency:
 - Swipe left/ right on the frequency bar.
- 3 To switch on/ off the radio, tap .


Store preset stations

On **MUSE**, you can store up to 20 preset stations.


- 1 Tune in to a radio station.
- 2 On the radio play screen, press  and select **[Save to preset]**.
 - ↳ The list of presets is displayed.
- 3 Tap a location to save the station. Confirm as prompted.
 - ↳ Current station is saved to the selected location.



To clear all preset stations,

- Press  and select **[Clear all presets]**.

11 Audiobooks

From the Home screen, select  to play books in audio formats that you have downloaded from www.audible.com.

Sync audiobooks to the player

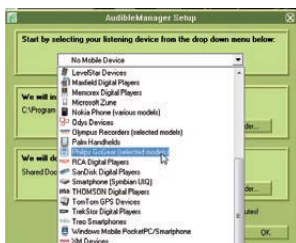
From www.audible.com, download and install the **AudibleManager** software on your PC.

Through the software, you can

- download audiobooks from www.audible.com to your PC library of audio books;
- sync the audiobooks to your player.



Install AudibleManager on the PC

- 1 Connect your PC to the Internet.
- 2 From www.audible.com, download the **AudibleManager** software for MP3/ MP4 players.
- 3 Install the software on your PC:
 - On the setup screen, select **Philips GoGear (selected models)** from the drop-down list of devices;



- Follow onscreen instructions to complete the installation.

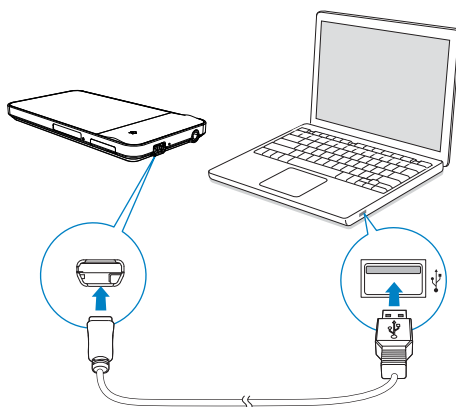
Download audiobooks to the PC

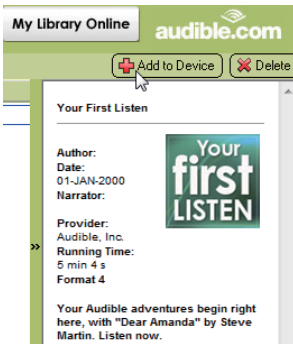
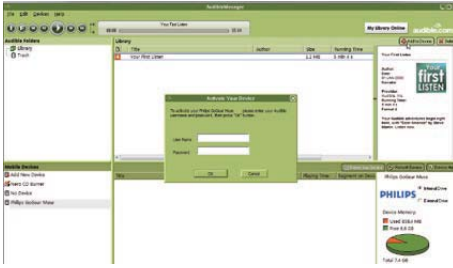
- 1 Connect your PC to the Internet.
- 2 Launch **AudibleManager** on your PC.
- 3 On **AudibleManager**, click the **My Library Online** button to connect to www.audible.com.
- 4 Select and download audio books:
 - Log in to your account with www.audible.com;
 - Download audio books in the format of  or .

↳ The downloaded books are automatically added to your library on **AudibleManager**.

Sync to the player

- 1 Launch **AudibleManager** on your PC.
- 2 Connect the player to the PC. Wait until the player is recognized by **AudibleManager**.
 - On the player, make sure that you have selected **[MTP]** in *** > [PC connection preference]**.
- 3 On **AudibleManager**, click **Add to Device**.
 - The first time you connect the player to **AudibleManager**, activate the player as prompted.





To check the audio books that are transferred to the player, see the player pane on **AudibleManager**.

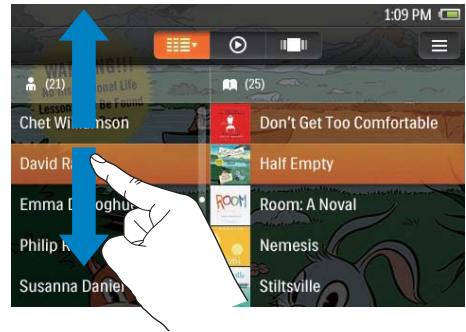
- If necessary, click **Refresh Device**.

Find audiobooks on the player

In **audible**, audiobook files are organized by book information. You can browse the audiobook library by book information or artwork.

Browse by book information

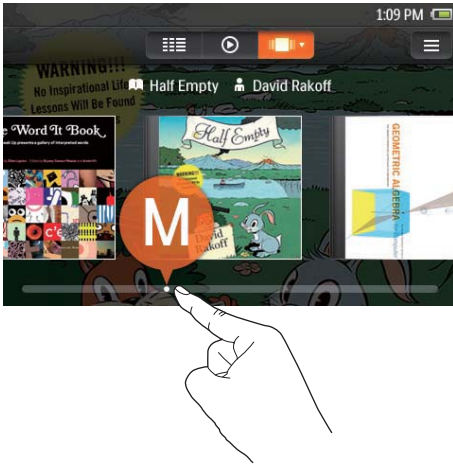
With columns, the audiobook library allows you to browse information about books quickly, including the authors and book titles.




- 1 Tap **☰** to select the library view, **[Titles]** and **[Authors]**.
↳ The book library is sorted by book information in alphabetical order.
- 2 In a column, swipe your finger up/down to browse through the list of options.

Browse by artwork

Artwork, or album art (the picture of book cover), is sometimes available for audiobook downloads.



- 1 Tap  to select the artwork view.
 - ↳ The audiobook artwork is sorted by book title in alphabetical order.
- 2 Drag the slider to scroll through the artwork.
 - ↳ The initial letter of current item is displayed on the screen.

Play audiobooks

- 1 In the audiobook library, browse to find an audiobook.
- 2 Tap the book.
 - ↳ Current book starts to play.
 - ↳ The play screen is displayed.



To play from a chapter within current book,


- 1 On the play screen, tap the artwork of the book.
 - ↳ The list of chapters is displayed.
 - ↳ The play icon is next to current chapter.
- 2 Tap a chapter.
 - ↳ Play starts from the chapter.
 - ↳ To return to the play screen, tap the artwork again.







Select play options


On the play screen, tap icons to select play options:

 Tap to switch to the library, play, or artwork screens.



 Tap to pause/ resume play.

 Tap to skip titles/ chapters; To select your navigation option, tap  and select **[Navigation mode]**. Hold to search within current book.

 Tap to select a play speed. Alternatively, tap  and select **[Playback speed]**.

 Add a bookmark to current play time.

Tip

- When you tap  /  to skip to previous or next chapters, play starts from where you stopped last time in the chapter.


To return to the Home screen,

- press .


Use bookmarks

On an audiobook, you can add up to 10 bookmarks to the play time. Start play from the bookmarked play time as needed.


To add a bookmark,

- On the play screen, tap .
 - ↳ A bookmark is added to current play time.


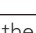
To play from a bookmarked play time,

- On the play screen, tap  and select **[Bookmarks]** > **[Go to bookmark]**. Tap an option.


To delete a bookmark,

- On the play screen, tap  and select **[Bookmarks]** > **[Delete bookmark]**. Tap an option.

Delete audiobooks

- 1 Tap  to select the library view.
- 2 Tap  and select **[Delete Audiobook]**.
- 3 Tap the checkbox to select options.
- 4 Confirm as prompted.
 - ↳ Selected items are deleted.

Alternatively,

- On the play screen, press  > **[Delete Audiobook]**.
 - ↳ Current audiobook is deleted from the player.

12 BBC iPlayer (available in the UK only)

With BBC iPlayer, you can now catch up on your favorite BBC programs from the past seven days on **MUSE**.

Sync TV/ radio programs to the player

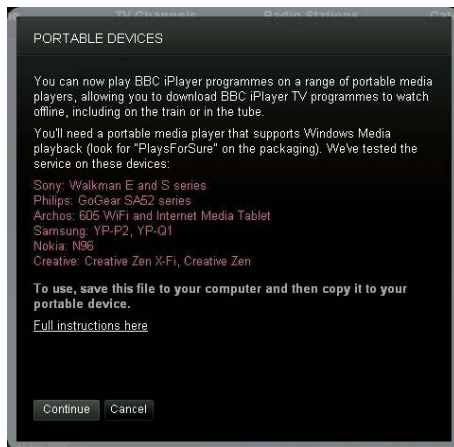
From www.bbc.co.uk/iplayer, download TV/ radio programs to a PC. Through **Windows Media Player 11**, sync the TV/ radio programs to **MUSE**.

Download TV/ radio programs to the PC

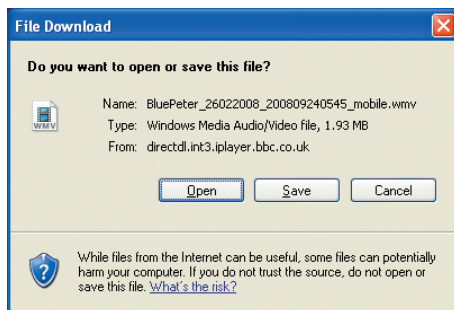
- 1 Connect your PC to the Internet.
- 2 From www.bbc.co.uk/iplayer, download TV/ radio programs:
 - Click to select a program;
 - Click the the **Download** button, and select **For portable devices** in the drop-down list;



- When the following screen is displayed, click **Continue**.



- 3 Save the program to the computer.
 - When the following screen is displayed, click **Save**.



Sync to the player



- 1 Launch **Windows Media Player 11** on your PC.
- 2 Connect the player to the PC. Wait until the player is recognized by **Windows Media Player 11**.
 - On the player, make sure that you have selected **[MTP]** in *** > [PC connection preference]**.
- 3 Sync the TV/ radio programs to **MUSE**:
 - On **Windows Media Player 11**, click **Library > Add to Library** to add the files to the library;
 - Click the **Sync** tab;
 - Drag and drop the selected items to the **Sync list**;
 - Click the **Start Sync** button.



Note

- Each program of BBC iPlayer is protected with a digital license and can be synchronized to any portable device for up to five times.
- For more help with the BBC iPlayer, see http://iplayerhelp.external.bbc.co.uk/help/download_programmes/sideload.
- **BBC iPlayer is only available in the UK.**

Find the TV/ radio programs on the player

On the player, find the videos in , and the audio programs in .

13 Recordings

Make recordings

With **MUSE**, you can record:

- voice through the built-in microphone; or
- radio programs that play on the **MUSE**.

Record voices

- 1 From the Home screen, go to .
 - If necessary, tap to switch between two pages.
- 2 Tap to switch to the recording screen.
- 3 Make sure that the microphone is close to the sound source.
- 4 Do the following to start, pause, or stop recording.

/ Tap to start, pause, or resume recording.

Tap to stop recording.

↳ Recordings are saved to > **Recordings** > **VOICE**. (Filename format: REC-YYYYMMDD-XXX.MP3, where YYYYMMDD is the year, month and day of the recording, and XXX is the recording number that is generated automatically.)

- 5 Tap to switch to the recordings library.



Record from the FM radio

Record radio programs when you listen to the FM radio.






- 1 Tune in to a radio station.
- 2 On the radio play screen, tap to switch to the recording screen.
- 3 Do the following to start, pause, or stop recording.

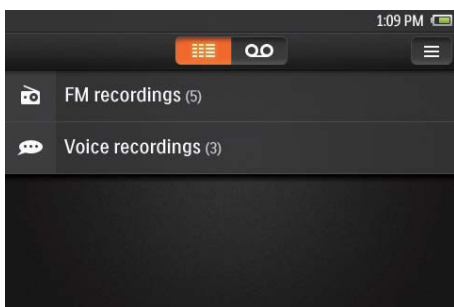
/ Tap to start, pause, or resume recording.

Tap to stop recording.



↳ Recordings are saved to > **Recordings** > **FM**. (Filename format: FMREC-YYYYMMDD-XXX.MP3, where YYYYMMDD is the year, month and day of the recording, and XXX is the recording number that is generated automatically.)

Play recordings


- 1 From the Home screen, go to .
 - If necessary, tap  to switch between two pages.
- 2 Tap  to switch to the library screen.
 - ↳ In the recordings library, existing recordings are displayed.
- 3 Tap a recording to start play.
- 4 Tap  /  to pause/ resume play.



Delete recordings

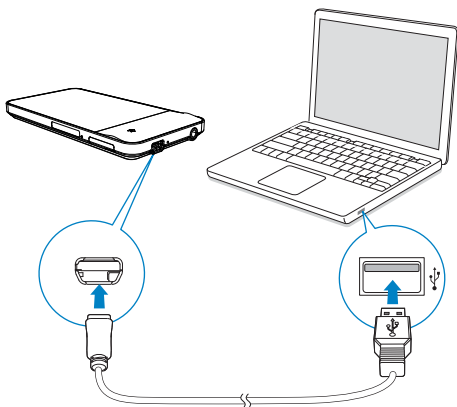
- 1 On the list of recordings,
 - Tap  and select **[Delete]**.
 - 2 Tap the checkbox to select options.
 - 3 Confirm as prompted.
 - ↳ Selected items are deleted.
- Alternatively,
- 1 Play a recording.
 - 2 On the play screen, tap  and select **[Delete]**.

14 Text reader


Go to  to play text files (.txt) from the media library on the player.

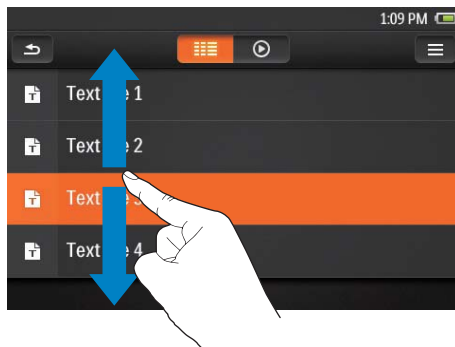
Add text files to the player

- 1 Connect **MUSE** to a computer.
- 2 On the PC, under **My Computer** or **Computer**,
 - select **MUSE**, and create file folders.
- 3 On the PC, drag and drop files to the file folders on the **MUSE**.
 - Alternatively, drag and drop file folders from the PC to **MUSE**.

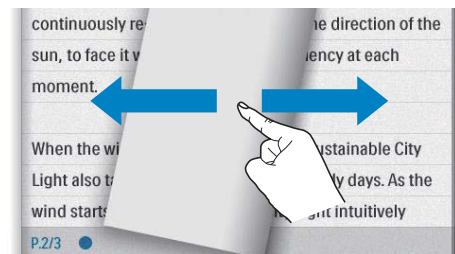


Read text files



- 1 Tap  to select the library view.
 - ↳ The text files are displayed.
- 2 Swipe your finger up/ down to browse through the list of options. Tap an option to start play.




- 3 Swipe your finger right/ left to turn over pages.

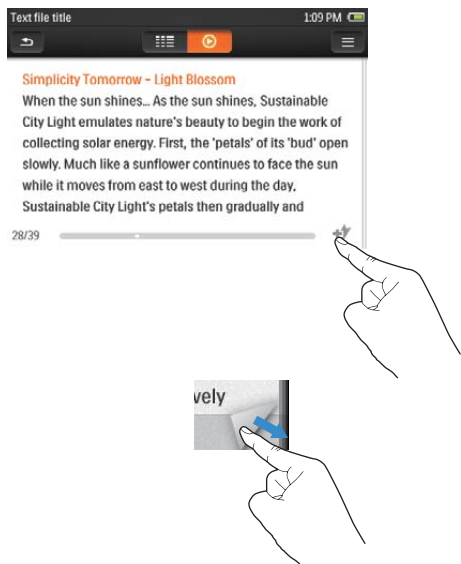


To increase or decrease the font size,


- On the play screen, tap  to select an option. If necessary, tap  to go to the play screen.

To add a bookmark,



- Tap  at the corner of the page.
 - ↳ Current page is folded at the corner:
- To remove the bookmark, drag your finger on the corner:




To go to the bookmarked portion,

- On the play screen, tap  and select [Go to bookmark]. Select an option.

Delete text files

- 1 Tap  to select the library view.
- 2 Tap  and select [Delete].
- 3 Tap the checkbox to select options.
- 4 Confirm as prompted.
 - ↳ Selected items are deleted.

15 Folder view

Go to  to view and play media files from the media library on the player.

Organize files by file folder

On a PC, organize files on the player by folder in the Windows explorer.

- 1 Connect **MUSE** to a PC.
- 2 On the PC, under **My Computer** or **Computer**,
 - select **MUSE**, and create file folders.
- 3 On the PC, drag and drop music files to the file folders on the **MUSE**.
 - Alternatively, drag and drop file folders from the PC to **MUSE**.

Find files by folder

- Locate the files/ folders as you organized in Windows Explorer.

To find files that are transferred through the software for media management ,

- Go to the default file folders on the player:

Music: for music files that you sync to the player;

Video: for video files that you sync to the player;

Playlists: for playlists that you sync to the player, and the playlists-on-the-go that you create on the player;

SERVICE: for the audiobooks that you sync to the player through **AudibleManager**, or the

Rhapsody channel lists that you sync to the player through the **Rhapsody** software;


Recordings: for voice or *FM recordings that you make on the player.

Note


- *The feature of FM radio recording is available with some versions only. See the onscreen menu of the player to find out which features are available to you.

Manage files on the player

To delete folders/ files from the player,

- 1 On the screen of folders/ files, tap  and select **[Delete]**.
 - ↳ Checkboxes are displayed next to the folders or files.
- 2 Tap the checkbox to select folders/ files.
- 3 Confirm your option as prompted.

To copy or move folders/ files to the SD card,

- 1 On the screen of folders/ files, tap  and select **[Copy]** or **[Move]**.
 - ↳ Checkboxes are displayed next to the folders or files.
- 2 Tap the checkbox to select folders/ files.
- 3 Confirm your option as prompted.

16 Settings

From the Home screen, go to ***** to select your settings.

- Swipe up or down to scroll through lists of options. Tap an option to select it;
- Tap **↑** to go to the Home screen;
- Tap **↶** to go to the previous screen.

Sleep timer

During play or in idle mode, the **MUSE** can switch off automatically after a certain time duration.

- In **[Sleep timer]**, tap to select an option.
 - ↳ After the selected time duration, the device is switched off automatically.

Display settings

In **[Display settings]**, select your display options:

[Brightness] Drag the slider to change the display brightness.

[Backlight timer] After the selected time duration, the screen turns off automatically. To save battery power, select a low value.

Date and time

In **[Date and time]**, select date/ time display options.

[Set date] To set the date, swipe up/down to select an option.

[Set date format] Select in what sequence the year, month, and date are displayed.

[Set time] To set the time, swipe up/down to select a digit.

[Set time format] Select how to show time, in 12-hour or 24-hour format.

[Show time in header] Select whether to show time on the top status bar.

Language

In **[Language]**, select a language for the player:

PC connection preference

In **[PC connection preference]**, select how the player is connected to a PC. The player allows the access by a PC through USB Mass Storage Class (MSC), or Media Transfer Protocol (MTP).

[MSC] *allows the player to work as **Philips Songbird** drive. Click the **Philips Songbird** drive to start the program installation on the PC.

[MTP] during the sync to the player, allows music and videos to be converted to playable formats through **Philips Songbird** or other software for media management.



Tip

- *Make sure that you select **[Enable]** in * > **[CD installer]**.

Information

In **[Information]**, learn the following information about the device:

[Firmware version:] current firmware version. Check the firmware version when you update firmware from the support website.

[Model:] full product name. Check the full product name when you update firmware from the support website.

[Support site:] web site that provides support for the device

[Capacity:] memory size

[Free space:] space available

[Songs] space that songs occupy

[Pictures] space that pictures occupy

[Videos] space that videos occupy

Format device

Format the player. You remove all the data that are stored on the player:

- Select **[Format device]**, and then, select **[Yes]** as prompted.

Factory settings

In **[Factory settings]**, restore the player to factory settings. Files transferred to the player are retained.

SafeSound



With the by-packed earphones, **SafeSound** allows you to listen to music in a safe way. When you listen to music through the earphones, the sound pressure on your ears is estimated¹ based on the electrical characteristics of the player and earphones. Then, the estimate is compared against the reference levels² of sound pressure. As a result, icons of different colors can be displayed to indicate status of sound pressure and the levels of risks to hearing damage.



Tip

- ¹The methodology is based on European norm (50332-1/2).
- ²The reference levels come from the minimum requirement for health and safety that the European directive 2003/10/EC provides for the noises exposed to individuals.

To select the **SafeSound** options on the Home screen,

- Tap . If necessary, tap  to switch between the two pages.

Weekly overview

In **[Weekly overview]**, find the accumulated sound pressure that your ears receive on each day over the past week.

Different colors are used to represent the risks to hearing damage. For your hearing safety, change your time of music listening on each day.



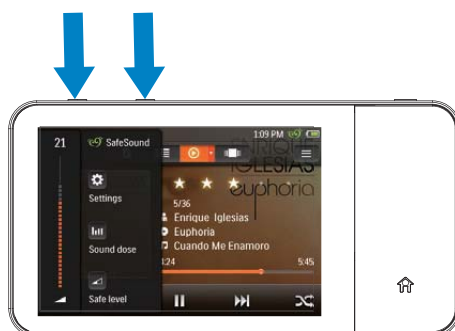
To reset the data,

- In **[Weekly overview]**, select **[Reset]**.

SafeSound settings

To select the **SafeSound** settings on the **SafeSound** screen,

- Tap .






To monitor the sound pressure,




During music play, check the color of the icon to monitor status of sound pressure. Accordingly, have a break or change the volume level when you listen to music in the volume over a certain time duration.

1 In **[SafeSound settings]**, select **[Show status bar icon]**.

- ↳ The status icon is displayed in different colors according to current sound pressure.

	Level of sound pressure	Maximum duration
	more than 90 decibels	30 minutes a day
	85 to 90 decibels	2 hours a day
	80 to 85 decibels	5 hours a day

2 To check the sound pressure that your ears receive over one week,

- Press  /  on the music play screen;
 - ↳ The **SafeSound** screen is displayed.
- Tap .

Auto safe level

If you select a volume level higher than the safe one, [Auto safe volume] can have the volume level gradually adjusted to the safe one.

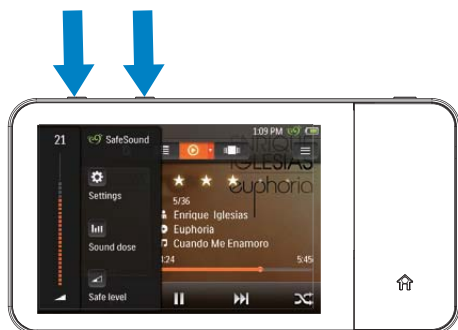
- In [SafeSound settings], select [Auto safe volume] > [On].

To select the safe level manually,

- 1 On the music play screen, press ◀ or ▶.
↳ The SafeSound screen is displayed.
- 2 Select ◀.

Activate

- In [Activate], select [On].
↳ You switch on the SafeSound function.
↳ If you press the volume button ◀ / ▶ on the music play screen, the SafeSound screen is displayed.



CD installer

If you have selected [MSC] in * > [PC connection preference], the [CD installer] options are displayed.

In [CD installer], select [Enable] to allow the player to work as Philips Songbird drive. Double click on the drive to start the program installation on the PC.

Tip

- After you repair the player, the CD-ROM partition and Philips Songbird installer are removed from the player (see 'Repair the player through Philips Songbird' on page 58). More space is available on the player.

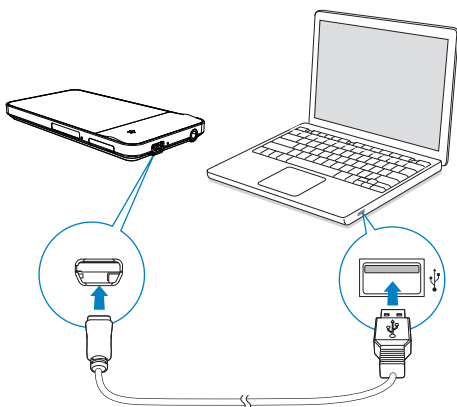
17 Update the firmware through Philips Songbird

MUSE is controlled by an internal program called firmware. Newer versions of the firmware may have been released after you have purchased **MUSE**.

Through **Philips Songbird**, you can check for and install firmware updates for **MUSE** over the Internet.

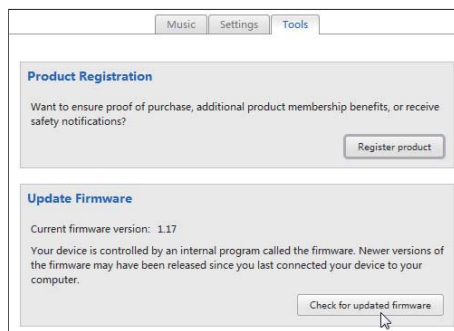
Tip

- Your music files are not affected by a firmware update.



- 1 Make sure that you have connected your PC to the Internet.
- 2 Connect the **MUSE** to the PC by using a USB cable.
- 3 On the PC, launch **Philips Songbird**.
 - If necessary, click **Start > Programs > Philips > Philips Songbird**.

- 4 Click **MUSE** in the Player pane. Then, select **Tools > Check for updated firmware** in the pop-up window.
 - ↳ **Philips Songbird** checks for updates and installs new firmware from the Internet, if available.



- 5 Follow the onscreen instructions.
 - ↳ Downloading and installation of firmware update start automatically.
 - ↳ The **MUSE** restarts after the firmware is updated and is ready for use again.

Note

- Wait until the update is completed, then disconnect the **MUSE** from the computer.

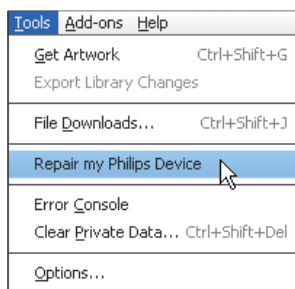
18 Repair the player through Philips Songbird

If **MUSE** is not working properly or the display freezes, you can reset it without losing data:

To reset MUSE?

- Insert a pen tip or other object into the reset hole located at the base of **MUSE**. Hold until the player shuts down.

If you fail to reset the player, repair the player through Philips Songbird:



- 1 On your PC, launch **Philips Songbird**.
- 2 In **Philips Songbird**,
 - select **Tools > Repair my Philips Device**;
 - select **MUSE** in the pop-up list.
- 3 Connect the player to the PC.
 - **Make sure that you follow the onscreen instructions on how to connect the player to the PC.**
- 4 Follow the onscreen instructions to complete the repair.

Tip

- After you repair the player, the CD-ROM partition and the **Philips Songbird** installer are removed from the player. More space is available on the player.

19 Technical data

Power

Power supply: 1,100 mAh Li-ion polymer internal rechargeable battery

Play time¹

- music: up to 20 hours (**SafeSound** on); up to 20 hours (**FullSound** on, **SafeSound** on); up to 20 hours (**FullSound** on); up to 24 hours (**FullSound** off)

- video (WMV): up to 5 hours

- FM radio: up to 20 hours

Software

Philips Songbird: to update firmware and transfer music

Connectivity

Headphone 3.5 mm

USB 2.0 High speed

Sound

Channel separation: 50 dB

Frequency Response: 20 - 18,000 Hz

Output power: 2 x 2.7 mW (for EU version);

2 x 10.5 mW (for Non-EU version)

Signal to noise ratio: > 85 dB

Audio playback

Supported formats:

Bit rates	Sampling rates
-----------	----------------

MP3:

8 - 320 kbps and VBR	8, 11.025, 16, 22.050, 32, 44.1, 48 kHz
----------------------	---

WMA:

5 - 320 kbps	8, 11.025, 16, 22.050, 32, 44.1, 48 kHz
--------------	---

FLAC:

up to 1.5 Mbps	48 kHz
----------------	--------

APE:

up to 1.5 Mbps	48 kHz
----------------	--------

OGG:

up to 320 kbps	8 - 48 kHz
----------------	------------

AAC:

up to 320 kbps	8 - 48 kHz
----------------	------------

Video playback

Supported formats:

MPEG4 (in .avi and .mp4)

RMVB

WMV

Picture display

Supported formats:

JPEG

BMP

PNG

GIF

Storage media

Built-in memory capacity²:

SA3MUS08 8GB NAND Flash

SA3MUS16 16GB NAND Flash

SA3MUS32 32GB NAND Flash

Display

Touch-sensitive color LCD 480 x 320 pixels (HVGA)



Note

- ¹ Rechargeable batteries have a limited number of charge cycles. Battery life and number of charge cycles vary by use and settings.
- ² 1GB = 1 billion bytes; available storage capacity is less. Full memory capacity may not be available as some memory is reserved for the player. Storage capacity is based on 4 minutes per song and 128 kbps MP3 encoding.

System requirements

- Windows® XP (SP3 or above) / Vista / 7
- Pentium III 800 MHz processor or higher
- 512 MB RAM
- 500 MB hard disk space
- Internet connection
- Windows® Internet Explorer 6.0 or later
- CD-ROM drive
- USB port

