

Register your product and get support at  
[www.philips.com/welcome](http://www.philips.com/welcome)

# **Philips Sonicare Airfloss 100 SERIES**

**PHILIPS**

<b>1</b>	Important Safeguards .....	3
<b>2</b>	What's in the box .....	6
<b>3</b>	Before first use .....	7
<b>4</b>	Preparing for use .....	8
<b>5</b>	Using .....	9
<b>6</b>	Auto off.....	10
<b>7</b>	Cleaning .....	11
<b>8</b>	Storing your AirFloss .....	12
<b>9</b>	Disposing or recycling at end of product life .....	13
<b>10</b>	Support .....	14

# **1 IMPORTANT SAFEGUARDS**

## **READ ALL INSTRUCTIONS BEFORE USE**

### **DANGERS**

To reduce the risk of electrocution:

- Do not place or store product where it can fall or be pulled into a bathtub, washbasin or sink.
- Do not place charger in or drop into water or other liquid, unplug the charger immediately if this should occur.
- After cleaning, make sure the charger is completely dry before you connect it to the mains.

### **WARNINGS**

To reduce the risk of burns, electrocution, fire, or physical injury:

- DO NOT use alcohol or other cleaning fluids in the reservoir as it may be an ingestion hazard.
- DO NOT use attachments other than those recommended by the manufacturer.
- DO NOT plug the charger into an outlet with a voltage other than specified on the bottom of the charger. This product is designed to operate within a range of 100 to 240 volts. Voltage converters DO NOT guarantee voltage compatibility.
- DO NOT use hot water so as to avoid physical injury.
- DO NOT use the charger outdoors.
- DO NOT drop or insert any foreign objects into the reservoir.

- DO NOT use attachments other than those recommended by the manufacturer.
- Never force the plug into an outlet; if the plug does not easily fit into the outlet, discontinue use.
- Keep the cord away from heated surfaces.
- Discontinue use if the nozzle, body, or charger body / cord appear damaged in any way. Refer to “Guarantee and Service” for service or repair.
- This product contains no user-serviceable parts. Refer to “Guarantee and Service” if AirFloss no longer works properly or needs repair.
- Use this product only for its intended use as described in this document or as recommended by your dental professional.
- This product is not intended for use by persons (including children) with reduced physical, sensory, or mental capabilities, or lack of experience and knowledge, unless they have been given supervision or instruction concerning use of the appliance by a person responsible for their safety.
- Children should be supervised to ensure that they do not play with the appliance.
- AirFloss is a personal care device and is not intended for use on multiple patients in a dental office or institution.
- Do not direct the spray under the tongue or into the ear, nose, eye, or other sensitive areas. See “Using AirFloss” for correct usage.
- Avoid applying excessive nozzle tip pressure.

## **MEDICAL WARNINGS**

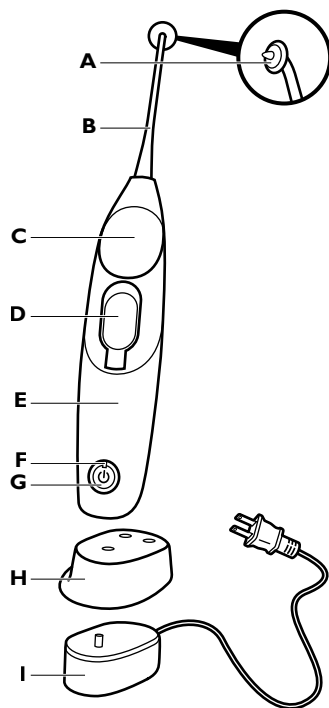
- Consult your dental professional before you use this product if you have had oral or gum surgery in the previous two (2) months.
- Contact your dental professional if excessive bleeding occurs after using this product or bleeding continues to occur after one (1) week of use.
- Discontinue use of this product and contact a physician/dentist if discomfort or pain is experienced.
- This product complies with the safety standards for electromagnetic devices. If you have a pacemaker or other implanted device, contact your physician or the device manufacturer prior to use.
- Consult your physician if you have other medical concerns.

## **Electromagnetic fields (EMF)**

This Philips appliance complies with all standards regarding electromagnetic fields (EMF). If handled properly and according to the instructions in this user manual, the appliance is safe to use based on scientific evidence available today.

# **SAVE THESE INSTRUCTIONS**

2

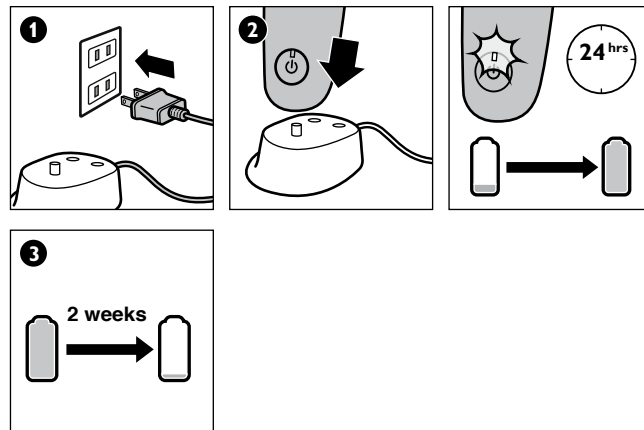


- |                                    |   |
|------------------------------------|---|
| <b>A</b> Guidance tip              | <b>F</b> Charge indicator                           |
| <b>B</b> Nozzle                    | <b>G</b> Power on/off button                        |
| <b>C</b> Activation button         | <b>H</b> Removable charger cover<br>(select models) |
| <b>D</b> Water reservoir and cover | <b>I</b> Charger                                    |
| <b>E</b> Handle                    |   |

3

### BEFORE FIRST USE

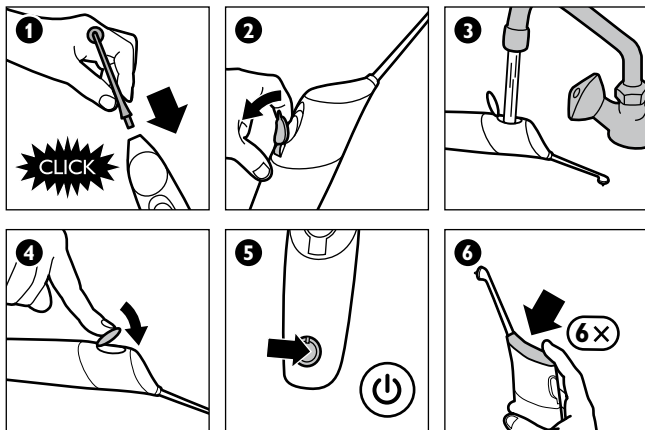
**Charge AirFloss** - Charge for 24 hours before first use. Charge indicator flashes green until fully charged. Rapid yellow flashing indicates charge is extremely low (fewer than 3 uses left). AirFloss is designed to last 2 weeks (or 14 uses) on a single charge.



## 4

### PREPARING FOR USE

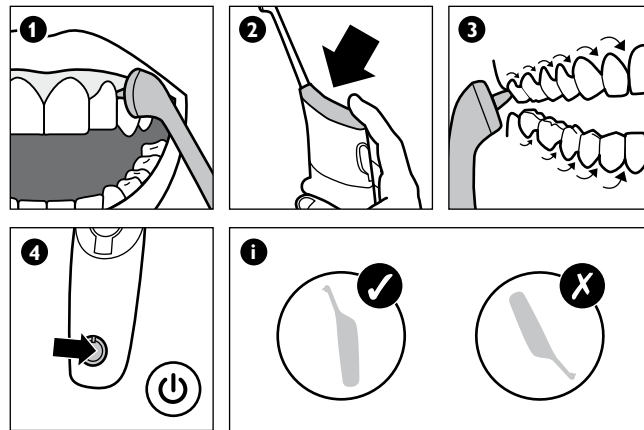
**Preparing AirFloss** - To use, attach nozzle, fill reservoir with water or mouthwash. After filling the reservoir, press the power on/off button to turn on, then press the activation button approximately 6 times or until spray is produced. The reservoir holds enough liquid for approximately 2 uses. Replace the nozzle every 6 months for optimal results.



## 5

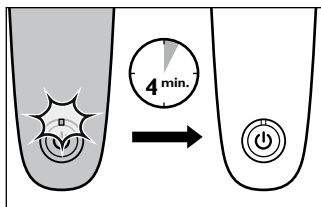
### USING

**Use AirFloss** - AirFloss is designed to be used on the outside of the teeth. Place the tip between teeth and apply gentle pressure. Press activation button to deliver a burst of air and water. Glide the guidance tip along the gum line until you feel it settle between the next two teeth. Press the activation button again and repeat for all spaces including behind your back teeth. Press power on/off button to turn power off after use.



## 6

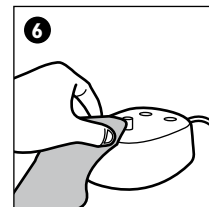
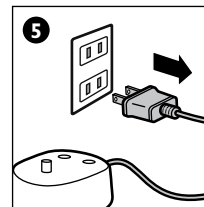
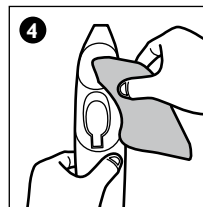
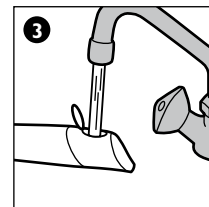
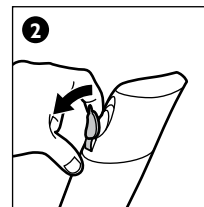
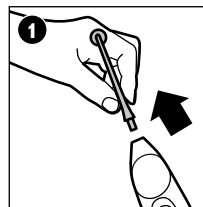
## AUTO OFF



## 7

## CLEANING

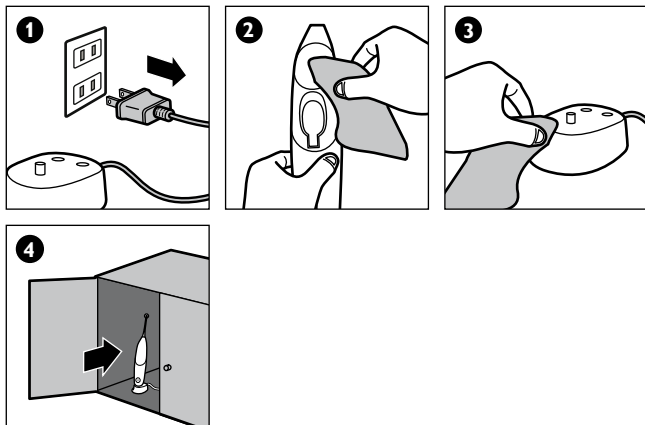
**Cleaning** - Remove the nozzle and rinse with water. Use a cotton-tipped swab to wipe down the reservoir, if desired. Avoid getting foreign objects inside. The use of cleaning agents inside the device is not recommended. Do not clean in the dishwasher or any other sanitizing devices.



## 8

## STORING YOUR AIRFLOSS

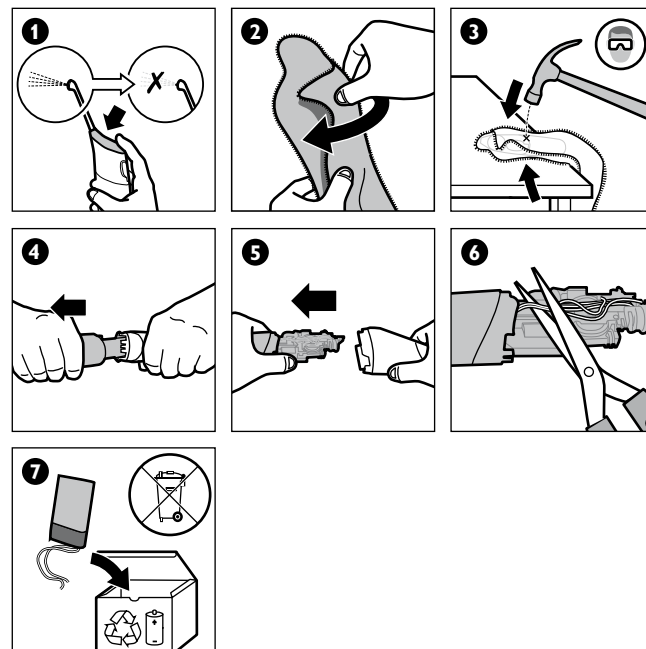
**Storing** - If AirFloss will not be used for an extended period of time, empty water from reservoir, press activation button until no spray is produced, unplug the charger, clean the product, and store it in a cool, dry place away from direct sunlight.



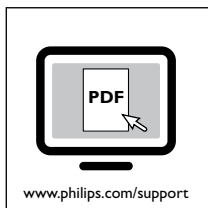
## 9

## DISPOSING OR RECYCLING AT END OF PRODUCT LIFE

**Please note this process is not reversible** - The rechargeable battery inside the AirFloss cannot be replaced but can be removed for recycling. Please contact your local waste management for recycling requirements. Only remove the battery at the end of the product's life. Doing so earlier will destroy the product. Deplete the battery charge by repeatedly pressing the activation button until AirFloss can no longer produce any bursts of air. Observe basic safety precautions.



## 10 SUPPORT



### SUPPORT

For product information and purchase, or for product support, please contact your local Philips Customer Care Center. The Customer Care Center in your area may be found in the Guarantee and Service booklet you received with your product and at [www.philips.com/Sonicare](http://www.philips.com/Sonicare).

### GUARANTEE AND SERVICE

Philips guarantees its products for 2 years after the date of purchase.

Defects due to faulty materials and workmanship will be repaired or replaced at Philips' expense provided that convincing proof of purchase in the qualifying period is provided.

### WARRANTY EXCLUSIONS

What is not covered under the two-year warranty:

- Nozzle
- Damage caused by misuse, abuse, neglect, alterations or unauthorized repair
- Normal wear and tear, including chips, scratches, abrasions, discoloration or fading

### IMPLIED WARRANTIES

ANY IMPLIED WARRANTIES, INCLUDING IMPLIED WARRANTIES OF MERCHANTABILITY AND FITNESS FOR A PARTICULAR PURPOSE, SHALL BE LIMITED TO THE DURATION OF THE EXPRESS WARRANTIES SET FORTH ABOVE. IN SOME STATES LIMITATIONS ON DURATION OF IMPLIED WARRANTIES DO NOT APPLY.

### LIMITATION OF REMEDIES

IN NO EVENT SHALL PHILIPS OR ANY OF ITS AFFILIATED OR SUBSIDIARY COMPANIES BE LIABLE FOR ANY SPECIAL, INCIDENTAL OR CONSEQUENTIAL DAMAGES BASED UPON BREACH OF WARRANTY, BREACH OF CONTRACT, NEGLIGENCE, TORT, OR ANY OTHER LEGAL THEORY. SUCH DAMAGES INCLUDE, WITHOUT LIMITATION, LOSS OF SAVINGS OR REVENUE; LOSS OF PROFIT; LOSS OF USE; THE CLAIMS OF THIRD PARTIES INCLUDING, WITHOUT LIMITATION, DENTISTS AND DENTAL HYGIENISTS; AND COST OF ANY SUBSTITUTE EQUIPMENT OR SERVICES. SOME STATES DO NOT ALLOW THE EXCLUSION OR LIMITATION OF INCIDENTAL OR CONSEQUENTIAL DAMAGES.



[www.philips.com/Sonicare](http://www.philips.com/Sonicare)

©2011 Koninklijke Philips Electronics NV (KPENV). All rights reserved. PHILIPS and the Philips shield are registered trademarks of KPENV. Easy-start, Quadpacer, Sonicare and the Sonicare logo are trademarks of Philips Oral Healthcare, Inc. and/or KPENV.

Protected by U.S. and international patents.  
Other patents pending.  
Reg. U.S. Pat. & Tm. Off.



## Mixed Sources

Product group from well-managed forests and other controlled sources  
[www.fsc.org](http://www.fsc.org) Cert no. CU-COC-813596  
© 1996 Forest Stewardship Council

Sustainable paper

4235 020 48881