

# PHILIPS

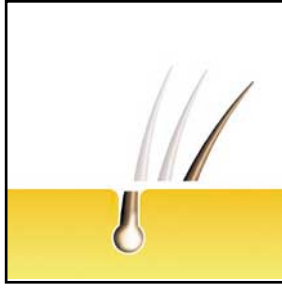
## Ladyshave

Wet/Dry cordless razor

HP2710



**Battery Operated**  
**Shaves Wet or Dry**  
**2 Built-in Trimmers**  
**Fully Submersible**  
**60-Day Money-Back**  
**Guarantee**



## HP2710 LadyShave

Wet/Dry Cordless Razor

### FEATURES

- **Ladyshave's S-Shaped Design** fits perfectly in a woman's hand for the ultimate in shaving comfort and ease-of-use
- **Angled Shaving Head** for easier shaving
- **Total Body Safe Shaving System** features one dual function foil specifically designed to give a comfortable and smooth shave for all body parts including underarms and bikini line
- **2 Trimmers** for more efficient long hair trimming
- **Cordless — operates on 2 "AA" 1.5V Batteries** (not included)
- **Shaves Wet or Dry** for a close, smooth, comfortable shave
- **Fully Submersible** for use in the shower or bath
- **Shaving Head** simply pops off for easy cleaning
- **Protective Cap** for shaving head
- **Cleaning Brush**
- **Philips 60-Day Money-Back Guarantee**
- **Full Two Year Warranty**

### ACCESSORIES (not included)

- **HP2910 Ladyshave Shaving Foil**
- **HP2911 Ladyshave Cutter Block**

### TECHNICAL DATA

**UPC Code Number:** 075020 17271 6

**Dress Carton Dimensions (in.):** 3.98 x 2.72 x 7.60

**Cube (ft.):** .04

**Weight (lb.):** 7.68 oz.

**Cost per Unit:**

**Master Carton Quantity:** 6

**Master Carton Dimensions (in.):** 7.87 x 6.5 x 12.2

**Cube (ft.):** .36

**Weight (lb.):** 3 lb. 5.76 oz.

**Cost per Master Carton:**

