



Cordless  
Wet/Dry  
Razor  
HP6309, HP6307

PHILIPS

4222 002 29421

# IMPORTANT SAFETY INSTRUCTIONS

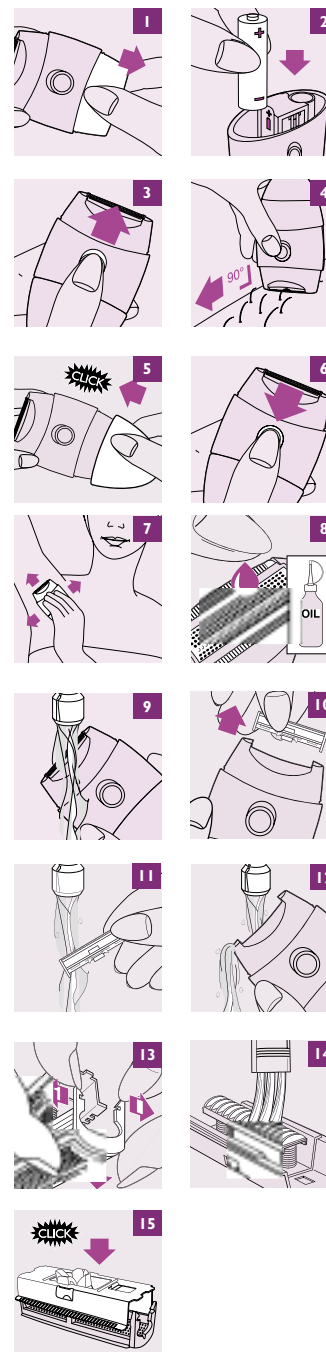
When using a battery operated appliance, basic precautions should always be followed, including the following.

**Read these instructions for use carefully before using the appliance and save them for future reference.**

## WARNING

- ▶ Close supervision is necessary when this product is used by, on or near children or invalids.
- ▶ This appliance is intended for household use only, as described in this manual.
- ▶ Only use attachments that are recommended by Philips Electronics North America Corporation.
- ▶ Never drop or insert any objects into any opening of the appliance.
- ▶ Never store the appliance in direct sunlight, or in a pouch at temperatures above 140°F.
- ▶ Keep the appliance away from heated surfaces.
- ▶ Always put the Protective Cap on the Shaving Head before storing the appliance.
- ▶ Do not operate the appliance in places where aerosol (spray) products are being used or where oxygen is being administered.
- ▶ **Always check the Foil before using the appliance. Do not use the appliance if the Foil or the Trimmer is damaged, as injury may occur.**
- ▶ Never operate this razor if it is not working properly or if it has been dropped or damaged. Return the razor to an Authorized Norelco Service Location for examination and repair.
- ▶ If the appliance will not be used on a regular basis, remove the batteries when storing the appliance to prevent possible damage due to chemical leakage. If the batteries do leak, remove them carefully. Never allow your bare skin to come into contact with the leaking fluid.
- ▶ **Dispose of used batteries properly.**
  - Do not wrap the batteries in metal or aluminum foil.
  - Do not incinerate the batteries. Batteries may explode when overheated.
  - Wrap the batteries in a newspaper before discarding.
  - It is suggested that you contact your local town/city officials to determine the proper battery redemption site(s) in your area.
- ▶ **The appliance is water-resistant and can be used in the bathtub or shower. Do not submerge the appliance in water for an extended period of time.**

- ▶ **B** Shaving Head: equipped with two Trimmers (C and E) and a Shaving Foil (D).
- ▶ **C** Straight Trimmer: to remove longer hairs from arms, legs and bikini area.
- ▶ **D** Shaving Foil: to remove shorter hairs.
- ▶ **E** Curved Trimmer: to shave underarms.
- ▶ **F** On/Off switch:
  - I = on
  - 0 = off
- ▶ **G** Battery Compartment
- ▶ **H** Cover of Battery Compartment
- ▶ **I** Brush



### 60-Day Money-Back Guarantee

If you are not fully satisfied with your Norelco Sparkle Razor, Norelco will refund you the full purchase price. **The razor must be shipped prepaid by insured mail, insurance prepaid, have the sales slip indicating purchase price and date of purchase enclosed.** The razor must be post-marked **no later than 60 days** after the date of purchase. Norelco reserves the right to verify the purchase price of the razor and limit refunds not to exceed suggested retail price.

Send dated sales receipt, your complete name and address as indicated below, and the razor, prepaid to:

**Norelco Consumer Products Company**  
A Division of Philips Electronics North America Corporation  
450 North Medinah Road, Dock 16  
Roselle, IL 60172-2329

Please allow 4-6 weeks for delivery of check. (Please Print)

Name \_\_\_\_\_  
Address \_\_\_\_\_  
City \_\_\_\_\_  
State \_\_\_\_\_ Zip \_\_\_\_\_  
Day time Telephone No. (\_\_\_\_) \_\_\_\_\_  
E-mail Address \_\_\_\_\_  
REASON FOR RETURNING:  
\_\_\_\_\_  
\_\_\_\_\_  
\_\_\_\_\_  
\_\_\_\_\_  
\_\_\_\_\_  
\_\_\_\_\_

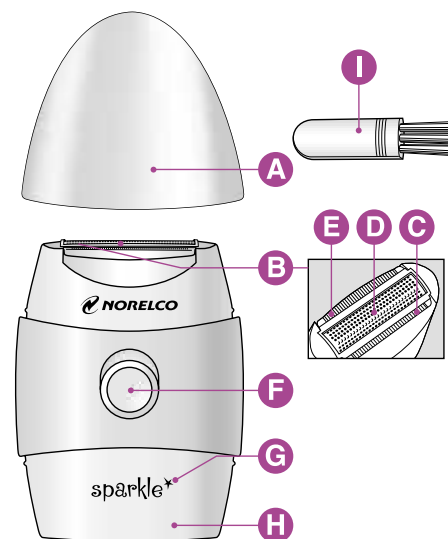
### PUT IT TO THE TEST & SHAVING TIPS

Like many new products, your Norelco Sparkle Razor may take a little getting used to. If you are using a battery Razor for the first time, or if you've been using a different brand, your skin may need time to adapt to the Total Body Shaving System. Give yourself a little time to practice and determine the best stroking motions for the best shave.

**Use it exclusively for 3 weeks, or a bit longer for sensitive skin. If you alternate shaving or other hair removal methods during this adjustment period, it may become more difficult to adapt to the Norelco shaving system.**

At first you may not get as close a shave as you expect, or your skin may become slightly irritated. This is normal as your skin adjusts. After this adjustment period, you'll find that you can remove hair without irritating your skin, for a close, smooth shave.

The Norelco Sparkle Razor, with Total Body Shaving



# SAVE THESE INSTRUCTIONS

## FEATURES

Cordless- operates on 2 AA 1.5V batteries (not included)

- ▶ **A** Protective Shaving Head Cap
  - Replace Protective Cap on razor after each use to protect Foil
  - The Protective Cap can be placed on the bottom of the Razor during use to extend the Razor's length for easy handling.

system.....the choice for close, smooth shaving results. If you're not convinced after 21 days, Norelco will refund you the full purchase price, guaranteed.

## BEFORE USING YOUR NEW NORELCO RAZOR

- ▶ *This appliance is intended for household use only, as described in this manual.*
- ▶ *Before using, check Foil for wear or damage. If the Foil shows signs of wear or damage, do not use the Razor as injury may occur. Do not use it until the Foil has been replaced.*
- ▶ *For wet shaving, you may wish to prepare your skin with soap or shaving cream before shaving.*
- ▶ *For dry shaving, be certain that your skin is clean. If you have a sensitive skin, you may wish to apply talcum powder before and/or after shaving.*
- ▶ *When shaving your legs, underarms, or bikini line, it is not necessary to press hard to get a close shave. Pressing too hard may cause skin irritation, and the Razor will not function properly. In addition, do not use deodorant or alcohol-based lotions immediately before or after shaving. You may, however, want to use talcum powder.*
- ▶ *Clean the Razor regularly, for instructions see chapter 'Cleaning'.*
- ▶ *Do not submerge the Razor in water for extended periods of time.*
- ▶ *To keep the Razor water-resistant, keep the rubber sealing ring in the battery compartment clean and dry. Occasionally you may want to apply a thin coating of petroleum jelly to the ring to prevent it from drying out.*

## INSERTING OR REPLACING BATTERIES

- ▶ *Your new Norelco Razor requires 2 'AA' 1.5 Volt alkaline or carbon zinc batteries.*
- ▶ *Be sure your hands and the Razor are dry before inserting or replacing the batteries.*

**1** Make sure the Razor is in Off position.

**2** Remove the Battery Compartment Cover by pulling it in the direction of the arrow. (fig. 1)

**3** Insert the batteries as shown in the picture. Make sure that the (+) and (-) markings on the ends of the batteries match those on the inside of the Battery Compartment. (fig. 2)

**4** Place the Battery Compartment Cover back onto the Razor. You will hear a click.

- ▶ **If the appliance will not be used on a regular basis, remove the batteries when storing the appliance to prevent possible damage due to chemical leakage. If the batteries do leak, remove them carefully. Never allow your bare skin to come into contact with the leaking fluid.**

- ▶ **NOTE:** *the Razor will not operate if the batteries have been inserted incorrectly.*

## SHAVING LEGS OR BIKINI AREA

**1** Prepare legs for wet or dry shaving (see **BEFORE USING YOUR NEW NORELCO RAZOR**).

**2** Turn the Razor on by sliding the switch to position I. (fig. 3)

- 3** Hold the Razor so that Shaving Head is in full contact with your skin. Shave with smooth, steady strokes, against the direction of hair growth. (fig. 4)
- Stretch the skin with your free hand to make the hairs stand upright.-
  - Practice is best for optimum results.
  - Pressing too hard may cause skin irritation.

- ▶ **You can attach the Protective Cap to the bottom of the Razor when shaving legs or the bikini area. The Cap will extend the length of the Razor body, allowing you to reach these areas easily. (fig. 5)**

**4** Turn the Razor off by sliding the switch to position 0. (fig. 6)

## SHAVING UNDERARMS

**1** Prepare underarms for wet or dry shaving (see **BEFORE USING YOUR NEW NORELCO RAZOR**).

**2** Turn the Razor on by sliding the switch to position I. (fig. 3)

**3** Lift your arm until skin under arm stretches slightly.

- ▶ **For shaving other sensitive areas, stretch skin with your free hand to make the hairs stand upright.**

**4** Hold the Razor so that the Shaving Head is in full contact with the skin. Shave with gentle strokes, using light pressure. (fig. 7)

Pressing too hard may cause skin irritation, and Razor will not function properly.

**5** Do not use deodorant or alcohol-based lotions immediately before or after shaving. You may, however, want to use talcum powder.

**6** Turn the Razor off by sliding the switch to position 0. (fig. 6)

## CLEANING AND MAINTENANCE

- ▶ **Always switch Razor off before cleaning.**
- ▶ **Do not apply pressure or touch Shaving Head with hard objects as this may dent or damage Foil or Trimmers.**
- ▶ **Never clean, remove or replace Shaving Head while motor is on.**
- ▶ **It is recommended that you replace your shaving foil once a year.**
- ▶ **Check the Foil regularly.**
- ▶ **If damage occurs, replace the Foil.**
- ▶ **Never use the Razor if the Foil is damaged or broken.**

## AFTER EACH USE

After each use, the Razor should be quickly cleaned by rinsing it under running water or dipping and shaking it gently in water.

**IMPORTANT: DO NOT** keep Razor submerged in water for long period of time.

**IMPORTANT: DO NOT** submerge Razor in water while the Battery Compartment is open.

**IMPORTANT:** Always put the Protective Cap on the Shaving Head to prevent damage to the Foil.

- ▶ **NOTE:** *Use cold or lukewarm water. Never use cleaners such as alcohol, nail polish remover, corrosive detergents or scouring pads.*

**1** Turn the Razor off by sliding the switch to position 0.

**2** Rinse the Razor under the tap. (fig. 9)

**3** Remove the Shaving Head (fig. 10)

**4** Rinse the hairs off the Shaving Head. (fig. 11)

**5** Rinse the hairs off the Razor. (fig. 12)

**6** Put the Shaving Head back onto Razor. Make sure the Shaving Head clicks securely into place.

## ONCE A MONTH- CLEANING SHAVING HEAD

**IMPORTANT: DO NOT** apply pressure to the Shaving Foil.

**1** Remove the Shaving Head (fig. 10)

**2** Release the Shaving Foil unit from the trimmer unit (1) and separate the two units (2). (fig. 13)

**3** Brush the Shaving Foil and the Cutter Block carefully. (fig. 14)

**4** Place the Shaving Foil unit on a solid and flat surface and press the Trimmer unit back onto the Shaving Foil unit. (fig. 15)

**5** Put the Shaving Head back onto the Razor. Make sure the Shaving Head clicks securely into place.

**6** Always put Protective Cap on Shaving Head to prevent damage to Foil.

- ▶ **For the best shaving performance, it is suggested to lightly oil the Shaving Heads regularly by spreading a drop of mineral oil over the Foil and Trimmers. If this does not improve the performance of your Razor, it may be time to change the Foil. (fig. 8)**

## ASSISTANCE

- ▶ *For assistance or the Authorized Norelco Service Location nearest you, call toll free: 1-800-243-3050 or visit our Norelco website: www.norelco.com*

- ▶ *Authorized Norelco Service Location information is available 24 hours a day, 7 days a week.*

## ACCESSORIES

For maximum performance, replace your Norelco foil and cutter block once a year

- Model HP2904 Philips shaving foil
- Model HP2907 Philips cutter block

Razor accessories may be purchased at a store near you, an authorized Norelco Service Location, on our website [www.norelco.com](http://www.norelco.com) or by using the handy order form enclosed.

## FULL TWO-YEAR WARRANTY

Philips Electronics North America Corporation warrants each new Norelco Product, Model HP6309 and HP6307 (except foil and trimmers), against defects in materials or workmanship for a period of two years from the date of purchase, and agrees to repair or replace any defective product without charge.

**IMPORTANT:** This warranty does not cover damage resulting from accident, misuse or abuse, lack of reasonable care, the affixing of any attachment not provided with the product or loss of parts or subjecting the product to any but the specified batteries.\* Use of unauthorized replacement parts will void this warranty.

**PHILIPS ELECTRONICS NORTH AMERICA CORPORATION WILL NOT PAY FOR WARRANTY SERVICE PERFORMED BY A NON-AUTHORIZED REPAIR SERVICE AND WILL NOT REIMBURSE THE CONSUMER FOR DAMAGE RESULTING FROM WARRANTY SERVICE PERFORMED BY A NON-AUTHORIZED REPAIR SERVICE. NO RESPONSIBILITY IS ASSUMED FOR ANY SPECIAL, INCIDENTAL OR CONSEQUENTIAL DAMAGES.**

In order to obtain warranty service, simply take or ship the product postage prepaid to the nearest Authorized Norelco Service Location. It is suggested that for your protection you return shipments of product by insured mail, insurance prepaid. Damage occurring during shipment is not covered by this warranty.

**NOTE:** No other warranty, written or oral, is authorized by Philips Electronics North America Corporation.

This warranty gives you specific legal rights, and you may also have other rights which vary from state to state. Some states do not allow the exclusion or limitation of incidental or consequential damages, so the above exclusion and limitations may not apply to you.

\*Read enclosed instructions carefully.

Manufactured for:

Norelco Consumer Products Company

A Division of Philips Electronics North America Corporation

1010 Washington Blvd., Stamford, CT 06912-0015

## MADE IN CHINA

Norelco is a Registered Trademark of Philips Electronics North America Corporation.

Total Body and Sparkle are Trademarks of Philips Electronics North America Corporation.

PHILIPS is a Registered Trademark of Koninklijke Philips Electronics N.V.

© 2003 Philips Electronics North America Corporation. All Rights Reserved.

Ultra Close, Ultra Comfortable...Guaranteed!