

**PHILIPS**

***NORELCO***

***All in 1***  
**Grooming Kit**



**G485**  
**G480**

**Rechargeable**  
**Cordless**

Register your product and get support at  
[www.philips.com/norelco](http://www.philips.com/norelco)

# IMPORTANT SAFETY INSTRUCTIONS

When using an electrical appliance, basic safety precautions should always be followed, including the following:

**Read all instructions before using this appliance.**

## DANGER

**To reduce the risk of electric shock:**

1. Do not reach for a groomer/charging stand that has fallen into water. Unplug immediately.
2. Do not use while bathing or in a shower.
3. Do not place or store groomer/charging stand where it can fall or be pulled into a tub or sink. Do not place in or drop into water or other liquid.
4. Always unplug this groomer/charging stand from the electrical outlet immediately after using, except when groomer is (re)charging.
5. Unplug groomer/charging stand before cleaning.
6. When **discarding** groomer, unplug groomer to remove rechargeable battery. See Battery Removal Instructions.

## WARNING

**To reduce the risk of burns, fire, electric shock or injury to persons:**

1. Close supervision is necessary when this appliance is used by, on, or near children or invalids.
2. Use this groomer/charging stand for its intended household use as described in this manual. Do not use attachments not recommended by Philips Electronics North America Corporation.
3. Never operate this groomer if it has a damaged cord or plug, if it is not working properly, if it has been dropped, damaged, or dropped into water. For assistance call 1-800-243-3050.
4. Keep the groomer/charging stand, cord and any attachments away from heated surfaces.
5. Never drop or insert any object into any opening.
6. Do not operate, charge or plug in groomer/charging stand outdoors or where aerosol (spray) products are being used or where oxygen is being administered.
7. Always check foil, cutters, cutting unit and trimmers before using the groomer. Do not use the groomer if foil, cutters, cutting unit or trimmers are damaged, as injury may occur.
8. Always attach plug to groomer/charging stand first, then to outlet. To disconnect, turn on/off switch to "OFF" position, then remove plug from outlet.
9. To prevent possible damage to the cord, do not wrap cord around the groomer/charging stand.
10. Never put groomer/charging stand in direct sunlight or store at a temperature above 140°F.
11. This groomer is for use on human hair only. Do not use this groomer for any other purpose.
12. Always store your groomer, charging stand, attachments and power plug in a moisture-free area. Make sure the cord is disconnected from the groomer/charging stand.

# SAVE THESE INSTRUCTIONS

**IMPORTANT: YOUR GROOMER CONTAINS A NICKEL-CADMIUM RECHARGEABLE BATTERY.**

See Battery Removal Instructions.

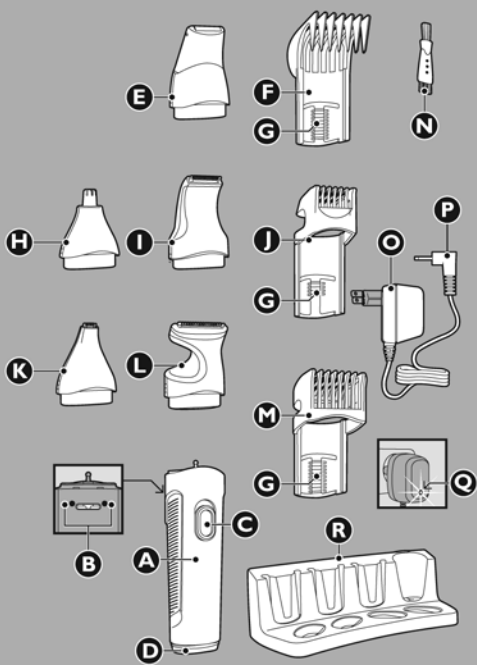
**IMPORTANT: The power plug contains a transformer. Do not cut off the power plug to replace it with another plug as this will cause a hazardous condition.**

## Registration

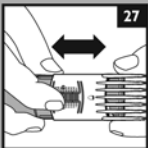
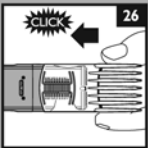
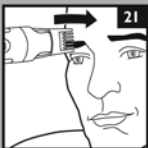
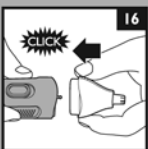
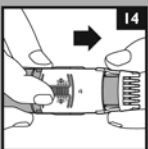
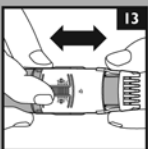
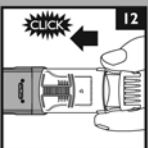
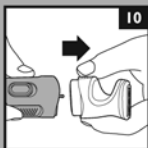
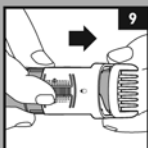
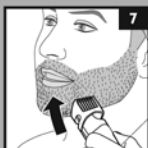
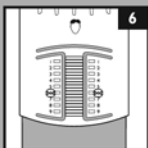
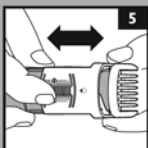
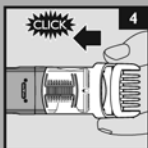
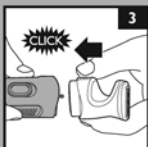
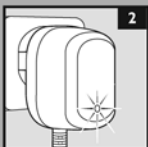
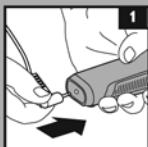
Congratulations on your purchase and welcome to Philips Norelco!

To fully benefit from the support that Philips Norelco offers, register your product at [www.philips.com/norelco](http://www.philips.com/norelco)

## Features



- A Handle
  - B Setting Indicator
  - C On/Off Switch
  - D Socket for Appliance Plug
  - E Mini Shaver
  - F Hair Clipping Comb
  - G Hair Length Selector
  - H Nose/Ear Hair Trimmer
  - I Precision Trimmer
  - J Precision Comb
  - K Fine Detailing Blade
  - L Full Size Trimmer
  - M Beard & Moustache Comb
  - N Cleaning Brush
  - O Adapter
  - P Appliance Plug
  - Q Charging Light
  - R Store & Charge Stand
- Full Two-Year Warranty  
45-Day Money-Back Guarantee



## Put It To The Test

Like many new products, your Philips Norelco All in 1 Grooming Kit may take a little getting used to. If you are using an electric Groomer for the first time, or if you've been using a different brand, take the time to acquaint yourself with your new Grooming Kit.

Your All in 1 Grooming Kit features the unique microblade technology for maximum precision and visibility combined with all the attachments to make trimming facial hairs or hair clipping goof proof.

Throw your scissors away and put your new All in 1 Grooming Kit to the test. We guarantee precise, professional results or Philips Norelco will refund you the full purchase price as long as the request is received within 45 days of purchase.

## To Charge/Recharge

- ▶ Fully charge Groomer before using for the first time or after non-use for a long period of time.
- ▶ Battery performance is best if you recharge only when the battery is (almost) completely empty.
- ▶ Charging or recharging at temperatures below 40°F or higher than 95°F adversely affects lifespan of the battery.
- ▶ Continuously recharging Groomer will reduce lifespan of battery.

**1** Be certain Groomer is OFF.

**2** You may charge the Groomer:

- ▶ In the charging stand by inserting the appliance plug into the socket located in the bottom of the charging stand. Place the Groomer directly on the charging pin in the stand.
- ▶ By inserting the appliance plug directly into the Groomer (fig. 1).

**3** Plug charging plug into any 120VAC outlet. Use only the cord provided.

**4** After a few moments, the Charging Indicator Light on the power plug will light to indicate the Groomer is charging (fig. 2).

- ▶ It will take approximately 10 hours to fully charge the Groomer for a cordless trimming time of up to 35 minutes.

NOTE: After the Groomer is fully charged, the Charging Indicator Light will remain lit.

**5** Disconnect the cord and unplug from electrical outlet.

## Optimize the working life of the battery

- ▶ After the Groomer has been charged for the first time, do not recharge the Groomer between trimming sessions. Continue using it until the battery is completely empty.
- ▶ Do not charge for more than 24 hours.
- ▶ Do not keep cord permanently plugged in.
- ▶ Discharge/run down the battery completely twice a year by letting the motor run until it stops.
- ▶ If the Groomer hasn't been used for a long period of time, it must be recharged for a full 10 hours.

## Cordless Trimming

**1** Charge according to directions. Unplug Groomer from outlet.

**2** Slide ON/OFF switch ON to begin trimming.

# Trimming

- ▶ Use this Groomer for its intended household use as described in this manual.
- ▶ Make sure that the Groomer is fully charged before you start trimming. This Groomer will not operate while cord is connected to electrical outlet.
- ▶ Make sure hair is clean and dry.
- ▶ Always comb the hair with a styling comb in the direction of growth before you start trimming.

Do not move the Groomer too fast. Make smooth and gentle movements.

## Trimming your Beard & Moustache with Beard & Moustache Comb Attachment

- 1** Put the full size trimmer attachment on Groomer (fig. 3). You will hear a click.
  - 2** Slide the beard & moustache comb into the guiding grooves on both sides of the Groomer and push until it 'clicks' into place (fig. 4).
  - 3** Press the Hair Length Selector and slide it to the desired trimming length setting (fig. 5). The selected setting number will appear on the back of the Groomer (fig. 6). See Table 1 for settings.
- ▶ If you are trimming for the first time, start by using the comb at the maximum trimming length setting (#9) to prevent accidentally trimming hairs too short. As you become familiar with the settings, adjust Hair Length Selector to desired trimming length. Selector will “click” into position at each setting.
- 4** Switch the Groomer ON.
  - 5** To trim in the most effective way, move the Groomer against the direction of hair growth. Make sure the surface of the comb always stays in contact with the skin (fig. 7).
- NOTE: Since all hairs do not grow in the same direction, you may want to try different trimming directions (i.e., upwards, downwards, or across). Practice is best for optimum results.
- ▶ If a lot of hair has accumulated in the comb, remove the comb and blow and/or shake the hair out of the comb. You can also use the cleaning brush provided to remove hair from the comb area.

**Table 1. Beard Trimmer**

Setting		Remaining hair length (in.) /(mm)
1	Stubble	.08 in/2mm
2	Closely Cropped	.16 in/4mm
3	Short	.24 in/6mm
4	Medium Short	.31 in/8mm
5	Medium	.39 in/10mm
6	Medium Long	.47 in/12mm
7	Long	.55 in/14mm
8	Extra Long	.63 in/16mm
9	Longest	.71 in/18mm

- ▶ **REMEMBER:** You must reset the hair length selector back to your desired setting every time you replace the comb on the appliance.
- ▶ The remaining hair length corresponds with the smallest distance between the cutting blade and the spot where the comb is in contact with the skin.
- ▶ Setting the comb to #1 position will result in a stubble beard look (fig. 8).

## **Beard Trimming Without Beard & Moustache Comb**

Remove comb if you are:

- ▶ Defining hair lines
- ▶ Trimming nape of neck
- ▶ Removing single, unwanted hairs

- 1** Be certain the Groomer is in the OFF position.
- 2** Remove the comb attachment by pressing and sliding the Hair Length Selector upwards (fig. 9).

Never pull off the comb attachment by grasping the flexible top portion. Always pull off by the bottom part of attachment.

- 3** Switch the Groomer ON.
- 4** Make well-controlled movements. Touch the hair/skin lightly with the Groomer.

## **Defining Beard, Moustache and Sideburns With Precision Trimmer Comb**

- 1** Be certain the Groomer is in the OFF position.
- 2** Remove the comb attachment by pressing and sliding the Hair Length Selector upwards (fig. 9).
- 3** Remove the full size trimmer by pulling it off the handle (fig. 10).
- 4** Put the precision trimmer attachment on the Groomer (fig. 11). You will hear a click.
- 5** Slide the precision comb into the guiding grooves on both sides of the Groomer and push until it 'clicks' into place (fig. 12).
- 6** Press the Hair Length Selector and slide it to the desired trimming length setting (fig. 13). The selected setting number will appear on the back of the Groomer (fig. 6). See Table 2 for settings.

- ▶ If you are trimming for the first time, start by using the comb at the maximum trimming length setting (#4) to prevent accidentally trimming hairs too short.
- ▶ Hold the Groomer upright when you use the precision trimmer attachment.
- ▶ **REMEMBER:** You must reset the hair length selector back to your desired setting every time you replace the comb on the appliance.

**Table 2. Precision Trimmer**

Setting		Remaining hair length (in.)/(mm)
1	Stubble	.08 in/2mm
2	Closely Cropped	.16 in/4mm
3	Short	.24 in/6mm
4	Medium Short	.31 in/8mm

## **Defining Beard, Moustache and Sideburns Without Precision Trimmer Comb**

Remove comb if you are:

- ▶ Shaping moustache and sideburns
- ▶ Defining contours
- ▶ Removing single, unwanted hairs

- 1** Be certain the Groomer is in the OFF position.
- 2** Remove precision comb attachment by pressing and sliding Hair Length Selector upwards (fig. 14).
- 3** Switch the Groomer ON.
- 4** Hold the Groomer upright and trim the desired areas (fig. 15).

## **Using Nose/Ear Hair Trimmer**

- 1** Be certain the Groomer is in the OFF position.
- 2** Remove the full size trimmer attachment by pulling it off the handle (fig. 10).
- 3** Put the nose/ear hair trimmer attachment on the Groomer (fig. 16). You will hear a click.



## Trimming Eyebrows With Precision Trimmer Comb

Use the precision trimmer with the precision comb to trim entire eyebrow to a uniform length.

- 1** Be certain Groomer is in the OFF position.
- 2** Remove the full size trimmer by pulling it off the handle (fig. 10).
- 3** Put the precision trimmer attachment on the Groomer (fig. 11). You will hear a click.
- 4** Slide the precision comb into the guiding grooves on both sides of the Groomer and push until it “clicks” into place (fig. 12).
- 5** Press the hair length selector and slide it to the desired trimming length setting (fig. 13). The selected setting number will appear on the back of the Groomer (fig. 6). See Table 2 for settings.
- 6** Comb the eyebrow in the direction of hair growth (fig. 20).
  - ▶ If you are trimming for the first time, start by using the comb at the maximum trimming length setting (#4) to prevent accidentally trimming hairs too short.
- 7** Move the precision trimmer comb over the eyebrow from the outer tip of the eyebrow towards the base of the nose (fig. 21).
- 8** Turn off Groomer. Rinse attachment clean after each use.

## Contouring Eyebrows With Fine Detailing Blade

Use the fine detailing blade on eyebrows without a comb attachment if you are:

- ▶ Shaping eyebrows
- ▶ Defining eyebrow contours
- ▶ Removing single, unwanted hairs

- 1** Be certain Groomer is in the OFF position.
- 2** Put the fine detailing blade attachment on the Groomer (fig. 22).
- 3** Switch the Groomer ON.
- 4** For contouring eyebrows, stretch the skin of the eyelid (fig. 23).
- 5** Make well-controlled movements making sure the fine detailing blade is in full contact with the skin. Always move the fine detailing blade against the direction of hair growth.

IMPORTANT: Do not try to trim your eyelashes. Be careful not to get too close to your eyelashes and eyes!

- 6** Turn off Groomer. Rinse attachment clean after each use.

## Shaving With Mini Shaver Attachment

Use the narrow mini shaver to shave along contoured edges to remove any stubble while creating a smooth, well-defined beard line.

- ▶ Before using the mini shaver, always check it for wear and damage. If the mini shaver shows signs of wear or damage, do not use it as injury may occur. Do not use the mini shaver until it has been replaced.

- 1** Pre-trim the contours desired with the full size trimmer or precision trimmer without a comb attachment.
- 2** Put the mini shaver attachment on the Groomer (fig. 24).
- 3** Gently press the mini shaver onto the skin and shave along contoured edges to remove any stubble. Do not press too hard.

## Hair Clipping

- ▶ Make sure that the appliance is fully charged before you start clipping hair. The appliance will not operate while cord is connected to electrical outlet.
- ▶ Before you start clipping, make sure that the head of the person whose hair you are cutting is at the same level as your chest so that all parts of his/her head are clearly visible and within easy reach.
- ▶ Only use the appliance on dry hair.
- ▶ Do not use on freshly washed hair.
- ▶ Before you begin, comb the hair in the direction of growth (fig. 25).
- ▶ To achieve optimal clipping results, always move the appliance slowly through the hair against the direction of hair growth.

## Clipping with hair comb attachment

- 1** Put the full size trimmer attachment on Groomer (fig. 3).
- 2** Slide the hair clipper comb into the guiding grooves on both sides of Groomer and push until you hear it 'click' into place (fig. 26).
- 3** Press the Hair Length Selector and slide it to the desired setting (fig. 27). See Table 3 for settings.
- 4** The setting selected will appear on the back of the Groomer (fig. 6).

When you are clipping for the first time, start at the maximum clipping length setting (#9) to familiarize yourself with the appliance and prevent accidentally trimming hairs too short. As you become familiar with the settings, adjust the Hair Length Selector to desired trimming length. Selector will 'click' into position at each setting.

### Table 3. Hair Clipper

Setting	Remaining hair length (in)/(mm)
1 Closely Cropped	.16 in./4mm
2 Short	.24 in./6mm
3 Medium Short	.31 in./8mm
4 Medium	.39 in./10mm
5 Medium Long	.47 in./12mm
6 Long	.55 in./14mm
7 Longer	.63 in./16mm
8 Extra Long	.71 in./18mm
9 Longest	.79 in./20mm

- 5** Make sure that the flat part of the comb is always in full contact with the scalp to obtain an even result.
- 6** Move the appliance slowly over the crown from different directions to achieve an even result (fig. 28).
- 7** Always move the appliance against the direction of hair growth.
- 8** Make overlapping passes over the head to ensure that all hair that should be cut has been cut.
- 9** Turn the Groomer off and remove the hair comb often to blow and/or shake out hair that has accumulated.

► **REMEMBER:** You must reset the hair length selector back to your desired setting every time you replace the hair clipping comb on the appliance.

## **Contouring without the hair clipping comb attachment**

---

- 1** Remove the hair comb by pressing and sliding the Hair Length Selector upwards (fig. 29).

Be careful when you are clipping without comb attachment as when the appliance is turned on it will trim every hair it touches.

- 2** Tilt the appliance in such a way that only one edge of the trimming attachment touches the hair ends when you shape the contours around the ears (fig. 30).
- 3** To contour the nape of the neck, hairline, or sideburns, turn the appliance and hold it with the trimming attachment pointing downwards (fig. 31).
- 4** Move the groomer slowly and smoothly following the natural hairline.

## **Cutting Shapes with Fine Detailing Blade**

---

- ▶ Use the fine detailing blade to cut shapes in scalp hair.
  - ▶ Be careful when using the fine detailing blade as it removes every hair it touches.
- 1** Put the fine detailing blade attachment on the Groomer (fig. 22).
  - 2** Make careful and controlled movements with the fine detailing blade.
  - 3** For best results, move the fine detailing blade against the direction of hair growth making sure it is in full contact with the skin.

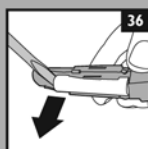
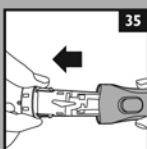
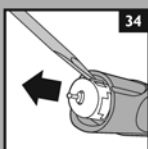
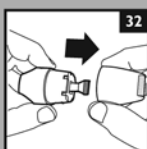
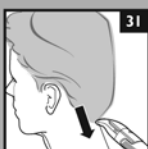
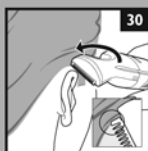
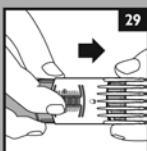
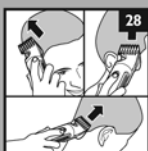
## **Cleaning**

- ▶ Clean the attachments after each use.
- ▶ Always switch Groomer OFF, unplug and remove power supply cord from Groomer/charging stand before cleaning.
- ▶ Do not use compressed air, abrasive cleaning agents, scourers or liquids such as alcohol, benzene, bleach or acetone to clean the Groomer and attachments.
- ▶ Never clean, replace or remove Groomer attachments with motor ON.
- ▶ Do not apply pressure to cutters.
- ▶ Do not touch cutters with hard objects as this may damage them.
- ▶ Use a soft, dry cloth to clean Groomer handle.

## **During Use:**

---

- ▶ If cut hairs have accumulated in the comb area, remove hairs by shaking, blowing or using cleaning brush provided. Remember to adjust the trimming length back to your selected setting when you replace the comb on Groomer.



## After Each Use:

- 1** Make sure the Groomer is switched OFF and disconnected from the electrical outlet.
- 2** Remove any attachment.
- 3** Also separate the top part of the mini shaver attachment from its body (fig. 32).
- 4** Blow and/or shake out any hair that may have accumulated in the attachment.
  - ▶ The shaving foil is very delicate and should not be handled.
  - ▶ If foil becomes damaged, do not continue using the appliance. Do not apply pressure to shaving foil.
  - ▶ Do not clean the foil with the brush, as this may cause damage.
- 5** Rinse attachments thoroughly under warm tap water.
- 6** Shake excess water from attachment and allow to dry thoroughly.  
Do not use a towel to dry the mini shaver as damage to the shaving foil could occur.
- 7** Place the attachment back on the Groomer or place it in the stand.

This Groomer has no other user-serviceable parts.  
For assistance call 1-800-243-3050.

## Storage

- ▶ Be sure Groomer is turned OFF. Remove cord from outlet and Groomer/charging stand before storing in a safe, dry location where it will not be crushed, banged, or subject to damage.
- ▶ Store the Groomer and attachments in the stand to prevent damage.
- ▶ Do not wrap cord around Groomer or stand when storing.
- ▶ Store cord in a safe location where it will not be cut or damaged.
- ▶ Do not place or store charging stand where it can fall or be pulled into a tub or sink, water or other liquid while plugged in.

## Assistance

For assistance, call toll free:

**1-800-243-3050**

**or visit our website:**

**[www.philips.com/norelco](http://www.philips.com/norelco)**

Information is available 24 hours a day,  
 7 days a week.

## Battery Removal

- ▶ This Philips Norelco Groomer contains a rechargeable Nickel-Cadmium battery, which must be disposed of properly (fig. 33).
  - ▶ Battery should only be removed when Groomer is to be discarded.
  - ▶ For assistance, call toll free: 1-800-243-3050 or visit our website: [www.philips.com/norelco](http://www.philips.com/norelco).
- 
- 1** Unplug electrical cord from outlet and Groomer before dismantling Groomer.
  - 2** Allow the Groomer to run until the batteries are completely empty/depleted. Turn Groomer off.
  - 3** Remove any comb and/or attachment from Groomer.
  - 4** Remove the top part of Groomer with a screwdriver (fig. 34).
  - 5** Pull the inner part out of the Groomer (fig. 35).
  - 6** Pry open the inner part and pull out the battery (fig. 36).
  - 7** Cut the wires close to the battery with a pair of scissors.
  - 8** Do not attempt to replace battery. Insulate battery ends by covering with tape and or place battery in a small plastic bag. Discard Groomer.
  - 9** Contact your local town or city officials for battery disposal information or call 1-800-8-BATTERY or [www.rbrc.com](http://www.rbrc.com) for drop-off locations.

## Full Two-Year Warranty

Philips Electronics North America Corporation warrants each new Philips Norelco product, Model G485, G480 against defects in materials or workmanship for a period of two years (cutters for up to four years) from the date of purchase, and agrees to repair or replace any defective product without charge.

**IMPORTANT:** This warranty does not cover damage resulting from accident, misuse or abuse, lack of reasonable care, the affixing of any attachment not provided with the product or loss of parts or subjecting the product to any but the specific voltage.\* Use of unauthorized replacement parts will void this warranty.

**PHILIPS ELECTRONICS NORTH AMERICA CORPORATION WILL NOT PAY FOR WARRANTY SERVICE PERFORMED BY A NON-AUTHORIZED REPAIR SERVICE AND WILL NOT REIMBURSE THE CONSUMER FOR DAMAGE RESULTING FROM WARRANTY SERVICE PERFORMED BY A NON-AUTHORIZED REPAIR SERVICE.**

**NO RESPONSIBILITY IS ASSUMED FOR ANY SPECIAL, INCIDENTAL OR CONSEQUENTIAL DAMAGES.**

In order to obtain warranty service, simply go to [www.philips.com/norelco](http://www.philips.com/norelco) or call 1-800-243-3050 for assistance. It is suggested that for your protection you return shipments of product by insured mail, insurance prepaid. Damage occurring during shipment is not covered by this warranty. **NOTE:** No other warranty, written or oral, is authorized by Philips Electronics North America Corporation. This warranty gives you specific legal rights, and you may also have other rights which vary from state to state. Some states do not allow the exclusion or limitation of incidental or consequential damages, so the above exclusion and limitations may not apply to you.

\*Read enclosed instructions carefully.

Manufactured for:

Philips Consumer Lifestyle

A Division of Philips Electronics North America Corporation  
1600 Summer Street – 5th Floor, Stamford, CT 06905-5125



This symbol on the product's nameplate means it is listed by Underwriters' Laboratories, Inc.

Norelco is a Registered Trademark of Philips Electronics North America Corporation.

PHILIPS is a Registered Trademark of Koninklijke Philips Electronics N.V.

© 2008 Philips Electronics North America Corporation. All Rights Reserved.

# PHILIPS

# NORELCO

## 45-DAY MONEY-BACK GUARANTEE

If you are not fully satisfied with your Philips Norelco Groomer, send the product back and we'll refund you the full purchase price.

***The Groomer must be shipped prepaid by insured mail, insurance prepaid, and have the original sales receipt, indicating purchase price and the date of purchase, enclosed. We cannot be responsible for lost mail. The Groomer must be postmarked no later than 45 days after the date of purchase. Philips Norelco reserves the right to verify the purchase price of the product and limit refunds not to exceed suggested retail price.***

To obtain money-back guarantee return authorization form, call 1-800-243-3050.