

PHILIPS

NORELCO

Bodygroom
System

BG2040
Rechargeable
Cordless



Register your product and get support at
www.philips.com/norelco

IMPORTANT SAFEGUARDS

When using an electric appliance, basic precautions should always be followed, including the following:

Read all instructions before using this appliance.

DANGER

To reduce the risk of electric shock:

1. Do not reach for a charging stand while plugged in that has fallen into water. Unplug immediately.
2. Charging stand is not for immersion or for use while bathing or in a shower.
3. Do not use an extension cord with this appliance.
4. Do not place or store charging stand where it can fall or be pulled into a tub or sink. Do not place or drop a charging stand into water or other liquid while plugged in.
5. Always unplug the charging stand from the electrical outlet immediately after use, except when groomer is (re)charging.
6. Remove power supply cord from charging stand before cleaning.
7. When discarding groomer, unplug charging stand and remove groomer from charging stand before removing rechargeable batteries. See Battery Removal instructions.

WARNING

To reduce the risk of burns, fire, electric shock or injury to persons:

1. Close supervision is necessary when this groomer/charging stand is used by, on, or near children or invalids.
2. Use this groomer/charging stand for its intended household use as described in this manual. Do not use attachments not recommended by Philips Electronics North America Corporation.
3. This appliance is only intended for shaving and trimming body parts below the neckline. Do not use it to shave or trim facial or scalp hair.
4. Never operate this groomer/charging stand if it has a damaged cord or charging plug, if it is not working properly, if it has been dropped or damaged, or dropped into water. For assistance call 1-800-243-3050.
5. Keep the groomer, charging stand, cord and charging plug away from heated surfaces.
6. Never drop or insert any object into any opening.
7. Never operate the groomer with the air openings blocked or while on a soft surface, such as a bed or couch, where the air openings may be blocked. Keep the air openings free of lint, hair, and the like.
8. Do not operate, charge or plug in groomer outdoors or where aerosol (spray) products are being used or where oxygen is being administered.
9. Always check foil, cutters, and trimmers before using the groomer. Do not use the groomer if foil, cutters or trimmers are damaged, as injury may occur.
10. Always attach plug to charging stand first, then charging plug into outlet. To disconnect, remove charging plug from outlet.
11. Use only the cord and charging stand provided to charge and (re)charge the groomer.
12. If the appliance is subjected to a major change in temperature, pressure or humidity, let the appliance acclimatize for 30 minutes before using.
13. Never put the groomer/charging stand in direct sunlight or store at a temperature above 140°F.
14. Groomer is water-safe and can be rinsed under running tap water or used in shower. Do not submerge groomer in water.
15. To prevent possible damage to the cord, do not wrap cord around the charging stand. Do not store in a damp environment.

SAVE THESE INSTRUCTIONS

IMPORTANT: The power plug contains a transformer. Do not cut off the power plug to replace it with another plug, as this will cause a hazardous condition.

IMPORTANT: Your groomer contains **NICKEL METAL HYDRIDE RECHARGEABLE BATTERIES**. See **Battery Removal instructions for battery disposal information**.

Registration

Congratulations on your purchase and welcome to Philips Norelco!

To fully benefit from the support that Philips Norelco offers, register your product at www.philips.com/norelco.

Create Your Own Look

Your new Philips Norelco Bodygroom system offers you a safe, gentle and quick way to trim and shave every body part below the neckline. This unique combination allows you to create your own look safely and with less irritation. The trimming unit gives you multiple hair length settings to choose from so you can control the exact hair length you desire or use the shaving unit to completely shave off body hair. Use wet or dry, your Bodygroom system with self-sharpening blades will give you a precise trim and shave anywhere, every time.

Like many new products, your Philips Norelco Bodygroom may take a little getting used to. If you are shaving sensitive areas for the first time, your skin may need time to adapt. Give yourself some time to acquaint yourself with your new Bodygroom.

Stick with it! If you alternate trimming or shaving methods during the adjustment period it may make it more difficult to adapt to the Philips Norelco Bodygroom system. If you are still not convinced, Philips Norelco will refund you the full purchase price as long as the request is received within 45 days of purchase.

Be certain to read the instructions and important information in this booklet to begin using your new Bodygroom system to create your own look.

Features

- A Charging Indicator Light
 - B Shaving Unit
 - C Shaving Unit On/Off Button
 - D Trimming Unit On/Off Button
 - E Hair Length Selector
 - F Trimming Unit with Comb
 - G Charging Stand
 - H Socket for Small Plug
 - I Adaptor
 - J Small Plug
 - K Cleaning Brush
- Full 2-Year Warranty
45-Day Money-Back Guarantee



This symbol indicates that the groomer can be used in the bath or shower.

LED Charging Indicator

- ▶ The Charging Indicator Light on the Groomer will flash green to indicate Groomer is (re)charging.

Before First Use

- ▶ Charge the Groomer before you start using it (see 'Charging'). Make sure the Groomer is switched off before you start charging it.
- ▶ Before using, check foil, cutters and trimmers for wear or damage. If foil, cutters or trimmers show signs of wear or damage, do not use Groomer as injury may occur. Do not use Groomer until foil, cutters or trimmers have been replaced.

Important

- ▶ Only use the adaptor charging plug provided to charge the Groomer.

Charging

- ▶ First time charging requires 10 hours. After initial charge, recharging requires approximately 8 hours.
- ▶ Use only the cord and charging stand provided.
- ▶ Battery performance is best if you recharge only when the batteries are (almost) completely empty.
- ▶ Charging, recharging or storing at temperatures below 40°F or higher than 95°F adversely affects lifetime of batteries.
- ▶ Continuously recharging will reduce life of the batteries.
- ▶ This Groomer will not operate corded directly from the electrical outlet.
- ▶ The Groomer can only be charged in the charging stand.

1 Be certain Groomer is OFF.

2 Connect cord to charging stand (Fig. 1).

NOTE: The small plug is easiest to insert when the charging stand is folded.

3 Unfold the charging stand (Fig. 2).

4 Plug the adaptor into any 120V AC outlet. Use only the cord provided.

▶ An adaptor plug may be necessary for cord usage in some foreign countries. Use an attachment plug adaptor of the proper configuration for power outlet.

5 Put the Groomer in the charging stand with the shaving unit pointing upwards (Fig. 3). Make sure the charging contacts on each side of the Groomer fit into the charging stand correctly. When placed correctly, the charging light will flash green to indicate the Groomer is (re)charging (Fig. 4).

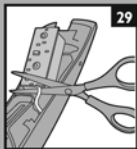
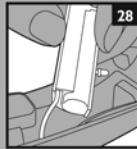
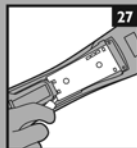
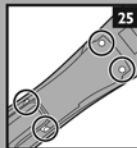
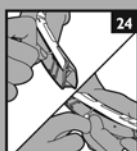
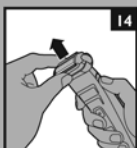
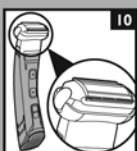
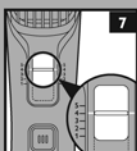
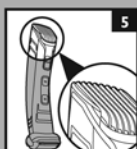
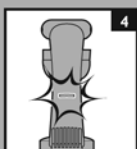
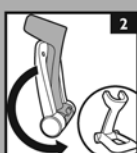
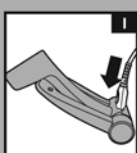
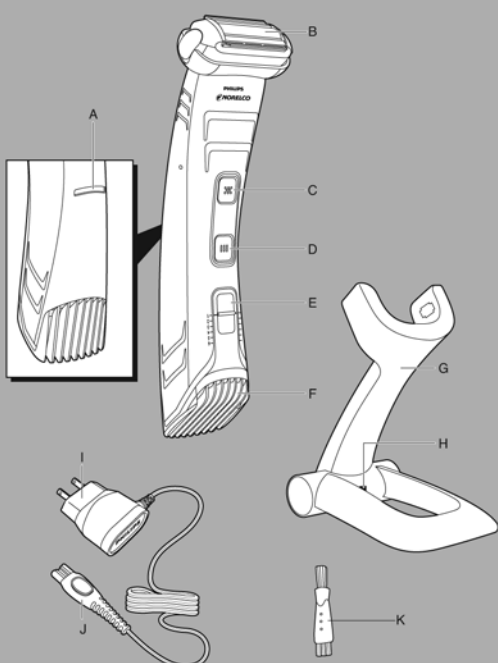
6 Charging requires a full 8 hours. A fully charged Groomer has a cordless grooming time of up to 50 minutes.

7 When the battery is fully charged, the charging light lights up green continuously.

NOTE: After Groomer is fully charged, the charging light will go off after 30 minutes.

8 Disconnect the cord and unplug from the electrical outlet.

Features



Optimize The Working Life of The Battery

- ▶ After Groomer has been charged for the first time, do not recharge Groomer between grooming sessions. Continue using it until the battery is completely empty.
- ▶ Discharge the battery completely twice a year by letting the motor run until it stops.
- ▶ Do not charge for more than 24 hours.
- ▶ Do not keep plug permanently plugged in.
- ▶ If Groomer hasn't been used for a long period of time, Groomer must be recharged for approximately 10 hours.

Recharging

- 1** Recharging requires a full 8 hours.
- 2** Recharge only when the charging light lights up orange. This indicates there is approximately 10 minutes of operating time left.
- 3** When Groomer is fully charged, disconnect the adaptor charging plug from outlet.
- 4** Do not keep the charging stand permanently plugged into outlet.

Trimming

- ▶ If you are trimming for the first time, be careful. Do not move the Groomer too fast. Make smooth and gentle movements.
 - ▶ Practice trimming at the highest setting (5) first to prevent accidentally trimming hairs too short.
 - ▶ Trimming is easier and more effective when skin and hair are dry.
- 1** Hold the Groomer in the trimming position, with the trimming unit pointing upwards and the shaving unit pointing downwards (Fig. 5).

- 2** Press the Hair Length Selector (1) and slide it to the desired setting (2) (Fig. 6).

The two lines next to the setting selector show which setting you have selected (Fig. 7).

Trimming Length Setting Table

- ▶ The trimming combs allow you to cut hair to 5 different lengths:

Hair length setting	Hair length after trimming
1	1/8 in. / 3 mm
2	1/5 in. / 5 mm
3	7/25 in. / 7 mm
4	3/8 in. / 9 mm
5	1 1/25 in. / 11 mm

- 3** Turn Groomer ON by pressing the trimming unit on/off button (Fig. 8).
- 4** Hold Groomer as shown and move against the direction of hair growth making sure the tips of the comb point in the same direction as you are moving the Groomer. Always make smooth and gentle movements and be sure the surface of the comb always stays in contact with your skin (Fig. 9).

NOTE: Since all hairs do not grow in the same direction, you may want to try different trimming positions (i.e. upwards, downwards, or across). Practice is best for optimum results.

- 5** Turn Groomer OFF by pressing the trimming unit on/off button.

Shaving

- ▶ Use this Groomer for its intended household use as described in this manual.
 - ▶ Do not use this Groomer to shave or trim facial or scalp hair. The Groomer should only be used on skin below the neckline.
 - ▶ When shaving sensitive areas for the first time, you may feel some discomfort, irritation or reddening of the skin. This is normal as your skin needs time to adjust to shaving.
 - ▶ If your hair is longer than 2/5 inch /10 millimeters, trim hair using a trimmer comb first for optimum shaving results.
 - ▶ For dry use, be certain that your skin is clean and dry before using the Groomer.
 - ▶ For wet use, you may prepare your skin with lathered soap or shaving foam before using the Groomer.
 - ▶ Make sure the shaving foil is in complete contact with your skin for the closest shave and minimum foil wear.
 - ▶ Pressing too hard may cause skin irritations.
 - ▶ Practice is best for optimum results.
-
- 1** Hold the Groomer in the shaving position, with the shaving unit pointing upwards and the trimming unit pointing downwards (Fig.10).
 - 2** Turn Groomer ON by pressing the shaving unit on/off button (Fig. 11).
 - 3** Stretch your skin taut with your free hand and gently press Groomer to skin (Fig. 12) and move it slowly and smoothly against the direction of hair growth (Fig. 13). DO NOT press too hard. Too much pressure can distort the foil and cause skin irritation.
 - 4** Make sure the shaving head is always in full contact with your skin.
 - 5** Turn Groomer OFF by pressing the shaving unit on/off button (Fig. 11).

Cleaning

- ▶ The Groomer should be cleaned after each use.
- ▶ Always switch Groomer OFF and remove cord from charging stand and charging plug from outlet before cleaning.
- ▶ Do not use compressed air, abrasive cleaning agents, scourers or liquids such as alcohol, benzene bleach or acetone to clean the appliance.
- ▶ Never clean, remove or replace shaving head assembly while motor is on.
- ▶ Do not apply pressure to shaving head. Do not touch foil with hard objects as this may dent or damage foil or cutters. If damage occurs, replace damaged parts.
- ▶ Do not use Groomer if foil, cutters or trimmers are damaged or broken as injury may occur.
- ▶ Only use the cleaning brush supplied. Any other brush may cause damage.

Cleaning the shaving unit

- 1** Always switch Groomer OFF, remove the charging plug from outlet and remove cord from charging stand before cleaning.
- 2** Remove the shaving foil head by pulling it off the appliance (Fig. 14).
Hold the shaving head by the plastic housing only.
- 3** Rinse the shaving unit under warm running tap water to rinse away debris (Fig. 15).
Do not use the cleaning brush to clean the shaving unit as this may cause damage to the foil or cutters.
- 4** Clean the hair chamber with the cleaning brush. You may also rinse the hair chamber under warm running tap water to remove any residual debris (Fig. 16).
- 5** Do not use a towel or cloth to dry shaving foil or cutters as this may cause damage; allow to air dry thoroughly.
- 6** Reattach the shaving head by snapping it back onto the Groomer (Fig. 17). You will hear a 'click'.
- 7** Rinse the Groomer body under running warm tap water. Wipe dry with a soft clean towel or cloth.

Cleaning the trimming unit

- 1** Always switch Groomer OFF, remove the charging plug from outlet and remove cord from charging stand before cleaning.
- 2** Remove the trimming comb by sliding it off the Groomer.
- 3** Push the middle part of the trimming unit upwards with your thumb until it opens (Fig. 18).
- 4** Remove hairs from the hair chamber with the supplied brush (Fig. 19). You may also rinse the hair chamber under warm running tap water to remove any residual debris.
- 5** Rinse the trimming unit with warm running tap water (Fig. 20).
- 6** After cleaning, close the trimming unit and reattach the trimming comb (Fig. 21). You will hear a 'click'.
- 7** Rinse the Groomer body under running warm tap water. Wipe dry with a soft clean towel or cloth.

Replacing the Shaving Foil Head

- ▶ If the shaving foil and cutters are worn or damaged, do not continue using the Groomer. Replace the shaving foil and cutters immediately.
 - ▶ It is recommended that you replace your shaving foil and cutters once a year.
 - ▶ A worn or damaged shaving foil or cutters should only be replaced with an original Philips Norelco shaving foil, model BG2000, which is available on the Philips Norelco website, www.philips.com/norelco or call 1-800-243-3050 for assistance.
 - ▶ The foil is a precision part. Handle with care.
- 1** Always switch Groomer OFF and remove Groomer from the charging stand before replacing shaving foil.
 - 2** Remove the shaving foil head by pulling it off the appliance (Fig. 14).
 - 3** Place the new shaving foil head on the Groomer by snapping it into place (Fig. 17). You will hear a “click”.

After replacing the shaving foil head, check that the shaving head is firmly attached before using Groomer.

This Groomer has no other user-serviceable parts. For assistance call 1-800-243-3050.

Storage

- ▶ Fold the charging stand for easy travelling or storage (Fig. 22).
- ▶ Be sure Groomer is turned off. Remove cord from outlet and charging stand before storing in a safe, dry location where it will not be crushed, banged, or subject to damage.
- ▶ Do not wrap cord around Groomer/charging stand when storing.
- ▶ Store cord in a safe location where it will not be cut or damaged.
- ▶ Do not place or store Groomer/charging stand where it can fall or be pulled into a tub or sink, water or other liquid while plugged in.

Battery Removal

- ▶ This Philips Norelco Groomer contains Nickel Metal Hydride rechargeable batteries which must be disposed of properly (Fig. 23).
 - ▶ Batteries should only be removed when Groomer is to be discarded.
 - ▶ For assistance, call toll free: 1-800-243-3050 or visit our website, www.philips.com/norelco.
-
- 1** Be certain Groomer is OFF and removed from charging stand before dismantling. Allow the Groomer to run until the batteries are completely empty/depleted. Turn Groomer OFF.
 - 2** Remove the front panel from the appliance with a screwdriver (Fig. 24).
 - 3** Undo the four screws of the cover under the front panel with a screwdriver (Fig. 25).
 - 4** Use a screwdriver to pry open the cover and remove it (Fig. 26).
You will see a printed-circuit board which is attached to the battery (Fig. 27).
 - 5** Lift the printed-circuit board with the rechargeable battery out of the appliance (Fig. 28).
 - 6** Cut the wires to separate the printed-circuit board and the rechargeable battery from the appliance (Fig. 29).
 - 7** Do not attempt to replace batteries. Insulate battery ends by covering with tape and/or place battery in a small plastic bag.
 - 8** Discard Groomer. Do not attempt to plug electrical cord into the outlet or recharge Groomer after the batteries have been removed.
 - 9** Contact your local town or city officials for battery disposal information or call 1-800-8-BATTERY or www.rbrb.com for drop-off locations.

Assistance

For assistance, call toll free:

1-800-243-3050

or visit our website:

www.philips.com/norelco

Information is available 24 hours a day, 7 days a week.

Accessories

- ▶ For maximum Groomer performance replace shaving foil head once a year.
- ▶ Replacement Shaving Foil Head
Model BG2000—Philips Norelco Replacement Shaving Foil Head
- ▶ Replacement Parts may be purchased on our website www.philips.com/store

PHILIPS**NORELCO****45-DAY MONEY-
BACK GUARANTEE**

If you are not fully satisfied with your Philips Norelco Product, send the product back along with dated sales receipt and we'll refund you the full purchase price.

The product must be shipped prepaid by insured mail, insurance prepaid, and have the original sales receipt, indicating purchase price and the date of purchase, enclosed. We cannot be responsible for lost mail. The product must be postmarked no later than 45 days after the date of purchase. Philips Norelco reserves the right to verify the purchase price of the product and limit refunds not to exceed suggested retail price.

To obtain money-back guarantee return authorization form, call 1-800-243-3050 for assistance. Please allow 4-6 weeks for delivery of check.

Full Two-Year Warranty

Philips Electronics North America Corporation warrants each new Philips Norelco Product, Model BG2040 (except foil and cutters) against defects in materials or workmanship for a period of two years from the date of purchase, and agrees to repair or replace any defective product without charge. **IMPORTANT:** This warranty does not cover damage resulting from accident, misuse or abuse, lack of reasonable care, the affixing of any attachment not provided with the product or loss of parts or subjecting the product to any but the specified voltage.* Use of unauthorized replacement parts will void this warranty.

PHILIPS ELECTRONICS NORTH AMERICA CORPORATION WILL NOT PAY FOR WARRANTY SERVICE PERFORMED BY A NON-AUTHORIZED REPAIR SERVICE AND WILL NOT REIMBURSE THE CONSUMER FOR DAMAGE RESULTING FROM WARRANTY SERVICE PERFORMED BY A NON-AUTHORIZED REPAIR SERVICE. NO RESPONSIBILITY IS ASSUMED FOR ANY SPECIAL, INCIDENTAL, OR CONSEQUENTIAL DAMAGES.

In order to obtain warranty service, simply go to www.philips.com/norelco or call 1-800-243-3050 for assistance. It is suggested that for your protection, you return shipments of product by insured mail, insurance prepaid. Damage occurring during shipment is not covered by this warranty.

NOTE: No other warranty, written or oral, is authorized by Philips Electronics North America Corporation. This warranty gives you specific legal rights, and you may also have other rights that vary from state to state. Some states do not allow the exclusion or limitation of incidental or consequential damages, so the above exclusion and limitations may not apply to you.

* Read enclosed instructions carefully.

Manufactured for:
Philips Consumer Lifestyle
A Division of Philips Electronics North America Corporation
1600 Summer Street – 5th Floor
Stamford, CT 06905-5125



This symbol on the product's nameplate means it is listed by Underwriters Laboratories, Inc.

Norelco is a Registered Trademark of Philips Electronics North America Corporation.

Bodygroom is a Trademark of Koninklijke Philips Electronics N.V.

PHILIPS is a Registered Trademark of Koninklijke Philips Electronics N.V.

© 2010 Philips Electronics North America Corporation.
All Rights Reserved.