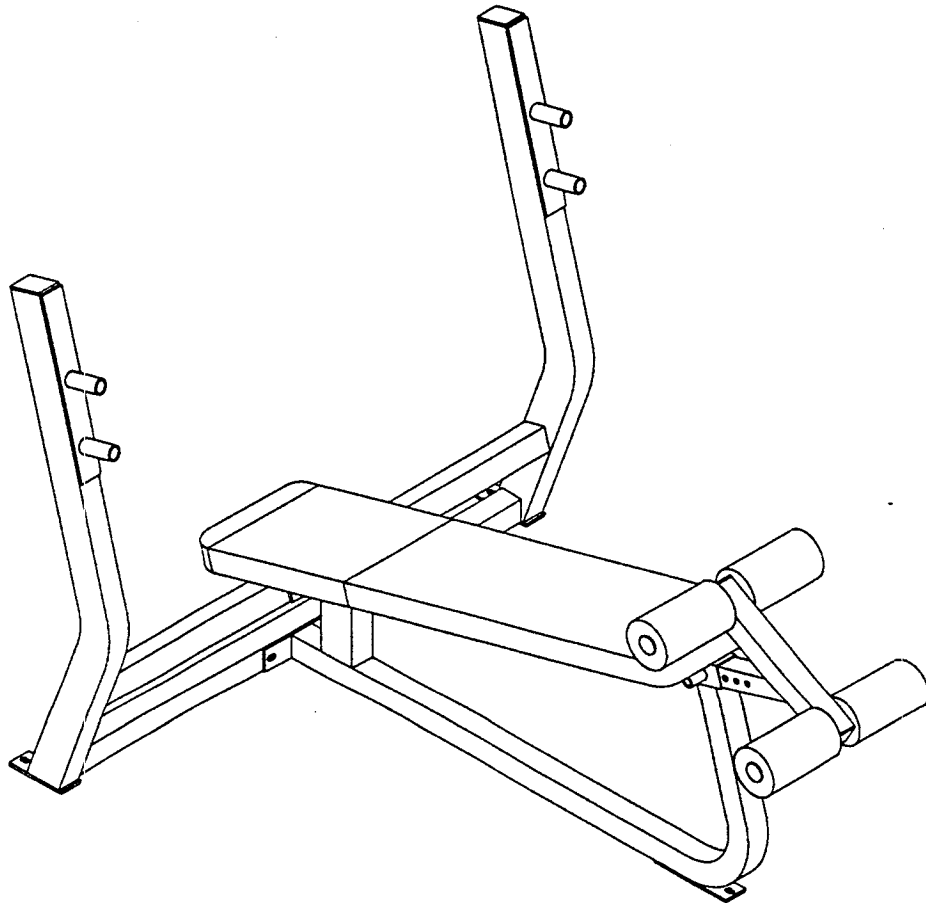


PARABODY

Serious Steel

**915101
DECLINE PRESS BENCH
ASSEMBLY INSTRUCTIONS**



**ParaBody, Incorporated
14150 Sunfish Lake Boulevard
Ramsey, MN 55303
1-800-328-9714**

915101 DECLINE PRESS BENCH ASSEMBLY PARTS LIST

SORT AND COUNT ALL PARTS BEFORE BEGINNING ASSEMBLY

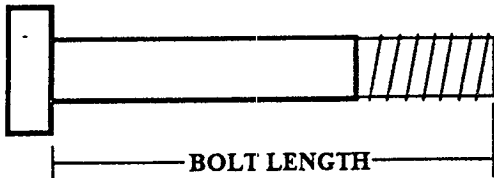
HARDWARE:

ITEM	NAME/DESCRIPTION	QTY
1.	1/2 X 3 IN BOLT	4
2.	3/8 X 2-3/4 IN BOLT	3
3.	1/2 IN WASHER	4
4.	3/8 IN WASHER	3
5.	1/2 IN LOCK NUT	4
6.	SPRING PIN	1
7.	STARLOCK COLLAR	4
8.	2 IN SQ END CAP	2
9.	1-1/2 X 3/4 IN GLIDE (8 PER)	1
10.	PLASTIC WASHER	4

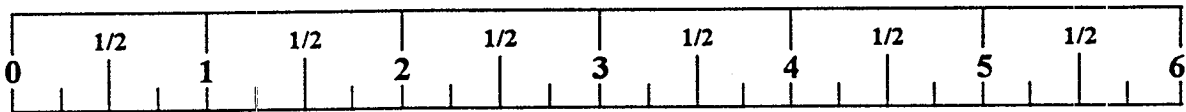
WELDMENTS/PARTS:

ITEM	NAME/DESCRIPTION	QTY
1.	UPRIGHT FRAME WELDMENT(6613603)	1
2.	BENCH FRAME WELDMENT(6613703)	1
3.	LEG SUPPORT WELDMENT(6614102)	1
4.	BACK PAD(66175XX)	1
5.	4 X 7 IN ROLLER PAD(6626101)	4
6.	ROLLER PAD SHAFT(6646501)	2

NOTE: BOLT LENGTH IS MEASURED FROM THE UNDERSIDE OF THE HEAD OF THE BOLT.



BOLT LENGTH RULER:



915101 DECLINE PRESS BENCH ASSEMBLY INSTRUCTIONS

THANK YOU

FOR PURCHASING THE *915101 DECLINE PRESS BENCH*. PLEASE SAVE THESE ASSEMBLY INSTRUCTIONS FOR YOUR PERSONAL REFERENCE, AND ADDITIONAL SERVICE INFORMATION.

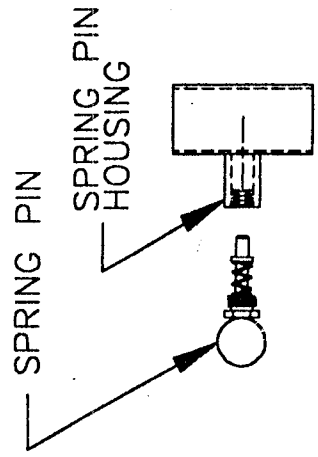
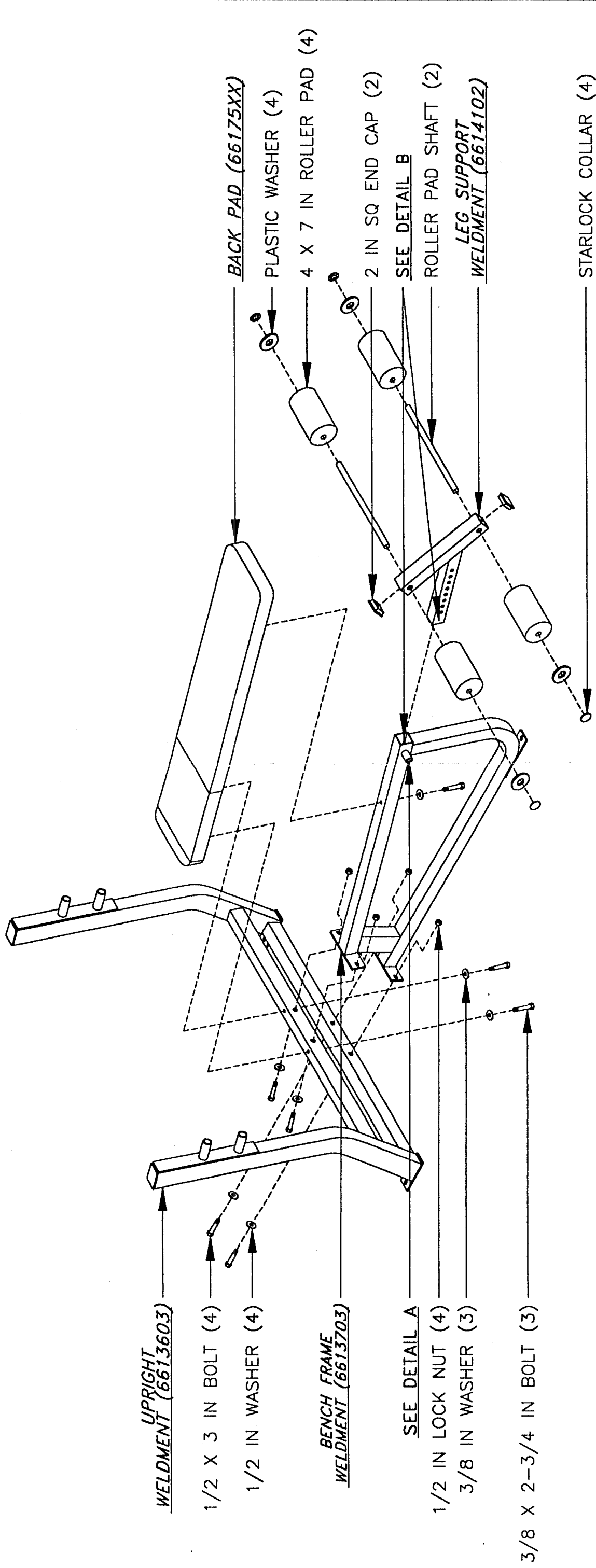
IMPORTANT

- THE *915101 DECLINE PRESS BENCH* MUST BE ASSEMBLED ON A FLAT, LEVEL SURFACE TO ASSURE ITS PROPER FUNCTION.
- PARABODY STRONGLY RECOMMENDS THAT THIS PRODUCT BE ASSEMBLED BY TWO PEOPLE TO AVOID POSSIBLE INJURY.
- IF YOU EXPERIENCE ANY PROBLEM WITH THE ASSEMBLY OF THIS PRODUCT, PLEASE CONTACT YOUR DEALER OR YOUR PARABODY CUSTOMER SERVICE REPRESENTATIVE AT: 1-800-328-9714
- **TOOLS REQUIRED:** RATCHET, 3/4 SOCKET and WRENCH, 9/16 SOCKET and WRENCH, and RUBBER MALLET or HAMMER.

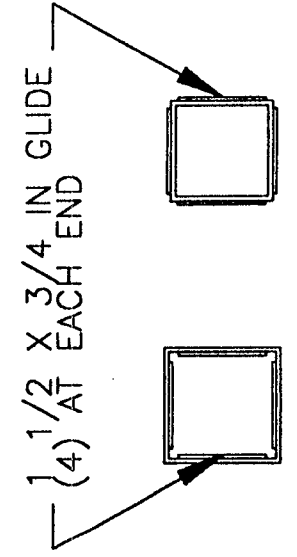
1. SECURELY assemble the **BENCH FRAME WELDMENT** to the **UPRIGHT FRAME WELDMENT** as shown on drawing.
2. SECURELY assemble the **BACK PAD** to the **UPRIGHT FRAME**, and **BENCH FRAME WELDMENTS** as shown on drawing.
3. Attach eight (8) 1-1/2 X 3/4 IN **GLIDES** to the **LEG SUPPORT WELDMENT** and the **BENCH FRAME WELDMENT** as shown in **DETAIL B**.
4. SECURELY assemble the **SPRING PIN** to the **SPRING PIN HOUSING** of the **BENCH FRAME WELDMENT** as shown in **DETAIL A**.
5. Insert two (2) 2 IN **SQ END CAPS**, into the ends of the **LEG SUPPORT WELDMENT** as shown on drawing.
6. SECURELY assemble four (4) 4 X 7 IN **ROLLER PADS** and two (2) **ROLLER PAD SHAFTS** to the **LEG SUPPORT WELDMENT** as shown on drawing.
7. Pull back the **SPRING PIN** on the **BENCH FRAME WELDMENT** and insert the **LEG SUPPORT WELDMENT**. Release the **SPRING PIN** into the desired hole.

CASH NO	01	AS SHOWN
---------	----	----------

REV	DESCRIPTION	CHG NO	APP'D	DATE
A	ADD PLASTIC WASHER	2786	TKB	7/96



DETAIL A



DETAIL B

TOLERANCES (EXCEPT AS NOTED)		TITLE	
DECIMAL		ASSY INST, 915101	
FRACTIONAL		SCALE	DRAWING NO.
ANGULAR		1/16	66264
		SHEET	
		1 OF 1	
DR	MGN	CHK'D	APP'D
		6/96	5/96
PARABODY, INC. RAMSEY, MINNESOTA			