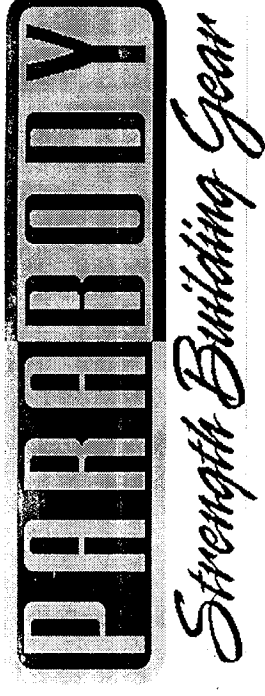


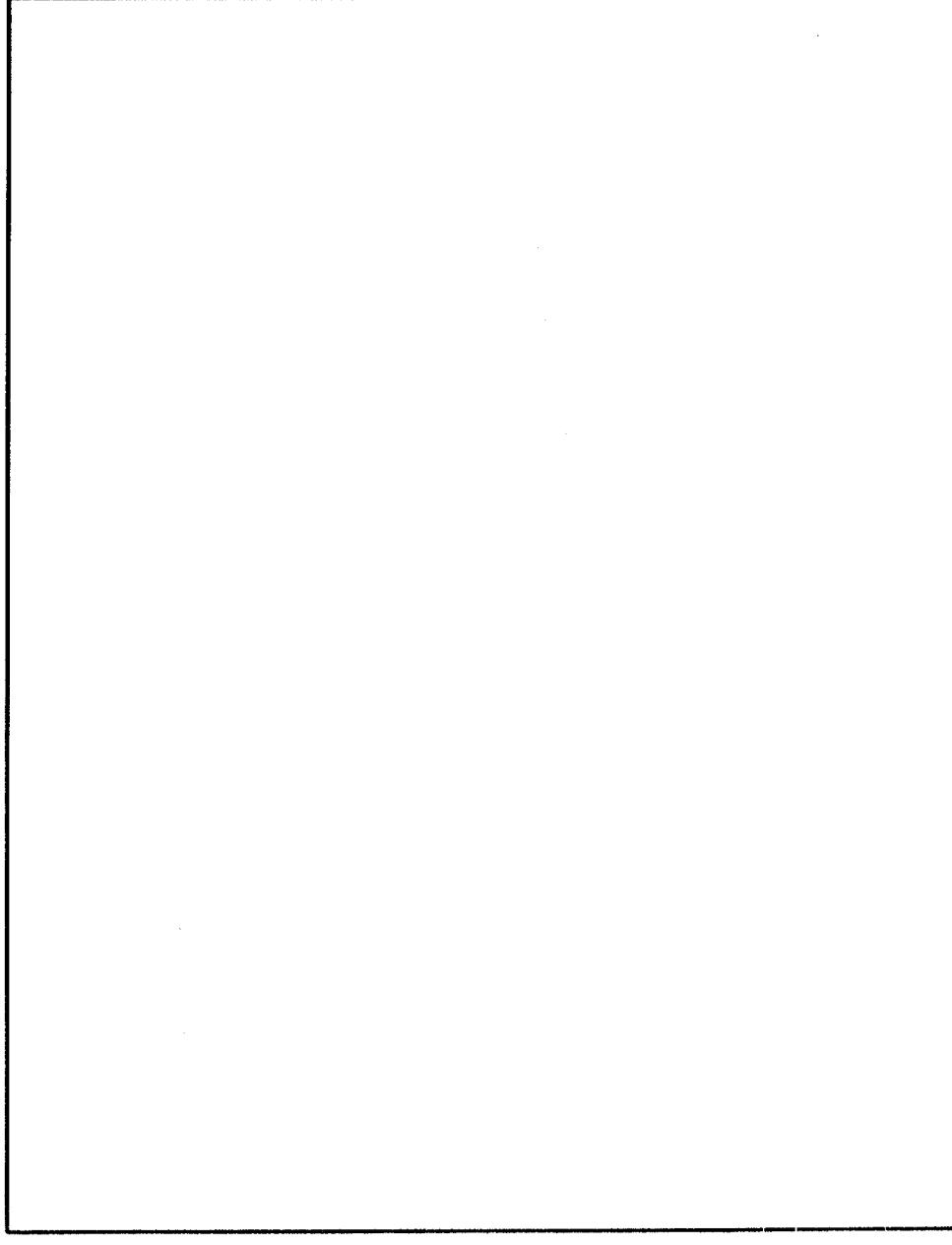
## 872101 45 DEGREE HYPEREXTENSION ASSEMBLY INSTRUCTIONS

9. Insert one (1) 1-3/4 IN. SQ. END CAP into the top end of the TELESCOPE ASSEMBLY as shown on drawing.
10. Attach four (4) PARAGLIDE STRIPS to the bottom end of the TELESCOPE ASSEMBLY, and four (4) PARAGLIDE STRIPS to the inside of the BRACE ASSEMBLY at the top, as shown in (DETAIL B), using the following steps:
  - Thoroughly clean all surfaces where the PARAGLIDE STRIPS are to be attached.
  - Remove paper backing from the PARAGLIDE STRIPS and firmly apply them to all shown surfaces.
11. Pull back the SPRING PIN on the BRACE ASSEMBLY, and insert the TELESCOPE ASSEMBLY, down to the desired adjustment hole. Release the SPRING PIN into the hole. Secure the TELESCOPE ASSEMBLY in place, use one (1) THUMBSCREW as shown on drawing.
12. Slide two (2) 4 X 7 IN. ROLLER PADS onto each end of the ROLLER PAD SHAFT of the TELESCOPE ASSEMBLY as shown on drawing, and hold in place using two (2) 9/16 IN. MUSHROOM CAPS.
13. Slide two (2) 4 X 7 IN. ROLLER PADS over each end of the HANDLE of the TELESCOPE ASSEMBLY as shown on drawing. COAT THE INSIDE OF THE ROLLER PAD WITH WATER. THEN PROCEED TO SLIDE THE ROLLER PADS ONTO HANDLE. (ROTATING THE PAD WHILE PUSHING WILL EASE THE ASSEMBLY)
14. Slide two (2) 1-1/4 X 5 IN. GRIPS over each end of the HANDLE on the TELESCOPE ASSEMBLY.



872101

## 45 DEGREE HYPEREXTENSION



## PRODUCT ASSEMBLY INSTRUCTIONS SHEETS

**872101 45 DEGREE HYPEREXTENSION ASSEMBLY PARTS LIST**

**NOTE: SORT AND COUNT ALL PARTS BEFORE BEGINNING ASSEMBLY**

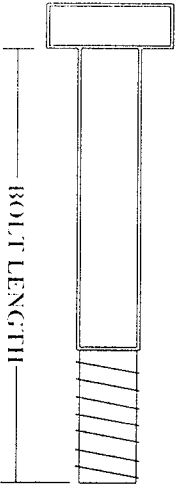
**HARDWARE:**

ITEM	NAME/DESCRIPTION	QTY
1.	3/8 X 3-1/4 IN. BOLT	2
2.	3/8 X 3 IN. BOLT	2
3.	3/8 IN. WASHER	8
4.	3/8 IN. LOCK NUT	4
5.	9/16 IN. MUSHROOM CAP	4
6.	THUMBSCREW	4
7.	SPRING PIN ASSEMBLY	1
8.	2-1/2 IN. DIA. ROUND END CAP	2
9.	2 IN. SQ. END CAP	3
10.	1-3/4 IN. SQ. END CAP	1
11.	1-1/4 X 5 IN. GRIP	2
12.	2-1/2 X 5-1/2 IN. NON SKID STRIP	2
13.	PARAGLIDE STRIP	1

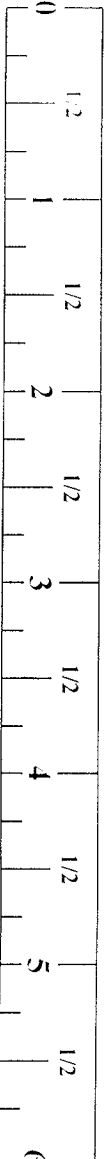
**WELDMENT/PARTS:**

ITEM	NAME/DESCRIPTION	QTY
1.	BASE ASSEMBLY	1 (6350601)
2.	BASE LEG	1 (6259101)
3.	TELESCOPE ASSEMBLY	1 (6350001)
4.	BRACE ASSEMBLY	1 (6350301)
5.	ROLLER PAD SHAFT	1 (6485301)
6.	4 X 7 IN. ROLLER PAD	1 (6194601)

NOTE: BOLT LENGTH IS MEASURED FROM THE UNDERSIDE OF THE HEAD OF THE BOLT.



BOLT LENGTH RULER:



**872101 45 DEGREE HYPEREXTENSION ASSEMBLY INSTRUCTIONS**

**THANK YOU**

FOR PURCHASING THE 872101 45 DEGREE HYPEREXTENSION, PLEASE SAVE THESE ASSEMBLY INSTRUCTIONS FOR YOUR PERSONAL REFERENCE, AND ADDITIONAL SERVICE INFORMATION.

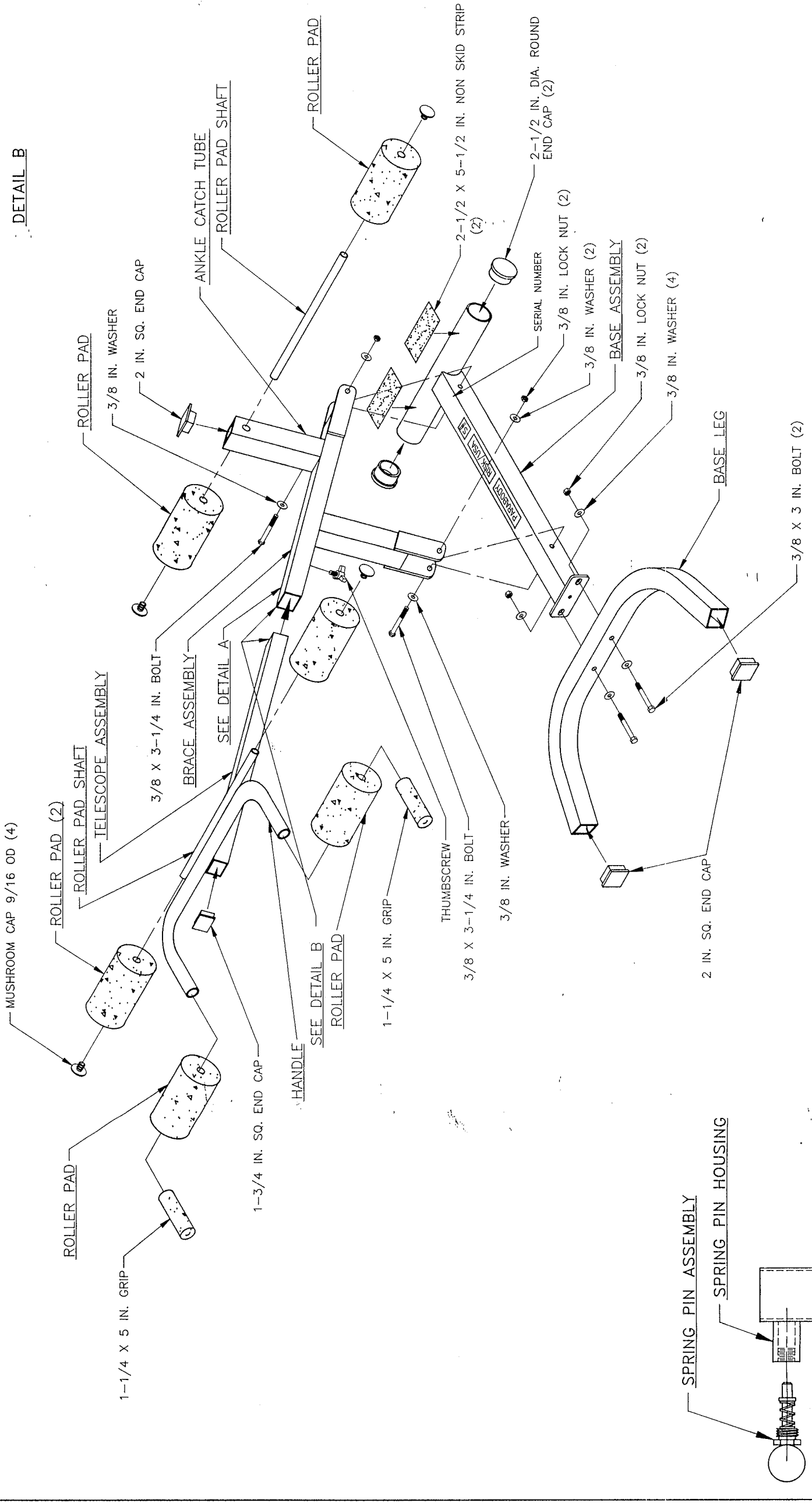
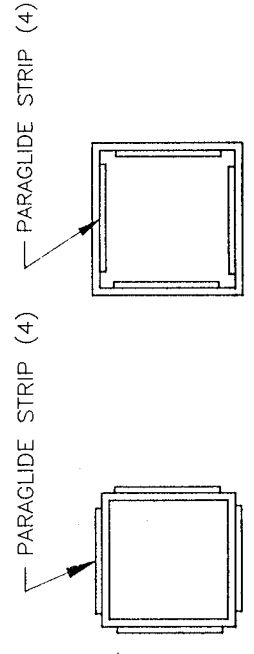
**\*\*\*IMPORTANT\*\*\***

- THE 872101-45 DEGREE HYPEREXTENSION MUST BE ASSEMBLED ON A FLAT, LEVEL SURFACE TO ASSURE ITS PROPER FUNCTION
- PARABODY INC. STRONGLY RECOMMENDS THAT THIS PRODUCT BE ASSEMBLED BY TWO PERSONS TO AVOID POSSIBLE INJURY
- IF YOU EXPERIENCE ANY PROBLEM WITH THE ASSEMBLY OF THIS PRODUCT, PLEASE CONTACT YOUR DEALER OR YOUR PARABODY CUSTOMER SERVICE REPRESENTATIVE AT: 1-800-328-9714
- **TOOLS REQUIRED:** RATCHET, 3/4 SOCKET or WRENCH, 9/16 SOCKET or WRENCH, ADJUSTABLE WRENCH, and RUBBER MALLET or HAMMER

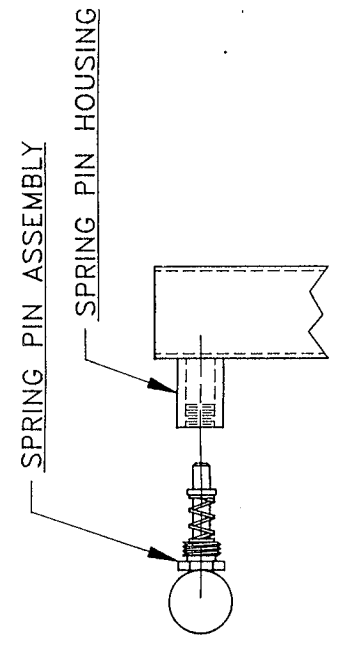
1. Attach two (2) 2-1/2 X 5-1/2 IN. NON SKID STRIPS to the ROUND TUBE on the BASE ASSEMBLY as shown on drawing.
2. Insert two (2) 2-1/2 IN. DIA. ROUND END CAPS into both ends of the ROUND TUBE of the BASE ASSEMBLY.
3. Insert two (2) 2 IN. SQ. END CAPS into both ends of the BASE LEG as shown on drawing.
4. SECURELY assemble the BASE LEG to the BASE ASSEMBLY as shown on drawing, using two (2) 3/8 X 3 IN. BOLTS, four (4) 3/8 IN. WASHERS, and two (2) 3/8 IN. LOCK NUTS.
5. SECURELY assemble the BRACE ASSEMBLY to the BASE ASSEMBLY as shown on drawing, using two (2) 3/8 X 3-1/4 IN. BOLTS, four (4) 3/8 IN. WASHERS, and two (2) 3/8 IN. LOCK NUTS.
6. Insert one (1) 2 IN. SQ. END CAP into the end of the ANKLE CATCH TUBE of the BRACE ASSEMBLY, as shown on drawing.
7. Assemble two (2) 4 X 7 IN. ROLLER PADS to the ANKLE CATCH TUBE of the BRACE ASSEMBLY as shown on drawing, using one (1) ROLLER PAD SHAFT and two (2) 9/16 IN. MUSHROOM CAPS.
8. SECURELY Assemble one (1) SPRING PIN ASSEMBLY to the SPRING PIN HOUSING on the BRACE ASSEMBLY as shown in (DETAIL A).

REV	DESCRIPTION	CHG NO	APPR	DATE
C	REDESIGN	2271	DMT	3/84
D	CHANGED LABELS	2336	DMT	5/84
E	CHG TO MUSHRM CAPS	2566	DMT	2/85

DASH NO 01 AS SHOWN



DETAIL B



DETAIL A

TOLERANCES (EXCEPT AS NOTED)	~	REGIONAL
FRACTIONAL	~	
ANGULAR	~	
TITLE <b>PARABODY INC.</b> RAMSEY, MINNESOTA		
ASSY INST. 45 DEGREE HYPER		
SCALE	1/6	DRAWING NO. 63953
SHEET	1 OF 1	D
DATE	3/84	DMT
DATE	5/84	DMT