



Hydraulic Table Cart MODEL H6240

Introduction

The Model H6240 Hydraulic Table Cart (**Figure 1**) will move and raise material weighing up to 600 lbs. to a maximum comfortable working height of 29¼" above the floor.

The Model H6240 was carefully packed when it left our warehouse. If you discover this hydraulic table cart is damaged after you have signed for delivery, *please immediately call Customer Service at (570) 546-9663 for advice.*

Save the containers and all packing materials for possible inspection by the carrier or its agent. *Otherwise, filing a freight claim can be difficult.*

When you are completely satisfied with the condition of your shipment, you should inventory the contents.

Figure 2 - Inventory.

- A. Cart (Not Shown) 1
- B. Handle 1
- C. Foot Pedal 1
- D. Hex Bolts M8-1.25 x 40 2
- E. Hex Bolts M8-1.25 x 20 1



Figure 1. 600 lb. Capacity hydraulic table cart.

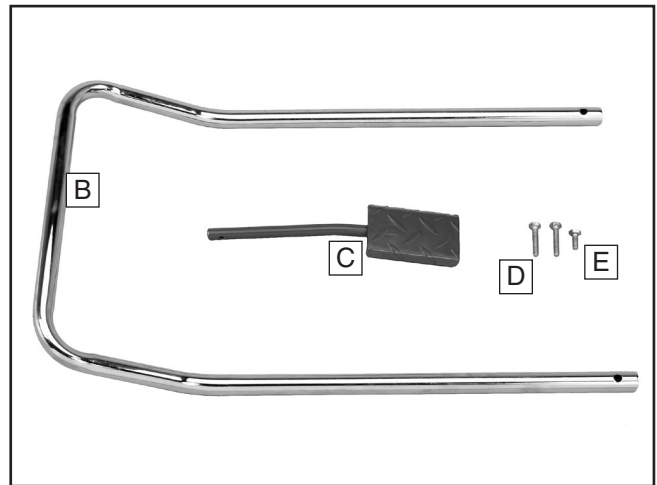


Figure 2. Inventory.

! WARNING

This table cart is not a toy. DO NOT allow children to use this cart. Serious injury may occur if this cart is used incorrectly.

ASSEMBLY

1. Slide the lifting pedal into the pedal shaft, and insert the M8-1.25 x 20 hex bolt through the hole in the side of the pedal shaft and into the lifting pedal (**Figure 3**).
2. Place the handle in the handle sockets and secure with the M8-1.25 x 40 hex bolts (**Figure 3**).

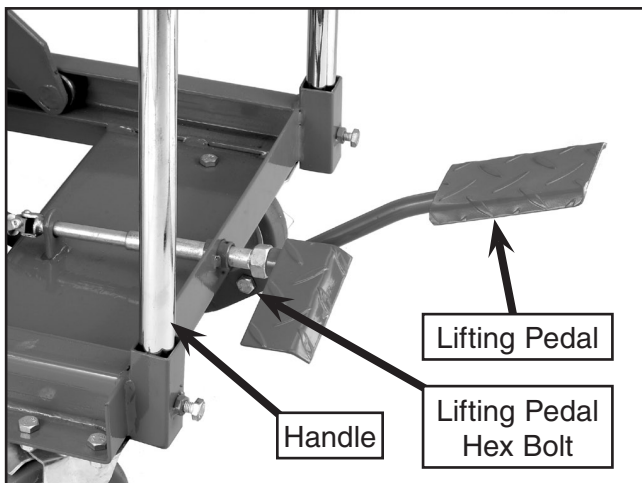


Figure 3. Assembly.

! WARNING

Failure to follow these instructions will result in serious personal injury:

1. Keep hands out of the scissor lift to prevent serious pinching and crushing injuries.
2. DO NOT exceed the 600 lb. load capacity.
3. Lock the rear casters when loading and unloading the cart.
4. Balance the load evenly in the center of the cart.
5. Transport the load in the fully lowered position to prevent tipping.

OPERATIONS

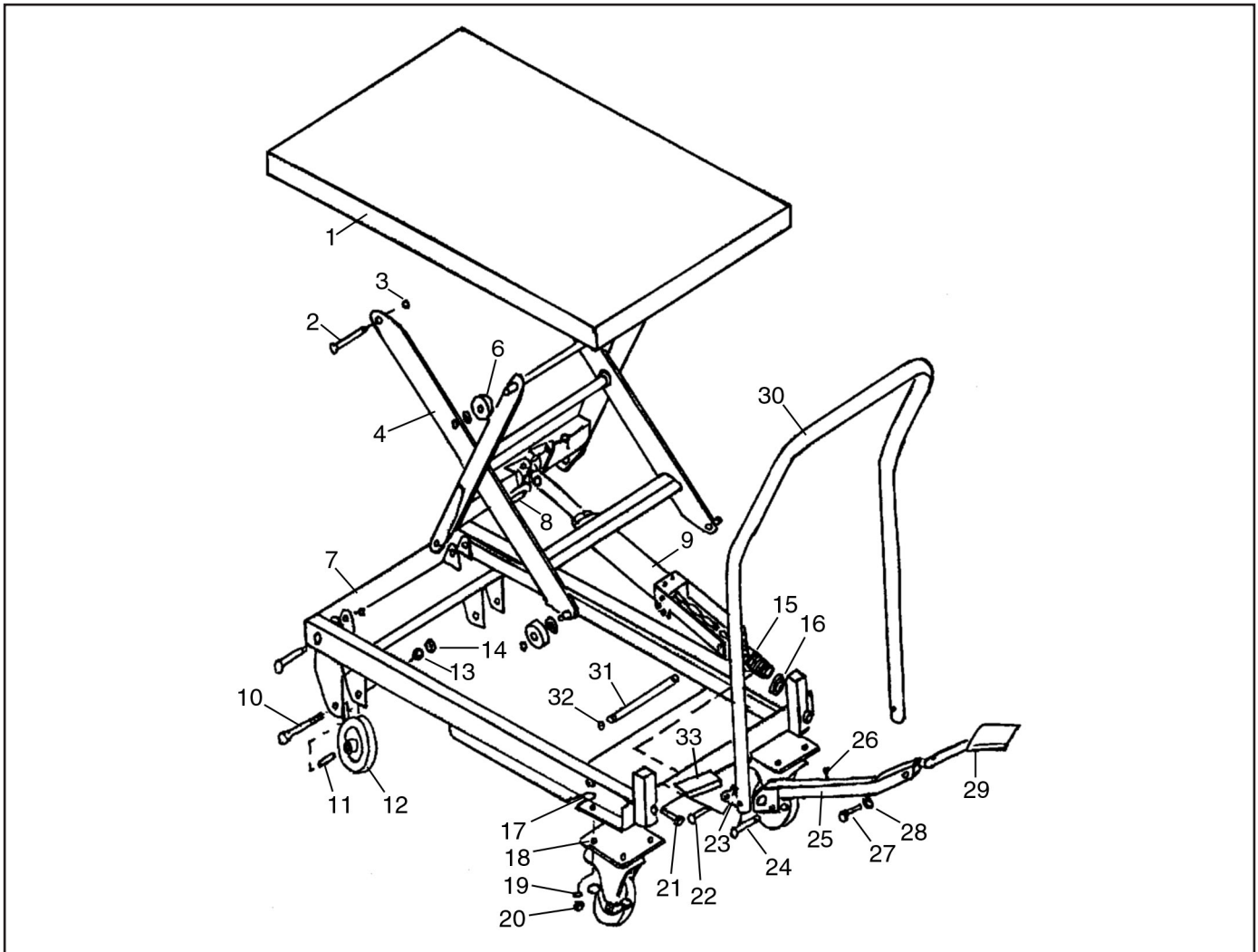


1. Balance the load evenly in the center of the cart.
2. Pump the lifting pedal to raise the table.
3. Push the pressure release pedal to lower the table. Note—*Always lower the table when not in use.*

MAINTENANCE

1. Fully lower the tabletop when not in use.
2. Wipe all dirt and dust off the table cart.
3. Apply light oil to the surface of the hydraulic jack ram.
4. Remove the plug on the top of the hydraulic jack to check the oil level. Add oil if necessary, replace the plug, then pump the handle several times with the pressure release valve open to bleed the air out of the system.

If you need additional help with this procedure, call our service department at: (570) 546-9663.



REF	PART #	DESCRIPTION
1	PH6240001	TABLETOP
2	PH6240002	PIVOT PIN
3	PR06M	EXT RETAIN RING 16MM
4	PH6240004	SCISSOR LIFT
6	PH6240006	WHEEL
7	PH6240007	BASE
8	PH6240008	PIVOT PIN
9	PH6240009	HYDRAULIC JACK
10	PB23M	HEX BOLT M10-1.5 X 100
11	PH6240011	BUSHING
12	PH6240012	FRONT WHEEL
13	PW04M	FLAT WASHER 10MM
14	PN02M	HEX NUT M10-1.5
15	PH6240015	SPRING
16	PH6240016	SPRING CAP
17	PB09M	HEX BOLT M8-1.25 X 20

REF	PART #	DESCRIPTION
18	PH6240018	SWIVEL CASTER
19	PLW04M	LOCK WASHER 8MM
20	PN03M	HEX NUT M8-1.25
21	PB15M	HEX BOLT M8-1.25 X 40
22	PH6240022	PIVOT PIN
23	PH6240023	CONNECTING PLATE
24	PH6240024	PIVOT PIN
25	PH6240025	PEDAL SHAFT
26	PH6240026	COTTER PIN
27	PB26M	HEX BOLT M8-1.25 X 30
28	PW01M	FLAT WASHER 8MM
29	PH6240029	LIFTING PEDAL
30	PH6240030	HANDLE
31	PH6240031	PIVOT PIN
32	PR09M	EXT RETAIN RING 20MM
33	PH6240033	DOWN PEDAL

COPYRIGHT © AUGUST, 2004 BY GRIZZLY INDUSTRIAL, INC.
WARNING: NO PORTION OF THIS MANUAL MAY BE REPRODUCED IN ANY SHAPE OR FORM WITHOUT THE WRITTEN APPROVAL OF GRIZZLY INDUSTRIAL, INC.
 #EW6463 PRINTED IN CHINA