

TIMEX®


Model T308
Preset Tuning Clock Radio with
Auto-Set and nature Sounds




**For additional information, online
registration, and exclusive special
offers please visit our website:**

www.timexaudio.com

	CAUTION RISK OF ELECTRIC SHOCK DO NOT OPEN	
<p>CAUTION: TO REDUCE THE RISK OF ELECTRIC SHOCK, DO NOT REMOVE COVER OR BACK OF UNIT. NO USER-SERVICEABLE PARTS INSIDE. REFER SERVICING TO QUALIFIED SERVICE PERSONNEL.</p> <p>WARNING: TO REDUCE THE RISK OF FIRE OR ELECTRIC SHOCK, DO NOT EXPOSE THIS APPLIANCE TO RAIN OR MOISTURE.</p>		

	<p><i>The lightning flash with arrowhead in an equilateral triangle is intended to alert the user of the presence of uninsulated "dangerous voltage" within the product's enclosure that may be of sufficient magnitude to constitute a risk of electric shock.</i></p>
---	---

	<p><i>The exclamation point within an equilateral triangle is intended to alert the user of the presence of important operating and maintenance (servicing) instructions in the literature accompanying the appliance.</i></p>
---	--

The symbols above are located at the back of the cabinet.

<p>CAUTION: To prevent electric shock, match wide blade of plug to wide slot. Fully insert.</p> <p>ATTENTION: Pour éviter les choc électriques. Introduire la lame la plus large de la fiche dans la borne correspondante de la prises et pousser jusqu'au fond.</p>
--

This device complies with part 15 of the FCC Rules. Operation is subject to the condition that this device does not cause harmful interference.

A Consumer Guide to Product Safety

IMPORTANT SAFETY INSTRUCTIONS

This unit has been designed and manufactured to assure your personal safety. Improper use can result in potential electrical shock or fire hazards. Please read all the safety and operating instructions carefully before installation and use. Keep these instructions handy for future reference. Take special note, adhere to all warning, and always follow the instructions on the unit and in the instruction and service manuals.

1. **Water and Moisture** – The unit should not be used near water. For example: near a bathtub, washbowl, kitchen sink, laundry tub, swimming pool or in a wet basement.
2. **Ventilation** – The unit should be situated so that its location or position does not interfere with its proper ventilation. For example, it should not be situated on a bed, sofa, rug or similar surface that may block ventilation openings. Also, it should not be placed in a built-in installation, such as a bookcase or cabinet that may impede the flow of air through the ventilation openings.
3. **Heat** – The unit should be situated away from heat sources such as radiators, heat registers, stoves or other appliances (including amplifiers) that produce heat.
4. **Power Sources** – The unit should be connected to a power supply only of the type described in the operating instructions or as marked on the appliance itself.
5. **Grounding or Polarization** – This product is equipped with a polarized alternating current line plug. (a plug having one blade wider than the other) As a safety feature this plug will fit into the power outlet only one way. If you are unable to fit the plug fully into the outlet, try reversing the plug. If the plug still fails to fit, contact your electrician to replace your obsolete outlet. Do not defeat the safety purpose of the polarized plug by forcing the plug into the outlet.
6. **Power-cord Protection** – Power supply cords should be routed so that they are not likely to be walked on or pinched by items placed upon or against them. It is always best to have a clear area from where the cord exits the unit to where it is plugged into an AC outlet.
7. **Cleaning** – Unplug this product from the wall outlet before cleaning. Do not use liquid cleaners or aerosol cleaners. Use a damp cloth for cleaning.
8. **Non-Use Periods** – The power cord of the unit should be unplugged from the outlet when it is to be left unused for a long period of time.
9. **Object and Liquid Entry** – Care should be taken so that objects do not fall and liquids are not spilled into an enclosure through openings.
10. **Attachments** – Do not use attachments not recommended by the product manufacturer as they may cause hazards.
11. **Lightning** – For added protection for this product during a lightning storm, or when it is left unattended and unused for long periods of time, unplug it from the wall outlet and disconnect the antenna or cable system. This will prevent damage to the product due to lightning and power-line surges.
12. **Overloading** – Do not overload wall outlets, extension cords, or integral convenience receptacles as this can result in a risk of fire or electric shock.
13. **Damage Require Service** – The unit should be serviced by qualified service personnel when:
 - A. The power supply cord or plug has been damaged.
 - B. Objects have fallen into or liquid has been spilled into the enclosure.
 - C. The unit has been exposed to rain.
 - D. The unit has been dropped or the enclosure damaged.
 - E. The unit does not appear to operate normally or exhibits a marked change in performance.
14. **Servicing** – The user should not attempt to service the unit beyond that described in the user's operating instructions. All other servicing should be referred to qualified service personnel.
15. **Safety Check** – Upon completion of any service or repairs to this product, ask the service technician to perform safety checks to determine that the product is in proper operating condition.
16. **Antenna** – Do not connect to an external antenna.

For questions or comments regarding this or other products, please call our toll-free number 1-800-888-4491.

Installation and Maintenance

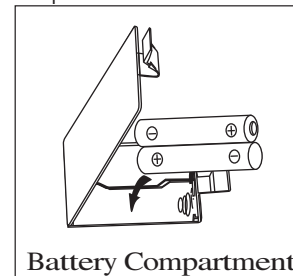
Installation

1. Remove the unit and all packing materials from the carton. You should save packing materials in case unit needs to be returned for service. If you do not wish to save the materials, please dispose of them properly.
2. Place the unit on a stable, level surface, close to an AC outlet, out of direct sunlight, and away from sources of dust, dirt, heat, water, moisture, vibration, and strong magnetic fields.
3. After installing the batteries (see below) and reading the Maintenance notes, plug the AC cord into an outlet.

“Sure Alarm” Battery Backup Installation

It is strongly recommended that 2 “AAA” alkaline batteries be installed into the unit, as directed below, to activate the “Sure Alarm” battery backup feature. In the event that the AC power cord is disconnected or a power failure or other interruption occurs, the “Sure Alarm” system will maintain the clock and alarm settings for the life of the batteries, ensuring that the alarm will sound at the set time (note: while operating on battery power, all set alarms will sound as a buzzer). When power has been restored, the clock will cease using the battery power, and will once again operate on AC power.

1. Gently turn the unit over and remove the battery compartment door.
2. Install 2 "AAA" batteries (alkaline batteries are recommended for longer life) into the battery compartment, making sure that the + and – ends match the diagram printed inside the compartment.
3. Close the battery compartment door, making sure the door locks into place, and gently return the unit to its upright position.

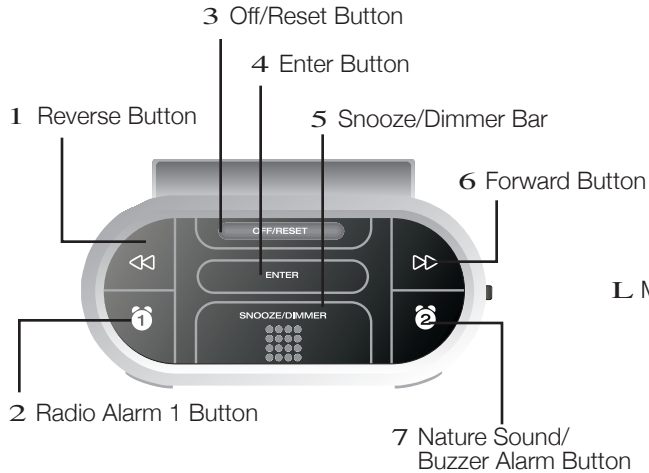


Maintenance

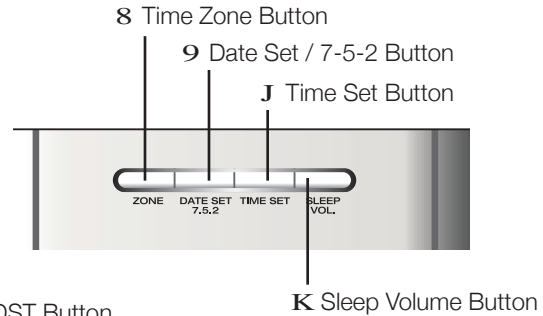
1. Place the unit on a level surface away from direct sunlight or sources of excessive heat.
2. Protect your furniture when placing the unit on natural wood or wood with a lacquered finish. A cloth or other protective material should be placed between the unit and the furniture.
3. Clean the casing with a soft cloth moistened only with mild soap and water. Stronger cleaning agents, such as thinner or similar agents, are not recommended, as they may damage the surface of the case.
4. If the unit is not to be used for a prolonged period, such as a month or longer, remove the batteries to prevent possible corrosion. Should the battery compartment become corroded or dirty, clean the compartment thoroughly and replace the batteries.

Controls and Indicators

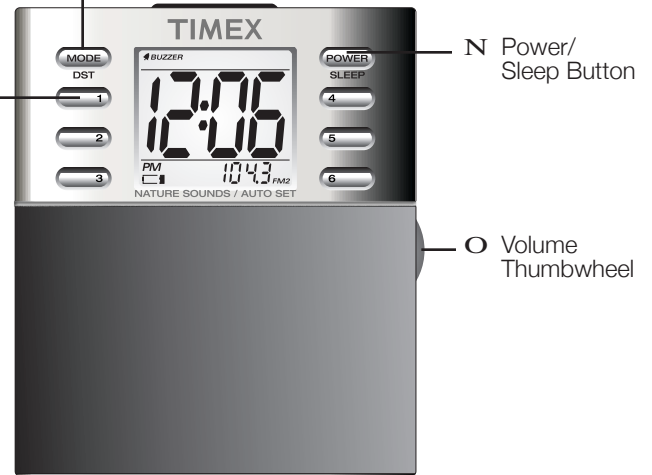
TOP VIEW



BACK VIEW

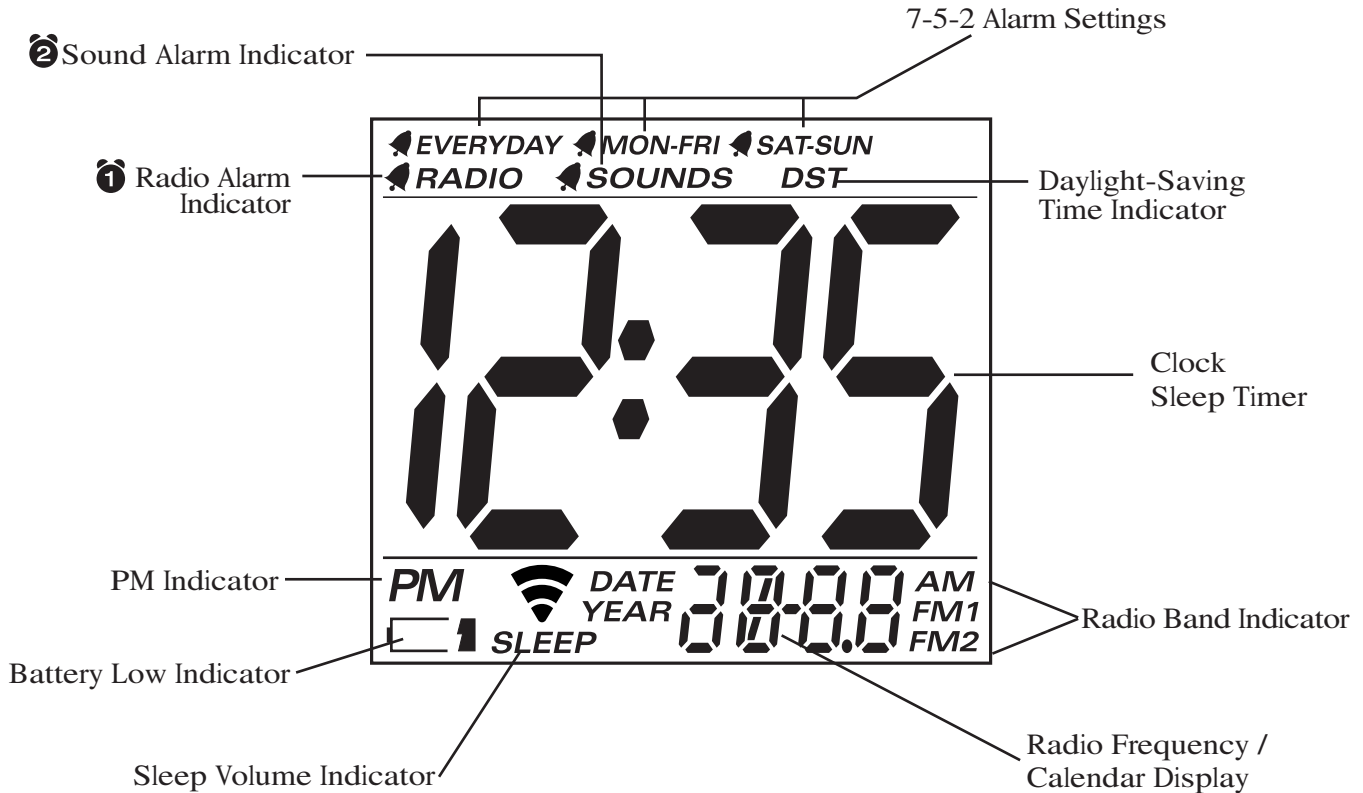


M Memory Set
 1-6 Buttons



FRONT VIEW

LCD Display with Indicators



Auto-Set and Manual Time and Date Settings

Auto-Set Time and Date Settings

This model is equipped with the Auto-Set feature, meaning that the time and date have been programmed at the factory and will already be set when you first plug the model in. Auto-Set will automatically adjust the time and date settings for daylight-saving time and leap years. Auto-Set is programmed for Eastern Standard Time; if you do not live in this time zone, you can easily switch the setting to one of six other time zones.

1. To change your time zone setting, press and hold the **8 Time Zone Button**. The current **Auto-Set Time Zone** in the lower-right-hand corner of the display will flash for approximately ten seconds, after which the display will revert to the standard clock display.
2. While the **Auto-Set Time Zone** is flashing, press the **1 Reverse** and **6 Forward Buttons** to select your time zone. The display will show each zone's current time setting. There are seven zones to choose from:

Auto-Set Time Zones

- Z-01** —————> **Atlantic Standard Time**
- Z-02** —————> **Eastern Standard Time**
- Z-03** —————> **Central Standard Time**
- Z-04** —————> **Mountain Standard Time**
- Z-05** —————> **Pacific Standard Time**
- Z-06** —————> **Alaskan Standard Time**
- Z-07** —————> **Hawaiian Standard Time**

3. Find your time zone, then press the **4 Enter Button** or wait about ten seconds for the clock to beep twice and the setting to lock into place.

Manual Time and Date Settings

1. To change your time setting, press and hold the **J Time Set Button** so that the clock display begins flashing.
2. While the display flashes, press the **1 Reverse** and **6 Forward Buttons** to set the time. Hold a button for a few seconds to set the time rapidly. Be sure to set the correct AM/PM time, shown by the **PM Indicator**.
3. After setting the time, press the **4 Enter Button** or wait about ten seconds for the clock to beep twice and the setting to lock into place.
4. To change the calendar, press and hold the **9 Date/7-5-2 Button** until the display shows the flashing year.
5. Press the **1 Reverse** and **6 Forward Buttons** to set the current year. When you have selected the year, press the **4 Enter Button**, then use the **1 Reverse** and **6 Forward Buttons** to set the month/day.
6. After you have set the date, press the **4 Enter Button** or wait for the display to beep twice and lock into place.

Operating the Dual Alarm System

This clock radio features a dual alarm system, with two alarms that can be operated independently. The alarms can be set to wake two people at different times, or to have a main alarm and a backup. One alarm features your choice of radio stations as an alarm wake sound, while the second features a nature sound or buzzer as an alarm wake sound. You can set the radio alarm, the nature sound/buzzer alarm, or both alarms.

Setting the Alarm 1 for AM/FM Radio

1. Press and hold the **2 Radio Alarm 1 Button**. The display will flash and the **Radio Alarm Indicator** will appear. If you do not begin setting the time within ten seconds of pressing the button, the display will stop flashing and you will need to press the **2 Radio Alarm 1 Button** again.
2. While the display flashes, press the **1 Reverse** and **6 Forward Buttons** to set the wake time. Hold a button for a few seconds to set the time rapidly. Be sure to set the correct AM/PM time, as shown by the **PM Indicator**.
3. After setting the radio alarm time, while the display is still flashing you will need to select the station. First, press the **L Mode/DST Button** to select a radio frequency. Next, select a station using the **M Memory Set 1-6 Buttons**. For more information on programming radio stations into memory, see the *Programming Radio Station Settings* section of this manual. Rotate the **O Volume Thumbwheel** to set the wake sound volume.
4. After setting the radio alarm wake time and sound, you will need to select the 7-5-2 setting. The 7-5-2 setting lets you set the alarm for a full week, weekdays only, or the weekend. Before setting the alarm, be sure that the correct date is set, as shown in the *"Auto-Set" and Manual Time and Date Settings* section of the manual. While the display is still flashing, press the **9 Date/7-5-2 Button** until the desired setting is shown.
5. After you have set the radio alarm wake time, sound, and 7-5-2 setting, press the **4 Enter Button**. The **Radio Alarm Indicator** will appear on the display, showing that the radio alarm has been set.

Setting Alarm 2 for Nature Sounds/Buzzer

1. Press and hold the **7 Nature Sounds/Buzzer Alarm 2 Button** until the Alarm 2 settings and **Sounds Alarm Indicator** appear on the display.
2. Press the **1 Reverse** or **6 Forward Button** to set the Alarm 2 time.
3. Use the **L Mode/DST Button** to select a nature sound or the buzzer to wake to. There is a choice of five sounds:
Sound #1: Ocean Surf
Sound #2: Birds
Sound #3: Brook
Sound #4: Wind Chimes
buz: Buzzer
4. See Note #4 in the *Setting Alarm 1* section for instructions on setting the 7-5-2 alarm setting for Alarm 2.
5. After you have programmed the Alarm 2 settings, press the **4 Enter Button** or wait ten seconds to return to the clock display. The **Sounds Alarm Indicator** will appear on the display, showing that the alarm is set.

Operating the Dual Alarm System (Continued)

Activating the Alarms

1. To activate the radio alarm, make sure that the **Radio Alarm Indicator** appears on the display. If it does not, press the **2 Radio Alarm 1 Button** once so that it does. As long as the indicator appears, the alarm will sound at the set time and days.
2. To activate the nature sounds/buzzer alarm, make sure that the **Sounds Alarm Indicator** appears on the display. If it does not, press the **7 Nature Sounds/Buzzer Alarm 2 Button** once so that it does.
3. When the alarm sounds, press the **3 Off/Reset Button** to turn off the alarm while still maintaining the programmed 7-5-2 alarm settings. To turn off an alarm and cancel its 7-5-2 settings, press its Alarm Button so that its Alarm Indicator no longer appears on the display.
4. To activate the snooze feature, press the **5 Snooze/Dimmer Bar** when the alarm sounds. The alarm will shut off for approximately ten minutes before sounding again. The feature can be repeated several times during the one-hour snooze cycle.
5. If it is not turned off, the alarm will sound for an hour before stopping. As long as an **Alarm Indicator** appears on the display, the alarm will sound at the set time, according to the 7-5-2 settings.

Daylight-Saving Time (DST) and Leap Year Adjustments

If you live in an area that does not observe Daylight-Saving Time, it will be necessary for you to manually set the Daylight-Saving Time (DST) function.

- Press the **N Power/Sleep Button** to turn the unit OFF.
- Press and hold the **L Mode/DST Button** for 5 seconds to turn “DST” on. The LCD display will indicate “DST”.
- Press and hold the **L Mode/DST Button** for 5 seconds again to cancel the “DST” function and restore to standard time.

Adjusting the Display Backlight

- This alarm clock radio features an adjustable display backlight, with dim, medium, and bright settings. To select a backlight setting, press the **5 Snooze/Dimmer Bar** until the desired brightness is reached.
Please note that the backlight will not work while the clock is operating on battery power.

Listening and Sleeping to the Radio

Operating the Radio

1. Press the **N Power/Sleep Button** once to turn on the radio.

Note: If the **N Power/Sleep Button** is pressed more than once, the unit will enter the sleep mode, with the radio operating on a timer. See *Sleeping to the Radio Using the Timer* for more information about this feature.

2. Press the **L Mode/DST Button** to select the AM band or one of the two FM bands. The **Radio Band Indicator** will show which frequency is in use.
3. Press the **1 Reverse** and **6 Forward Buttons** to tune into a radio station. To scan the stations, hold a button for about three seconds. The radio will rapidly advance to the next strong signal.
4. You may also use the **M Memory Set Buttons** to select a preset radio station. See the *Programming Radio Station Memories* section for instructions on programming radio station settings.
5. Rotate the **O Volume Thumbwheel** to adjust the volume level.
6. Press the **3 Off/Reset Button** to turn the power off.

Programming Radio Station Settings

This Alarm Clock Radio features a total of 18 programmable radio settings: 12 FM stations and six AM stations. These allow you to preset your favorite stations and access them quickly.

1. Press the **N Power/Sleep Button** once to turn on the radio.
2. Press the **L Mode/DST Button** to select a radio band. The **AM/FM Radio Indicator** will show which band is in use.
3. Press the **1 Reverse** and **6 Forward Buttons** to find a station to program into the memory.
4. When you have reached the station you wish to program, press and hold one of the six **M Memory Set Buttons** until you hear a beep. The radio station has now been programmed into that preset slot, and you can reach the station by pressing its **M Memory Set Button** while the radio is turned on.
5. Follow the above instructions to continue programming radio station settings into the memory. You can save a total of 18 stations using the three bands.
6. To edit a setting, enter a different radio station as an existing **M Memory Set Button**. This overrides the original setting.

Antenna Information and Adjustment

FM – Extend the FM wire antenna to its full length and vary the direction to its strongest signal.

AM – The AM bar antenna is located inside the cabinet. Rotate the unit until you find the strongest AM signal.

Last Station Memory

The tuner always remembers the last station selected before the radio was switched off, and automatically selects the station again when the radio is turned on.

Sleeping to the Radio Using the Timer

Note: For more information about playing the radio, see the *Listening to the Radio* section of this manual.

1. Press the **N Power/Sleep Button** twice to enter the sleep mode.
2. Continue pressing the **N Power/Sleep Button** to select a 90-, 60-, 30-, or 15-minute sleep time. When the display shows the desired sleep time, stop pressing the button. The sleep timer setting remains active for approximately ten seconds before returning to the standard clock display. The **Sleep Indicator** will appear, showing that the radio timer has been activated.
3. Select a radio station using the **L Mode/DST Button** and the **M Memory Set Buttons**.
4. Press the **K Sleep Volume Button** to adjust the sleep volume to a comfortable level without affecting the alarm volume. The **Sleep Volume Indicator** will show the current sleep volume level. Turning the **O Volume Thumbwheel** will also adjust the sleep volume.
5. The radio will play for the programmed sleep time and then shut off. To check how much sleep time is remaining, press the **N Power/Sleep Button** once.
6. To turn off the radio before the sleep time has elapsed, press the **3 Off/Reset Button**.

Sleeping to Nature Sounds with Timer

1. Press the **N Power/Sleep Button** twice to enter the sleep mode. This sets the sleep timer to the 90-minute setting. The sleep timer setting remains active for approximately ten seconds before returning to the standard display. The **Sleep Indicator** will be visible in the LCD display.
2. Continue pressing the **N Power/Sleep Button** to select a 90-, 60-, 30-, or 15-minute sleep timer.
3. Press the **L Mode/DST Button** then **1 Reverse** or **6 Forward Button** to choose from the four nature sounds.
4. Press the **K Sleep Volume Button** to find a comfortable sleep volume level. The **Sleep Volume Indicator** on the display shows the sleep volume level. Adjusting the sleep volume will not affect the alarm volume.
5. Press the **3 Off/Reset Button** to turn off the nature sounds before the sleep time has elapsed.

Note: To see the number of minutes remaining on the sleep timer, press the **N Power/Sleep Button** once. The display will show the **Sleep Time** for approximately ten seconds before returning to the normal mode.

Limited 90-Day Warranty Information

Timex Audio Products, a division of SDI Technologies Inc. (hereafter referred to as SDI Technologies), warrants this product to be free from defects in workmanship and materials, under normal use and conditions, for a period of 90 days from the date of original purchase.

Should this product fail to function in a satisfactory manner, it is best to first return it to the store where it was originally purchased. Should this fail to resolve the matter and service still be required by reason of any defect or malfunction during the warranty period, SDI Technologies will repair or, at its discretion, replace this product without charge (except for a \$5.00 charge for handling, packing, return UPS/postage, and insurance). This decision is subject to verification of the defect or malfunction upon delivery of this product to the Factory Service Center listed below. The product must include proof of purchase, including date of purchase. The fee for service after the warranty period or without proof of purchase is \$10.00.

Before returning this product for service, please first replace the batteries (if applicable) with fresh ones, as exhausted or defective batteries are the most common cause of problems encountered.

If service is still required:

1. Remove the batteries (if applicable) and pack the unit in a well padded, heavy corrugated box.
2. Enclose a photocopy of your sales receipt, credit card statement, or other proof of the date of purchase, if within the warranty period.
3. Enclose a check or money order payable to the order of SDI Technologies, for the sum of \$5.00 (\$10.00 after warranty period).
4. Send the unit prepaid and insured, to the Factory Service Center listed below.

SDI Technologies Inc.
Timex Audio Products Division
1330 Goodyear Dr.
El Paso, TX 79936-6420

NOTE: This warranty is valid only if the product is used for the purpose for which it was designed. It does not cover (i) products which have been damaged by negligence, misuse or accident, or which have been modified or repaired by unauthorized persons; (ii) cracked or broken cabinets, or units damaged by excessive heat; (iii) damage to CD's or tape cassettes (if applicable); (iv) the cost of shipping this product to the Factory Service Center and its return to the owner.

This warranty is valid only in the United States of America and does not extend to owners of the product subsequent to the original purchaser. Any applicable implied warranties are also limited to 90 days, and SDI Technologies will not be liable for consequential damages. (Some states do not allow limitations on implied warranties or exclusion of consequential damages, so these restrictions may not apply to you.) This warranty gives you specific legal rights, and you may also have other rights which vary from state to state.

For questions or comments regarding this or other products, please call our toll-free number 1-800-888-4491. TIMEX is a registered trademark of Timex Corporation in the U.S. and other countries.