

# Operating/Service Instructions

## 26" SNOW THROWER

Model No.  
314 - 830A

### WARRANTY

For one year from date of purchase, MTD Products Inc., will replace for the original purchaser, free of charge, F.O.B. factory or authorized service firm, any part or parts found to be defective in material or workmanship. All transportation charges on parts submitted for replacement under this warranty must be paid by the purchaser. This warranty does not include replacement of parts which become inoperative through misuse, excessive use, accident, neglect, improper maintenance or alterations by unauthorized persons. This warranty does not include the engine, motor, battery, battery charger or any component parts thereof. For service on these units refer to the applicable manufacturer's warranty.

The above warranty will apply only to the original owner and will be effective only if the warranty card has been properly processed. It will not apply where the unit has been used commercially.

Warranty service is available through your local authorized service dealer or distributor. UNDER NO CIRCUMSTANCES WILL THE RETURN OF A COMPLETE UNIT BE ACCEPTED BY THE FACTORY UNLESS PRIOR WRITTEN PERMISSION HAS BEEN EXTENDED.

### SAFETY RULES

1. Know the controls and how to stop quickly—READ THE OWNER'S MANUAL.
2. Disengage power and stop motor before cleaning discharge, removing obstacles, making adjustments, or when leaving operation position.
3. Never direct discharge at bystanders nor allow anyone in front of machine—debris may be hidden in the snow.
4. Keep children and pets a safe distance away.
5. Do not allow children to operate machine nor allow adults to operate it without proper instruction.
6. Adjust height to clear gravel or crushed rock surface.
7. Exercise caution to avoid slipping or falling, especially when operating in reverse.
8. Handle gasoline with care — it is highly flammable.
  - A. Use approved gasoline container.
  - B. Never add gasoline to a running motor — fill tank out of doors and wipe up spilled gasoline.
  - C. Replace gasoline cap securely.
  - D. Open door if motor is run in garage — exhaust gases are dangerous.
9. Disengage all clutches and shift into neutral before starting motor. Keep hands, feet and clothing away from power driven parts.
10. Use a grounded three wire extension cord for all plug-in electric units.
11. Keep machine in good operating condition and keep safety devices in place.

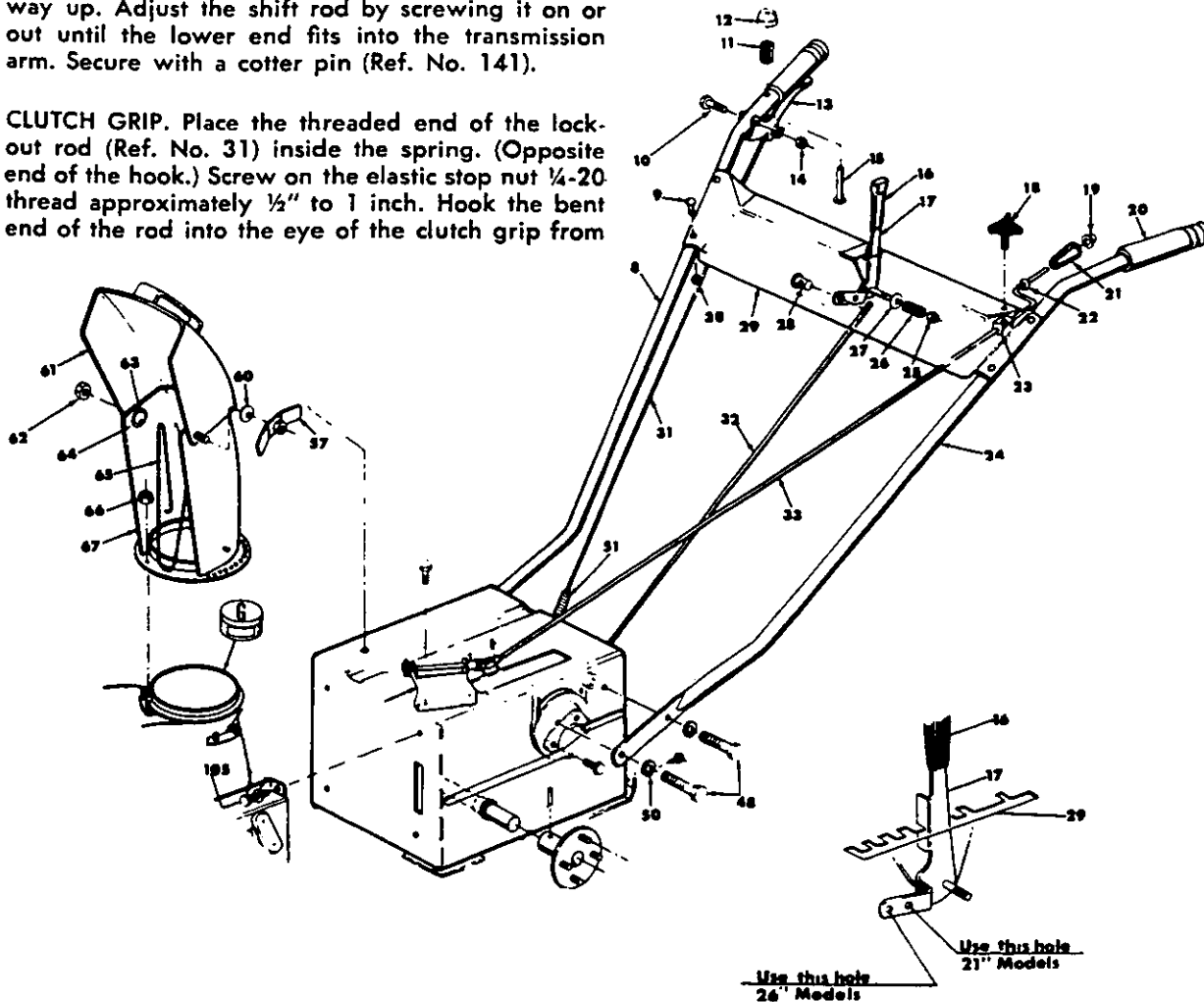
## ASSEMBLY INSTRUCTIONS

Right hand (R.H.) and left hand (L.H.) are as observed from the operating position.

1. Assemble chrome handles (Ref. Ncs. 8 and 24) to the frame with four hex head cap screws  $\frac{3}{8}$ -16 x  $\frac{3}{4}$  long and four lock washers  $\frac{3}{8}$ ". DO NOT TIGHTEN.
2. Assemble handle panel (Ref. No. 29) to the handles with the four carriage bolts  $\frac{1}{4}$ -20 x  $1\frac{1}{2}$  lg. and hex locknuts  $\frac{1}{4}$ -20 thd. Assemble handle panel so you can read the instructions on the handle panel from the operating position. LIFT HANDLE UP AS YOU TIGHTEN ALL BOLTS AND NUTS ON THE HANDLE ASSEMBLY.
3. Move the shift lever (Ref. No. 17) on the handle panel all the way forward into No. 5 position: Use hole marked "26". Assemble the ferrule to the end hole in the shift lever from the R.H. side. Screw in the shifting rod (Ref. No. 32) into the ferrule. Move the shift lever into the reverse (R) position. Lift the transmission arm on the rear of the frame all the way up. Adjust the shift rod by screwing it on or out until the lower end fits into the transmission arm. Secure with a cotter pin (Ref. No. 141).
4. CLUTCH GRIP. Place the threaded end of the lock-out rod (Ref. No. 31) inside the spring. (Opposite end of the hook.) Screw on the elastic stop nut  $\frac{1}{4}$ -20 thread approximately  $\frac{1}{2}$ " to 1 inch. Hook the bent end of the rod into the eye of the clutch grip from

the right hand side. With the clutch in the released position, hook the spring into the hole in the linkage arm. The spring and rod should be just tight enough so the rod is not too loose. Adjust the elastic stop nut if necessary.

5. Chute Crank. Assemble the chute crank (Ref. No. 33) into the two holes in the handle panel being sure the rod passes through the lock bracket (Ref. No. 23). It may be necessary to loosen the black knob (Ref. No. 18) on the handle panel. Push the rod all the way through and assemble it to the universal joint with a cotter pin (Ref. No. 71).
6. Remove the wing nut, washer and carriage bolt  $5/16$ -18 x  $\frac{3}{8}$  lg. from the chute assembly. Lift the deflector and reassemble. If the deflector does not pivot easily loosen the bolt and nut so it pivots freely. CAUTION: Release main clutch lever but do not pry down on lever. Excessive leverage will damage idler bracket and cause misalignment of idler pulley. Belt problems will result.



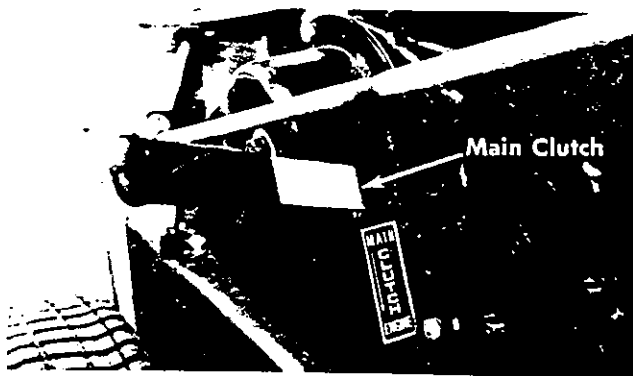


FIGURE 1.

**CONTROLS**

**Auger Clutch** is located on the Left Hand side of the frame just behind the thrower housing. (Shown in the disengaged position.) When the handle is up, the auger is disengaged. **WARNING:** Engaging auger clutch with main clutch already engaged will damage pins on sprocket hub assembly. Damaged pins cause hard engagement and clutch malfunction. Do not engage or disengage the auger clutch without first disengaging the main clutch. Disengaging the auger clutch allows you to drive the snow thrower to and from the work area without the auger turning. (See figure 2.)

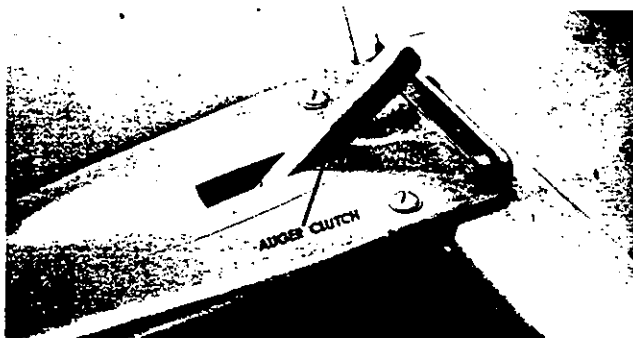


FIGURE 2.

**Main Clutch.** This clutch shuts off the power to the wheels and auger. When the handle is up it is in the disengaged position. Always shut off the main clutch when engaging and disengaging the auger clutch. (Shown in the disengaged position.) (See figure 1.)

**Grip Clutch.** The grip clutch engages and disengages the drive wheels. To engage the clutch, squeeze the handle and depress the button to lock it. Squeezing the handle again will release it. (Shown in the disengaged position.) (See figure 3.)

**Shift Lever.** The shift lever determines the direction and speed forward of the drive wheels. Always release the grip clutch when shifting gears. (See figure 3.)

**Chute Controls.** Release the lock and turn the crank to rotate the chute. Loosen the wing nut to adjust the deflector. (See figure 3.)

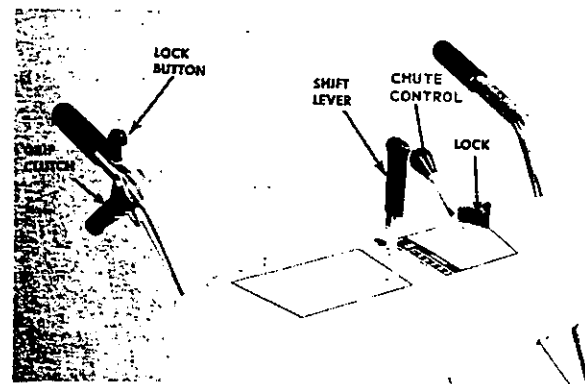


FIGURE 3.

**SKID SHOES**

The skid shoes on each side of the thrower are adjustable by loosening the bolts and nuts.

**Low Position**—Close snow removal.

**Middle or High Position**—Use when road is uneven. The skid shoes and shave plate should be replaced when worn.

The skid shoes may be tipped for better operation.

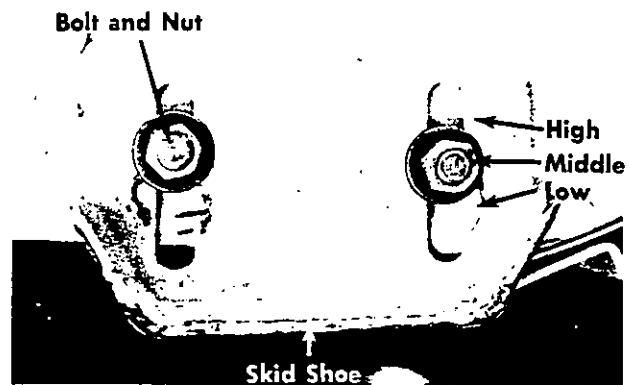
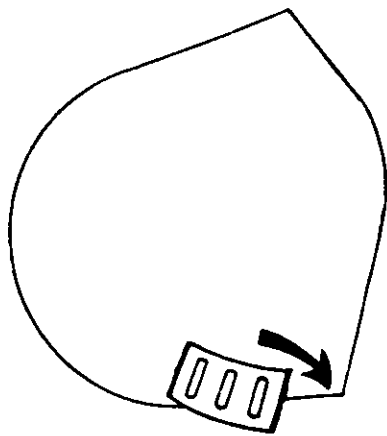
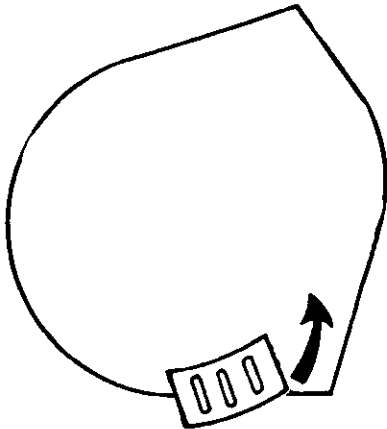


FIGURE 4.



Tip front of skid shoe down when operating in hard packed snow.



Tip front of skid shoe up when operating in loose stone or soft areas.

### STARTING YOUR SNOW THROWER

1. Follow your engine instructions for lubrication and gasoline.
2. Disengage the main clutch (Lever UP).
3. Release the grip clutch and put the shift lever in neutral position (N).
4. Start the engine in accordance with the engine manual.

### OPERATION

1. With the main clutch disengaged and with the engine running at near top speed, engage the auger clutch. (See figure 2.)
2. SLOWLY engage the main clutch.

3. Move the shift lever into number one position. (Use the slow speeds until you are familiar with the operation of your snow thrower.)
4. Squeeze the grip clutch and the snow thrower will move. Release it and it will stop.
5. Never move the shift lever without releasing the grip clutch. The higher the forward position number the faster the snow thrower will move over the ground.
6. NEVER attempt to clean the chute or make any adjustments while the engine is running.

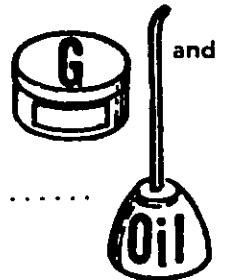
### **NOTE**

For traction, chains are recommended. See page 5.

### LUBRICATION

Refer to pages 11 and 12. Lubricate after each 25 hours of operation, the parts indicated. Use multipurpose

automotive grease on parts marked



SAE 30 engine oil on parts marked .....

### NOTE

If repairs or service is needed on the engine or engine controls such as the primer, choke or throttle control, contact your nearest authorized engine service outlet. Check the "Yellow Pages" of your telephone book under "Engines—Gasoline".



## REMOVING THE DRIVE UNIT CONTAINING THE FRICTION DRIVE WHEEL

The clutch bracket must pivot freely and the clutch linkage must be loose.

1. Remove the frame cover.
2. Remove cotter pins from linkage arm, shifting yoke rod and shifting rod.
3. Remove the two screws from the pivot bracket assembly and lift the bracket up.
4. Remove the three  $\frac{3}{8}$ " screws holding the clutch shaft and chain bracket out.
5. Turn and lift out the entire unit from the frame. It may be necessary to loosen the nut on the clutch linkage.
6. The unit can now be disassembled on a work bench.
7. Remove five  $\frac{3}{7}$ " nuts and one  $\frac{3}{8}$ " elastic stopnut.
8. Remove clutch fork bracket assembly and the bevel gear housing assembly.
9. Remove three  $\frac{1}{4}$ " nuts on the drive wheel shaft on the bevel pinion.
10. Pull out the clutch shaft.
11. Knock out the drive wheel shaft with a drive pin from the opposite end of the pinion.
12. Lift out the friction wheel and fork assembly as a unit.
13. Loosen the three  $\frac{5}{16}$ " screws holding the friction drive wheel to the friction wheel adapter.
14. Reassemble with new wheel.

### NOTE

When reassembling the drive unit the input chain pinion (Ref. No. 216) should turn freely. If it turns too tightly, loosen the bearing cap and move the bevel gear away from the pinion slightly.

### PNEUMATIC TIRE PRESSURE

The tires are over inflated for shipping purpose. Tire pressure should be 7 to 10 psi.

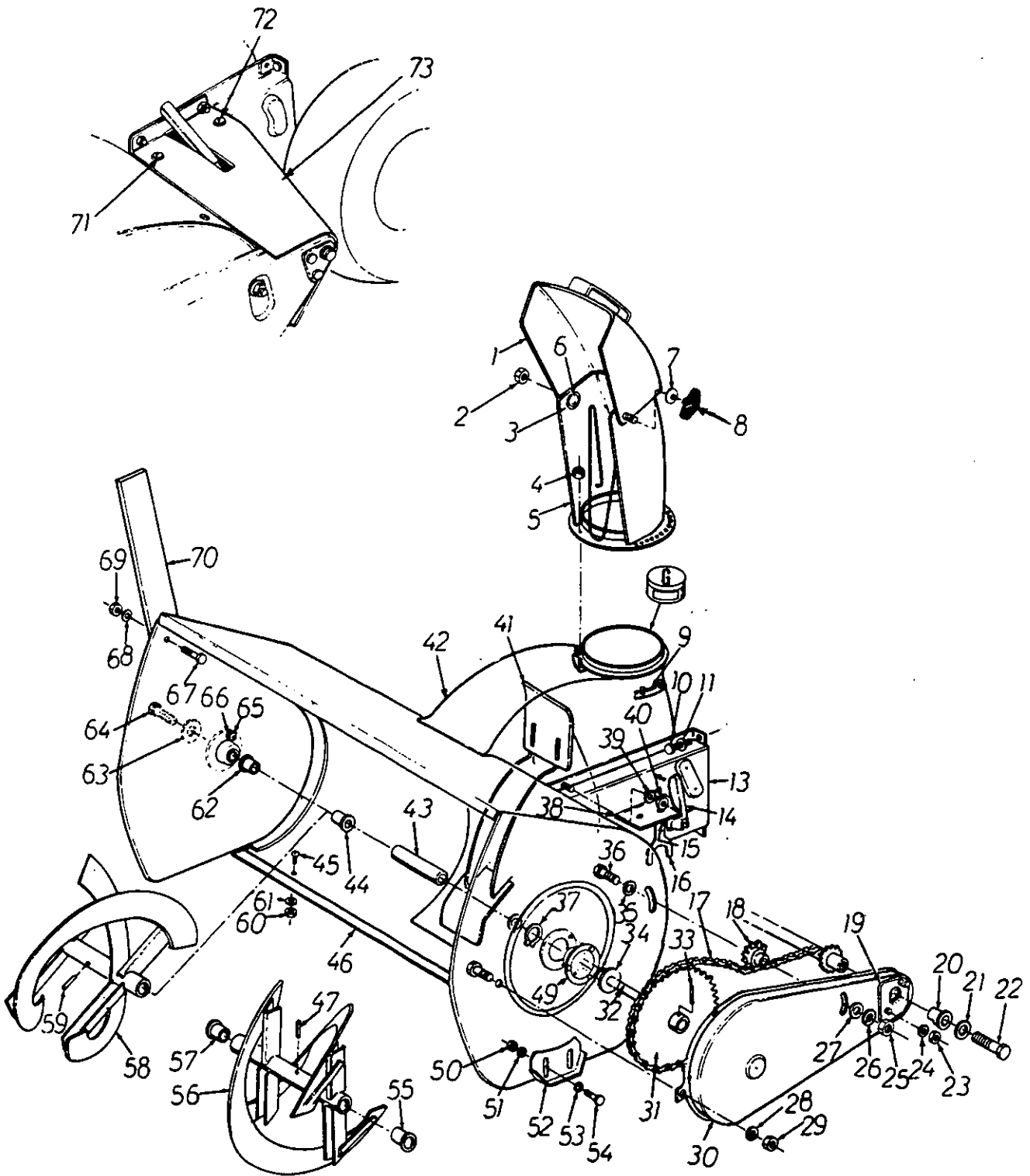
**NOTE:** If the tire pressure is not equal in both tires the unit may pull to one side or the other.

### NOTE

For more traction, chains are recommended.

Tire Sizes	Chains
13.0 x 5.00	394-990A

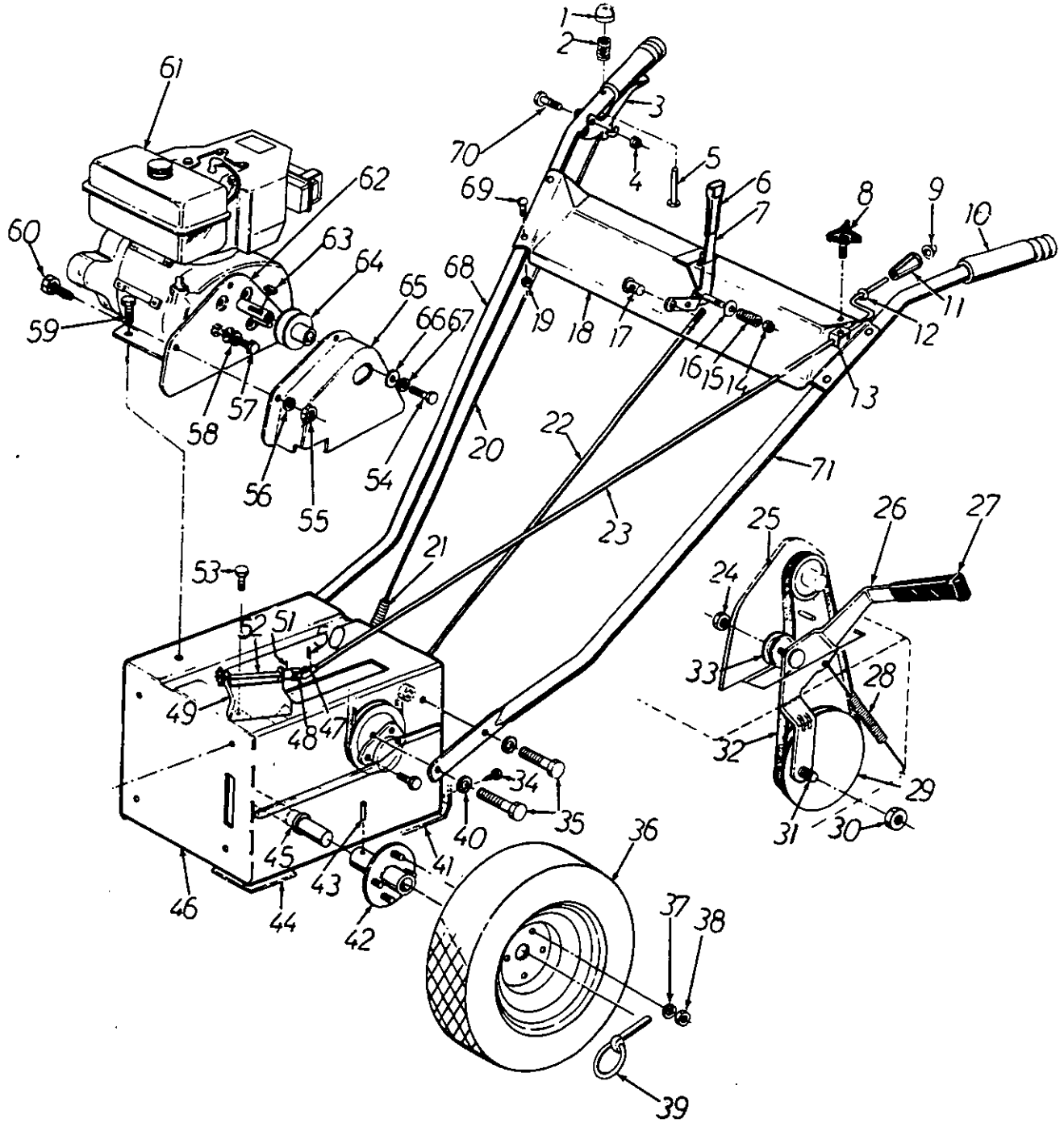
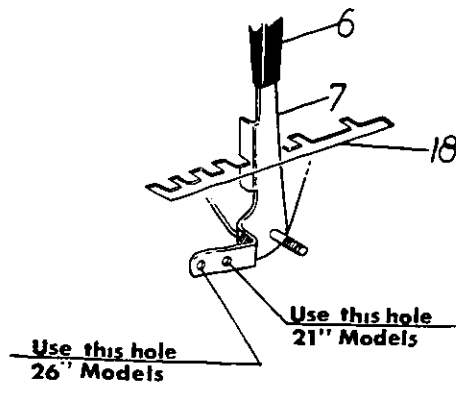
# 314 - 830A



PARTS LIST FOR MODEL 314-830A

REF. NO.	PART NO.	COLOR CODE	DESCRIPTION	NEW PART	REF. NO.	PART NO.	COLOR CODE	DESCRIPTION	NEW PART
1	5225-456		Top Chute Ass'y.		38	5240		Yoke Brkt. Ass'y.	
2	712-0158		Hex Cent. L-Nut 5/16-18 Thd.		39	736-0119		L-Wash. 5/16" Scr.*	
3	710-0260		Carriage Bolt 5/16-18 x .62" Lg.*		40	712-0267		Hex Nut 5/16-18 Thd.*	
4	712-0107		Hex Cent. L-Nut 1/4-20 Thd.		41	5038-456		Thrower Paddle Ass'y.	N
5	5223-456		Chute Ass'y.		42	5429-456		Spiral Hsg. Ass'y.	
6	736-0179		Fl-Wash.		43	5115-456		Spacer	
7	736-0105		Bell-Wash.		44	5136-456		Bushing	
8	9966		Handle Knob Ass'y.		45	710-0260		Carriage Bolt 5/16-18 x .62" Lg.	
9	5031		Chute Flange Keeper Ass'y.		46	5000-456		Shave Plate	
10	710-0216		Hex Scr. 3/8-16 x .75" Lg.*		47	715-0118		Spring Pin Spirol 5/16 Dia. x 1.75" Lg.*	
11	736-0169		L-Wash. 3/8" Scr.*		49	5360		Bearing Housing Ass'y.	
13	5045		Frame Plate Ass'y.—L.H.		50	712-0798		Hex Nut 3/8-16 Thd.*	
14	5106		Eccenter		51	736-0105		Bell Wash.	
15	732-0249		Compression Spring		52	5002-456		Slide Shoe	
16	5107		Shifting Yoke Ass'y.		53	736-0198		Fl-Wash. .75 I.D. x 1.25 O.D.	
17	713-0127		Chain w/Master Link #41 x 40" Lg.		54	710-0389		Carriage Bolt 3/8-16 x .75" Lg.*	
18	723-0168		Sprocket Idler—10 Tooth		55	5136		Bushing	
19	5152-456		Chain Guard Brkt.		56	5018-456		Spiral Ass'y.—L.H.	
20	748-0142		Flange Bearing .500 Dia.		57	5136		Bushing	
21	736-0264		Fl-Wash. .33 I.D. x .750 O.D.		58	5017-456		Spiral Ass'y.—R.H.	
22	710-0538		Hex Scr. w/Lock 5/16-18 x .62" Lg.*		59	715-0118		Spring Pin Spiral 5/16 Dia. x 1.75" Lg.	
23	712-0107		Cent. L-Nut 1/4-20 Thd.		60	712-0267		Hex Nut 5/16-18 Thd.*	
24	736-0175		Wave Wash. 1/4" Scr.		61	736-0119		L-Wash. 5/16" Scr.*	
25	712-0798		Hex Nut 3/8-16 Thd.*		62	5136		Bushing	
26	736-0169		L-Wash. 3/8" Scr.*		63	736-0123		Fl-Wash. .341 I.D.	
27	736-0300		Fl-Wash. .39 I.D. x .78 O.D.		64	710-0538		Hex Scr. w/Lock 5/16-18 x .62" Lg.	
28	736-0119		L-Wash. 5/16" Scr.*		65	712-0287		Hex Nut 1/4-20 Thd.*	
29	712-0267		Hex Nut 5/16-18 Thd.*		66	736-0329		L-Wash. 1/4" Scr.*	
30	5451-456		Chain Guard	N	67	710-0260		Carriage Bolt 5/16-18 x .62" Lg.*	
31	713-0176		60 Tooth Sprocket Hub Ass'y.		68	736-0119		L-Wash 5/16" Scr.*	
32	738-0226		Spiral Axle		69	712-0267		Hex Nut 5/16-18 Thd.*	
33	715-0118		Spirol Pin 5/16 Dia. x 1.75" Lg.*		70	5139-456		Guide Blade	
34	741-0170		Flange Brg.		71	736-0329		L-Wash. 1/4" Scr.*	
35	736-0300		Fl-Wash. .39 I.D. x 3/8 O.D.		72	710-0289		Hex Scr. 1/4-20 x .50" Lg.*	
36	710-0347		Hex Scr. 3/8-16 x 1.75" Lg.*		73	5239-456		Auger Clutch Cover	
37	716-0121		Snap Ring 1.50" Dia.						

# 314 - 830A

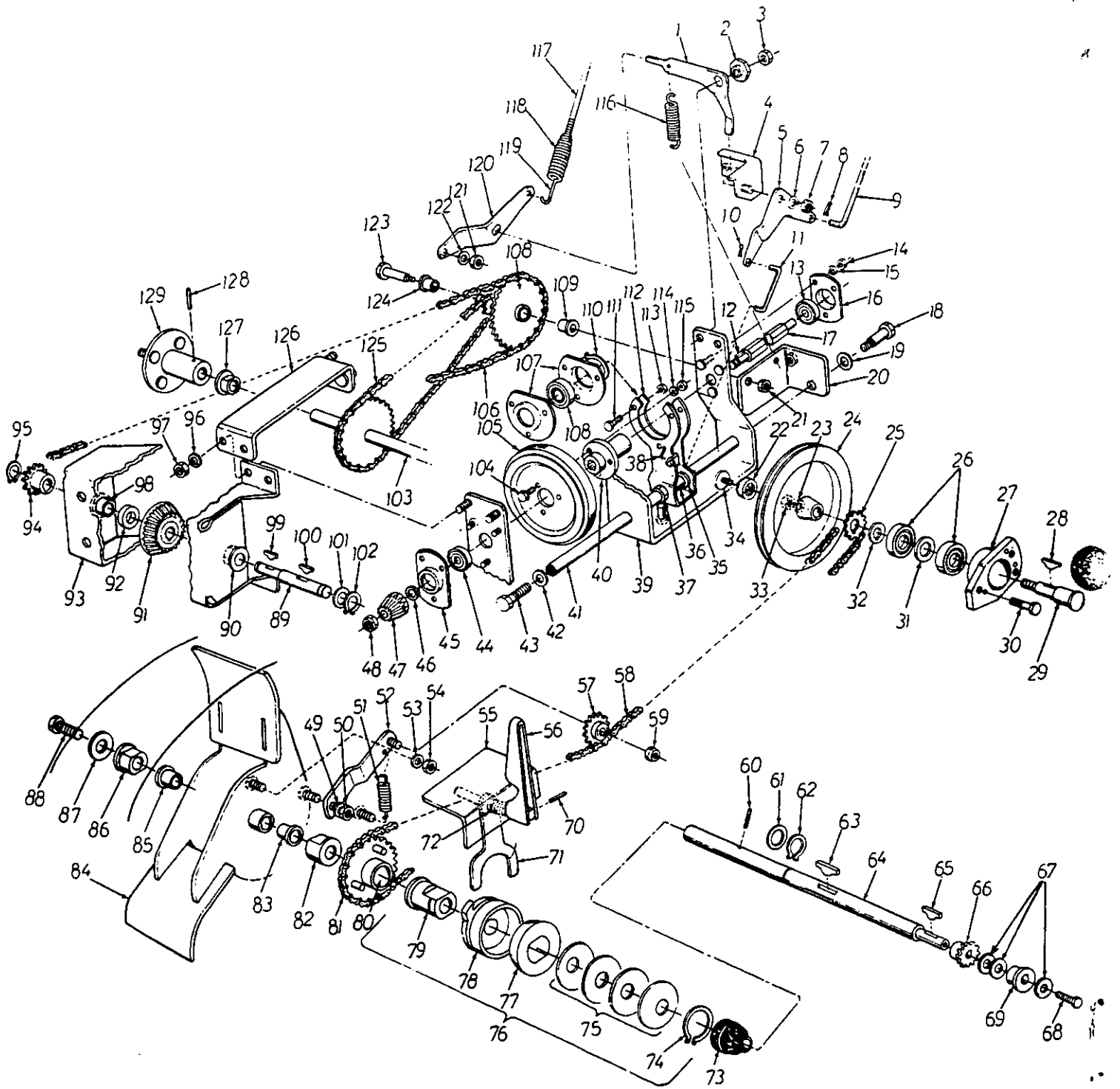




PARTS LIST FOR MODEL 314-830A

REF. NO.	PART NO.	COLOR CODE	DESCRIPTION	NEW PART	REF. NO.	PART NO.	COLOR CODE	DESCRIPTION	NEW PART
1	726-0121		Push Cap 1/4" Dia.—Black		37	736-0169		L-Wash. 3/8 Scr.*	
2	732-0145		Compression Spring		38	712-0798		Hex Nut 3/8-16 Thd.*	
3	5132		Clutch—Grip		39	714-0143		Klik Pin-5/16" Dia. x 1.75" Lg.	
4	712-0107		Hex Cent. L-Nut 1/4-20 Thd.		40	736-0169		L-Wash. 3/8" Scr.*	
5	711-0370		Clutch Grip Lock Pin		41	5048		Plate Ass'y.	
6	720-0142		Fl-Bar Grip—Black		42	5272		Wheel Hub Ass'y.	
7	5131		Shift—Grip		43	715-0118		Spring Pin Spiral 5/16 Dia. x 1.75" Lg.	
8	720-0170		Hand Knob		44	5076		Frame Cover	
9	726-0100		Push Cap 3/8" Dia.		45	748-0151		Flange Brg. .75 I.D.	
10	1166		Grip—Black		46	5043		Frame Ass'y.	
11	720-0171		Knob		47	5066		Joint Brkt. Ass'y.	
12	736-0117		Fl-Wash.		48	711-0358		Joint Block	
13	5121		Chute Crank Lock		49	5116		Chute Brkt. Ass'y.	
14	712-0116		Hex Stop Nut 3/8-24 Thd.		50	711-0111		Cotter Pin 3/32 x 1.00" Lg.*	
15	732-0193		Compression Spring		51	715-0103		Roll Pin 1/8 Dia. x 3/4" Lg.*	
16	736-0105		Bell-Wash.		52	5118		Sprocket Shaft Ass'y.	
17	711-0179		Adj. Ferrule		53	710-0216		Hex Scr. 3/8-16 x .75" Lg.*	
18	5127—456		Panel Assembly		54	710-0152		Hex Scr. 3/8-24 x 1" Lg.*	
19	712-0107		Hex Cent. L-Nut 1/4-20 Thd.		55	712-0287		Hex Nut 1/4-20 Thd.*	
20	747-0113		Lockout Rod		56	736-0329		L-Wash. 1/4" Scr.*	
21	732-0269		Spring		57	710-0237		Hex Scr. 5/16-24 x .62" Lg.*	
22	711-0373		Shifting Rod		58	736-0607		L-Wash. 5/16" Scr.*	
23	5120		Chute Crank		59	710-0442		Hex Scr. 5/16-18 x 1.50" Lg.*	
24	712-0116		Hex Elastic Nut 3/8-24 Thd.		60	710-0289		Hex Scr. 1/4-20 x .50" Lg.*	
25	5228—456		Belt Guard Ass'y.		61	—		Engine	
26	5061		Idler Brkt. Ass'y.		62	5228—456		Belt Guard Ass'y.	
27	720-0142		Fl-Bar Grip—Black		63	714-0128		Sq. Key 1/4 x 1" Lg.*	
28	732-0185		Tension Spring		64	756-0171		3.50 Dia. Pulley .75 Bore	
29	5237		7.50" Dia. Pulley—Dr. Plate		65	5230—456		Top Belt Guard Ass'y.	
30	712-0375		Hex Cent. L-Nut 3/8-16 Thd.		66	736-0235		Fl-Wash.	
31	738-0147		Shld. Bolt 3/8-16 Thd.		67	736-0169		L-Wash. 3/8" Scr.*	
32	754-0131		3V x 35.5 Belt		68	5124		Handle—R.H.	
33	756-0137		Fl-Idler		69	710-0262		Carriage Bolt 5/16-18 x 1.50" Lg.*	
34	710-0224		Hex Self Tap Scr. #10 x .50" Lg.*		70	710-0606		Hex Scr. 1/4-20 x 1.50" Lg.*	
35	710-0216		Hex Scr. 3/8-16 x .75" Lg.*		71	5123		Handle—L.H.	
36	9755—501		Wheel Ass'y.—Comp.						
	734-0219		Tire—Only (12.5 x 4.50-6)						
	734-0210		Tube—Only (12.5 x 4.50-6)						
	10108		Rim Only						

# 314 - 830A



PARTS LIST FOR MODEL 314-830A

REF. NO.	PART NO.	COLOR CODE	DESCRIPTION	NEW PART	REF. NO.	PART NO.	COLOR CODE	DESCRIPTION	NEW PART
1	5087		Clutch Linkage		68	710-0170		Hex Scr. w/Lock 5/16-24 x .62" Lg.*	
2	711-0404		Shld. Nut 5/16-18 Thd.		69	748-0142		Flange Brg. .50" Dia.	
3	712-0158		Hex Cent. L-Nut 5/16-18 Thd.		70	715-0248		Roll Pin 3/16" Dia. x .75" Lg.*	
4	5085		Pivot Bracket Ass'y.		71	5107		Shifting Yoke Ass'y.	
5	5084		Linkage Arm		72	732-0249		Compression Spring	
6	736-0300		Fl-Wash. .39 I.D. x .87 O.D.		73	735-0114		Rubber Bellow	
7	712-0116		Hex Stop Nut 3/8-24 Thd.		74	716-0116		Snap Ring .75" Dia.	
8	714-0111		Cotter Pin 3/32 x 1.00" Lg.*		75	736-0229		Bell-Wash.	
9	711-0373		Shifting Rod		76	5150		Clutch Ass'y.	
10	714-0111		Cotter Pin 3/32 x 1.00" Lg.*		77	717-0151		Clutch Cone	
11	5138		Shifting Yoke-Rod		78	748-0173		Clutch Housing	
12	714-0129		#503 Key 3/8" Dia.		79	748-0172		Clutch Sleeve	
13	741-0131		Ball Bearing		80	748-0171		Bronze Bushing	
14	712-0287		Hex Nut 1/4-20 Thd.*		81	5112		Sprocket Hub Ass'y.	
15	736-0329		L-Wash. 1/4" Scr.*		82	748-0151		Flange Brg. .75" I.D.	
16	5034		Brg. Housing 1.38 Dia.		83	748-0171		Bronze Bushing	
17	711-0360		Drive Wheel Shaft		84	5038-456		Thrower Paddle Ass'y.	
18	710-0253		Hex Scr. 3/8-16 x 1.00" Lg.*		85	748-0171		Bronze Bushing	
19	736-0169		L-Wash. 3/8" Scr.*		86	748-0151		Flange Bearing	
20	5082		Chain Brkt. Ass'y.		87	736-0123		Fl-Wash. .341 I.D. x .06 O.D.	
21	712-0375		Hex Cent. L-Nut 3/8-16 Thd.		88	710-0538		Hex Scr. w/Lock 5/16-18 x .62" Lg.	
22	741-0134		Ball Bearing .25 I.D.		89	711-0361		Bevel Gear Shaft	
23	736-0213		Bell-Wash. .400 I.D. x .88 O.D.		90	748-0227		Flange Brg. .62 I.D.	
24	5237		7.50" Dia. Pulley		91	748-0167		Bevel Gear	
25	717-0197		12 Tooth Sprocket		92	711-0365		Sleeve	
26	741-0919		Ball Bearing .87 Dia.		93	5077		Bevel Gear Housing Ass'y.	
27	10579		Brg. Housing Ass'y.		94	748-0852		8-Tooth Sprocket	
28	714-0132		Hi-Pro Key #605		95	716-0104		"E"-Ring .50" Dia.	
29	711-0525		Drive Shaft		96	736-0169		L-Wash. .38" Scr.*	
30	710-0259		Sems Scr. 5/16-18 x .62" Lg.*		97	712-0711		Hex Nut 3/8-24 Thd.*	
31	736-0197		Fl-Wash. .812 I.D.		98	748-0227		Flange Bearing .62 I.D.	
32	748-0198		Spacer		99	714-0129		#503 Key .62" Dia.	
33	712-0211		Hex Flange L-Nut 3/8-24 Thd.		100	714-0126		#606 Hi-Pro Key	
34	711-0363		Neutral Plate		101	736-0116		Fl-Wash.	
35	748-0227		Flange Brg. .62" I.D.		102	716-0106		"E"-Ring .50" Dia.	
36	711-0364		Shift Sleeve		103	717-0288		Wheel Axle Ass'y.	
37	748-0227		Flange Brg. .62" I.D.		104	710-0198		Sems Scr. 5/16-18 x .75" Lg.*	
38	714-0111		Cotter Pin 3/32" Dia. x 1.00" Lg.*		105	5080		Friction Wheel Ass'y.	
39	5073		Clutch Fork Ass'y.		106	713-0134		#41 Chain w/Master Link x 23" Lg.	
40	748-0166		Friction Wheel Adapter		107	5033		Brg. Housing 2" Dia.	
41	711-0362		Clutch Shaft		108	741-0133		Ball Bearing	
42	736-0169		L-Wash. .38" Scr.*		109	748-0108		Flange Brg. .50 I.D.	
43	710-0216		Hex Scr. 3/8-16 x .75" Lg.*		110	716-0102		Snap Ring	
44	741-0131		Ball Bearing		111	710-0281		Hex Scr. 1/4-28 x .87" Lg.*	
45	5034		Brg. Housing 1.38" Dia.		112	5079		Shift Fork	
46	736-0192		Fl-Wash. .531 I.D. x .94 O.D.		113	712-0896		Hex Stop Nut 1/4-28 Thd.*	
47	748-0866		Bevel Pinion		114	736-0119		L-Wash. 5/16" Scr.*	
48	712-0200		Hex Stop Nut 1/2-20 Thd.		115	712-0267		Hex Nut 5/16-18 Thd.*	
49	736-0300		Fl-Wash. .39 I.D. x .87 O.D.		116	732-0157		Spring	
50	712-0116		Hex Stop Nut 3/8-24 Thd.		117	747-0113		Lockout Rod	
51	732-0157		Spring		118	732-0269		Spring	
52	5063-456		Chain Idler Brkt. Ass'y.		119	712-0324		Hex Stop Nut 1/4-20 Thd.	
53	736-0119		L-Wash. 5/16" Scr.*		120	5088		Clutch Brkt.	
54	712-0267		Hex Nut 5/16-18 Thd.*		121	712-0116		Hex Stop Nut 3/8-24 Thd.	
55	5240		Yoke Brkt. Ass'y.		122	736-0300		Fl-Wash. .39 I.D. x .87 O.D.	
56	5106		Eccenter		123	738-0129		Axle Bolt .50" Dia.	
57	723-0168		Sprocket Idler-10 Tooth		124	748-0108		Flange Brg. .50" I.D.	
58	713-0155		#420 Chain x 40.50" Lg.		125	713-0130		#41 Chain w/Master Link x 22" Lg.	
59	712-0116		Hex Stop Nut 3/8-24 Thd.		126	5075		Clutch Fork Brkt. Ass'y.	
60	715-0118		Spring Pin Spiral 5/16" Dia. x 1.75" Lg.		127	748-0151		Flange Brg. .75" I.D.	
61	736-0198		Fl-Wash. .765 I.D.		128	715-0118		Spring Pin Spiral 5/16" Dia. x 1.75" Lg.	
62	716-0101		Snap Ring .75" Dia.		129	5272		Wheel Hub Ass'y.	
63	714-0137		Hi-Pro Key 3/16 x 3/4" Dia.						
64	738-0178		Thrower Axle						
65	714-0129		#503 Key 3/8" Dia.						
66	748-0852		8-Tooth Sprocket						
67	736-0108		Fl-Wash. .51 I.D. x .75 O.D.						

LUBRICATION POINTS

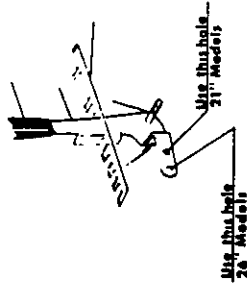
Remove This Plate, (Ref. No. 5) to Service Belt.

Lubricate With Light Oil (Ref. Nos. 11, 26, 51 and 37).

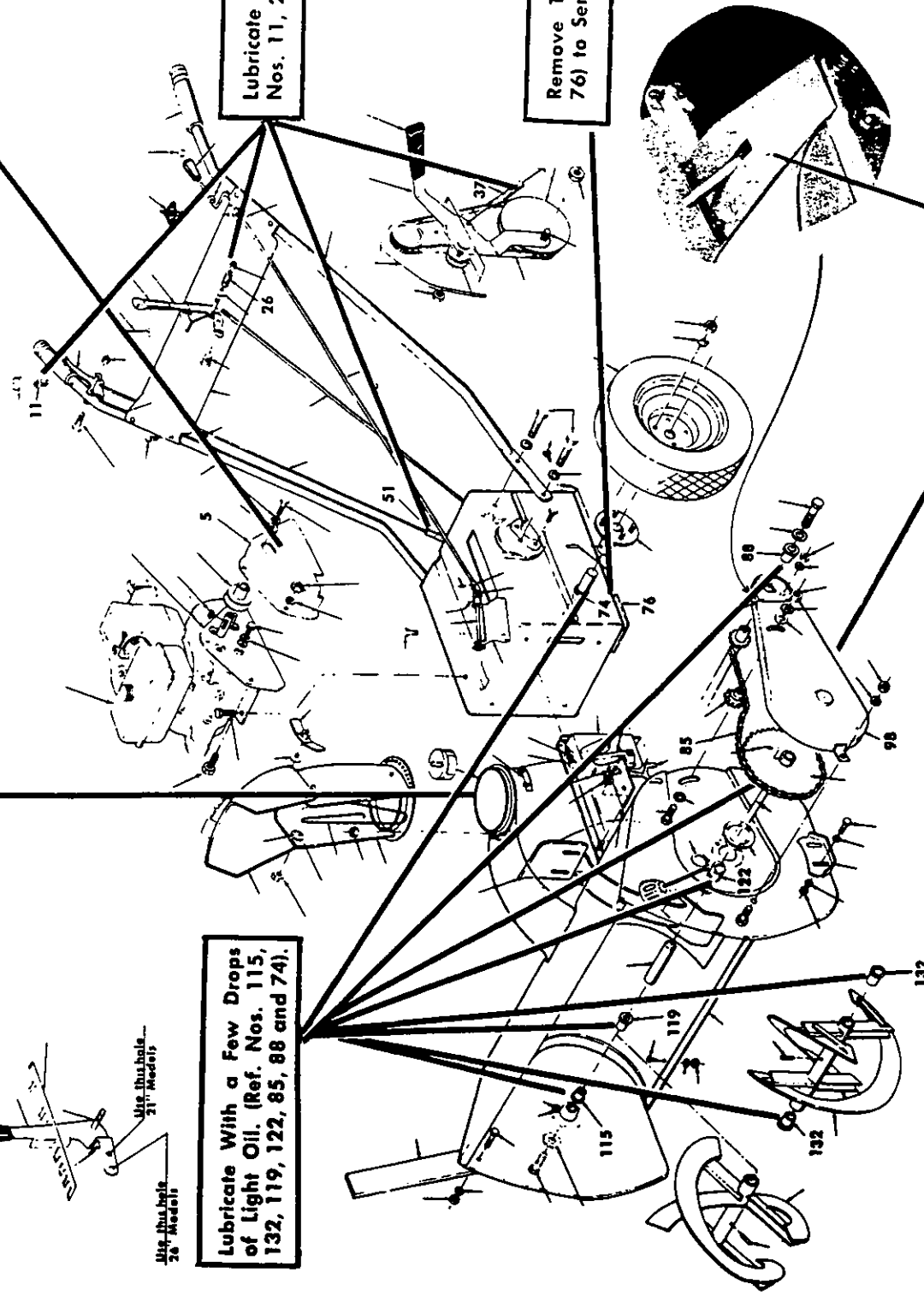
Remove This Plate (Ref. No. 76) to Service Drive Chains.

Lubricate With General Purpose Grease.

Remove This Plate (Ref. No. 43 and 98) to Lubricate Auger Chain.



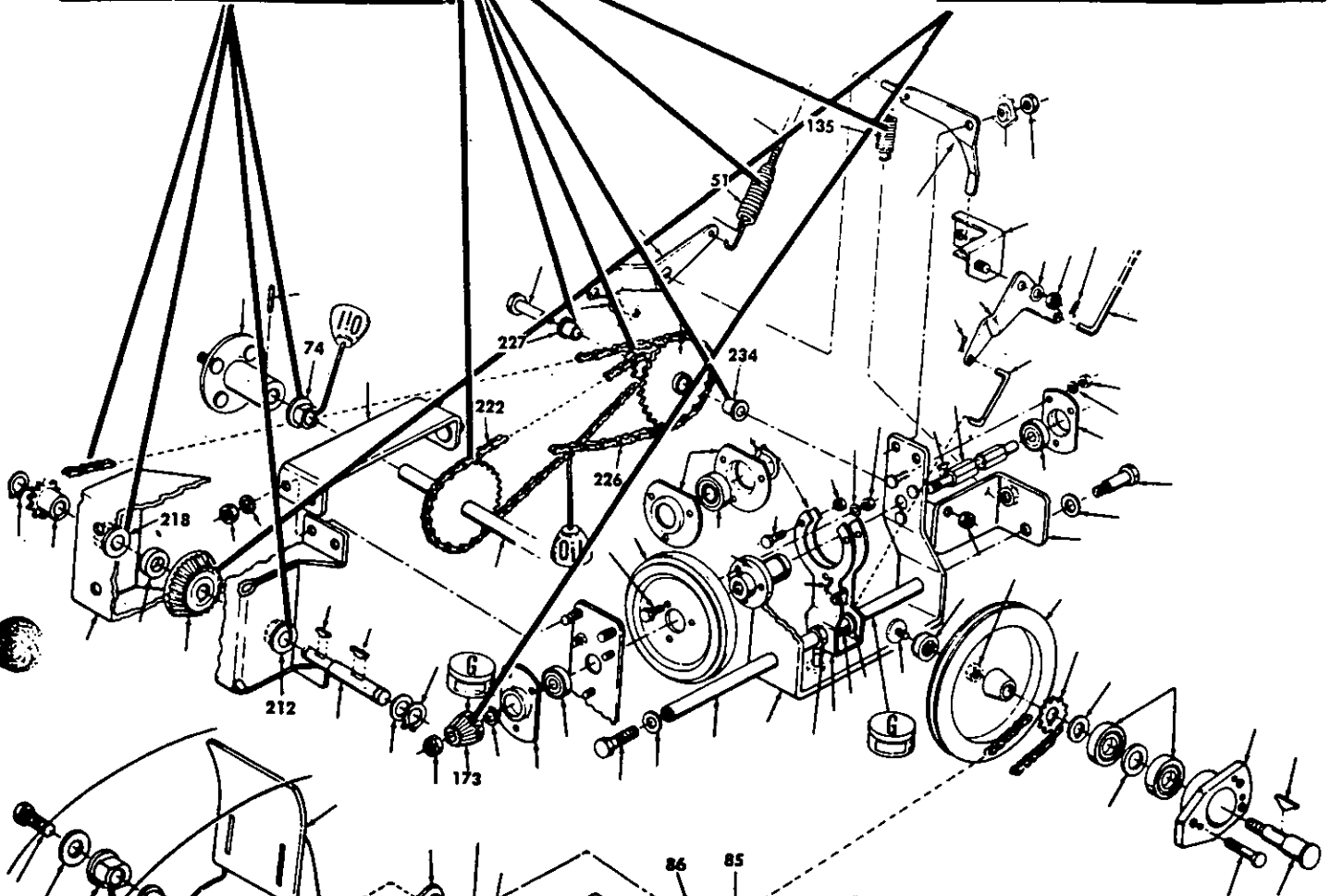
Lubricate With a Few Drops of Light Oil. (Ref. Nos. 115, 132, 119, 122, 85, 88 and 74).



# LUBRICATION POINTS

Lubricate With a Few Drops of Light Oil (Ref. Nos. 214, 226, 212, 74, 222, 227, 234, 51 and 135).

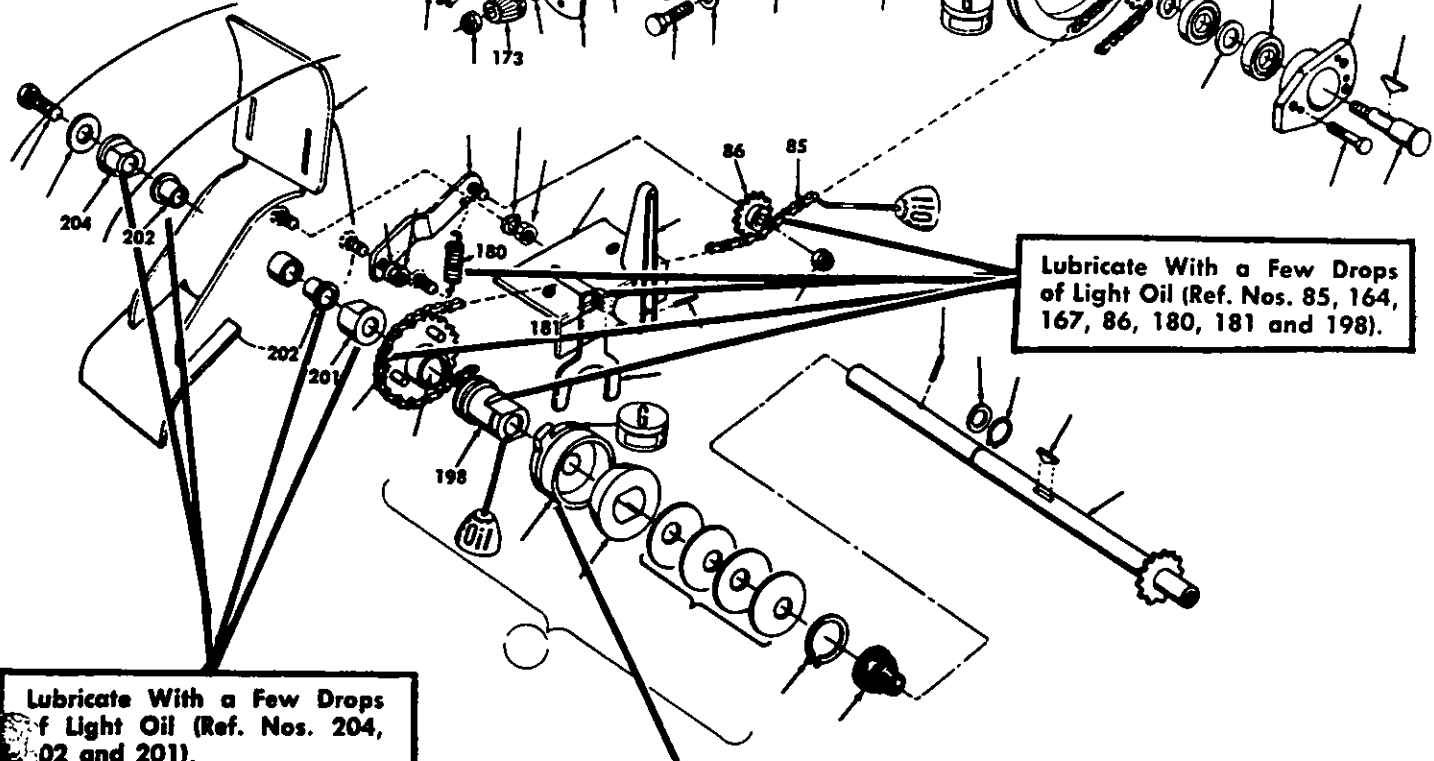
Lubricate With General Purpose Grease (Ref. Nos. 213 and 173).



Lubricate With a Few Drops of Light Oil (Ref. Nos. 85, 164, 167, 86, 180, 181 and 198).

Lubricate With a Few Drops of Light Oil (Ref. Nos. 204, 202 and 201).

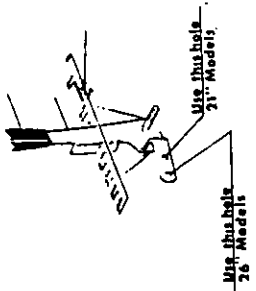
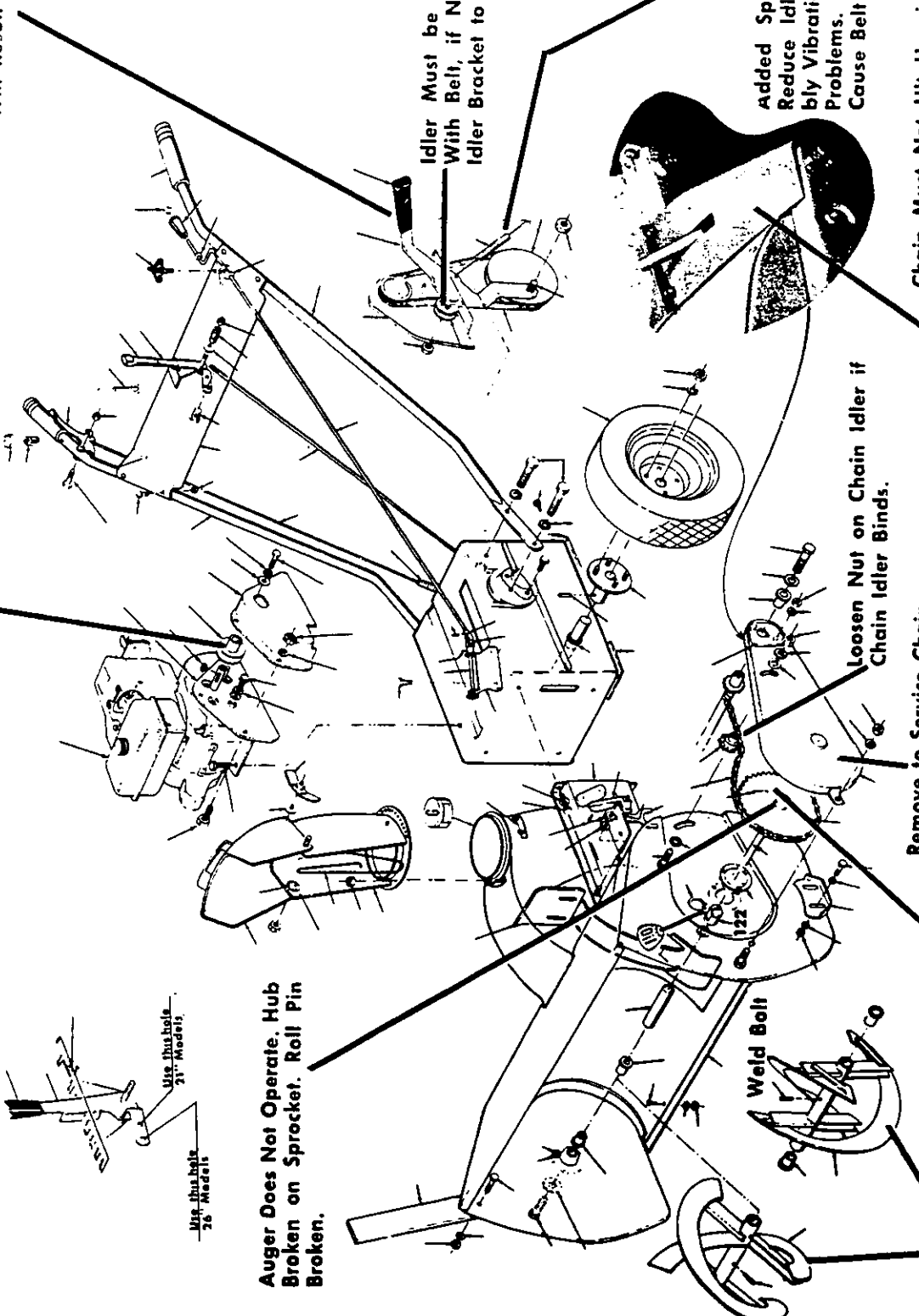
Lubricate With General Purpose Grease (Ref. No. 197).



**TROUBLE SHOOTING**

**Defective Engine Pulley or Misaligned Engine Pulley Causes Belt Failure.**

**Do Not Pry Down on Engaging Lever. Excessive Leverage Will Cause Damage to Idler Bracket. Assembly and Misalignment of Idler Pulley. This Will Result in Belt Damage.**



**Auger Does Not Operate. Hub Broken on Sprocket. Roll Pin Broken.**

**Idler Must be in Alignment With Belt, if Not. Straighten Idler Bracket to Correct.**

**Added Spring Pressure Will Reduce Idler Bracket Assembly Vibration and Reduce Belt Problems. Belt "Slap" Can Cause Belt to Break.**

**Chain Must Not Hit Housing While Operating. If Chain Hits Flange, File Clearance. Add Spring Pressure on Idlers to Reduce "Slap" in Chain.**

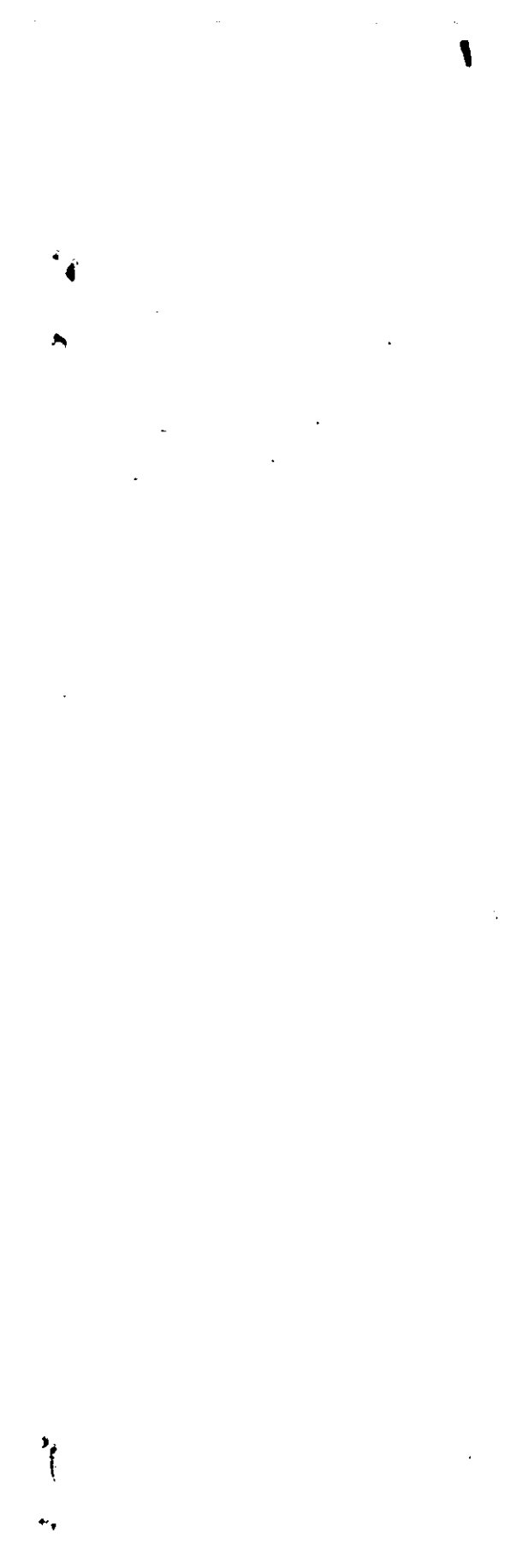
**Loosen Nut on Chain Idler if Chain Idler Binds.**

**Remove to Service Chain.**

**Weld Bolt**

**This ROLL PIN Referred to as Shear Pin by Many Users.**

**If Augers Hits Heads of Bolts in Housing, Bend Tips of Auger to Clear.**



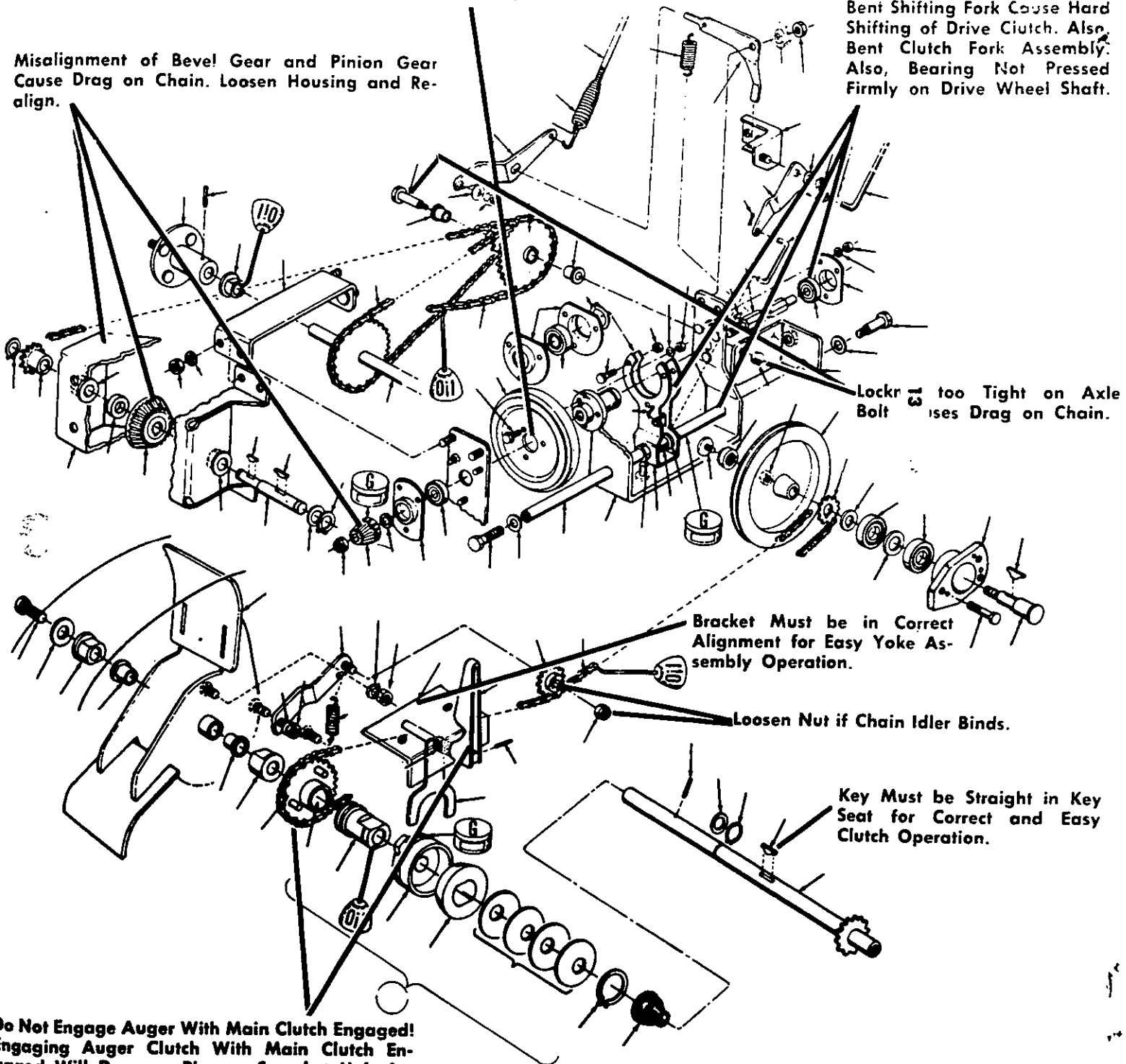
**TROUBLE SHOOTING**

Remove Frame Cover 5067 to Service Chains.

Unit Will Not Propell With Damaged Friction Wheel.

Misalignment of Bevel Gear and Pinion Gear Cause Drag on Chain. Loosen Housing and Re-align.

Bent Shifting Fork Cause Hard Shifting of Drive Clutch. Also, Bent Clutch Fork Assembly. Also, Bearing Not Pressed Firmly on Drive Wheel Shaft.



Lockr too Tight on Axle Bolt Causes Drag on Chain.

Bracket Must be in Correct Alignment for Easy Yoke Assembly Operation.

Loosen Nut if Chain Idler Binds.

Key Must be Straight in Key Seat for Correct and Easy Clutch Operation.

**Do Not Engage Auger With Main Clutch Engaged! Engaging Auger Clutch With Main Clutch Engaged Will Damage Pins on Sprocket Hub Assembly. Damaged Pins Cause Hard Auger Clutch Engagement and Even AUGER CLUTCH FAILURE.**

**Failure of the "V" Belt to Trap Away From the Engine Pulley When Main Clutch is Disengaged Will Also Cause Damage to Sprocket Hub Assembly When Auger Clutch is Engaged.**