



SERVICE PARTS LIST

BUL.54-06-0100

1/4" PISTOL DRILL

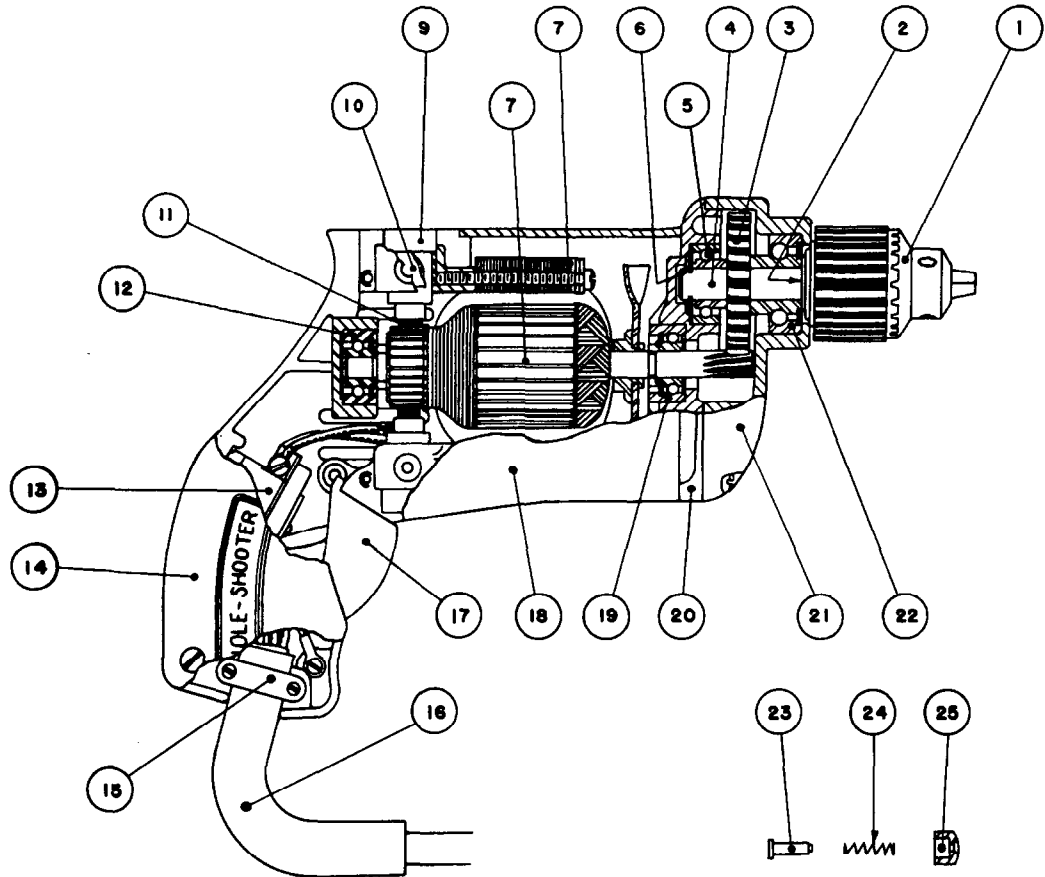
REVISED BUL 672-1 DATE FEB. '68

Model No. 250

Starting Serial No. 72-1001

WIRING INSTR.

Both Model and Serial No. must be furnished to obtain correct parts.



ILLUSTRATED PARTS

Item	Part No.	Name of Part	Item	Part No.	Name of Part
1	1/4"	Chuck	14	3B1-1	Handle Cover
2	25W8-1	Chuck Washer	15	8B1-3	Cord Clamp
3	25W-11	Spindle Gear	16	25W-28	Cord Protector Tube
4	25W-8	Spindle	17	3B1-2	Switch Trigger
5	7057	Spindle Ball Bearing (rear)	18	25W-1	Motor Housing
6	5137 Tru-Arc	Spindle Retaining Ring	19		See Item 12
7	25W-700	Field Assembly	20	25W-2	Diaphragm
8	25W-600	Armature Assembly	21	25W-3	Gear Case
9	8B-320	Brush Holder Assembly	22	7058	Spindle Ball Bearing (Front)
10	8B-33	Brush Holder Bushing	23	3B15-1	Trigger Lock Shaft
11	8B-370	Carbon Brush Assembly	24	3A15-4	Trigger Lock Spring
12	WC8037	Armature Ball Brg. Front & Rear	25	3A15-2	Trigger Lock Button
13	CH3300	Switch			

MISCELLANEOUS PARTS NOT SHOWN

Size or Part No.	Description of Part	Quantity	Size or Part No.	Description of Part	Quantity
#201	Woodruff Key (Spindle)	(1)	#8-32x1/2" Fil. Hd.	Cord Clamp Screws	(2)
#25W-23	Switch Mounting Bracket	(1)	#6-32x1/4" (Brass)	Rd. Hd. Ground Screws	(2)
3A-40	Brush Retaining Caps	(2)	#8-32x1/2" Fil. Hd.	Diaphragm Screws	(2)
#4-36x3/16 Rd. Hd.	Switch Bracket Mounting Screws	(2)	#8-32x7/8" Fil. Hd.	Gear Case Screws	(4)
#6-32x5/16 Fil. Hd.	Sem. Switch Mounting Screw	(1)	#3-48x3/16" Rd. Hd.	Name Plate Screws	(2)
#10-32x1/4" Hd. less	Slotted Brush Holder Screws	(2)	250	Name Plate	(1)
#8-32x3/4" Fil. Hd.	Handle Cover Screws	(3)	1/4"	Chuck Key	(1)
SJ16-3	Cord (3-wire)	per foot	#6-32x1-1/2" Fil. Hd.	Field Screws	(2)
Two Prong	Attachment Plug				