

# **User's Guide**

**Windows CE 5.0 Version**

**for FUTRO A2xx Series**

**Management by Scout Enterprise**

**Build # 5**

---

**August 2007**

---

©2007 by UniCon Software GmbH. All rights reserved

Information in this document is subject to change without notice. No part of this document may be reproduced or transmitted in any form or by any means, electronic or mechanical, for any purpose, without the express consent of UniCon Software GmbH.

Microsoft Windows CE is a registered trademark of Microsoft Corporation in the United States and/or other countries.

Ericom and PowerTerm are registered trademarks of Ericom Software in the United States and/or other countries.

All other Trade Names referred to are the Servicemark, Trademark or Registered Trademark of the respective manufacturers.

Citrix, Independent Computing Architecture (ICA), Program Neighborhood, MetaFrame, and MetaFrame XP are registered trademarks or trademarks of Citrix Systems, Inc. in the United States and other countries.

The end user takes full responsibility for his or her actions. Neither UniCon Software GmbH nor its partners assume liability for any errors or damage resulting from the information contained herein.

# Contents

1	About This Guide.....	0
1.1	Keyboard Shortcuts.....	0
1.2	Hotkeys.....	0
2	First Contact Wizard.....	1
3	Terminal Connection Manager.....	5
4	Terminal Properties.....	7
4.1	General.....	7
4.2	Display.....	8
4.3	Diagnosis.....	9
4.4	Control Panel.....	10
4.4.1	Internet Options.....	10
4.4.2	Printers.....	13
4.4.3	ThinPrint Settings.....	15
4.4.4	Keyboard.....	17
4.4.5	System.....	17
4.4.5.1	Firmware Update.....	17
4.4.6	Display.....	19
4.4.7	Mouse.....	19
4.4.8	Volume and Sounds.....	20
4.4.9	Date/Time.....	20
4.4.10	Regional Settings.....	20
4.4.11	VNC Settings.....	21
4.4.12	Auto Shutdown.....	21
4.4.13	USB Storage Management.....	21
4.4.14	Touch Setup.....	21
4.4.15	Network Files.....	22
4.4.16	Global ICA Client Settings.....	22
4.4.17	ICA Options.....	24
4.4.18	Network and Dial-Up Connections.....	25
4.4.19	LPD Settings.....	26
4.4.20	Shell Settings.....	27
4.4.21	Licenses.....	28
4.4.21.1	License Activation.....	28
4.4.22	Security Management.....	29
5	Configuration of Applications.....	30
5.1	Add New Application – Microsoft Remote Desktop Client.....	30
5.1.1	WTS Connection Wizard.....	31
5.2	Add New Application - Media Player.....	33
5.3	Add New Application - Internet Explorer.....	33
5.4	Edit Connections.....	34
5.4.1	Edit an RDP Application.....	34
6	Standard Shell.....	36
7	Index.....	38

## Table of Figures

Figure 1: Windows Thin Client Setup Wizard – Management and keyboard layout .....	1
Figure 2: Windows Thin Client Setup Wizard – Management address .....	2
Figure 3 Windows Thin Client Setup Wizard – Group from Manager .....	2
Figure 4 Windows Thin Client Setup Wizard – Completed (managed by Scout Enterprise) .....	3
Figure 5: Windows Thin Client Setup Wizard – Terminal Name .....	3
Figure 6: Windows Thin Client Setup Wizard – Desktop Area and Refresh Frequency .....	4
Figure 7: Windows Thin Client Setup Wizard – Control Panel .....	4
Figure 8: Configure tab, Add new application .....	5
Figure 9: Configure tab, Define application properties .....	6
Figure 10: Terminal Properties– General tab .....	7
Figure 11: Terminal Properties– Display tab .....	8
Figure 12: Terminal Properties– Diagnosis tab with Ping window .....	9
Figure 13: Terminal Properties– Control Panel .....	10
Figure 14: Control Panel – Internet Options - General .....	10
Figure 15: Internet Options – Connection .....	11
Figure 16: Internet Options – Security .....	11
Figure 17: Internet Options – Privacy .....	11
Figure 18: Internet Options – Advanced .....	12
Figure 19: Internet Options – Popups .....	12
Figure 20: Control Panel - Printers .....	13
Figure 21: Control Panel – Printer Models .....	13
Figure 22: Control Panel – Printer Name .....	14
Figure 23: ThinPrint Client CE – Setup .....	15
Figure 24: ThinPrint Client CE - Assignment .....	15
Figure 25: ThinPrint Client CE - Advanced .....	16
Figure 26: Control panel – Keyboard Properties .....	17
Figure 27: System Properties - Firmware .....	18
Figure 28 System Properties - Firmware - Update Protocol .....	18
Figure 29: Display Properties .....	19
Figure 30: Date/Time Properties .....	20
Figure 31: Regional Settings .....	20
Figure 32: VNC Settings .....	21
Figure 33: VNC Settings – Query on connection .....	21
Figure 34: Network File Mapping .....	22
Figure 35: Global ICA Client Settings – Keyboard Shortcuts .....	22
Figure 36: Global ICA Client Settings – Preferences .....	23
Figure 37: Global ICA Client Settings – Server Location .....	23
Figure 38: Global ICA Client Settings – Firewall Settings .....	24
Figure 39: ICA Options .....	24
Figure 40: Network Connection - IP Address .....	25
Figure 41: Network Connection – Name Servers .....	25
Figure 42: Network Connection – Link speed .....	26
Figure 43 Make new connection .....	26
Figure 44: LPD Server Settings .....	27
Figure 45: Shell Settings .....	27

Figure 46:Licenses .....	28
Figure 47:Device Password.....	29
Figure 48:Security Management .....	29
Figure 49 Terminal Connection Manager – Configuration – Add new application.....	30
Figure 50 WTS Connection Wizard – Step 1.....	31
Figure 51 WTS Connection Wizard – Step 2.....	31
Figure 52 WTS Connection Wizard – Step 3.....	32
Figure 53 WTS Connection Wizard – Step 4.....	32
Figure 54 Configuration – Add New Application – Media Player.....	33
Figure 55 Configuration – Add New Application – Microsoft Internet Explorer .....	33
Figure 56 Edit Connection – General tab .....	34
Figure 57 Edit Connection – Local Resources tab .....	35
Figure 58 Edit Connection – Programs tab .....	35
Figure 59 Edit Connection – Experience tab.....	36
Figure 60 Programs – Connections.....	36
Figure 61 Settings.....	37
Figure 62 Run .....	37
Figure 63 Shutdown.....	37

# 1 About This Guide

This documentation presents step-by-step directions to run the Windows CE Thin Client. For your convenience there are a few remarks about handling the dialog boxes:

The dialog boxes are equipped with the buttons **OK** and  in the upper right corner. To apply / save modifications you have to click **OK**. Alternatively press **ENTER** which both saves the modifications and closes the dialog at the same time. Click on  only or press ESC to close the dialog without modifications to apply.

## 1.1 Keyboard Shortcuts

In general, the Windows keyboard shortcuts can be used, such as:

CTRL+TAB	Move forward through tabs.
CTRL+SHIFT+TAB	Move backward through tabs.
SPACEBAR	Select or clear the check box if the active option is a check box.
ENTER	Carry out the command for the active option or button, alternative for the click on <b>OK</b> and <input type="checkbox"/> .
ESC	Cancel the current task resp. close the dialog box without saving modifications.

## 1.2 Hotkeys

The **Task hotkey** enables you to switch between currently open applications or “tasks”.

CTRL + ALT + ↓: Left selection in the Applications bar

CTRL + ALT + ↑: Right selection in the Applications bar

The terminal password **authorization hotkey** re-enables disabled settings.

CTRL + ALT + Pos1 (HOME)

The terminal password has to be entered.

To show the Starter window (Terminal Connection Manager) on top of other windows:

CTRL + ALT + End

Holding the Shift key during boot, the device starts in VGA mode.

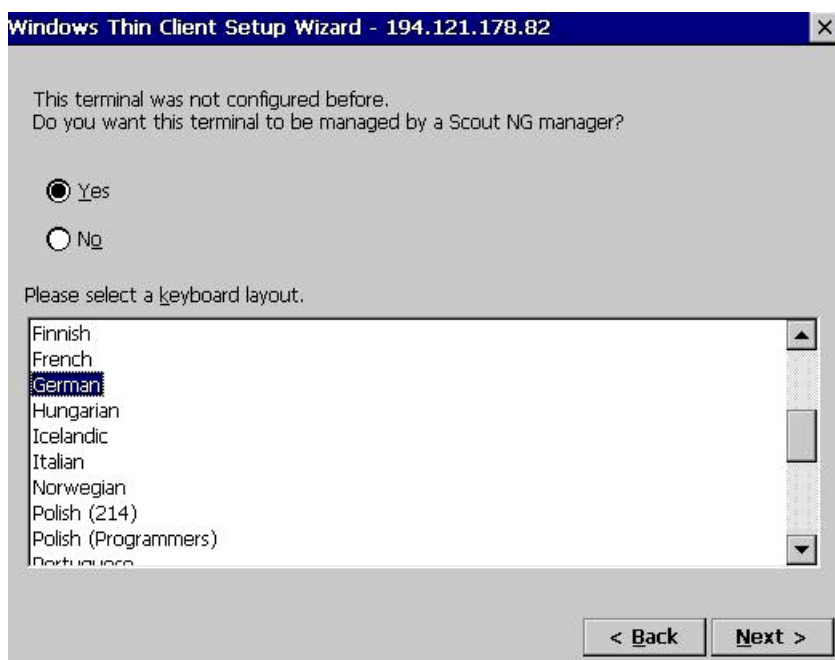
## 2 First Contact Wizard

The Windows Thin Client Setup Wizard is used for the terminal's initial setup. The wizard runs when

- the client has never been configured before or
- in the General tab the check box "Reset the terminal to factory-default property settings" is activated to restart the terminal.

There are eight dialog boxes for the Setup Wizard process. We show the most important ones.

After the Welcome dialog Click *Next* to define whether you want the terminal to be managed by a Scout Enterprise manager or not, and to select the keyboard layout.



*Figure 1: Windows Thin Client Setup Wizard – Management and keyboard layout*

If you decided to be managed by Scout Enterprise, then you have to enter the IP name or IP address of the Scout manager in the next window. In addition you can modify the terminal name and fill in three info fields (e.g. department, room, phone...).

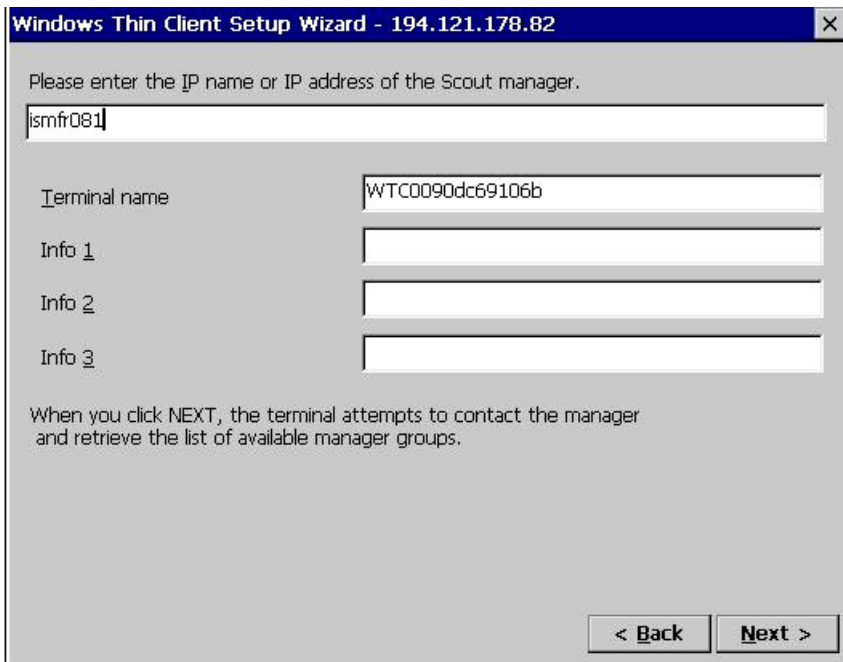


Figure 2: Windows Thin Client Setup Wizard – Management address

Click **Next** and select the group you want to register your client in:

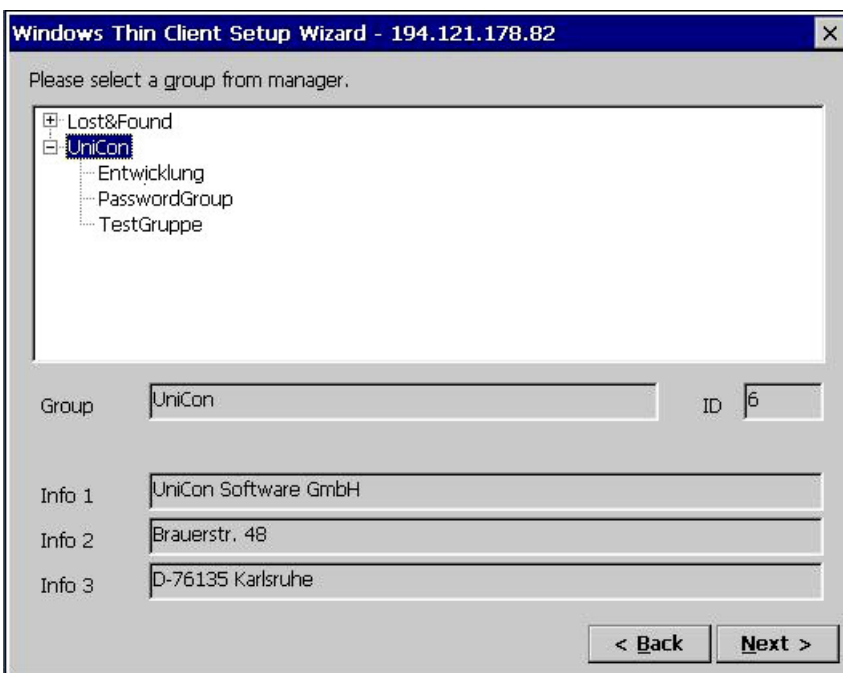


Figure 3 Windows Thin Client Setup Wizard – Group from Manager

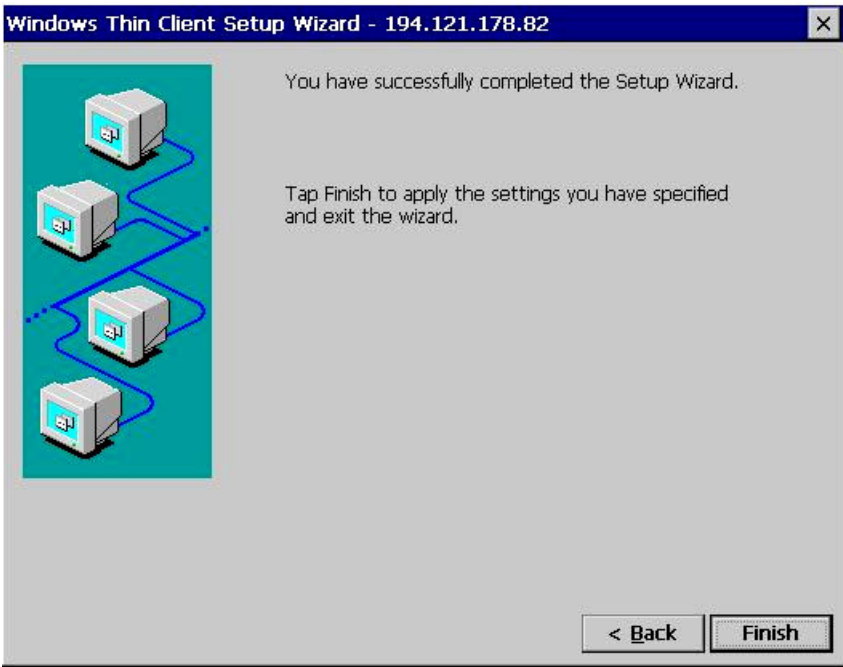


Figure 4 Windows Thin Client Setup Wizard – Completed (managed by Scout Enterprise)

Click *Finish* to apply the specified settings and exit the wizard.

If you deny to be managed, you get the option to modify the terminal name and show the network properties. The terminal name can be recognized by your server. The maximum length of the terminal name is 15 characters due to server limitation.

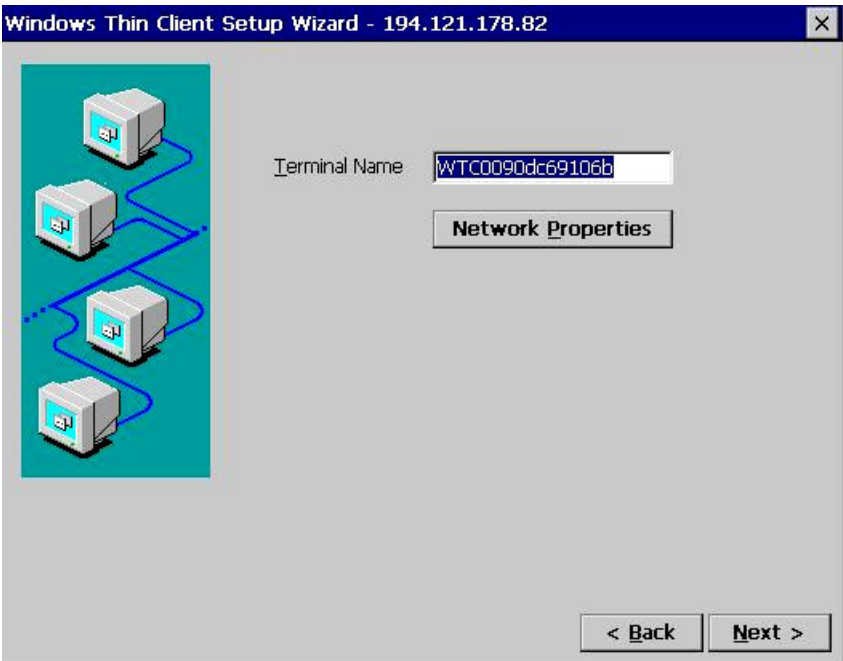


Figure 5: Windows Thin Client Setup Wizard – Terminal Name



Click *Next* to show and - if desired - modify the desktop area and refresh frequency.

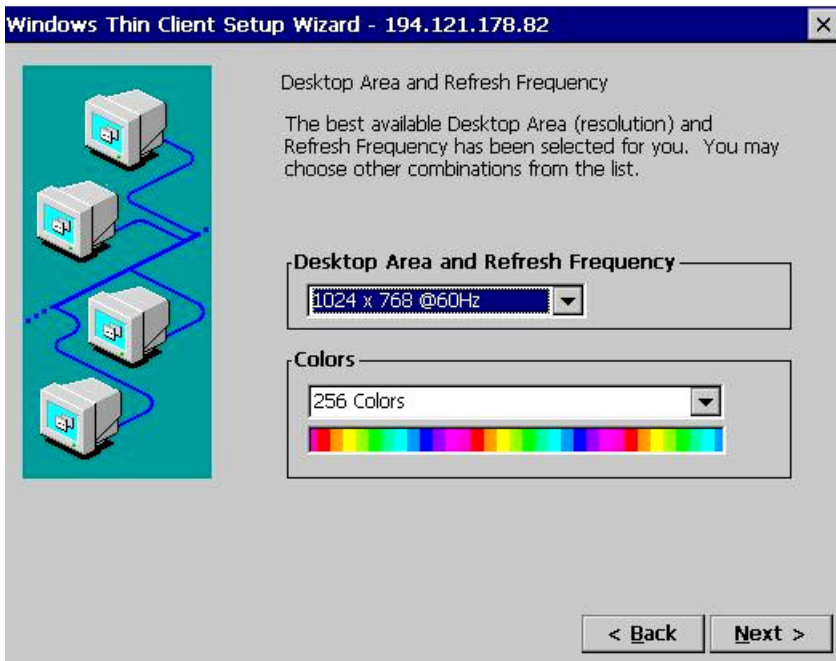


Figure 6: Windows Thin Client Setup Wizard – Desktop Area and Refresh Frequency

Click *Next* to open the control panel (see chapter 4.4 for detailed description).



Figure 7: Windows Thin Client Setup Wizard – Control Panel

### 3 Terminal Connection Manager

**Note:** When using the 'Standard Shell' you will find the connection manager by selecting Start → Programs → Connection Manager.

The Terminal Connection Manager has two tabs:

**Application:** shows the applications which have already been configured, if any, and offers you to connect to the application, to shutdown or to restart the terminal.

**Configuration:** Here you can add..., edit... or delete an application. The Properties button allows you to set an application for Autostart. This will be shown in the Startup column of the Configure tab.

Click Add... to define a new application:

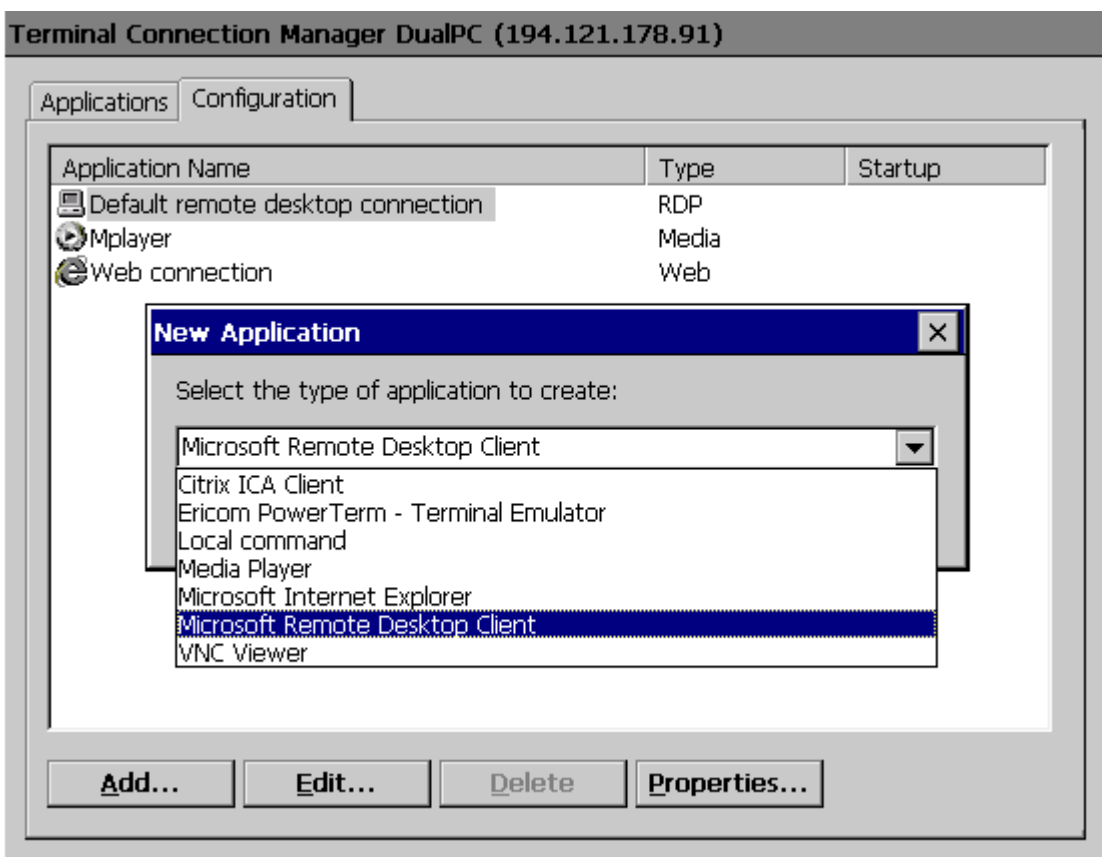


Figure 8: Configure tab, Add new application

Chapter 5.1 Add New Application – Microsoft Remote Desktop Client describes the configuration of a new application in detail.

Click **Edit...** to modify an existing application. It depends on the application which tabs are available and which settings can be modified.

Editing an RDP application is described in chapter 5.4.1 Edit an RDP Application,

Click the button **Delete** to delete the selected application. You are asked for confirmation: yes or no.

Click **Properties...** to define the application properties.



Figure 9: Configure tab, Define application properties

**Startup Options:** Here you can set an application for Autostart. This will be shown in the Startup column of the Configure tab.

**Desktop Options:** If you are using the standard shell, you can specify a desktop shortcut for an application.

## 4 Terminal Properties

### 4.1 General

Starting from the Terminal Connection Manager press <F2> to open the Terminal Properties Window with the tabs

- General
- Display
- Diagnosis
- Control Panel

**Note:** When using the 'Standard Shell' you will find the Terminal Properties Dialog (with tabs General, Display and Diagnosis) under Start → Settings → Setup Device and the Control Panel by selecting Start → Settings → Control Panel.

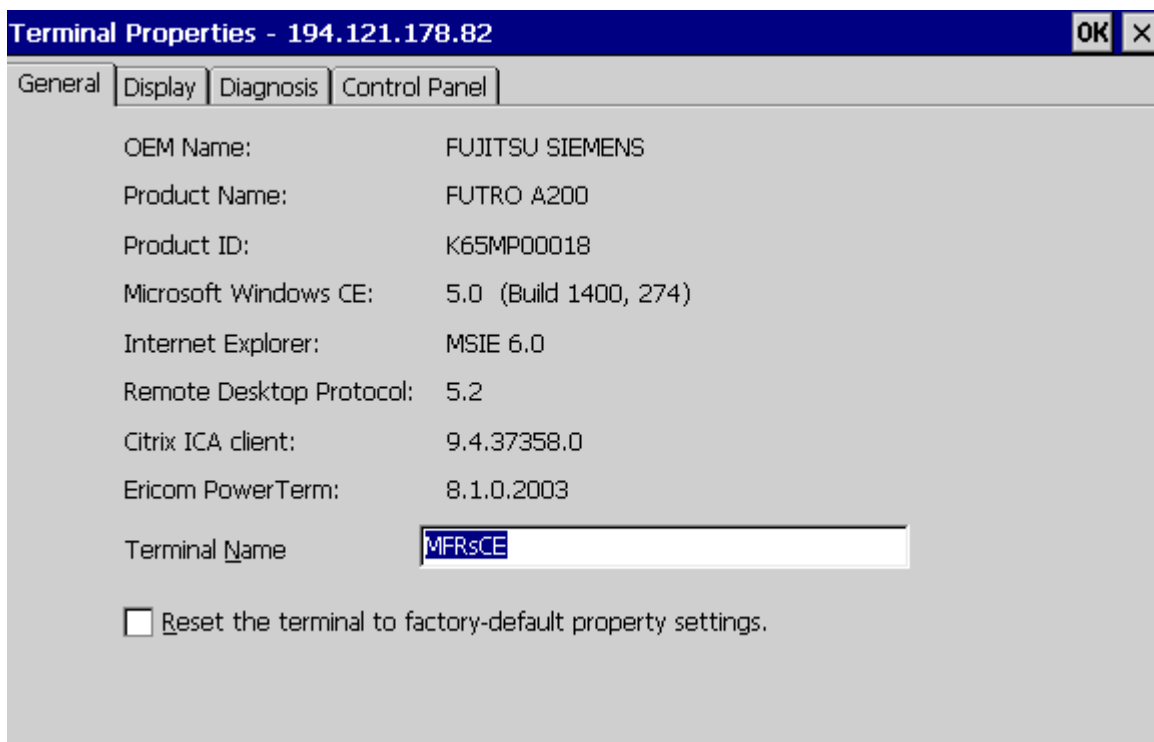


Figure 10: Terminal Properties– General tab

The General tab provides the terminal basic hardware configuration:

- OEM Name
- Product Name
- Product ID: this is an important information when you contact your supplier for technical support or free software upgrade
- Microsoft Windows CE Version
- Internet Explorer Version

- Remote Desktop Protocol Version
- Citrix ICA Client Version
- Ericom PowerTerm Version

Terminal Name: Enter the terminal name which can be recognized by your server. The maximum length of the terminal name is 15 characters due to server limitation.

**Option:** Reset the terminal to factory default property settings. Click on the check box to reset the terminal to its factory default settings.

Click OK or press ENTER for the modifications to apply and close the window or press <Esc> to cancel the current modifications and close the dialog.

## 4.2 Display

This tab offers to modify your display as to:

Desktop Area and Refresh Frequency

Colors

Screensaver

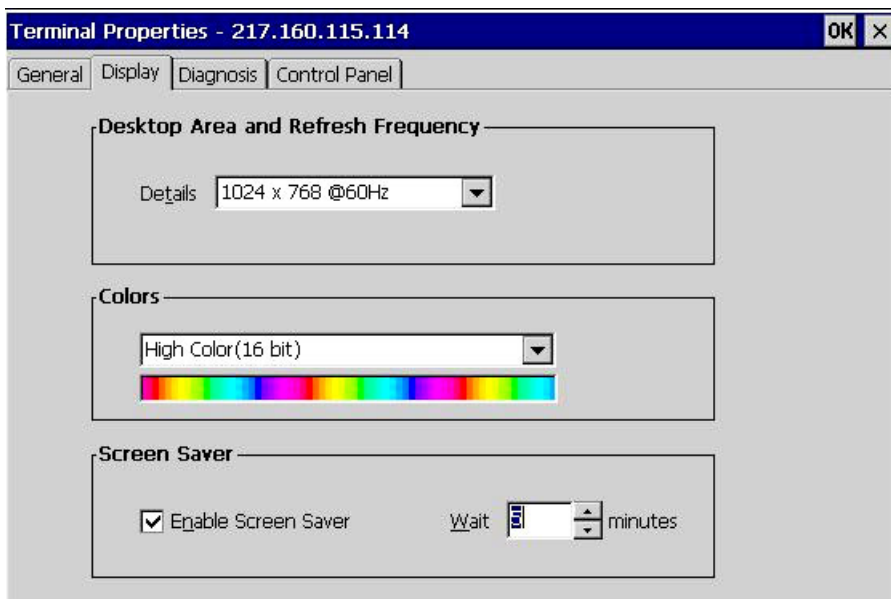


Figure 11: Terminal Properties– Display tab

### 4.3 Diagnosis

Shows IP address and other parameters, sets the debug level, shows and transfers system and log files and leads to **Console** and **Ping**

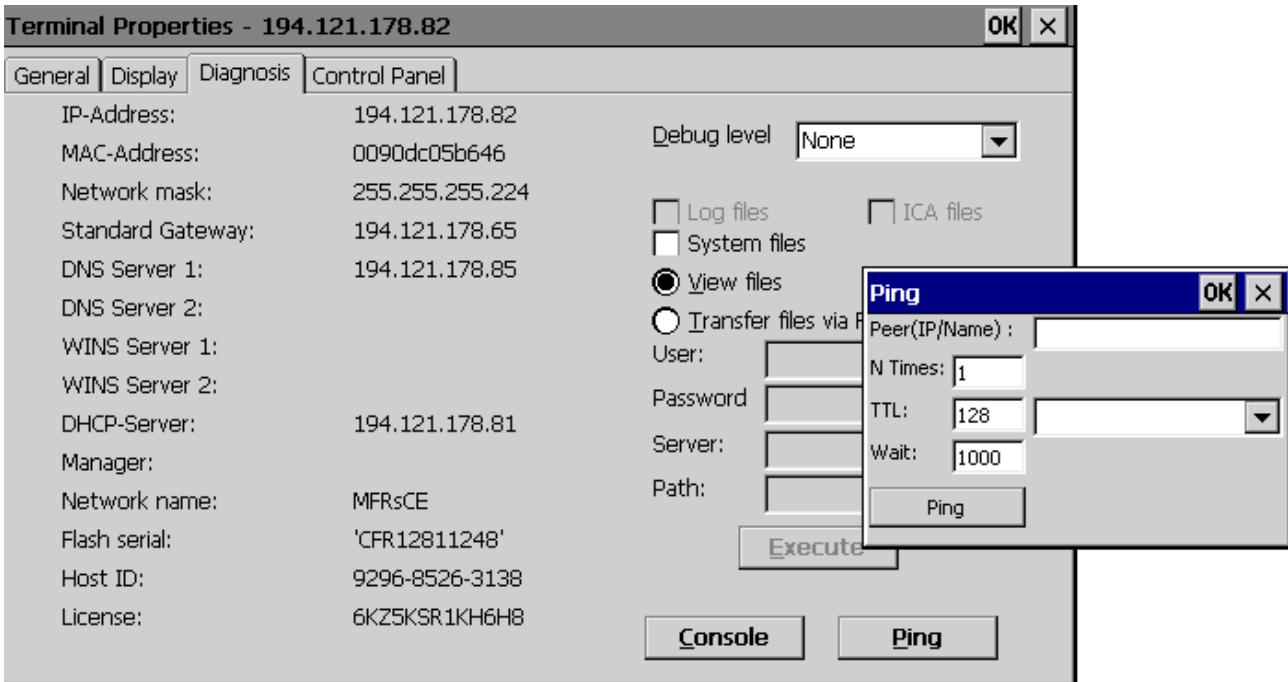


Figure 12: Terminal Properties– Diagnosis tab with Ping window

Console: offers the command prompt;      Ping: allows you to check for the connection.

## 4.4 Control Panel

This is the tab to define the terminal settings.

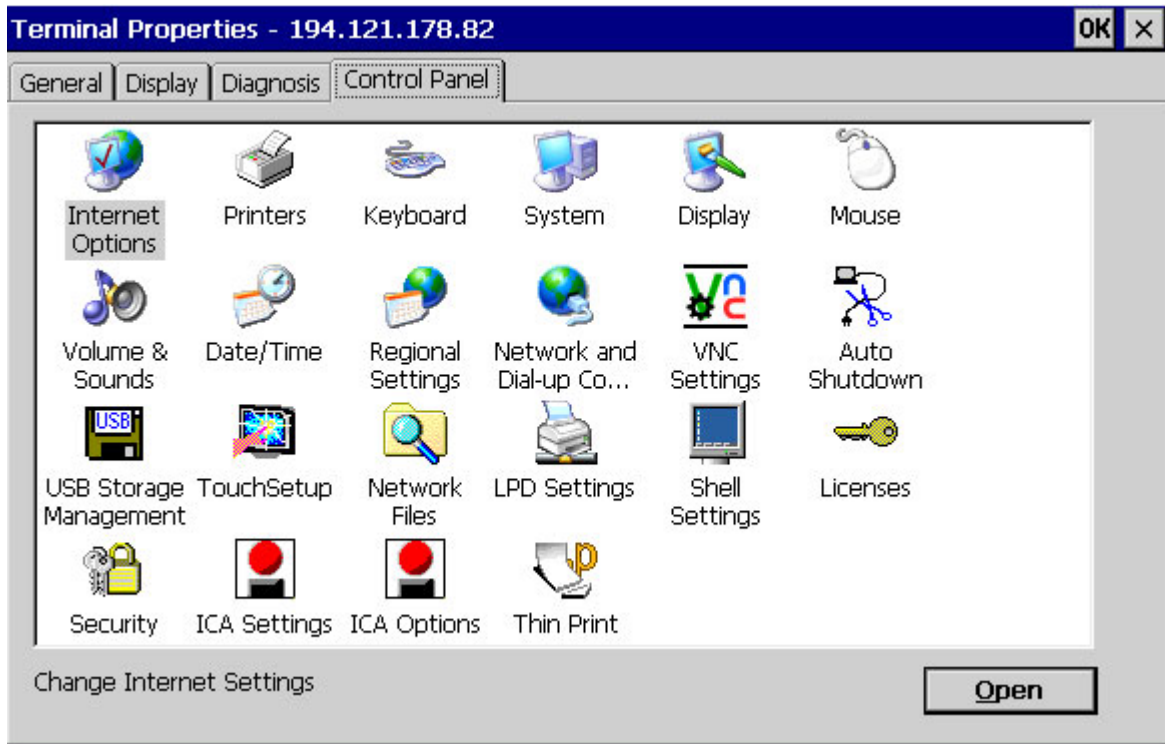


Figure 13: Terminal Properties– Control Panel

### 4.4.1 Internet Options

Change Internet Settings in the tabs:

**General:** Start Page and Search Page, Define Cache Size, Clear Cache, Clear History

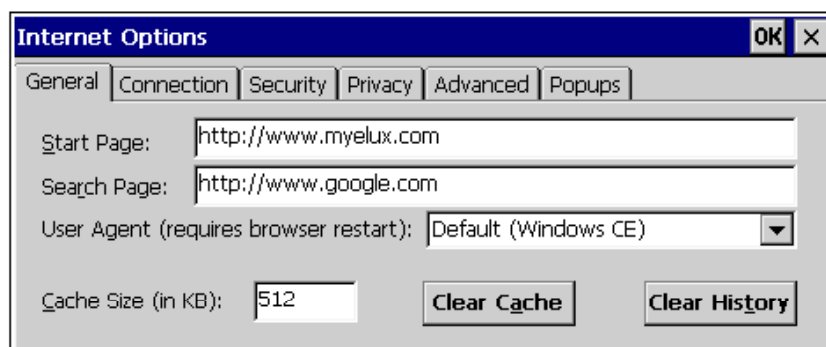


Figure 14: Control Panel – Internet Options - General

**Connection:** Enter Proxy server address if required

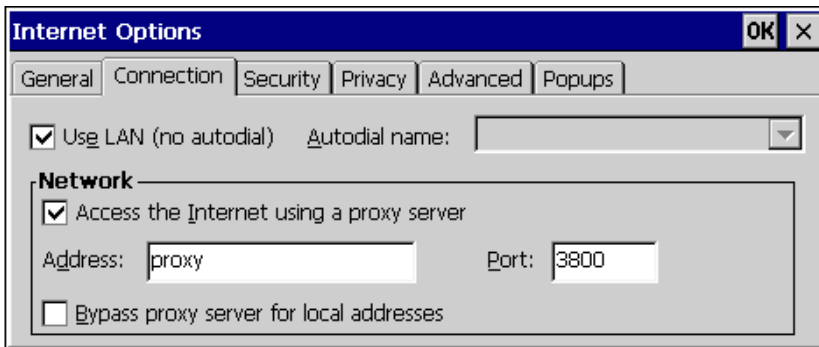


Figure 15: Internet Options – Connection

**Security:** Settings for the different zones

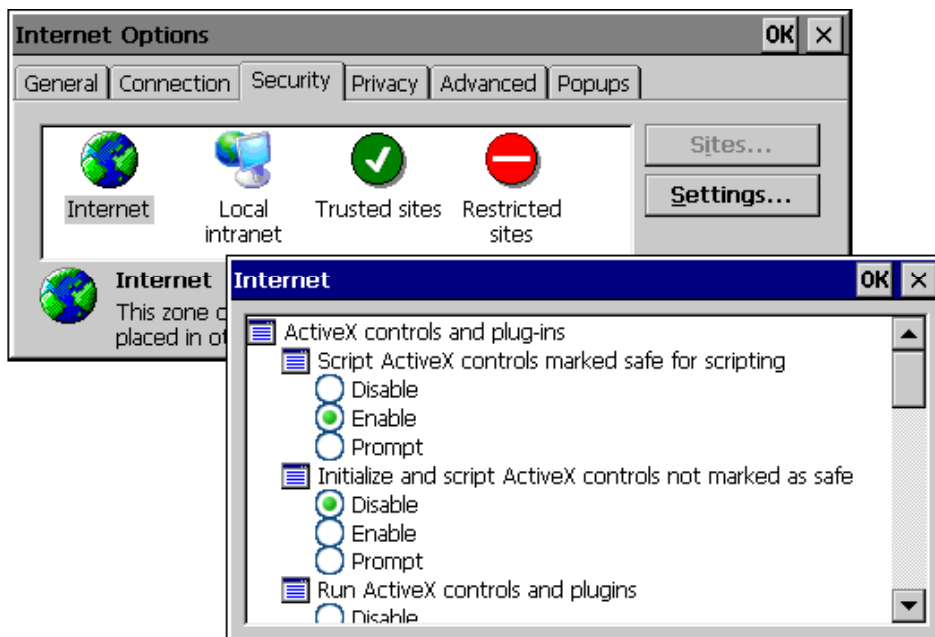


Figure 16: Internet Options – Security

**Privacy:** Allow session cookies or not

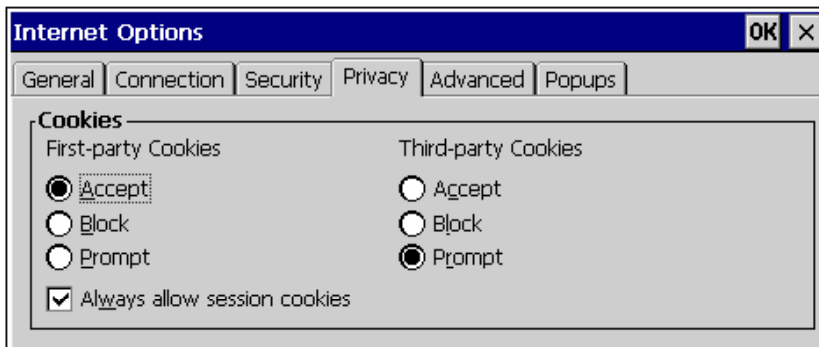
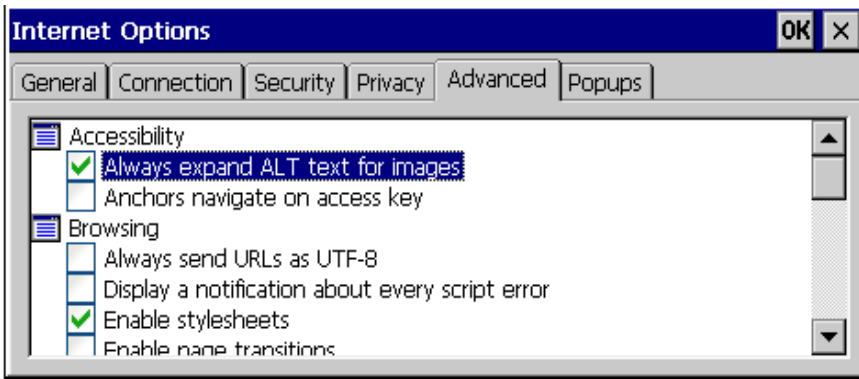


Figure 17: Internet Options – Privacy

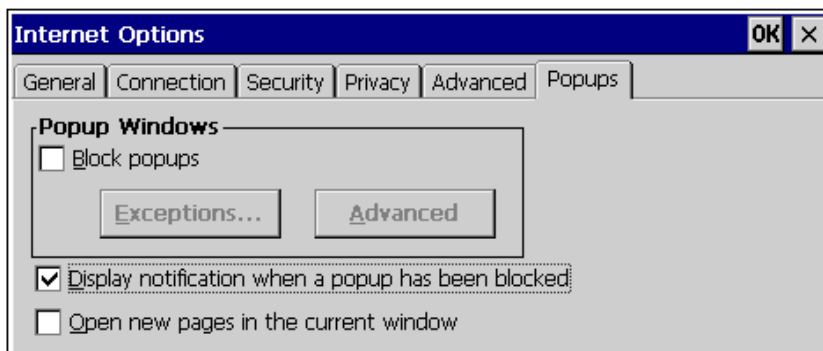




**Advanced:** Customize the options for accessibility and browsing

*Figure 18: Internet Options – Advanced*

**Popups:** Customize the behavior of popup windows



*Figure 19: Internet Options – Popups*

## 4.4.2 Printers

In the Control Panel double-click the Printers icon to open the "Add printer" dialog box. Double click on the "Add Printer" icon to open the Printer Wizard. This wizard provides four major steps to setup the printer.

### Step 1: Select the Printer Port

By default there are 3 different printer ports: COM1, LPT1, Network, for your selection. Whenever you add another printer, LPT2 will show in the port list, even if connected via USB.

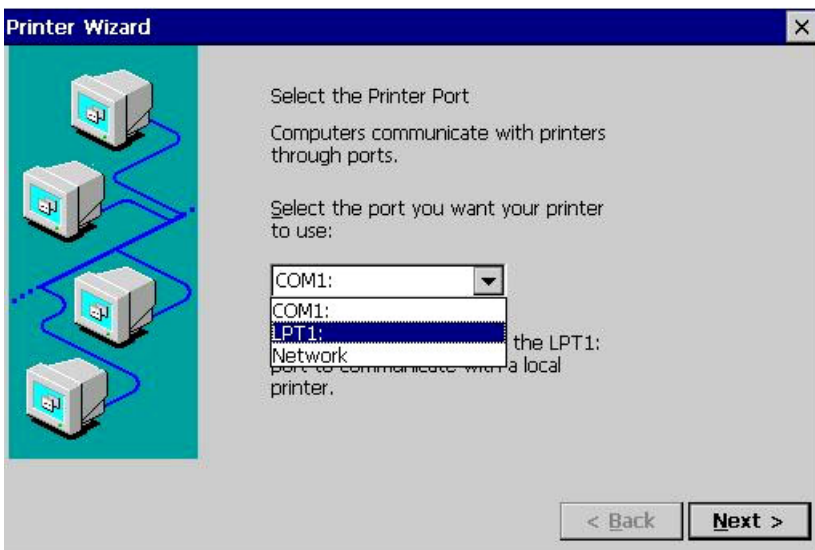


Figure 20:Control Panel - Printers

### Step 2: Select the Printer Model

Select the printer from the Manufacturers & Printers list.

Note: If your printer is not in the list, enable "User Defined" check box.

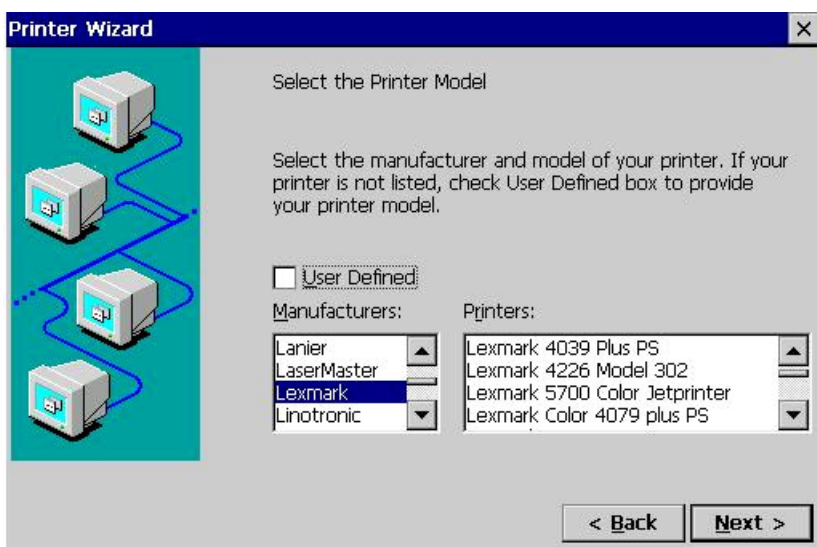


Figure 21:Control Panel – Printer Models

### Step 3: Name your Printer

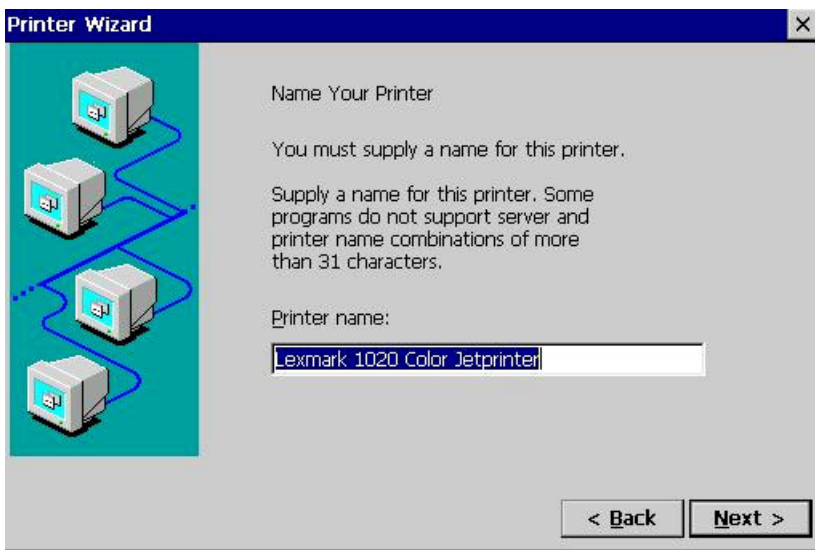


Figure 22:Control Panel – Printer Name

1. Your printer is on the list.  
The printer you select will display in the "Printer name" field.
2. Your printer is not on the list.  
If the printer is not in the list, please type the printer name which is identical with the printer name on the server.
3. You select a network printer  
If you select a network printer, please enter precisely the printer name and network path.

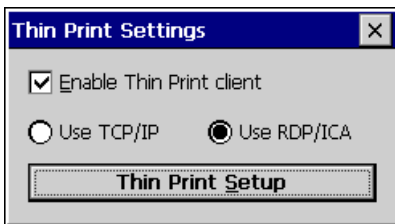
Step 4: Configure another printer, if required

Step 5: Click *Finish* to complete the Printer Setup

### 4.4.3 ThinPrint Settings

ThinPrint .print Client CE allows you to print directly from the terminal to network printers. Together with the Citrix MetaFrame application server software, this feature provides a powerful solution for remote offices and wireless LAN hotspots. With this ThinPrint Client a print job can be delivered over the Citrix ICA protocol & Microsoft RDP protocol to the device and from there directly to the network printer through TCP/IP protocol. So you do not any longer need a print server in addition to a network printer.

To enable the ThinPrint Client double-click the icon in the Control Panel opening the Thin Print Settings. Choose whether to use TCP/IP or RDP/ICA protocol.



Clicking 'Thin Print Setup' will open .print Client configuration. Fill in the adequate values in the tabs Setup, Assignment and Advanced, then you can use the ThinPrint Client after the terminal restart.

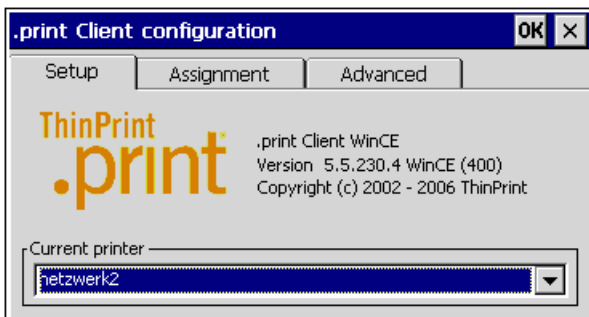


Figure 23: ThinPrint Client CE – Setup

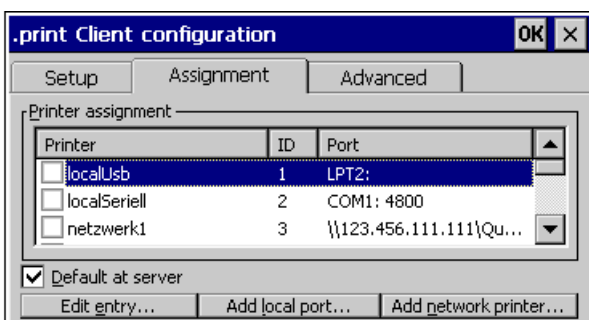


Figure 24: ThinPrint Client CE - Assignment

### Add local port...

"Add local port..." to enter the printer name and printer port in the dialog box.

### Add network printer...:

Click (shared) printers and double-click one of the listed printers. Enter the printer name and the printer's network path. A new network printer is installed by double clicking the NET0 printer icon.

Advanced settings contain Bandwidth, Port number and Device Write Timeout in sec.

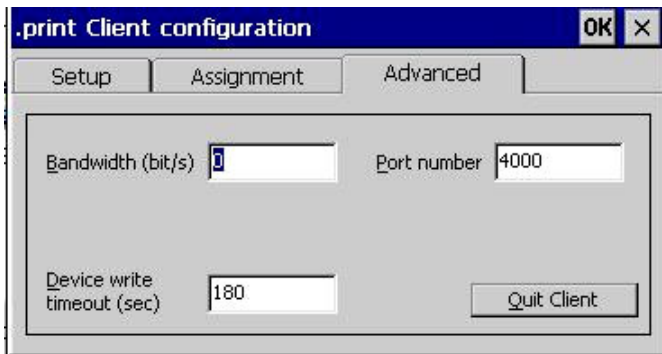


Figure 25: ThinPrint Client CE - Advanced

### Bandwidth:

Enter a bandwidth value which is the same or smaller than that set in .print Engine. If the value is larger or if Client Control is disabled at the server, server settings are applied.

Enter **0** to retain server settings.

### Port number:

Enter the port number where .print Client should receive incoming connections. Be sure that the TCP/IP port number is the same on both .print Client and server-side .print Engine. Otherwise, communication between the two .print components is impossible.

**Note:** TCP/IP Port number is of course only relevant for printing over TCP/IP. The default port number is 4000.

### Quit Client:

Click "**Quit Client**" to exit .print Client. (.print Client must be restarted before ThinPrint .print printing resumes).

Click **OK** for all changes to **apply** without quitting .print Client. Some changes are only effective after having restarted .print Client.

Click  button to **quit** the dialog box without saving changes.

## 4.4.4 Keyboard

The **Repeat** settings for the characters can be modified.

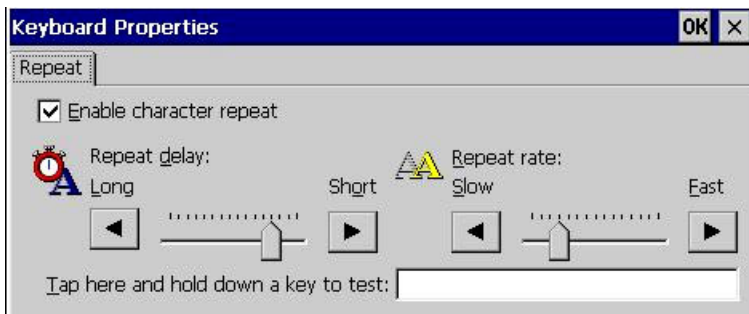


Figure 26:Control panel – Keyboard Properties

## 4.4.5 System

The system properties window is divided into five tabs:

- General
- Memory
- Device Name
- Firmware
- Copyrights

Most of them are self-explanatory, so this manual will not go into details except for the FIRMWARE tab.

### 4.4.5.1 Firmware Update

To update the terminal over the network, download an available image from the website [www.myelux.com](http://www.myelux.com) in the Download Area > Windows CE Images.

At the client you have to select the protocol and fill in some fields.

First of all select between:

- **HTTP** if the update server is an HTTP server. Enter the proxy IP address or name, and the proxy port number, if used (optional). To use Microsoft Internet Information server 6.0, you must define several new MIME types.
- **FTP** if the update server is an FTP server. Please consider that lower and upper case are crucial.

Server: Enter the IP address or name of the update server in the **Server** field.

Path: Enter the **Path** where the image file is located

User: If you selected the FTP protocol it is mandatory to enter the **user** name.

Password: If you selected the FTP protocol it is mandatory to enter the **password**.

Image: Enter the name of the new image file in the **Image** field.

Proxy: (optional) Enter proxy name or IP address if you selected HTTP Server. This field is disabled if you chose FTP.

Proxy-Port:(optional) Enter proxy port number, if used and if you selected HTTP Server. This field is disabled if you chose FTP.

You have the option to enable the check boxes "Check update on start" and "Ask user before update".

The following figures show example settings and an Update Protocol.

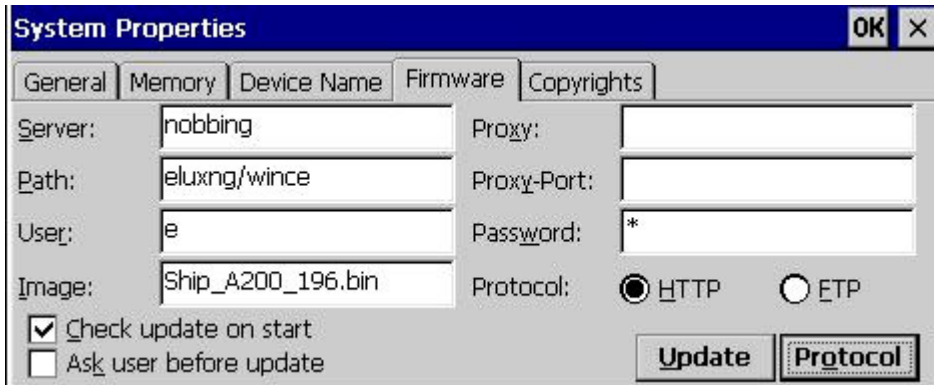


Figure 27: System Properties - Firmware



Figure 28 System Properties - Firmware - Update Protocol

## 4.4.6 Display

The Display Properties dialog allows to modify the appearance, i.e. the color scheme of the applications windows.

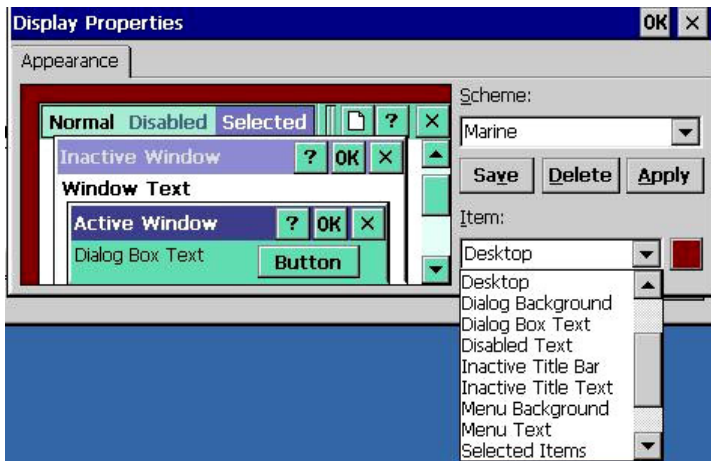
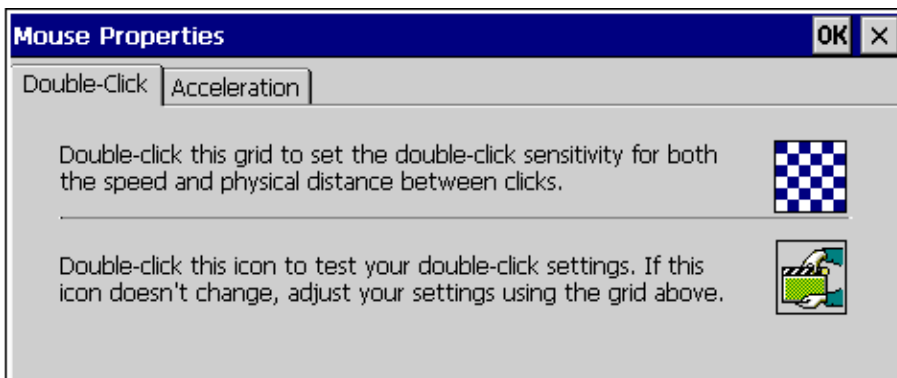
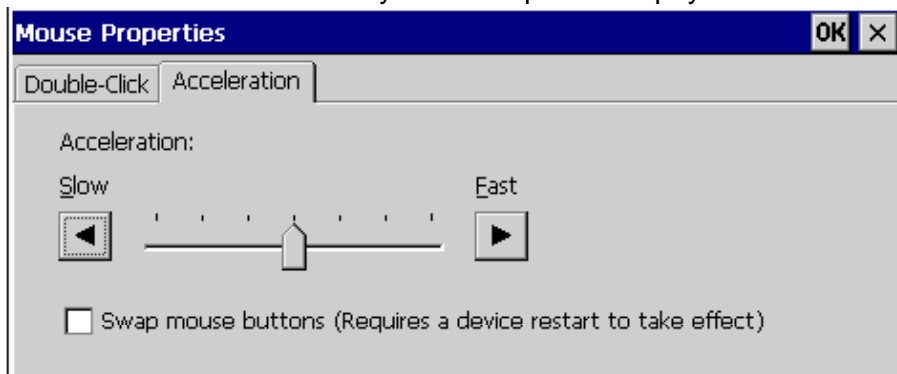


Figure 29: Display Properties

## 4.4.7 Mouse



Set the double-click sensitivity for both speed and physical distance between clicks.



Set the mouse acceleration and swap mouse buttons. Swapping mouse buttons requires a device restart to take effect.



#### 4.4.8 Volume and Sounds

Move the slide from Soft to Loud to modify the volume.

#### 4.4.9 Date/Time

This dialog allows to set the current time and the time zone as well as the option to automatically adjust the clock for daylight saving time.

Further, an SNTP Time Server may be selected or added by entering IP name or address.

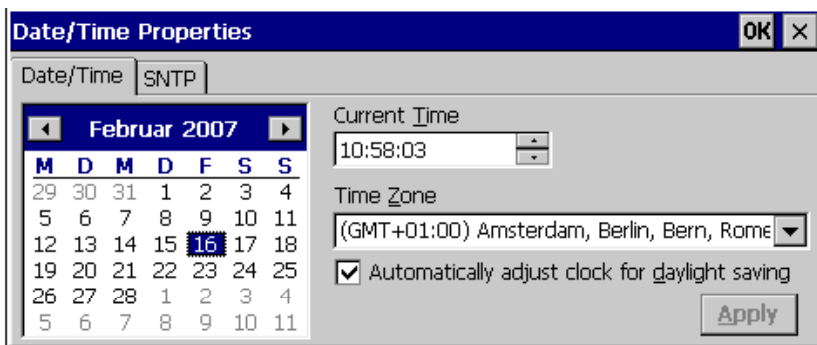


Figure 30: Date/Time Properties

#### 4.4.10 Regional Settings

- Specify and customize your **regional settings** which will affect format numbers, currency, time and dates in locally installed programs.
- The **User Interface Language** cannot be modified, it is available in English (US) only.
- Select all desired **Input Languages** from the list.

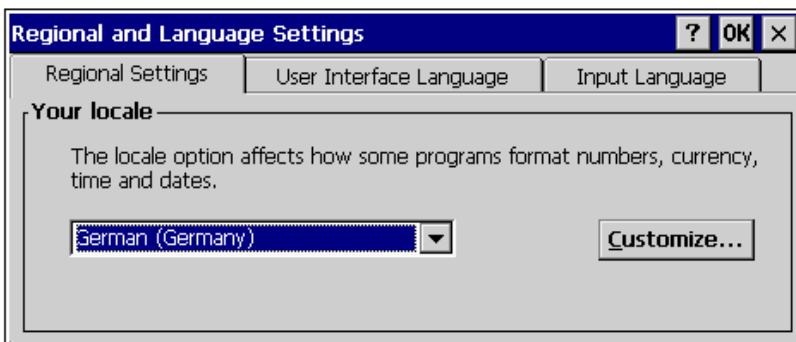


Figure 31: Regional Settings

## 4.4.11 VNC Settings

Set password requested for mirroring the terminal.

Enable the check boxes

- Launch on startup: if you wish to allow mirroring from the very start of the terminal.
- Enable remote input: to allow input from remote
- Query on connection: Request to Thin Client user

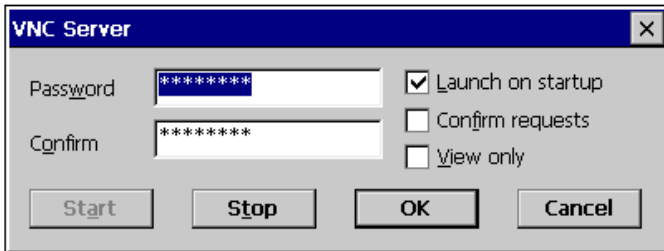


Figure 32: VNC Settings



Figure 33: VNC Settings – Query on connection

## 4.4.12 Auto Shutdown

The terminal provides automatic shutdown when all connections have been closed. It is convenient for some special applications. Factory default: Disabled

## 4.4.13 USB Storage Management

USB Storage devices include USB Hard Disk, USB Floppy, USB Flash Disk and USB CD-ROM. They can either be enabled or disabled. Factory default: Enabled.

## 4.4.14 Touch Setup

Allows to change the global ELO USB TouchScreensettings.

The "Calibrate" button will be active when the USB touch screen is connected and the "Enable Comport TouchScreen" isn't checked.

Touching the screen is equivalent to clicking and releasing the mouse button.

#### 4.4.15 Network Files

Network files can be mapped, if required, to save files from the local Internet Explorer.

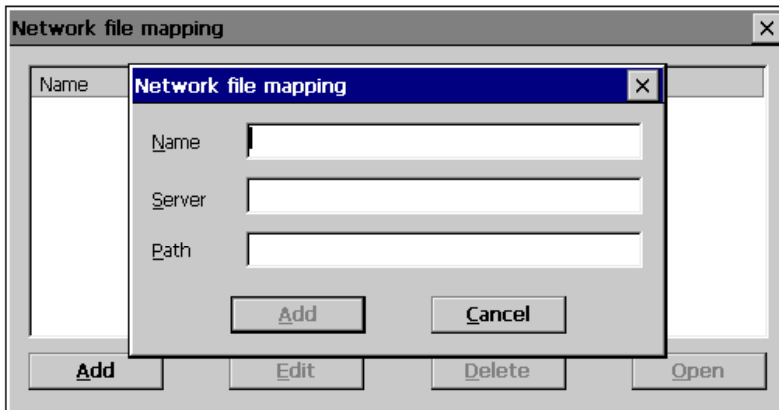


Figure 34: Network File Mapping

#### 4.4.16 Global ICA Client Settings

The four tabs to define the global ICA Client settings are described in short, for detailed information please consult the ICA WinCE Guide on <http://support.citrix.com> in the download area.

**Keyboard Shortcuts:** can be customized or disabled

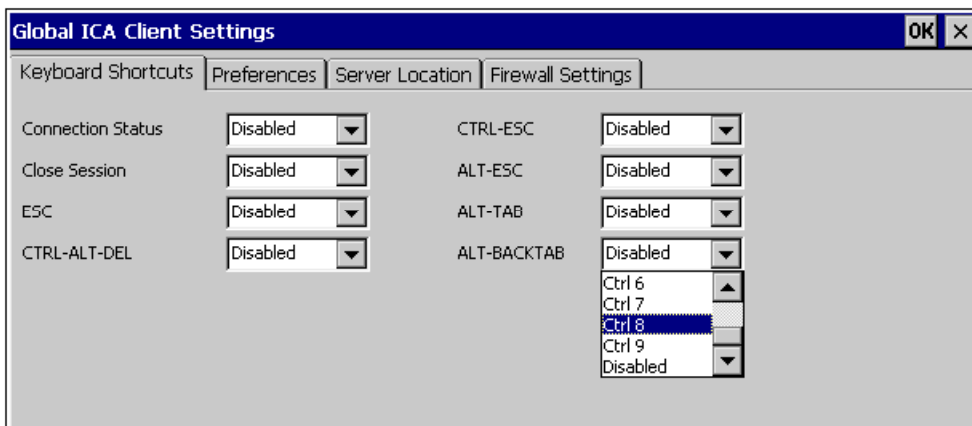


Figure 35: Global ICA Client Settings – Keyboard Shortcuts

**Preferences:**

Enter the serial number and define your default window colors.

**PNAgent:**

Option: Enable and specify server

Option: Force PNAgent on Reboot

Select from drop-down list when to apply Windows key combinations.

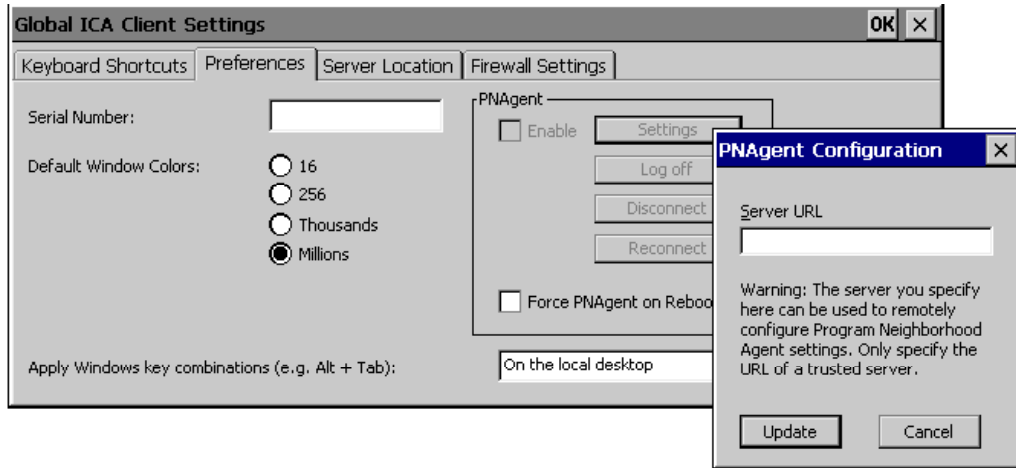


Figure 36: Global ICA Client Settings – Preferences

**Server Location:**

Either **select** a server group from the drop-down list or

**add** a new server address or

**rename** server location group.

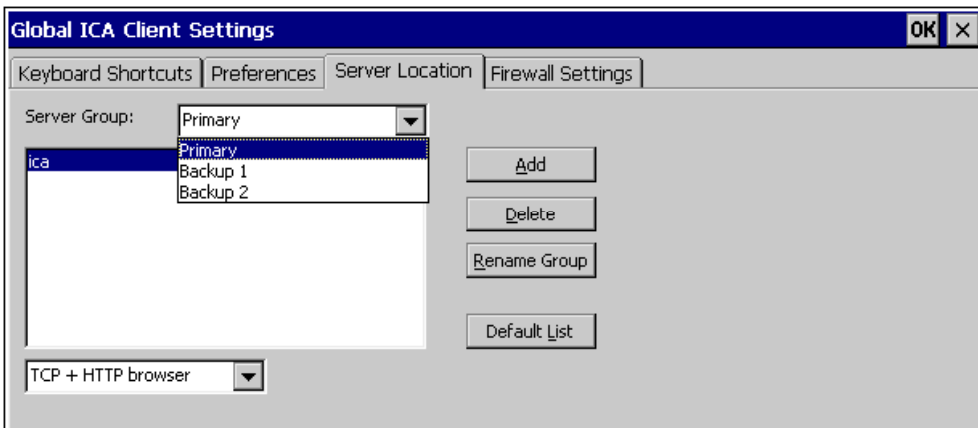


Figure 37: Global ICA Client Settings – Server Location

**Firewall Settings:** Enter proxy address if required to assure a secure connection.

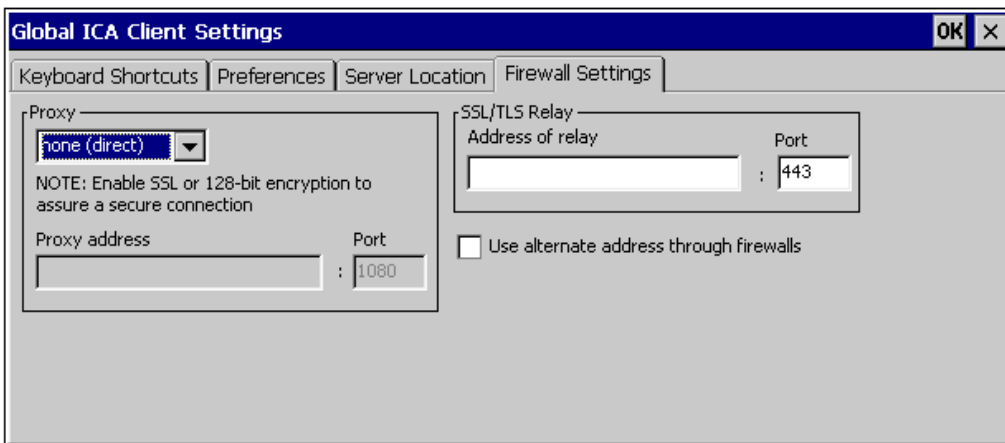


Figure 38: Global ICA Client Settings – Firewall Settings

#### 4.4.17 ICA Options

This allows to map local disk drives and modify the mouse timer settings as well as the scroll speed for ICA sessions.

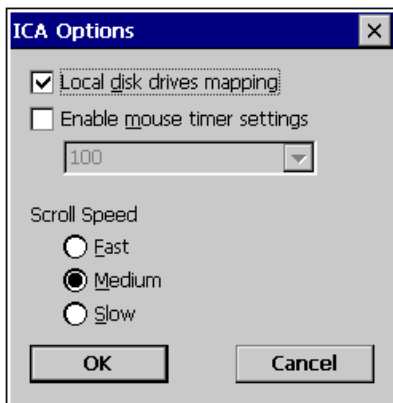


Figure 39: ICA Options

## 4.4.18 Network and Dial-Up Connections

Shows the parameters of the network card or defines a new network connection.

### 4.4.18.1 PCI-RTCNIC1

**IP Address:** This is to enter an IP address or to obtain an IP address from the DHCP server.

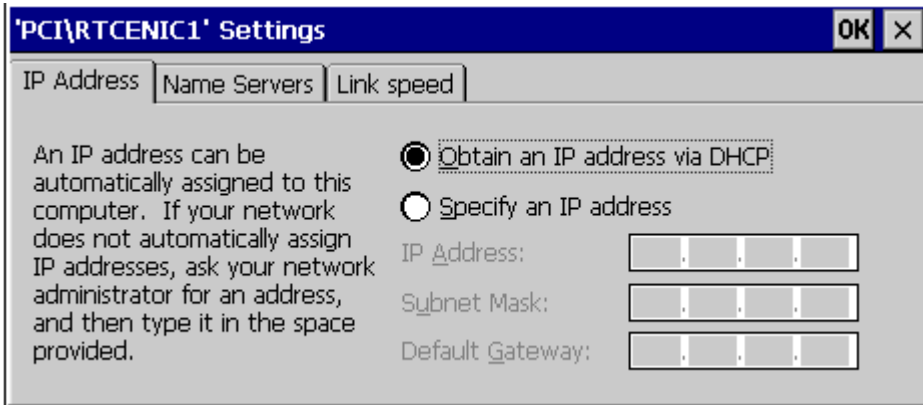


Figure 40: Network Connection - IP Address

**Name Servers:** This is to enter addresses from name servers.

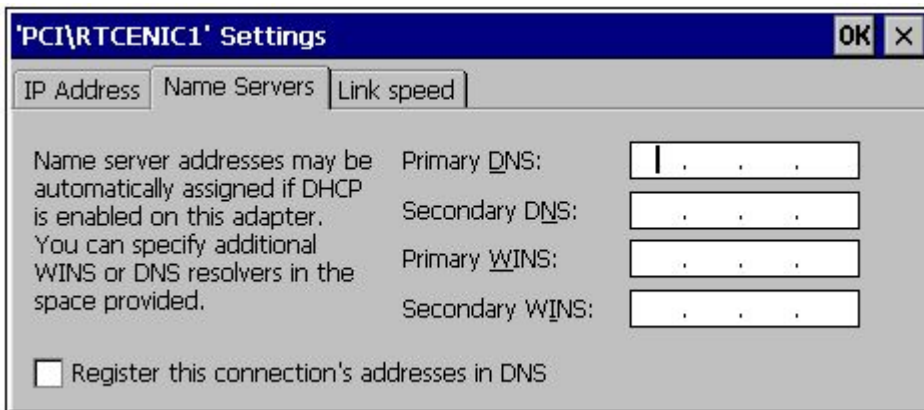


Figure 41: Network Connection – Name Servers

Link speed: The link speed can be set here. Modifications take effect after the next restart. If the speed has been 1Gbit/s before modification (setting: 1Gbit/s or Auto) and is to be reduced, then the device must be shut down and restarted. In case a required speed should not be available, the next lower speed is chosen.

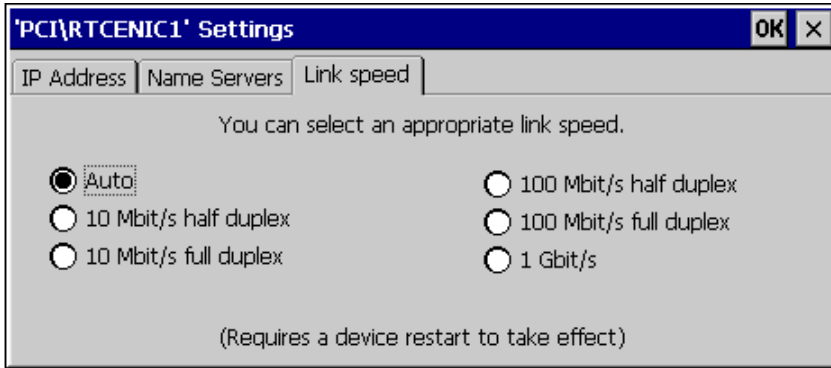


Figure 42: Network Connection – Link speed

#### 4.4.18.2 Make New Connection

A new VPN connection can be created here. If the Scout server is to provide the connection select the connection type PPTP.

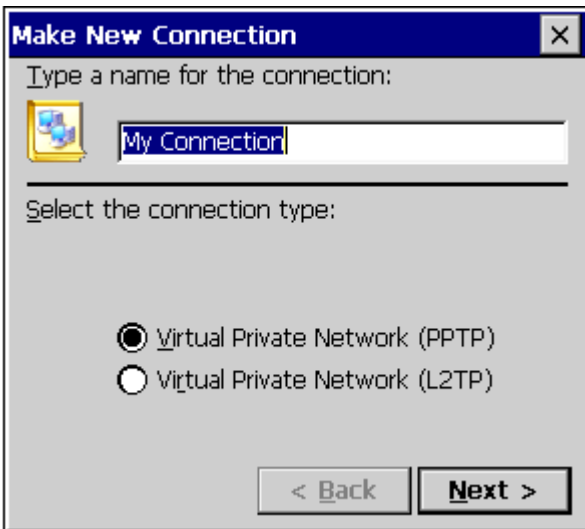


Figure 43 Make new connection

#### 4.4.19 LPD Settings



Figure 44:LPD Server Settings

Click **Start** or **Stop** to start or stop the LPD Server.

If **Launch on startup** is enabled the LPD Server will always be started during the start of the device.

The names of the printer queues correspond to the names of the printers.

#### 4.4.20 Shell Settings

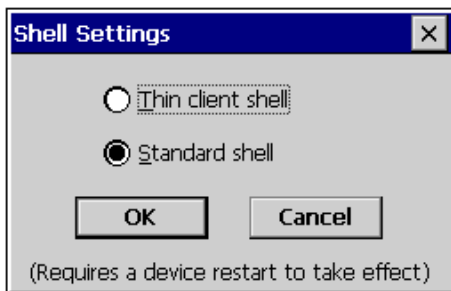


Figure 45:Shell Settings

Here you define, whether to work with the Thin Client Shell or the Standard Shell.

Restart the device for modifications to take effect.

By default the device works with the Standard Shell.



## 4.4.21 Licenses

The window contains a list of the licensed products and the state of the licenses (Gained / Not gained).

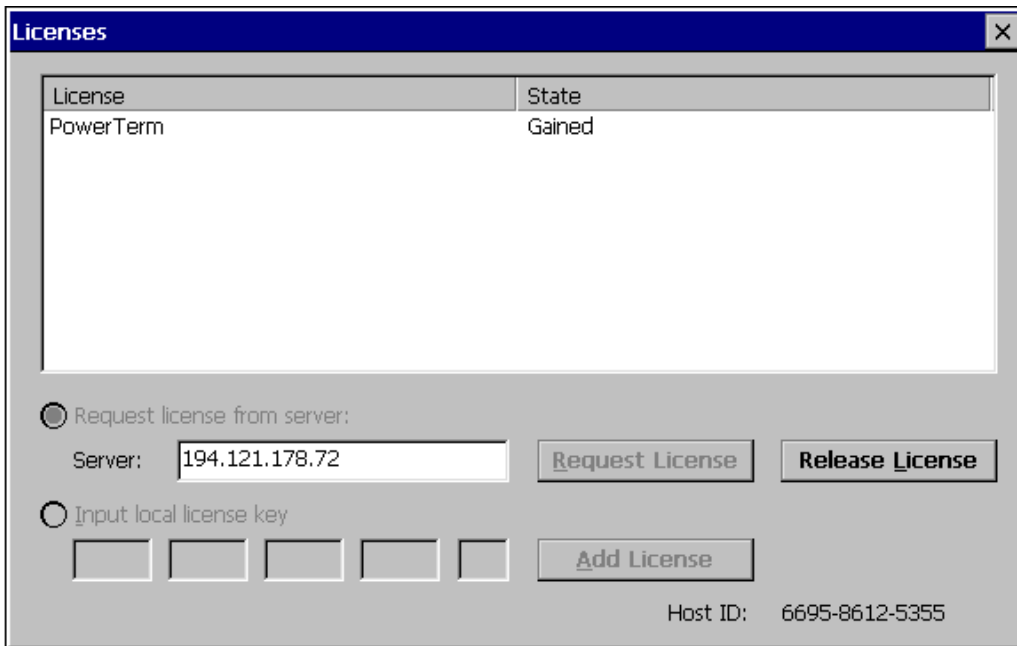


Figure 46:Licenses

**Request license from server:** The Scout server gets a request for a license. Clicking the button 'Release License' returns the license to the Scout server.

If you do not use Scout, i.e. no license is available on the Scout server, switch to **Input local license key**, in order to enter a local license key.

Provided there is a valid local license, this may be returned to the server by clicking "**Release License**".

### 4.4.21.1 License Activation

To activate licenses for **products** such as **PowerTerm** you have two options.

1. Activate the license base key on [www.myelux.com](http://www.myelux.com) > Product Activation Center, using Scout Enterprise (Version A) or
2. Activate the license base key on [www.myelux.com](http://www.myelux.com) > Product Activation Center by **splitting** (Version B) the license key into individual licenses bound to the **Host ID** of the client, and to be entered locally.

The procedure for both versions are written on the license certificate you get with the license base key.

Licenses for PowerTerm and Scout Enterprise are to be ordered from Fujitsu Siemens Computers. The order numbers are: PowerTerm: S26361-F2600-L144; Scout Enterprise: S26361-F2600-L148.

## 4.4.22 Security Management

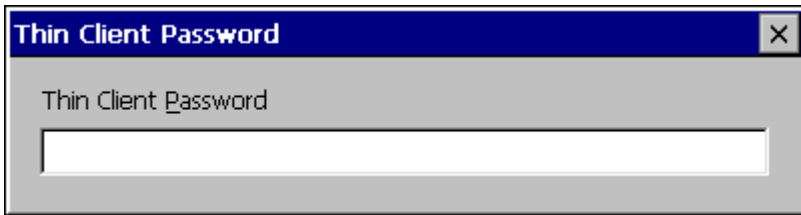


Figure 47: Device Password

To modify security settings a device password is required. Having entered this password the security dialog opens.

This is to enable or disable the right of access to the Setup dialog and the tabs ,Configuration' of the Connection Managers. Further, the device password can be modified here.

The modifications take effect immediately.



Figure 48: Security Management

## 5 Configuration of Applications

### 5.1 Add New Application – Microsoft Remote Desktop Client

From the Terminal Properties window click **OK** to switch to the Terminal Connection Manager and open the tab **Configuration**.

Click **Add...** to open the dialog **New Application**.

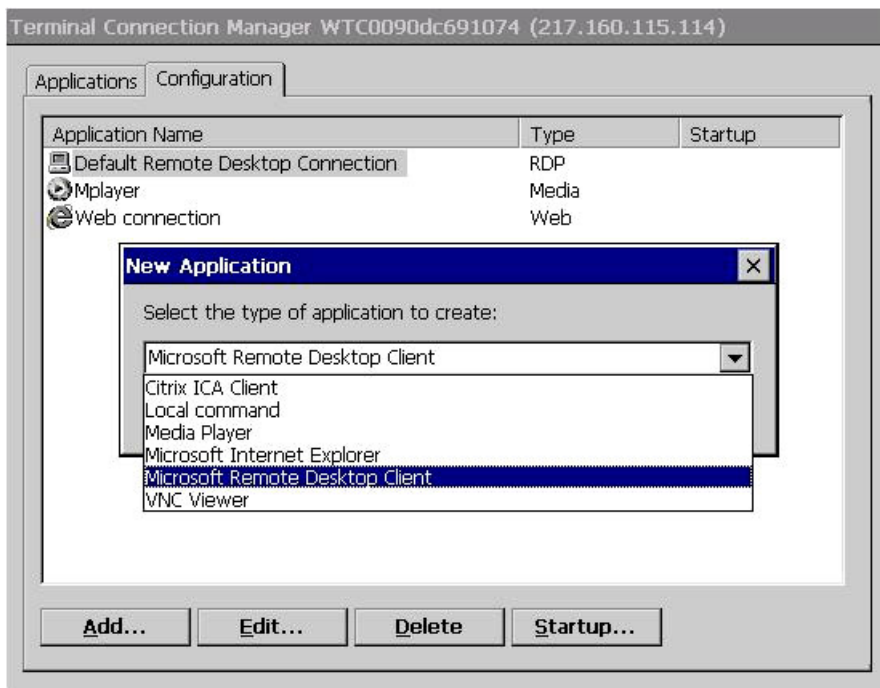


Figure 49 Terminal Connection Manager – Configuration – Add new application

## 5.1.1 WTS Connection Wizard

This chapter describes the configuration of a new application of the type **RDP**.

Step 1: Enter name for the new connection and the server you want to connect to.

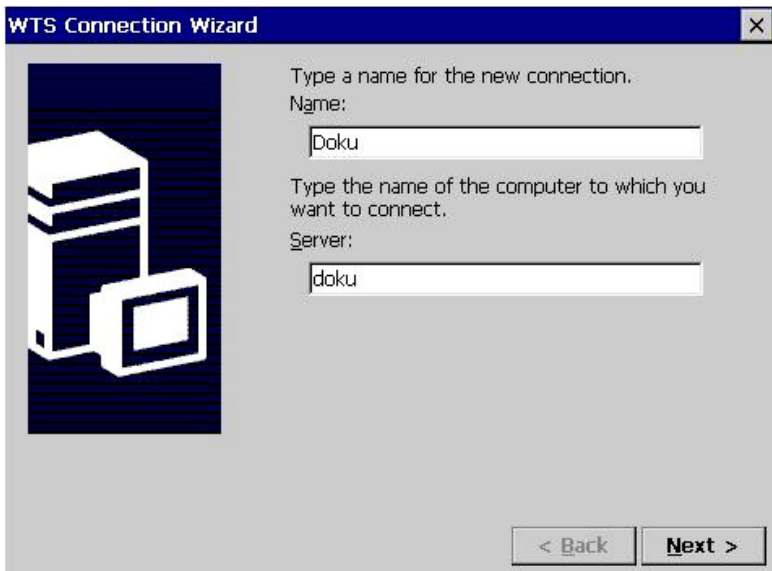


Figure 50 WTS Connection Wizard – Step 1

Step 2: For automatic logon you have to enter your user name, password and domain.

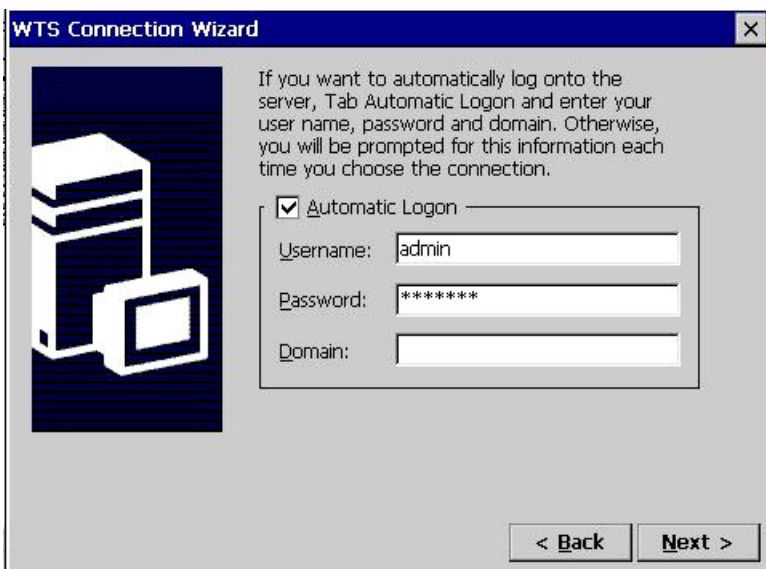


Figure 51 WTS Connection Wizard – Step 2

Step 3: On connection the default display is the Desktop, enter an application file name, if you want to start an application on connection.



Figure 52 WTS Connection Wizard – Step 3

Step 4: Click **Finish** to save your new connection.



Figure 53 WTS Connection Wizard – Step 4

## 5.2 Add New Application - Media Player

From the Terminal Properties window click **OK** to switch to the Terminal Connection Manager and open the tab **Configuration**

Click **Add...** to open the dialog **New Application**, and choose Media Player from the drop-down list.

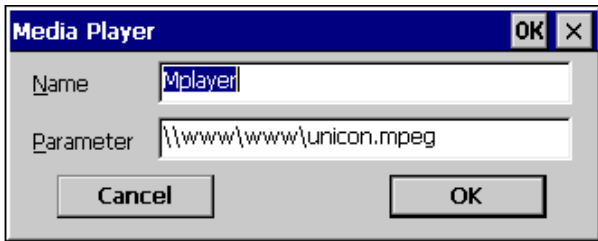


Figure 54 Configuration – Add New Application – Media Player

## 5.3 Add New Application - Internet Explorer

Click **Add...** to open the dialog **New Application**, and choose Microsoft Internet Explorer from the drop-down list.

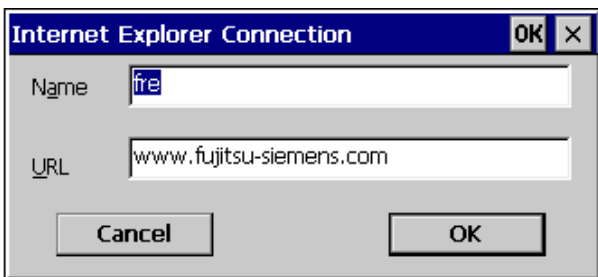


Figure 55 Configuration – Add New Application – Microsoft Internet Explorer

For the Internet Settings and Options see chapter 4.4.1 Internet Options.

## 5.4 Edit Connections

### 5.4.1 Edit an RDP Application

Once the application has been added, it can be edited any time. As an example, this chapter describes the **edit** procedure of an RDP Application.

In the **General** tab:

Connection: Define/Edit Name and Server Address

Automatic Logon: To enable this you have to enter Username, Password, Domain

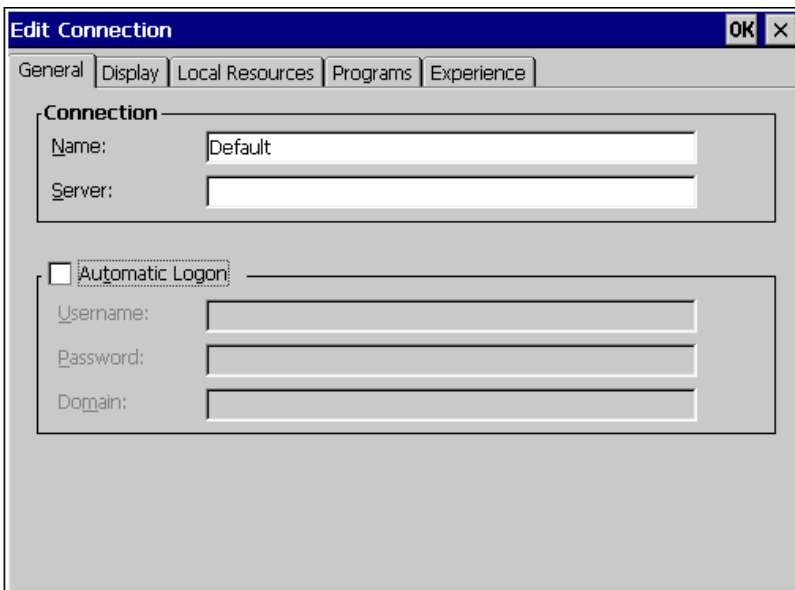


Figure 56 Edit Connection – General tab

Using the RDP Local Resources tab, you can configure the terminal's

Remote computer sound

- Local devices
  - Disk drives: enable local USB port mapping. It supports USB disk drives, such as USB FDD, HDD, Flash Disk and CD-ROM.
  - Printers: enables local parallel port mapping. It supports both parallel printers from LPT1 and USB printers from USB port.
  - Serial ports: enables local serial ports mapping.
  - Smart cards: enables local SmartCard mapping, if any.

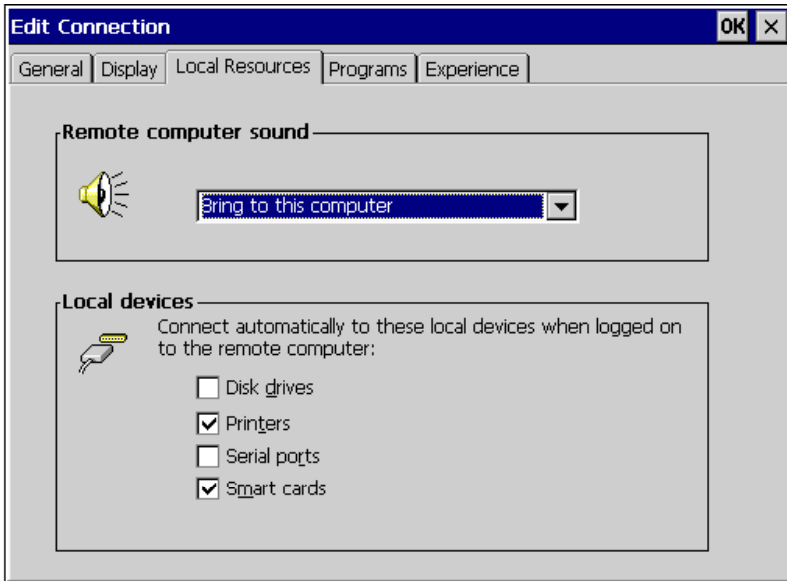


Figure 57 Edit Connection – Local Resources tab

Using the RDP Programs tab, you can enter a file name for the application to run on connection.

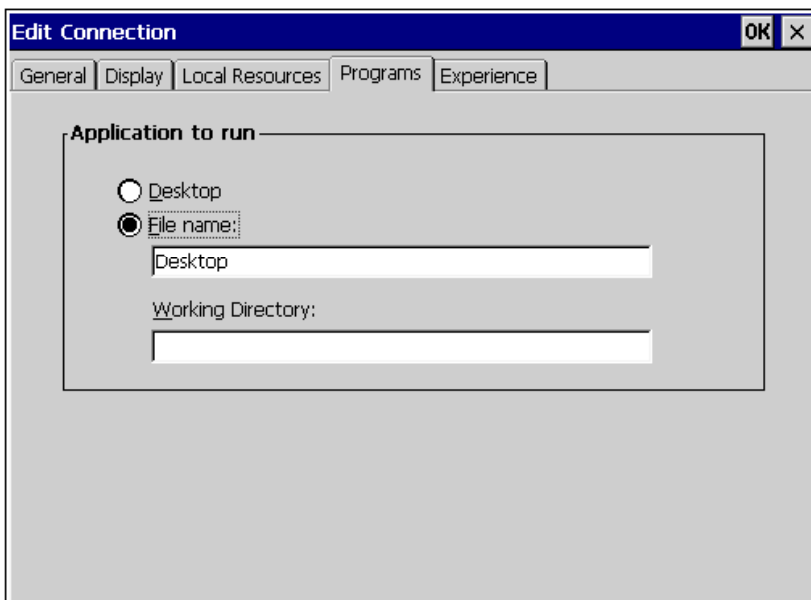


Figure 58 Edit Connection – Programs tab



Using the **RDP Experience** tab, you can choose your connection speed to optimize performance.

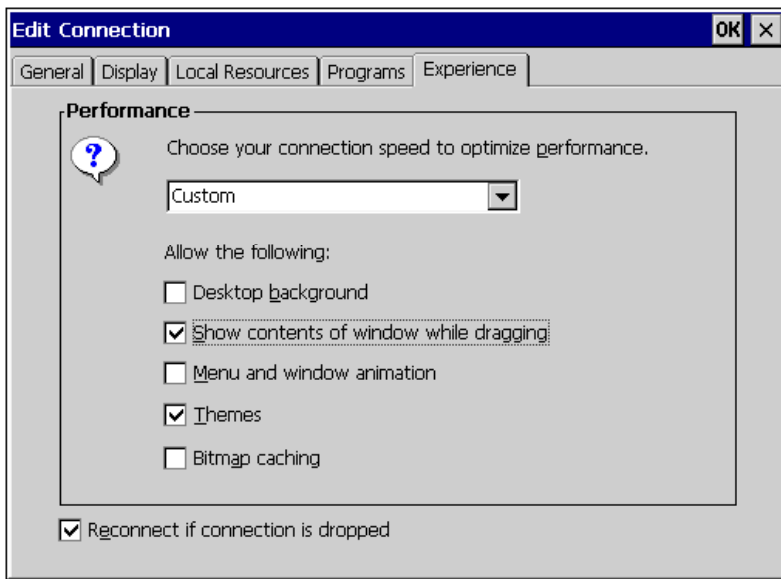


Figure 59 Edit Connection – Experience tab

## 6 Standard Shell

The dialogs described above may also be opened from a Standard Shell. The Standard Shell is activated in the Control Panel ,Shell Settings'.

Starting Programs from the Windows menu offers to start the defined connections, the Connection Manager as well as service programs.

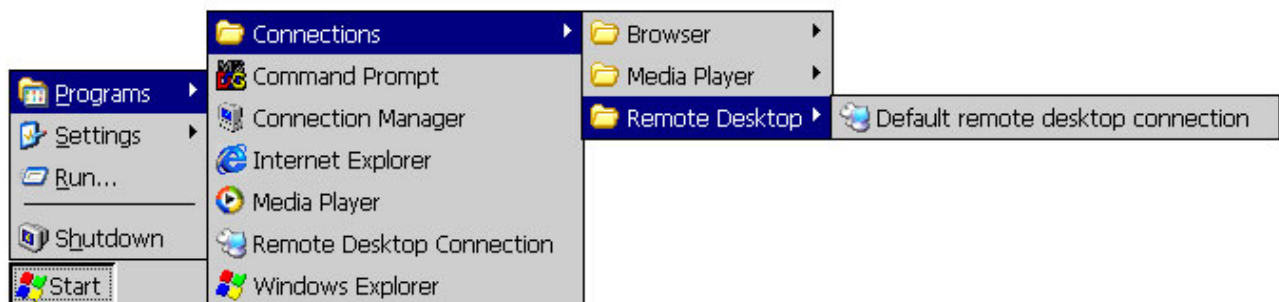


Figure 60 Programs – Connections

Selecting **Settings** from the Windows menu the 'Setup Device' dialog and the 'Control Panel' can be opened.



Figure 61 Settings

The menu option **Run** enables to start executable files.

The button *,Browse'* opens the File Explorer.

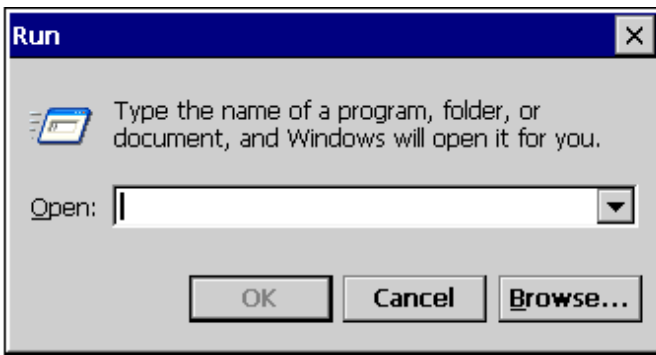


Figure 62 Run

The menu option **Shutdown** opens this dialog:

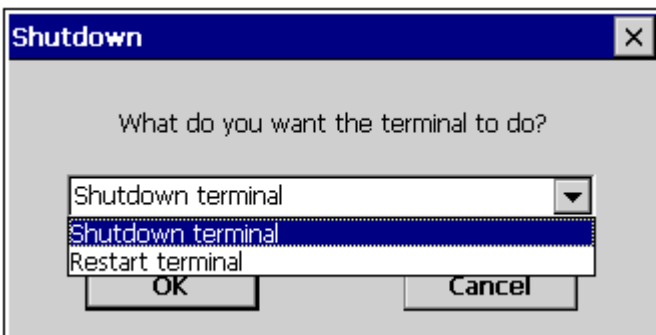


Figure 63 Shutdown

# 7 Index

accessibility.....	13	Keyboard	
Add printer.....	14	Repeat.....	18
Application.....	6	keyboard layout.....	2
automatic logon.....	32	license.....	29
Bandwidth.....	17	Management.....	2
browsing.....	13	Media Player	
Configuration		add application.....	34
add.....	6	Mouse	
delete.....	6	sensitivity.....	20
edit.....	6	Network file mapping.....	23
New Application.....	31	Ping.....	10
Console.....	10	Printer Model.....	14, 15
control panel.....	5	Printer Port.....	14
cookies.....	12	Properties.....	6
Date/Time.....	21	Protocol	
SNTP.....	21	update.....	19
Desktop Area.....	5	Proxy.....	19
Diagnosis		Query.....	22
Console.....	10	RDP Experience.....	37
Ping.....	10	RDP Local Resources.....	35
Display		RDP Programs.....	36
Colors.....	9	Refresh Frequency.....	5
Screensaver.....	9	Regional Settings	
Display Properties.....	20	InputLanguages.....	21
ELO USB TouchScreen.....	22	UserInterfaceLanguage ..	21
F2.....	8	Scout Enterprise manager.....	2
factory-default.....	2	Server Location.....	24
Firewall Settings.....	25	Setup Wizard.....	2
FIRMWARE.....	18	shortcuts.....	1
<b>Firmware Update</b> .....	18	system properties.....	18
FTP.....	18	terminal	
General.....	8	settings.....	11
Global ICA Client Settings.....	23	terminal name.....	4
keyboard shortcuts.....	23	Terminal Properties.....	8
Hotkeys.....	1	ThinPrint.....	16
HTTP.....	18	Advanced.....	16
Internet		Assignment.....	16
Advanced.....	12	Setup.....	16
Connection.....	12	update.....	18
General.....	11	USB	
Popups.....	12	storage management.....	22
Privacy.....	12	VNC Settings.....	22
Security.....	12	volume.....	21
Internet Explorer		Welcome.....	2
add application.....	34	WTS Connection Wizard.....	32