

Warranty
Registration:
register online today for a
chance to win a FREE Tripp Lite
product—www.triplite.com/warranty

Quick Start Guide

NetController™ Rackmount Console KVM Switches

Models: B040-008-19, B040-016-19



Out-of-the-box Installation

Take the KVM Switch and included cables out of the box to begin installation.

Note: If you are connecting a PS/2 computer to your B040-Series KVM switch, make sure it is powered off before connecting to the KVM Switch. Otherwise, the PS/2 Computer may not recognize the Keyboard and Mouse, preventing you from using them. USB computers do not have this limitation.

Step 1: Connect the included AC power cord to the KVM Switch to power it on.

If you are using an individual B040-008-19 or B040-016-19 KVM switch that is not Daisy-Chained to another switch, proceed to step 4.

Daisy-Chaining Multiple NetController KVM Switches

Warning! The total length of daisy-chain cabling from the master KVM switch to the last KVM switch in a daisy-chain installation (regardless of the number of levels) must not exceed 16 ft. (5 m). If the total length of the daisy-chain cabling exceeds 16 ft. (5 m), the installation will not function properly.

Step 2: You will need a P781 Series Daisy-Chain cable (HD15-M to HD15-F) to connect the Daisy-Chain OUT Port (HD15-F) of the Master KVM Switch (1st KVM switch in a chain) to the Daisy-Chain IN Port (HD15-M) of the second KVM switch. Connect the AC power cord to the second switch to power it on. **You can Daisy-Chain any combination of non-console NetController KVM switches to a maximum of 8 levels.**

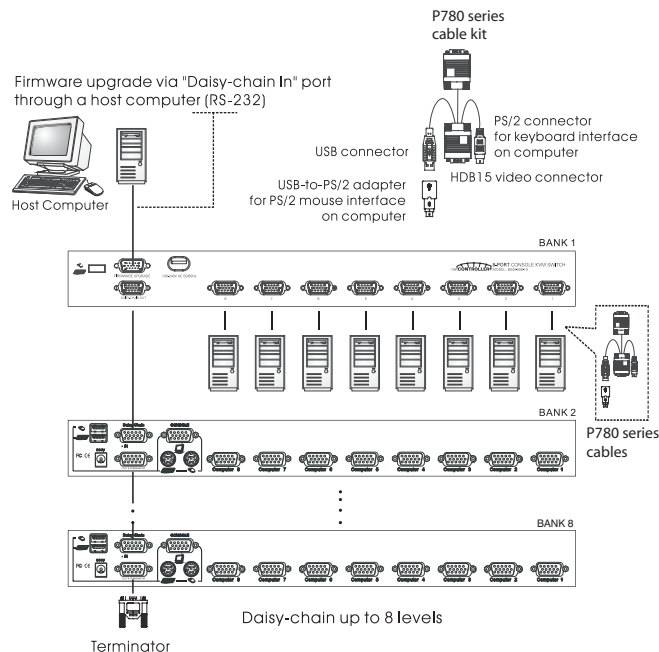
Step 3: Repeat Step 2 to connect more non-console NetController KVM switches using the supplied daisy-chain cable or another P781 Cable. Attach the included Daisy-Chain Terminator to the Daisy-Chain OUT port of the last KVM in the Daisy-Chain.

Note: It is not necessary to use the Daisy-Chain Terminator on the Daisy-Chain OUT port of the NetController KVM switch if you are not Daisy-Chaining it to another KVM switch.

TRIPP-LITE

1111 W. 35th Street, Chicago, IL 60609 USA
(773) 869-1234 • www.triplite.com

Out-of-the-box Installation (continued)



Step 4: Connect each of your computers to a computer port on the rear panel of each NetController KVM switch using a Tripp Lite P780-Series USB-PS/2 KVM Cable Kit (not included). The Tripp Lite P780-Series KVM cable has a HD15 connector on one end and a PS/2 Keyboard connector, USB connector, HD15 connector and a USB to PS/2 Mouse Adapter. When connecting with a USB computer, the USB connector is the only connector needed for Keyboard and Mouse, leaving the PS/2 Keyboard connector unplugged. When connecting with a PS/2 computer, add the USB to PS/2 Mouse adapter to the USB connector and you'll have a PS/2 connector for the mouse. Do not connect USB connector and PS/2 keyboard connector to a computer at the same time.

Step 5: Power up the connected computers. After your computer is powered up, the PS/2 keyboard and mouse will be recognized and you can now begin operating your B040-Series KVM switch.

Easy Operation

There are three ways to select a specific computer connected to your B040-Series KVM Switch: Push Buttons, Hotkey Commands or On-Screen Display (OSD) Menu.

Push Buttons

Switch to any connected computer simply by pressing the corresponding button on the front panel of your NetController KVM switch.

Easy Operation (continued)

Hotkey Commands

A keyboard hotkey sequence consists of at least three specific keystrokes:

Hotkey sequence = ScrLk* + ScrLk* + Command key(s)

*For a hotkey command to be validated, each hotkey must be pressed within 2 seconds of the preceding key.

*For detailed hotkey sequences and their corresponding functional commands, see Quick Reference Sheet on the other side of this Quick Start Guide.

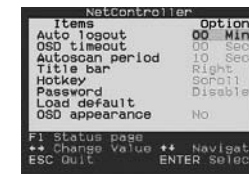
*Hotkey activation keys can be switched to any of 4 keys using the OSD Setup Menu (Scroll Lock, Caps Lock, Num Lock or F12). See Owner's Manual CD for details.

OSD Menu

To activate the OSD (On-Screen Display) Main Menu, use the hotkey sequence: ScrLk + ScrLk + Space Bar



Main OSD Menu



Setup Menu

OSD Main menu

Select computer: Use \uparrow keys to navigate to a connected computer. Use the Page Up/Page Down Buttons to display connected computers on Daisy-Chained KVMs. Press enter to select the desired computer as active.

Edit computer name: Highlight the desired computer port using the \uparrow keys (use Page Up/Page Down to scroll through Daisy-Chained KVMs) and hit the Insert key. Change to the desired name and hit the Enter key to confirm it.

Go to Next OSD Menu Page: Hit the F1 key when in the OSD Main Menu to view the OSD Setup Page. Hit F1 when in the OSD Setup Page to view the OSD Status Page.

Logout: When the password feature is enabled and you are in the OSD Main Menu screen, you can hit the F10 key to logout of the KVM switch. Once F10 is pressed, one must enter the password to operate the KVM switch.

Setup Menu (See Owner's Manual CD for details)

Auto Logout: Specifies non-activity duration before KVM is logged off and password is required to begin operation (00-99 min).

OSD Timeout: Specifies non-activity duration before OSD closes.

Auto Scan Period: Specifies Auto Scan time intervals.

Title Bar: Allows user to disable Title Bar, or to have it displayed on the Right or Left side of the monitor.

Hotkey: Specifies hotkey preceding sequence (Scroll Lock, Caps Lock, F12 or Num Lock).

Password: Specifies the security password.

Load Default: Load default settings to all KVM switches.

OSD Appearance: Keep/Hide OSD Menu after switching ports.

F1—Status Page: Opens status menu.

Quick Reference Guide

QUICK REFERENCE SHEET for NetController KVM Switches—Hotkey and OSD Operating Commands Hotkey Sequence⁵= [ScrLk]⁴ + [ScrLk]⁴ + Command key(s)

Command	Hotkey Sequence ⁵	OSD Control ¹	Description
Select Computer	ScrLk ⁴ + ScrLk ⁴ + ab + yz (ab= 2-Digit Bank # yz= 2-Digit Channel #) ²	Highlight the desired computer and hit the Enter key	Activates a desired computer to be accessed via the console (Shared USB or PS/2 Keyboard, Mouse and Monitor)
Next Lower Channel	ScrLk ⁴ + ScrLk ⁴ + ↓	—	Selects the next lower connected channel on the active KVM Switch
Next Higher Channel	ScrLk ⁴ + ScrLk ⁴ + ↑	—	Selects the next higher connected channel on the active KVM Switch
Next Lower Bank	ScrLk ⁴ + ScrLk ⁴ + PgUp	Hit Page Up button when in OSD Main Menu	Select the next lower KVM Switch in a Daisy-Chain
Next Higher Bank	ScrLk ⁴ + ScrLk ⁴ + PgDn	Hit Page Down when in OSD Main Menu	Select the next higher KVM Switch in a Daisy-Chain
Beep On/Off	ScrLk ⁴ + ScrLk ⁴ + B	—	Turns the beep sound on/off when Auto Scanning and when hitting hotkeys
Auto Scan	ScrLk ⁴ + ScrLk ⁴ + S	—	Starts an Auto Scan of all the connected computers
Stop Autoscan	Any key	—	Stops an Auto Scan of all the connected computers
Title Bar On/Off	ScrLk ⁴ + ScrLk ⁴ + T	—	Turns the Title Bar On/Off
Reset Console Mouse & Keyboard	ScrLk ⁴ + ScrLk ⁴ + End	—	Resets Console Mouse & Keyboard in the unlikely event of a lockup
Show OSD Main Menu	ScrLk ⁴ + ScrLk ⁴ + (Space Bar)	—	Opens up the OSD Main Menu
Change Computer Name	—	Highlight the desired computer in the OSD Main Menu, hit Insert to change name	Changes the computer's name from the default (PC01, PC02, etc) to a user-defined name. 8 character limit
Load Default	—	In OSD Setup Menu select Load Default and hit the Enter Key	Restores all settings (Auto Logout, OSD Timeout, etc.) on all daisy-chained KVM switches to the default settings. Does not affect password
OSD Appearance	—	In OSD Setup Menu highlight OSD Appearance and use ↔ Keys to choose Yes/No	Specifies if you want to keep/hide the OSD Menu after a Port Switching Operation
Auto Scan Period (00 – 95 seconds)	—	In OSD Setup Menu highlight Auto Scan Period and use the ↔ keys to choose time interval	Specifies a time interval for the Auto Scan to switch between computers. Auto Scan set to 10 seconds by default. 00= Disabled
Auto Logout Timeout (00-99 minutes)	—	In OSD Setup Menu highlight Auto Logout and use the ↔ keys to choose time interval	Specifies the amount of time that must pass without keyboard activity before KVM logs off. This requires password to be entered to access KVM. Auto Logout is disabled by default: 00= Disabled
OSD Menu Timeout (00-95 seconds)	—	In OSD Setup Menu highlight OSD Timeout and use the ↔ keys to choose time interval	Specifies the amount of time with no activity before the OSD Menu turns off. OSD Menu Timeout defaults at 30 seconds
Title Bar Position	—	In OSD Setup Menu highlight Title Bar; use ↔ keys to choose Left, Right or Disable	Displays the Title Bar on the Left or Right side of the monitor screen or disables it
Password ³	—	In OSD Setup Menu highlight Password and hit the Enter key; follow steps to set password	Enables/disables the password for the B040-004, -008 or -016 KVM switch. User-definable password has an 8-character limit
Define Hotkey Preceding Sequence	—	In OSD Setup Menu highlight the Hotkey Option; use ↔ keys to select desired Hotkey	Selects a Hotkey preceding sequence of Scroll Lock, Caps Lock, Num Lock or F12

Notes:

- To activate the OSD main menu, use the hotkey sequence ScrLk + ScrLk + (Space Bar). For detailed OSD operation reference, please refer to the User Guide. When OSD Main Menu is active, the mouse will be locked until the OSD Menu is off.
- Note that a, b, y and z each denotes a number key. ab= 01 - 08 yz= 01 - 16. (e.g. ScrLk + ScrLk + 03 + 06 is for Bank 3, Port 6.) When using a single KVM Switch configuration, the default Bank # is 01.
- The password has an 8 character limit. If you forget your password and can't access your NetController KVM switch, contact Tripp Lite Tech Support at (773) 869-1234.
- User-Definable Hotkey Preceding sequence. OSD Setup Menu allows user to choose between Scroll Lock, Caps Lock, Num Lock and F12.
- Each hotkey in a hotkey sequence must be pressed within 2 seconds of the preceding hotkey for the command to take place.

Warranty Registration

Visit www.tripplite.com/warranty today to register the warranty for your new Tripp Lite product. You'll be automatically entered into a drawing for a chance to win a FREE Tripp Lite product!*

* No purchase necessary. Void where prohibited. Some restrictions apply. See website for details.

Copyright © 2008 Tripp Lite. All rights reserved. The policy of Tripp Lite is one of continuous improvement. Specifications are subject to change without notice. Made in China.



Tripp Lite World Headquarters
1111 W. 35th Street, Chicago, IL 60609 USA
(773) 869-1234 • www.tripplite.com