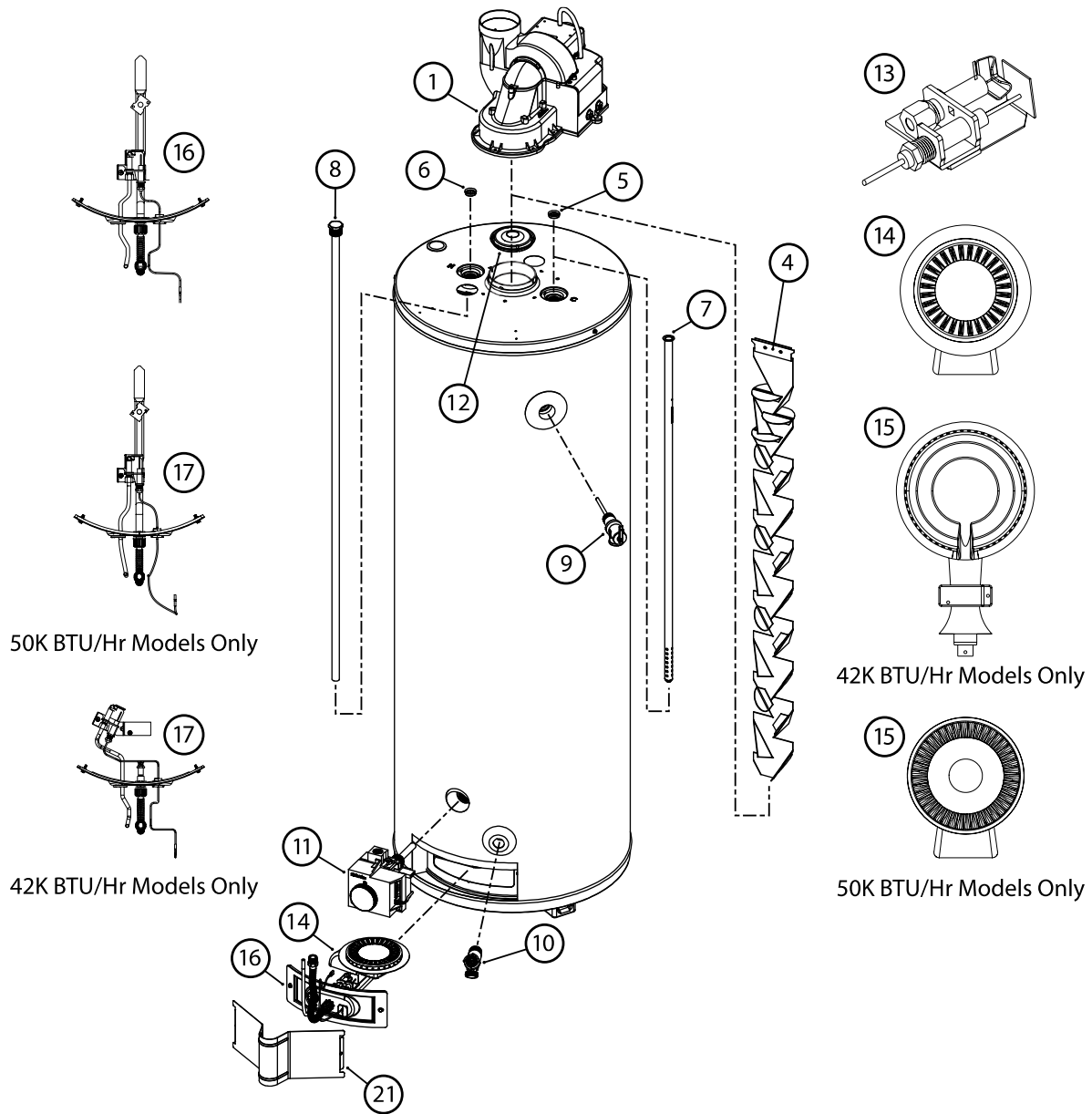




# POWERFLEX®

**Power Vent &  
Power Direct Vent  
Replacement Parts**

## Repair Parts Illustration



## Repair Parts List

No.	Part Name and Description	No.	Part Name and Description
1	Blower	12	Restrictor Plate
2	Inlet Pressure Switch (not pictured)	13	Pilot Assembly - Natural Gas/LP Gas
3	Outlet Pressure Switch (not pictured)	14	Natural Gas Burner
4	Flue Baffle	15	LP Gas Burner
5	Heat Trap (cold)	16	Manifold Door Assembly - Natural Gas
6	Heat Trap (hot)	17	Manifold Door Assembly - LP Gas
7	Cold Water Dip Tube	18	Two Piece Wire Connector with Retainer Clip (not shown)
8	Anode Rod	19	Manifold Door Gasket
9	Temperature and Pressure Valve	20	Viewport Assembly
10	Drain Valve	21	Outer Door
11	Gas Valve/Thermostat		

## FVIR POWERFLEX® and POWERFLEX DIRECT™

Models PVG & PDVG -40T42, -50T42, & -50T60

Item Number	Description	Part Number
1	Blower [PVG-40T42]	6910774
1	Blower [PVG-50T42]	6910776
1	Blower [PVG-50T60]	6910775
1	Blower [PDVG -40T42 & 50T42]	6910772
1	Blower [PDVG-50T60]	6910773
2	Inlet Pressure Switch [PDVG -40T42 & 50T42]	3210545
3	Outlet Pressure Switch [PDVG -40T42 & 50T42]	3210546
2&3	Inlet/Outlet Pressure Switch [PDVG-50T60]	3210601
3	Outlet Pressure Switch [PVG-40T42]	3210583
3	Outlet Pressure Switch [PVG-50T42]	3210600
3	Outlet Pressure Switch [PVG-50T60]	3210584
5&6	Heat Traps	6900429
8	Anode Rod	4710182
9	Temperature and Pressure Relief Valve	6905041
10	Drain Valve	6900764
11	Gas Valve - Natural Gas	6910782
11	Gas Valve - Propane (LP) Gas	6910783
11	Gas Valve - Cover	3210585
13	Pilot Assembly - Natural Gas	6910784
13	Pilot Assembly - Propane (LP) Gas	6910785
16	Manifold Door Assembly - Natural Gas 40-Gallon	6910777
16	Manifold Door Assembly - Natural Gas 50-Gallon	6910779
17	Manifold Door Assembly - L.P. Gas [40T42]	6910778
17	Manifold Door Assembly - L.P. Gas [50T42]	6910780
17	Manifold Door Assembly - L.P. Gas [50T60]	6910781
19	Manifold Door Gasket	6910424
N/A	Reducer - 3" x 2" PVC	4710869

**When ordering repair parts, always give the following information:**

- Model, serial and product number
- Parts Item number
- Type of gas
- Parts description

**Order Entry and Sales**

500 Princeton Road (FedEx, UPS)  
Johnson City, TN 37601-2030  
P.O. Box 4056 (Mailing)  
Johnson City, TN 37602-4056  
Hours of Operation:  
Monday-Friday 8:00 a.m. - 6:30 p.m. EST  
(800) 937-1037 Fax: (800) 581-7224

**Warranty and Service Support**

500 Princeton Road (FedEx, UPS)  
Johnson City, TN 37601-2030  
P.O. Box 1597 (Mailing)  
Johnson City, TN 37605

**Residential Product Service and Support**

Hours of Operation:  
Monday 8:00 a.m. - 7:00 p.m. EST  
Tuesday-Friday 8:00 a.m. - 8:00 p.m. EST  
Saturday 9:00 a.m. - 6:00 p.m. EST  
(800) 999-9515 Fax: (800) 999-5210

**Commercial Product Service and Support**

Hours of Operation:  
Monday 8:00 a.m. - 7:00 p.m. EST  
Tuesday-Friday 8:00 a.m. - 8:00 p.m. EST  
Saturday - On Call  
(800) 456-9805 Fax: (800) 999-5210

**Warranty Claims**

Hours of Operation:  
Monday-Friday 8:00 a.m. - 5:00 p.m. EST  
(800) 999-5052 Fax: (800) 999-5210

**General Information**

Hours of Operation:  
Monday-Friday 8:00 a.m. - 5:00 p.m. EST  
(423) 283-8000 Fax: (423) 283-8050

**International Sales**

Hours of Operation:  
Monday-Friday 8:00 a.m. - 5:00 p.m. EST  
(423) 283-8062 or (423) 283-8176  
Fax: (423) 283-8137

**Literature Fulfillment/Promotional Items**

Hours of Operation:  
Monday-Friday 8:00 a.m. - 5:00 p.m. EST  
(423) 232-2477 Fax: (423) 232-2480

**Credit/Collections**

Hours of Operation:  
Monday-Friday 8:00 a.m. - 5:00 p.m. EST  
(423) 434-1681 Fax: (423) 975-2457

Visit our Website at  
[www.americanwaterheater.com](http://www.americanwaterheater.com)