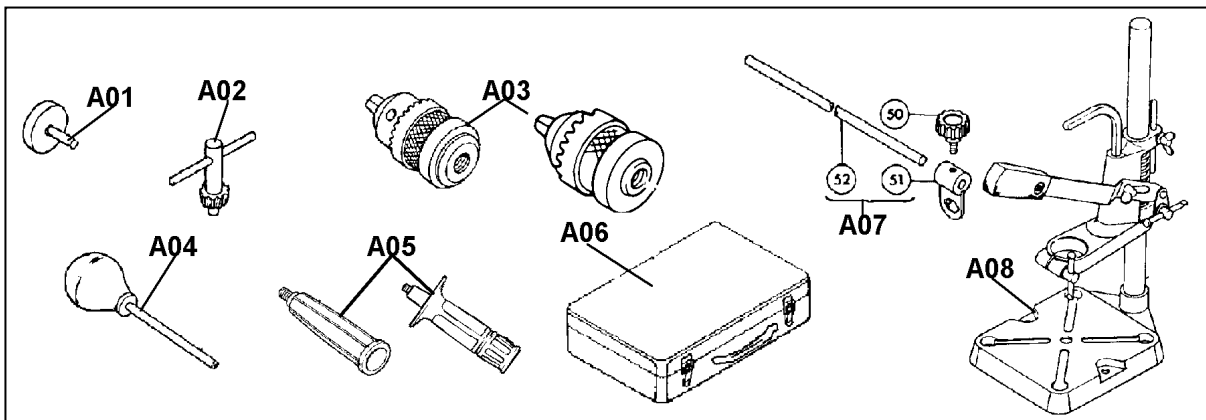
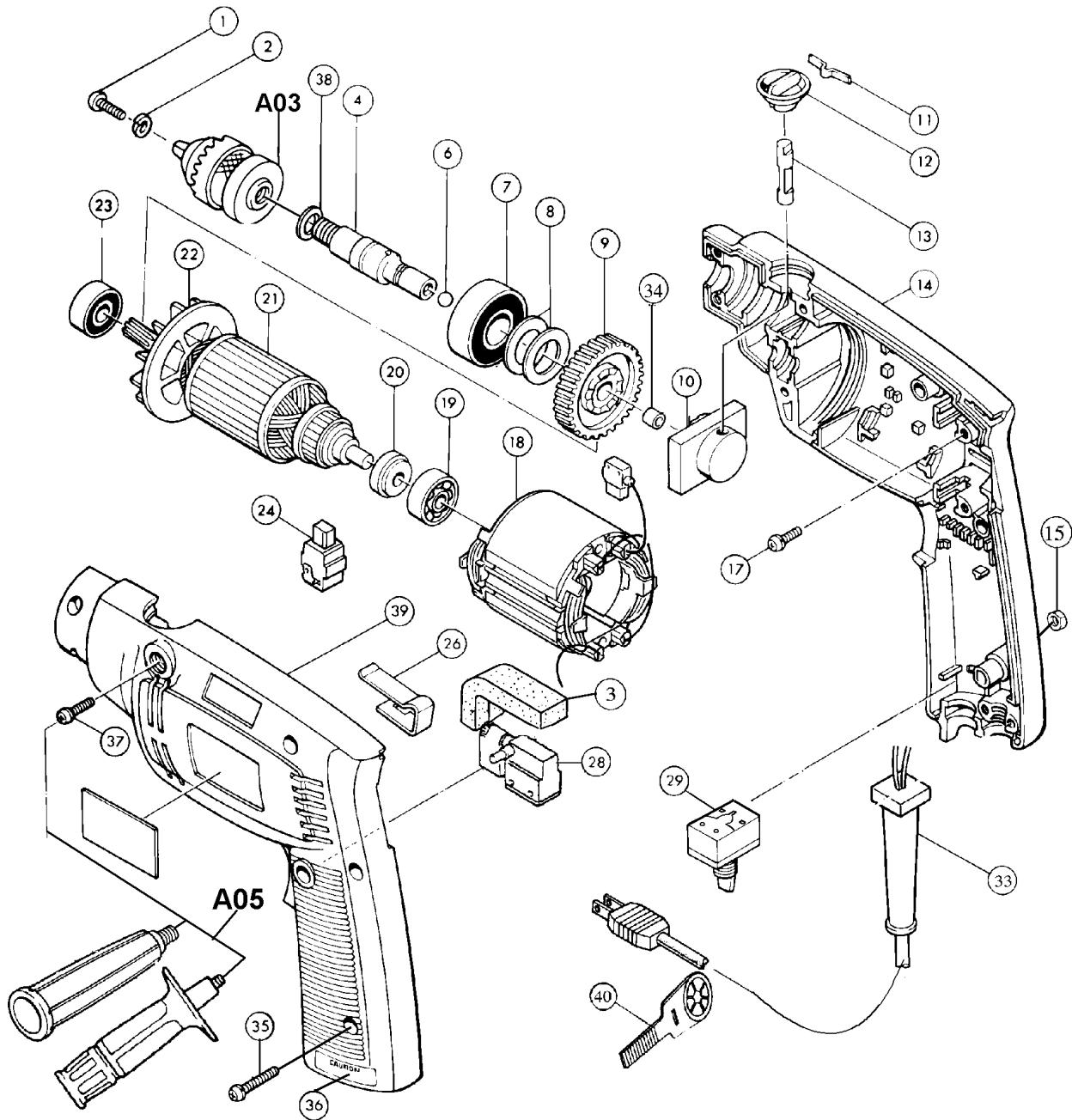
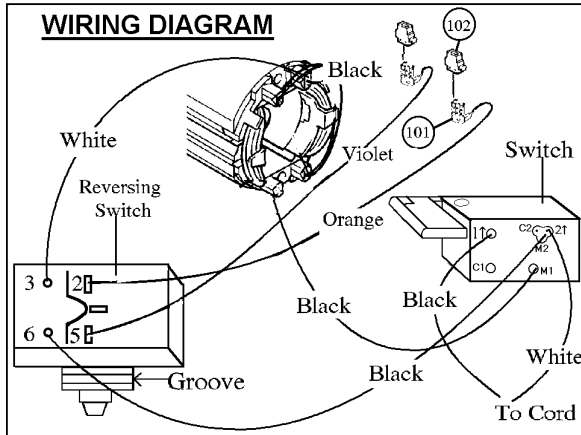




3/8" HAMMER DRILL (VARIABLE SPEED/REVERSING) (Serial No 631661E & Higher)

Model NHP1030 (MJ)



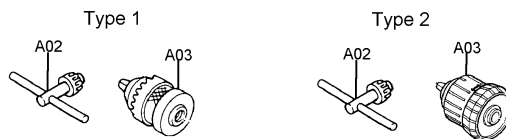


Item No.	Part No.	No. Used	Description	Item No.	Part No.	No. Used	Description
1	251448-1	1	(-) P.H. Screw M5x18	29	651478-6	1	Reversing Switch
2	942101-7	1	Spring Washer 5 (Old)	33	664424-0	1	Cord with Plug Strain Relief & Cord Guard 2P-18-2.0
3	685717-2	1	Sponge Sheet	34	214056-9	1	Plane Bearing 10
4	*	1	3/8" Spindle	35	911143-2	6	P.H. Screw M4x22 (With Washer)
5	254011-9	1	Woodruff Key 4 (Type 1) *	36	817613-8	1	Caution Label (Eng/Fr)
6	216002-8	1	Steel Ball 4.8	37	911143-2	1	P.H. Screw M4x22 (With Washer)
7	211206-7	1	Ball Bearing 6202LLB	38	253758-2	1	Flat Washer 10
8	253070-0	2	Flat Washer 15	39	182401-5	1	Housing Set (Includes Item 36)
9	*	1	Helical Gear 64	40	411780-7	1	Key Holder
10	153120-0	1	Cam (With Item 34)	50	251851-6	1	Screw M5x7
11	232053-3	1	Leaf Spring	51	164549-5	1	Stopper Holder
12	411623-3	1	Knob	52	321220-6	1	Depth Rod
13	321111-1	1	Shifter Pin	101	654069-2	2	Receptacle
14	182401-5	1	Housing Set (Old 414810-3)	102	686015-7	2	Receptacle Sleeve
15	931102-0	7	Hex Nut M4	Accessories			
17	911124-6	2	P.H. Screw M4x14	A01	794048-9	1	Wheel Point 50-80P
18	533181-0	1	Field	A02	*	1	3/8" Chuck Key
19	211028-5	1	Ball Bearing 627LB	A03	*	1	3/8" Drill Chuck
20	681614-0	1	Insulation Washer	A04	765009-6	1	Blow-Out Bulb 64
21	511951-7	1	Armature Assy (Includes Items 19, 20, 22 & 23)	A05	152491-2	1	Side Handle 36
22	241812-4	1	Fan 58	A06	181949-4	1	Metal Carrying Case (Old 823046-7)
23	211033-2	1	Ball Bearing 608LB	A07	122395-2	1	Depth Rod Assy (Includes Items 50 - 52)
24	191910-3	2	Carbon Brush CB-401	A08	122190-0	1	Type 43 Bench Drill Stand (See Service Manual for Breakdown)
26	342460-3	1	Hook				
28	650205-8	1	Switch (With Lock) V.S. (Old 651270-0)				

* SEE SERVICE CHANGES

SERVICE CHANGES

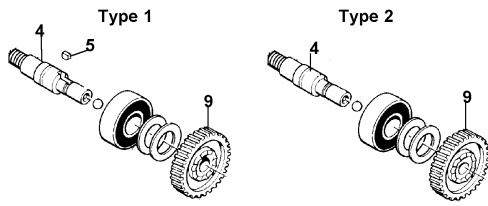
1. Change on Drill Chuck & Chuck Key.



Item No.	Description	Type 1	Type 2
A02	3/8" Drill Chuck Key	763403-6	763415-9
A03	3/8" Drill Chuck	763048-0 (No Longer Available)	763067-6

Above parts are completely interchangeable as a set.

2. Change on Spindle, Helical Gear and Woodruff Key.



Item No.	Description	Type 1	Type 2
4	3/8" Spindle	321110-3	323786-2
5	Woodruff Key 4	254011-9	- - - -
9	Helical Gear	221663-1	226495-1
	Serial No.	~ 831451E	831452E ~

Above parts are completely interchangeable as a set.