



**18V LXT LITHIUM-ION
1/2" HAMMER DRIVER-DRILL (BHP452)
1/2" DRIVER-DRILL (BDF452)**

MAKITA BUILT, 4-POLE MAXIMUM TORQUE MOTOR DELIVERS 450 IN.LBS. OF EFFICIENT TORQUE IN A COMPACT SIZE

2-Speed Design (0-400 / 0-1,500) Covers a Wide Range of Drilling and Driving Applications

Shift-Lock™ Drive System Quickly Shifts Between Modes

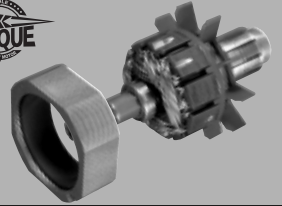
Compact and Lightweight Design for Reduced Operator Fatigue



**Models
BHP452/BHP452Z
BDF452/BDF452Z**



POWER



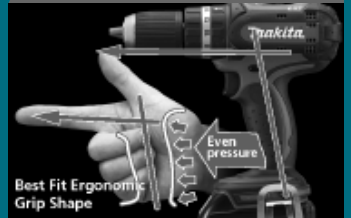
Makita-built 4-pole motor delivers 450 in.lbs. of max torque, and handles concrete, wood and metal

CONTROL



2-speed all metal transmission with easy mode shift

COMFORT



Best Fit Ergonomic Grip Shape

Lightweight with ergonomic grip

PERFORMANCE

2.5X MORE CYCLES

LXT LITHIUM-ION 3.0Ah BATTERY

PROF. Ni-Cad
2.0Ah BATTERY

LIFETIME WORK

LXT LITHIUM-ION 3.0Ah BATTERY

PROF. Ni-Cad
2.0Ah BATTERY

LXT Li-Ion batteries charge in 30 minutes, run longer and deliver 2.5X more cycles

BEST POWER-TO-WEIGHT RATIO

18V LXT LITHIUM-ION 1/2" HAMMER DRIVER-DRILL & 1/2" DRIVER-DRILL

Models BHP452 / BDF452

FEATURES & BENEFITS

- Makita built, 4-pole maximum torque motor delivers 450 in. lbs. of efficient torque in a compact size
- 2-Speed design (0-400 / 0-1,500) covers a wide range of drilling and driving applications
- Shift-Lock™ drive system quickly shifts between modes
- Compact and lightweight design for reduced operator fatigue
- Trigger-forward built-in L.E.D. light illuminates the work area
- Ergonomic shape fits like a glove with even pressure and easy control
- Makita Lithium-Ion battery provides longer run time, 5x lower self discharge (for use any time) and 16 firm holding contact terminals (for constant high power)
- 30-minute rapid optimum charger communicates with the battery's built-in chip throughout the charging process to optimize battery life by actively controlling current, voltage and temperature
- 30-minute rapid optimum charger has a built-in fan to cool the battery to produce more lifetime work
- Accepts Lithium-Ion slide-style batteries (BL1830 & BL1815)
- 3-year warranty on tool and 1-year warranty on battery and charger

STANDARD EQUIPMENT

- 2 ea. 18V LXT Lithium-Ion 3.0Ah battery (BL1830)
- 30-minute rapid optimum charger (DC18RA)
- Tool belt clip and screw (324705-1 and 251314-2)
- Tool case (824753-5)
- Plastic battery cover (450128-8)

SPECIFICATIONS

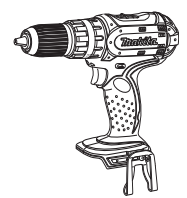
Model	BHP452	BDF452
Capacity	1/2"	1/2"
No load speed	0 - 400 - 1,500 RPM	
Blows per minute	0 - 6,000 - 22,500 BPM	N/A
Maximum torque	450 in.lbs.	
Battery	18VDC (3.0Ah)	
Overall length	8-3/4"	8"
Net weight (w/ battery)	4.2 lbs.	4.1 lbs.
Shipping weight	12.5 lbs.	12.4 lbs.
Master carton qty.	5	
UPC codes:	(BHP452) 088381-086066 (BDF452) 088381-079457	(BHP452Z) 088381-086097 (BDF452Z) 088381-079938

OPTIONAL ACCESSORIES

- 28 Pc. Impact drill & driver set (T-00169)
- Optimum automotive charger (DC18SE)



- 17 Pc. Impact drill & driver set (T-00153)



Model BHP452



Model BHP452Z



Model BDF452



Model BDF452Z



For a complete listing of Makita cordless tools and accessories please refer to the Makita General Catalog, or visit our website at makitatools.com, or call 1-800-4MAKITA.

All specifications subject to change without prior notice. All models and accessories subject to stock on hand.
NTF-0508-5M MA-0314-08 For more information, call 1-800-4MAKITA or visit makitatools.com



Makita U.S.A., 14930 Northam St., La Mirada, CA 90638