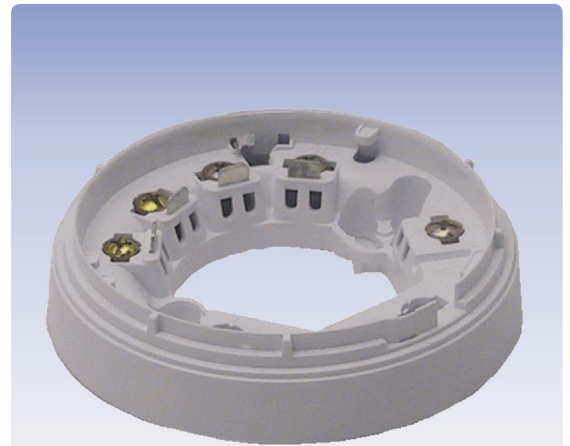


# Detector Base Series ORBIS

## MB-00001

- **Suitable for automatic detectors in conventional technology**
- **Screw terminals for secure connection of multiple wires**
- **Terminals for connection of remote indicator**
- **Mechanical theft protection can be activated**



### Description

The Detector Base MB-00001 is designed for the easy connection of automatic detectors Series ORBIS in conventional technology. Due to its robust multi-wire screw terminals, the detectors can be wired with ease, thus achieving a secure and durable connection. The base provides the possibility to easily connect an

external remote indicator, and has been designed for surface mounting in dry rooms. For special applications a range of accessories (for moist room, false ceiling or flush installation) is available. A mechanical theft protection of the detector can optionally be activated at the detector base.

### Specifications

Ambient temperature	-40°C to +70°C
Relative humidity	10 – 98% (no condensation)
Dimensions $\varnothing \times H$	100 × 23 (mm)
Colour	white
Weight	60g
Order number	246042
Order name	Detector Base/Conv./ORBIS/Apo MB-00001