

ADDENDUM FOR THE LP5-101 USER GUIDE

SPRING PIN OPERATION INSTRUCTION.

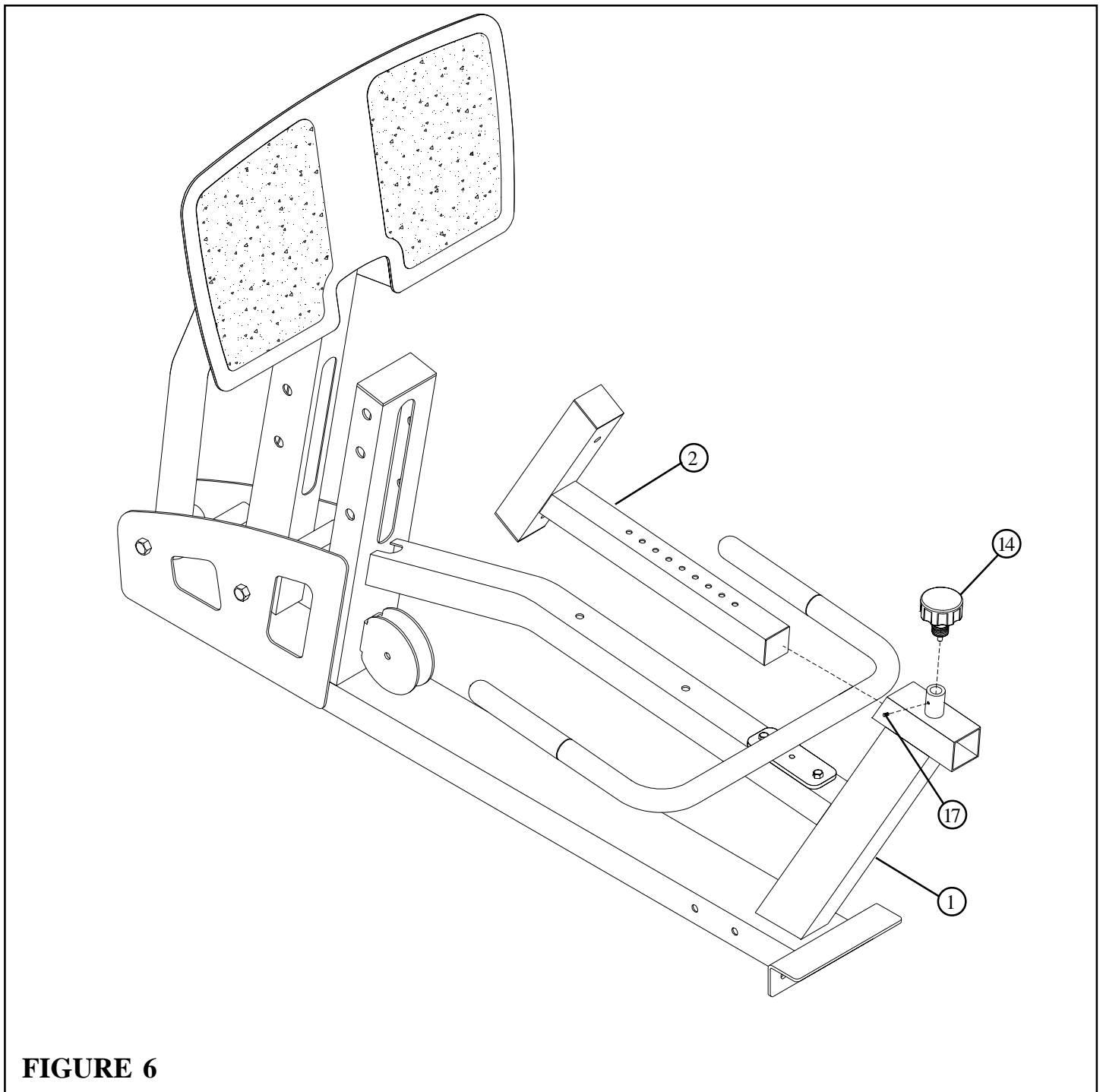


FIGURE 6

STEP 6:

- Securely assemble one PLUNGER PIN (14) to the FRAME (1) as shown. (**NOTE: Screw PLUNGER PIN (14) in all the way**)
- Securely assemble one M4 SET SCREW (17) to the plunger pin barrel on the FRAME (1) then back off 1/4 turn so PLUNGER PIN (14) rotates freely until the threads come in contact with the M4 SET SCREW (17)
- **CAREFULLY** slide the SEAT ADJUST (2) into the FRAME (1) as shown. The SEAT can be adjusted by turning the SPRING PIN KNOB (14) clockwise and pulling. The SEAT can be secured in place by releasing the pin into an adjustment hole and turning clockwise until tight.