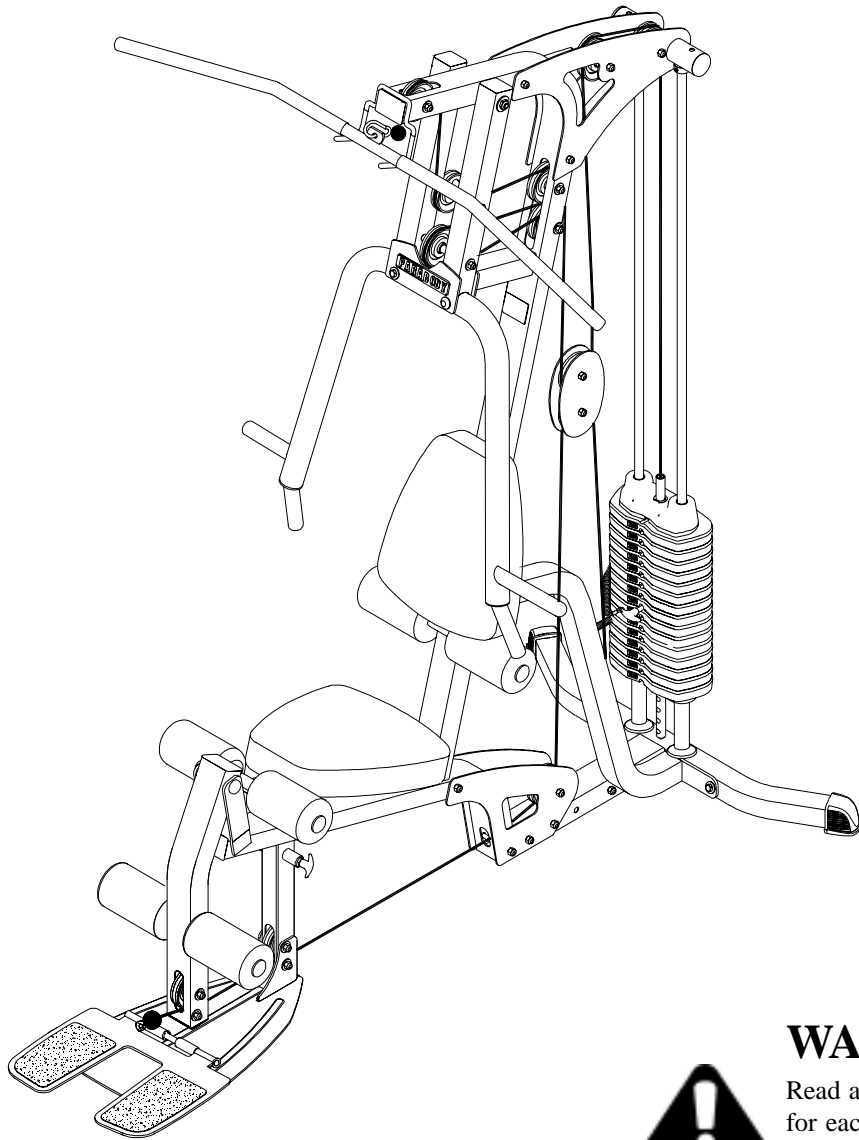


PARABODY®

GS1 GYM SYSTEM



WARNING:

Read and follow all directions for each step to insure proper assembly of this product.



USER'S GUIDE

TABLE OF CONTENTS

Safety Statement.....	2	Parts list.....	5
General Notes.....	3	Assembly Instructions.....	6-20
Tools Required.....	3	General Maintenance.....	21
Gym Layout.....	4	Warranty Statement.....	22
		Product Services.....	23
		Insert-Registration Card	

IMPORTANT SAFETY INFORMATION



THERE IS A RISK ASSUMED BY INDIVIDUALS WHO USE THIS TYPE OF EQUIPMENT. TO MINIMIZE RISK FOLLOW THESE RULES!

1. Before using, read all the warnings and instructions on the use of this machine. Use only for intended exercise. **DO NOT** modify the machine.
2. Obtain a medical exam before beginning any exercise program.
3. Keep body and clothing free of all moving objects.
4. Inspect the machine before use. **DO NOT** use it if it appears damaged. **DO NOT** attempt to fix a broken or jammed machine. Notify your authorized ParaBody dealer before use and have repairs made by an authorized service technician.
5. Be certain that weight pin is completely inserted. Use only the pin provided by the manufacturer. If unsure, call your authorized ParaBody dealer.
6. Never pin the weights or prop plate into an elevated position. **DO NOT** use the machine if found in this condition. **DO NOT** attempt to fix. Notify your authorized ParaBody dealer.
7. Inspect cables and their connections before using machine. Pay particular attention to the cable ends. **DO NOT** attempt to fix. Notify your authorized ParaBody dealer before use and have repairs made by an authorized service technician.
8. Make sure all spring loaded pull pins are fully engaged in the adjustment position and fully tighten thumbscrew before use.
9. Children must not be allowed near this machine. Supervise teenagers.

NOTE: In a continual effort to improve our products, specifications are subject to change
© 2002 Life Fitness, a division of Brunswick Corporation. All rights reserved.
ParaBody is a trademark of Brunswick Corporation

www.parabody.com

IMPORTANT NOTES

Please note:

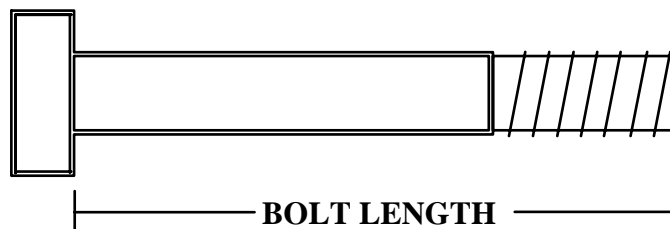
- * Thank you for purchasing the ParaBody GS1 Gym System. Please read these instructions thoroughly and keep them for future reference.
- * This product must be assembled on a flat, level surface to assure its proper function. **DO NOT** securely tighten any frame connections until the entire frame has been assembled, unless otherwise stated.

Tools Required for Assembly

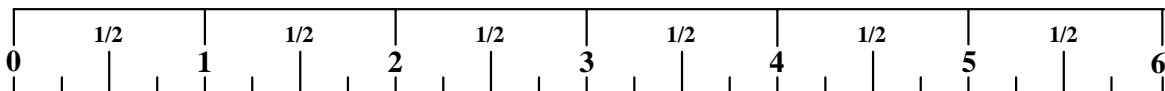
- * Rubber mallet or hammer
- * 3/4" wrench
- * 9/16" wrench
- * Ratchet with 3/4" and 9/16" sockets
- * 5/32" Allen wrench
- * Adjustable wrench
- * Tape measure

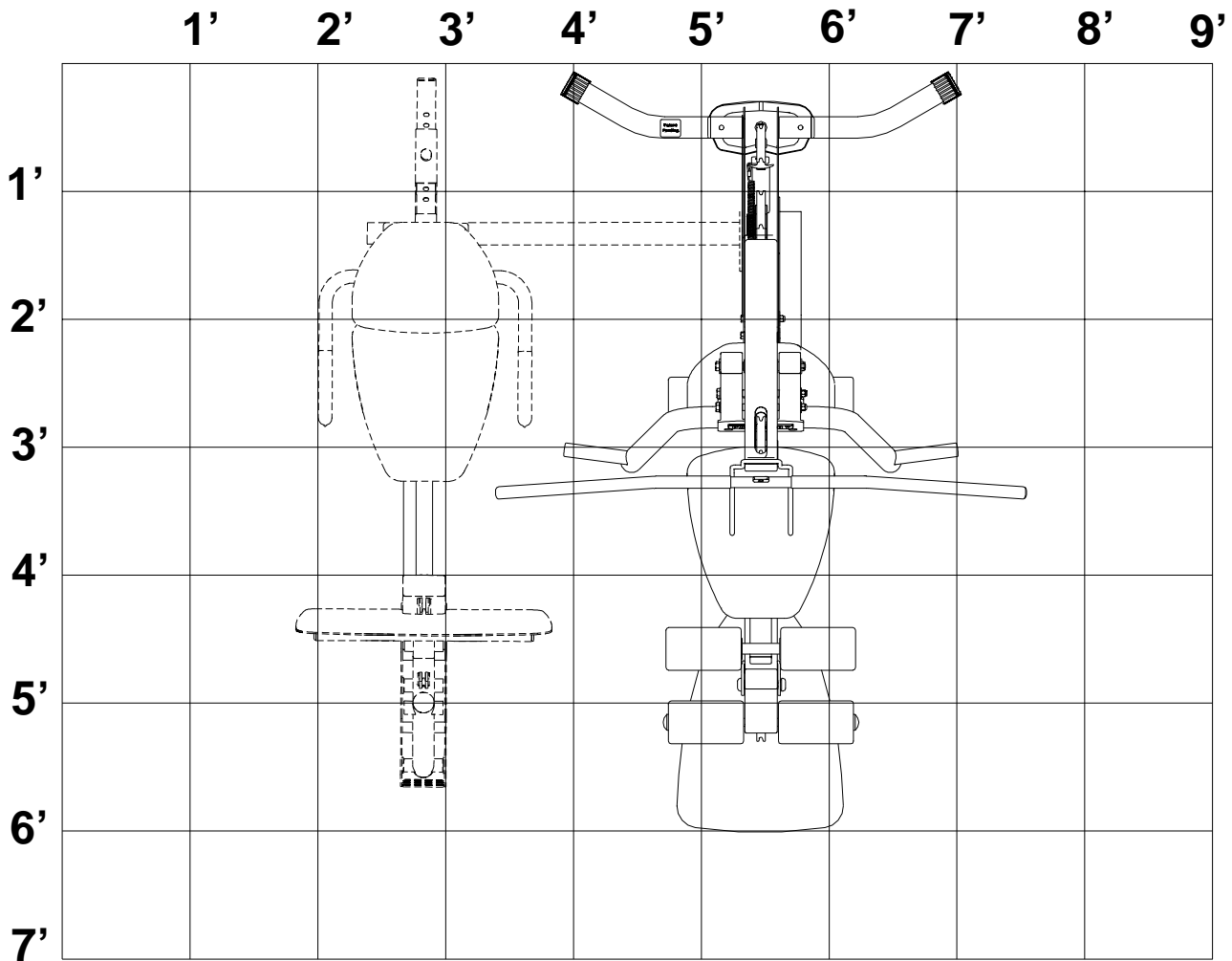
Bolt Length Ruler

NOTE: BOLT LENGTH IS MEASURED FROM THE UNDERSIDE OF THE HEAD OF THE BOLT.



BOLT LENGTH RULER:





1 Square = 1' X 1'

Minimum Required Usable Space

Length = 82 inches (208.5 cm) 6' 10"
 Width = 71 inches (180.5 cm) 5' 11"
 Height = 83 inches (211 cm) 6' 11"

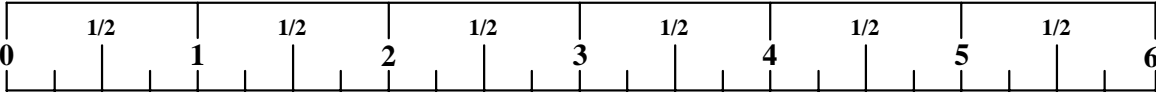
Dimensions Including LP5 Leg Press (optional)

Length = 82 inches (208.5 cm) 6' 10"
 Width = 108 inches (180.5 cm) 9' 0"

PARTS LIST

KEY	PART #	DESCRIPTION	QTY	KEY	PART #	DESCRIPTION	QTY
1	ACU04-1163	FRAME	1	33	ACUDA1E01283413NB	1/2 X 8-3/4" BOLT	1
2	ACU04-1158	BASE	1	34	ACUDB2E03811000B	3/8" LOCK NUT	26
3	ACU02-1060	BASE PLATE	2	35	ACUDB2E01208000B	1/2" LOW HT LOCK NUT	1
4	ACU04-1160	BOOM PLATE LEFT	1	36	ACUDC1250100020B	3/8" FLAT WASHER	22
5	ACU04-1384	BOOM PLATE RIGHT	1	37	ACUDC126013020B	1/2" FLAT WASHER	2
6	ACU04-1344	FRAME BRACE	1	38	ACU04-1171	3-1/2 CABLE GUARD	2
7	ACU04-1100	FOOT PLATE	1	39	ACU06-0363	3/4" PLASTIC WASHER	4
8	ACU04-1098	PRESS ARM	1	40	ACU05-0322	3/4 X 4" SHAFT	1
9	ACU04-1159	PRIMARY PIVOT	1	41	ACU08-0074	3/8 X 3/4" FLANGE SPACER	2
10	ACU04-1162	SEAT ADJUST	1	42	ACU08-0073	3/8 X 1-1/16" FLANGE SPACER	8
11	ACU04-1157	LEG PEDESTAL	1	43	ACU08-0011	3/8 X 1" LG SPACER	4
12	ACU02-1071	PULLEY PLATE	2	44	ACU05-0320	3/8 X 1-1/2" LG SPACER	4
13	ACU07-0135	SEAT/BACK PAD	2	45	ACU04-1165	WEIGHT STACK SPACER	2
14	ACU01-1782	3/4 X 17" TUBE	1	46	ACU06-0047	WEIGHT STACK CUSHION	2
15	ACU6194601	4 X 7" ROLLER PAD	6	47	ACUDA1E03840016NB	3/8 X 4" BOLT	2
16	ACU01-1783	72-3/8" GUIDE ROD	2	48	ACU05-0212	SHAFT COLLAR	2
17	ACU04-1099	LAT BAR	1	49	ACU7308601	WEIGHT STACK LABEL	1
18	ACU01-2009	3/4 X 17-1/2" TUBE	2	50	ACU11-0068	T-HANDLE SPRING PIN	1
19	ACU10-0204ASY	HEAD PLATE ASSY	1	51	ACU11-0060	WEIGHT SELECTOR PIN	1
20	ACU13-0091-2	LAT CABLE	1	52	ACU06-0194	STAR KNOB 3/8	1
21	ACU13-0091-1	LOW CABLE	1	53	ACU05-0017	ADJUSTABLE GLIDE	1
22	ACU7292501	WEIGHT PLATE	15	54	ACU05-0036	STARLOCK COLLAR	6
24	ACU06-0024	3-1/2" PULLEY	12	55	ACU06-0357	RH CAP	2
25	ACU12-0041	ANKLE STRAP	1	56	ACU05-0311	1/2" RH CAP HOLDER WSHR	2
26	ACU05-0193	CHAIN	1	57	ACUDI1080080U	SNAP LINK	3
27	ACUDA1E03813416NB	3/8 X 1-3/4" BOLT	2	58	ACUDB2E01212000B	1/2" LOCK NUT	1
28	ACUDA1E03821216NB	3/8 X 2-1/2" BOLT	1	59	ACU04-0622	LOW ROW BAR	1
29	ACUDA1E03830016NB	3/8 X 3" BOLT	9				
30	ACUDA1E03833416NB	3/8 X 3-3/4" BOLT	15				
31	ACUDA1E03883416NB	3/8 X 8-3/4" BOLT	2				
32	ACUDA1C01210413NB	1/2 X 104mm BOLT	1				

NOTE: SOME OF THE PARTS LISTED MAY BE PRE-INSTALLED



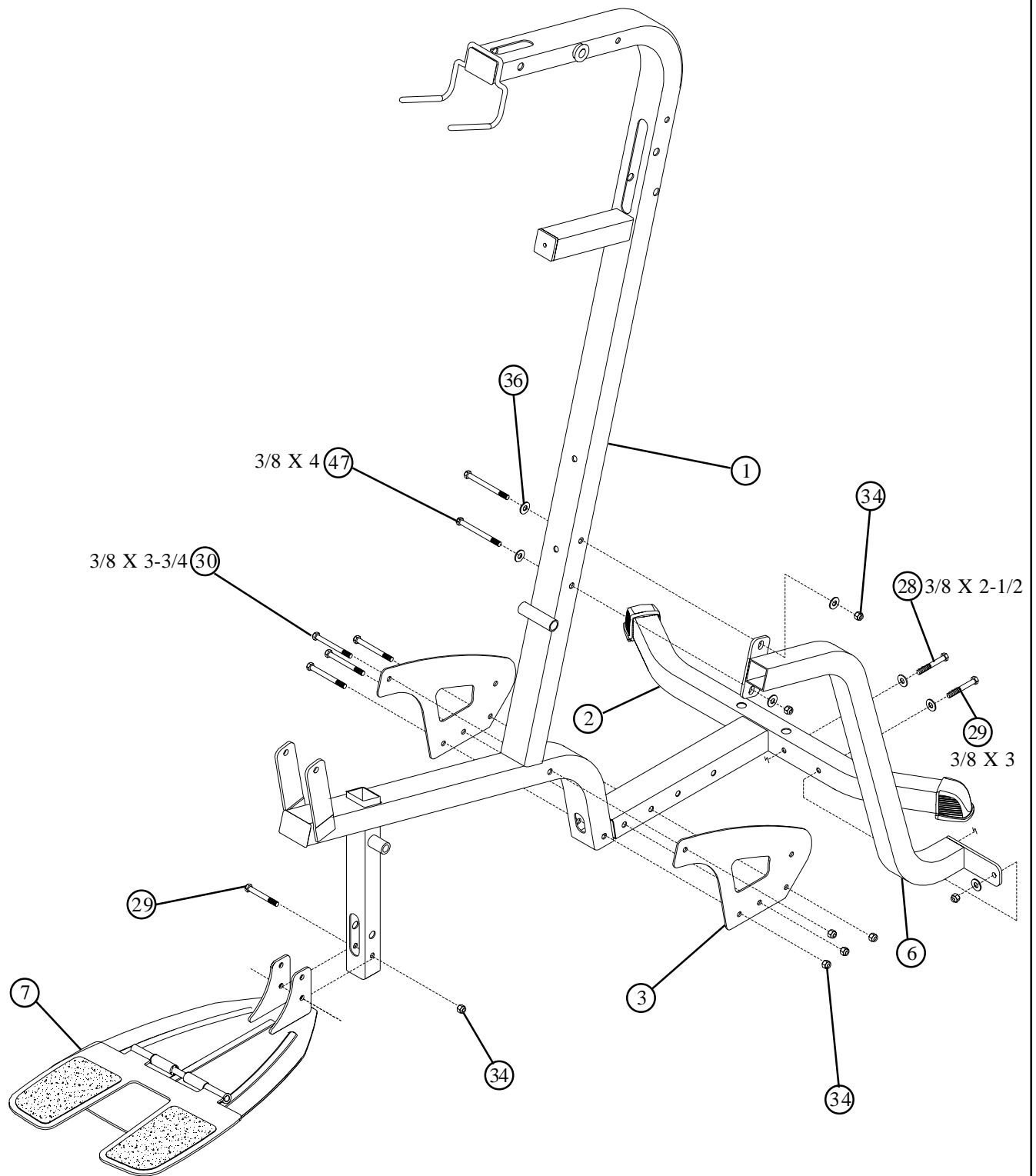


FIGURE 1

STEP 1:

- **LOOSELY** assemble two BASE PLATES (3) to the FRAME (1) and BASE (2) using four 3/8 X 3-3/4" BOLTS (30) and four 3/8" LOCK NUTS (34). See FIGURE 1.
- **LOOSELY** assemble the FOOTPLATE (7) to the lower holes in the FRAME (1) using one 3/8 x 3" BOLT (29) and one 3/8 LOCKNUT (34)
- **LOOSELY** assemble the **TOP** of FRAME BRACE (6) to the FRAME (1) using two 3/8 x 4" BOLT (47), two 3/8 WASHERS (36) and two 3/8 LOCKNUTS (34) Assemble **BOTTOM** of FRAME BRACE (6) to FRAME (2) using one 3/8 x 2-1/2" BOLT (28), one 3/8 x 3 (29), three 3/8 WASHERS (36) and one 3/8 LOCKNUT (34)

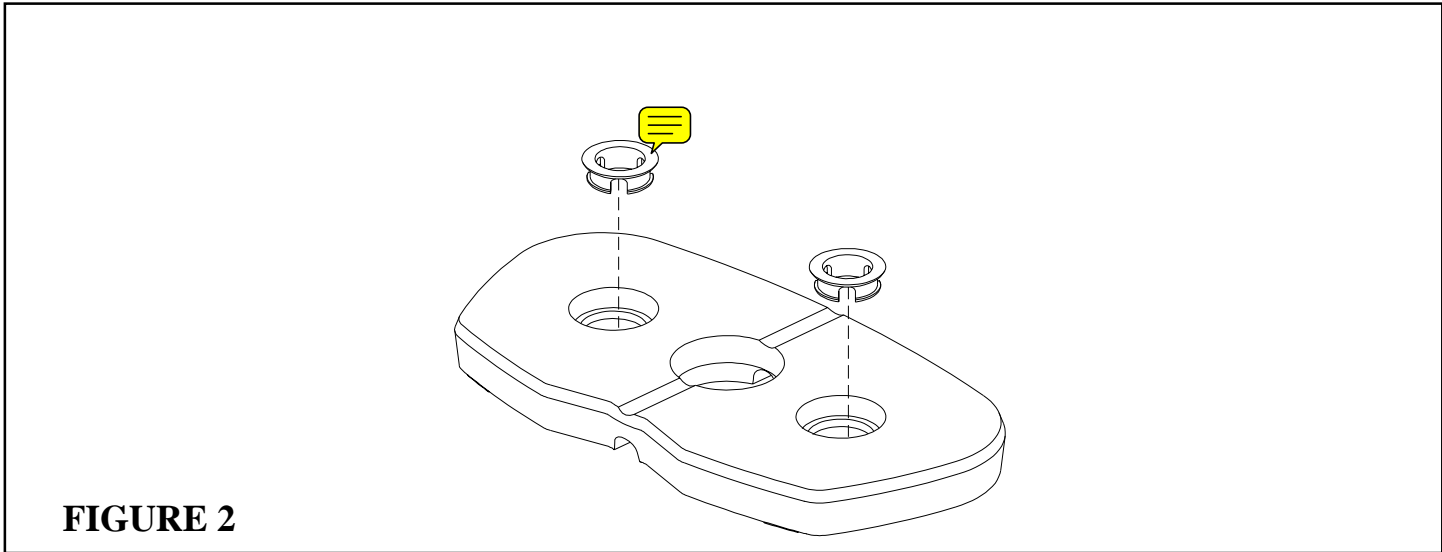


FIGURE 2

• CHECK THAT THE HEADPLATE AND WEIGHT PLATES ARE ASSEMBLED AS SHOWN IN FIGURES 2 & 3

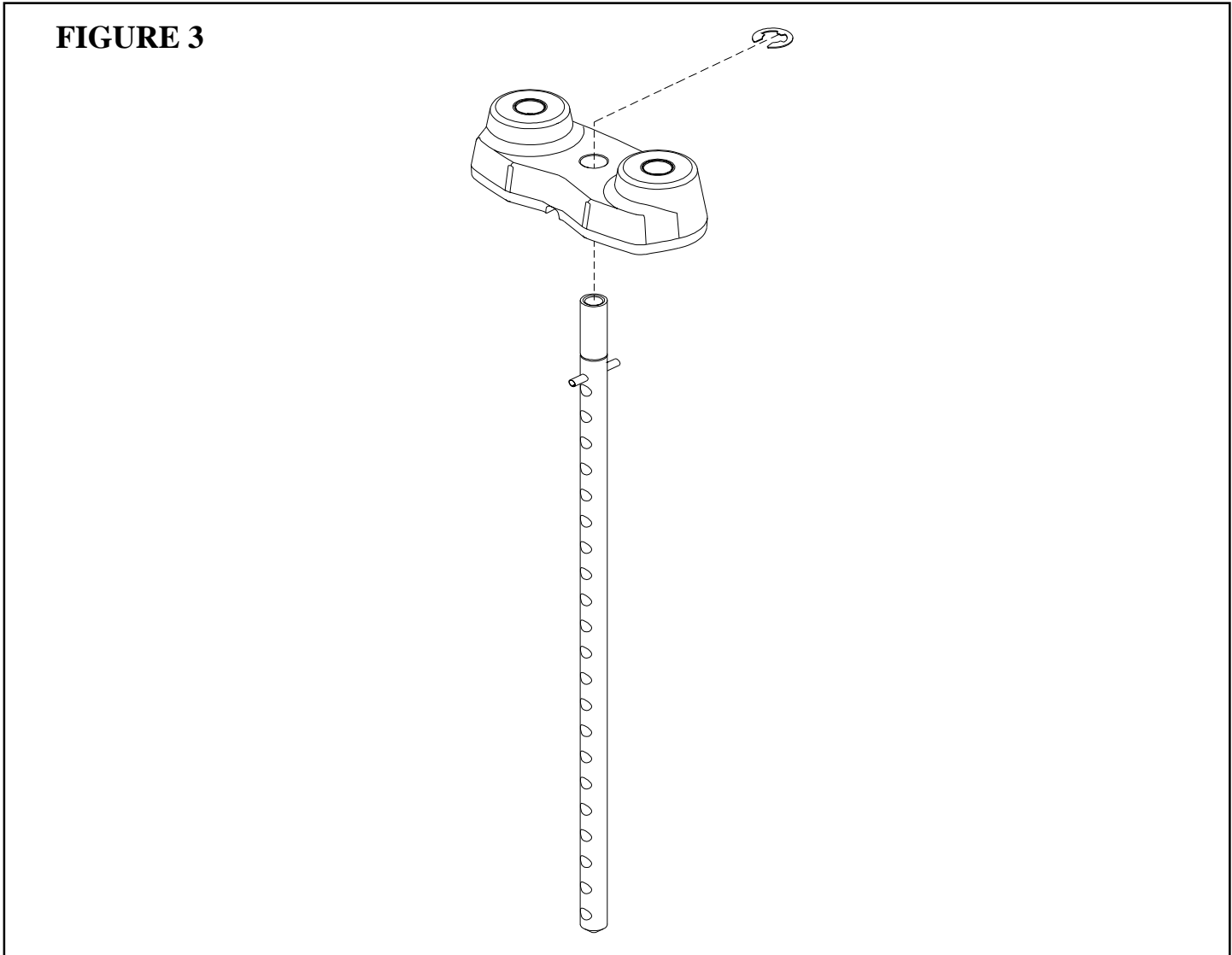


FIGURE 3



STEP 4:

- Insert two GUIDE RODS (16) into the BASE (2) as shown on FIGURE 4. (NOTE: If the GS1 SHROUD OPTION was purchased, place the GUIDE RODS (16) through the BOTTOM SHROUD BRACKET (FOUND IN THE SHROUD KIT BOX) into the BASE (2), as shown in FIGURE 4.
- (NOTE: Lubricate GUIDE RODS (16) with silicon or teflon spray available at most hardware stores.)
- Slide the following items in order down each GUIDE ROD (16), one WEIGHT STACK SPACER (45), and one WEIGHT STACK CUSHION (46)
- Using **EXTREME CARE** slide all fifteen WEIGHT PLATES (22) down the GUIDE RODS (16) onto the WEIGHT STACK CUSHIONS (46). Make sure that the keyholes of the WEIGHT PLATES (22) are all facing the right way.
- Slide the head plate assembly down GUIDE RODS (16) onto the weight stack.
- Slide one SHAFT COLLAR (48) down each GUIDE ROD (16).

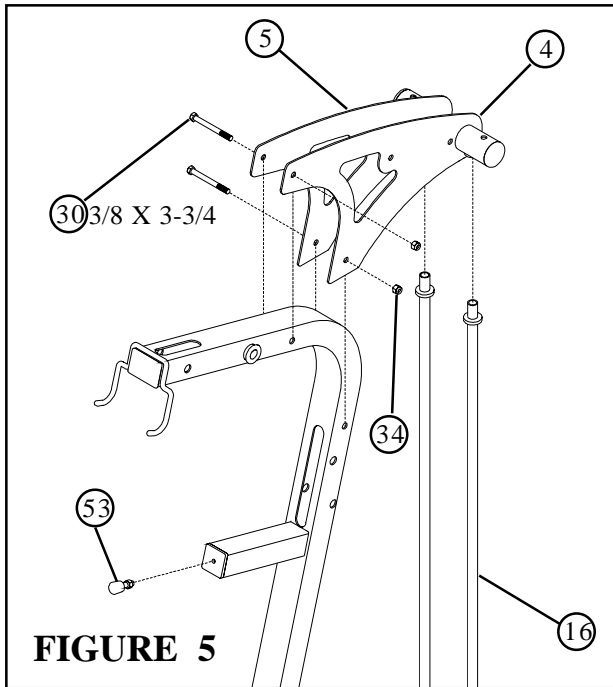


FIGURE 5

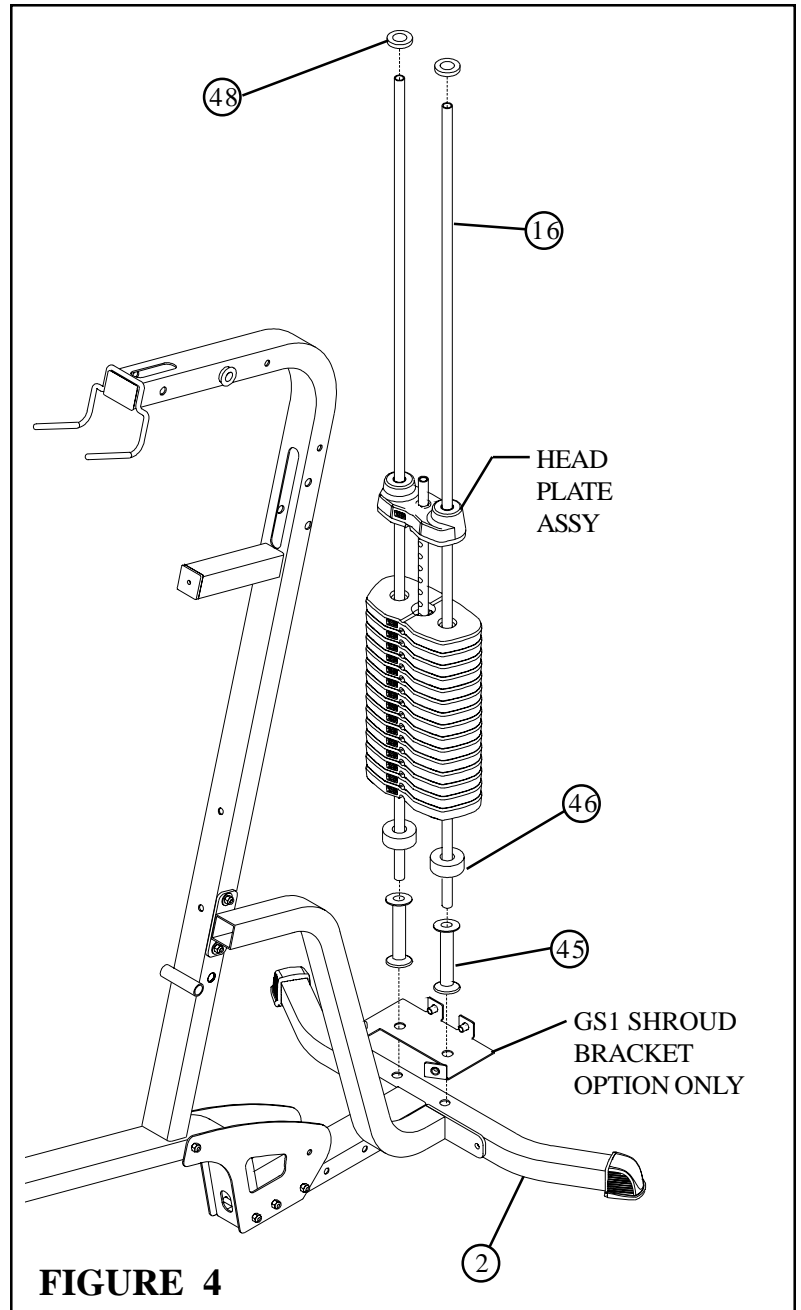


FIGURE 4

STEP 5:



- Carefully slide the RIGHT (5) and LEFT (4) BOOM PLATES onto the GUIDE RODS (16) as shown in FIGURE 5 and loosely assembly BOOM PLATES (5), (4) to frame (1) using two 3/8 x 3-3/4" BOLTS (30) and two 3/8" LOCK NUT (34) [CAUTION MUST BE TAKEN NOT TO PULL GUIDE RODS (16) OUT OF BASE (2)]
- Screw ADJUSTABLE GLIDE (53) approximately 1/2" into FRAME (1) and tighten jam nut securely as shown

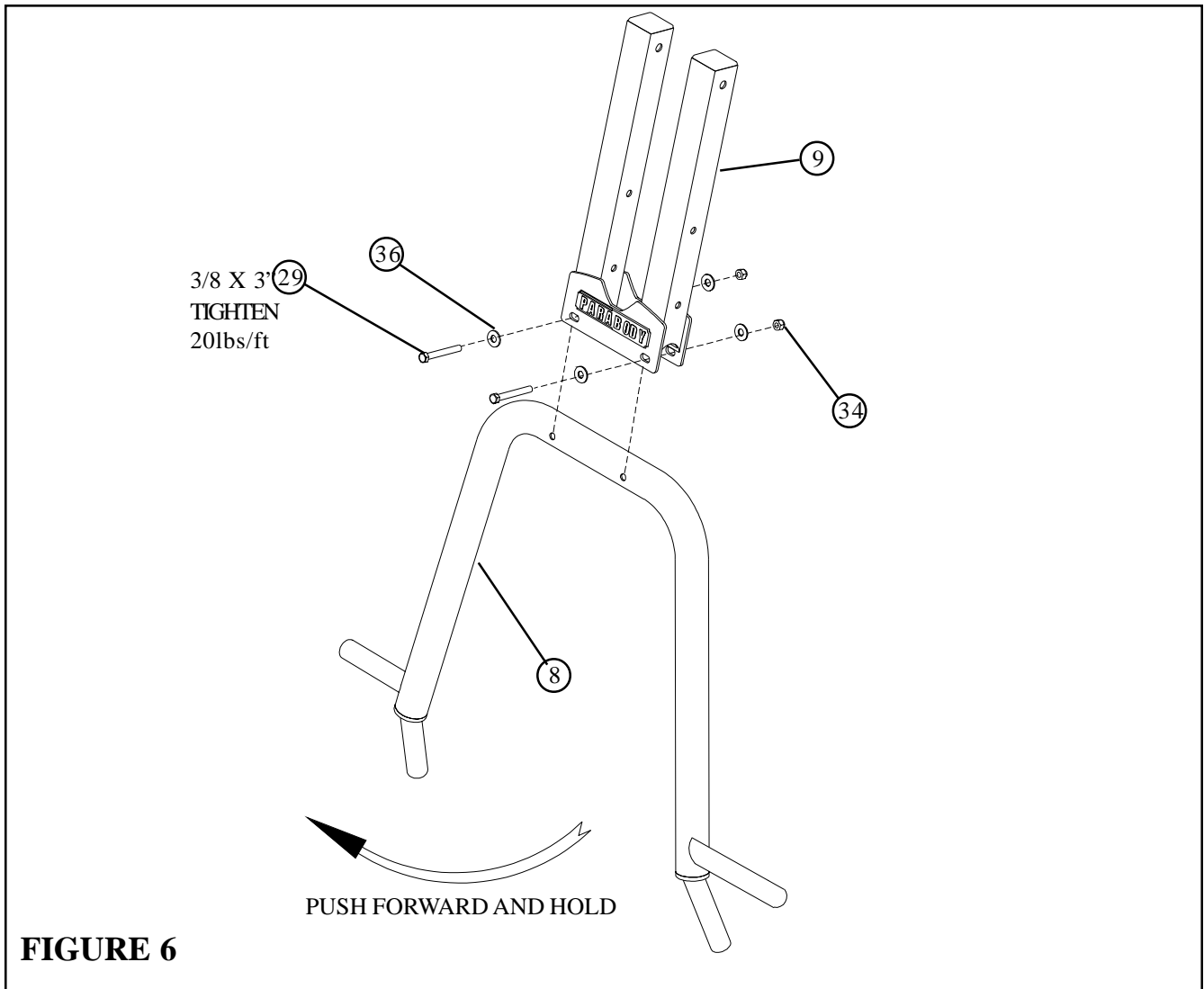
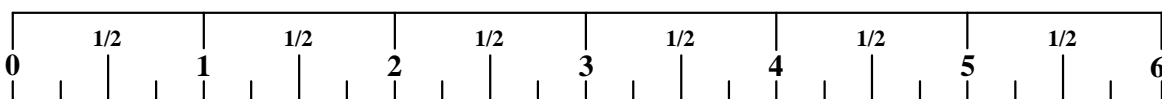


FIGURE 6

STEP 6:

- Place PRESS ARM (8) into PRIMARY PIVOT (9) and insert two 3/8 X 3" BOLTS (29), and two 3/8" FLAT WASHERS (36). While Pushing the PRESS ARM (8) forward, securely tighten the two 3/8 x 3" BOLTS (29) to **20 LBS/FT** of torque using two 3/8" FLAT WASHERS (36) and two 3/8" LOCKNUTS (34)



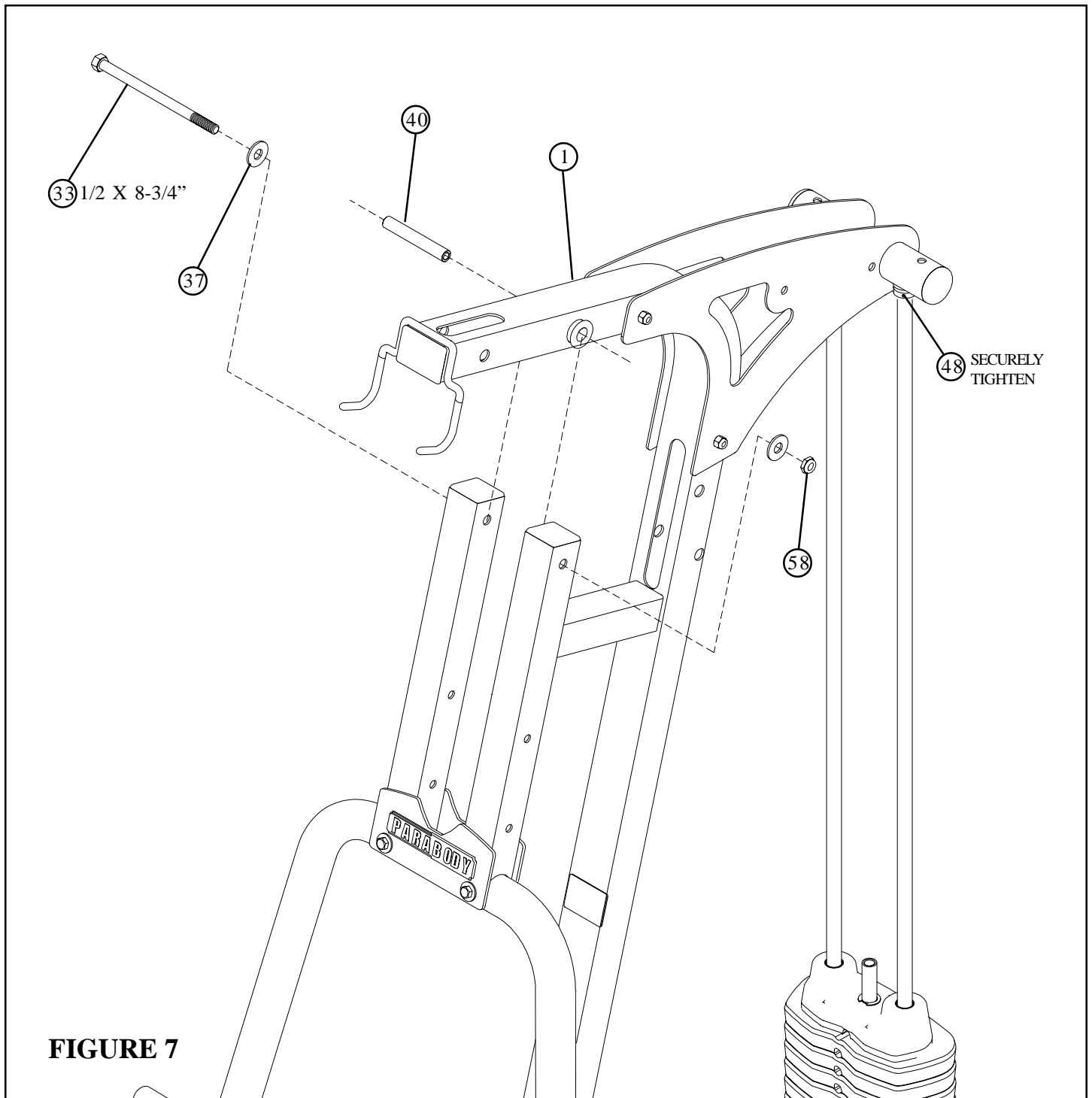
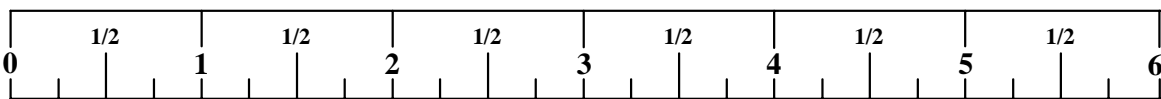


FIGURE 7

STEP 7:

- **SECURELY TIGHTEN ALL FRAME CONNECTION BEFORE PROCEEDING TO NEXT STEP**
- **SECURELY TIGHTEN** top of both SHAFT COLLARS (48) flush to bottom of both BOOM PLATES (4),(5)
- Insert 3/4 x 4" SHAFT (40) into both 3/4" FLANGE BEARINGS on FRAME (1)
- Assemble the PRIMARY PIVOT (9) of the PRESS ARM ASSEMBLY to the top of the FRAME (1) using 1/2 X 8-3/4" BOLT (33), two 1/2" FLAT WASHERS (37) and 1/2" LOCK NUT (58).



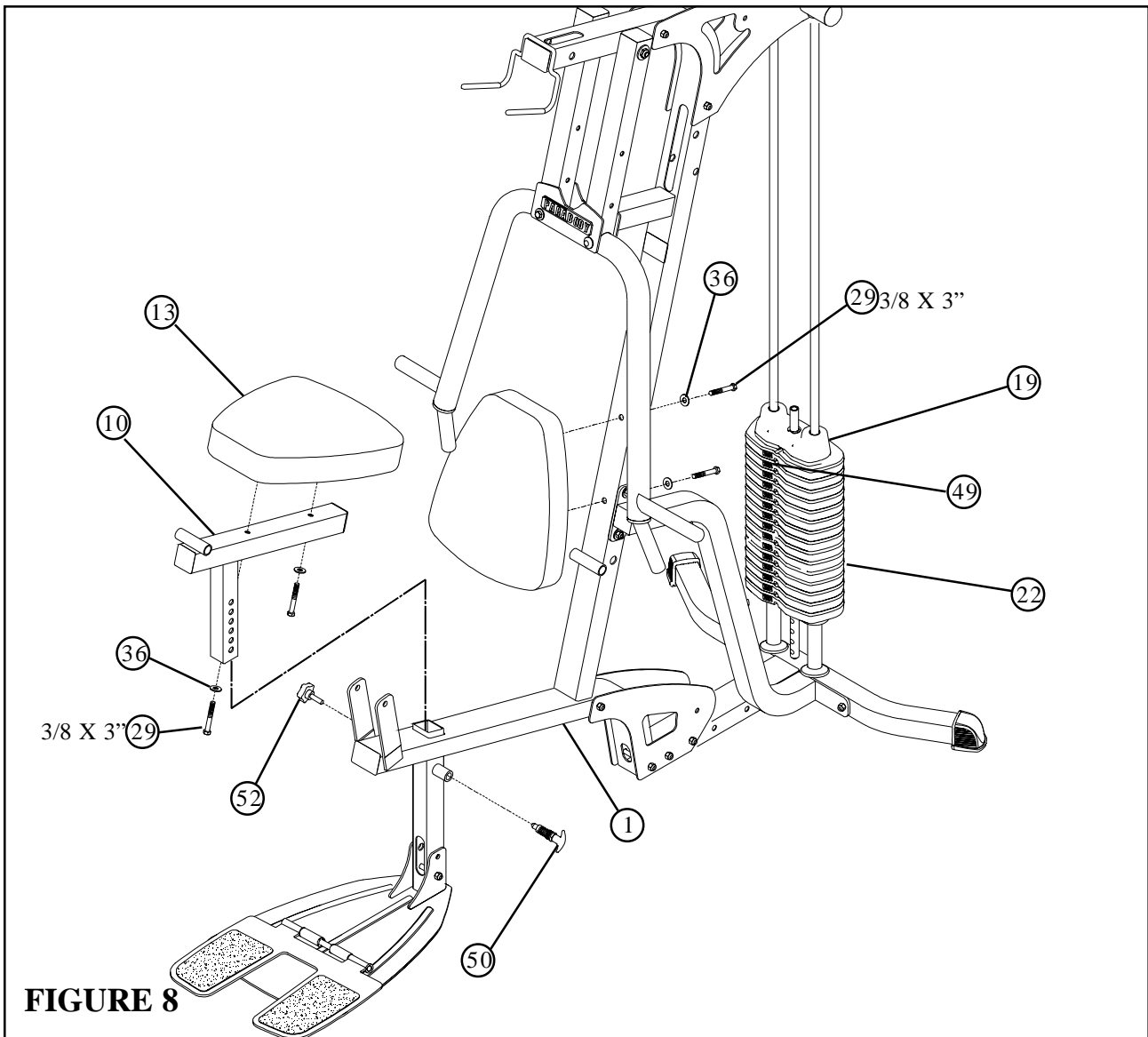


FIGURE 8

STEP 8:

- Apply WEIGHT STACK LABELS (49) to WEIGHTS (22) and HEAD PLATE (19) as shown in FIGURE 8. Begin with number one at the HEAD PLATE (19) with larger numbers in consecutive order towards bottom of weight stack.
- Securely assemble one SEAT PAD (13) to the SEAT ADJUSTMENT (10) using two 3/8 X 3" BOLTS (29) and two 3/8" WASHERS (36) as shown.
- Securely assemble one SEAT PAD (13) to the FRAME (1) using two 3/8 X 3" BOLTS (29) and two 3/8" WASHERS (36) as shown. **The top connection of the FRAME BRACE (6) may have to be loosened and then re-tighten after SEAT PAD (13) is tighten.**
- Gently insert SEAT ADJUSTMENT (10) into tube located on FRAME (1)
- Securely tighten the SPRING PIN (50) to the FRAME (1) and hand tighten the STAR KNOB (52)

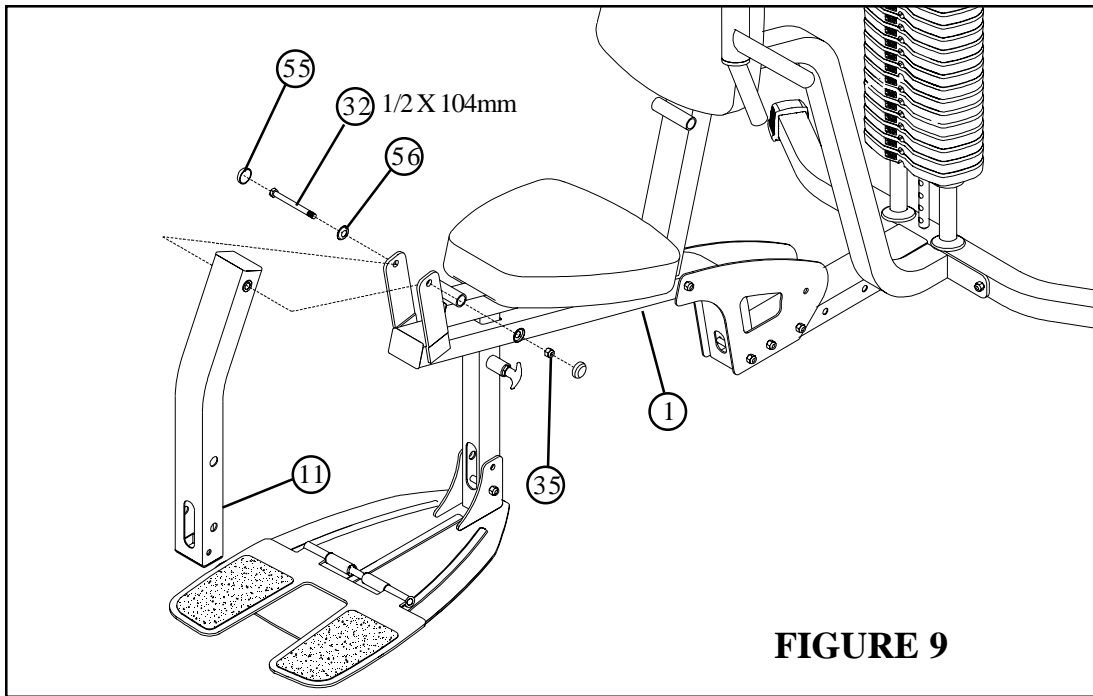


FIGURE 9

STEP 9:

- Assemble the LEG PEDESTAL (11) to the FRAME (1) using one 1/2 X 104mm BOLT (32), two RH WASHERS (56) and one 1/2" LOW HT LOCK NUT (35)
- Assemble two RH CAPS (55) to the 1/2" RH WASHERS (56) as shown in FIGURE 9

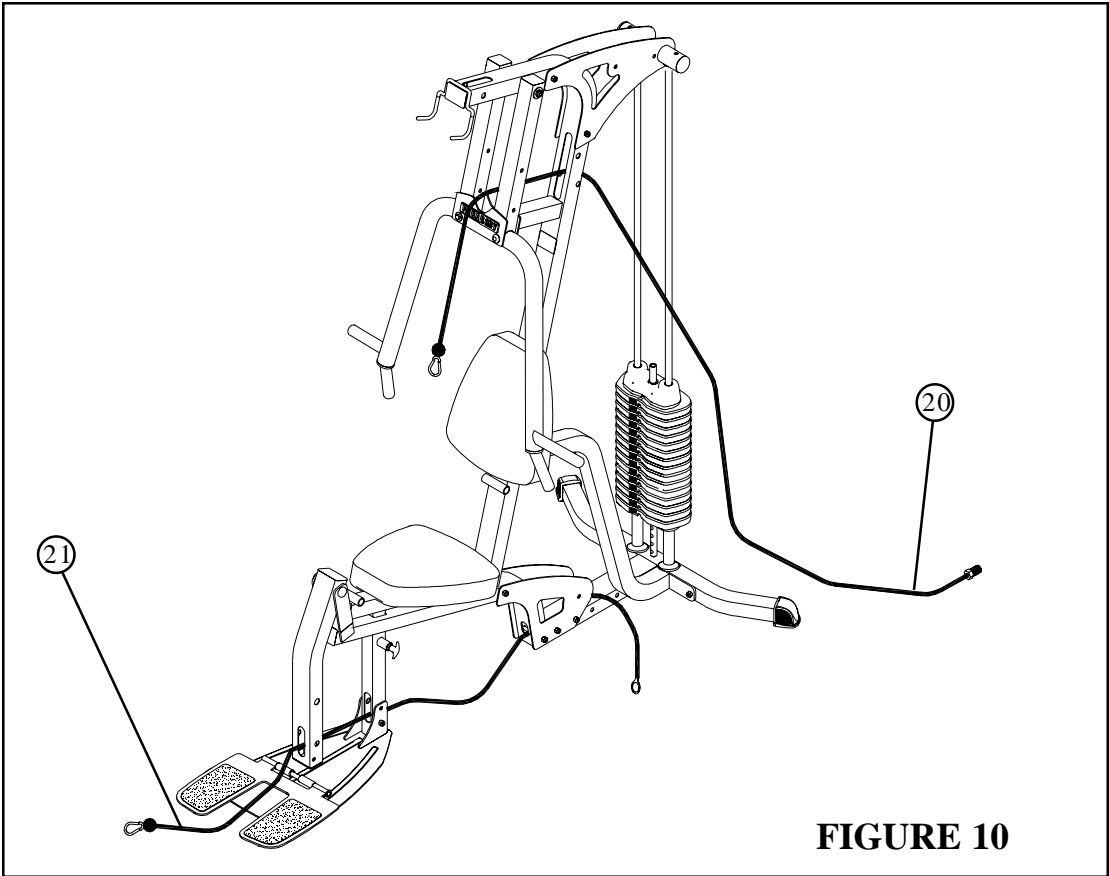
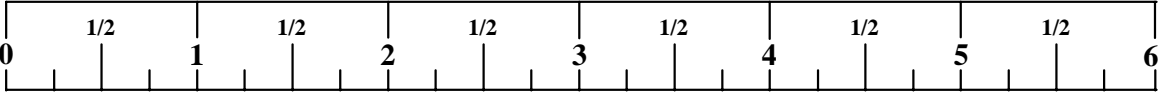
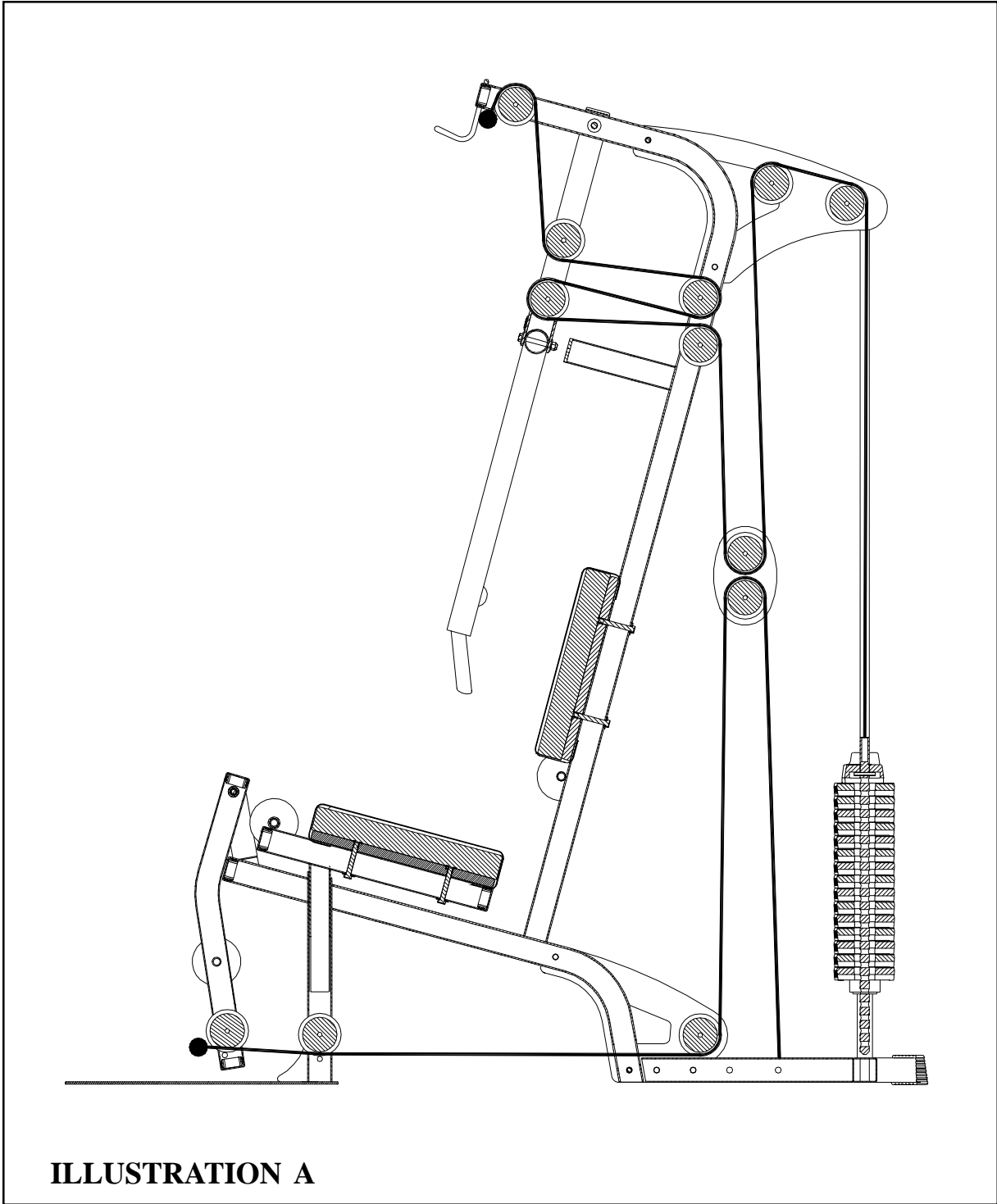


FIGURE 10

STEP 10:

- Route LAT CABLE (20) and LOW CABLE (21) as shown in FIGURE 10





- ILLUSTRATION “A” used as cable routing reference for steps 12-15

NOTE: IF YOU PURCHASED A LEG PRESS, PLEASE REFER TO THE CABLE ROUTING INSTRUCTIONS INCLUDED WITH THE LEG PRESS KIT

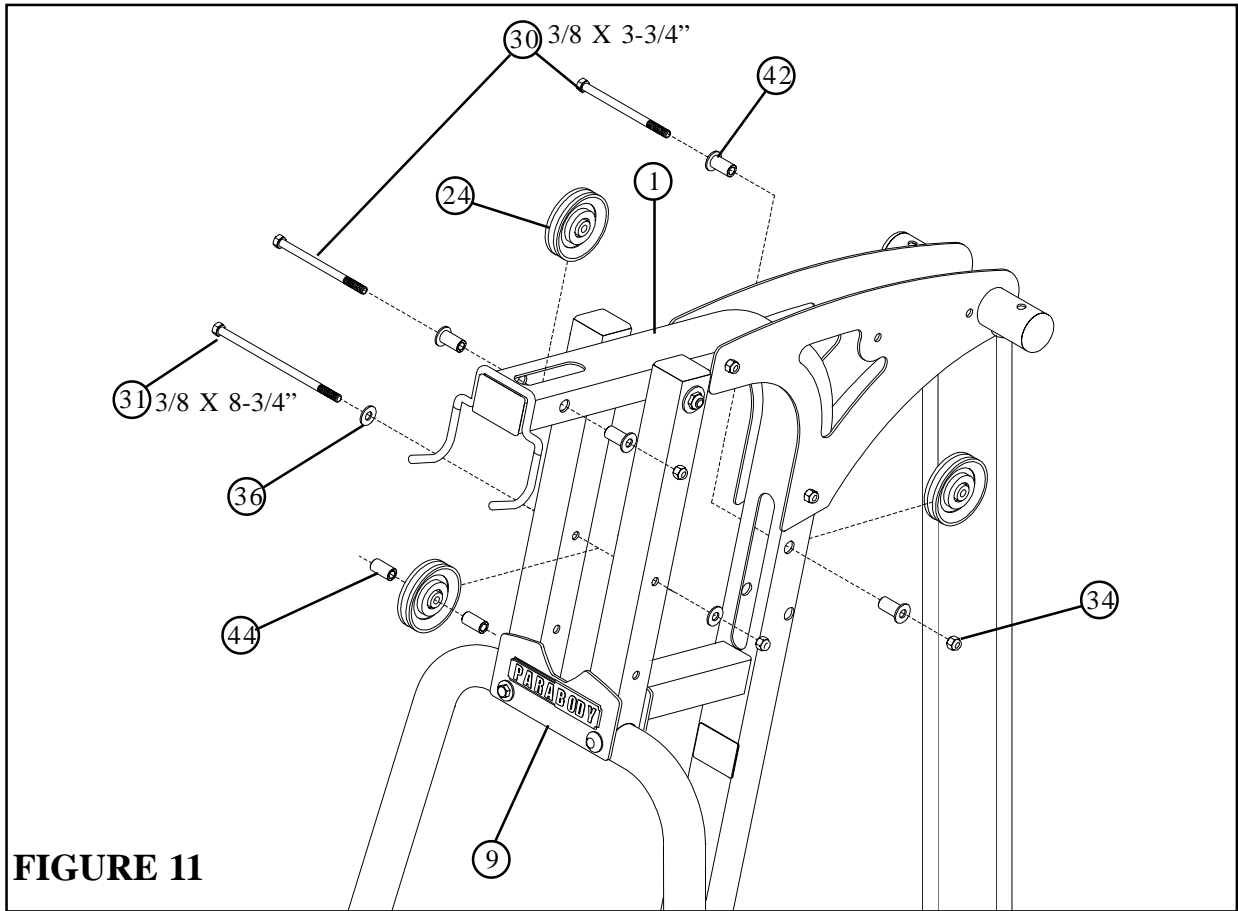
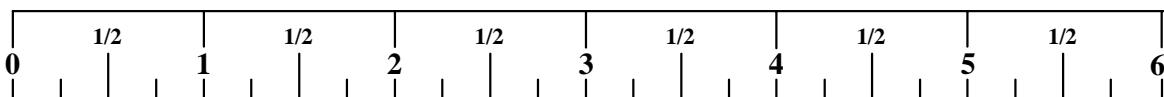


FIGURE 11

STEP 11:

- Refer to cable ILLUSTRATION “A” on page 13 for cable routing while installing pulleys.
- Assemble two 3-1/2” PULLEYS (24) into FRAME (1) using two 3/8 X 3-3/4” BOLTS (30), four 3/8 X 1-1/16” FLANGE SPACERS (42) and two 3/8” LOCK NUTS (34) and tighten securely.
- Assemble one 3-1/2” PULLEY (24) into PRIMARY PIVOT (9) upper hole using one 3/8 X 8-3/4” BOLT (31), two 3/8” FLAT WASHERS (36), two 3/8 X 1-1/2” SPACERS (44) and one 3/8” LOCK NUT (34) and tighten securely



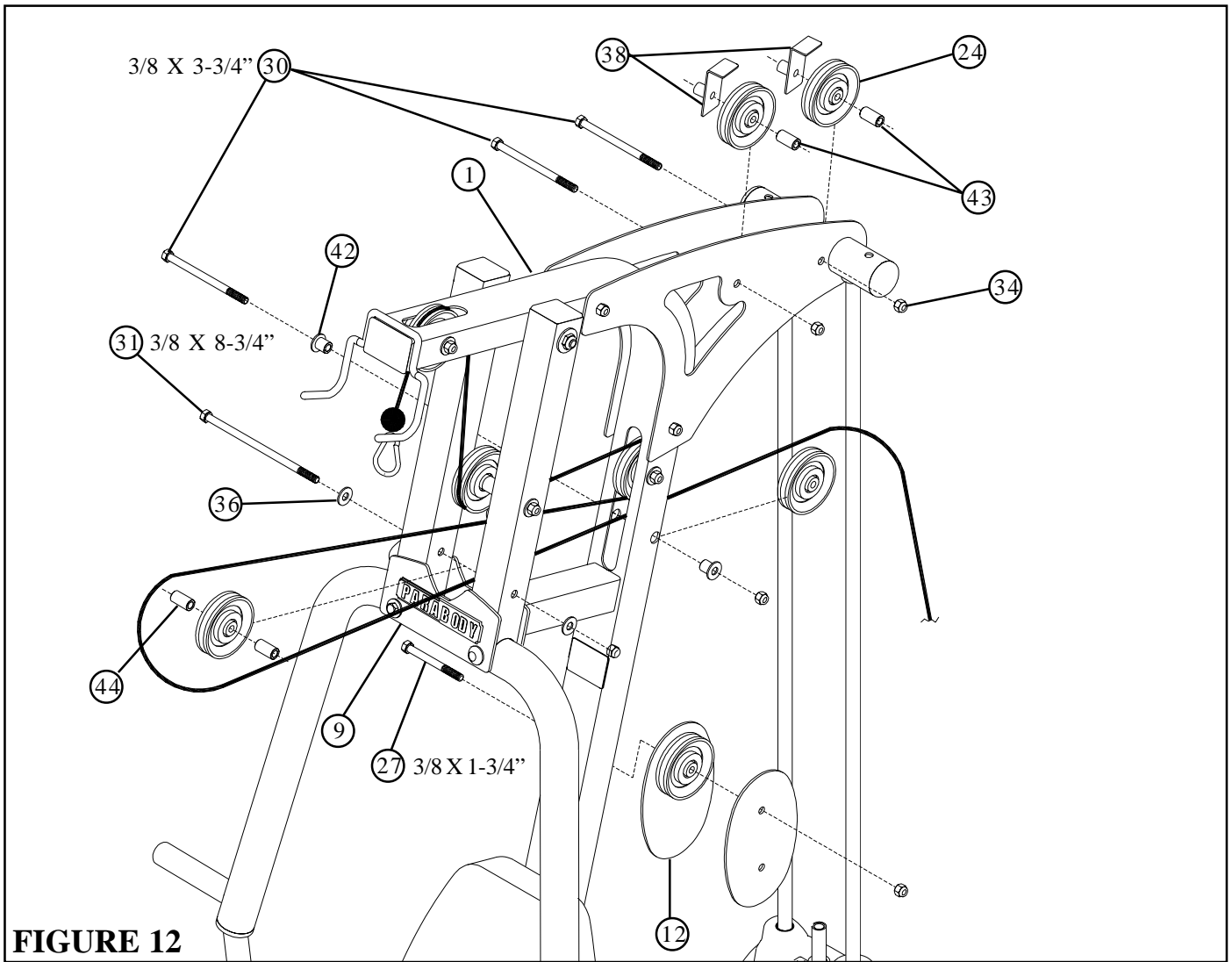
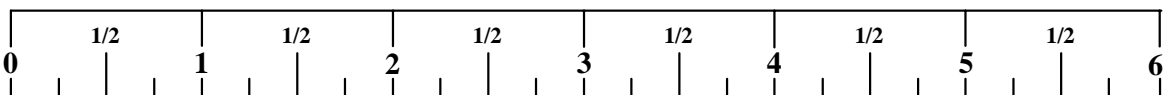
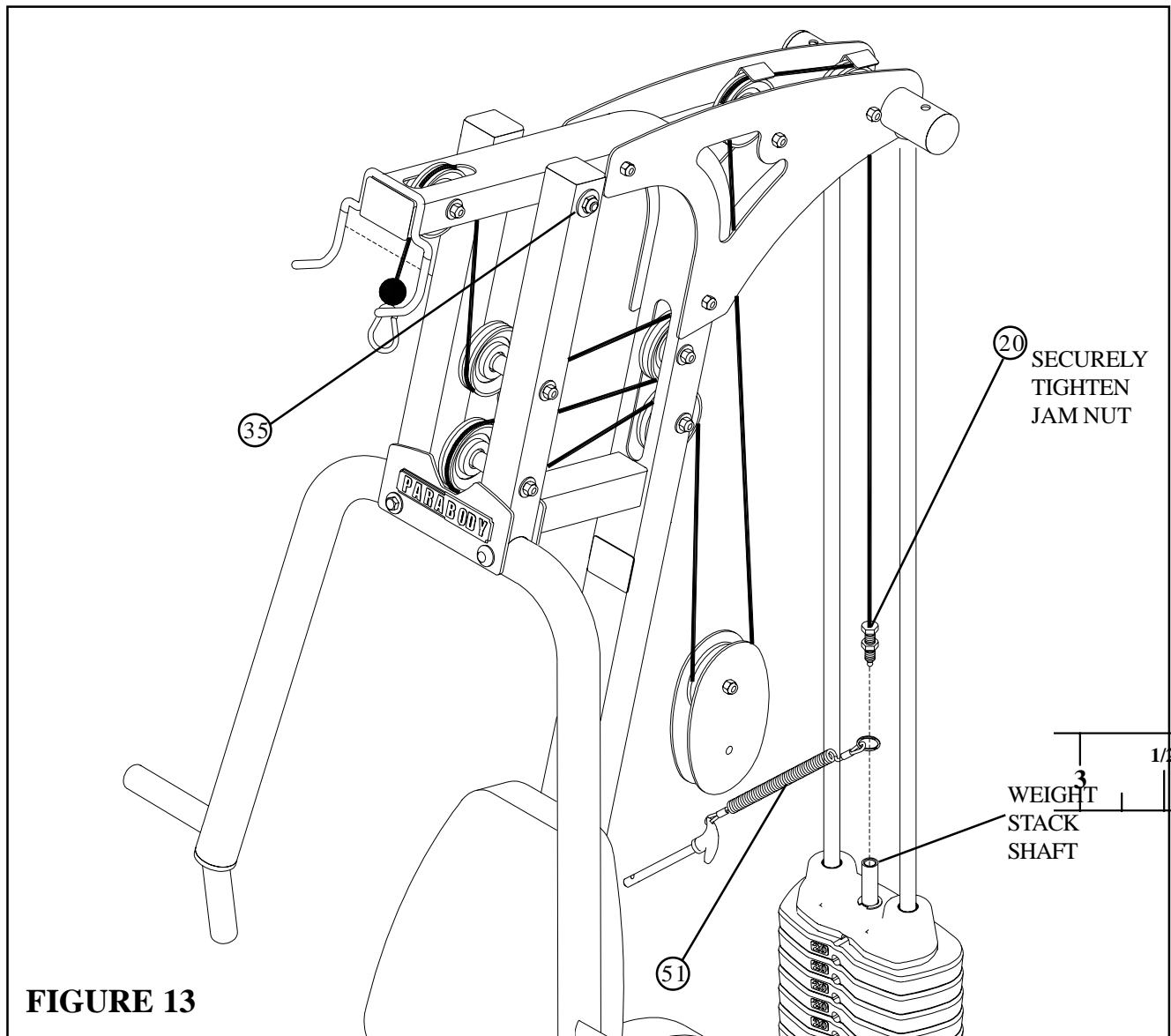


FIGURE 12

STEP 12:

- Refer to cable ILLUSTRATION “A” on page 13 for cable routing while installing pulleys.
- Assemble one 3-1/2” PULLEY (24) into the PRIMARY PIVOT (9) lower hole using one 3/8 X 8-3/4” BOLT (31), two 3/8” FLAT WASHERS (36), two 3/8 X 1-1/2” SPACERS (44) and one 3/8” LOCK NUT (34) and tighten securely.
- Assemble one 3-1/2” PULLEY (24) to the FRAME (1) using one 3/8 X 3-3/4” BOLT (30), two 3/8 X 1-1/16” FLANGE SPACERS (42), one 3/8” LOCK NUT (34) and tighten securely
- Loosely assemble one 3-1/2” PULLEY (24) between PULLEY PLATES (12) using one 3/8 X 1-3/4” BOLT (27) and one 3/8” LOCK NUT (34).
- Assemble two 3-1/2” PULLEYS (24) between the left and right BOOM PLATES (4) and (5) using two 3/8 X 3-3/4” BOLTS (30), two 3/8 X 1” SPACERS (43), two 3-1/2” CABLE GUARDS (38) and two 3/8” LOCK NUTS (34)





STEP 13:

- Slip ring of WEIGHT SELECTOR PIN (51) down WEIGHT STACK SHAFT and insert pin into one of the weights
- Screw end of LAT CABLE (20) into top of PLATE SHAFT (18) and securely tighten JAM NUT as shown in FIGURE 13
- Securely tighten 1/2" LOCK NUT (35) on PRIMARY PIVOT of PRESS ARM (9).

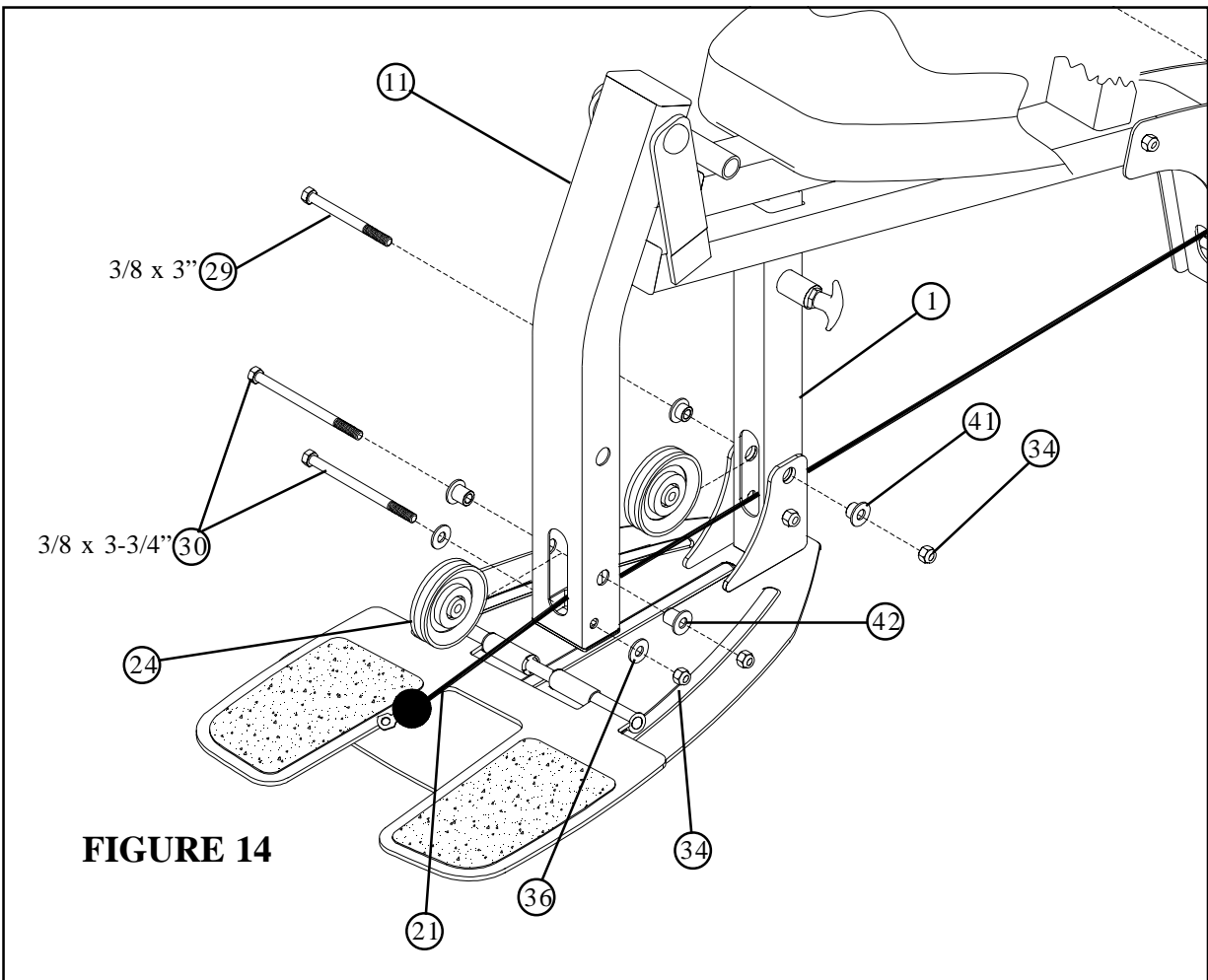
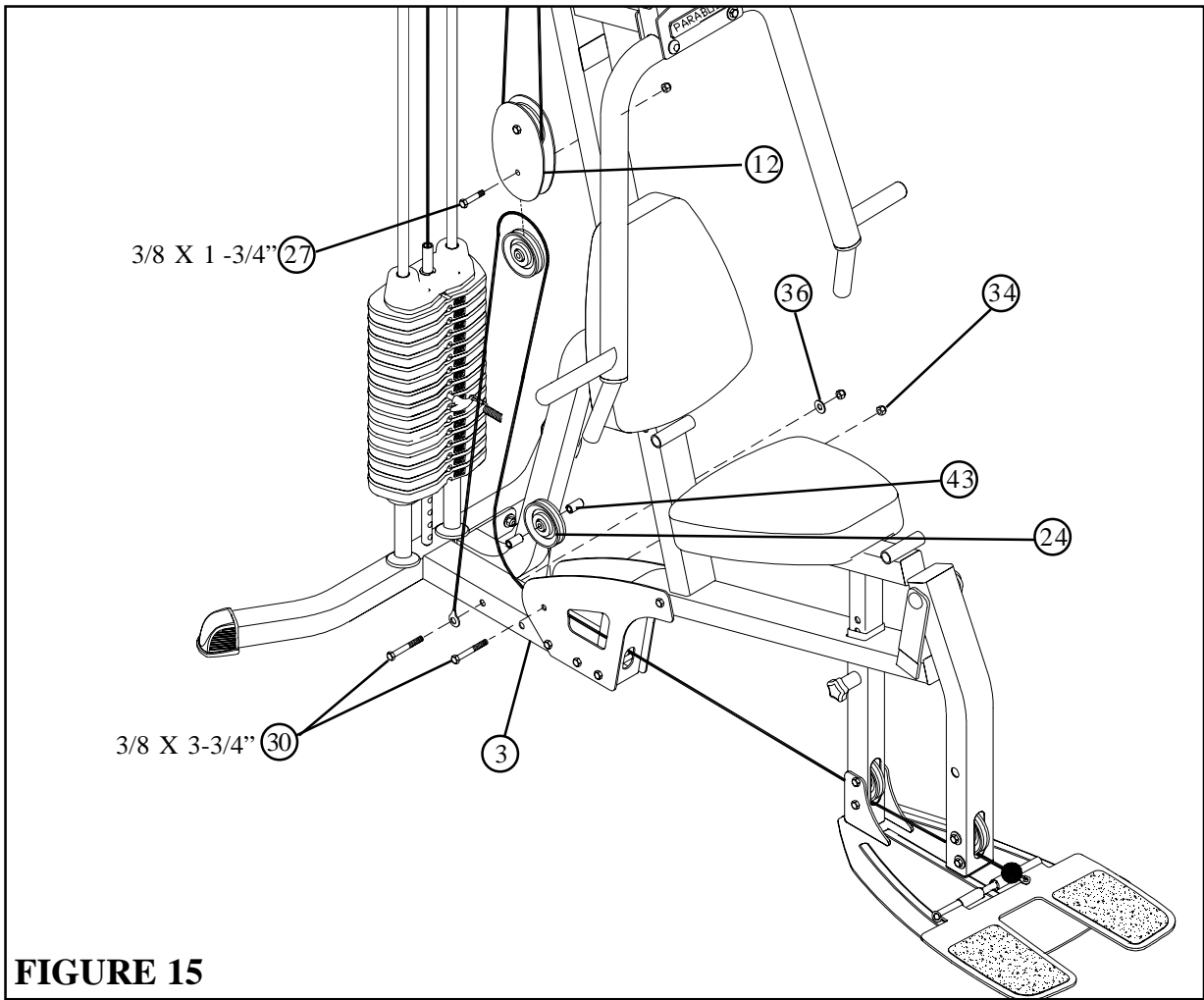


FIGURE 14

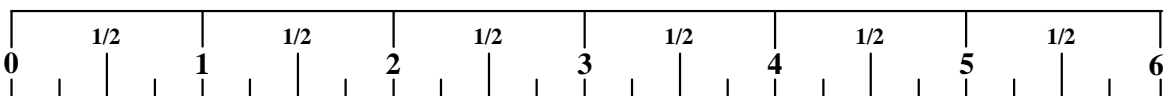
STEP 14:

- Refer to cable ILLUSTRATION “A” on page 13 for cable routing while installing pulleys.
- [CABLE MUST BE POSITIONED BETWEEN PULLEY AND LOWER BOLT ASSEMBLY ON LEG PEDESTAL (11) AND FRAME (1)]
- Securely assemble the ball end of the LOW CABLE (21) and one 3-1/2” PULLEY (24) to the LEG PEDESTAL (11) using two 3/8 X 3-3/4” BOLTS (30), two 3/8” X 1-1/16” FLANGE SPACERS (42), two 3/8” WASHERS (36), and two 3/8” LOCKNUTS (34). (NOTE: The LEG CABLE (21) should be routed over the retaining bolt as shown in FIGURE 14.)
- Securely assemble one 3-1/2” PULLEY (24) and two 3/8 X 3/4 FLANGE SPACERS (41) to the FRAME (1) using one 3/8 X ” BOLTS (29), and one 3/8” LOCKNUT (34). (NOTE: The LEG CABLE (21) should be routed over the retaining bolt as shown in FIGURE 14.)



STEP 15:

- Refer to cable ILLUSTRATION “A” on page 13 for cable routing while installing pulleys.
- Assemble one 3-1/2” PULLEY (24) between BASE PLATES (3) using one 3/8 X 3-3/4” BOLT (30), two 3/8 X 1” SPACERS (43), one 3/8” LOCK NUT (34) and tighten securely.
- Loosely assemble one 3-1/2” PULLEY (24) between the PULLEY PLATES (12) using one 3/8 X 1-3/4” BOLT (27), and one 3/8” LOCK NUT (34).
- Secure end of LOW CABLE (21) using one 3/8 x 3-3/4” BOLT (30), one 3/8” FLAT WASHER (36) and one 3/8” LOCK NUT (34) as shown in FIGURE 15
- Tighten both 3-1/2” PULLEYS (24) located on PULLEY PLATES (12)



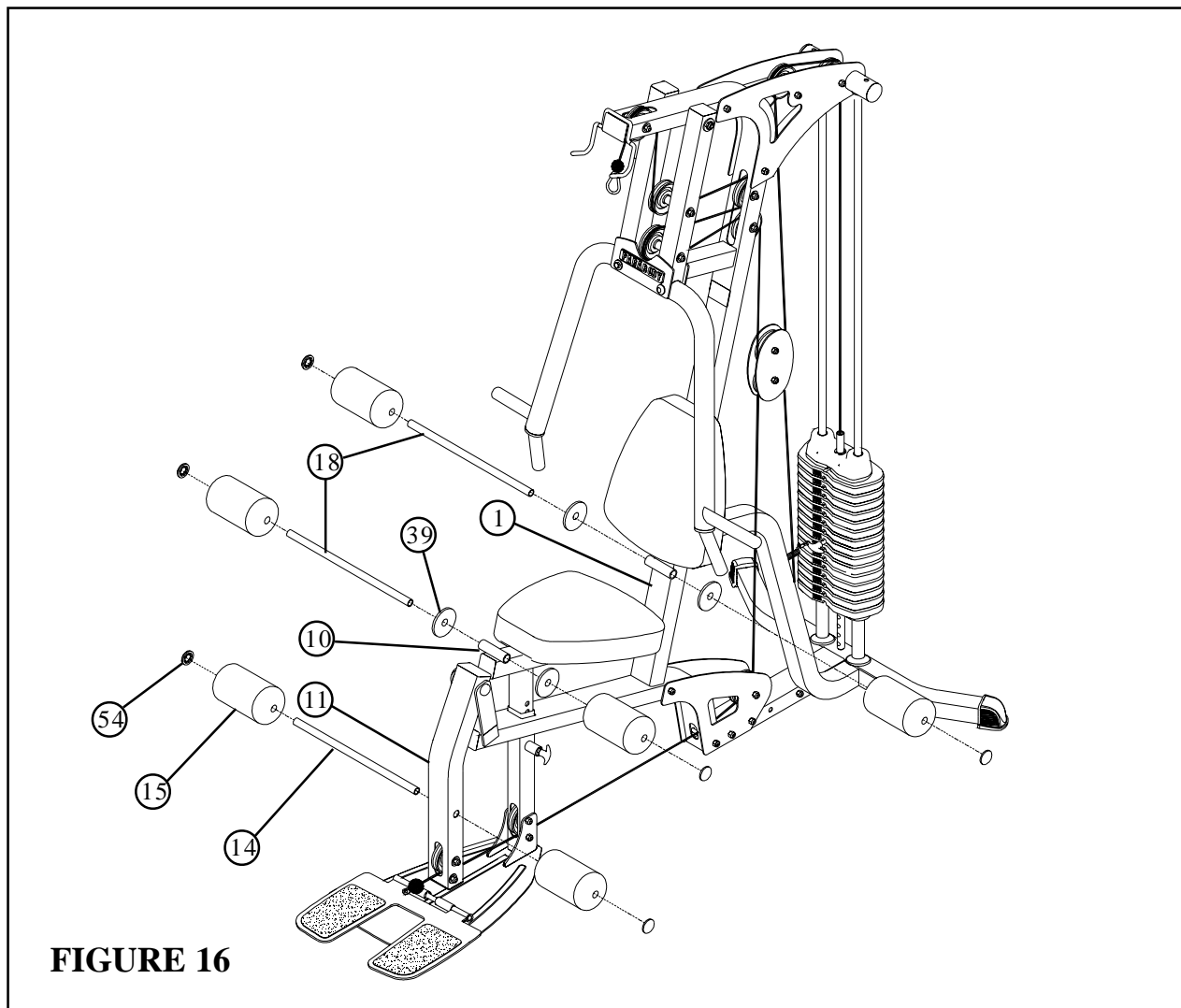
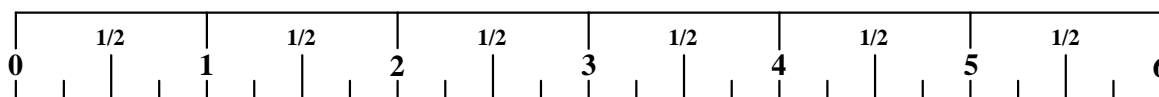


FIGURE 16

STEP 16:

- Attach two 4 X 7" ROLLER PADS (15) to the LEG PEDESTAL (11) using one 3/4 X 17" TUBE (14) and two 3/4" STARLOCK COLLARS (54) as shown in FIGURE 16.
- Attach two 4 X 7" ROLLER PADS (15) to the SEAT ADJUST (10) using one 3/4 X 17-1/2" TUBE (18), two PLASTIC WASHERS (39) and two 3/4" STARLOCK COLLARS (54) as shown in FIGURE 16.
- Attach two 4 X 7" ROLLER PADS (15) to the FRAME (1) using one 3/4 X 17-1/2" TUBE (18), two PLASTIC WASHERS (39) and two 3/4" STARLOCK COLLARS (54) as shown in FIGURE 16.



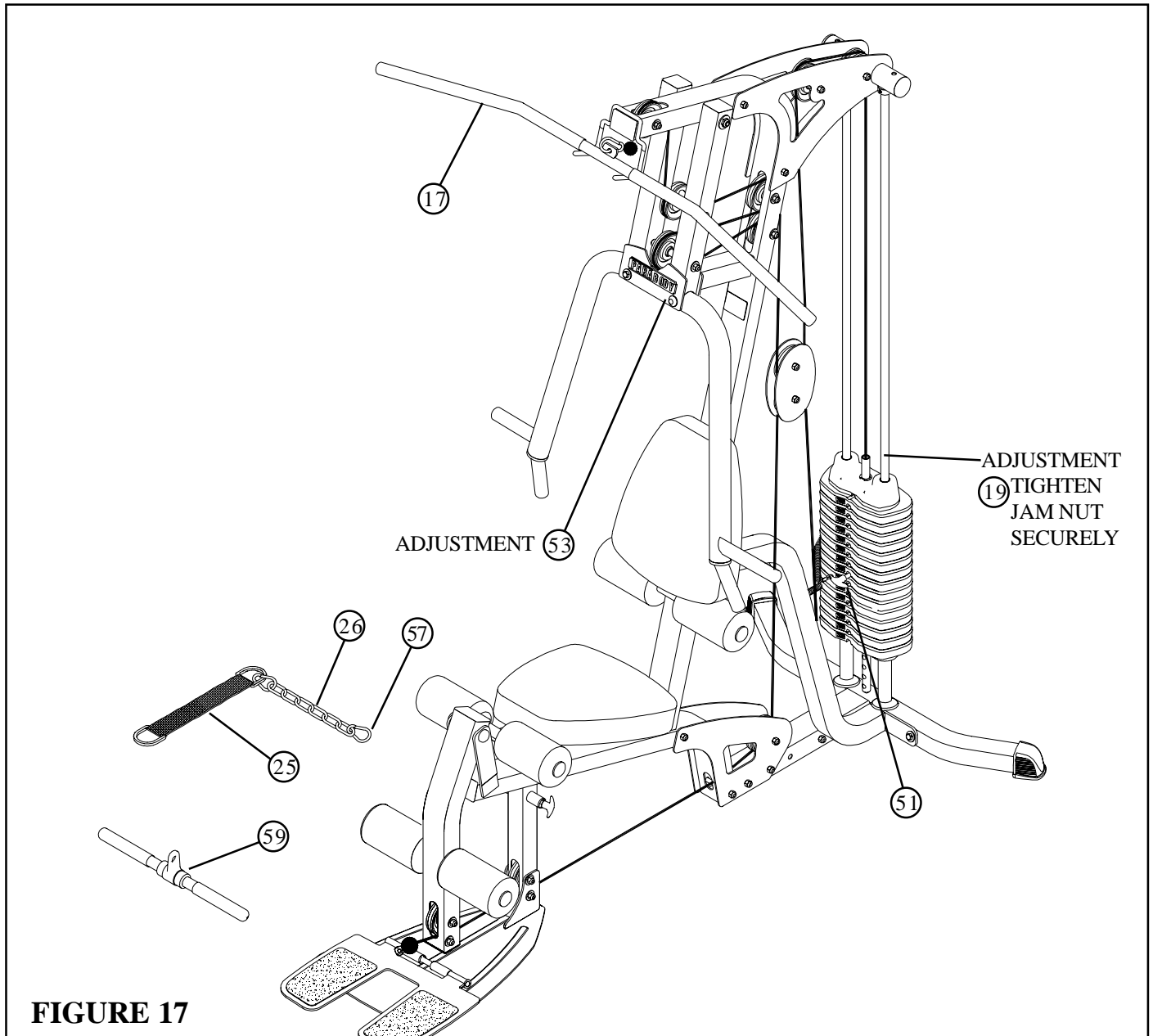


FIGURE 17

STEP 17:

- If upon completion of assembly, the HEAD PLATE (19) does not sit on top of the first WEIGHT PLATE (22), push the HEAD PLATE (19) down, insert the WEIGHT SELECTOR PIN (51) and perform several repetitions at the press station. This will relax the cable system and prevent the HEAD PLATE (19) from lifting up. See FIGURE 17
- If after completing previous step, the HEAD PLATE (19) still does not sit on top of the first WEIGHT PLATE (22) or if there is excess slack in the cable system, adjust the threaded end of the LAT CABLE (20) and ADJUSTABLE GLIDE (53) accordingly and retighten the jam nuts. See figure 17
- For maximum performance, the HEAD PLATE (19) should just barely sit on the top WEIGHT PLATE (22)
- Attach the LAT BAR (17) to the ball end of LAT CABLE (20) using one SNAP LINK (57) as shown in FIGURE 17.
- Attach the ANKLE STRAP (25) to the 12 LINK CHAIN (26) using two SNAP LINKS (57) as shown in FIGURE 17

Thank you for purchasing the ParaBody GS1 Gym System. If unsure of proper use of equipment, call your local ParaBody distributor or call the ParaBody customer service department at (800) 328-9714

MAINTENANCE

Please note:

- * We recommend cleaning your product (pads and frame) on a regular basis, using warm soapy water. Touch-up paint can be purchased from your ParaBody customer service representative at (800) 328-9714.

- * Inspect equipment daily. Tighten all loose connections and replace worn parts immediately. Failure to do so may result in serious injury

- * Lubricate guide rods with a teflon based (or equivalent) lubricant on a regular basis

- * **PLEASE RECORD THE INFORMATION REQUESTED BELOW. IN THE EVENT YOU MAY NEED SERVICE YOU WILL BE ASKED FOR THIS INFORMATION. REMEMBER TO FILL OUT YOUR WARRANTY REGISTRATION CARD AND MAIL BACK.**

MODEL # _____

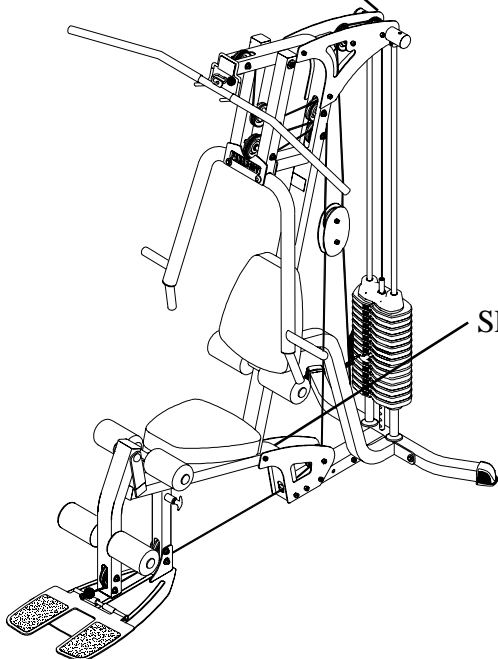
SERIAL # _____

DATE OF PURCHASE: _____

DEALERS NAME: _____

DEALERS PHONE # _____

SERIAL NUMBER LOCATED ON
PULLEY BRACKET



SERIAL NUMBER LOCATION

Thank you for purchasing the ParaBody GS1 Gym System.

LIMITED WARRANTY

ParaBody extends the following LIMITED WARRANTY to the original owner of the ParaBody products. The Warranty terms apply to IN HOME USE ONLY.

1. **LIMITED WARRANTY ON FRAME AND WELDS.** If the frame of the ParaBody product or a weld should crack or break, it will be repaired or replaced by ParaBody. Terms: Lifetime – for so long as the Customer owns the ParaBody product.
2. **LIMITED WARRANTY ON PARTS.** If the following parts are defective in material or workmanship, ParaBody will supply replacement parts: all bolts, nuts, washers, bearings, bushings, pulleys, thumbscrews, collars, cable retaining clips, adjustable pre-stretch slides, roller pad shafts, allen head bolts, weight selector pin, weight stack shaft, set screws, protector caps, adjustment chain, cotter pin, plunger, spring and knob. Terms: Lifetime – for so long as the Customer owns the ParaBody product.
3. **LIMITED WARRANTY ON CABLES AND UPHOLSTERY.** If the coated cables or upholstery are defective in material or workmanship, ParaBody will repair or replace them, at its option. Terms: Three (3) years.
4. **CONDITIONS AND EXCEPTIONS.** Any product misuse, abuse or alteration, any attempt to repair by a person other than an authorized ParaBody Service Center, any improper assembly, accident, or any other condition resulting from occurrences beyond the control of ParaBody will void this Limited Warranty.
5. **REPLACEMENT AND REPAIR EXPENSES.** ParaBody will provide only replacement parts or repair under this warranty. The Owner is responsible for all other costs. Such costs may include, but are not limited to: a. labor charges for service, removal, repair or reinstallation of the ParaBody product or any component part; b. shipping, delivery, handling and administrative charges for returning parts to ParaBody; and c. all necessary or incidental costs related to installation of the replacement parts.
6. **SHIPPING.** If shipping by the Owners is deemed necessary (in sole discretion of ParaBody), parts should be shipped in their original carton or equivalent packaging, fully insured with shipping charges prepaid. ParaBody will not assume any responsibility for any loss or damage incurred in shipping.
7. **CLAIM PROCEDURES.** If service on your ParaBody product is required during the warranty period, please contact our Customer Service Department at 1-800-328-9714 for instructions regarding returning or replacing parts. Please have available the following information: (i) the dealer's name; (ii) the date of purchase; (iii) the serial # (s) of your product (the serial number location is called out on the final assembly drawing included with your assembly instruction); (iv) a description of the nature of the problem.
8. **OWNER'S RIGHT.** This Limited Warranty gives you specific legal rights. You may also have other rights, which vary depending on local law.
9. **LIMITATION OF IMPLIED WARRANTIES.** All implied warranties, except to the extent prohibited by applicable law, shall have no greater duration than the warranty period set forth above. There are no warranties which extend beyond the description in this Limited Warranty. Because local laws do not allow limitations on how long an implied warranty lasts, the above limitations may not apply to you.
10. **DISCLAIMER.** No other express warranty has been made or will be made on behalf of ParaBody with respect to any ParaBody product or the operation, repair or replacement of any ParaBody product. ParaBody shall not be responsible for injury, loss of use of the ParaBody product, inconvenience, loss or damage to personal property, whether direct or indirect, and incidental or consequential damages, so the above limitation or exclusion may not apply to you.

NOTES:

LIFE FITNESS CONSUMER DIVISION

14150 Sunfish Lake Blvd. Ramsey Minnesota, 55303 U.S.A.

Tel: 763.323.4500 Fax: 763.323.4797

800.328.9714 (Toll-free within the U.S. and Canada)

www.parabody.com

INTERNATIONAL OFFICES

Life Fitness Atlantic BV
Atlantic Headquarters
Bijdorpplein 25-31
2992 LB Barendrecht
The Netherlands
Phone: (180) 646 666
Fax: (180) 646 703

Life Fitness (UK) Ltd.
Queen Adelaide
Ely, Cambs CB7 4UB
United Kingdom
Phone CSS: (01353) 665507
Fax CSS: (01353) 666719

Life Fitness EUROPE GmbH
Siemensstrasse 3
85716 Unterschleissheim
Germany
Phone: (089) 31 77 51-0
Fax: (089) 31 77 51 99

Life Fitness Benelux N.V.
Bijdorpplein 25-31
2992 LB Barendrecht
The Netherlands
Phone: 31 (180) 64 66 69
Fax: 31 (180) 64 66 99

Life Fitness Italia S.R.L.
Via Elvas 92
39042 Bressanone
Italy
Phone: 39 (472) 835-470
Fax: 39 (472) 833-150

Life Fitness Japan
8/F, Nippon Brunswick Building
5-27-7 Sendagaya
Shibuya-Ku, Tokyo 151-0051
Japan
Phone: 81 (3) 3359-4309
Fax: 81 (3) 3359-4307

Life Fitness Asia Pacific Limited
Room 2610, Miramar Tower
132 Nathan Road, Tsimshatsui
Kowloon, Hong Kong
Phone: (852) 2891-6677
Fax: (852) 2575-6001

Life Fitness Do Brazil
Al. Rio Negro, 433-Predio 2-Sala 2
3º andar (Confab)
Aplhavelle-Barueri-Sao Paulo
CEP: 06454-904
Brazil
Phone: 55 (11)7295-2217
Fax: 55 (11) 7295-2218