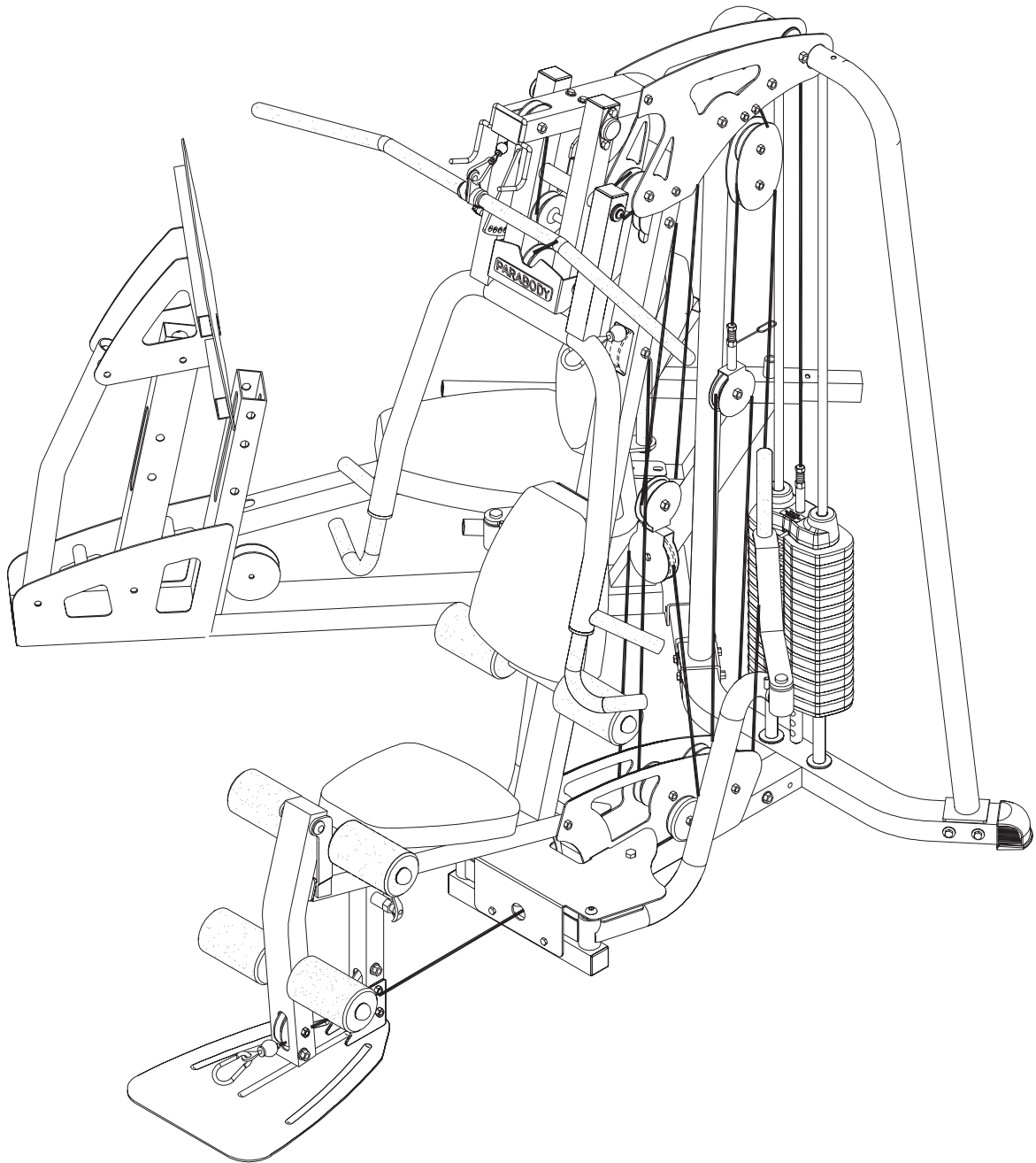




G4-GLPA-001

## G4 HOME GYM LEG PRESS ADAPTER



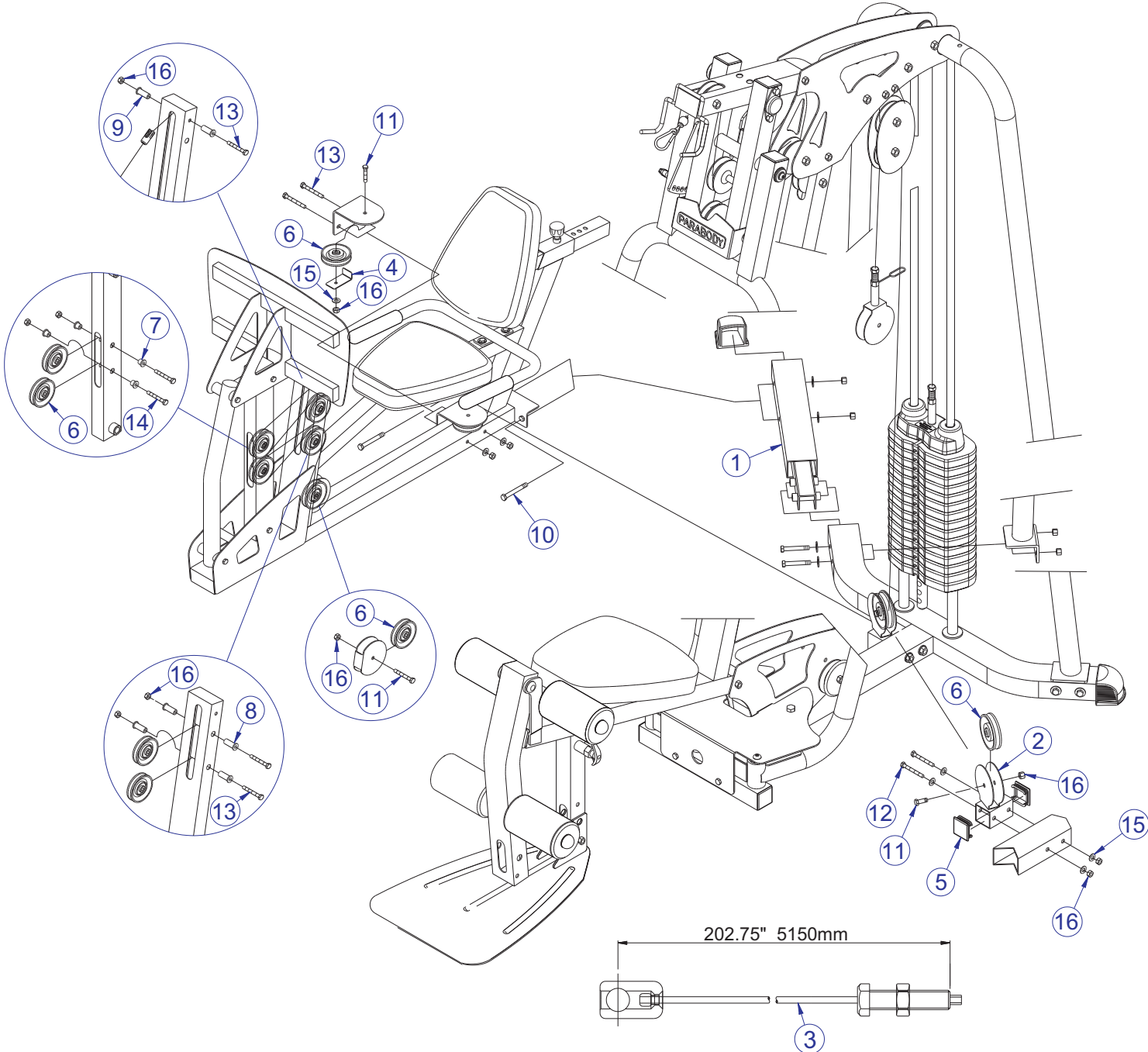
Customer Support Services  
PARTS MANUAL

# G4-GLPA LEG PRESS ADAPTER CONTENTS

---

|                           | PAGE |
|---------------------------|------|
| COMPONENT ASSEMBLY        | 3    |
| COMPONENT ASSEMBLY LEGEND | 4    |
| SUPPLIED ACCESSORIES      | 5    |
| HARDWARE BAG              | 6    |

# G4-GLPA LEG PRESS ADAPTER COMPONENT ASSEMBLY



SEE PAGE 4 FOR LEGEND

# G4-GLPA LEG PRESS ADAPTER COMPONENT ASSEMBLY LEGEND

---

| ITEM NO. | QTY. | PART NO. | DESCRIPTION                      |
|----------|------|----------|----------------------------------|
| 1        | 1    | 8605301  | WLDMT, CONNECTING TUBE           |
| 2        | 1    | 8608601  | ASSY, PULLEY HOUSING             |
| 3        | 1    | 8608701  | CABLE, LEG PRESS, G4-GLPA        |
| 4        | 1    | 8603501  | L CABLE RETAINER                 |
| 5        | 2    | 8585401  | CAP, END 2 SQ                    |
| 6        | 7    | 3116201  | PULLEY, 3-1/2 OD X 3/8 ID X 1    |
| 7        | 4    | 8606901  | SPACER, STEP 19/32               |
| 8        | 4    | 8607001  | SPACER, STEP 1-19/32             |
| 9        | 2    | 8607101  | SPACER, STEP 11/16               |
| 10       | 2    | 3102905  | 3/8-16 X 3-3/4 UNS HEX FHB G2 ZN |
| 11       | 3    | 3102924  | 3/8-16X1-3/4 UNS HEX FHB G2 ZN   |
| 12       | 2    | 3102970  | .50- 13 X 5.75 HEX HEAD BOLT     |
| 13       | 5    | 3102972  | .375-16 X 4.75 HEX HEAD BOLT     |
| 14       | 2    | 3102922  | 3/8-16X2-3/4 UNS HEX FHB G2 ZN   |
| 15       | 9    | 3102514  | WASHER, FLAT 3/8 IN SAE ST ZN    |
| 16       | 14   | 3102802  | VMI NUT, NYLOCK 3/8-16           |

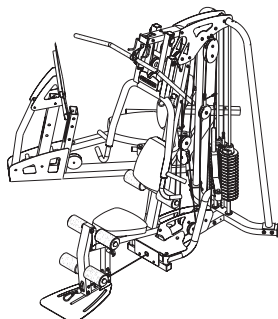
# G4-GLPA LEG PRESS ADAPTER SUPPLIED ACCESSORIES

---

1

## LIFE FITNESS

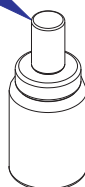
G4LPA-001 LEG PRESS ADAPTER  
USER GUIDE



G4LPA-001 LEG PRESS ADAPTER  
G4LPA-001 LEG PRESS ADAPTER  
G4LPA-001 LEG PRESS ADAPTER

G4LPA-001 LEG PRESS ADAPTER  
G4LPA-001 LEG PRESS ADAPTER  
G4LPA-001 LEG PRESS ADAPTER

2



| ITEM NO. | QTY. | PART NO. | DESCRIPTION               |
|----------|------|----------|---------------------------|
| 1        | 1    | 8608801  | MANUAL, USER'S, G4-GLPA   |
| 2        | 1    | 8598401  | PAINT, TOUCH UP, PLATINUM |

# G4-GLPA LEG PRESS ADAPTER HARDWARE BAG

---

## HARDWARE BAG PART NUMBER

8610301

### BAG CONTAINS:

| Item    | Description                      | UOM | Quantity |
|---------|----------------------------------|-----|----------|
| 3102970 | .50- 13 X 5.75 HEX HEAD BOLT     | EA  | 2        |
| 3102972 | .375-16 X 4.75 HEX HEAD BOLT     | EA  | 5        |
| 3102905 | 3/8-16 X 3-3/4 UNS HEX FHB G2 ZN | EA  | 2        |
| 3102922 | 3/8-16X2-3/4 UNS HEX FHB G2 ZN   | EA  | 2        |
| 3102924 | 3/8-16X1-3/4 UNS HEX FHB G2 ZN   | EA  | 3        |
| 3102514 | WASHER, FLAT 3/8 IN SAE ST ZN    | EA  | 9        |
| 3102802 | VMI NUT, NYLOCK 3/8-16           | EA  | 14       |
| 8606901 | SPACER, STEP 19/32               | EA  | 4        |
| 8607001 | SPACER, STEP 1-19/32             | EA  | 4        |
| 8607101 | SPACER, STEP 11/16               | EA  | 2        |