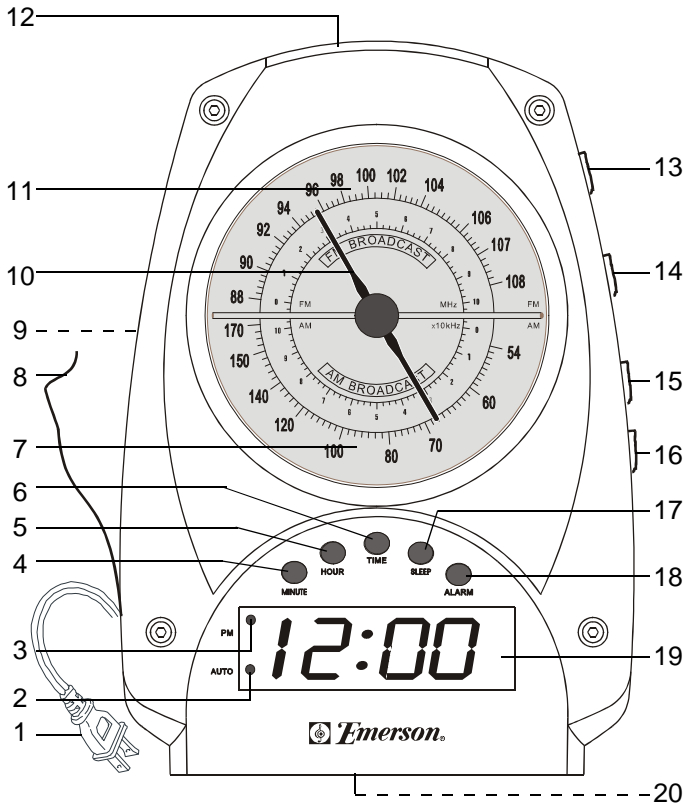


Digital Alarm Clock Radio

LOCATION OF CONTROLS AND INDICATORS



- | | |
|---------------------------------|-------------------------------------|
| 1.) AC Power Cord. | 13.) Band Selector (FM/AM). |
| 2.) AUTO "On" Indicator. | 14.) TUNING Control. |
| 3.) PM Indicator. | 15.) VOLUME Control |
| 4.) MINUTE Button. | OFF/BUZZER Switch. |
| 5.) HOUR Button. | 16.) Function Selector Switch |
| 6.) TIME Button. | (ON/OFF/AUTO) . |
| 7.) AM Dial Scale. | 17.) SLEEP Button. |
| 8.) FM Wire Antenna. | 18.) ALARM Set/Reset Button. |
| 9.) Speaker (Back Cabinet). | 19.) Clock Display. |
| 10.) Dial Pointer. | 20.) Back-Up Battery Compartment |
| 11.) FM Dial Scale. | (Bottom Cabinet) . |
| 12.) SNOOZE Button. | |


POWER SUPPLY

AC power : 120V 60 Hz AC.

DC power : 9V battery type 006P (not provided) for clock back-up system only.

An alkaline type battery is recommended. For optimum performance, this battery should be replaced every 6 months.

- 1.) Insert the AC power cord into a convenient standard AC wall outlet.
- 2.) Connect the 9V battery inside the compartment at the rear of the unit.

BACK-UP SYSTEM: Ensures that the unit will continue to operate as normal during an AC power disruption (in order to preserve the battery life the display will not light). All clock settings will be kept in the memory, however, the clock time may require adjustment for exact accuracy. If this battery is not installed, the display  blinks to indicate that you have to reset the time and alarm settings.

SETTING THE TIME

- 1.) Press and hold the **TIME** button together with the **HOUR** and **MINUTE** buttons to adjust the time display. If the **PM** indicator is 'on', the time displayed is PM.
- 2.) Release all buttons when the correct time is displayed. The clock begins to run.

LISTENING TO THE RADIO

- 1.) Set the Function selector to the '**ON**' position.
- 2.) Set the Band Selector switch to the **AM** or **FM** position.
- 3.) Rotate the **TUNING** knob to select the desired station.
- 4.) Rotate the **VOLUME** knob to adjust the volume level.
- 5.) When finished listening set the Function selector to the '**OFF**' position.

For Better Reception

FM - Fully extend the FM lead wire antenna and adjust its direction and position.

AM - Rotate the entire unit until the internal AM antenna finds the strongest signal.

SETTING THE ALARM TIME AND WAKE UP MODE

- 1.) Press and hold the **ALARM** button together with the **HOUR** or **MINUTE** button to adjust the Wake-up Time display. If the **PM** indicator is 'On' the Wake-up time displayed is PM.
- 2.) When the desired Wake-up Time appears, release all buttons.
- 3.) To wake to the buzzer set to the '**BUZZER**' position by turning the **VOLUME** control to minimum until a 'click' sound is heard and then set the Function selector to the '**AUTO**' position. The **AUTO** indicator comes 'On'.
- 4.) To wake to Radio follow steps 1 - 4 in **LISTENING TO THE RADIO** above and then set the Function selector to the '**AUTO**' position. The **AUTO** indicator comes 'On'.

STOPPING THE ALARM

The alarm will continue for 1 hour and 59 minutes.

- a.) Press **SNOOZE** button to stop the alarm for 9 minutes, the alarm turns 'On' again.
- b.) Press the **ALARM** button to stop the alarm for 24 hours. It will turn 'On' again at the same time on the following day.
- c.) Set the Function selector to the '**OFF**' position to shut off the alarm completely. The **AUTO** indicator goes 'Off'.

SLEEP TO MUSIC

Set the **ON/OFF/AUTO** switch to **OFF** position when you sleep to music, and to **AUTO** position when you sleep to music and wake up next morning.

- 1.) Press the **SLEEP** button. The display shows "59" and the radio begins to play. Select the desired band, station, and volume level.
- 2.) To increase the Sleep time by 1 hour, press the **SLEEP** and **HOUR** buttons together.
- 3.) To decrease the Sleep time, press the **SLEEP** and **MINUTE** buttons together. The display begins counting down. Release the buttons when the display shows the desired Sleep time.
- 4.) When the Sleep Timer counts down to "00" the radio shuts off automatically. To shut the radio off before the Sleep Timer reaches "00" press the **SNOOZE** button at any time.

CAUTION

CAUTION
RISK OF ELECTRIC SHOCK
DO NOT OPEN

ATTENTION : To reduce the risk of electric shock, do not remove the cover. There are no user serviceable parts inside the unit. Refer all servicing to qualified personnel.



The lightning flash with arrowhead symbol within the triangle is a warning sign alerting the user of "dangerous voltage" inside the unit.



The exclamation point within the triangle is a warning sign alerting the user of important instructions accompanying the product.

WARNING

- To reduce the risk of fire or electric shock, do not expose this appliance to rain or moisture.

IMPORTANT

- Do not throw batteries in fire!
- The apparatus shall not be exposed to dripping or splashing.

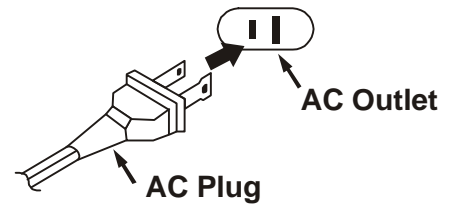
Visit our web site at www.emersonradio.com

IMPORTANT NOTES

This radio is designed to operate on normal 120V 60Hz AC power only. Do not attempt to operate the radio on any other power source. You could cause damage to the radio that is not covered by your warranty.

This radio should be connected to an AC outlet that is always 'live'. Do not connect it to an outlet that is controlled by a wall switch. When the power to the radio is interrupted, the battery back up system takes over to maintain the time and alarm settings. To maximize the life of the back up battery, keep the radio connected to a 'live' AC outlet at all times.

This radio uses a polarized AC plug which has one blade wider than the other. This plug will only fit into a polarized AC outlet. This is a safety feature. If the plug will not fit, you may have an older non-polarized AC outlet. Do not defeat the safety feature by trying to file the wider blade, or replacing the plug. Contact an electrician to replace your outdated outlet.



FCC INFORMATION

This equipment has been tested and found to comply with the limits for a Class B digital device, pursuant to Part 15 of the FCC Rules. These limits are designed to provide reasonable protection against harmful interference in a residential installation. This equipment generates, uses, and can radiate radio frequency energy and, if not installed and used in accordance with the instructions, may cause harmful interference to radio communications. However, there is no guarantee that interference will not occur in a particular installation. If this equipment does cause harmful interference to radio or television reception, which can be determined by turning the equipment off and on, the user is encouraged to try to correct the interference by one or more of the following measures:

- Reorient or relocate the receiving antenna.
- Increase the separation between the equipment and receiver.
- Connect the equipment into an outlet on a circuit different from that to which the receiver is connected.
- Consult the dealer or an experienced radio/TV technician for help.

This device complies with Part 15 of the FCC Rules. Operation is subject to the following two conditions:

- (1) This device may not cause harmful interference, and
- (2) This device must accept any interference received, including interference that may cause undesired operation.

LIMITED WARRANTY

Emerson Radio Corp. warrants manufacturing defects in original material, including original parts and workmanship, under normal use and conditions, for a period of ninety (90) days from the date of original purchase in the U.S. With your dated proof of purchase, we will provide repair service at no charge for labor and parts at an authorized Depot Repair Facility, or replace the product in our discretion. For repair or replacement, pack your unit in a padded box, enclose your check or money order payable to Emerson Radio Corp. in the amount of \$5.00 (not required by California residents) to cover shipping and handling costs, and enclose a copy of your proof of purchase. Send your unit to:

Emerson Radio Corp.
1901 Diplomat Drive,
Farmers Branch, TX 75234.

This warranty does not cover damage from negligence, misuse, abuse, accident, failure to follow operating instructions, commercial use, rental, repairs by an unauthorized facility, or products purchased, used, serviced or damaged outside of the United States.

THIS WARRANTY GIVES YOU SPECIFIC LEGAL RIGHTS, AND YOU MAY ALSO HAVE OTHER RIGHTS WHICH VARY FROM STATE TO STATE.

AU898H



TO FIND THE LOCATION AND PHONE NUMBER
OF YOUR NEAREST SERVICE CENTER
PERMITTED TO PERFORM WARRANTY...

CALL TOLL FREE: 1-800-695-0098

FOR ADDITIONAL SET-UP OR OPERATING ASSISTANCE
PLEASE CALL:
1-800-898-9020

FOR CUSTOMER SERVICE, PLEASE WRITE TO:
Emerson Radio Corp.
Consumer Affairs Dept.
1901 Diplomat Drive,
Farmers Branch, TX 75234.

EMERSON
Part No. : 16-2943
404-02

Printed in China