



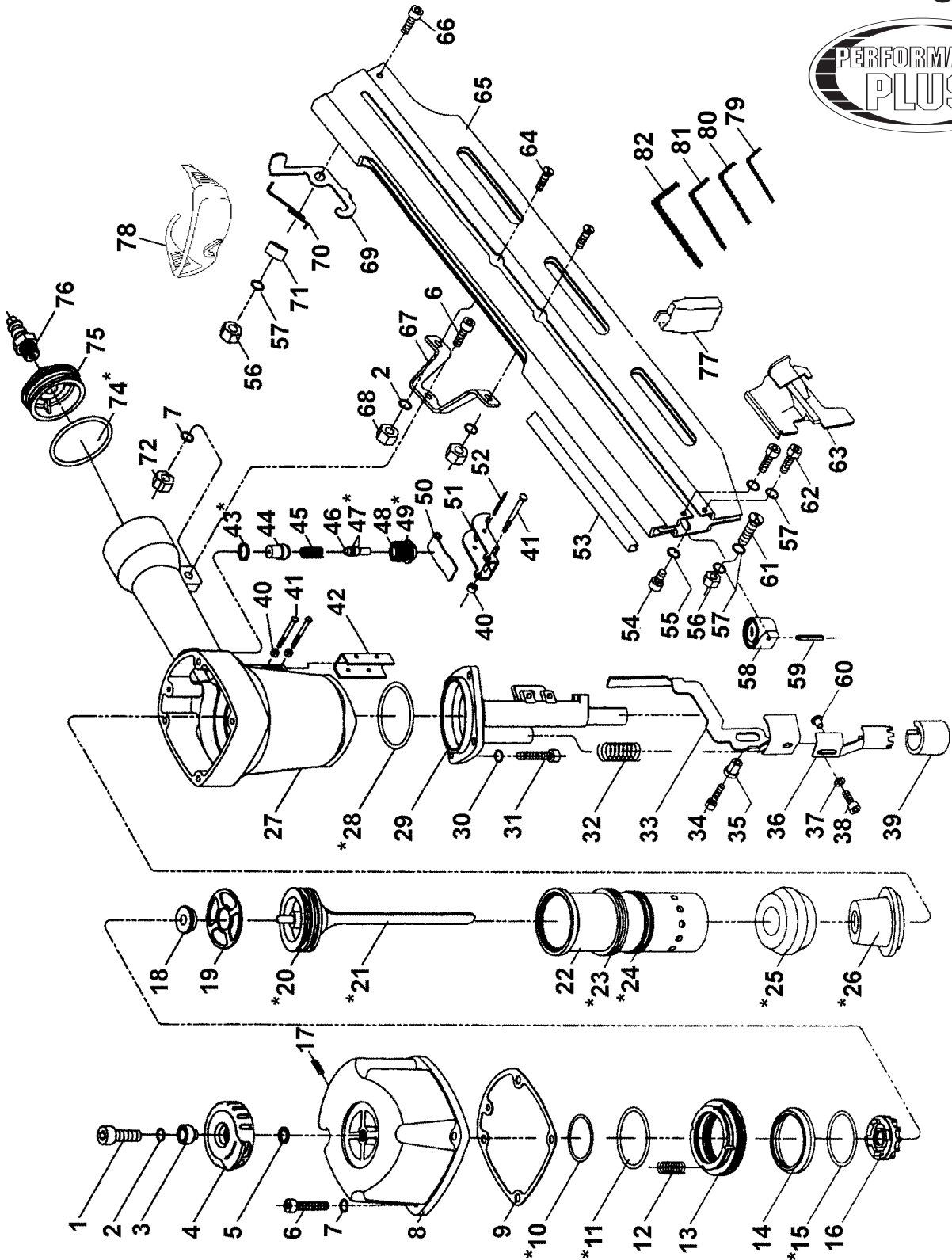
Service Manual / Manuel de Service

28° Clipped Head Framing Nailer Kit Ens. Cloueuse de Charpente 28° à Tête Demi-Lune



Revised/Revisé 08/2008

8228





Parts Pricing List / Liste de Prix des Pièces

8228

Diag.	Order # Com.	English Description	Description Française	Qty./Qté.	Price/Prix
1	7082280010	CAP SCREW	BOULON A TETE CYLINDRIQUE	1	\$2.24
2	7082280020	SPRING WASHER	RONDELLE A RESSORT	3	\$1.55
3	7082280030	BUSHING	BAGUE	1	\$3.85
4	7082280040	AIR DEFLECTOR	DEFLECTEUR A AIR	1	\$7.99
5	7082280050	SEAL	JOINT D'ETANCHEITE	1	\$1.90
6	7082280060	CAP SCREW	BOULON A TETE CYLINDRIQUE	5	\$2.76
7	7082280070	SPRING WASHER	RONDELLE A RESSORT	5	\$1.55
8	7082280080	CYLINDER CAP	CAPUCHON DU CYLINDRE	1	\$45.83
9	7082280090	GASKET	JOINT D'ETANCHEITE	1	\$4.54
10	KW-085	BUMPER/DRIVER/O-RING REPL. KIT	TROUSSE DE REMPL. TIGE/AMOR./JOINT	1	-
11	KW-085	BUMPER/DRIVER/O-RING REPL. KIT	TROUSSE DE REMPL. TIGE/AMOR./JOINT	1	-
12	7082280120	SPRING	RESSORT	1	\$4.54
13	7082280130	HEAD VALVE	SOUPAPE DE TETE	1	\$22.71
14	7082280140	SEAL	JOINT D'ETANCHEITE	1	\$4.54
15	KW-085	BUMPER/DRIVER/O-RING REPL. KIT	TROUSSE DE REMPL. TIGE/AMOR./JOINT	1	-
16	7082280160	VALVE BASE	BASE DE LA VALVE	1	\$14.78
17	7082280170	SET SCREW	VIS SANS TETE	1	\$1.55
18	7082280180	STOP BUMPER	AMORTISSEUR D'ARRET	1	\$4.89
19	7082280190	BUMPER RETAINER	RETENU DE L'AMORTISSEUR	1	\$5.58
20	KW-085	BUMPER/DRIVER/O-RING REPL. KIT	TROUSSE DE REMPL. TIGE/AMOR./JOINT	1	-
21	KW-085	BUMPER/DRIVER/O-RING REPL. KIT	TROUSSE DE REMPL. TIGE/AMOR./JOINT	1	-
22	7082280220	CYLINDER	CYLINDRE	1	\$34.33
23	KW-085	BUMPER/DRIVER/O-RING REPL. KIT	TROUSSE DE REMPL. TIGE/AMOR./JOINT	1	-
24	KW-085	BUMPER/DRIVER/O-RING REPL. KIT	TROUSSE DE REMPL. TIGE/AMOR./JOINT	1	-
25	KW-085	BUMPER/DRIVER/O-RING REPL. KIT	TROUSSE DE REMPL. TIGE/AMOR./JOINT	1	-
26	KW-085	BUMPER/DRIVER/O-RING REPL. KIT	TROUSSE DE REMPL. TIGE/AMOR./JOINT	1	-
27	7082280270	BODY W/RUBBER GRIP	BOITIER A/POIGNEE ANTIDERAPANTE	1	\$103.44
28	KW-085	BUMPER/DRIVER/O-RING REPL. KIT	TROUSSE DE REMPL. TIGE/AMOR./JOINT	1	-
29	7082280290	NOSE	NEZ	1	\$61.93
30	7082280300	SPRING WASHER	RONDELLE A RESSORT	4	\$1.67
31	7082280310	CAP SCREW	BOULON A TETE CYLINDRIQUE	4	\$1.90
32	7082280320	SPRING	RESSORT	1	\$3.28
33	7082280330	DEPTH ADJUST SIDE ARM	BRAS DE COTE DE LA PLAQUE	1	\$14.66
34	7082280340	CAP SCREW	BOULON A TETE CYLINDRIQUE	1	\$2.24
35	7082280350	BUSHING	BAGUE	1	\$3.05
36	7082280360	DEPTH ADJUST PLATE	PLAQUE D'AJUSTEMENT	1	\$10.18
37	7082280370	WASHER	RONDELLE	1	\$1.50
38	7082280380	CAP SCREW	BOULON A TETE CYLINDRIQUE	1	\$1.67
39	7082280390	PLASTIC PROTECTIVE TIP	PROTEGE NEZ EN PLASTIQUE	1	\$2.47
40	7082280400	SEAL	JOINT D'ETANCHEITE	3	\$1.78
41	7082280410	PIN	GOUPILLE	3	\$1.67
42	7082280420	DEPTH PLATE GUIDE	GUIDE DE LA PLAQUE	1	\$4.20
43	KW-085	BUMPER/DRIVER/O-RING REPL. KIT	TROUSSE DE REMPL. TIGE/AMOR./JOINT	1	-
44	7082280440	TRIGGER VALVE HEAD	VALVE DE LA GACHETTE	1	\$4.89
45	7082280450	SPRING	RESSORT	1	\$2.93
46	7082280460	TRIGGER VALVE STEM	TIGE DE LA VALVE	1	\$4.54
47	KW-085	BUMPER/DRIVER/O-RING REPL. KIT	TROUSSE DE REMPL. TIGE/AMOR./JOINT	1	-

Pricing subject to change without prior notice. / Prix sujet à changement sans préavis.



Parts Pricing List / Liste de Prix des Pièces

8228

Diag.	Order # Com.	English Description	Description Française	Qty./Qté.	Price/Prix
48	7082280480	TRIGGER VALVE GUIDE	GUIDE DE LA VALVE	1	\$5.92
49	KW-085	BUMPER/DRIVER/O-RING REPL. KIT	TROUSSE DE REMPL. TIGE/AMOR./JOINT	1	-
50	7082280500	TRIGGER SPRING	RESSORT DE LA GACHETTE	1	\$2.24
51	7082280510	TRIGGER	GACHETTE	1	\$4.77
52	7082280520	PIN	GOUPILLE	1	\$1.67
53	7082280530	RAIL	RAIL	1	\$5.23
54	7082280540	CAP SCREW	BOULON A TETE CYLINDRIQUE	1	\$1.78
55	7082280550	WASHER	RONDELLE	1	\$1.67
56	7082280560	NUT	ECROU	2	\$1.55
57	7082280570	WASHER	RONDELLE	5	\$1.55
58	7082280580	COIL SPRING	RESSORT TORSADE	1	\$14.89
59	7082280590	PIN	GOUPILLE	1	\$1.78
60	7082280600	BUSHING	BAGUE	1	\$2.82
61	7082280610	PAN HD SCREW	VIS A TETE BOMBEE	1	\$1.55
62	7082280620	CAP SCREW	BOULON A TETE CYLINDRIQUE	2	\$1.90
63	7082280630	FEEDER SHOE	LOQUET	1	\$9.14
64	7082280640	COUNTERSUNK SCREW	VIS A TETE FRAISEE	2	\$1.78
65	7082280650	MAGAZINE	CHARGEUR	1	\$57.44
66	7082280660	CAP SCREW	BOULON A TETE CYLINDRIQUE	1	\$2.01
67	7082280670	SUPPORT	SUPPORT	1	\$13.40
68	7082280680	NYLON HEX. NUT	ECROU HEXAGONAL AVEC NYLON	1	\$1.90
69	7082280690	LOCK LEVER	LEVIER DE VERROUILLAGE	1	\$5.69
70	7082280700	TORSION SPRING	RESSORT A TORSION	1	\$3.28
71	7082280710	BUSHING	BAGUE	1	\$2.93
72	7082280720	NUT	ECROU	1	\$2.13
74	KW-085	BUMPER/DRIVER/O-RING REPL. KIT	TROUSSE DE REMPL. TIGE/AMOR./JOINT	1	-
75	7082280750	END CAP	CAPUCHON ARRIERE	1	\$13.40
76	7082280760	AIR INLET	PRISE D'AIR	1	\$4.43
77	7082280770	OIL BOTTLE	BOUTEILLE D'HUILE	1	\$4.31
78	7082280780	SAFETY GLASSES	LUNETTES DE SECURITE	1	\$22.71
79	7082280790	HEX. KEY (3MM)	CLE HEXAGONALE (3MM)	1	\$2.59
80	7082280800	HEX. KEY (4MM)	CLE HEXAGONALE (4MM)	1	\$2.70
81	7082280810	HEX. KEY (5MM)	CLE HEXAGONALE (5MM)	1	\$2.82
82	7082280820	HEX. KEY (6MM)	CLE HEXAGONALE (6MM)	1	\$2.93
	708228MBIL	BILINGUAL MANUAL 8228	MANUEL BILINGUE 8228	1	\$15.00

*These parts are only available as an accessory "Bumper, Driver & O-Ring Replacement Kit" model: KW-085

*Ces pièces sont seulement disponibles en accessoire comme "Trousse de Remplacement Tige de Pousser, Amortisseur & Joint Toriques" modèle: KW-085