

**PARTS LIST**

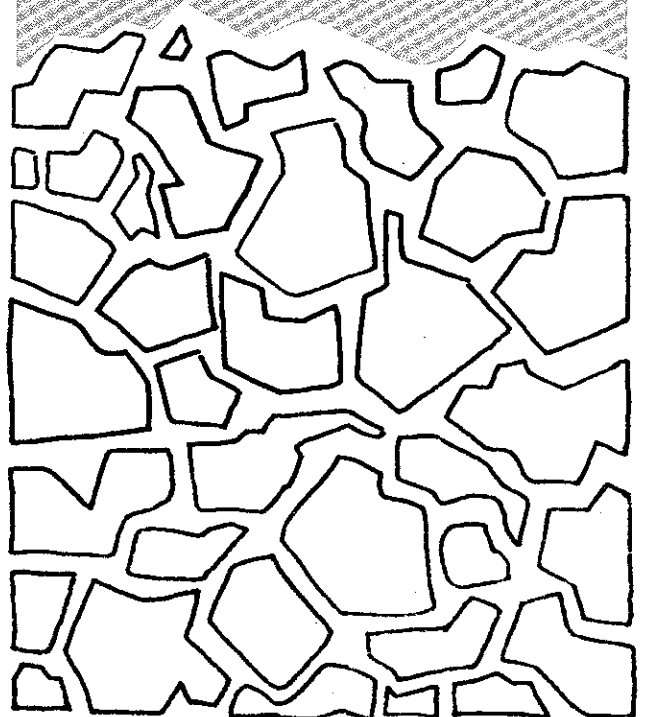
PRICE .35

**HOMELITE®**

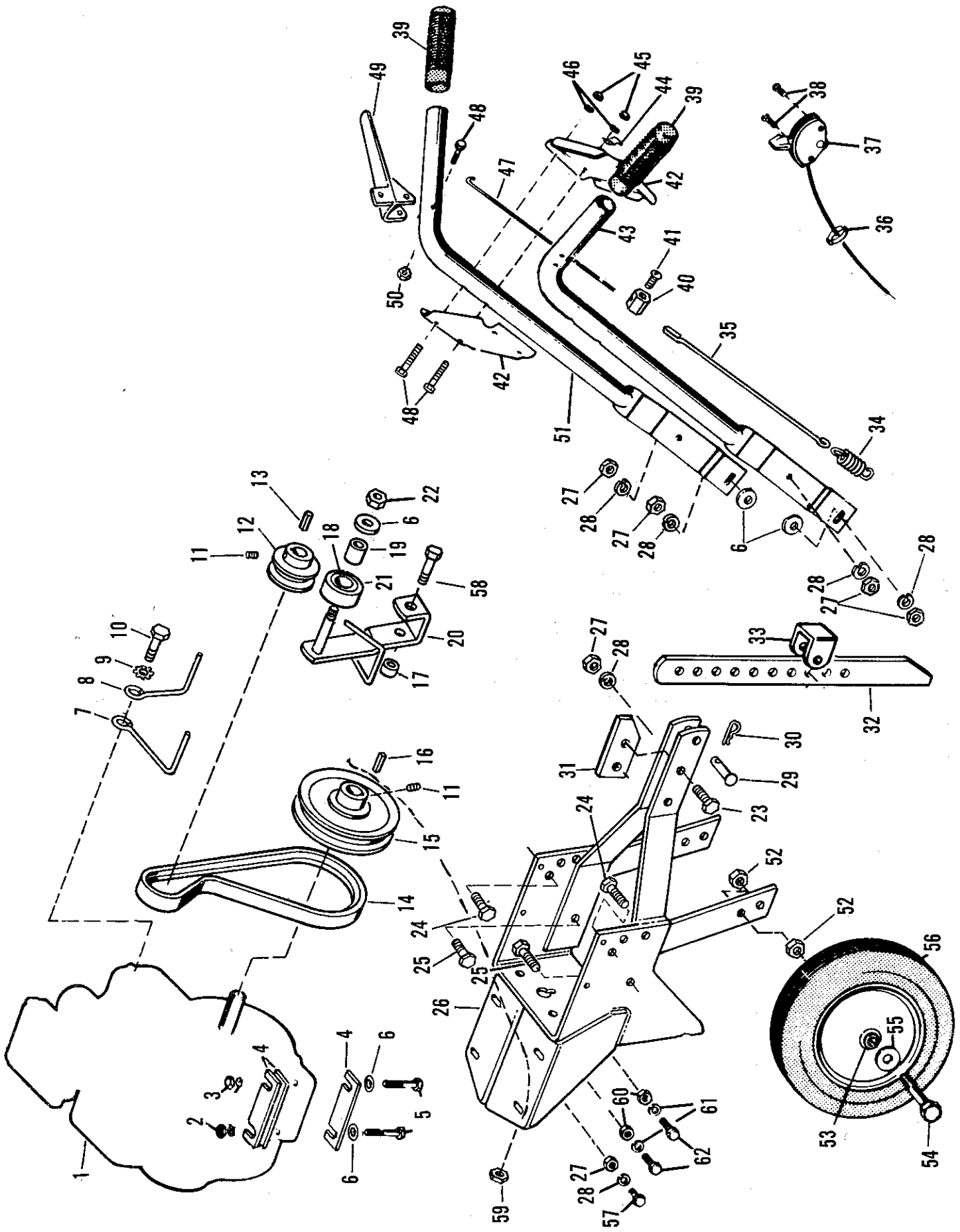
**TILLERS**

**R-3**

**R-5**



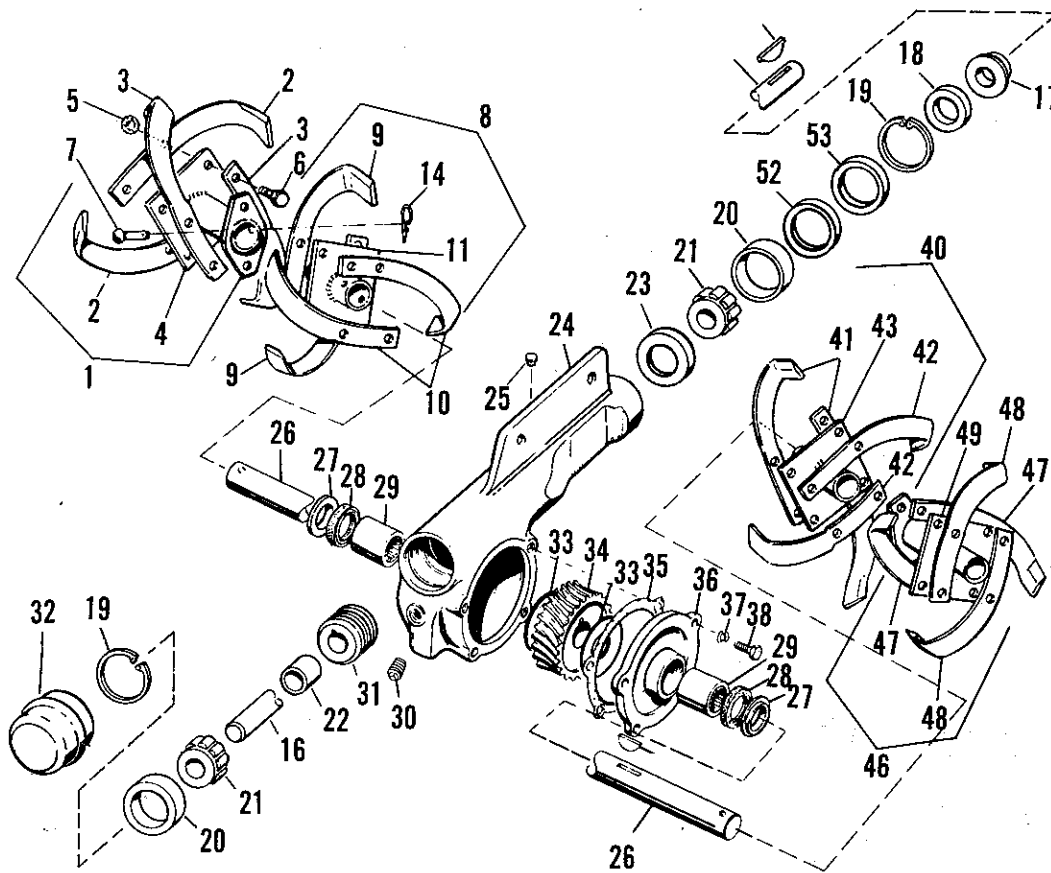
# R-3 FRAME, HANDLES & CONTROLS



# R-3 FRAME, HANDLES and CONTROLS

No.	Description	Part No.	Qty.
1	ENGINE-3 H. P.		
2	NUT-hex, 5/16-18	LM-09173-72	4
3	WASHER-lock, 5/16	LM-09173-56	4
4	SHIM-engine	LM-01184-63	6
5	SCREW-hex cap, 5/16-18 x 2	LM-09193-54	4
6	WASHER-flat, 5/16	LM-09176-42	11
7	BELT-stop	LM-01180-37	1
8	BELT-stop	LM-01065-45	1
9	WASHER-lock, 1/2	LM-09095-89	1
10	SCREW-hex cap, 1/2-20 x 1	LM-09213-70	1
11	SCREW-set, 5/16-18 x 5/16	LM-09286-91	1
12	PULLEY-engine	LM-01180-27	1
13	KEY	LM-80610-81	1
14	BELT-"V"	LM-01183-12	1
15	PULLEY-driven	LM-01184-70	1
16	KEY	LM-01184-39	1
17	SPACER	LM-01184-72	1
18	SPACER	LM-81910-20	1
19	LEVER-idler	LM-01727-51	1
20	PULLEY-idler	LM-01010-02	1
21	Includes: BUSHING	LM-81612-43	1
22	NUT-hex lock, 3/8-16	LM-09287-31	1
23	SCREW-hex cap, 3/8-16 x 1-1/2	LM-09193-60	2
24	SCREW-hex cap, 3/8-16 x 7/8	LM-09193-57	2
25	SCREW-hex cap, 3/8-16 x 1-1/4	LM-09174-00	2
26	BODY	LM-01708-79	1
27	NUT-hex, 3/8-16	LM-09169-50	7
28	WASHER-lock, 3/8	LM-09169-65	7
29	PIN-inner	LM-01052-49	1
30	CLIP-spring	LM-81610-45	1
31	PLATE-stop	LM-01182-07	1
32	BAR-depth	LM-01180-81	1
33	CLAMP	LM-01184-47	1
34	SPRING	LM-01184-95	1
35	WIRE-extension	LM-01184-55	1
36	CLIP-cable	LM-80611-08	1
37	CONTROL-throttle	LM-01183-00	1
38	SCREW-self tapping, 10-24 x 1	LM-09287-32	2
39	GRIP-handle	LM-01065-58	2
40	CLAMP-wire	LM-01610-92	1
41	SCREW-rd., 10-24 x 3/8	LM-09160-79	1
42	COVER-handle (upper)	LM-01182-98	2
43	HANDLE-left hand	LM-01184-66	1
44	CLAMP-cable	LM-01067-86	1
45	NUT-hex, 1/4-20	LM-09166-22	4
46	WASHER-lock, 1/4	LM-09169-64	4
47	SPRING-extension	LM-01610-90	1
48	SCREW-hex cap, 1/4-20 x 1-1/2	LM-09182-40	5
49	GRIP-clutch	LM-01184-31	1
50	NUT-hex lock, 1/4-20	LM-09233-58	1
51	HANDLE-right hand	LM-01184-67	1
52	NUT-hex, 1/2-13	LM-09105-10	4
53	SCREW-hex cap, 1/2-13 x 3	LM-09202-07	2
54	WASHER-flat, 1/2	LM-09184-31	2
55	WHEEL & TIRE	LM-01184-69	2
56	Includes: BUSHING-wheel	LM-01181-32	4
57	SCREW-hex cap, 3/8-16 x 3/4	LM-09081-27	1
58	BOLT-pivot	LM-01713-37	1
59	NUT-special, 5/16-18	LM-09257-63	1
60	NUT-hex, 7/16-20	LM-09139-01	2
61	WASHER-lock, 7/16	LM-09181-99	2
62	SCREW-hex cap, 7/16-20 x 1-1/4	LM-09280-38	2
	FILM-"Homelite" (not shown)	LM-01744-42	1
	FILM-Tiller clutch (not shown)	LM-01184-84	1
	FILM-"Homelite" (not shown)	LM-01749-25	1
	FILM-drive control	LM-01748-44	1
	Accessory		
	OIL-worm gear	LM-01749-46	1

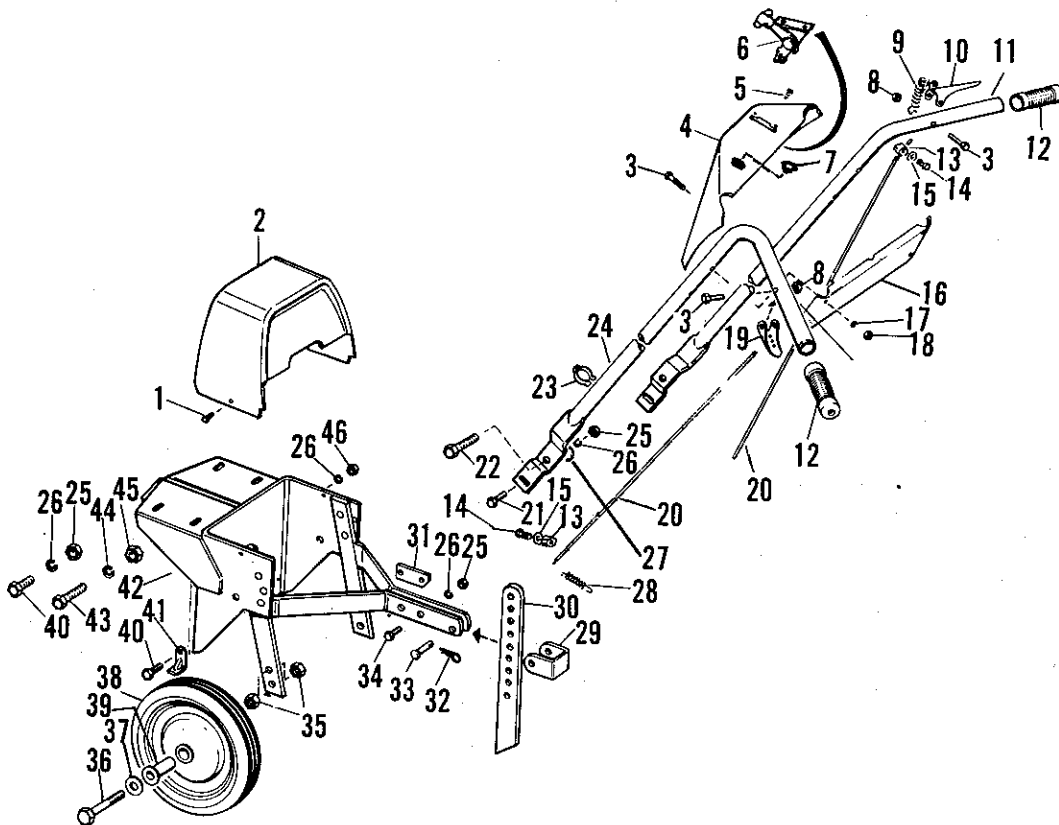
# R-3 TINE ASSEMBLY and GEAR HOUSING



No.	Description	Part No.	Qty.	No.	Description	Part No.	Qty.
1	BLADE ASSEMBLY-tine, outer (right hand)	LM-01183-26	1	26	SHAFT-worm gear	LM-01180-21	1
	Includes:			27	SHIELD	LM-01184-03	2
2	BLADE-tine (right hand)	LM-01182-95	2	28	SEAL-oil	LM-01181-18	2
3	BLADE-tine (left hand)	LM-01182-94	2	29	BEARING-needle	LM-01180-20	2
4	PLATE-outer	LM-01180-46	1	30	PLUG-pipe, 3/8"	LM-09016-53	1
5	NUT-hex lock, 7/16-20	LM-09148-80	4	31	WORM-right hand	LM-01184-92	1
6	SCREW-hex cap, 7/16-20 x 1-1/4	LM-09204-88	4	32	CUP	LM-01544-87	1
7	PIN	LM-01180-53	4	33	WASHER-thrust	LM-01183-15	2
8	BLADE ASSEMBLY-tine, inner (right hand)	LM-01183-24	1	34	GEAR-worm (right hand)	LM-01180-22	1
	Includes:			35	GASKET	LM-01180-24	1
9	BLADE-tine (right hand)	LM-01182-95	2	36	COVER	LM-01184-02	1
10	BLADE-tine (left hand)	LM-01182-94	2	37	WASHER-lock, 1/4	LM-09169-64	4
11	PLATE-inner	LM-01180-84	1	38	SCREW-hex cap, 1/4-20 x 5/8	LM-09219-59	4
12	NUT-hex lock, 7/16-20	LM-09148-80	4	39	KEY-Woodruff #91	LM-09177-55	1
13	SCREW-hex cap, 7/16-20 x 1-1/4	LM-09204-88	4	40	BLADE ASSEMBLY-tine, inner (left hand)	LM-01183-23	1
14	PIN-cotter, 1/8 x 3/4	LM-09184-51	4		Includes:		
15	KEY-3/16 x 7/8	LM-09111-71	1	41	BLADE-tine (right hand)	LM-01182-95	2
16	SHAFT-worm	LM-01708-88	1	42	BLADE-tine (left hand)	LM-01182-94	2
17	SHIELD	LM-01184-00	1	43	PLATE-inner	LM-01180-84	4
18	SEAL-oil	LM-01183-93	1	44	NUT-hex lock, 7/16-20	LM-09148-80	4
19	RING-snap	LM-01183-96	2	45	SCREW-hex cap, 7/16-20 x 1-1/4	LM-09204-88	4
20	CUP-bearing	LM-01543-93	2	46	BLADE ASSEMBLY-tine, outer (left hand)	LM-01183-25	1
21	BEARING-roller	LM-01544-86	2		Includes:		
22	SPACER	LM-01183-98	1	47	BLADE-tine (right hand)	LM-01182-95	2
23	CUP	LM-01183-99	1	48	BLADE-tine (left hand)	LM-01182-94	2
24	HOUSING-worm drive	LM-01183-92	1	49	PLATE-outer (not shown)	LM-01180-46	1
25	PLUG-vent	LM-01184-62	1	50	NUT-hex lock, 7/16-20 (not shown)	LM-09148-80	4
				51	SCREW-hex cap, 7/16-20 x 1-1/4	LM-09204-88	4
				52	RING-backing	† LM-01708-85	1
				53	RING-backing	† LM-01717-62	1

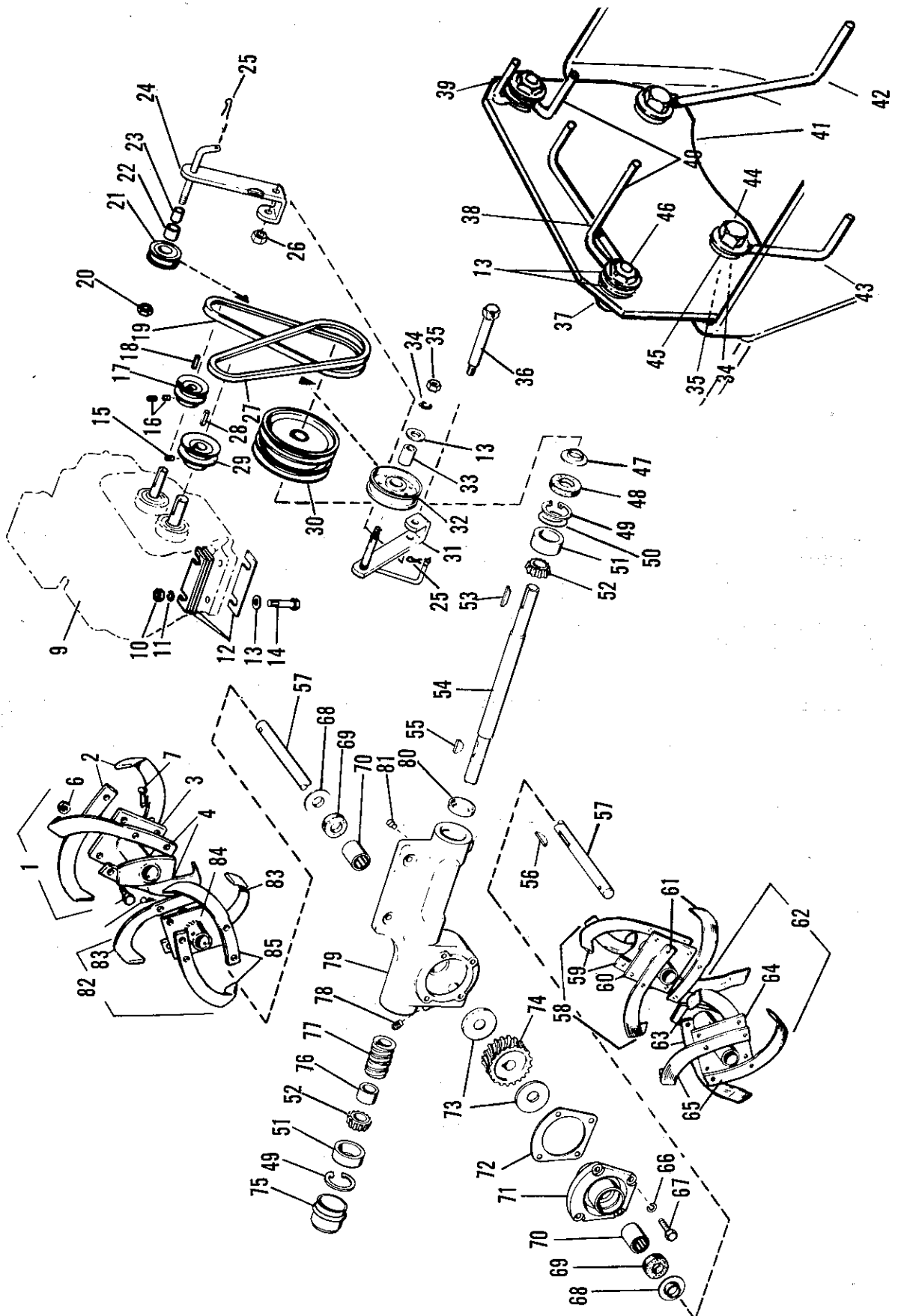
† - replace according to number on original part

# R-5 FRAME, HANDLES and CONTROLS



No.	Description	Part No.	Qty.	No.	Description	Part No.	Qty.
1	SCREW-hex, 1/4-20 x 3/8	LM-09274-28	2	27	WASHER-flat, 3/8	LM-09173-78	2
2	COVER	LM-01703-59	1	28	SPRING	LM-01210-37	1
3	SCREW-hex cap, 1/4-20 x 1-1/2	LM-09182-40	6	29	CLAMP	LM-01184-47	1
4	HOUSING-control	LM-01182-37	1	30	BAR-depth	LM-01180-81	1
5	SCREW-hex, 1/4-20 x 1/2	LM-09231-88	2	31	PLATE-stop	LM-01182-07	1
6	CONTROL-throttle	LM-01182-35	1	32	CLIP-spring	LM-81610-45	1
7	PLUG-button	LM-01641-91	1	33	PIN-inner	LM-01052-49	1
8	NUT-hex, 1/4-20	LM-09233-58	2	34	SCREW-hex cap, 3/8-16 x 1-1/2	LM-09193-60	2
9	SPRING	LM-01184-95	1	35	NUT-hex, 1/2-13	LM-09137-44	4
10	GRIP-clutch (forward)	LM-01184-31	1	36	SCREW-hex cap, 1/2-13 x 3-1/4	LM-09085-29	2
11	HANDLE-right hand	LM-01184-67	1	37	WASHER-flat	LM-09184-31	2
12	GRIP-handle bar	LM-01065-58	2	38	WHEEL & TIRE	LM-01180-30	2
13	CLAMP-wire	LM-01610-92	2	39	Includes: BUSHING-wheel	LM-01181-32	4
14	SCREW-set sq., 10-24 x 5/8	LM-09287-22	2	40	SCREW-hex cap, 3/8-16 x 3/4	LM-09081-27	3
15	WASHER-flat, 3/16	LM-09239-06	2	41	SCRAPER	LM-01703-60	2
16	COVER-handle bar	LM-01182-98	1	42	BODY	LM-01708-79	1
17	WASHER-lock, 1/4	LM-09169-64	4	43	SCREW-hex cap, 7/16-20 x 1-1/4	LM-09204-88	2
18	NUT-hex, 1/4-20	LM-09166-22	4	44	WASHER-lock, 7/16	LM-09181-99	2
19	GRIP-clutch (reverse)	LM-01184-49	1	45	NUT-hex, 7/16-20	LM-09139-01	2
20	CABLE	LM-01729-24	2	46	NUT-hex, 3/8-16	LM-09174-21	2
21	SCREW-hex, 3/8-16 x 1	LM-09287-28	2		FILM-"Homelite" (not shown)	LM-01744-42	1
22	SCREW-hex cap, 3/8-16 x 1-1/4	LM-09287-27	2		FILM-identification (not shown)	LM-16070-48	1
23	CLIP-cable	LM-80611-08	1		FILM-throttle (not shown)	LM-01744-44	1
24	HANDLE-left hand	LM-01184-66	1		FILM-tiller clutch (not shown)	LM-01184-84	1
25	NUT-hex, 3/8-16	LM-09169-50	7		FILM-tiller clutch (not shown)	LM-01184-85	1
26	WASHER-lock, 3/8	LM-09169-65	9				

# R-5 DRIVE and TINES



# R-5 DRIVE and TINES

No.	Description	Part No.	Qty.	No.	Description	Part No.	Qty.
1	BLADE ASSEMBLY-tine, outer (right hand)	LM-01052-89	1	48	SEAL-oil	LM-01183-93	1
	Includes:			49	RING-snap	LM-01183-96	2
2	BLADE-tine (left hand)	LM-81520-01	2	50	RING-backing	† LM-01708-85	1
3	PLATE-tine, outer	LM-01052-86	1		RING-backing	† LM-01717-62	1
4	BLADE-tine (right hand)	LM-81520-02	2	51	CUP-bearing	LM-01543-93	2
5	SCREW-hex cap, 7/16-20 x 1-1/4	LM-09204-88	4	52	BEARING-roller	LM-01544-86	2
6	NUT-hex, 7/16-20	LM-09148-80	4	53	KEY	LM-01184-39	1
7	PIN	LM-01180-53	4	54	SHAFT-worm	LM-01708-88	1
8	PIN-cotter, 1/8 x 3/4	LM-09184-51	4	55	KEY-Hi Pro, 3/16 x 7/8	LM-09111-71	1
9	ENGINE-5 H. P.			56	KEY-Woodruff, #91	LM-09177-55	1
10	NUT-hex, 5/16-18	LM-09173-72	4	57	SHAFT-worm gear	LM-01180-21	1
11	WASHER-lock, 5/16	LM-09173-56	4	58	BLADE ASSEMBLY-tine, inner (left hand)	LM-01180-83	1
12	SHIM-engine	LM-01184-63	6		Includes:		
13	WASHER-flat, 5/16	LM-09176-42	13	59	BLADE-tine (left hand)	LM-81520-01	2
14	SCREW-hex cap, 5/16-18 x 2	LM-09193-54	4	60	PLATE-tine, inner	LM-01180-84	1
15	SCREW-set, 5/16-18 x 3/8	LM-09055-64	1	61	BLADE-tine (right hand)	LM-81520-02	2
16	SCREW-set, 5/16-18 x 5/16	LM-09286-91	2		SCREW-hex cap, 7/16-20 x 1-1/4 (not shown)	LM-09204-88	4
17	PULLEY-engine	LM-01184-57	1		NUT-hex, 7/16-20 (not shown)	LM-09148-80	4
18	KEY-Woodruff, #5	LM-09051-21	1	62	BLADE ASSEMBLY-tine, outer (left hand)	LM-01052-88	1
19	BELT-"V" (forward)	LM-01641-46	1		Includes:		
20	NUT-hex, 3/8-16	LM-09287-31	1	63	BLADE-tine (left hand)	LM-81520-01	2
21	PULLEY-idler	LM-01010-02	1	64	PLATE-tine, outer	LM-01052-86	1
	Includes:			65	BLADE-tine (right hand)	LM-81520-02	2
22	BUSHING	LM-81612-43	1		SCREW-hex cap, 7/16-20 x 1-1/4 (not shown)	LM-09204-88	4
23	SPACER	LM-81910-20	1		NUT-hex, 7/16-20 (not shown)	LM-09148-80	4
24	LEVER-idler	LM-01184-08	1	66	WASHER-lock, 1/4	LM-09169-64	4
25	PIN-cotter, 3/16 x 1	LM-09184-58	2	67	SCREW-hex cap, 1/4-20 x 5/8	LM-09219-59	4
26	NUT-special hex, 5/16-18	LM-09257-63	1	68	SHIELD	LM-01184-03	2
27	BELT-"V" (reverse)	LM-01184-94	1	69	SEAL-oil	LM-01181-18	2
28	KEY	LM-80610-81	1	70	BEARING-needle	LM-01180-20	2
29	PULLEY-engine	LM-01180-27	1	71	COVER	LM-01184-02	1
30	PULLEY-driven	LM-01719-87	1	72	GASKET	LM-01180-24	1
31	LEVER-idler	LM-01727-51	1	73	WASHER-thrust	LM-01183-15	2
32	PULLEY-idler	LM-01545-34	1	74	GEAR-worm (right hand)	LM-01180-22	1
33	SPACER	LM-01183-35	1	75	CAP-hub	LM-01544-87	1
34	WASHER-lock, 3/8	LM-09169-65	3	76	SPACER	LM-01183-98	1
35	NUT-hex, 3/8-16	LM-09169-50	3	77	WORM-(right hand)	LM-01184-92	1
36	BOLT-pivot	LM-01713-36	1	78	PLUG-pipe-3/8	LM-09016-53	1
37	BOLT-carriage, 3/8-16 x 1	LM-09222-49	2	79	HOUSING-worm drive	LM-01183-92	1
38	STOP-belt	LM-01728-44	1	80	CUP	LM-01183-99	1
39	STOP-belt	LM-01063-47	1	81	PLUG-vent	LM-01184-62	1
40	STOP-belt	LM-01728-45	2	82	BLADE ASSEMBLY-tine, inner (right hand)	LM-01181-20	1
41	PLATE	LM-01728-46	1		Includes:		
42	STOP-belt	LM-01067-07	1	83	BLADE-tine (left hand)	LM-81520-01	2
43	STOP-belt	LM-01650-44	1	84	PLATE-tine, inner	LM-01180-84	1
44	SCREW-hex cap, 3/8-16 x 1	LM-09077-31	2	85	BLADE-tine (right hand)	LM-81520-02	2
45	WASHER-flat, 3/8	LM-09173-78	2		SCREW-hex cap, 7/16-20 x 1-1/4 (not shown)	LM-09204-88	4
46	NUT-hex, 3/8-16	LM-09234-28	2		NUT-hex, 7/16-20 (not shown)	LM-09148-80	4
47	SHIELD	LM-01184-00	1				



ording to number on original part

Part No.	Description	Qty.	Part No.	Description	Qty.	Part No.	Description	Qty.
LM-01010-02	Pulley Assembly-idler	1	LM-01181-18	Seal-oil	2	LM-81520-02	Blade-tine (R. H.)	2
LM-01052-49	Pin-inner	1	LM-01181-20	Blade Assembly-inner	1	LM-81610-45	Clip-spring	1
LM-01052-86	Plate-tine	1	LM-01181-32	Bushing-wheel	4	LM-81612-43	Bushing	1
LM-01052-88	Blade Assembly-outer	1	LM-01182-07	Plate-stop	1	LM-81910-20	Spacer	1
LM-01052-89	Blade Assembly-outer	1	LM-01182-35	Control Assembly	1	FASTENING PARTS		
LM-01063-47	Stop-belt	1	LM-01182-37	Housing Assembly	1	LM-01183-15	Washer-thrust	2
LM-01065-45	Belt-stop	1	LM-01182-94	Blade-tine (L. H.)	8	LM-09055-64	5/16-18 x 3/8	1
LM-01065-58	Grip-handle bar	2	LM-01182-95	Blade-tine (R. H.)	8	LM-09077-31	3/8-16 x 1	2
LM-01067-07	Stop-belt	1	LM-01182-98	Cover-upper handle	2	LM-09081-27	3/8-16 x 3/4	3
LM-01067-86	Clamp-cable	1	LM-01183-00	Control-throttle	1	LM-09085-29	1/2-13 x 3-1/4	2
LM-01210-37	Spring	1	LM-01183-12	Belt-V	1	LM-09095-89	Washer-lock, 1/2	1
LM-01543-93	Cup-bearing	2	LM-01183-23	Blade Assembly-inner	1	LM-09105-10	Nut-hex, 1/2-13	4
LM-01544-86	Bearing-roller	2	LM-01183-24	Blade Assembly-inner	1	LM-09137-44	Nut-hex, 1/2-13	4
LM-01544-87	Cup	1	LM-01183-25	Blade Assembly-outer	1	LM-09139-01	Nut-7/16-20	2
LM-01545-34	Pulley-idler	1	LM-01183-26	Blade Assembly-outer	1	LM-09148-80	Nut-hex cap	16
LM-01610-90	Spring-extension	1	LM-01183-35	Spacer	1	LM-09166-22	Nut-1/4-20	4
LM-01610-92	Clamp-wire	3	LM-01183-92	Housing-worm drive	1	LM-09222-49	Bolt-carriage	2
LM-01641-46	Belt-V-forward	1	LM-01183-93	Seal-oil	1	LM-09160-79	10-24 x 3/8	1
LM-01641-91	Plug-button	1	LM-01183-96	Ring-snap	2	LM-09169-50	Nut-3/8-16	10
LM-01650-44	Stop-belt	1	LM-01183-98	Spacer	1	LM-09169-64	Washer-lock, 1/4	8
LM-01703-59	Cover	1	LM-01183-99	Cup	1	LM-09169-65	Washer-lock, 3/8	12
LM-01703-60	Scraper	2	LM-01184-00	Shield	1	LM-09173-56	Washer-lock, 5/16	4
LM-01708-85	Ring-backing	1	LM-01184-02	Cover	1	LM-09173-72	Nut-5/16-18	4
LM-01708-79	Body	1	LM-01184-03	Shield	2	LM-09173-78	Washer-flat, 3/8	2
LM-01708-88	Shaft-worm	1	LM-01184-08	Lever-idler	1	LM-09174-00	3/8-16 x 1-1/4	2
LM-01713-36	Bolt-pivot	1	LM-01184-31	Grip-clutch	1	LM-09174-21	Nut-3/8-16	2
LM-01713-37	Bolt-pivot	1	LM-01184-39	Key	1	LM-09176-42	Washer-flat, 5/16	13
LM-01717-62	Ring-backing	1	LM-01184-47	Clamp	1	LM-09181-99	Washer-7/16	2
LM-01719-87	Pulley-driven	1	LM-01184-49	Grip-clutch	1	LM-09182-40	1/4-20 x 1-1/2	6
LM-01727-51	Lever-idler	1	LM-01184-55	Wire-extension	1	LM-09184-31	Washer-1/2	2
LM-01728-44	Stop-belt	1	LM-01184-57	Pulley-engine	1	LM-09184-51	Pin-cotter	4
LM-01728-45	Stop-belt	2	LM-01184-62	Plug-vent	1	LM-09184-58	Pin-cotter	2
LM-01728-46	Plate	1	LM-01184-63	Shim-engine	6	LM-09193-54	5/16-18 x 2	4
LM-01729-24	Cable	2	LM-01184-66	Handle-(L. H.)	1	LM-09193-60	3/8-16 x 1-1/2	2
LM-01744-42	Film-Homelite	1	LM-01184-67	Handle-(R. H.)	1	LM-09193-57	3/8-16 x 7/8	2
LM-01744-44	Film-throttle	1	LM-01184-69	Wheel & Tire	2	LM-09202-07	1/2-13 x 3	2
LM-01748-44	Film-drive control	1	LM-01184-70	Pulley-driven	1	LM-09204-88	7/16-20 x 1-1/4	18
LM-01749-25	Film-Homelite	1	LM-01184-72	Spacer	1	LM-09213-70	1/2-20 x 1	1
LM-01749-46	Oil-worm gear	1	LM-01184-84	Film-Tiller clutch	1	LM-09219-59	1/4-20 x 5/8	4
LM-01180-20	Bearing-needle	2	LM-01184-85	Film-Tiller clutch	1	LM-09231-88	1/4-20 x 1/2	2
LM-01180-21	Shaft-worm gear	1	LM-01184-92	Worm- (R. H.)	1	LM-09233-58	Nut-lock, 1/4-20	2
LM-01180-22	Gear-worm (R. H.)	1	LM-01184-94	Belt-V, reverse	1	LM-09234-28	Nut-3/8-16	2
LM-01180-24	Gasket	1	LM-01184-95	Spring	1	LM-09239-06	Washer-3/16	2
LM-01180-27	Pulley-engine	1	LM-09016-53	Plug-pipe, 3/8"	1	LM-09257-63	Nut-5/16-18	3
LM-01180-30	Wheel & Tire	2	LM-09051-21	Key-Woodruff	1	LM-09274-28	1/4-20 x 3/8	2
LM-01180-37	Belt-stop	1	LM-09111-71	Key-3/16 x 7/8	1	LM-09280-38	7/16-20 x 1-1/4	2
LM-01180-46	Plate-tine	2	LM-09177-55	Key-Woodruff	1	LM-09286-91	5/16-18 x 5/16	2
LM-01180-53	Pin	4			1	LM-09287-22	10-24 x 5/8	2
LM-01180-81	Bar-depth	1	LM-80610-81	Key	1	LM-09287-27	3/8-16 x 1-1/4	2
LM-01180-83	Blade Assembly-inner	1	LM-80611-08	Cable-clip	1	LM-09287-28	3/8-16 x 1	2
LM-01180-84	Plate-tine	5	LM-81520-01	Blade-tine (L. H.)	2	LM-09287-31	Nut-3/8-16	1
						LM-09287-32	10-24 x 1	2

