

Disney · PIXAR

TOY STORY AND BEYOND!

AGES 4+
03102

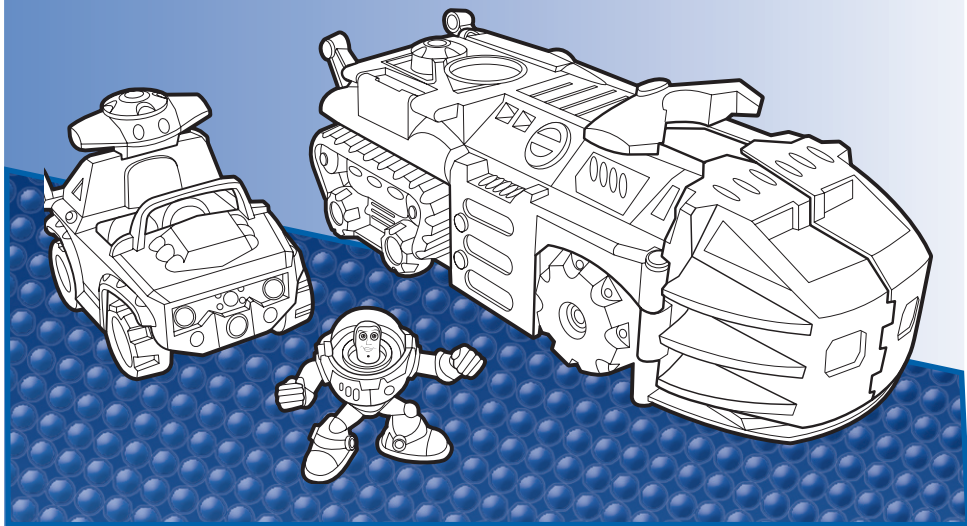


Buzz Lightyear's Electronic Rolling Rescue Station

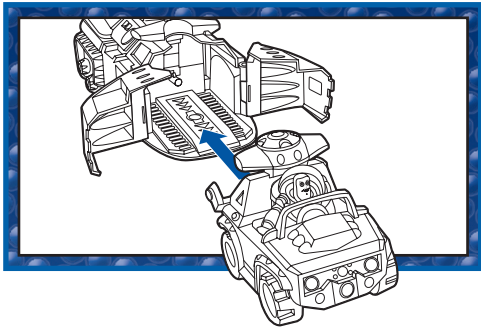
Thank you for purchasing this Toy Story toy! For maximum play value, be sure to read and follow instructions.

Playset comes with Rescue 4x4, launcher, projectile and Buzz Lightyear figure.

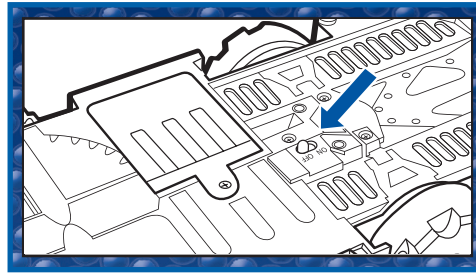
Requires 3 x 1.5V "AA" or R6 size batteries. Alkaline batteries recommended. Phillips/cross head screwdriver (not included) needed to replace batteries.



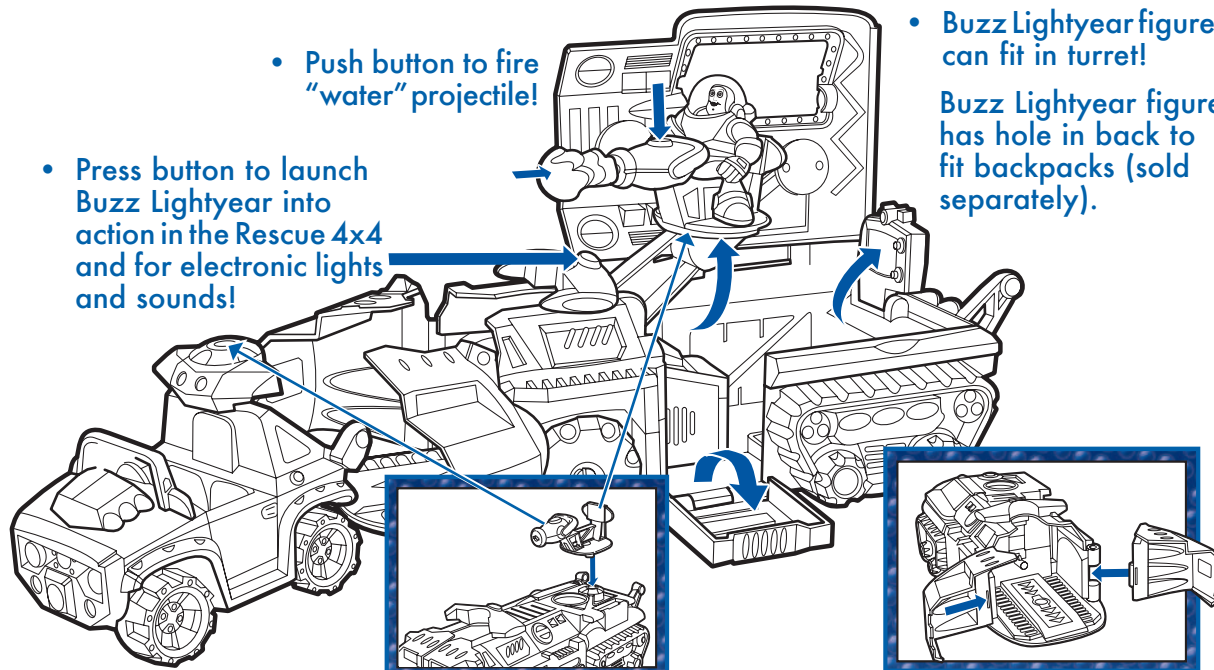
PLAYTIME



- Place Buzz Lightyear figure in rescue 4x4.
- Snap rescue 4x4 into front of Rolling Rescue Station and close doors. Press button to launch.
- Some accessories from other playsets and vehicles (sold separately) can snap on to the rescue 4x4 and/or the Rolling Rescue Station.



- Make sure ON/OFF switch is in "ON" position for electronic lights and speech. Note: To conserve batteries, move switch to "OFF" position when you're not using the playset.



• Push button to fire "water" projectile!

• Buzz Lightyear figure can fit in turret!

Buzz Lightyear figure has hole in back to fit backpacks (sold separately).

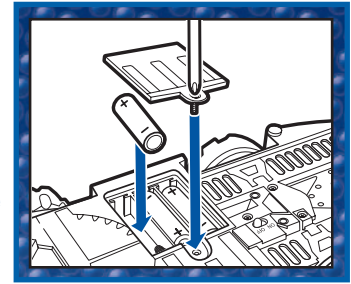
• Press button to launch Buzz Lightyear into action in the Rescue 4x4 and for electronic lights and sounds!

Water cannon turret can snap on in 3 different places!

If door becomes detached, re-attach as shown.

TO REPLACE BATTERIES

Use a Phillips/cross head screwdriver (not included) to loosen screw in battery compartment door (screw remains attached to door). Remove door and discard old batteries. Insert 3 x 1.5V fresh "AA" or R6 size batteries. Alkaline batteries recommended. Replace door and tighten screw.



CAUTION: TO AVOID BATTERY LEAKAGE

1. Be sure to insert the batteries correctly and always follow the toy and battery manufacturers' instructions;
2. Do not mix old and new batteries or alkaline, standard (carbon-zinc) or rechargeable (nickel-cadmium) batteries;
3. Always remove weak or dead batteries from the product.

IMPORTANT: BATTERY INFORMATION

Please retain this information for future reference. Batteries should be replaced by an adult.



CAUTION:

1. Always follow the instructions carefully. Use only batteries specified and be sure to insert item correctly by matching the + and - polarity markings.
2. Do not mix old and new batteries or standard (carbon-zinc) with alkaline batteries.
3. Remove exhausted or dead batteries from the product.
4. Remove batteries if product is not to be played with for a long time.
5. Do not short-circuit the supply terminals.
6. Should this product cause, or be affected by, local electrical interference, move it away from other electrical equipment. Reset (switching off and back on again or removing and re-inserting batteries) if necessary.
7. **RECHARGEABLE BATTERIES:** Do not mix these with any other types of batteries. Always remove from the product before recharging. Recharge batteries under adult supervision. **DO NOT RECHARGE OTHER TYPES OF BATTERIES.**

FCC STATEMENT

This device complies with part 15 of the FCC Rules. Operation is subject to the following two conditions: (1) This device may not cause harmful interference, and (2) this device must accept any interference received, including interference that may cause undesired operation. This equipment has been tested and found to comply with the limits for a Class B digital device, pursuant to part 15 of the FCC Rules. These limits are designed to provide reasonable protection against harmful interference in a residential installation. This equipment generates, uses and can radiate radio frequency energy, and, if not installed and used in accordance with the instructions, may cause harmful interference to radio communications. However, there is no guarantee that interference will not occur in a particular installation. If this equipment does cause harmful interference to radio or television reception, which can be determined by turning the equipment off and on, the user is encouraged to try to correct the interference by one or more of the following measures:

- Reorient or relocate the receiving antenna.
- Increase the separation between the equipment and receiver.
- Consult the dealer or an experienced radio/TV technician for help.



© Disney/Pixar
®* and/or ™* & © 2004 Hasbro. All Rights Reserved.
™ & ® denote U.S. Trademarks.
03102 P/N 646100000



Questions? Call: 1-800-327-8264