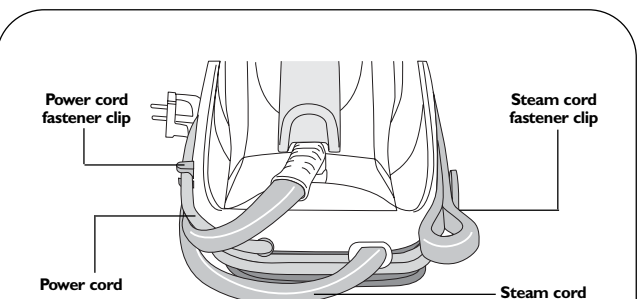
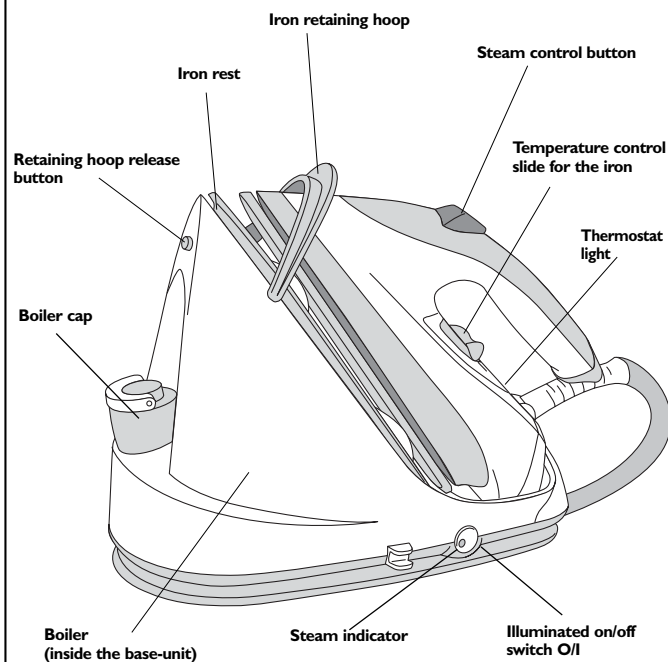


**PRO MINUTE**

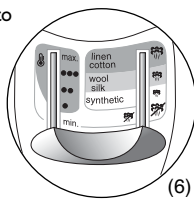
016806 - 14/05

**I - UNDERSTANDING YOUR STEAM GENERATOR****5- USING YOUR STEAM GENERATOR**

- Place the iron's temperature control slide according to the type of fabric to be ironed (6).
- The thermostat light comes on.

**Be careful :**

The steam generator and the iron are ready to use when both the iron's thermostat and the steam indicator go out.



SETTING THE TEMPERATURE CONTROL SLIDE  
ACCORDING TO TYPE OF FABRIC TO BE IRONED

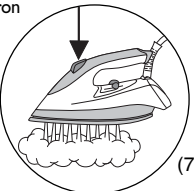
Type of fabric	Setting temperature control slide
Linen Cotton ●●●	
Wool Silk, Viscose ●●	
Synthetic, Polyester, Acetate, Acrylic, Polyamide ●	

To obtain steam, press on the steam control button on the iron handle (7).

The steam will stop when you release the button.

It is recommended that you start with fabrics to be ironed at a low temperature : synthetics (●).

For delicate fabrics (●●), press the steam control button (on the handle of the iron) intermittently to avoid possible water droplets appearing with the steam.

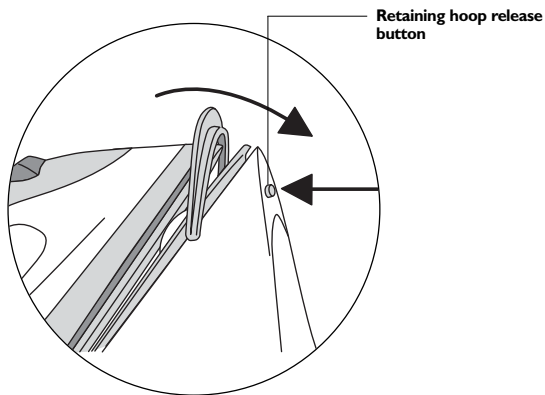
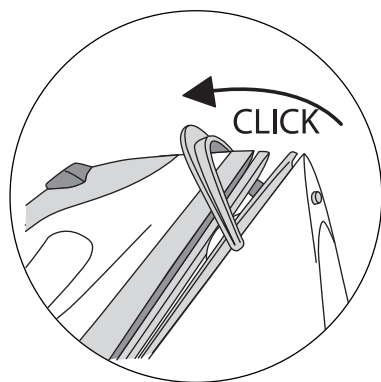
**Recommendations :**

- To prime the steam circuit, either before using the iron for the first time, or if you have not used the steam function for a few minutes, press the steam control button several times in a row, holding the iron away from your clothes. This will enable any cold water to be removed from the steam circuit.
- IRON TEMPERATURE CONTROL SLIDE SETTING :**
  - Start with the fabrics to be ironed at a low temperature (●) and finish with those which need higher temperatures (●●● or Max).
  - Mixed fibre fabrics : set the ironing temperature to the setting for the most delicate fabric.
  - Woollen garments : press repeatedly on the steam control button to obtain short bursts of steam, without placing the iron on the garment itself. This will avoid making the fabric shiny
- TO IRON WITHOUT USING STEAM :** Do not press on the steam control button on the iron handle.
- IRONING BOARD :** For best results, a mesh type ironing board should be used to allow any excess steam to escape.
- If you are using starch, it should be sprayed onto the reverse side of the fabric to be ironed.

**2- LOCKING SYSTEM FOR RETAINING THE IRON ON THE BASE**

Your steam generator is fitted with a system for retaining the iron on its casing.

- Locking hoop for retaining iron for ease of carriage.
- Hoop release button to free the iron for use.

**Type of water to use ?**

Your steam generator has been designed to operate using untreated tap water. If your water is very hard, mix it 50 % untreated tap water with 50 % distilled water.

**Types of water to be avoided ?**

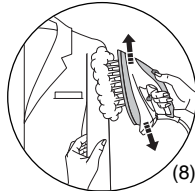
Do not use water from clothes dryers, scented water, water from refrigerators, water from air conditioners or rain water. Also do not use filtered, boiled or bottled mineral water. These contain organic waste or mineral elements that become concentrated when heated and cause spitting, brown staining or premature wear to your iron.

**6- VERTICAL STEAM IRONING**

- Set the iron temperature control slide to the MAX position.
- Hang the garment on a coat hanger and hold the fabric slightly taut with one hand.

As steam is very hot, never attempt to remove creases from a garment while it is being worn, always hang garment on a coat hanger.

- Holding the iron in a vertical position, tilted slightly forwards, press repeatedly on the steam control button (on the iron handle) moving the iron from top to bottom (8).



**Recommendations :** for fabrics other than linen or cotton, hold the iron a few centimetres from the garment to avoid burning the fabric.

**7. FILLING THE BOILER WHILE IN USE (when the boiler is empty)****VERY IMPORTANT :**

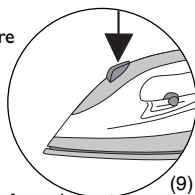
Before opening your boiler, ensure that there is no more steam left inside by pressing the steam control button located on the handle of the iron and keep it pressed down until there is no more steam (9).

**Never unscrew the boiler cap while the iron is producing steam.**

- Press the on/off switch and disconnect the generator from the mains.
- Slowly unscrew the boiler cap.
- Using a water jug, fill with maximum one 1/2 litre of water.
- Fill the boiler, taking care that the water does not spill over. If this occurs, remove the excess water.

Replace the boiler cap, screwing on tightly, reconnect your generator to the mains, and switch it on.

- Wait until the boiler heats up (about 4 minutes).



The generator and the iron are ready to use when both the iron's thermostat light and the steam indicator go out.

**8- MAINTAINING YOUR STEAM GENERATOR**

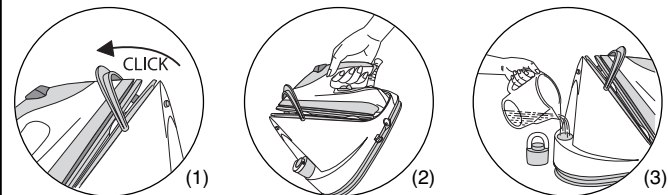
- Before cleaning, ensure that your steam generator is unplugged and that the soleplate and the iron rest have cooled down.
- Do not use detergent or descaling products for cleaning the soleplate or the base unit.
- Never hold the iron or the base unit under the tap.
- Do not place the iron on a metal rest as this could damage it. Place it on the iron-rest on the base unit : it has non-slip pads and has been designed to withstand high temperatures.

**The iron soleplate :**

Regularly clean the soleplate with a damp, non-metallic washing up pad.

**The base unit :**

Clean the plastic parts of the appliance occasionally with a soft cloth.

**3- PREPARING YOUR STEAM GENERATOR**

- To carry your steam generator by the iron handle:

- place the iron on the iron rest of the generator and raise the retaining hoop over the iron until it locks into place (audible click) (1).
  - grasp the handle of the iron to carry your steam generator (2).
- Place your steam generator on a stable, horizontal heat-resistant surface.
  - Check that your appliance is disconnected and cold.
  - Unscrew the boiler cap.
  - Using a water jug, fill with maximum 1/2 litre of water.
  - Fill the boiler, taking care that the water does not spill over (3). If this occurs, remove the excess water.
  - Replace the boiler cap, screwing on tightly.

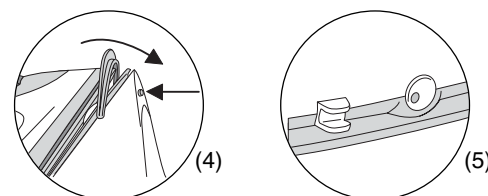
**4- USING YOUR STEAM GENERATOR**

- Press the release button to lower the iron retaining hoop (4).
- Connect your generator to an earthed socket.

- Press the On/Off switch O/I.

The steam indicator turns on and the boiler heats up.

When the indicator goes out (after about 4 minutes), steam is ready (5).



During ironing the iron's thermostat light and the steam indicator will go on and off according to the temperature control.

**Be careful :**

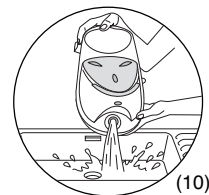
The first time the appliance is used, there may be some fumes and smell but this is not harmful. They will not affect use and will disappear rapidly.

**9. RINSING OUT THE BOILER****Be careful :**

- To extend the life of your boiler and to avoid the building up of scale, it is essential that you rinse out the boiler after every 10 uses. If your water is hard, increase the frequency.
- In particular, do not use descaling agents for rinsing out the boiler, as they could damage it.

- Check that the generator is cold and unplugged for more than 1 hour.

- With a jug, fill the boiler 3/4 full with tap water.
- Shake the base unit for a few moments and then empty it completely over your sink (10).



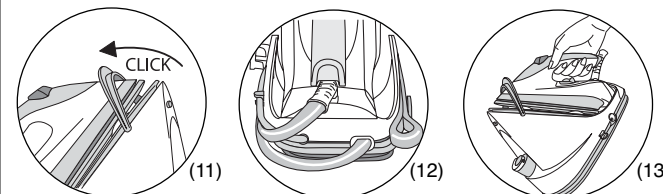
To obtain the best results, we advise you to repeat this operation.

**10- PUTTING YOUR STEAM GENERATOR AWAY**

- Place the iron on the rest.
- Turn off at the main O/I switch and unplug.
- Raise the retaining hoop over the iron until it locks into place (audible click) (11). Your iron is then safely retained on its casing.

**Warning: do not touch the soleplate while still hot.**

- Leave the steam generator to cool down before putting it away if it is stored in a cupboard or confined space.
- Store the steam cord and the power cord by winding them around the base-unit and attaching them in their corresponding storage clip (12).
- You can then put your steam generator away, carrying it by the handle (13).



## 11- SAFETY RECOMMENDATIONS

- For your safety, this appliance conforms to the applicable standards and regulations (Low Voltage, Electromagnetic Compatibility, Materials in contact with foodstuffs, Environmental Directives, as applicable ...).
- Your steam generator is an electrical appliance. It should be used under normal conditions. It is intended for domestic use only.
- Your generator is fitted with 2 safety systems :
  - A pressure release valve which, in the event of a malfunction, releases any excess steam.
  - A thermal fuse to prevent the appliance from overheating.
- **This appliance is not intended to be used by children or without supervision by persons whose physical, sensory or mental aptitude to use it in complete safety is impaired. Children must be supervised to ensure that they do not play with the appliance.**
- **The appliance must be used and placed on a flat, stable, heat-resistant surface.**
- **When you place the iron on the iron rest, make sure that the surface on which you place it is stable.**
- Always plug your steam generator into :
  - An electrical installation with voltage between 120V and 240V. Connecting to the wrong voltage may cause irreparable damage to the appliance and will invalidate your guarantee.
  - An earthed socket. If you are using a mains extension lead, ensure that it is correctly rated (10A) with an earth, and is fully extended.
- Should the power cord or the boiler cord linking the iron to the base unit become damaged, it must be replaced by a TEFAL approved service centre in order to avoid any danger.
- **Be careful :**
  - The soleplate and generator iron-rest can become very hot and cause burns : never touch these parts.
  - If you store your appliance in a cupboard or confined space, make sure that you let it cool down before putting it away.
  - Your appliance gives off steam which can cause burns.
  - Handle your iron carefully, particularly when using the vertical function.
  - **Never direct the steam towards persons or animals.**
  - **Never touch the electric cord with the soleplate of the iron.**
  - Never leave the appliance unattended :
    - when it is connected to the mains ;
    - until it has cooled down (around 1 hour).
  - **Do not unplug the appliance by pulling on the cord.**
- Always unplug your appliance :
  - before filling or rinsing the boiler,
  - before cleaning your generator,
  - after each use.
- In order to unscrew the boiler cap, always ensure that :
  - either your generator is cold (that is, unplugged for over 1 hour) ;
  - or there is no more pressure in the boiler (the iron does not produce any steam when the steam control button is activated).
- In all other cases, never attempt to unscrew the boiler cap while it is in use : the strong steam pressure could cause burns.
- **Be careful :** If the boiler cap is dropped or severely knocked, have it replaced by a TEFAL Approved Service Centre, as it may be damaged.
- Never immerse your steam generator in water or any other liquid. Never hold it under the water tap.
- While rinsing out the boiler, never fill it directly under the tap.
- The appliance must not be used if it has fallen to the floor, shows evidence of damage, leaks or fails to function correctly. Never dismantle your appliance. To avoid any danger, have it inspected in a TEFAL approved service centre.
- This appliance is designed for domestic use only. In the case of professional use, inappropriate use or failure to comply with the instructions, TEFAL accepts no responsibility and the guarantee does not apply.

## ENVIRONMENT PROTECTION FIRST !

- Your appliance contains valuable materials which can be recovered or recycled.
- Take it to a local civic waste collection point.



## 12- IS THERE ANY PROBLEM



PROBLEMS	POSSIBLE CAUSES	SOLUTIONS
• Water runs through the holes in the soleplate.	<ul style="list-style-type: none"> <li>• The boiler is too full.</li> <li>• The thermostat is not working : the temperature is always too low.</li> <li>• You are using the steam control button before the iron is hot enough.</li> <li>• Water has condensed in the pipes because you are using steam for the first time or you have not used it for some time.</li> </ul>	<ul style="list-style-type: none"> <li>• Do not fill the boiler right up to the top.</li> <li>• Contact an Approved Service Centre.</li> <li>• Wait for the iron's thermostat light to come on and go off again before activating the steam control button.</li> <li>• Press the steam control button away from your ironing board until the iron produces steam.</li> </ul>
• White streaks come through the holes in the soleplate.	• Your boiler has a build-up of scale because it is not rinsed out regularly.	• Rinse the boiler at least every 10 uses (see chapter 9). If your water is hard, increase the frequency.
• Brown streaks come through the holes in the soleplate and stain the linen.	<ul style="list-style-type: none"> <li>• You are using chemical descaling agents or additives in the water for ironing.</li> <li>• You are using the wrong type of water.</li> <li>• Your linen is not rinsed sufficiently or you have ironed a new garment before washing it.</li> <li>• Fabrics fibres have accumulated in the holes of the soleplate and are burning.</li> </ul>	<ul style="list-style-type: none"> <li>• Never add this type of product in the boiler (see our recommendation regarding water to be used).</li> <li>• See section "Type of water to use".</li> <li>• Ensure linen is rinsed thoroughly to remove any soap deposits or chemical on new garments which have been sucked up by the iron.</li> <li>• Carry out a self-clean and clean the soleplate with a non-metallic sponge.</li> </ul>
• The soleplate is dirty or brown and may stain the linen.	<ul style="list-style-type: none"> <li>• You are ironing at too high a temperature.</li> <li>• You are using starch.</li> </ul>	<ul style="list-style-type: none"> <li>• See our recommendations regarding temperature control setting.</li> <li>• Always spray starch on the reverse side of the fabric to be ironed.</li> </ul>
• There is no steam.	<ul style="list-style-type: none"> <li>• The boiler is empty.</li> <li>• The boiler is not yet ready.</li> </ul>	<ul style="list-style-type: none"> <li>• Fill the boiler.</li> <li>• After switching on, wait for the steam thermostat light to go out (about 4 minutes).</li> </ul>
• Steam escapes from the boiler cap.	<ul style="list-style-type: none"> <li>• Cap screwed on incorrectly.</li> <li>• The seal on the cap is damaged.</li> </ul>	<ul style="list-style-type: none"> <li>• Screw the cap back on.</li> <li>• Change the cap seal (spare seals supplied with the steam generator in the box).</li> </ul>
• Steam escapes under the appliance.	• The equipment is faulty.	• Stop using the generator and contact an Approved Service Centre.

**Never dismantle your iron : always take it to an Approved Service Centre.**