


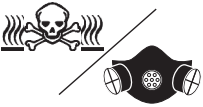
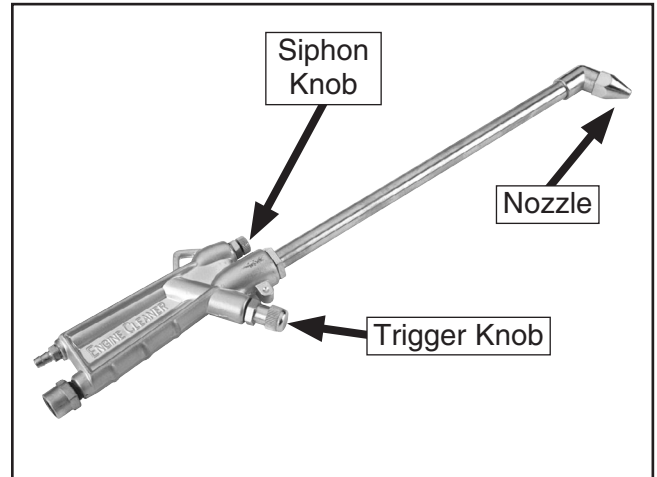




# MODEL H3266 ENGINE CLEANING GUN INSTRUCTION SHEET

<b>⚠ WARNING</b>	
	<b>EYE/EAR INJURY HAZARD!</b> Wear safety glasses and hearing protection when using this tool!
	<b>INJURY HAZARD!</b> Always disconnect tool from air to prevent unexpected operation during service!
	<b>DO NOT EXCEED 90 PSI!</b> Personal injury could occur.
	<b>EXPLOSION HAZARD!</b> Do not spray flammable fluids near and open flame or ignition source.
	<b>LUNG HAZARD!</b> Always wear a respirator when using this tool and use in a well ventilated area.



**Figure 1.** Model H3266 (siphon hose not shown).

- To adjust the amount of solution being used, rotate the siphon knob; to adjust the amount of air flow; rotate the trigger knob.
- Hold the gun so the nozzle is 6–10" from the surface and squeeze the trigger knob.
- When you are done, place the siphon hose into a clean bucket of water and spray until the gun sprays clean water.

## Specifications

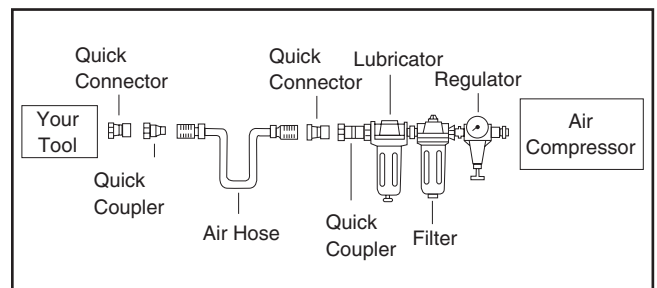
Air Inlet Size ..... 1/4" NPT  
 Air Consumption..... 12 CFM  
 Operating Pressure ..... 90 PSI  
 Wand Length ..... 9"  
 Weight ..... 11 lbs

## Operation

- Make sure the engine is cool to the touch, and disconnect the positive battery cable.
- Connect the engine cleaning gun (**Figure 1**) to an air supply set at 60 PSI. Adjust the trigger knob until there is no air escaping from the cleaning gun.
- Connect the siphon hose to the cleaning gun and place the other end into an approved container of engine cleaning solution.

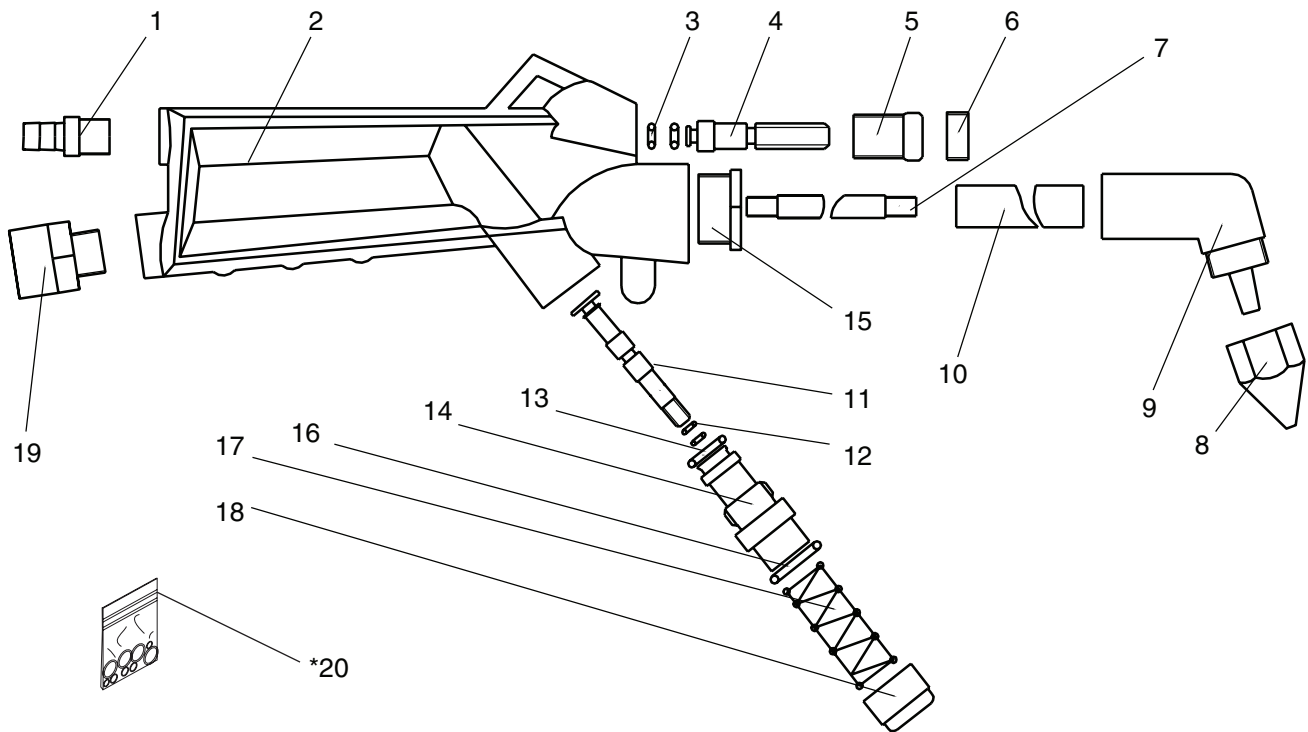
## Air Supply

The engine cleaning gun **MUST** be regularly lubricated with 3-4 drops of air tool oil directly into the air fitting before each use. For best results, we recommend using an in line filter, lubricator, and regulator, as shown in **Figure 2**.



**Figure 2.** Installing your tool.

# H3266 Parts Breakdown and List



REF	PART #	DESCRIPTION
1	PH3266001	1/4" NPT MALE QUICK CONNECT
2	PH3266002	GUN BODY
3	PH3266003	O-RING
4	PH3266004	REGULATOR VALVE ROD
5	PH3266005	SIPHON KNOB
6	PH3266006	SIPHON KNOB COVER
7	PH3266007	SUCTION TUBE
8	PH3266008	NOZZLE CAP
9	PH3266009	NOZZLE HEAD
10	PH3266010	WAND

REF	PART #	DESCRIPTION
11	PH3266011	ROD
12	PH3266012	O-RING
13	PH3266013	O-RING
14	PH3266014	SWITCH BASE
15	PH3266015	SPECIAL NUT
16	PH3266016	O-RING
17	PH3266017	COMPRESSION SPRING
18	PH3266018	SWITCH CAP
19	PH3266019	AIR INLET
*20	PH3266020	O-RING KIT

\* Not Included; for aftermarket purchase only

If you need help with your new pneumatic tool, call our Tech Support at: (570) 546-9663.

COPYRIGHT © MAY, 2008 BY GRIZZLY INDUSTRIAL, INC.  
**WARNING: NO PORTION OF THIS MANUAL MAY BE REPRODUCED IN ANY SHAPE OR FORM WITHOUT THE WRITTEN APPROVAL OF GRIZZLY INDUSTRIAL, INC.**  
 #JM10774 PRINTED IN CHINA