



# MODEL H5382

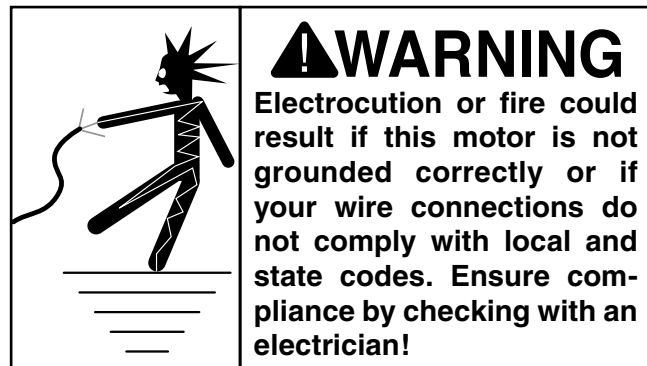
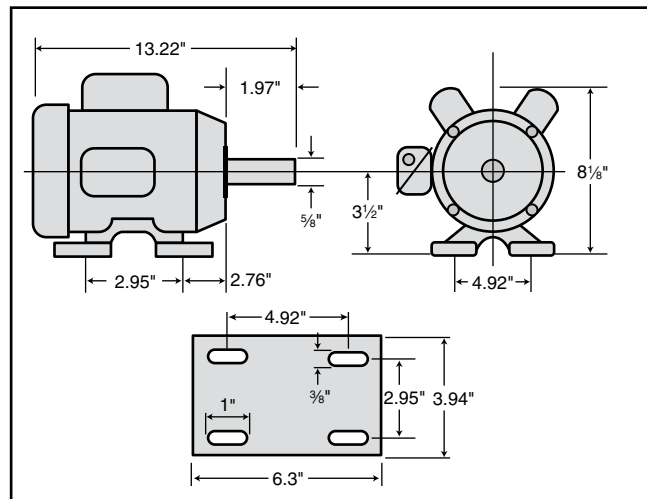
## 1½ HP ELECTRIC MOTOR

### INSTRUCTIONS

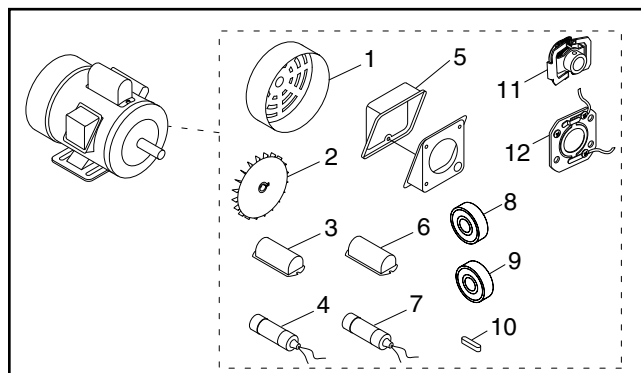
For questions or help with this product contact Tech Support at (570) 546-9663 or techsupport@grizzly.com

#### Model H5382 Specifications

Power..... 1½ HP  
 Cycle..... 60 Hz  
 Voltage..... 110V/220V  
 Prewired ..... 110V  
 Amps ..... 15.6A/7.8A  
 Speed ..... 3450 RPM  
 Phase ..... Single-Phase  
 Class..... B  
 Start Capacitor ..... 400MFD 125VAC  
 Dimensions..... 1¾"D x 3⅜"L  
 Run Capacitor..... 25MFD 250VAC  
 Dimensions..... 1⅜"D x 2⅜"L



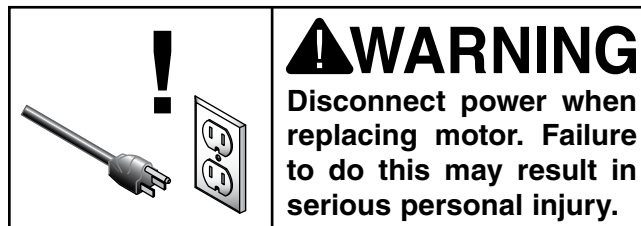
#### Replaceable Parts



REF	PART #	DESCRIPTION
1	PH5382001	MOTOR FAN COVER
2	PH5382002	MOTOR FAN
3	PH5382003	S CAPACITOR COVER
4	PH5382004	S CAPACITOR 400M 125V 1-3/4 X 3-3/8
5	PH5382005	JUNCTION BOX
6	PH5382006	R CAPACITOR COVER
7	PH5382007	R CAPACITOR 25M 250V 1-3/8 X 2-3/8
8	PH5382008	BALL BEARING 6202ZZ
9	PH5382009	BALL BEARING 6203ZZ
10	PH5382010	KEY 5 X 5 X 35
11	PH5382011	CENTRIFUGAL SWITCH 3450 RPM
12	PH5382012	CONTACT PLATE

#### Making Wire Connections

If you are unsure how to attach wires to terminals, DO NOT continue. Contact an electrician for assistance. Connecting wires improperly may cause them to come loose or contact other wires, which can cause electrocution, fire, or a short.



# H5382 Wiring Diagram



**NOTICE**  
The motor wiring shown here is current at the time of printing, but it may not match your motor. Always use the wiring diagram inside the motor junction box.

COLOR KEY	
BLACK	Bk
WHITE	Wt
GREEN	Gn
RED	Rd
YELLOW	Yl
BLUE	Bl

