



3/8" REVERSIBLE AIR DRILL MODEL H6362 INSTRUCTION SHEET

Introduction

This compact 3/8" Reversible Air Drill features a pistol grip handle, 1800 RPM free speed, and 3/8" drilling capacity. Average air consumption is 6 CFM and the recommended air pressure is 90 PSI. Includes a 1/4" NPT quick connect fitting and chuck key.

Inventory

- A. Air Drill..... 1
- B. 1/4" NPT Quick Connect Fitting (male)..... 1
- C. Chuck Key..... 1

Lubricating Your New Air Drill

Lubricate your air drill with pneumatic tool oil. If you do not have a lubricator installed in your air line, place one drop of pneumatic tool oil into the air fitting daily, as shown in **Figure 2**.



Figure 1. Model H6362.

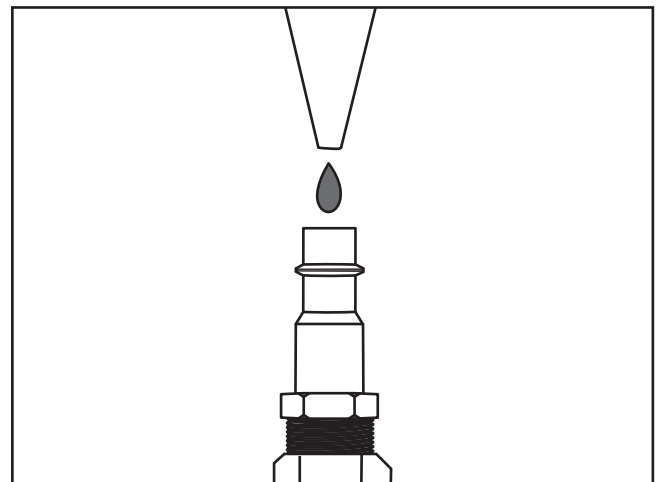
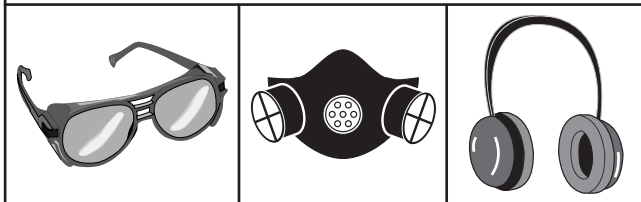


Figure 2. Lubricating the Model H6362.

!WARNING

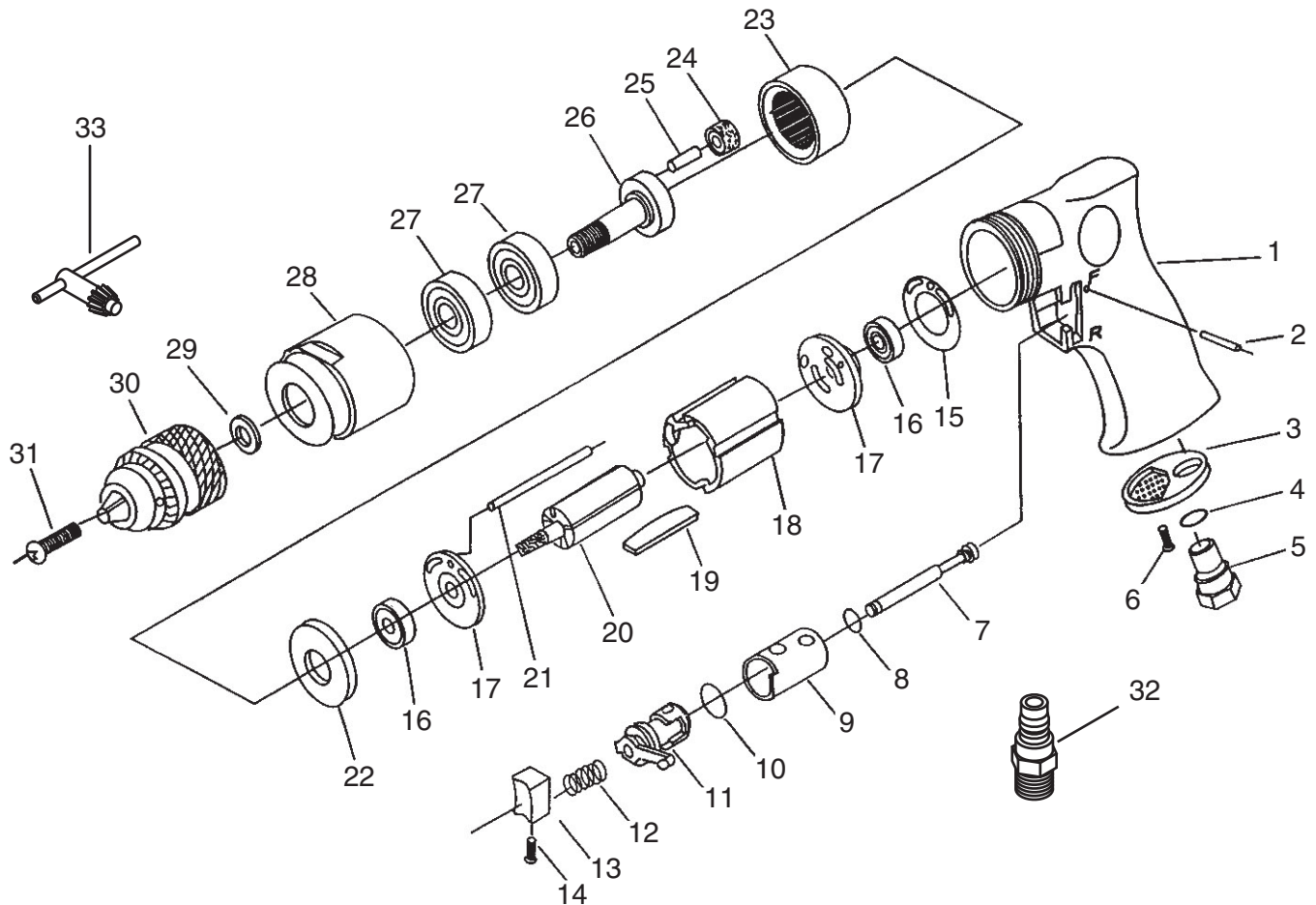
Damage to your eyes, lungs, and ears could result from using this drill without proper protective gear. Always wear safety glasses, a respirator, and hearing protection while drilling.



Need Help?

If you need help with your new air drill, call our service department at: (570) 546-9663.

H6362 Parts Breakdown and List



| Ref # | Part # | Description |
|-------|-----------|-----------------------|
| 1 | PH6362001 | HOUSING |
| 2 | PH6362002 | SPRING PIN |
| 3 | PH6362003 | EXHAUST DEFLECTOR |
| 4 | PH6362004 | O-RING |
| 5 | PH6362005 | AIR FITTING CONNECTOR |
| 6 | PH6362006 | SPECIAL SCREW |
| 7 | PH6362007 | VALVE STEM |
| 8 | PH6362008 | O-RING |
| 9 | PH6362009 | REVERSE BUSHING |
| 10 | PH6362010 | O-RING |
| 11 | PH6362011 | REVERSE LEVER |
| 12 | PH6362012 | SPRING |
| 13 | PH6362013 | TRIGGER |
| 14 | PSS81M | SET SCREW M3-.5 X 5 |
| 15 | PH6362015 | MOTOR GASKET |
| 16 | PH6362016 | BEARING |
| 17 | PH6362017 | END PLATE |

| Ref # | Part # | Description |
|-------|-----------|---------------------------|
| 18 | PH6362018 | CYLINDER |
| 19 | PH6362019 | ROTOR BLADE |
| 20 | PH6362020 | ROTOR |
| 21 | PH6362021 | PIN |
| 22 | PH6362022 | SPACER |
| 23 | PH6362023 | INTERNAL GEAR |
| 24 | PH6362024 | PLANET GEAR |
| 25 | PH6362025 | PIN |
| 26 | PH6362026 | WORK SPINDLE |
| 27 | PH6362027 | BEARING |
| 28 | PH6362028 | CLAMP NUT |
| 29 | PH6362029 | GASKET |
| 30 | PH6362030 | DRILL CHUCK |
| 31 | PH6362031 | CHUCK SCREW |
| 32 | PH6362032 | 1/4" NPT MALE AIR FITTING |
| 33 | PH6362033 | CHUCK KEY |