



# 10 TON LOG SPLITTER

**Model 39981**

## ASSEMBLY & OPERATING INSTRUCTIONS



Diagrams within this manual may not be drawn proportionally.  
Due to continuing improvements, actual product may differ slightly from the product described herein.

**Distributed exclusively by Harbor Freight Tools®.**

3491 Mission Oaks Blvd., Camarillo, CA 93011

Visit our website at: <http://www.harborfreight.com>



**Read this material before using this product.  
Failure to do so can result in serious injury.  
SAVE THIS MANUAL.**

Copyright© 1999 by Harbor Freight Tools®. All rights reserved. No portion of this manual or any artwork contained herein may be reproduced in any shape or form without the express written consent of Harbor Freight Tools.

**For technical questions or replacement parts, please call 1-800-444-3353.**

THANK YOU for choosing a **HARBOR FREIGHT TOOLS** product. For future reference, please complete the owner's record below:

**Model** \_\_\_\_\_ **Serial No.** \_\_\_\_\_ **Purchase Date** \_\_\_\_\_

SAVE THE RECEIPT, WARRANTY AND THESE INSTRUCTIONS. It is important that you read the entire manual to become familiar with the unit BEFORE you begin assembly.

### **Technical Specifications**

<b>Tool Name:</b>	Log Splitter-10 Ton Horizontal
<b>Item Number:</b>	39981
<b>Capacity:</b>	10 Ton
<b>Ram Diameter:</b>	1.572"
<b>Ram Travel:</b>	7"
<b>Minimum Log Capacity:</b>	15-1/2" Long
<b>Maximum Log Capacity:</b>	18-1/2" Long
<b>Maximum Log Diameter:</b>	6-1/2"
<b>Weight:</b>	100 Lbs.
<b>Overall Length:</b>	12-1/8"
<b>Overall Width:</b>	7-1/4"
<b>Overall Height:</b>	43"
<b>Handle Length:</b>	29-1/2"



### ***READ ALL INSTRUCTIONS BEFORE USING THIS PRODUCT!***

**Warning:** The warnings, cautions and instructions discussed in this instruction manual cannot cover all possible conditions and situations that may occur. It must be understood by the operator that **COMMON SENSE AND CAUTION ARE FACTORS WHICH CANNOT BE BUILT INTO THIS PRODUCT, BUT MUST BE SUPPLIED BY THE OPERATOR.**

#### **The Operator**

PLEASE REMEMBER:

Do not operate the product if under the influence of alcohol or drugs. Read warning labels on prescriptions to determine if your judgment/reflexes might be impaired.

Do not wear loose clothing or jewelry as they can be caught in moving parts.

Protective gloves and non-skid footwear is recommended.

Wear restrictive hair covering to contain long hair.

Use eye and ear protection. Always wear ANSI approved impact safety goggles.

Maintain proper footing and balance at all times.

## **Work Area**

TO AVOID RISK OF PERSONAL INJURY, EQUIPMENT DAMAGE, FIRE AND SHOCK, MAKE SURE YOUR **WORK AREA IS:**

Free of damp, wet or rainy conditions.

Free of children (never let them handle tools or machinery).

Well-lit.

Clean and uncluttered.

## **Before Operating**

Before using any tool, any part that appears damaged should be carefully checked to determine that it will operate properly and perform its intended function.

Before operating your Log Splitter check for damaged parts. You should also:

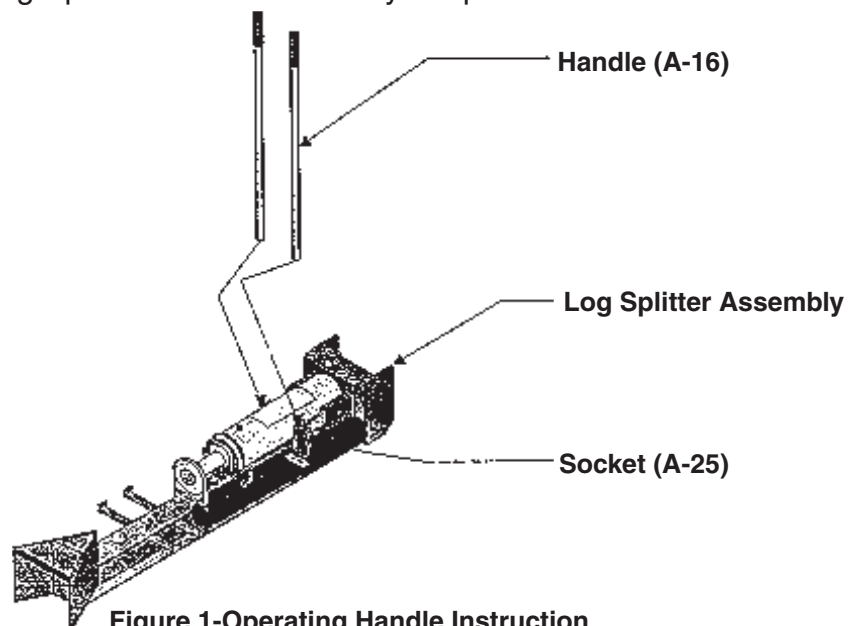
Make sure all clamps, locks and bolts are tight.

Keep Guards in place and in working order.

## **Assembly**

Your Log Splitter requires some limited assembly. Please refer to Figure 1, and to the Assembly Diagram on page 7 and Parts List on page 6 as needed for assembly and operation. Unpack the Log Splitter at the place that you will be using it. The Log Splitter is heavy, so be certain to use proper lifting techniques when moving and placing the Log Splitter.

To complete the assembly, insert each Handle (A-16) into each Socket (A-25) as shown in Figure 1. Your Log Splitter will then be ready to operate.

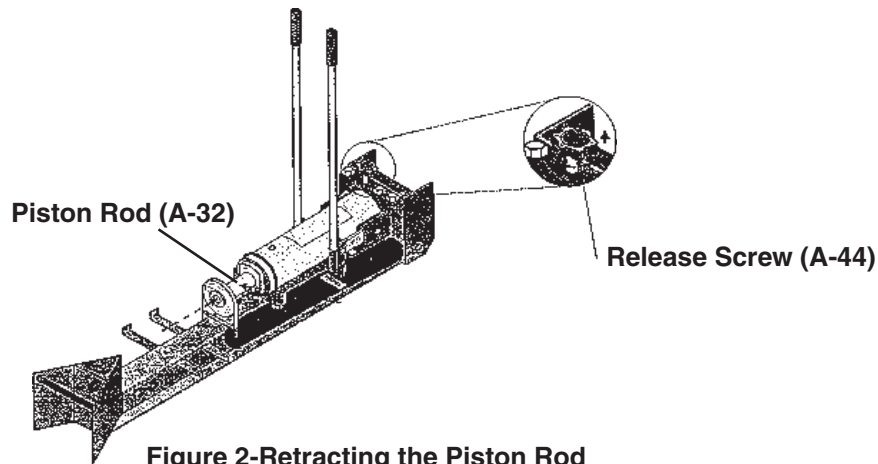


**Figure 1-Operating Handle Instruction**

## Operation

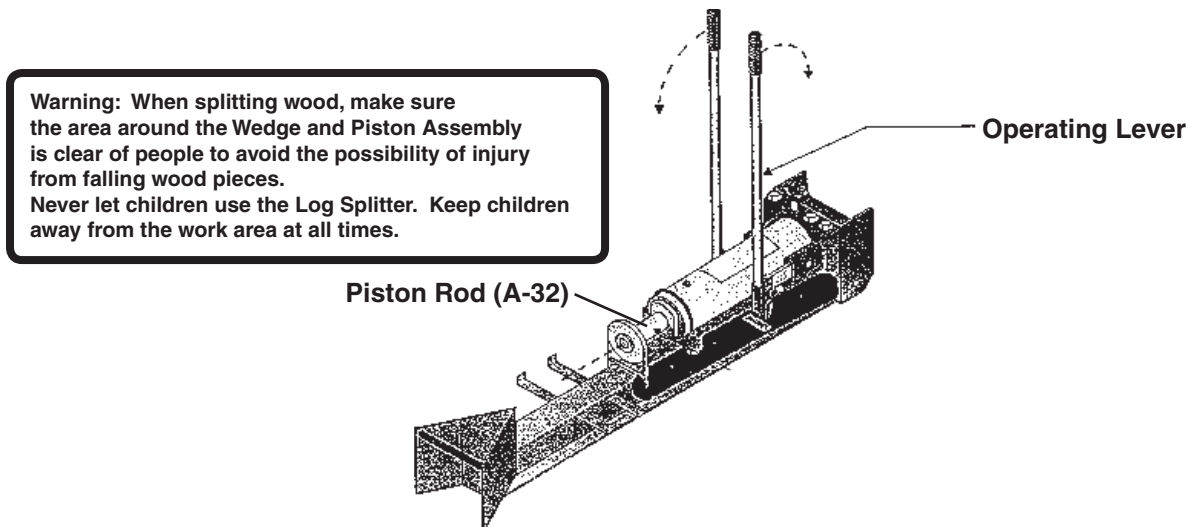
Never force the tool or attachment to do the work of a larger industrial tool. It is designed to do the job better and more safely at the rate for which it was intended.

- Step 1) Make certain that the maximum length of each log to be split does not exceed 18-1/2". If the log exceeds this length, it must be cut to no longer than 18-1/2".
- Step 2) Make certain that the Piston Rod (A-32) is fully retracted into the Cylinder (A-36). If not fully retracted, turn the Release Screw (A-44) counterclockwise to release the hydraulic pressure. Once this is completed, and the Piston Rod is fully retracted into the Cylinder, tighten the Release Screw.



**Figure 2-Retracting the Piston Rod**

- Step 3) Place the log between the Wedge and the Piston Assembly, resting the log in the metal Cradle.
- Step 4) Grip one Handle (A-16) in each hand and move them in a back-and-forth motion with one lever being pushed fully forward and one lever being pulled fully rearward. Please see [Figure 3](#) for illustration of this step.



**Piston Rod (A-32)**

**Operating Lever**

**Figure 3-Operation of the Log Splitter**

- Step 5) Repeat Step 4 to advance the Piston Rod (A-32) forward. This will push the log against the Wedge and split the log.
- Step 6) Once the Log is split, remove the pieces from the Log Splitter. Turn the Release Screw counterclockwise so that the Piston retracts back into the Cylinder as in Step 2 (see Figure 2). Tighten the Release Screw once the Piston Rod is fully retracted.
- Step 7) Continue the preceding steps until all logs have been split. Once completed, your Log Splitter should be stored with the Release Screw (A-49) opened so that any hydraulic pressure is relieved during non-use.

---

IF THERE IS ANY QUESTION ABOUT A CONDITION BEING SAFE OR UNSAFE, DO NOT OPERATE THE TOOL.

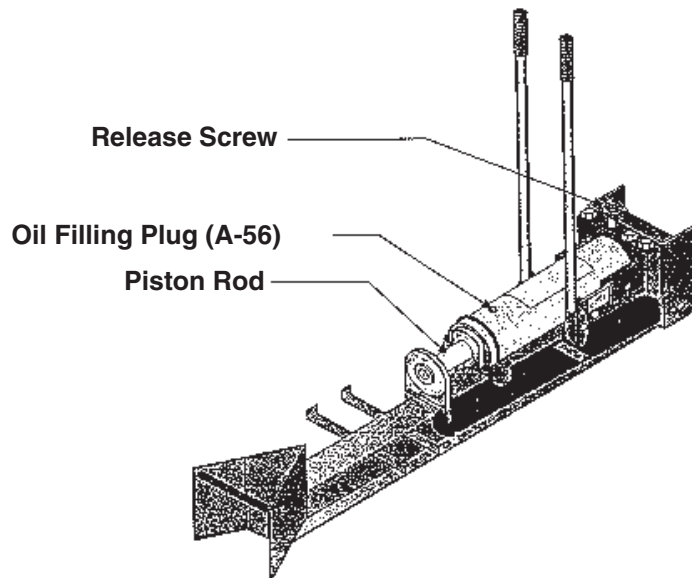
---

### **Maintenance**

After every use, wipe down the Log Splitter to remove any tree sap or dirt occurring during use. This will extend the use of the Log Splitter.

### **Bleeding the Log Splitter**

- Step 1) Operate the Log Splitter so that the Piston Rod (A-32) is extended to its maximum length.
- Step 2) Remove the Oil Filling Plug (A-56) as shown in Figure 4.



**Figure 4-Bleeding the Log Splitter**

- Step 3) Turn the Release Screw (A-44) counterclockwise as fast as possible. The Piston Rod will retract into the Cylinder and push air out of the Oil Filling Hole.
- Step 4) Replace the Oil Filling Plug. Repeat steps one (1) through four (4) as necessary.

### **Adding Oil**

- Step 1) The Log Splitter uses Hydraulic oil. If you need to add oil to the Log Splitter, remove the Oil Filling Plug and add oil until the Log Splitter is 3/4 full.

## Unpacking

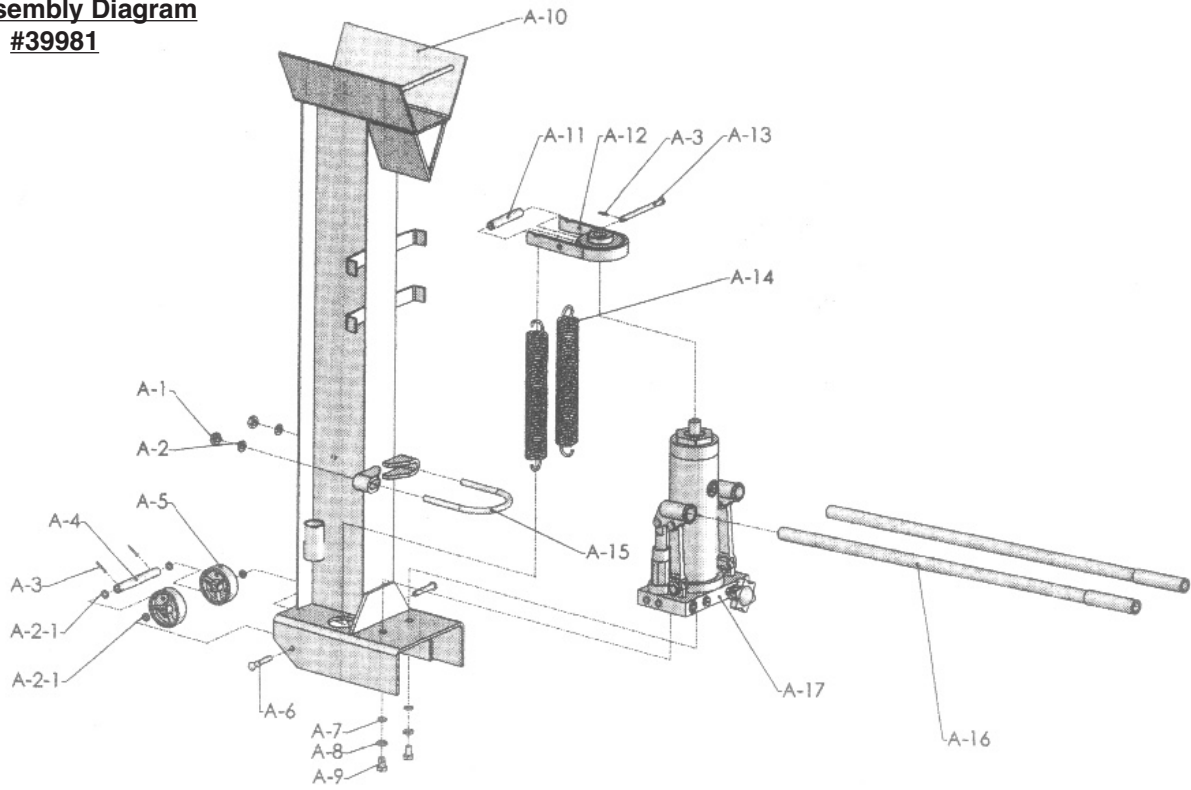
### UNPACK AND CHECK CONTENTS

When unpacking your Log Splitter, check to make sure the following parts are included. If any parts are missing or broken, please call **HARBOR FREIGHT TOOLS** at **1-800-444-3353**.

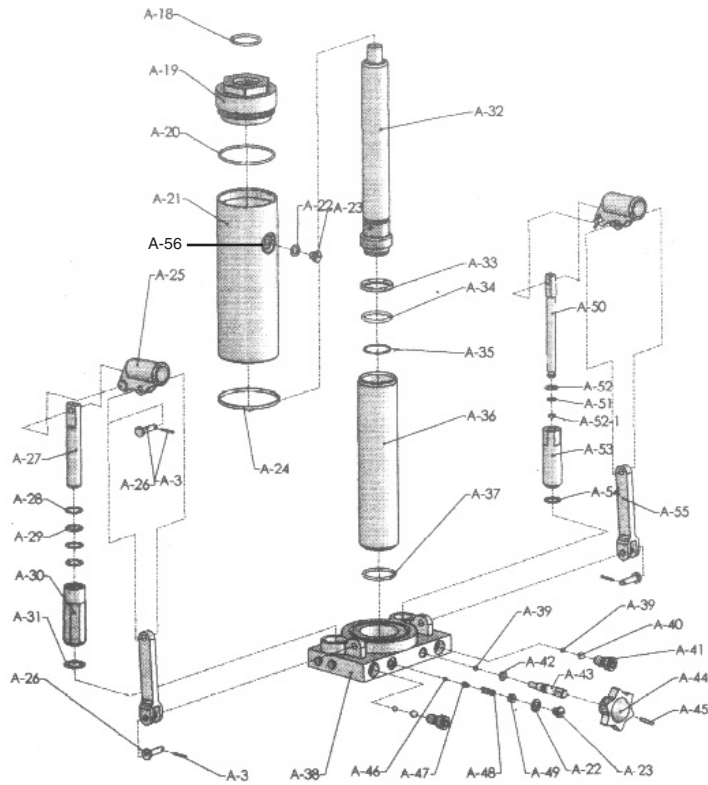
#### Parts List

<b>Part #</b>	<b>Description</b>	<b>Quantity</b>	<b>Part #</b>	<b>Description</b>	<b>Quantity</b>
A-1	Nut	2	A-29	O - Ring	2
A-2	Washer	2	A-30	Pump Body	1
A2-1	Washer	4	A-31	Washer	1
A-3	Split Pin	9	A-32	Piston Rod	1
A-4	Shaft	1	A-33	O-Ring Returner	1
A-5	Wheel	2	A-34	O-Ring	1
A-6	Pin	2	A-35	Retaining Ring	1
A-7	Washer	2	A-36	Cylinder	1
A-8	Spring Washer	2	A-37	O-Ring	1
A-9	Bolt	2	A-38	Valve Base	1
A-10	Frame	1	A-39	Ball	3
A-11	Bush	1	A-40	Ball	2
A-12	Top Plate	1	A-41	Bolt	2
A-13	Pin	1	A-42	O-Ring	1
A-14	Spring	2	A-43	Release Pin	1
A-15	U-Clamp	1	A-44	Release Screw	1
A-16	Handle	2	A-45	Pin	1
A-17	Power Unit Assy.	1	A-46	Ball	1
A-18	O-Ring	1	A-47	Retainer	1
A-19	Gland Nut	1	A-48	Spring	1
A-20	O-Ring	1	A-49	Regulate Bolt	1
A-21	Cistern	1	A-50	Pump Plunger	1
A-22	Rubber Washer	2	A-51	Washer	1
A-23	Hexagonal Bolts	2	A-52	O-Ring	1
A-24	Cistern Packing	1	A-52-1	O-Ring	1
A-25	Socket	2	A-53	Pump Body	1
A-26	Pin	6	A-54	Washer	1
A-27	Pump Plunger	1	A-55	Link	2
A-28	Washer	2	A-56	Oil Fill Plug	1

**Assembly Diagram  
#39981**



**Power Unit Assembly**



---

## LIMITED 90 DAY WARRANTY

---

Harbor Freight Tools Co. makes every effort to assure that its products meet high quality and durability standards, and warrants to the original purchaser that this product is free from defects in materials and workmanship for the period of 90 days from the date of purchase. This warranty does not apply to damage due directly or indirectly, to misuse, abuse, negligence or accidents, repairs or alterations outside our facilities, criminal activity, improper installation, normal wear and tear, or to lack of maintenance. We shall in no event be liable for death, injuries to persons or property, or for incidental, contingent, special or consequential damages arising from the use of our product. Some states do not allow the exclusion or limitation of incidental or consequential damages, so the above limitation of exclusion may not apply to you. THIS WARRANTY IS EXPRESSLY IN LIEU OF ALL OTHER WARRANTIES, EXPRESS OR IMPLIED, INCLUDING THE WARRANTIES OF MERCHANTABILITY AND FITNESS.

To take advantage of this warranty, the product or part must be returned to us with transportation charges prepaid. Proof of purchase date and an explanation of the complaint must accompany the merchandise. If our inspection verifies the defect, we will either repair or replace the product at our election or we may elect to refund the purchase price if we cannot readily and quickly provide you with a replacement. We will return repaired products at our expense, but if we determine there is no defect, or that the defect resulted from causes not within the scope of our warranty, then you must bear the cost of returning the product.

This warranty gives you specific legal rights and you may also have other rights which vary from state to state.

3491 Mission Oaks Blvd. • PO Box 6009 • Camarillo, CA 93011 • (800) 444-3353