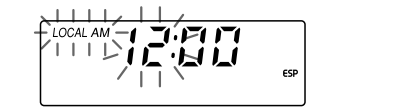


## Setting the Clock

When the batteries are first installed, “AM 12:00” flashes and “LOCAL” appears in the display. The clock is on the 12-hour system.

### Setting the LOCAL Time

- 1 Press **WORLD/LOCAL** to display “LOCAL”.
- 2 Hold down **CLOCK** until you hear a beep. “LOCAL” and the hour flashes.



- 3 Press **TUNE/SCAN TIME SET +** or **-** to set the hour. Press **+** to advance and **-** to go back. Hold down the button to change the time continuously.
- 4 Press **CLOCK** to enter the hour. A beep sounds and the minute flashes.

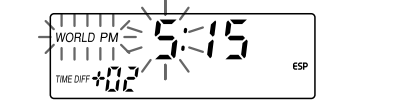


- 5 Press **TUNE/SCAN TIME SET +** or **-** to set the minute, and then press **CLOCK**. Two beeps sound to confirm the setting. The clock starts to operate and “:” flashes.

### Setting the WORLD Time

The WOLRD time displays the time for a selected time area in the world.

- 1 Press **WORLD/LOCAL** to display “WORLD”. “TIME DIFF” and the time difference to your local time appears.
- 2 Press **CLOCK** until you hear a beep. “WORLD” and the hour flashes.



- 3 Press **TUNE/SCAN TIME SET +** or **-** to set the desired hour and press **CLOCK**. Press **+** to advance and **-** to go back. The time difference indication changes accordingly. Two beeps sound to confirm the setting. The clock starts to operate and “:” flashes.

#### Notes

- For WORLD time, only the hour can and need to be set.
- When you change the LOCAL time, the WORLD time will be adjusted accordingly based on the time difference setting.

## Adjusting the current time display to daylight saving time (summer time)

Press **D.S.T./SUMMER T.** “☀” appears in the display and the current time is adjusted to the daylight saving time.

### To cancel daylight saving time adjustment

Press **D.S.T./SUMMER T.** again.

#### Note

The daylight saving time setting is done separately for the LOCAL time and WORLD time.

## Changing AM Channel Step

The channel step of this unit is factory-set to 10 kHz. Switch the channel step when using the unit in areas with the 9 kHz frequency allocation system.

Area	Channel step
North and South American countries	10 kHz
Other countries	9 kHz

Hold down **■OFF•ALARM RESET** and **BAND** for about 5 seconds until you hear two beeps.

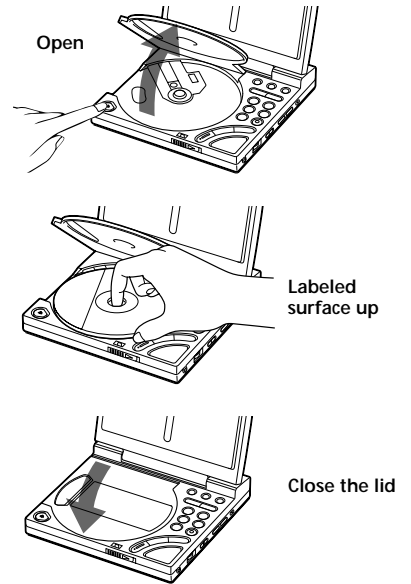
#### Note

The station presets are erased when the AM channel step is changed.

## Playing a CD

An 8 cm (3-inch) CD can be played without an adaptor.

- 1 Press **▲OPEN** to open the CD compartment lid and place a disc.



- 2 Press **CD ►II**. When the button is pressed, the display shows the total number of tracks and the running time of the CD. When a track is playing, the display shows the track number and the elapsed time of the track.
- 3 Adjust the volume using **VOLUME**.

#### Note

When you press **CD ►II**, it normally takes about 12 seconds before the CD starts playing. It may also take a few seconds after pressing **CD ►II** before the CD starts spinning, but this is not a malfunction.

### Listening through the built-in speakers

The built-in speakers are located in the inner side of the main cover. Open the main cover when listening through the speakers.

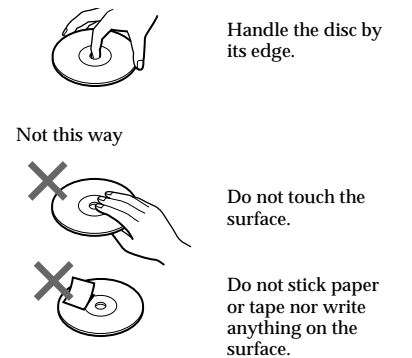
To	Press
Pause	CD ►II
Resume play after pause	CD ►II
Locate the beginning of the current track (AMS*)	◀◀ once**
Locate a previous track (AMS)	◀◀ repeatedly for the number of tracks to be skipped**
Locate the next track (AMS)	►► once**
Locate a succeeding track (AMS)	►► repeatedly for the number of tracks to be skipped**
Review	Hold down ◀◀**
Cue	Hold down ►►**
Stop play	■OFF•ALARM RESET

\* AMS = Automatic Music Sensor

\*\* Possible during both playback and pause.

### Handle compact discs...

...this way.

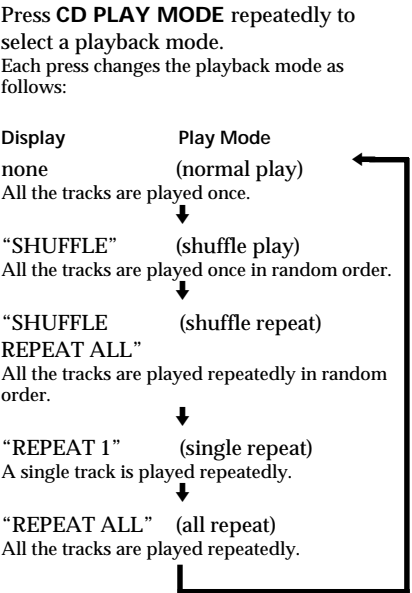


#### Notes

- Do not open the CD compartment lid during playback, as doing so may damage the disc.
- If you press **CD ►II** with no disc in the CD compartment, “00” will flash for a few seconds.

## Various Modes of CD Playback

You can play tracks repeatedly or in random order.



#### Notes

- When playing a CD in the Shuffle mode, pressing **◀◀** will not shift playback to the preceding track.
- The **CD PLAY MODE** button does not function when the main cover is closed.

## Preventing sound from skipping (ESP)

The ESP (Electronic Shock Protection) function prevents the sound from skipping by using a buffer memory that stores music data for about 10 seconds. Use this function when playing a CD in a car or during a walk.

#### Press ESP.

The “ESP” indication appears in the display. The ESP function is activated by factory preset. To deactivate the function, hold down **ESP** for two seconds until the “ESP” indication disappears in the display.

#### Notes

- A strong shock may cause playback to stop even with the ESP function on.
- The sound may skip or become noisy when:
  - listening to a dirty or scratched CD,
  - listening to an audio test CD or,
  - the player receives continuous shock.
- The sound will drop for a while when ESP is switched on or off during play.
- ESP cannot be switched on or off when the main cover is closed.

## Playing the Radio

### Manual Tuning

- 1 Press **RADIO•SLEEP** to turn on the radio.
- 2 Press **BAND** repeatedly to select the desired band. FM1 and FM2 are differentiated only for Preset tuning. For Manual or Auto Station Scan tuning of FM stations, select either band.
- 3 Tune in to a station by pressing **TUNE/SCAN TIME SET +** or **-**. Press **+** for a higher frequency and **-** for a lower frequency. To change the frequency rapidly, hold down the button for more than 2 seconds. Be sure “SCAN” does not appear in the display. The frequency indication will stop when you release the button.
- 4 Adjust the volume using **VOLUME**.

### Listening through the built-in speakers

The built-in speakers are located in the inner side of the main cover. Open the main cover to listen through the speakers.

#### Note

When a headphone set is connected to the (headphones) jack, there will be no sound from the speakers.

### To turn off the radio

Press **■OFF•ALARM RESET**.

**To improve radio reception**  
**FM:** Extend and adjust the angle of the telescopic antenna.  
**AM:** Rotate the unit horizontally for optimum reception. A ferrite bar is built in to the unit. Avoid operating the unit on a steel desk or metal surface.

## Auto Station Scan Tuning

The unit automatically scans the selected waveband and stops at reception.

- 1 Press **RADIO•SLEEP** to turn on the radio.
- 2 Press **BAND** repeatedly to select the desired band.
- 3 Hold down **TUNE/SCAN TIME SET +** or **-** until “SCAN” flashes in the display, then release the button. Scanning starts. Scanning is paused when a station is received. The station is tuned in for a few seconds, then the unit resumes scanning.
- 4 Press **TUNE/SCAN TIME SET +** or **-** while your desired station is tuned in. “SCAN” disappears in the display and scanning stops to receive your desired station continuously.
- 5 Adjust the volume using **VOLUME**.

### Preset Tuning

You can preset up to 15 stations (5 stations each for FM1, FM2 and AM). Once a station is preset, it can be recalled with just a press of the respective preset button.

**Presetting the Station**  
Example: To preset 87.50 MHz on FM2 onto preset button 2.

- 1 Tune in to the desired station (87.50 MHz on FM2, in this case) by Manual tuning or Auto Station Scan tuning.
- 2 Hold down the desired preset button (2, in this case) until you hear two short beeps. “PRESET” flashes while the station is being stored, and the preset number is displayed.



### To change the preset station

Tune in to the station to be preset and hold down the desired preset button until you hear two short beeps. The station previously assigned to the button will be erased.

### Tuning in to a preset station

- 1 Press **RADIO•SLEEP** to turn on the radio.
- 2 Press **BAND** to choose a band.
- 3 Press the preset button where the desired station is stored.
- 4 Adjust the volume using **VOLUME**.

## Sleep Timer

Enjoy falling asleep to the radio with the sleep timer. The radio turns off automatically after the selected duration.

- 1 Press **RADIO•SLEEP** to turn on the radio.
- 2 Press **RADIO•SLEEP** again. “SLEEP” and the sleep countdown duration appear in the display.
- 3 Press **RADIO•SLEEP** repeatedly until the desired duration appears in the display. Each press changes the sleep countdown duration in the following order:  
90 → 60 → 30 → 15  
(none)

The sleep timer starts counting down the remaining number of minutes until the radio turns off.

- To change the timer duration after the timer function is activated, press **RADIO•SLEEP** repeatedly until the desired duration appears.
- To switch off the power during countdown, press **SNOOZE•SLEEP OFF/LIGHT**.

## Setting the Alarm

The unit comes with 3 alarm modes — CD, radio and buzzer. Before setting the alarm, make sure to set the clock (see “Setting the Clock”).

### Setting the Alarm Time

- 1 Hold down **ALARM TIME** until you hear a short beep. The alarm mode indications and the hour of the alarm time flashes.
- 2 Press **TUNE/SCAN TIME SET +** or **-** to select the desired hour, then press **ALARM TIME**. A beep sounds and the minute flashes.



- 3 Press **TUNE/SCAN TIME SET +** or **-** to select the desired minute, then press **ALARM TIME**. Two short beeps sound to confirm the setting.
- 4 Press **ALARM MODE** repeatedly to display the indication for the desired alarm mode. Each press of **ALARM MODE** changes the mode in the following order:  
CD → RADIO → BUZZER  
(none)

The alarm you chose will sound at the alarm time.

### To check the alarm time

Press **ALARM TIME**.

#### Notes

- The radio or the buzzer alarm will sound for about 60 minutes before stopping automatically.
- The loudness of the buzzer is fixed and cannot be adjusted with **VOLUME**.
- The CD alarm will stop automatically. It will stop in about 60 minutes under the SHUFFLE REPEAT ALL, REPEAT 1 or the REPEAT ALL mode. To continue playback of the CD after the alarm has stopped, press **CD ►II**.

## To Stop the Alarm

Press **■OFF•ALARM RESET**. The alarm will come on at the same time the next day.

## To Cancel the Alarm

Press **ALARM MODE** repeatedly until there is no alarm mode indication in the display.

## To Doze for a Few More Minutes (Snooze)

Press **SNOOZE•SLEEP OFF/LIGHT**. The alarm turns off, but will be activated automatically after about 8 minutes.

- The alarm mode indication flashes in the display while the Snooze function is in effect.

## To Set the Wake-up Track for CD Alarm

For the CD alarm, you can choose a track on the CD to wake up to (the Wake-up track).

- 1 Select the CD alarm mode (see “Selecting the Alarm Mode”).
- 2 Press **ALARM TRACK/STATION** until you hear a beep. “WAKE UP” flashes in the display.



- 3 Press **TUNE/SCAN TIME SET +** or **-** to select the desired track number.
- 4 Press **ALARM TRACK/STATION** again. Two short beeps sound to confirm the setting. The track you chose will sound at the time set.

#### Notes

- If the playback mode is set to SHUFFLE or SHUFFLE REPEAT, the CD alarm will disregard the Wake-up track designation.
- The selected Wake-up track number remains even when the CD is changed.
- If the alarm mode is set to the CD alarm but there is no CD in the player, the buzzer alarm will sound in its place at the time set.

## To Set the Wake-up Station for Radio Alarm

For the radio alarm, you can choose a station from the preset memory to wake up to (the Wake-up station).

- 1 Select the radio alarm mode (see “Selecting the Alarm Mode”).
- 2 Press **ALARM TRACK/STATION** until you hear a beep. “WAKE UP” flashes in the display.



- 3 Press **TUNE/SCAN TIME SET +** or **-** repeatedly to select a preset station.
- 4 Press **ALARM TRACK/STATION** again. Two short beeps sound to confirm the setting. The preset station you chose will sound at the time set.

#### Note

If you did not choose a Wake-up station (i.e., the WAKE UP preset indication is “-.-”), the station last received will be played.

## Other Useful Functions

## Emphasizing bass

Set **MEGA BASS** to **ON**. Switch it off if the sound becomes distorted.

## Lighting the display

Press **SNOOZE•SLEEP OFF/LIGHT**. The light comes on for about 10 seconds. When the unit is operating on house current, the display is lit at all times.