

EUREKA

HotShot™

Household Type

Hand Steamer Owner's Guide 350 Series



INDEX

Important Safeguards	2
Service Information	5
Use & Assembly	6-9
Maintaining	9
Problem Solving	12
Customer Order Form	13
Warranty	15-16

For location of nearest Eureka
Warranty Station or Service
Information, call 1-800-282-2886.

IMPORTANT

**Do not return this
product to the store.**

**For assembly problems or
questions contact:** Eureka's
Customer Service Division
toll free at 1-800-282-2886*, 7
a.m. to 8 p.m., Central Standard
Time, Monday through Saturday.

**For replacement of broken or
missing items** to be shipped
direct to you, call 1-800-438-
7352*, 8 a.m. to 4:45 p.m.,
Central Standard Time,
Monday through Friday.

***En Mexico llame al 254 23 52**

www.eureka.com



IMPORTANT SAFEGUARDS

When using an electrical appliance, basic precautions should always be followed, including the following:

READ ALL INSTRUCTIONS BEFORE USING THIS STEAM CLEANER.

WARNING

To reduce the risk of fire, electric shock, or injury:

- 1 Do not use outdoors.
- 2 Do not leave steam cleaner when plugged in. Unplug the electrical cord when not in use and before servicing.
- 3 Do not allow to be used as a toy. Close attention is necessary when used near children, pets and plants.
- 4 Use only as described in this manual. Use only manufacturer's recommended accessories.
- 5 Do not use with damaged cord or plug. If steam cleaner is not working as it should, has been dropped, damaged, left outdoors, or dropped into water, return it to a service center before using.
- 6 Do not pull or carry by cord, use cord as a handle, close a door on cord, or pull cord around sharp edges or corners. Keep cord away from heated surfaces.
- 7 Do not use extension cords or outlets with inadequate current carrying capacity.
- 8 Do not unplug by pulling on cord. To unplug, grasp the plug, not the cord.
- 9 Do not handle plug or steam cleaner with wet hands or operate without shoes.
- 10 Do not put any object into openings. Do not use with any opening blocked.
- 11 Store your steam cleaner indoors in a cool, dry area.
- 12 Keep your work area well lighted.
- 13 **Never turn the appliance over or on its side when using steam. Never direct steam towards people, animals, plants, and equipment with electrical components.**
- 14 Do not immerse the steam cleaner into water or other liquids. Always unplug the power cord from the electrical socket when filling the steam cleaner.
- 15 **Never put descaling, aromatic, alcoholic or detergent products into the steam cleaner, as this may damage it or make it unsafe for use.**
- 16  Before filling, proceed as follows: 1) unplug the power supply, 2) relieve pressure by depressing steam delivery button, 3) allow steamer to cool down for three minutes, 4) relieve any built up pressure again by depressing steam delivery button, 5) slowly unscrew safety cap (see page 6, item 5) and wait 5 seconds before removing.
- 17  **Metal tips on nozzles will get hot during use.** Do not touch hot surfaces. Allow the attachments to cool down before replacing them while the appliance is being used.
- 18 This appliance is intended for household use only.
- 19 Any repair work, including the replacement of the power cord must only be carried out by an Authorized Eureka Service technician because a special tool is required. Call for nearest service location 1-800-282-2886.

SAVE THESE INSTRUCTIONS

CONSEILS DE SÉCURITÉ

Lors de l'utilisation d'un appareil électrique, quelques précautions élémentaires doivent être observées, incluant les suivantes:

LISEZ TOUTES LES INSTRUCTIONS AVANT D'UTILISER VOTRE NETTOYEUR À VAPEUR.

AVERTISSEMENT

Pour réduire le risque de feu, de choc électrique ou de blessure:

- 1 Ne pas utiliser le nettoyeur à vapeur à l'extérieur.
- 2 Ne pas laisser le nettoyeur à vapeur seul quand il est branché. Débrancher le nettoyeur à vapeur lorsque vous ne l'utilisez pas ou avant l'entretien.
- 3 Ne pas permettre que le nettoyeur à vapeur soit utilisé comme un jouet. Une attention particulière est nécessaire lorsqu'il est utilisé par ou près d'un enfant, animales ou plantes.
- 4 Suivre strictement les recommandations d'utilisation de ce manuel. Utiliser uniquement les accessoires recommandés par le fabricant.
- 5 Ne jamais utiliser le nettoyeur à vapeur si le cordon ou la fiche sont endommagés. Si le nettoyeur à vapeur ne fonctionne pas comme il le devrait, s'il a été échappé, s'il est endommagé, s'il a été laissé à l'extérieur ou échappé dans de l'eau, le retourner à un centre de service avant de l'utiliser.
- 6 Ne pas tirer ou transporter le nettoyeur à vapeur par le cordon. Ne pas utiliser le cordon en guise de poignée. Ne pas fermer une porte sur le cordon ou tirer le cordon sur des bordures ou des coins pointus. Tenir le cordon à distance des surfaces chauffantes.
- 7 Ne pas utiliser des cordons de rallonge ou des prises qui n'ont pas une capacité suffisante pour transporter le courant.
- 8 Ne pas débrancher le nettoyeur à vapeur en tirant sur le cordon. Pour débrancher saisir la fiche et non pas le cordon.
- 9 Ne pas manipuler la fiche ou le nettoyeur à vapeur avec les mains mouillées ou faire fonctionner pieds nus.
- 10 Ne rien insérer dans les ouvertures. Ne pas utiliser si des ouvertures sont bloquées.
- 11 Entreposer votre nettoyeur à vapeur à l'intérieur, dans un endroit propre et sec.
- 12 Maintenir un bon éclairage à l'endroit où vous travaillez.
- 13 **Ne jamais retourner l'appareil, ou le mettre sur son côté lors de l'emploi de la vapeur. Ne jamais diriger la vapeur vers une personne, un animal ou une plante et tous les appareils comportant des pièces électriques.**
- 14 Ne pas immerger le nettoyeur à vapeur dans de l'eau, ou d'autres liquides. Toujours débrancher le cordon électrique de la prise lors de remplissage du nettoyeur.
- 15 **Ne jamais mettre des produits détartrants, aromatiques, alcooliques ou détergents dans le nettoyeur à vapeur. Ceux-ci peuvent l'abîmer ou le rendre dangereux à utiliser.**
- 16  Avant de remplir, faites le suivant : 1) débranchez le cordon électrique, 2) réduisez la tension en appuyant sur le bouton qui règle l'arrivée de la vapeur, 3) attendez 3 minutes pour que l'appareil se refroidisse, 4) appuyez de nouveau sur le bouton qui règle l'arrivée de la vapeur afin d'être sûr que toute tension accumulée se dissipe, 5) dévissez lentement le casque de protection (voir l'article 5 à la page 6) et attendez 5 secondes avant de l'enlever.
- 17  La pointe en métal de la lance chauffe pendant l'emploi. Ne touchez pas les surfaces chaudes.
- 18 Permettez aux accessoires de se refroidir avant de les remettre pendant l'emploi de l'appareil.
- 19 Cet appareil est conçu uniquement pour l'usage ménager. Tout travail d'entretien, y compris le remplacement du cordon électrique doit être fait par un technicien Eureka autorisé parce qu'un outil spécial est nécessaire.

CONSERVEZ CES INSTRUCTIONS

GROUNDING INSTRUCTIONS

This appliance must be grounded. If it should malfunction or breakdown, grounding provides a path of least resistance for electric current to reduce the risk of electric shock. This appliance is equipped with a cord having an equipment-grounding conductor and grounding plug. The plug must be inserted into an appropriate outlet that is properly installed and grounded in accordance with all local codes and ordinances.

Instructions Visant la Mise à la Terre

Cet appareil doit être mis à la terre. En cas de défaillance ou de panne éventuelles, la mise à la terre fournit au courant un chemin de moindre résistance qui réduit le risque de choc électrique. Cet appareil est pourvu d'un cordon muni d'un conducteur de terre et d'une fiche avec broche de terre. La fiche doit être branchée dans une prise appropriée correctement installée et mise à la terre conformément aux règlements et ordonnances municipaux.

DANGER

Improper connection of the equipment-grounding conductor can result in a risk of electric shock. Check with a qualified electrician or service person if you are in doubt as to whether the outlet is properly grounded. Do not modify the plug provided with the appliance - if it will not fit the outlet, have a proper outlet installed by a qualified electrician.

AVERTISSEMENT

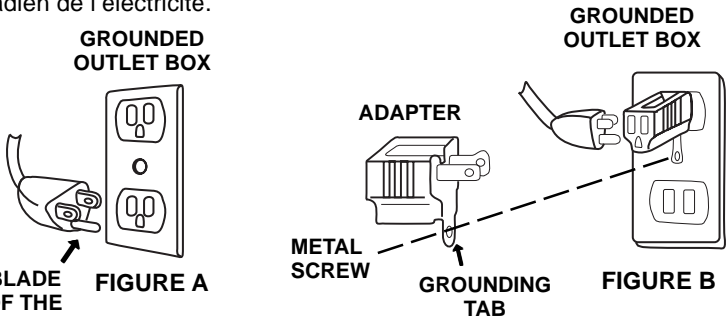
Un conducteur de terre mal raccordé peut entraîner un risque de choc électrique. Consulter un électricien ou un technicien d'entretien qualifié si vous n'êtes pas certain que la prise est correctement mise à la terre. Ne pas modifier la fiche fournie avec l'appareil - si elle ne peut être insérée dans la prise, faire installer une prise adéquate par un électricien qualifié.

This appliance is for use on a nominal 120 volt circuit and has a grounding plug that looks like the plug illustrated in Figure A. A temporary adapter which looks like the adapter illustrated in Figure B may be used to connect this plug to a two-pole receptacle, as shown, if a properly grounded outlet is not available. The temporary adapter should be used only until a properly grounded outlet, Figure A, can be installed by a qualified electrician. The green colored rigid ear, lug, or the like extending from the adapter must be connected to a permanent ground such as a properly grounded outlet box cover. Whenever the adapter is used, it must be held in place by a metal screw.

NOTE: In Canada, the use of a temporary adapter is not permitted by the Canadian Electrical Code.

Cet appareil est destiné à un circuit de 120 V et est muni d'une fiche de mise à la terre semblable à celle illustrée par le Figure A. S'assurer que l'appareil est branché à une prise de courant ayant la même configuration que la fiche. Aucun adaptateur ne devrait être utilisé avec cet appareil.

Note: Au Canada, l'utilisation d'un adaptateur temporaire n'est pas autorisée par le Code canadien de l'électricité.



GENERAL INFORMATION

The steamer is designed as a complete change from old methods of traditional cleaning. This appliance is designed as a multi-purpose cleaner with a variety of applications.

Service Information

The instructions in this booklet serve as a guide to routine maintenance. For additional service information telephone our toll free number for the nearest Eureka Authorized Warranty Station. **You should know the model and type numbers when you call:**

USA: 1-800-282-2886
Mexico: 254 23 52
Canada: 1-800-282-2886

If you prefer, you can write to The Eureka Company, Service Division, 807 North Main Street, Bloomington, Illinois 61701, USA. In Canada write to The Eureka Company, 866 Langs Drive, Cambridge, Ontario N3H 2N7. Refer to The Eureka Warranty for complete service information.

Rating Plate

The model and type are indicated on the rating plate located on the bottom of the cleaner. For prompt and complete service information, always refer to these numbers when inquiring about service.

MODEL	TYPE
WATTS	HERTZ
SERVICE INFORMATION: 1-800-282-2886	
THE EUREKA COMPANY	
BLOOMINGTON, ILLINOIS 61701	

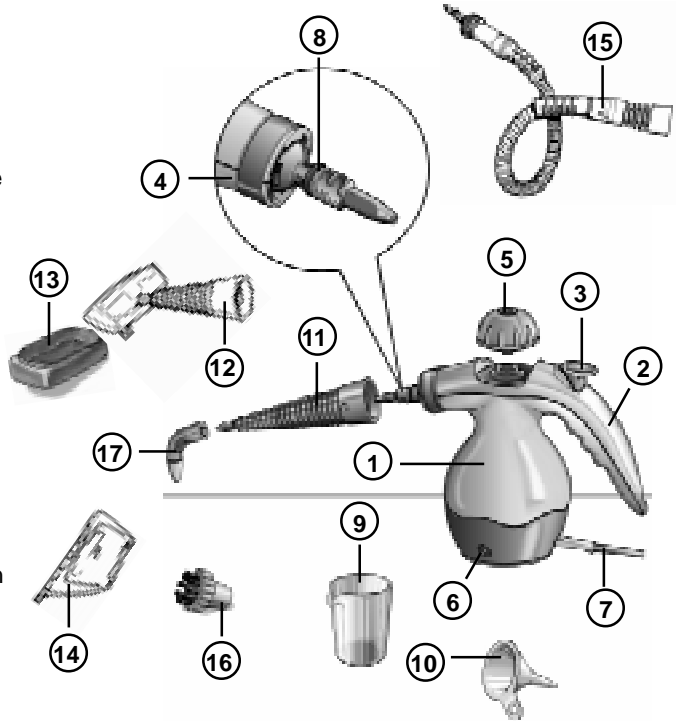
Model & Type _____

Description of the HOT SHOT™ hand held steamer

1. Body
2. Handle
3. Steam Delivery Button
4. Articulated Nozzle
5. Safety Cap
6. Power On Light
7. Electrical Cord
8. Rubber Gasket

ACCESSORIES

9. Measuring Cup
10. Funnel
11. Straight Nozzle
12. Fabric Tool
13. Cloth for Fabric Tool
14. Window Cleaner
15. Flexible Extension Hose
16. Scrub Brush
17. Angled Nozzle



Main Features of the HOT SHOT™ hand held steamer

Thank you for having chosen our product and allow us to congratulate you for having purchased the Eureka Hot Shot hand held steamer.

The Eureka Hot Shot hand held steamer achieves a high degree of hygienic and degreasing power on many surfaces. It turns water into steam in just a few minutes, so when contact is made with surfaces dirt and grime is removed.

Since the Eureka Hot Shot hand held steamer uses the active power of steam without the use of detergents or soap, it is safe for the environment.

Some surfaces that can be cleaned with the Hot Shot hand held steamer are: upholstery, sealed grout, bathroom and kitchen tile, stove tops, removable exhaust filter over stoves, windows and mirrors.

The fabric tool may be used to steam wrinkles out of clothing, window coverings, etc.

CAUTION: Do not direct steam at the body.

Other Advantages of the Eureka Hot Shot hand held steamer

The Eureka Hot Shot hand held steamer can kill dust mites and some types of bacteria, such as salmonella and E-coli when used properly.

To disinfect a specific area, position the steamer over the area, not more than 1 inch away and slowly move across the surface. This allows the surface under the steamer to reach approximately 170°F. Use this procedure to disinfect surfaces in: the bathroom, food preparation areas, pillows and bedding, pet sleeping quarters, etc.

INSTRUCTIONS FOR USE

The Eureka Hot Shot™ hand held steamer is designed to thoroughly clean hard surfaces and upholstery that will withstand high heat. Do not use on soft plastics, unsealed wood, and cold glass.

WARNING: On surfaces that have been treated with wax or some no wax floors, the sheen may be removed by the heat and steam action. Do not use on unsealed wood. This could cause the woodgrain to rise.

It is therefore recommended that a sample cleansing be carried out on an isolated area of the surface to be cleaned. Also, check use and care instructions from the manufacturer on the object you want to clean.

HOW TO ASSEMBLE AND USE

Do not plug unit into an electrical outlet until Step 7.

WARNING: After every use, press steam delivery button until all pressure has been released before removing safety cap.

1. Unscrew the safety cap. (After first use, turn the appliance over in order to completely empty the boiler.)
2. Fill the measuring cup with water to the marked water line, once. Use the funnel to pour the water into the boiler. The boiler takes only one measuring cup of water at a time. (6 oz. maximum) **Do not overfill.**



NOTE: Never put descaling, aromatic, alcoholic or detergent products into the appliance, as this may damage it or make it unsafe for use.

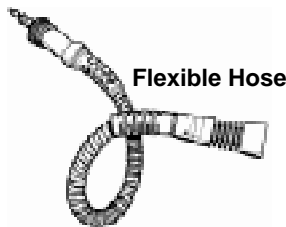
3. Screw the cap back onto the appliance.

Attachments

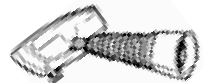
4. The straight nozzle, flexible hose and fabric tool all attach using the following directions.



Straight Nozzle

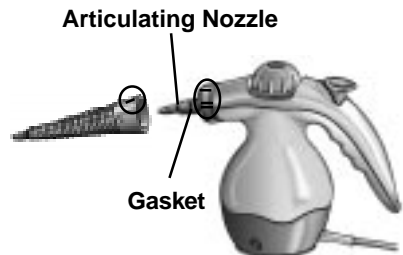


Flexible Hose



Fabric Tool

Align the single mark on the attachment to the single mark on the appliance. Push the attachment onto the articulating nozzle until it stops against the appliance's body. Turn in a clockwise direction until the single mark on the attachment is aligned with the double mark on the appliance. The attachment is now locked into position.



Articulating Nozzle

Gasket

HOW TO ASSEMBLE AND USE (continued)

The Hot Shot's articulating nozzle allows the steam to be directed as desired. To use the articulating nozzle, align the single marks on the attachment and appliance, push the attachment onto the articulating nozzle until it covers the round gasket (See page 7). Now turn clockwise until the single mark on the attachment is aligned with the double mark on the appliance. Now you can direct the steam as desired.

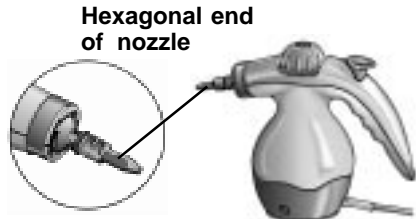


5. To attach the scrub brush and angled nozzle.



Scrub Brush

Angled Nozzle



Both of these attachments can be applied to the articulated nozzle (on appliance) straight nozzle, and the flexible extension hose.

Decide on your desired angle, then push the attachment onto the hexagonal end of the nozzle.

6. To attach the window cleaning tool.

CAUTION: Do not use the window cleaning tool on cold glass. It may break the glass.

First attach the fabric tool to either the appliance or the flexible extension hose. Remove the cloth from the fabric tool. There are two open tabs on the back edge of the fabric tool and there are two hinges on the back edge of the window cleaning tool. Place the hinges into the open tabs, then swing the window cleaning tool up against the bottom of the fabric tool until the two pieces click together. To remove the window cleaning tool from the fabric tool, just push your thumb against the fastener on the window cleaning tool, they will separate.

Window Cleaning Tool

Fabric Tool



Hinges



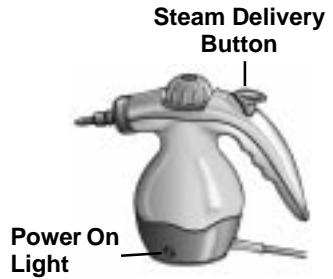
Tabs



How to start the Hot Shot

7. Plug the appliance into an electrical outlet.

The power on light will come on. Steam will be ready after about 3 to 4 minutes. Do not leave the appliance unattended during the waiting period. Press steam delivery button to release steam.



As soon as the Hot Shot emits steam, begin using it, passing slowly over the surfaces to be cleaned. This is the ideal method for thoroughly cleaning your surfaces. To disinfect specific areas, leave the Hot Shot over the spot, no more than 1 inch and slowly move across the surface.

WARNING: Never turn the hand held steamer over when using steamer, or direct steam at any person, animal, or plant.

How to refill the Hot Shot when it is out of steam.

8. Unplug the appliance. **Press steam delivery button until all pressure has been released. Wait for about 3 minutes** before carefully unscrewing the safety cap. Turn slowly a half turn and wait for the hissing noise created by residual steam to stop. Unscrew the cap completely and allow to cool. Slowly pour one measuring cup (included) into the boiler using the funnel, (included). (6 oz. maximum) **Do not overfill.** Screw the safety cap back on the appliance. Plug the appliance into electrical outlet and steam will start to be produced as before.

WARNING: This unit is under pressure. After every use, press steam delivery button until all pressure has been released before removing safety cap.

Cleaning and Maintenance

NOTE: The appliance must be unplugged from the electrical outlet and allowed to cool down before all cleaning and maintenance tasks.

9. Let the appliance cool down completely before cleaning it or putting it away.
10. After each use empty any remaining water from the boiler.
11. Store in a dry, cool place.
12. In order to guarantee perfect functioning over a long period of time, the boiler needs to be rinsed out with water once a month to eliminate any accumulated calcium deposits. **Do not use vinegar or other descaling substances.** Put in one measure of water, replace the safety cap and shake to loosen any accumulated deposits. Remove safety cap and immediately empty water into a sink. **CAUTION: Do not immerse the appliance in water.**

Suggested Uses for Attachments



Scrub Brush



Stovetops, countertops, sealed grout, inside trash receptacles.



Fabric Tool



Steaming clothes, upholstery, window coverings.



Window Cleaner



Windows, mirrors, glass doors. **Do not use on cold windows or glass. It may break.**



Straight Nozzle



Edging, window sills, ledges, tile, mantles.



Angled Nozzle

Difficult to reach areas, toilet bowls, window sills.



Flexible Hose

Areas requiring additional reach. This attachment can be used with all the other tools.

PROBLEM SOLVING

NOTE: Unplug the electrical cord before servicing.

PROBLEM	CAUSE	SOLUTION
Appliance won't start	<input checked="" type="checkbox"/> Electric plug <input checked="" type="checkbox"/> No water in tank	<input type="checkbox"/> Push plug securely into outlet. Verify power on light is on. <input type="checkbox"/> Try another outlet. <input type="checkbox"/> Check circuit breaker. <input type="checkbox"/> Check the tank for water.
Appliance won't make steam	<input checked="" type="checkbox"/> No water in tank	<input type="checkbox"/> Check the tank for water.
Appliance spits water out of nozzle	<input checked="" type="checkbox"/> Too much water in tank. Do not overfill. <input checked="" type="checkbox"/> Unit positioned upside down. <input checked="" type="checkbox"/> Not fully preheated.	<input type="checkbox"/> Check the water level in the tank. <input type="checkbox"/> Use in upright position. <input type="checkbox"/> Allow more time for water to heat up.
Water boils out of fill spout when adding water.	<input checked="" type="checkbox"/> Water tank too hot.	<input type="checkbox"/> Allow more time for cooling. <input type="checkbox"/> Add water slowly. <input type="checkbox"/> Use special funnel provided.
Accessories will not stay on.	<input checked="" type="checkbox"/> Not properly installed.	<input type="checkbox"/> Check for proper assembly. <input type="checkbox"/> Review this guide for assembly instructions.
General questions	<input checked="" type="checkbox"/> Assembly or related accessories	<input type="checkbox"/> Call 1-800-438-7352 between 8:00 AM–4:45 PM Monday through Friday, central standard time. Know the Model and Type numbers when you call.

The Eureka Company
 P.O. Box 2799
 Bloomington, IL 61702-2799

ORDER FORM

(Not applicable in Canada)

S O L D T O

Name _____

Address (street address needed for UPS) _____

City _____ State _____ Zip _____

Telephone (Day) _____ (Eve) _____ (Fax) _____

S H I P T O

Name _____

Address (street address needed for UPS) _____

City _____ State _____ Zip _____

Telephone (Day) _____ (Eve) _____ (Fax) _____

To Order

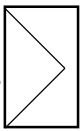


By Phone
 1-800-438-7352*

HOURS:
 Call between 8 a.m. and 4:45 p.m. central standard time

By FAX
 1-309-823-5789
 *En Mexico
 Llame 254 34 52

By Mail



Simply fill out this Order Form. Please be sure to include day and evening phone numbers.

www.eureka.com

Part No. 70395

Genuine Eureka Parts For Model 350

Model Number	Part No.	Qty.	Price (USD)	Total
Small Brush	61014		2.59	
Angular Nozzle	61015		1.99	
Cleaning Cloth	61016		2.49	
Upholstery Nozzle	61017		7.99	
Window Cleaner	61018		5.49	
Hose	61019		19.99	
Nozzle	61020		5.49	

To Answer Problems or Questions for U.S.A. and Canada call:

1-800-282-2886*

7 a.m. to 8 p.m. central standard time Monday through Saturday

Method of Payment (No C.O.D.s)

- Check or money order (payable to The Eureka Company). Do not send currency.
 - Charge to my Visa (13/16 digits) MasterCard (13 digits) American Express (15 digits)
- _____
- Acct. number _____
- Expiration date _____

Signature (Full name as shown on account) _____

Total (prices subject to change without notice)

Tax (add state and local taxes as required by law)

Postage and Handling Charge (Within the U.S.A.) **\$3.75**

TOTAL

THE EUREKA LIMITED WARRANTY

What This Warranty Covers

Your Eureka cleaner is warranted to be free from all defects in material and workmanship in normal household use for a period of one year. The warranty is granted only to the original purchaser and members of his or her immediate household. The warranty is subject to the following provisions.

What This Warranty Does Not Cover

- Parts of the cleaner that require replacement under normal use.
- Damages or malfunctions caused by negligence, abuse, or use not in accordance with the Owner's Guide.
- Defects or damages caused by unauthorized service or the use of other than Genuine Eureka parts.

What The Eureka Company Will Do

The Eureka Company will, at its option, repair or replace a defective cleaner or cleaner part that is covered by this warranty. As a matter of warranty policy, the Eureka Company will not refund the consumer's purchase price.

Warranty Registration

Please fill out and return the warranty registration card accompanying your cleaner.

Obtaining Warranty Service

To obtain warranty service you must return the defective cleaner or cleaner part along with proof of purchase to any Eureka Authorized Warranty Station. You will find the nearest location in the Yellow Pages, under "Vacuum Cleaners—Service and Repair." Be certain that the Warranty Station is "Eureka Authorized." For the location of the nearest Eureka Authorized Warranty Station or for service information, telephone toll free:

USA: 1-800-282-2886

Mexico: 254 23 52

Canada: 1-800-282-2886

If you prefer, you can write to: The Eureka Company, Service Division, 807 North Main Street, Bloomington, Illinois 61701, USA. In Canada write to The Eureka Company, 866 Langs Drive, Cambridge, Ontario N3H 2N7.

If it is necessary to ship the cleaner outside your community to obtain warranty repair, you must pay the shipping charges to the Eureka Authorized Warranty Station. Return shipping charges will be paid by the Warranty Station. When returning parts for repair, please include the model, type, and serial numbers from the data plate on the cleaner.

Further Limitations and Exclusions

Any warranty that may be implied in connection with your purchase or use of the cleaner, including any warranty of Merchantability or any warranty for Fitness For A Particular Purpose is limited to the duration of this warranty. Some states do not allow limitations on how long an implied warranty lasts, so the above limitations may not apply to you.

Your relief for the breach of this warranty is limited to the relief expressly provided above. In no event shall Eureka be liable for any consequential or incidental damages you may incur in connection with your purchase or use of the cleaner. Some states do not allow the exclusion or limitation of incidental or consequential damages, so the above limitation or exclusion may not apply to you.

This warranty gives you specific legal rights. You may also have other rights which vary by state.



Questions & Answers about Genuine Eureka Products

Q: Why should I use only Genuine Eureka paper bags, belts, and parts in my Eureka product?

A: Using Genuine Eureka Products, which are made to our exacting specifications and engineered with emphasis on quality, performance, and customer satisfaction, ensures the long life and cleaning efficiency of your Eureka product. Overall, this saves you money and helps to keep your home clean.

Q: How can I be sure I am using only Genuine Eureka products in my product?

A: Typically, packaged products can be identified by a "Genuine Eureka Product" symbol (see illustration above). For further identification assistance, you may call our toll-free number, 1-800-282-2886, for the location of a nearby Eureka Authorized Warranty Station.

Q: Are there any differences between "made to fit" or "imitation" and Genuine Eureka parts?

A: Yes, there are some very important differences in materials, quality, and reliability. Many customers have mistakenly purchased "imitation" parts while thinking they purchased genuine. Unfortunately, many of these customers discovered the differences after they experienced related difficulties.

For Genuine Eureka Value, Accept No Imitations!
THE EUREKA COMPANY

Household Warranty
abs 190

Bloomington, Illinois 61701