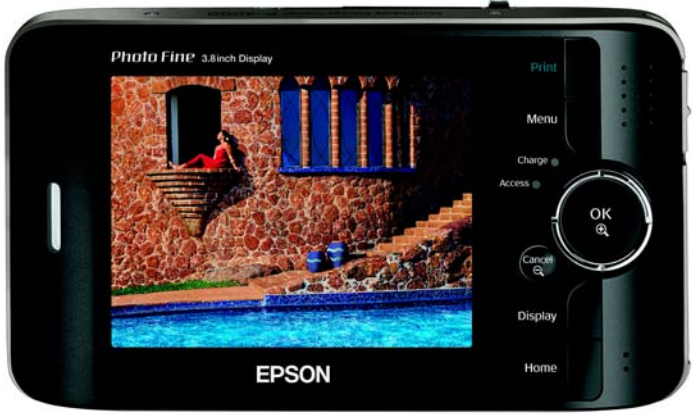


MULTIMEDIA STORAGE VIEWER

# EPSON® P-4000



# User's Guide

All rights reserved. No part of this publication may be reproduced, stored in a retrieval system, or transmitted in any form or by any means, electronic, mechanical, photocopying, recording, or otherwise, without the prior written permission of Seiko Epson Corporation. The information contained herein is designed only for use with this Epson product. Epson is not responsible for any use of this information as applied to other products.

Neither Seiko Epson Corporation nor its affiliates shall be liable to the purchaser of this product or third parties for damages, losses, costs, or expenses incurred by the purchaser or third parties as a result of accident, misuse, or abuse of this product or unauthorized modifications, repairs, or alterations to this product, or (excluding the U.S.) failure to strictly comply with Seiko Epson Corporation's operating and maintenance instructions.

Seiko Epson Corporation shall not be liable for any damages or problems arising from the use of any options or any consumable products other than those designated as Original Epson Products or Epson Approved Products by Seiko Epson Corporation.

Seiko Epson Corporation shall not be held liable for any damage resulting from electromagnetic interference that occurs from the use of any interface cables other than those designated as Epson Approved Products by Seiko Epson Corporation.

## **Trademarks**

Epson, Epson Stylus, and Print Image Framer are registered trademarks, and Photo Fine and P.I.F. are trademarks of Seiko Epson Corporation.

PictureMate is a registered trademark, and Epson Store is a service mark of Epson America, Inc.

*General Notice:* Other product names used herein are for identification purposes only and may be trademarks of their respective owners. Epson disclaims any and all rights in those marks.

# Contents

## **Introduction**

---

Features . . . . .	6
Using the Documentation . . . . .	6

## **Chapter 1 Getting Started**

---

P-4000 Parts . . . . .	7
P-4000 Lights and Buttons . . . . .	8
About the AC Adapter . . . . .	9
Installing the Battery . . . . .	9
Charging the Battery . . . . .	10
Removing the Battery . . . . .	11
Conserving Battery Power . . . . .	11
Using the Viewing Stand . . . . .	12
Turning On the Power . . . . .	12
Setting the Language, Date, and Time . . . . .	12
Locking the Buttons . . . . .	13
Using the Home Screen . . . . .	14
Turning Off the Power . . . . .	15

## **Chapter 2 Using Memory Cards**

---

Inserting and Removing Memory Cards . . . . .	16
Using the CompactFlash Card Slot . . . . .	17
Using the Secure Digital Card Slot . . . . .	18
Copying Files from a Memory Card . . . . .	19
Supported Image Formats . . . . .	19
Copying Your Files . . . . .	20
Browsing Files on a Memory Card . . . . .	21
Zooming an Image . . . . .	21
Displaying Information . . . . .	22
Displaying a Histogram . . . . .	22
Displaying Images as a Slide Show . . . . .	23

## **Chapter 3 Viewing and Playing Images, Audio, and Video**

---

Screen Icons . . . . .	24
Screen Icon Descriptions . . . . .	25

Displaying Images . . . . .	26
Zooming an Image . . . . .	27
Displaying Information . . . . .	27
Displaying Images as a Slide Show . . . . .	28
Rotating an Image . . . . .	28
Playing Audio and Videos . . . . .	29
Supported Video Formats . . . . .	29
Supported Audio Formats . . . . .	29
Playing Audio and Video Files . . . . .	30
Controlling Audio and Video Play . . . . .	30
Viewing Files on a TV . . . . .	31

## **Chapter 4 Managing Files**

---

Working with Albums . . . . .	32
Copying Files to an Album . . . . .	32
Creating a New Album . . . . .	34
Changing an Album's Name . . . . .	35
Deleting an Album . . . . .	35
Creating an Album Shortcut . . . . .	36
Deleting Files and Folders . . . . .	36
Protecting Files . . . . .	38
Creating an Album/Folder Thumbnail . . . . .	39
Using the Pop-Up Menu . . . . .	39
Settings Available in the Pop-Up Menu . . . . .	40
Settings Available in the Slide Show Pop-Up Menu . . . . .	41

Copying Files to and From Your Computer . . . . .	41
Connecting the P-4000 to Your Computer . . . . .	41
Disconnecting the P-4000 From Your Windows Computer . . . . .	42
Disconnecting the P-4000 From Your Macintosh . . . . .	43

## **Chapter 5 Direct Printing**

---

Connecting the P-4000 to a Printer . . . . .	44
Printing Your Photos . . . . .	45
Creating Print Orders . . . . .	47

## **Chapter 6 Customizing Settings**

---

Adjusting the LCD Brightness . . . . .	48
Adjusting the Volume and Beep Sounds . . . . .	48
Setting the Slide Show Options . . . . .	49
Changing the Copy Mode Setting . . . . .	50
Setting the Power Save Options . . . . .	50
Changing the View Mode Settings . . . . .	51
Selecting the Video Out Signal . . . . .	51
Setting the Date and Time . . . . .	51
Choosing the Language . . . . .	52
Checking the Remaining Storage Space . . . . .	52

## **Chapter 7 Maintenance and Troubleshooting**

---

Cleaning the P-4000 . . . . .	53
Error Messages . . . . .	53
Problems and Solutions . . . . .	54
Power Problems . . . . .	54
File Viewing Problems . . . . .	55
File Operation Problems . . . . .	56
Printing Problems . . . . .	57
Updating the Firmware and Printer Driver . . . . .	57
Resetting the P-4000 . . . . .	57
Where to Get Help . . . . .	58

## **Appendix A Notices**

---

Safety Instructions . . . . .	59
FCC Compliance Statement for United States Users . . . . .	64
WARNING . . . . .	64
Declaration of Conformity . . . . .	65
Standards and Approvals . . . . .	65
Epson P-4000 . . . . .	65
AC Adapter . . . . .	65
Battery (Model D111A) . . . . .	65

Specifications . . . . .	66
General . . . . .	66
Electrical . . . . .	66
Interface . . . . .	67
Battery . . . . .	67
AC Adapter . . . . .	67
Optional Accessory . . . . .	67

## **Index**

---

# Introduction

With the Epson® P-4000 multimedia storage viewer, you can enjoy photos, videos, and music wherever you go. Your images are displayed on Epson's exclusive 3.8-inch Photo Fine™ LCD in brilliant color and sharp detail.

## Features

- High-quality 3.8-inch LCD with Photo Fine technology
- Support for JPEG files
- Support for RAW files from select digital SLR cameras
- Support for MP3 and AAC audio
- Support for MPEG4 and Motion JPEG video
- 40GB hard drive
- Two slots for CompactFlash® and SD™ (Secure Digital) memory cards
- Hi-speed USB 2.0 interface for PC or Macintosh®
- Direct printing to select Epson printers
- Lithium-ion battery and AC adapter
- Video output to display pictures on a TV or projector

## Using the Documentation

This guide provides information and instructions for all the P-4000 features, including troubleshooting tips.

Make sure you read and follow all the “Safety Instructions” on page 59. Please follow these guidelines:

**Warning:**

Must be followed carefully to avoid bodily injury.

**Caution:**

Must be observed to avoid damage to your equipment.

**Note:**

Contains important information and useful tips on the operation of your product.

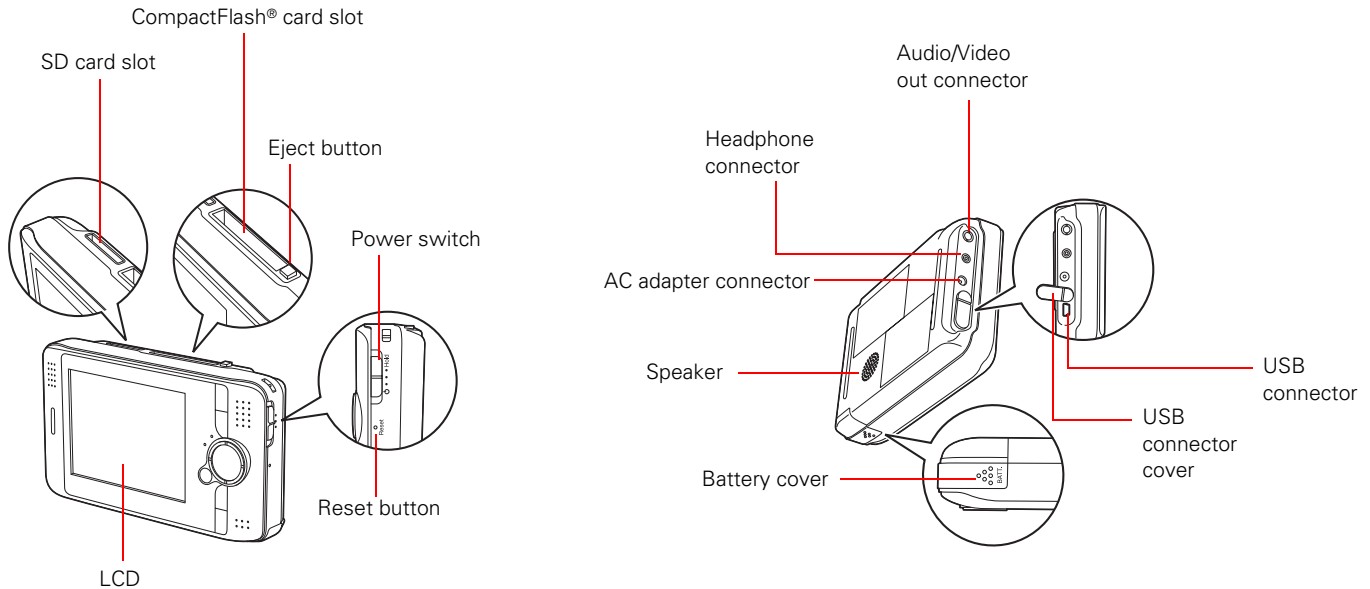
If you need assistance using your P-4000, see “Where to Get Help” on page 58.

Your package also includes a *P-4000 Basics* guide. Keep it with the P-4000 for handy reference when you travel.

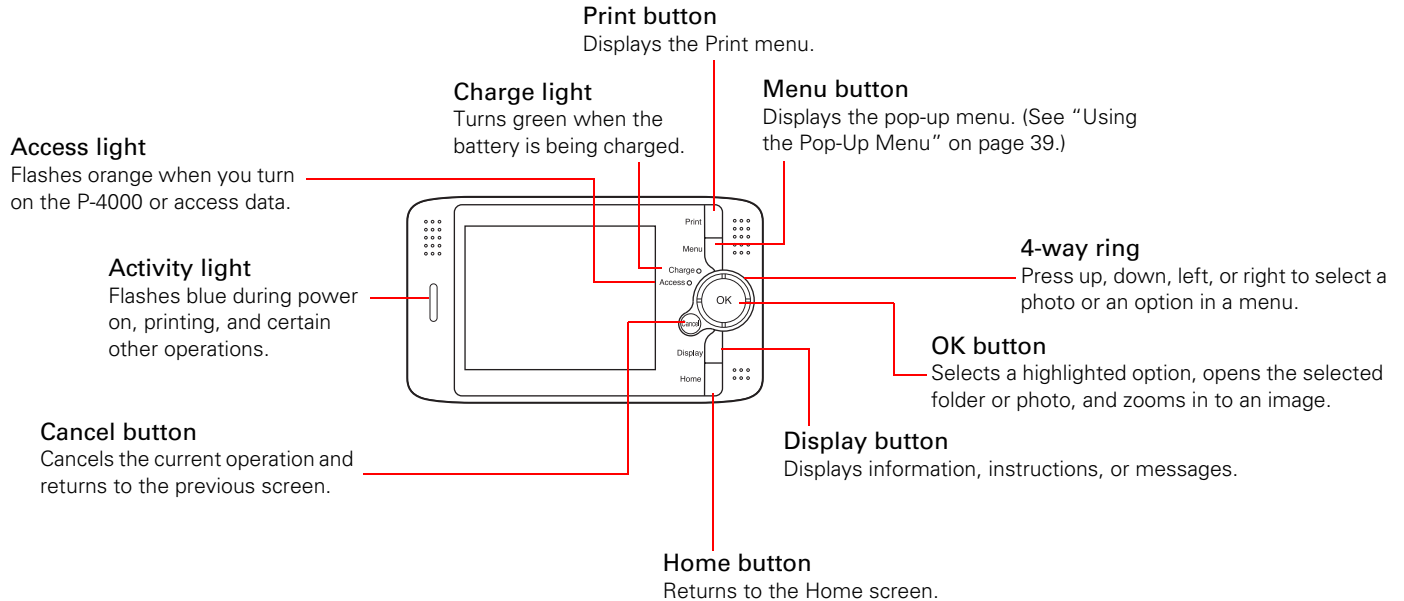
# Chapter 1

## Getting Started

### P-4000 Parts



# P-4000 Lights and Buttons





## About the AC Adapter

The P-4000 comes with an AC adapter. Use the adapter to charge the battery and when the P-4000 is connected to a computer or printer. You might also want to use it whenever possible to view videos or photos, so you can save battery power.

### Warning:

Use only the AC adapter provided, which is designed for the P-4000. Using another adapter could cause fire, electrical shock, or injury.

Do not use the AC power cord or the adapter for any purpose other than powering the P-4000.

To prevent fire or electric shock, do not cover the AC adapter with a blanket or similar covering.

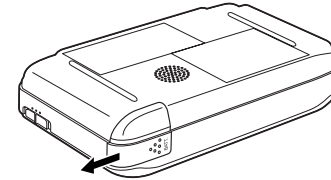
Do not connect the AC adapter when the battery is not installed; this can damage the P-4000.

Do not remove the AC adapter from this device during operations. You can, however, connect the adapter during operations.

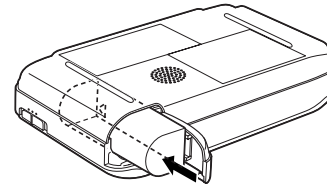
## Installing the Battery

The P-4000 comes with a Lithium-ion battery. Follow these steps to install it:

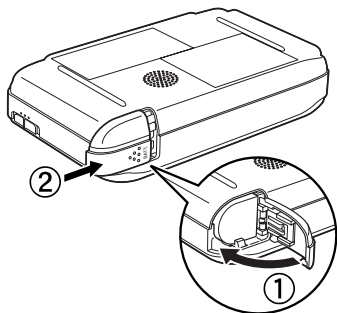
- 1 Turn the P-4000 upside down and slide the battery cover to the left to open it.



- 2 Insert the battery into the compartment as shown. Make sure the gold contacts on the battery go in first.



- 3** Close the battery cover and slide it to the right until it clicks.

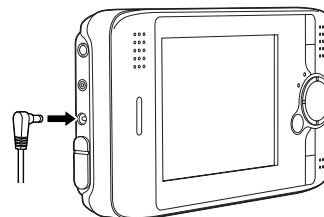


## Charging the Battery

After installing the battery, you need to charge it using the AC adapter. It takes about 3 hours to fully charge the battery when the P-4000 is off. It takes longer when the P-4000 is on.

The **Charge** light is green while the battery is being charged. When the battery is fully charged, the light turns off.

To charge the battery, connect the AC adapter as shown below. Connect the other end to the power cord, and plug it into an electrical outlet.



### Caution:

Do not connect the AC adapter when the battery is not installed; this can damage the P-4000.

The battery status is displayed in the top right corner of the LCD screen when the P-4000 is on.

	Battery is fully charged.
	Battery power is about half full.
	Battery power is low.
	Battery power is running out. The P-4000 will shut down automatically. Charge the battery using the AC adapter.
	Battery is charging.

**Note:**

The P-4000 stops charging if the battery becomes hot when operating it during charging. It will start charging again when it cools down.

## Removing the Battery

If you plan to store the P-4000 for an extended period of time, you should remove the battery.

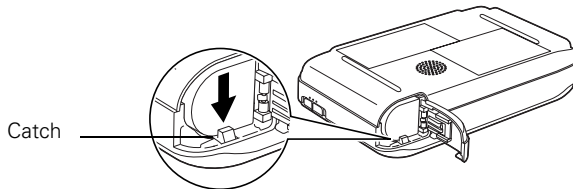
- 1 Make sure the P-4000 is turned off.

**Caution:**

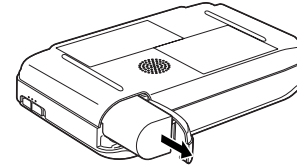
Remove the AC adapter if it is connected to the P-4000.

Never remove the battery while the P-4000 is turned on. Doing so may cause files to be lost or damaged.

- 2 Open the battery cover.
- 3 Push the catch down. The battery pops out.



- 4 Pull out the battery. Then close the battery cover.



## Conserving Battery Power

To conserve battery power and protect the LCD screen, the P-4000 has two power-saving features. If no button has been pressed and there has been no activity for 10 minutes, the backlight on the LCD screen is turned off. After 15 minutes, the power is turned off.

**Note:**

You can change the number of minutes for these settings; see "Setting the Power Save Options" on page 50.

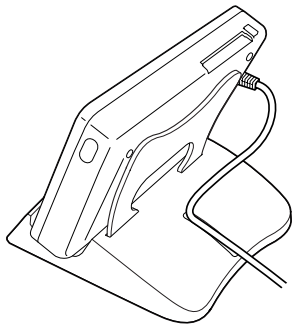
If the screen goes dark because the backlight is turned off, press any button on the P-4000 to resume operation. If the P-4000 has been powered off, you need to turn it back on with the power switch.

**Note:**

The power is also turned off if the P-4000 gets too hot. If this happens, let it cool before turning it back on.

## Using the Viewing Stand

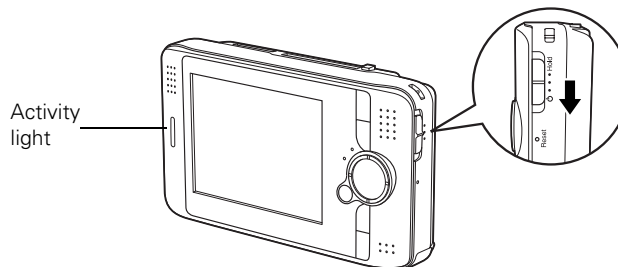
Assemble the viewing stand and place your P-4000 on the stand as shown.



This is especially convenient for watching videos and slide shows.

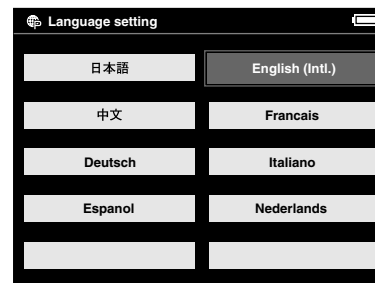
## Turning On the Power

To turn on the power, slide the power switch down as shown below, then release it. The blue activity light flashes.



## Setting the Language, Date, and Time

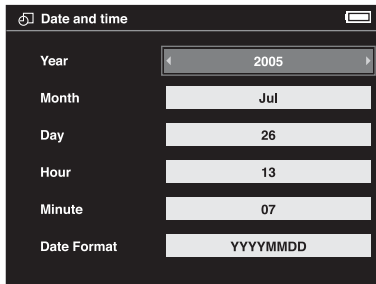
When you turn on the P-4000 the first time, you see the Language setting screen:



**Note:**

If you see the Home screen instead, the language has already been selected. To change it or check the date and time, select **Settings** on the Home screen. Then follow the instructions in “Setting the Date and Time” on page 51 or “Choosing the Language” on page 52.

- 1 Press the **OK** button to select **English**. You see a message about setting the date.
- 2 Press the **OK** button. You see the Date and time settings screen:



- 3 Press right or left on the 4-way ring to change the value for the selected item (such as the year).
- 4 To go to the next option (**Month** or **Day**, for example) press up or down. Then press right or left to change that setting.

- 5 After you finish making all settings, press the **OK** button. You see the Home screen. See “Using the Home Screen” on page 14 for details.

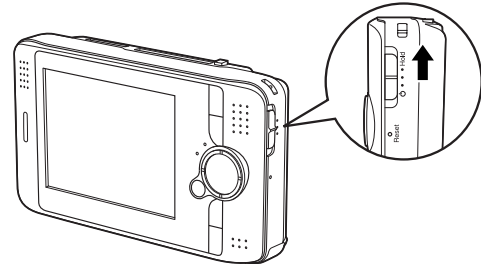
**Note:**

If you remove the battery, the date and time settings will be erased after about one day. The next time you turn on the P-4000, the date and time setting screen will be displayed.

## Locking the Buttons

You can lock the buttons on the P-4000. This allows you to place the P-4000 in a purse or backpack and use it with headphones without accidentally pressing the buttons.

To lock the buttons, slide the power switch to **HOLD**.

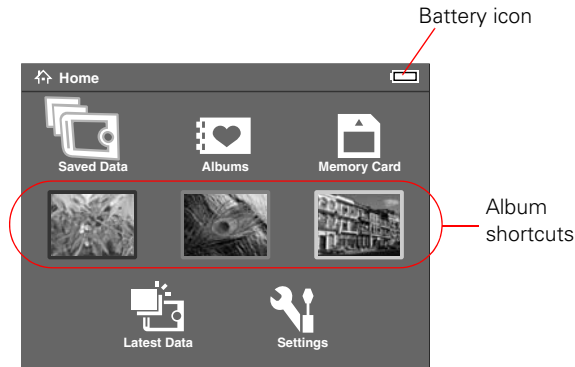


To unlock the buttons, slide the power switch back to the middle position.

## Using the Home Screen

Whenever you turn on the P-4000, the Home screen appears. All operations can be started from this screen.

You can return to the Home screen at any time by pressing the **Home** button.

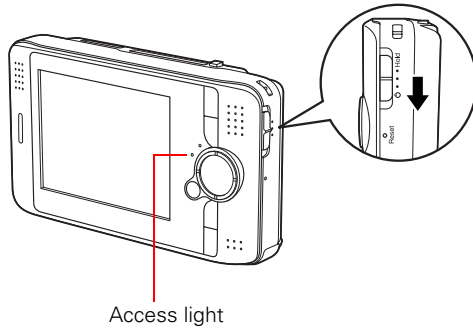


The following table summarizes the Home Screen functions.

<b>Battery icon</b>	Indicates the charge remaining in the battery. See "Charging the Battery" on page 10 for details.
<b>Saved Data</b>	Lets you select folders that include files saved on the P-4000.
<b>Albums</b>	Lets you select albums that you have created for your images, video, or audio files.
<b>Memory Card</b>	Lets you display or copy files from a memory card.
<b>Shortcut icons</b>	Let you go right to a favorite album. See "Creating an Album Shortcut" on page 36.
<b>Latest Data</b>	Lets you access the most recent files saved on the P-4000.
<b>Settings</b>	Lets you change the P-4000's settings. See Chapter 6, "Customizing Settings."

## Turning Off the Power

Before you turn off the P-4000, make sure the **Access** light is off. Then slide the power switch as shown below, and hold it down for a few seconds until the **Access** light flashes and the P-4000 turns off.



## Chapter 2

# Using Memory Cards

The P-4000 has two memory card slots: one for CompactFlash cards and one for Secure Digital cards.

This chapter explains how to insert and remove memory cards and how to display and copy files.

## Inserting and Removing Memory Cards

The P-4000 supports the following types of memory cards:

- CompactFlash Type I and Type II
- Microdrive™ (3.3 V only)
- SD (Secure Digital)
- MultiMedia card (MMC V 2.1 or later), up to 512MB

If you have a CompactFlash adapter, you can also use the following types of memory cards:

- Memory Stick®
- SmartMedia™ (3.3 V only)
- xD-Picture card™

### Caution:

Make sure you follow all instructions included with your memory card.

Never remove a memory card, or shake or drop the P-4000 while the **Access** light is flashing. Doing so may cause files to be lost or damaged.

Do not put labels or stickers on memory cards. The sticker may peel off, preventing the card from being ejected and damaging the P-4000.

Avoid using or storing cards in direct sunlight, or in places that are extremely hot, humid, or dusty.

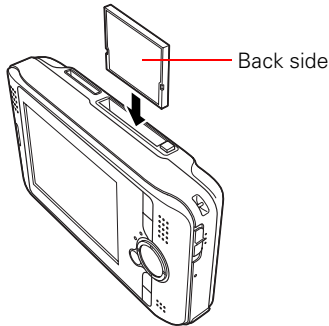


## Using the CompactFlash Card Slot

You can use Type I and Type II CompactFlash cards or Microdrive cards in the C/F Card slot. If you have a CompactFlash adapter, you can also use other types of cards, as described in “Inserting and Removing Memory Cards” on page 16.

Insert the memory card into the slot with the back of the card facing the LCD. Then push the memory card all the way into the slot.

If you are using a CompactFlash adapter, put the card into the adapter and insert the adapter into the slot.

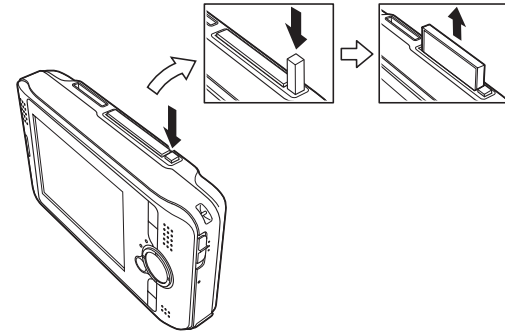


### Caution:

Make sure you insert memory cards in the correct orientation. Otherwise, the card and P-4000 may be damaged.

To remove a card from the C/F Card slot, first make sure the Access light is off. Then press the eject button and pull out the card.

If the button is not sticking out, press it once to pop it out, then press it again to eject the card.



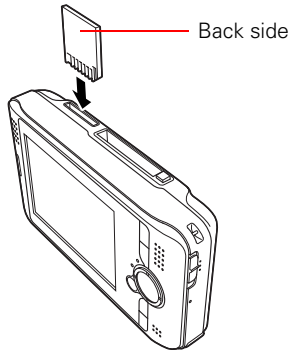
### Note:

If you are using a CompactFlash adapter, remove the adapter from the P-4000; do not remove only the memory card.

## Using the Secure Digital Card Slot

You can use Secure Digital or MultiMedia cards in the SD Card slot.

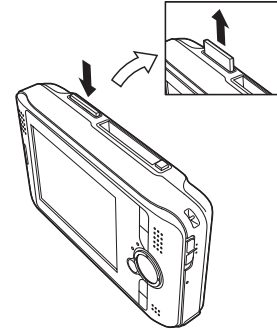
Insert the memory card into the slot with the back of the card facing the LCD. Then push the memory card all the way into the slot.



### Caution:

Make sure you insert memory cards in the correct orientation. Otherwise, the card and P-4000 may be damaged.

To remove a card from the SD Card slot, first make sure the Access light is off. Then press in on the top of the card.



When the card pops out, pull it out of the slot.

## Copying Files from a Memory Card

After you insert a memory card, you can browse the files and decide what you want to do with them, or simply copy all the files on the card to the P-4000.

### Note:

When the battery is low, copying may not be completed. Use the AC adapter if this happens.

## Supported Image Formats

Supported files	Extension	Details
JPEG	.jpg .jpeg	Minimum size: 160 × 120 pixels Maximum size: 17.8 megapixels* Maximum image aspect ratio: 8:1 Progressive JPEG files are not supported.
RAW	.cr2 .crw .erf .mrw .nef .pef	JPEG data stored in the header of RAW files is displayed.

\* Pixels refer to image resolution, not file size (bytes). The pixel size depends on the capability and settings of the camera used to capture the image, and whether you have resized the image in an image-editing program.

### Note:

You cannot rotate JPEG files larger than 8.9 megapixels.

The P-4000 supports images in RAW format that you have taken with the following digital SLR cameras:

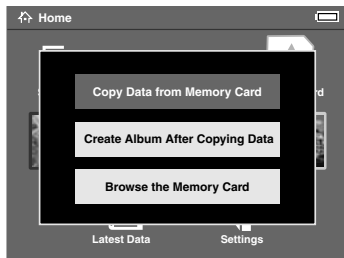
- Epson R-D1
- Canon® EOS-D30, EOS-D60, EOS-10D, EOS-20D, Digital Rebel, Digital Rebel XT, Kiss Digital, Kiss Digital N, EOS-1D Mark II, and EOS-1Ds Mark II
- Konica Minolta® Maxxum 7D and Alpha-7 Digital
- Nikon® D100, D1H, D2H, D2Hs, D1X, D2X, D50, D70, and D70s
- Pentax® \*ist D and \*ist DS
- Olympus® E-1 and E-300 (thumbnail display only)

RAW files do not support direct printing, rotation, zooming, or slide shows with the P-4000.

More RAW formats may be supported; check the Epson web site to get the latest information: <http://support.epson.com>.

## Copying Your Files

- 1 Insert the memory card as described in “Using the CompactFlash Card Slot” on page 17 or “Using the Secure Digital Card Slot” on page 18.
- 2 Select **Memory Card** in the Home screen and press the OK button.
- 3 If necessary, select the memory card you want to access. You see the following menu:



- 4 Select what you want to do by pressing up or down on the 4-way ring. Then press the OK button.

- If you select **Copy Data from Memory Card**, copying starts and the following screen appears:



The files are copied to a folder that is automatically created on the P-4000. The folder is named according to the date, for example, 20051225.001. Folders are numbered in the order they are copied.

- If you select **Create Album After Copying Data**, you can select an album or create a new one. See “Creating a New Album” on page 34 for instructions.
- If you select **Browse the Memory Card**, you see thumbnail images of the files on the card. See the following section for more information about browsing.

### Note:

You should back up files stored on the P-4000 to another storage device periodically.

## Browsing Files on a Memory Card

After you select Browse the Memory Card, you see thumbnail images of the files on the card.



### Note:

Although you can play audio and video files on a memory card, you will get better performance by copying them to the P-4000 before you play them. See “Playing Audio and Video Files” on page 30 for instructions.

- To move to the next screen full of images, press and hold up or down on the 4-way ring.
- To view an image full screen, use the 4-way ring to select the image you want, then press the OK button.

The selected image is enlarged to fit the full screen:



Press right or left on the 4-way ring to display the next or previous image. Video, audio, and unsupported files are skipped.

When an image is displayed full screen, you can zoom in or display information about the image, as described in the following sections.

### Zooming an Image

- To zoom in on an image displayed full screen, press the OK button. Continue pressing it to zoom in even further.
- To zoom out, press the **Cancel** button.
- To move around a zoomed image, use the 4-way ring.

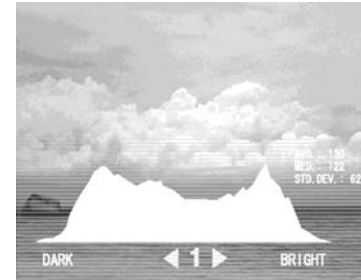
## Displaying Information

To view information about a full-screen image, press the **Display** button. The following information is displayed:

- File name
- Camera model
- Date of photo
- Pixel size
- Focal length
- ISO speed rate
- F-stop
- Shutter speed
- Exposure bias
- White balance
- Metering mode
- Flash

## Displaying a Histogram

When an image is displayed full screen, press the **Display** button twice to see a histogram that shows the photo's distribution of highlights, shadows, and mid-tones.



## Displaying Images as a Slide Show

You can display JPEG images on a memory card as a slide show.

- 1 Press the **Menu** button to display the pop-up menu.
- 2 Select **Start Slide Show** and press the **OK** button. The slide show starts.

### **Note:**

You can select transition effects, duration, and background music for the slide show. See “Setting the Slide Show Options” on page 49 for details.

You can also do the following from the pop-up menu when viewing images on a memory card:

- Lock an image to prevent deletion
- Copy the current image, all images, or selected images
- Delete the current image, all images, or selected images

For more information, see “Using the Pop-Up Menu” on page 39.

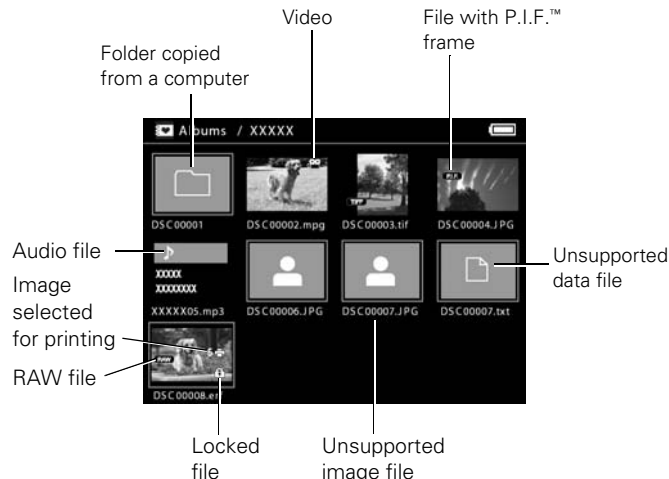
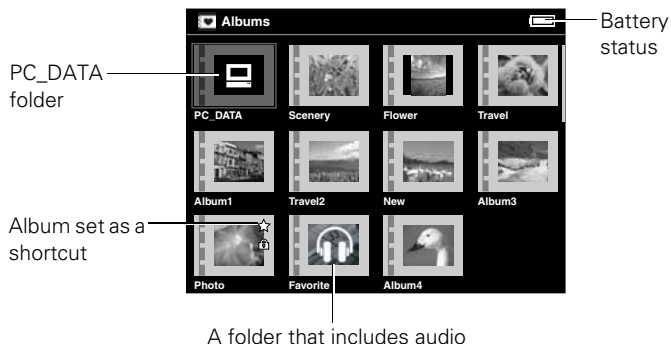
## Chapter 3

# Viewing and Playing Images, Audio, and Video

After you have copied files from a memory card, you can view or play them in various ways. This chapter explains how to view images and play audio and video files on your P-4000 and on a TV or projector.

## Screen Icons

The following illustrations identify the icons that appear on the screen:






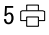









### Note:


P.I.F. is the abbreviation for Print Image Framer®, which lets you add frames to your images. Some Epson digital cameras support this feature.



## Screen Icon Descriptions

 <b>PC_DATA folder</b>	This is one of the default albums, which you use for copying files from your computer.
 <b>Battery status</b>	See “Charging the Battery” on page 10.
 <b>Folders containing audio</b>	Only folders that do not include image or video files display this icon.
 <b>Album shortcuts</b>	See “Creating an Album Shortcut” on page 36.
 <b>RAW files</b>	See “Supported Image Formats” on page 19.
 <b>Images selected for printing</b>	The number next to the icon indicates the quantity. See “Creating Print Orders” on page 47.
 <b>Video files</b>	See “Playing Audio and Videos” on page 29.
 <b>Files with P.I.F. frames</b>	P.I.F. icons are displayed only in Saved Data.
 <b>Unsupported data files</b>	You can set whether unsupported files are displayed or not. The factory setting is not to display them. See “Changing the View Mode Settings” on page 51.
 <b>Unsupported image files</b>	

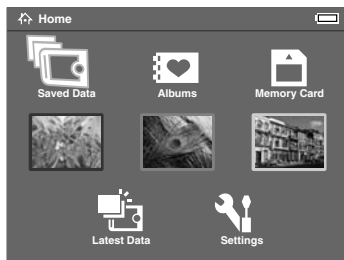
 <b>Folders copied from a computer</b>	When you select a folder in Saved Data, all files including those in subfolders are displayed. Subfolders are not displayed.
 <b>Audio files</b>	See “Playing Audio and Video Files” on page 30.
 <b>Locked files</b>	See “Protecting Files” on page 38.

- Files whose names contain characters other than alphanumeric are not displayed.
- When you select an album, files and subfolders included in the selected folder are displayed. Subfolders are displayed with the  icon.
- To display information or instructions, press the **Display** button. Information and instructions vary depending on the screen.

## Displaying Images

You can display all images in Saved Data or Albums as thumbnails. You can also display an image in full-screen format.

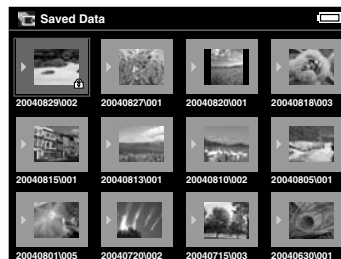
- 1 Select **Saved Data** or **Albums** in the Home screen and press the OK button.



Folders or albums that include data such as images, videos, or audio appear.

### Note:

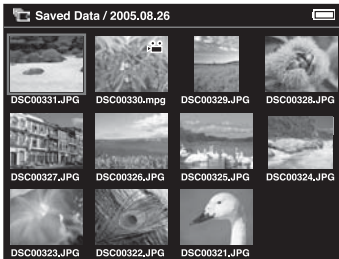
In the Saved Data screen, folders are displayed by memory card. You can change the setting to display folders by date. See "Changing the View Mode Settings" on page 51.



- 2 Select the folder or album containing the images you want to view using the 4-way ring, then press the OK button.

To move to the next screen, press down on the 4-way ring and hold.

Thumbnails of the images and other data are displayed:



- 3** Use the 4-way ring to select the image you want to view, then press the **OK** button. The selected image is enlarged to fill the screen:



## Zooming an Image

- To zoom in on an image displayed full screen, press the **OK** button. Continue pressing it to zoom in even further.
- To zoom out, press the **Cancel** button.
- To move around a zoomed image, use the 4-way ring.

## Displaying Information

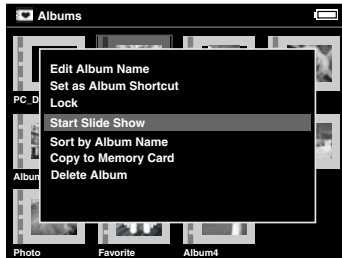
To view information about a full-screen image, press the **Display** button. The following information is displayed:

- File name
- F-stop
- Camera model
- Shutter speed
- Date of photo
- Exposure bias
- Pixel size
- White balance
- Focal length
- Metering mode
- ISO speed rate
- Flash

## Displaying Images as a Slide Show

You can display JPEG images as a slide show.

- 1 Select the folder or album you want to display as a slide show.
- 2 Press the **Menu** button to display the pop-up menu:



- 3 Select **Start Slide Show** and press the **OK** button. The slide show starts.

### Note:

You can select transition effects, timing, and background music for the slide show. See “Changing the View Mode Settings” on page 51 for details.

## Rotating an Image

You can only rotate images that are stored in albums. See “Creating a New Album” on page 34 for more information.

- 1 Press the **Menu** button to display the pop-up menu, then select **Rotate**.
- 2 Press right on the 4-way ring. The sub-menu appears.
- 3 Select **Right** to rotate the image 90° clockwise or **Left** to rotate it 90° counterclockwise. Then press the **OK** button.

If you want to rotate a group of images at the same time, select **Right-Select** (to rotate clockwise) or **Left-Select** (to rotate counterclockwise).

Select the images you want to rotate, then press the **Menu** button. The images are rotated.

### Note:

You cannot rotate JPEG images larger than 8.9 megapixels.

## Playing Audio and Videos

The P-4000 supports video files in resolutions ranging from 160 × 112 pixels to 640 × 480 pixels, with file sizes up to 2GB. The P-4000 supports audio files up to 100MB.

WMV, MPEG1/2, and DVD-Video are not supported. However, you may be able to convert files to supported formats using programs such as QuickTime® Pro.

## Supported Video Formats

File extension	Video codec	Audio codec	Max bit rate
.avi	MPEG-4 (Simple Profile)	AAC, MP3, ALaw, $\mu$ Law PCM, ADPCM	2.5 Mbps (average) at 30 fps
	Motion JPEG	ALaw $\mu$ Law PCM	3 Mbps
.mov	MPEG-4 (Simple Profile)	AAC	2.5 Mbps (average) at 30 fps
	Motion JPEG	ALaw $\mu$ Law PCM	3 Mbps

File extension	Video codec	Audio codec	Max bit rate
.mp4	MPEG-4 (Simple Profile)	AAC	2.5 Mbps (average) at 30 fps
.asf	MPEG-4 (Simple Profile)	ADPCM	2.5 Mbps (average) at 30 fps

## Supported Audio Formats

File extension	Audio codec	Details
.m4a .aac	AAC (MPEG4)	Maximum bit rate: 320 kbps (48 kHz, 16 bit Stereo)
	MP3	Maximum bit rate: 320 kbps (48 kHz, 16 bit Stereo)

## Playing Audio and Video Files

Select a video or audio that you want to play, then press the OK button.



The selected video or audio starts playing. Note the following when playing video and audio:

- All videos are played with the LCD resolution (640 × 480 pixels).
- While playing audio, the LCD turns off to conserve the battery. It turns on when you press any button.
- You can select audio files to use as slide show background music using the pop-up menu. See “Using the Pop-Up Menu” on page 39 for details.
- You can listen to audio using headphones. Simply insert the headphone cable into the headphone connector on the side of the P-4000.

## Controlling Audio and Video Play

The following table describes how the buttons work while playing audio and video files:

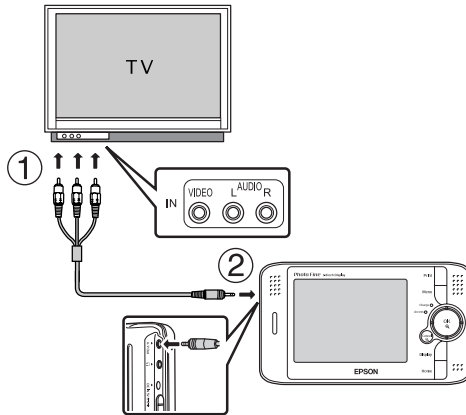
Button	Audio function	Video function
OK	Pause (press OK again to restart)	
Cancel	Stop the audio or video and return to the previous screen	
Up	Raise the volume	
Down	Lower the volume	
Left	Play the previous audio file. Press and hold to rewind.	Rewind
Right	Play the next audio file. Press and hold to fast forward.	Fast forward

## Viewing Files on a TV

You can connect the P-4000 to a TV or A/V projector and view your images, videos, and slide shows.

You will need a camcorder-to-TV/VCR audio/video cable (A/V cable with a 3.5 mm mini-plug to 3 RCA phono plugs). You can purchase the cable at an electronics store.

- 1 Connect the three RCA plugs to the video and audio IN jacks on your TV.
- 2 Connect the mini-plug on the other end to the A/V Out connector on the side of the P-4000. The LCD screen turns off.



- 3 Set the TV display to video input from the P-4000.

### Note:

You may need to set the Video Out setting to match your TV (see page 51).

Some TVs may crop your images on the top and bottom.

You can now use all of the P-4000 controls to play slide shows, photos, and videos on your TV.

## Chapter 4

# Managing Files

This chapter explains how to work with albums, copy and delete files and folders, and use the pop-up menu.

### Working with Albums

You can group your favorite files in albums. This allows you to create slide shows, portfolios, or other collections of images, videos, and audio files for special purposes.

The P-4000 includes several default albums, and you can easily create additional albums.

You can also create up to three album shortcuts on the Home screen to quickly access your favorites. See “Creating an Album Shortcut” on page 36 for details.

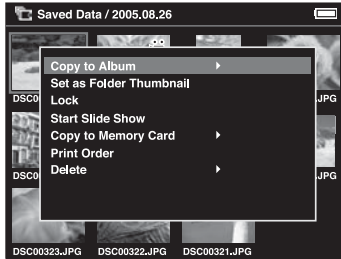
### Copying Files to an Album

- 1 Select the file or files to be copied in the thumbnails screen.

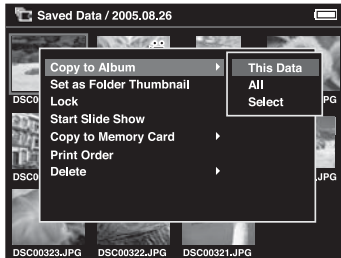




- 2 Press the Menu button to display the pop-up menu, then select Copy to Album using the 4-way ring.



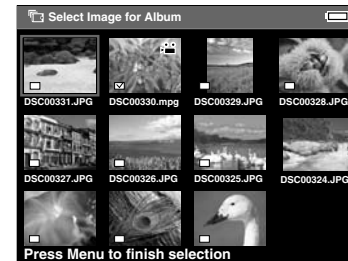
- 3 Press right on the 4-way ring. The sub-menu appears:



- 4 Do one of the following, then press the OK button:

- If you want to copy only the selected file to an album, select **This Data**.
- If you want to copy all the files in the folder, select **All**.
- If you want to select the file(s) to be copied, select **Select**.

If you choose **Select**, files in the folder are displayed as thumbnails.



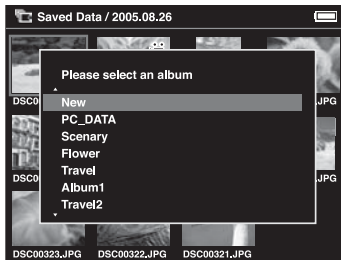
Select each file you want to copy and press the OK button. The selected files are displayed with a ✓ check mark.

After selecting all the files you want to copy, press the Menu button.

- 5 Select the album you want to copy to and press the OK button. The files are copied.

## Creating a New Album

- 1 Follow steps 1 through 4 under “Copying Files to an Album.”
- 2 Select **New** and press the OK button.

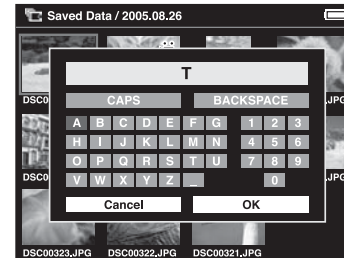


- 3 If you want to use one of the default album names, select the name from the displayed list, then press the OK button.

The selected files are copied.

- 4 If you want to create a new name for the album, select **Input name** and press the OK button.

The on-screen keyboard appears:

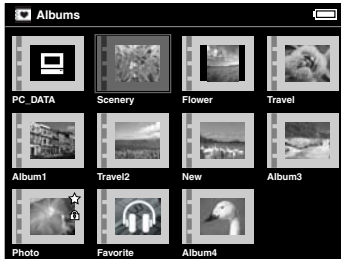


- 5 Select each letter using the 4-way ring, then press the OK button to input the selected letter.
  - To switch the letters between uppercase and lowercase, select **CAPS** and press the OK button.
  - To delete the last letter input, press the **Cancel** button or select **BACKSPACE** on the screen and press the OK button.

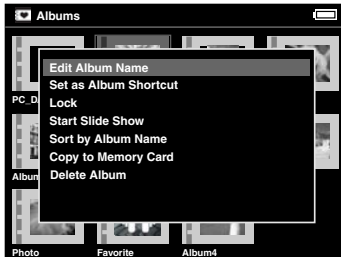
To delete everything that was input, select **Cancel** on the screen and press the OK button.
- 6 After you input the name, select OK on the screen using the 4-way ring, then press the OK button to save it.

## Changing an Album's Name

- 1 Select the album whose name you want to change.



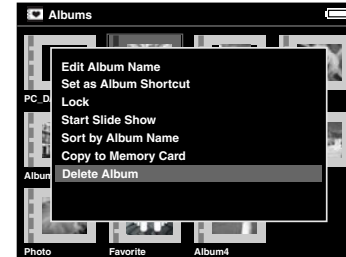
- 2 Press the Menu button to display the pop-up menu.
- 3 Select Edit Album Name using the 4-way ring, then press the OK button.



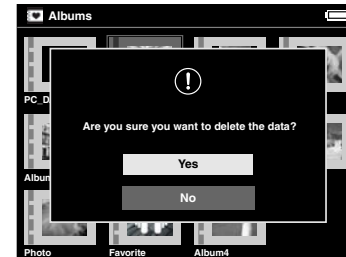
- 4 Follow steps 4 through 5 under “Creating a New Album” on page 34.

## Deleting an Album

- 1 Select the album you want to delete.
- 2 Press the Menu button to display the pop-up menu and select Delete Album using the 4-way ring. Then press the OK button.



The confirmation dialog box appears:



- 3 Select Yes and press the OK button.

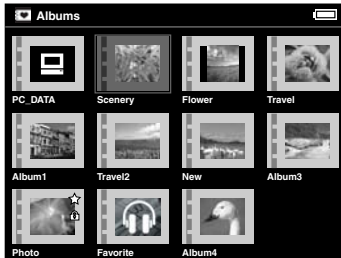
**Note:**

If the deleted album was set as an album shortcut, the shortcut on the Home screen is also deleted.

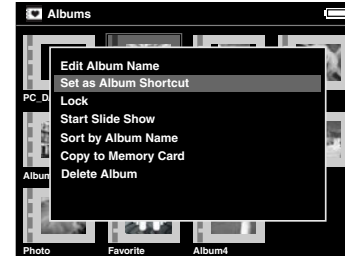
## Creating an Album Shortcut

You can create three shortcuts on the Home screen to allow quick and easy access to your favorite albums.

- 1 Select the album that you want to make a shortcut for.



- 2 Press the Menu button to display the pop-up menu, then select **Set as Album Shortcut** using the 4-way ring.



- 3 Press the OK button. The ☆ icon is displayed on the album thumbnail.

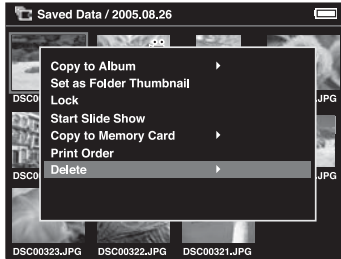
If three shortcuts already appear on the Home screen, any new shortcut will replace one of the old ones.

## Deleting Files and Folders

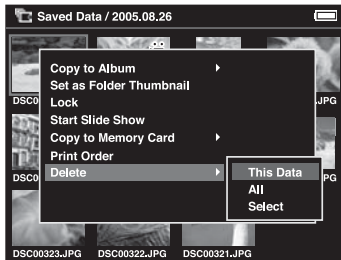
- 1 Select the file or folder that you want to delete in the thumbnails screen.



- 2 Press the Menu button to display the pop-up menu, then select **Delete** using the 4-way ring.



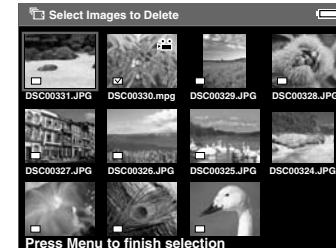
- 3 Press right on the 4-way ring. The sub-menu appears:



- 4 Do one of the following, then press the OK button:

- If you want to delete only the selected file or folder, select **This Data**.
- If you want to delete all the files in the folder, select **All**.
- If you want to select the data to be deleted in the folder, choose **Select**. Then press the OK button.

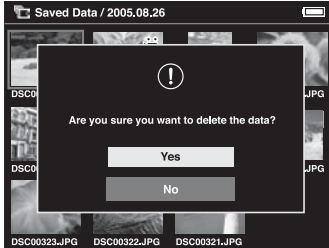
If you choose **Select**, files in the folder are displayed as thumbnails:



Select each file you want to delete and press the OK button. The selected files are displayed with a ✓ check mark.


After selecting all the files you want to delete, press the Menu button.

The confirmation screen appears:



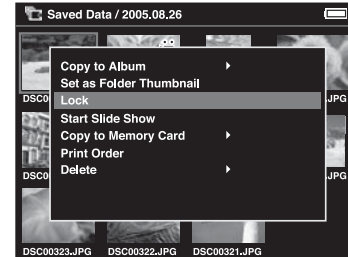
- 5 Select **Yes** and press the OK button.

## Protecting Files

You can lock selected files or folders to protect them from being deleted. When an item is locked, the  icon is displayed. Locked image files cannot be rotated.

- 1 Select the file or folder that you want to lock.

- 2 Press the **Menu** button to display the pop-up menu, and select **Lock** using the 4-way ring. Then press the OK button.

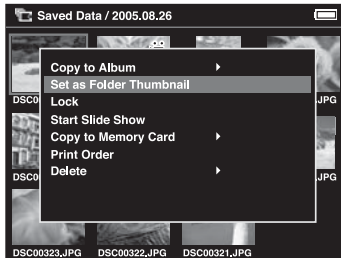


Files remain locked until you unlock them, even when you turn off the P-4000.

## Creating an Album/Folder Thumbnail

You can select an image to use as a thumbnail for an album or folder in Saved Data.

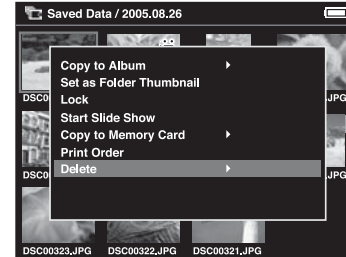
- 1 Select the file you want to use as a thumbnail in Saved Data.
- 2 Press the Menu button to display the pop-up menu, then select **Set as Album Thumbnail** or **Set as Folder Thumbnail** using the 4-way ring.



- 3 Press the OK button.

## Using the Pop-Up Menu

Press the Menu button to display the pop-up menu.



The table on page 40 summarizes the pop-up menu options. The options available depend on what you are doing when you press the Menu button.

## Settings Available in the Pop-Up Menu

<b>Copy from Memory Card</b>	Copy the selected file on a memory card to the P-4000.
<b>Copy to Album</b>	Copy the selected file or folder to an album. See "Copying Files to an Album" on page 32.
<b>Copy to Memory Card</b>	Copy the selected file or folder to a memory card.
<b>Delete</b>	Delete a selected file or folder. See "Deleting Files and Folders" on page 36.
<b>Delete Album</b>	Delete the selected album. See "Deleting an Album" on page 35.
<b>Display P.I.F. Frames*</b>	Display the selected image with its frame if the image includes P.I.F. data. You can cancel P.I.F. mode by pressing the <b>Cancel</b> button.
<b>Edit Album Name</b>	Change the selected album's name. See "Changing an Album's Name" on page 35.
<b>Lock/Unlock</b>	Lock or unlock the selected file or folder. See "Protecting Files" on page 38.
<b>View by Memory Card/View by Date</b>	Set how to display the folders in Saved Data. Folders can be grouped by memory card or date.

<b>Print Order</b>	Set how many copies you wish to print of the selected images. See "Creating Print Orders" on page 47.
<b>Register to Slide show BGM</b>	Register the selected audio file as slide show background music (BGM).
<b>Rotate</b>	Rotate the selected image in an album by 90°. If an image is locked or has an auto-rotation Exif tag, it cannot be rotated.
<b>Set as Album Shortcut/Delete from Album Shortcut</b>	Set the selected album as a shortcut on the Home screen. Or, delete the selected shortcut. See "Creating an Album Shortcut" on page 36.
<b>Set as Album/Folder Thumbnail</b>	Set the selected file as a thumbnail icon for an album or folder. See "Creating an Album/Folder Thumbnail" on page 39.
<b>Sort by Album Name</b>	Sort albums alphabetically.
<b>Sort by Date</b>	Sort albums by the date they were created.
<b>Start Slide Show</b>	Display images in the selected album or folder as a slide show. See "Displaying Images as a Slide Show" on page 28.

\* P.I.F. is an abbreviation for Print Image Framer, which lets you add frames to your images. Some Epson digital cameras support this feature.



## Settings Available in the Slide Show Pop-Up Menu

Slide Show BGM	Select the background music to play during the slide show.
Slide Show Duration	Select the timing for each image in the slide show.
Slide Show Effect	Select one of the five slide show transition effects. The slide show is executed with the selected effect.

## Copying Files to and From Your Computer

You can connect the P-4000 to your computer using the USB cable that came in the box. Your computer recognizes the P-4000 as an external hard disk drive, and you can easily copy files back and forth.

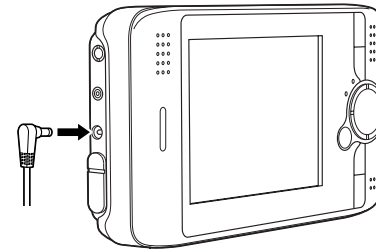
You should use the AC adapter when you connect the P-4000 to your computer.

### Note:

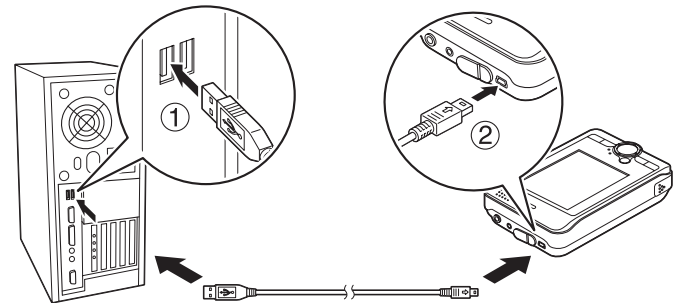
If your computer uses Windows® 98SE, you need to install driver software before you connect the P-4000. See the *P-4000 Basics* guide for instructions.


## Connecting the P-4000 to Your Computer

- 1 Connect the AC adapter to the P-4000 and plug it in. Then turn on the P-4000 and your computer. Make sure the P-4000 is at the Home screen.



- 2 Connect the USB cable to your computer. Then open the USB connector cover and connect the other end of the USB cable to the P-4000.



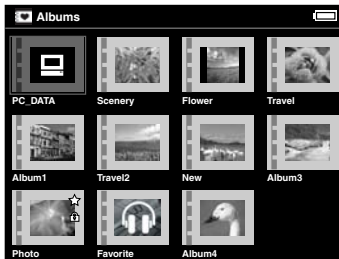
The  PC peripheral mode icon is displayed briefly, then the LCD turns off. You can turn it on by pressing any button.

- 3 Select the **EPSON\_PV** drive on your computer. In Windows, you may have to use My Computer to select the drive.

From your computer, you will see an Albums folder and a Cards folder (corresponding to Saved Data on the Home screen). Do not change the names of these folders or any of their subfolders.

To locate files in the Cards folder, you will need to open a series of subfolders.

- 4 Copy files to the **PC\_DATA** folder (within the Albums folder) only. If you copy files to any other folder, the P-4000 will not recognize the files.



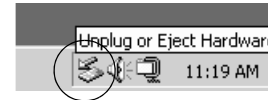
The **PC\_DATA** folder is one of the default albums on the P-4000; you cannot rename or delete it, or create an album thumbnail for it.

**Note:**

You cannot copy files from a memory card in the P-4000 to your computer; you must first copy them to the P-4000.

## Disconnecting the P-4000 From Your Windows Computer

- 1 Click **Unplug or Eject Hardware** in the taskbar at the bottom of the computer screen.



- 2 Turn off the P-4000 and remove the USB cable from your computer.

**Note:**

After copying files to a computer running Windows 98, you may see a blue screen when you remove the cable. To avoid this, turn the computer off before removing the cable.

- 3 Remove the USB cable from the P-4000.

## Disconnecting the P-4000 From Your Macintosh

- 1** Drag and drop the P-4000 icon to the trash.
- 2** Turn off the P-4000 and remove the USB cable from your Macintosh.
- 3** Remove the USB cable from the P-4000.

## Chapter 5

# Direct Printing

You can print your photos directly on any of the following Epson printers without connecting a computer:

- Epson Stylus® Photo R300 and R300M
- Epson Stylus Photo R320
- Epson Stylus Photo RX600
- Epson Stylus Photo RX620
- Epson Stylus Photo RX700
- PictureMate®
- PictureMate Deluxe Viewer Edition

More printers may be supported; check the Epson web site to get the latest information: <http://support.epson.com>.

You can use the following sizes and types of paper.

Paper	Size
Premium Glossy Photo Paper	4 × 6 in., 5 × 7 in., Letter, A4
Premium Semigloss Photo Paper	Letter

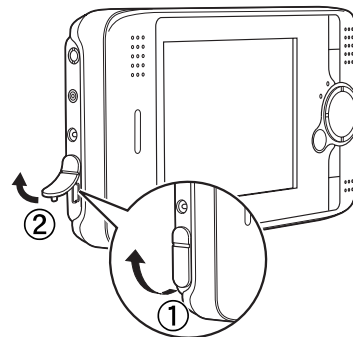
### Note:

For details about paper, see your printer documentation. PictureMate prints on 4 × 6-inch paper only.

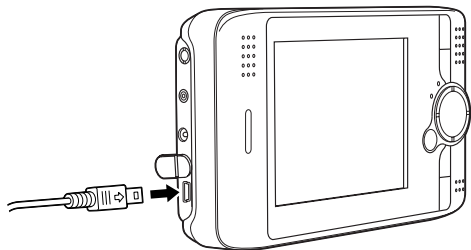
## Connecting the P-4000 to a Printer

Follow these steps to connect the P-4000 to your printer:

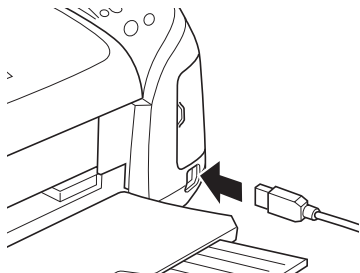
- 1** Make sure the P-4000 and the printer are turned off.
- 2** Open the USB connector cover:



- 3 Connect the small end of the USB cable to the P-4000.



- 4 Connect the other end of the cable to the EXT I/F connector on the printer.



The EXT I/F connector may be in a different location on your printer.

- 5 Connect the AC adapter to the P-4000.
- 6 Turn on the printer and the P-4000.

**Note:**

Don't worry if you see the message **Camera is connected** on the printer's LCD panel. You will still be able to print from the P-4000.

## Printing Your Photos

- 1 Make sure the printer is connected and has paper and ink. Make sure the AC adapter is connected to the P-4000 before you print.
- 2 To print a single photo, select the image. If you want to print multiple images in a folder or album, just open the folder or album.

**Note:**

You cannot print JPEG images that exceed 4600 pixels in either the vertical or horizontal direction.

- 3 Press the **PRINT** button. You see the Print menu:



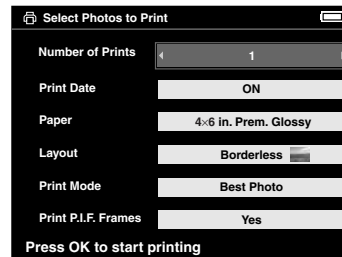
4 Do one of the following:

- To print only the selected image, choose **Print This Photo**.
- To print all the images in the selected folder or album, select **Print All Photos**.
- To add images to be printed and select the number of copies, choose **Select Photos to Print**. You see this screen:



Select the images you want to print and the number of copies for each one.

5 Press the OK button. You see the Print Settings menu:



6 Use the 4-way ring to choose the settings you want:

<b>Number of Prints</b>	Select the number of copies, up to 99, you want printed of the selected photo(s).
<b>Print Date</b>	Set whether to print the date the photo was taken (if the image includes date information) or the date the file was created.
<b>Paper</b>	Select the paper type and size that is loaded in the printer.
<b>Layout</b>	Choose Border or Borderless printing. If you selected all photos, choose the number per page. For Letter size, choose 3, 4, 9, or 20.
<b>Print Mode</b>	Select Photo or Best Photo.
<b>Print P.I.F. Frames</b>	Set whether to print the frame if the image includes P.I.F. data.

- 7 Press the OK button when you are ready to start printing.

During printing, the LCD is turned off. When you are finished printing, make sure you disconnect the USB cable.

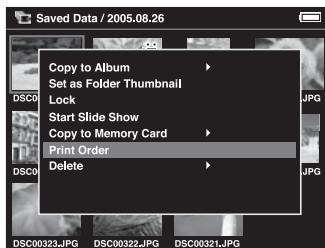
## Creating Print Orders

A print order identifies images that you want to print, and the number of copies of each image. You can create or modify print orders at any time while using the P-4000. Then you can print your images whenever it is convenient.

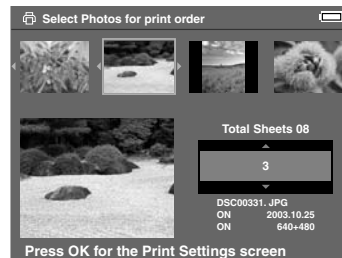
### Note:

Print orders are saved even after turning turn off the P-4000.

- 1 Select an image in the thumbnails screen or in full screen view.
- 2 Press the Menu button to display the pop-up menu, and select Print Order using the 4-way ring.

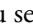


You see the print order screen:



### Note:

If you select the image in full-screen view, the print order screen looks different from the one above, but the instructions are the same.

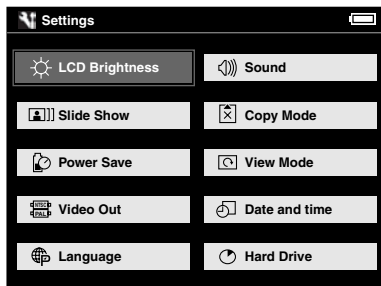
- 3 Press up or down on the 4-way ring to set the number of prints you want for the selected image.
- 4 If you want to print another image in the folder or album, use the 4-way ring to select it.
- 5 Repeat steps 3 and 4 until you set the quantities for all the images you want to print. Then press the OK button. You see the  icon on the images that have print orders. The print order is saved until the image(s) are printed.

To print the selected images you selected, follow the instructions under “Printing Your Photos” on page 45.

## Chapter 6

# Customizing Settings

You can easily change the P-4000's settings to make it work best for you. Select **Settings** on the Home screen and press the OK button. You see this menu:



Each of these options is described in this chapter. Select the one you want to change and press the OK button.

## Adjusting the LCD Brightness

- 1 Select **LCD Brightness** and press the OK button.
- 2 Press left or right on the 4-way ring to select the brightness level you prefer. Then press the OK button.

## Adjusting the Volume and Beep Sounds

- 1 Select **Sound** and press the OK button.
- 2 Press left or right on the 4-way ring to turn the button beep on or off. This is the sound you hear whenever you press one of the buttons.
- 3 Press down on the 4-way ring to move to the volume setting, then press left or right to adjust the setting.

This setting controls the default volume for playing audio and video files. You can also adjust the volume when the files are playing.

- 4 Press the OK button when you are finished.



## Setting the Slide Show Options

You can select transition effects, background music, and timing for your slide shows.

- 1 Select **Slide Show** and press the **OK** button.
- 2 Press left or right on the 4-way ring to choose from the following 5 transition effects:
  - Film
  - Shutter
  - Fade
  - Curtain
  - Blend

A sample of each effect plays briefly on the screen. The effect you choose will be applied to all your slide shows.

- 3 Press down on the 4-way ring to move to the background music setting.

- 4 Press left or right on the 4-way ring to choose from the 5 music files, or from 3 additional files you have registered.

See “Settings Available in the Pop-Up Menu” on page 40 for information about registering an audio file as slide show background music.

- 5 Press down on the 4-way ring to move to the **Duration** setting.
- 6 Press left or right on the 4-way ring to select the length of time you want each image to remain on the screen before switching to the next.

Choose an interval from 3 seconds to 30 minutes. The default setting is 5 seconds.

- 7 When you are finished, press the **OK** button.

## Changing the Copy Mode Setting

This option lets you tell the P-4000 how to handle images on a memory card after copying.

- 1 Select **Copy Mode** and press the **OK** button.
- 2 Press left or right on the 4-way ring to choose from the following settings:
  - Select **Do Not Delete** if you do not want files on memory cards to be deleted after they have been copied to the P-4000.
  - Select **Delete** if you want files on memory cards to be automatically deleted, without a warning message, after you copy them to the P-4000.
  - Select **Confirm before deleting** if you want the P-4000 to ask before copying whether to delete the photos from the memory card after copying.
- 3 When you are finished, press the **OK** button.

## Setting the Power Save Options

The Power Save options conserve battery power by turning off the screen backlight and turning off the power after a set interval of inactivity.

- 1 Select **Power Save** and press the **OK** button.
- 2 Press left or right on the 4-way ring to set the **Time before LCD power-off**.

You can select 1 min, 5 min, or 10 min. The default setting is 10 minutes.
- 3 Press down on the 4-way ring to move to the **Time before power-off** setting.
- 4 Press left or right on the 4-way ring to select the number of minutes (from 1 to 15) before the power is shut off automatically if there is no activity. The default setting is 15 minutes.
- 5 When you are finished, press the **OK** button.

## Changing the View Mode Settings

You can change the way certain files and folders are displayed.

- 1 Select **View Mode** and press the **OK** button.
- 2 Press left or right on the 4-way ring to set **Auto-rotation** on or off. When this setting is on (the default), image files that include an auto-rotation setting are automatically rotated on the P-4000.
- 3 Press down on the 4-way ring to move to the **Folder View Mode** setting.
  - Choose **View by Date** to have one folder created for each date that files are copied.
  - Choose **View by Memory card** to have one folder created for each time a card is inserted.
- 4 Press down on the 4-way ring to move to the **Unsupported Files** setting.

Select **Show** if you want to see thumbnails for all files, including non-compatible file types. Select **Hide** to show only compatible files.

- 5 When you are finished, press the **OK** button.

## Selecting the Video Out Signal

If you have connected a TV, you may need to change the video output signal method.

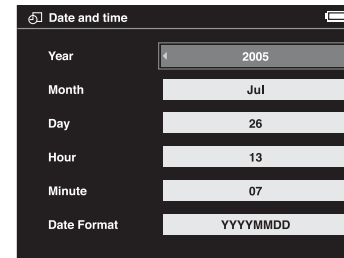
- 1 Select **Video Out** and press the **OK** button.
- 2 Press left or right on the 4-way ring to choose **NTSC** or **PAL**. (Televisions sold for the North American market are NTSC.)

If you change the setting while a device is connected, disconnect and reconnect the video cable.

- 3 When you are finished, press the **OK** button.

## Setting the Date and Time

- 1 Select **Date and time** and press the **OK** button to change these settings:



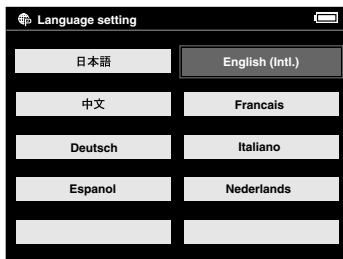
- 2 Press right or left on the 4-way ring to change the value for the selected item.
- 3 To go to the next option (Month or Day for example), press up or down. Then press right or left to change that setting.
- 4 After you finish making all settings, press the OK button.

**Note:**

If you remove the battery, the date and time settings will be erased after about one day; so you'll need to check and possibly change the settings. You'll also need to check the date and time after changing the battery to make sure they are set correctly.

## Choosing the Language

- 1 Select **Language** and press the OK button to choose from among eight languages:



- 2 Use the 4-way ring to select the language you want, then press the OK button.

## Checking the Remaining Storage Space

- 1 Select **Hard Drive** and press the OK button.

You may see a message while the P-4000 checks its space.

After a moment, you will see the amount of disk space used, the amount available, and the total disk space.

- 2 Press the OK button to return to the Settings menu.

## Chapter 7

# Maintenance and Troubleshooting

This chapter describes how to clean the P-4000 and solve problems.

## Cleaning the P-4000

Follow these guidelines when cleaning the P-4000:

- Turn off the P-4000 before cleaning.
- Use a clean, dry cloth to wipe it clean.
- Do not use harsh or abrasive cleaners.
- If necessary, clean the battery contacts with a dry cloth.

## Error Messages

When a problem occurs, an error message or icon may appear on the LCD. Refer to the following table to diagnose an error message. For more assistance, see “Problems and Solutions” on page 54.


Error message	Description
A file access error has occurred. Do not eject the memory card if it is being accessed.	Wait until the Access light turns off; then reinsert the memory card and try again.
An error occurred while verifying. Files will not be deleted.	Some files to be deleted from the memory card were skipped. Check the files.
Some errors occurred while copying. Copying was canceled.	Some files were skipped. The memory card may be write-protected. Check the memory card and try again.




## Problems and Solutions

Use the information in this section to diagnose problems and find solutions.

### Power Problems

#### The power does not turn on.

Cause	What to do
The battery has run out.	When the  icon appears on the top right corner of the LCD, the battery has run out. See “Charging the Battery” on page 10 and charge the battery.
The battery is not installed correctly.	Make sure the battery is installed correctly. See “Installing the Battery” on page 9.
The P-4000 may have shut off automatically to save battery power.	Slide the power switch down to turn the P-4000 back on.

Error message	Description
Some errors occurred while deleting files. The operation was canceled.	Some files were skipped. The memory card may be write-protected. Check the memory card and try again.
There is no response from the printer.	Make sure the USB cable is connected correctly. Check your printer.
You must set the date and time to ensure correct operation.	Set the correct date and time. (See page 51.)
	Wait until the P-4000 cools down.
	The battery power is running out. Charge the battery. See “Charging the Battery” on page 10 for details.
 Press Reset	Press the Reset button. See “Resetting the P-4000” on page 57 for instructions.

## File Viewing Problems

### The image is not displayed.

Cause	What to do
The image format is not supported.	Make sure the image is a supported file type (JPEG or some RAW files).
The image data is corrupted.	Copy the image again.
The video or audio file is not supported.	See “Supported Video Formats” or “Supported Audio Formats” on page 29. You may be able to convert your file to one of the supported formats.
The LCD is too dark.	Adjust the LCD brightness. See “Adjusting the LCD Brightness” on page 48.
The USB cable is connected to the P-4000.	No image is displayed on the LCD when the USB cable is connected or during certain operations.
A video cable is connected to the P-4000.	The LCD turns off when you connect a video cable.

### A video is not displayed clearly or stops abruptly.

Cause	What to do
The bit rate of the video is too high.	Check the bit rate. See “Supported Video Formats” on page 29 for details.

### Sound breaks off when the video or audio is played.

Cause	What to do
The bit rate of the file is too high.	Check the bit rate. See “Supported Video Formats” or “Supported Audio Formats” on page 29 for details.

### No sound comes out when a video is played.

Cause	What to do
The Audio Codec of the file is not supported.	Check the file format. See “Supported Video Formats” or “Supported Audio Formats” on page 29 for details.

## File Operation Problems

### You cannot copy a file or files.

Cause	What to do
There is not enough space available on the hard drive to copy all of the files on the memory card.	Delete unnecessary files or reduce the number of files to copy from the memory card.
The file may be damaged.	Try to copy a different file.
Your P-4000 is connected to a computer running Windows 98.	If you want to copy files to or from a computer running Windows 98, you need to install driver software. See the <i>P-4000 Basics</i> guide for instructions.

### You cannot delete a file.

Cause	What to do
The file is locked.	Unlock the file and then delete it. (See “Protecting Files” on page 38 and “Deleting Files and Folders” on page 36.)

### You cannot locate files on the P-4000 when it is connected to your computer.

Cause	What to do
The files are in the PC_DATA folder.	Open the PC_DATA folder in the Albums folder.

### You cannot rotate an image.

Cause	What to do
The image is not in an album.	Copy the image into an album. You can only rotate images in albums.
The image is not in JPEG format.	You can only rotate images in JPEG format.
The image file is too large.	You cannot rotate JPEG images larger than 8.9 megapixels.



## Printing Problems

### You cannot print.

Cause	What to do
The printer is not supported.	See “Connecting the P-4000 to a Printer” on page 44 to make sure your printer is supported.
The printer’s power is off.	Turn on the printer.
The USB cable is not connected correctly.	See “Connecting the P-4000 to a Printer” on page 44 and reconnect the cable.
You cannot print a JPEG image.	Make sure the JPEG image does not exceed 4600 pixels in either the vertical or horizontal direction.

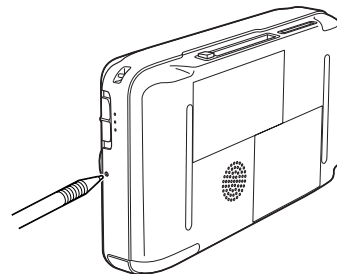
## Updating the Firmware and Printer Driver

Epson will occasionally update the P-4000 firmware. You can download the latest version from Epson’s Support web site: <http://support.epson.com>. Instructions for updating the firmware in your P-4000 will be included with the download information.

## Resetting the P-4000

If the P-4000 locks up or stops working, or you want to restore the default values, you can reset it.

Press the **Reset** button with a thin object.



The P-4000 shuts off, resets its default values, and comes back on.

## Where to Get Help

Epson provides technical assistance 24 hours a day through the electronic support services and automated telephone services listed below.

Service	Access
World Wide Web	From the Internet, you can reach Epson Support at <a href="http://support.epson.com">http://support.epson.com</a> . At this site, you can download drivers and other files, look at product documentation, access troubleshooting information, and receive technical advice through e-mail.
Automated Telephone Services	A variety of automated help services are available 24 hours a day, seven days a week. To use these services, you must have a touch tone telephone and call <b>(800) 922-8911</b> .

To speak to a technical support representative, dial:

- U.S.: **(562) 276-4303**, 6 AM to 6 PM, Pacific Time, Monday through Friday.
- Canada: **(905) 709-3839**, 6 AM to 6 PM, Pacific Time, Monday through Friday.

Toll or long distance charges may apply.

Before you call, please have the following information ready:

- Product name (Epson P-4000)
- Product serial number (located on the bottom edge of the P-4000)
- Proof of purchase (such as a store receipt) and date of purchase
- Description of the problem

You can purchase a replacement Lithium-ion battery (B32B818262) from an Epson authorized reseller. To find the nearest authorized reseller, please call 800-GO-EPSON (800-463-7766). To purchase online, please visit [www.epsonstore.com](http://www.epsonstore.com) (U.S. sales only). In Canada, please call (800) 463-7766 for a reseller referral.

# Appendix A

## Notices

### Safety Instructions

Read all these instructions before using the Epson P-4000, and keep this guide handy for later reference. Follow all warnings and instructions marked on the P-4000 and any options.

#### Using the P-4000

- Follow all warnings and instructions marked on this product.
- Use only AC adapter model A351H and Lithium-ion battery model D111A with this product.
- When connecting this product to a computer or other device with a cable, ensure the correct orientation of the connectors. Each connector has only one correct orientation. Inserting a connector in the wrong orientation may damage both devices connected by the cable.
- Do not insert objects into the slots or openings on this product.
- Do not touch the components inside this product unless instructed to do so in the documentation. Never force this product's components into place. Although this product is designed to be sturdy, rough handling can damage it.
- Never spill liquid onto this product.
- If this product emits unusual noises, odors, or smoke, cancel the current operation and turn it off immediately. Disconnect the AC adapter from the product, then unplug the AC adapter from the power outlet. Contact Epson.
- To prevent fire or electric shock, do not cover this product with a blanket or other covering that may give off a static electric shock.
- To prevent fire or electric shock, do not expose this product or its options to rain or moisture.
- To prevent fire or explosion, do not use this product where flammable or volatile gas is stored.

- Do not use this product outdoors during a thunderstorm.
- Do not use this product after moving it between extreme temperatures, which may cause condensation to form on electronic parts.
- If you use this product in places where the use of electronic devices is limited, such as in airplanes or hospitals, follow all instructions in those places.

### Using the Battery

- If battery acid gets into your eyes or on your skin, immediately rinse the affected area thoroughly with water and seek medical treatment. If a battery is swallowed, seek medical treatment immediately.
- Use only an Epson Lithium-ion battery for the P-4000 according to the instructions in this manual.
- Use only AC adapter model A351H and P-4000 model G941B to charge batteries.
- Do not use the battery that comes with this product for other devices.
- To protect against short-circuiting, do not remove the outside sleeves of the battery.
- Do not handle the battery with wet hands or use it near water.
- Do not expose the battery to water or high humidity.
- Do not drop, puncture, disassemble, mutilate, or short-circuit the battery.
- Do not place the battery near or into fire or water.
- Do not use batteries that are leaking or damaged in any way.
- Do not charge the battery on devices except this product.
- Do not charge the battery near open flame or in very hot locations.
- Keep batteries away from heat sources.
- Do not leave the battery in a vehicle, to prevent the battery from overheating.
- Do not insert objects into any openings as they may touch dangerous voltage points or short-circuit components.
- Prevent the battery from coming into contact with metal objects that could short-circuit it, such as coins or keys.
- Do not insert the battery into power outlets or other power sources such as car cigarette lighter sockets.
- Do not solder wires or terminals directly to the battery.
- Do not touch battery terminals.

- Keep batteries away from open flame if they leak or smell strange.
- If overheating, discoloration, or distortion occur, remove the battery from this product and do not use it.
- Charge the battery before using it if it has not been used for a long period.

### Storing the Battery

- When not using this device for a long period, remove the battery from this product and store it separately.
- Do not store batteries where the temperature or humidity is very high.
- Store batteries out of children's reach.

### Disposing of the Battery

Before disposing of the battery, make sure you discharge it completely.

#### **Warning:**

Be sure to securely cover the end of the battery with tape to prevent combustion or explosion when disposing.

Do not incinerate or dispose of the battery in fire.

Do not dispose of batteries as ordinary refuse. Instead, dispose of them in a collection or recycle box in accordance with local laws.

For users in North America and Canada:



This mark indicates that the battery will be recycled by the RBRC. When you are ready to dispose of the battery, contact the RBRC at (800) 822-8837.

### Using the AC Adapter

- Use only the type of power source indicated on the AC adapter's label, and always supply power directly from a standard, domestic power outlet with a power cord that meets the relevant local safety standards.
- Place the AC adapter near an electrical outlet where the power cord can be easily unplugged.
- The AC adapter is designed for use and provided with this product. Do not attempt to use it with other electronic devices unless specified.
- Do not remove the AC adapter from this device during operations.
- The AC adapter included is designed for use with this product. Use of any other adapter could result in fire, electrical shock, or injury.
- Use only AC adapter model A351H with the P-4000.

- Do not connect the AC adapter when the battery is not installed. Otherwise, the P-4000 may be damaged.
- Use only the power source that meets the power requirements indicated on the label attached to the product. If you are not sure of the power supply specifications in your area, contact your local power company or regulatory agency.
- Make sure the total amperage of all devices plugged into the power outlet does not exceed the power outlet's ampere rating.
- Do not use a damaged or frayed AC adapter.
- If you use an extension cord with this product, make sure the total amperage of all devices plugged into the extension cord does not exceed the cord's amperage rating.
- Never disassemble, modify, or attempt to repair the AC adapter by yourself.
- Do not use power outlets controlled by wall switches or automatic timers.
- Do not use power outlets on the same circuit as large motors or other appliances that may cause voltage fluctuations.
- Avoid using outlets on the same circuit as photocopiers or air control systems that regularly switch on and off.
- Position this product's power cord so that it will not be stepped on or run over.
- Do not place any objects on the power cord and the AC adapter.
- Keep the power cord straight at the ends and at the points where it enters the transformer.
- The power cord should be placed to avoid abrasions, cuts, fraying, crimping, kinking, and other damage.
- If you cannot insert the plug into the power outlet, contact an electrician.
- Remove the AC plug from the outlet during lightning storms.
- For US and Canadian users: Use the included power cord or a 6 to 10 foot UL-approved type SPT-2 or heavier type, 2 × 18 AWG cord with a 125 V 10 A plug and 125 V 7 A connector.

### **Using the LCD**

- The LCD panel on this product may contain a few small bright or dark spots. These are normal and do not mean that your LCD panel is damaged in any way.
- If the LCD panel on this product is damaged, contact Epson.

- If the liquid crystal solution contained in the LCD panel on this product leaks out and gets onto your hands, wash them thoroughly with soap and water. If it gets into your eyes, flush them immediately with water. If discomfort or vision problems remain after a thorough flushing, see a doctor immediately.
- Use only a soft, dry cloth to clean the display. Do not use liquid or chemical cleaners.

### Using a Memory Card

- Only memory cards designed for the product's specifications can be used. (See "Inserting and Removing Memory Cards" on page 16.)
- The methods for using memory cards vary according to card type. See the documentation included with your memory card for details.
- Do not remove a memory card or turn off the product while the Access light is flashing.

### Storing, Maintaining, or Transporting the P-4000

- Do not store this product outdoors.
- Do not store this product near water.
- Do not store this product in a location subject to high temperature or humidity.

- Do not store this product in a location subject to rapid changes in temperature or humidity.
- Do not store this product in a location subject to direct sunlight or strong light sources.
- Unplug this product from the power outlet before cleaning it. Use a damp cloth for cleaning and do not use liquid or aerosol cleaners.
- Remove the battery and unplug this product and refer servicing to qualified service personnel under the following conditions: The power cord or plug is damaged; liquid has entered this product or its options; this product or its options have been dropped or the case is damaged; this product or its options do not operate normally or exhibit a distinct change in performance.

**WARNING:** The cords included with this product contain chemicals, including lead, known to the State of California to cause birth defects or other reproductive harm. **Wash hands after handling.**

*(provided in accordance with Proposition 65 in Cal. Health & Safety Code § 25249.5 et seq)*

## FCC Compliance Statement for United States Users

This equipment has been tested and found to comply with the limits for a Class B digital device, pursuant to Part 15 of the FCC Rules. These limits are designed to provide reasonable protection against harmful interference in a residential installation. This equipment generates, uses, and can radiate radio frequency energy and, if not installed and used in accordance with the instructions, may cause harmful interference to radio or television reception. However, there is no guarantee that interference will not occur in a particular installation. If this equipment does cause interference to radio and television reception, which can be determined by turning the equipment off and on, the user is encouraged to try to correct the interference by one or more of the following measures.

- Reorient or relocate the receiving antenna
- Increase the separation between the equipment and receiver
- Connect the equipment into an outlet on a circuit different from that to which the receiver is connected
- Consult the dealer or an experienced radio/TV technician for help

## WARNING

The connection of a non-shielded equipment interface cable to this equipment will invalidate the FCC Certification of this device and may cause interference levels which exceed the limits established by the FCC for this equipment. It is the responsibility of the user to obtain and use a shielded equipment interface cable with this device. If this equipment has more than one interface connector, do not leave cables connected to unused interfaces.

Changes or modifications not expressly approved by the manufacturer could void the user's authority to operate the equipment.

## For Canadian Users

This Class B digital apparatus complies with Canadian ICES-003.

*Cet appareil numérique de la classe B est conforme à la norme NMB-003 du Canada.*



## Declaration of Conformity

According to 47CFR, Part 2 and 15 for Class B Personal Computers and Peripherals; and/or CPU Boards and Power Supplies used with Class B Personal Computers:

We: Epson America, Inc.  
Located at: MS 3-13  
3840 Kilroy Airport Way  
Long Beach, CA 90806  
Telephone: (562) 290-5254

Declare under sole responsibility that the product identified herein, complies with 47CFR Part 2 and 15 of the FCC rules as a Class B digital device. Each product marketed is identical to the representative unit tested and found to be compliant with the standards. Records maintained continue to reflect the equipment being produced can be expected to be within the variation accepted, due to quantity production and testing on a statistical basis as required by 47CFR §2.909. Operation is subject to the following two conditions: (1) this device may not cause harmful interference, and (2) this device must accept any interference received, including interference that may cause undesired operation.

Trade Name: Epson  
Type of Product: Multimedia Storage Viewer  
Model: G941B  
Product: Epson P-4000

## Standards and Approvals

### Epson P-4000

EMC: FCC Part 15 Subpart B Class  
BCSA C108.8 Class B

### AC Adapter

Safety: UL60950  
CSA C22.2 No. 60950  
EMC: FCC Part 15 Subpart B Class B  
CSA C108.8 Class B

### Battery (Model D111A)

Safety: UL2054

# Specifications

## General

CPU:	TMS320DM270		
LCD:	3.8 inches, Epson VGA TFT LCD; 640 × 480 pixels		
Memory:	64MB SDRAM; 4MB flash ROM		
HDD:	2.5 inch HDD, 80GB, FAT 32		
Dimensions (without projections) and weight:	Height	3.3 inches (84 mm)	
	Width	5.8 inches (147 mm)	
	Depth	1.2 inches (31.4 mm)	
	Weight	Approx. 0.9 lb (415 g), including battery	
Temperature:	Operating (or charging):	41 to 95 °F (5 to 35 °C)	
	Non-operating:	−4 to 140 °F (−20 to 60 °C)	
Humidity (without condensation):	Operating:	30 to 80%	
	Non-operating:	10 to 80%	

Memory card: 3.3V CompactFlash memory card  
(Type I/ Type II, including Microdrive);  
SD memory card, MultiMedia Card,

**Note:**

A commercially available CF adapter is  
needed to use other memory cards.

Power sources: Lithium-ion battery (Model D111A)  
AC adapter (Model A351H)

Battery life  
(when fully  
charged)\*: Approx. 3.2 hours when playing a slide  
show (in the default settings)  
Approx. 2.7 hours when playing video  
Approx. 4.7 hours when playing audio

\* Times may vary depending on the memory card being used, the number  
of files, ambient temperature, and other factors.

## Electrical

Input voltage: DC 5.0 V  
Rated current: Maximum 2.3 A  
Power consumption: 4 W (with the battery)  
9 W (when using the AC adapter)

## Interface

USB connector:	One USB 2.0 (Mass Storage Class) interface for Slave connection
A/V Out connector:	Mini pin jack (3.5 mm)
Headphone Out connector:	M3 stereo mini pin jack (3.5 mm)
CF Card slot:	One slot (Type 1/Type 2, 3.3V) for CompactFlash memory card or MicroDrive
SD Card slot:	One slot for SD memory card or MultiMedia card

## Battery

Type:	Rechargeable Lithium-ion battery
Model:	D111A
Size: (H × W × D)	0.88 × 0.80 × 2.78 inches (22.45 × 20.4 × 71 mm)

Ratings:	3.7 V, 2600 mAh
Temperature:	Storing: $-4$ to $104$ °F ( $-20$ to $60$ °C)
	Keep the battery in a cool place when storing for a long period.

## AC Adapter

Model:	A351H
Input:	AC 100 to 240 V, 50 to 60 Hz, 0.3 to 0.1 A
Output:	DC 5.0 V, 2.3 A
Power consumption:	Maximum 18 W

## Optional Accessory

Model:	Lithium-ion battery, D111A
Product code:	B32B818262

# Index

## Numerics

4-way ring, 8

## A

A/V Out connector, 31

aac files, 29

AC adapter

- connecting, 10

- connector, 7

- safety instructions, 61 to 62

- specifications, 67

- standards, 65

- using, 9

Access light, 8

Accessories, 58

Activity light, 8, 12

Albums

- changing names, 35

- copying files to, 32 to 34

- creating, 34

- creating shortcuts, 36

- creating thumbnail, 39

- deleting, 35

- icon, 14

- using, 32

asf files, 29

Audio

- file formats, 29

- playing, 30

- problems, 55

- settings, 48

Audio/Video out connector, 7

Auto backlight control, 50

Auto power off, 11, 50

Auto-rotation, 51

avi files, 29

## B

Background music, slide show, 49

Backlight, power-off, 11, 50

Battery

- charging, 10

- cover, 7

- disposing of, 61

- icon, 10, 14

- installing, 9 to 10

- power, conserving, 11, 50

- recycling, 61

- removing, 11

- safety instructions, 60 to 61

- specifications, 67

- storing, 61

Beep, turning on/off, 48

BGM, slide show, 40, 49

Bit rate, video, 29

Brightness, LCD, 48

Buttons

- locking, 13

- using, 8

## C

Cable

- USB, 41 to 45

- video, 31

Cameras, RAW files from, 19

Cancel button, 8

Charge light, 8, 10

Charging the battery, 10

Cleaning the P-4000, 53

Codec, 29

CompactFlash

- adapter, 16

- card slot, 7, 17

Computer

- connecting, 41 to 43

- disconnecting, 42, 43

Connecting

- computer, 41 to 43

- printer, 44 to 45

- projector, 31

- TV, 31

Conserving battery power, 11, 50

Copying

- files, 20, 50

- problems, 56

Copy Mode settings, 50

Customizing settings, 48 to 52

## D

Date and time, setting, 12 to 13, 51

Declaration of conformity, 65

## Deleting

- albums, 35

- files and folders, 36 to 38, 50

Direct printing, 44 to 47

Disk space, 52

Display button, 8, 27

Duration, slide show, 49

## E

Effects, slide show, 49

Eject button, 7

Electrical specifications, 66

### Epson

- accessories, 58

- help, 58

- Store, 58

- supported printers, 44

Error messages, 53 to 54

## F

FCC compliance, 64

### File formats

- audio, 29

- images, 19

- video, 29

## Files

- browsing on memory card, 21 to 23

- copying from memory card, 20, 50

- copying to album, 32 to 34

- copying to computer, 41 to 43

- deleting, 36 to 38, 50, 56

- locking, 38

- problems copying, 56

- problems viewing, 55

- unsupported, 51

Firmware, updating, 57

### Folders

- creating thumbnail, 39

- deleting, 36 to 38

- naming, 20

- view mode, 51

## H

Hard Drive space, 52

Headphone connector, 7

Headphones, using with P-4000, 30

Help, Epson, 58

Histogram, displaying, 22

Home button, 8

Home screen, 14

## I

Icons, 24, 25

Images

- copying to album, 32 to 34

- displaying as a slide show, 23, 28

- displaying as thumbnails, 26

- displaying information, 27

- display problems, 55

- file formats, 19

- printing, 44 to 47

- rotating, 28

- zooming, 21, 27

Installing battery, 9 to 10

Interface specifications, 67

## J

JPEG files, 19

## L

Language setting, 12, 52

Latest Data, 14

Layout option, 46

LCD, 7, 48, 62

Lights, 8

Locking files, 38

## M

m4a files, 29

Macintosh, disconnecting P-4000, 43

Maximum bit rate, video, 29

Memory card

- adapter, 16

- browsing files, 21 to 23

- icon, 14

- safety instructions, 63

- types, 16

- viewing slide show, 23

Memory Stick, 16

Menu button, 8

Microdrive, 16

Motion-JPEG, 29

mov files, 29

mp3 files, 29

mp4 files, 29

MultiMedia card, 16

Music

- playing, 30

- slide show, 40, 49

## N

NTSC, 51

Number of Prints option, 46

## O

OK button, 8

## P

P.I.F., 24, 40, 46

PAL, 51

Paper

- option, 46

- types and sizes, 44

PC\_DATA folder, 42

PictureMate, 44

Pop-up menu, 39 to 41

Power

- conserving, 11, 50

- problems, 54

- switch, 7

- turning off, 15

- turning on, 12

Power Save options, 11, 50

Print button, 8, 45

Print Date option, 46

Printer

- connecting, 44 to 45

- settings, 46

Print Image Framer, 24, 40, 46

Printing

- photos, 44 to 47

- problems, 57

Print Mode option, 46

Print orders, 47

Problems

- copying files, 56

- deleting files, 56

- power, 54

- printing, 57

- solving, 53 to 57

- sound, 55

- video, 55

- viewing files, 55

Projector, connecting to, 31

Protecting files, 38

## R

RAW files, 19

Reset button, 7, 57

Resetting the P-4000, 57

Rotating images, 28

## S

Safety instructions, 59 to 63

Saved data, 14, 20

Secure Digital

- cards, 16

- card slot, 7, 18



## Settings

- Copy Mode, 50
  - customizing, 48 to 52
  - Date and time, 12 to 13, 51
  - Home screen option, 14, 48
  - Language, 12, 52
  - LCD Brightness, 48
  - Power Save, 50
  - Slide Show, 49
  - Sound, 48
  - Video Out, 51
  - View Mode, 51
- Shortcut icons, 14
- Shortcuts, 36
- Slide show
- pop-up menu, 41
  - registering music, 40
  - settings, 49
  - starting, 23, 28
- SmartMedia card, 16
- Sound
- problems, 55
  - settings, 48
  - turning beep on/off, 48
  - volume, 30
- Speaker, 7

## Specifications

- AC adapter, 67
  - battery, 67
  - electrical, 66
  - general, 66
  - interface, 67
  - standards and approvals, 65
- Stand, 12
- Status and error messages, 53 to 54
- Storage space, checking, 52

## T

- Technical support, 58
- Thumbnails, 26, 39
- Time, setting, 12 to 13, 51
- Troubleshooting
- audio problems, 55
  - error messages, 53 to 54
  - file operation problems, 56
  - file viewing problems, 55
  - power problems, 54
  - printing problems, 57
  - sound problems, 55
  - video problems, 55
- Turning off
- beep sound, 48
  - power, 15

Turning on  
    beep sound, 48  
    power, 12  
TV, connecting to, 31

## U

Unsupported files, 25, 51  
Updating firmware, 57  
USB  
    cable, 41 to 45  
    connector, 7, 41 to 45

## V

Video  
    codec, 29  
    file formats, 29  
    playing, 30  
    problems, 55  
Video Out setting, 51  
Viewing stand, 12  
View Mode settings, 51  
Volume, controlling, 30

## W

Windows, disconnecting P-4000, 42

## X

xD-Picture card, 16

## Z

Zooming images, 21, 27