

## Factory Parts Catalog

Product No.	E15TC75HPS	E15TC75HSS
Series	Icon-Pro	Icon-Designer
Market	North America	North America
Color	stainless steel	stainless steel
Volts	120	120
Owner's Guide	99526808en	99526808en



Electrolux Major Appliances  
North & Latin America  
P.O. BOX 212378  
AUGUSTA, GA 30917

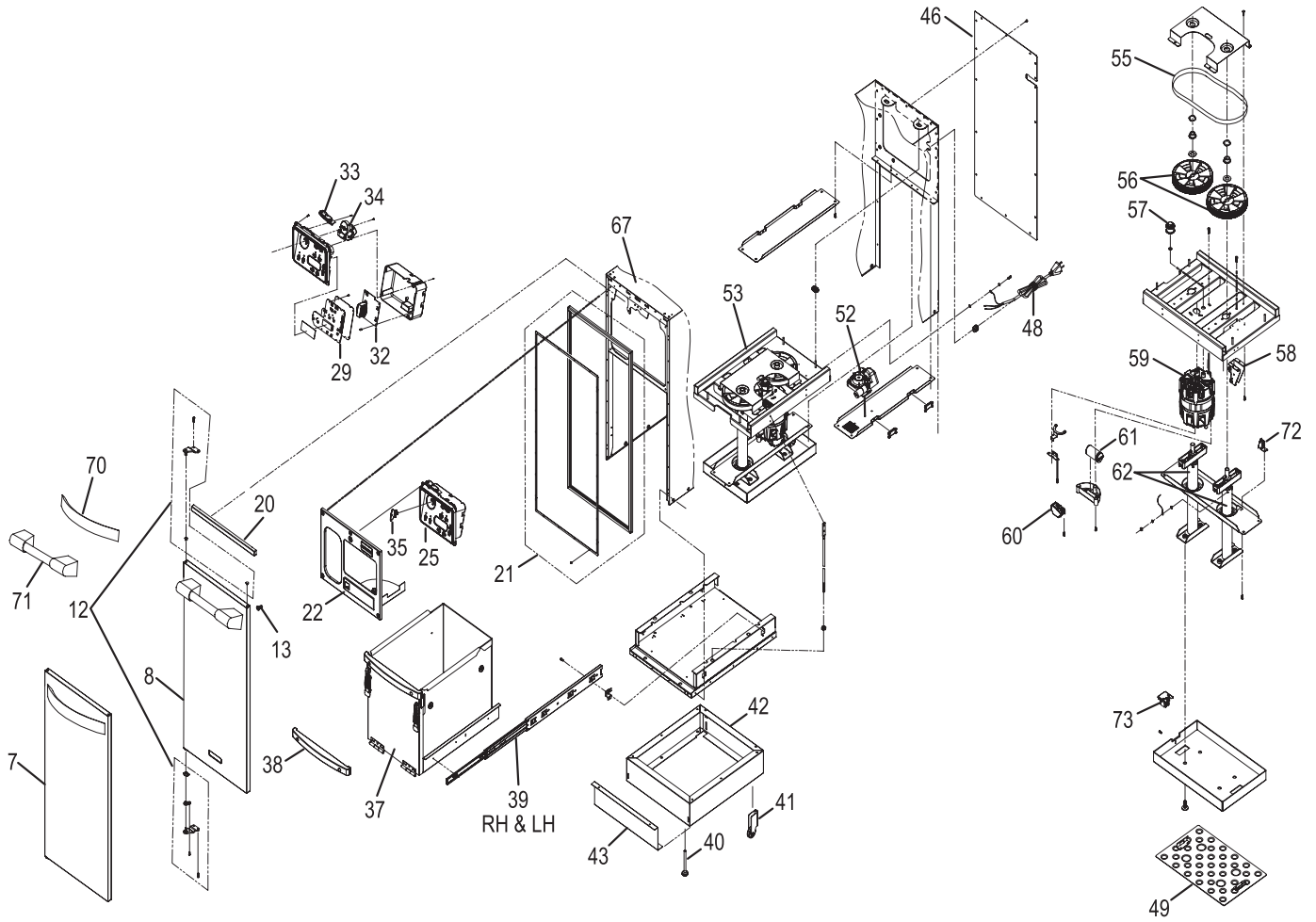
Publication No.  
**5995529046**  
08/12/08  
(EN/SERVICE/KC)  
099

### TRASH COMPACTOR

Model No.  
**E15TC75H**

Copyright © 2008 Electrolux Home Products, Inc.  
All rights reserved.

**RECOMMENDED SPARE PARTS**



---

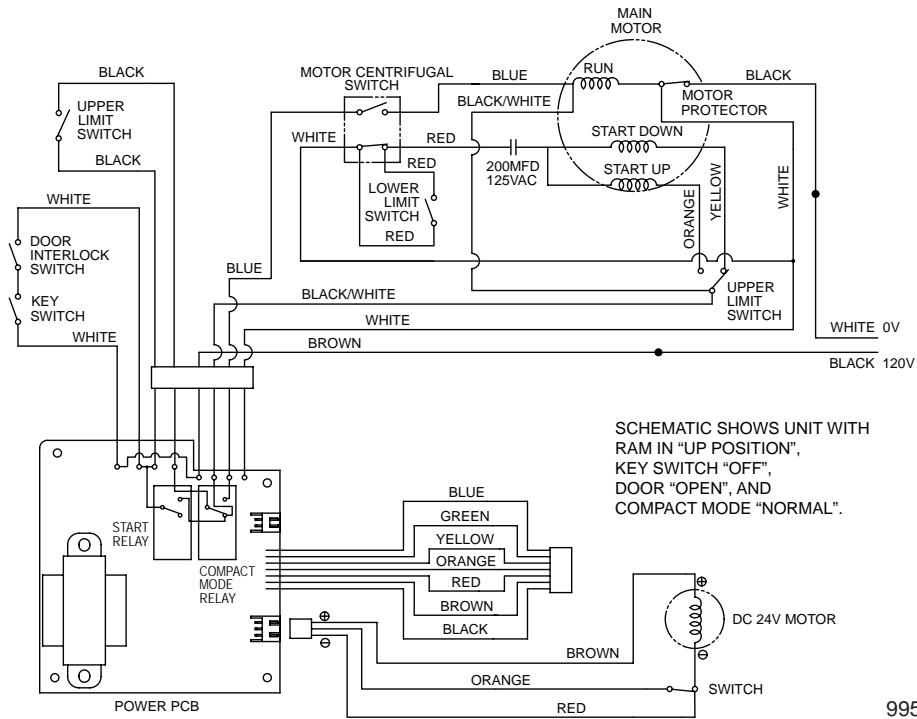
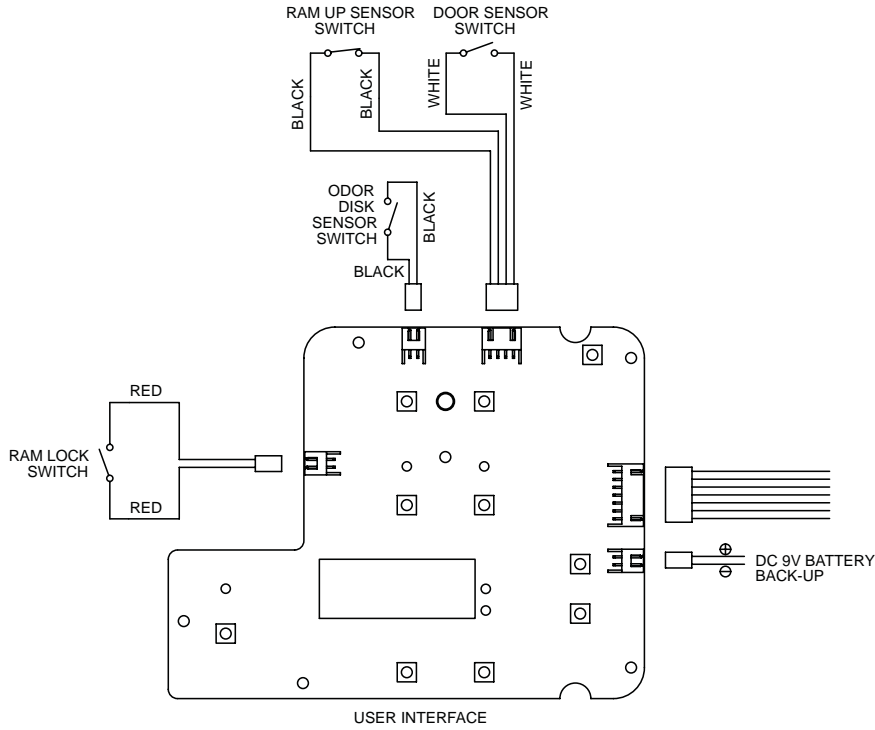
**RECOMMENDED SPARE PARTS**


---

*Model Index:* A E15TC75H (E15TC75HSS)  
B E15TC75H (E15TC75HPS)

POS. NO	PART NO.	DESCRIPTION
7	75304469070	A - Door Assy, Designer, w/handle
8	75304469071	- B Door Assy, Pro, w/handle
12	75304469073	A B Hinge Assembly, with pin, cap
13 #	75304469080	A B Actuator, interlock
20	75304469081	A B Cover, trim, plastic, top
21 #	75304469082	A B Gasket Assy, door, w/frame, screws
22	75304469083	A B Frame, control panel, auto
25 #	75304469085	A B Display Module, w/safety switch
29 #	75304469087	A B PC Board, main control
32 #	75304469089	A B Transformer, AC/DC
33 #	75304469090	A B Switch, interlock
34 #	75304469091	A B Touch Control, key pad
35	75304469092	A B Key, lock switch
37 #	75304469094	A B Bucket Assy, 37 #, Broan, S99526870, w/latch, handle
38	75304469095	A B Handle, bucket
39	75304469096	A B Slide Assembly, bucket, LH/RH
40	75304469097	A B Leveling Leg
41	75304469098	A B Roller, leveling
42	75304470119	A B Base, cabinet stand
43	75304469099	A B Toeplate, stainless
46	75304469101	A B Panel, back
48 #	75304469103	A B Power Cord, electric
49 #	75304469104	A B Plate, compaction, stainless
52 #	75304469110	A B Gear Motor, odor disk
53 #	75304469201	A B Power Unit, assembly assy
55 #	75304469203	A B Belt, drive
56 #	75304469313	A B Pulley, drive wheel, large
57 #	75304469314	A B Pulley, drive wheel, small
58 #	75304469315	A B Switch, limit, upper
59 #	75304469316	A B Motor, w/capacitor, switch
60 #	75304469317	A B Switch, centrifugal
61 #	75304469318	A B Capacitor, motor
62 #	75304469319	A B Ram Screw, assembly
67	75304470120	A B Cabinet, housing
70	75304470122	A - Handle, Icon-Designer
71	75304470123	- B Handle, Icon-Pro
72 #	75304470124	A B Switch, limit, lower
73	75304470125	A B Latch, compactor plate

### WIRING DIAGRAM



99526904B