

 **LINDY**®

COMPUTER CONNECTION TECHNOLOGY

USB to Serial Converter

User Manual
Benutzerhandbuch
Manuel Utilisateur
Manuale d'uso

English
Deutsch
Français
Italiano



LINDY No. 42856 & 42857



www.LINDY.com



CONTENT

*For detailed description of the **DRIVER INSTALLATION** with screen shots included please refer to the ENGLISH manual.*

The description in the german, french and italian manuals are as short guide only.

English Manual

1. Overview

Congratulations on your purchase of the USB-Serial adapter. This device provides a simple and easy way to connect Universal Serial Bus (USB) and Serial port interface.

With the advantage of USB port, users have the capability to utilize the peripheral with serial port interface in an easy to use environment such as plug and play & hot swap function. This adapter is designed for ideal connections to Cellular Phone, Digital Camera, Modems or ISDN terminal adapter with over 120kbps data transfer rate.

The USB-Serial adapter and software drivers are capable of providing a no-firmware-change feature that enable USB interface to be transparent to serial port peripherals with minimum modifications.

2. Package Content

- Hardware: USB-Serial adapter, USB type A to type B cable
- CD-ROM with USB-Serial drivers and User's Manuals

3. Product Features

- USB Specification Rev. 1.1 compliant
- Support the RS232 Serial interface
- Over 120kbps data transfer rate
- Support remote wake-up and power management

4. System Requirements

PC

- IBM® PC 486DX4-100 MHz CPU or higher or compatible system
- Available USB port
- CD-ROM drive
- Windows® 98, ME, 2000 or XP

MAC

- Power G3 OR G4 CPU or I-MAC
- Available USB port
- CD-ROM drive
- Mac OS 8.6 through 9.X

5. Driver Installation

5.1 Windows® 98 Driver Installation

Following the steps below to install Windows® 98 driver

- 5.1.1 Power on your computer and make sure that the USB port is enabled and working properly.
- 5.1.2 Plug in the **USB-Serial adapter** into the USB port and run the **Add New Hardware Wizard** to assist you in setting up the new device. Click "**Next**" to continue.



- 5.1.3 Select “**Search for the best driver for your device (Recommended)**”, and then click “**Next**” to continue.



- 5.1.4 Insert the **USB-Serial adapter** software driver into the CD-ROM drive and select Specify a location and type the “**D:\Driver\USB-SERIAL ADAPTER\Windows**” in the dialogue (D: represents CD-ROM)



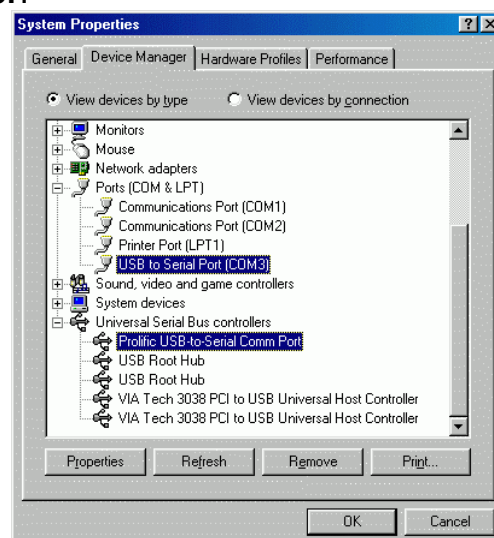
- 5.1.5 Windows® will detect the driver (**SERWPL.INF**) and shows the **Prolific USB-to-Serial Comm Port**. Click **“Next”** to continue installation.



- 5.1.6 Click Next to continue and let Windows® copy the needed files to your hard disk.



- 5.1.7 When Windows® finished installing the software, click **“Finish”**.
5.1.8 After install the driver, you have to check the **“Control Panel”-“System”-“Device Manager”** to make sure the driver has already installed, you can see a **USB to Serial Port (COM3)** under the **Ports (COM & LPT)** and a **Prolific USB-to-serial Com Port** under the **Universal Serial Bus Controller**.

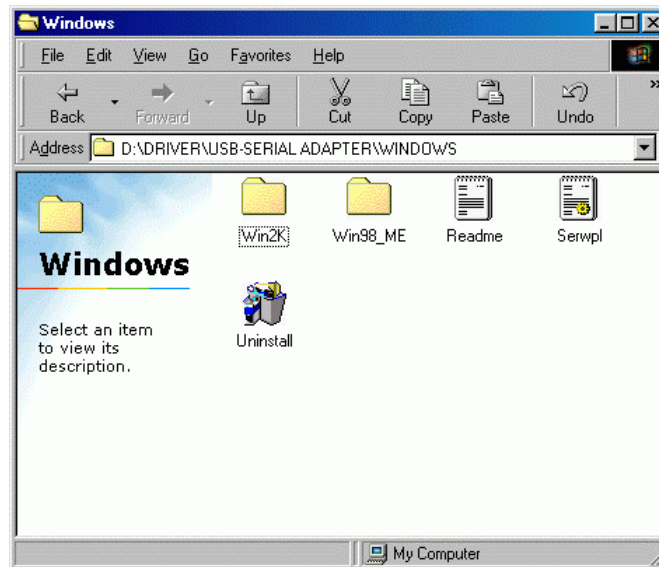


5.2 Windows® 98 Driver Un-installation

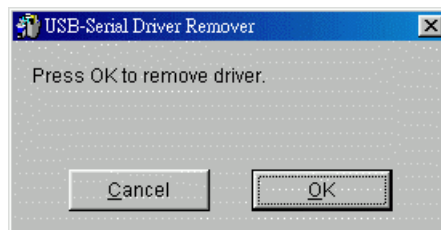
If you want to remove the USB-Serial adapter driver, you can uninstall it by following the steps below:

5.2.1 Unplug the USB-Serial adapter from your PC.

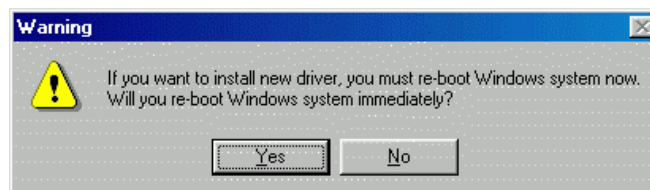
5.2.2 Run the **D:\Driver\USB-SERIAL ADAPTER\WINDOWS\ Uninstall.exe** from the software CD-ROM.



5.2.3 Click “Ok” to continue.



5.2.4 After remove the driver, you have to reboot the PC



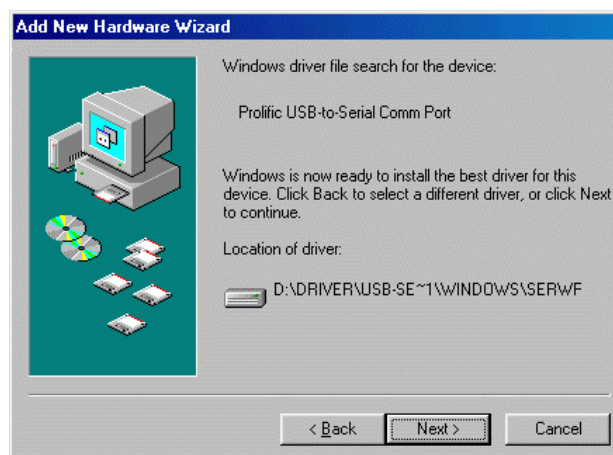
5.3 Windows® ME Driver Installation

Follow the steps below to install Windows® ME driver

- 5.3.1 Power on your computer and make sure that the USB port is enabled and working properly.
- 5.3.2 Insert the **USB-Serial adapter** software driver into the CD-ROM drive and Plug in the **USB-Serial adapter** into the USB port; select the **Automatic search for a better driver (recommended)**, and then click **“Next”** to continue.



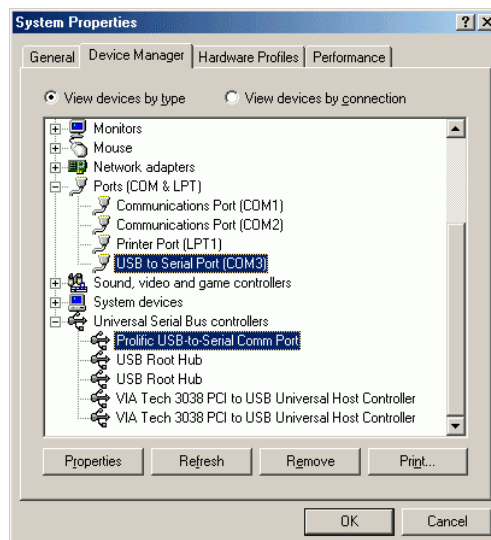
- 5.3.3 Windows® will detect the driver (**SERWPL.INF**) and show the **Prolific USB-to-Serial Comm Port**.



5.3.4 When Windows® finished installing the software, click **“Finish”**.



5.3.5 After install the driver, you have to check the **“Control Panel”-“System”-“Device Manager”** to make sure the driver has already installed, you can see a **USB to Serial Port (COM3)** under the **Ports (COM & LPT)** and a **Prolific USB-to-serial Com Port** under the **Universal Serial Bus Controller**.

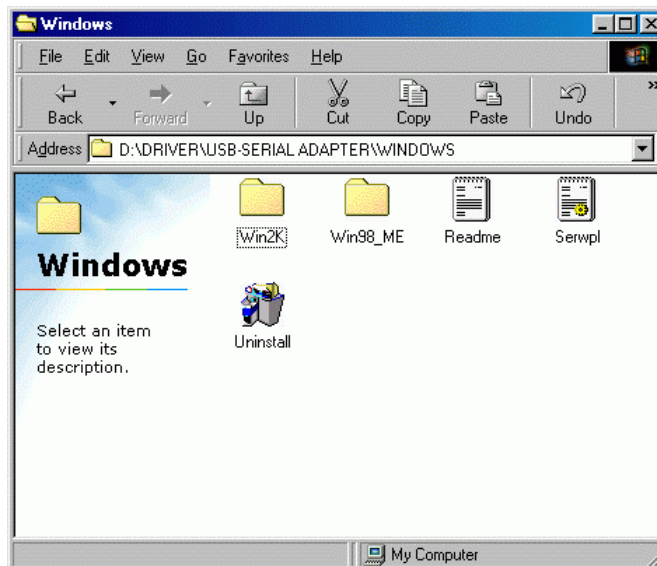


5.4 Windows® ME Driver Un-Installation

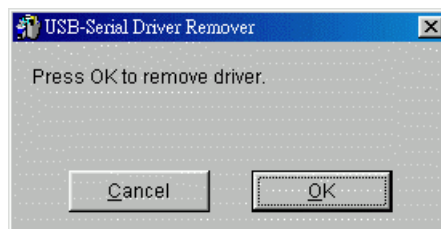
If you want to remove the USB-Serial adapter driver, you can uninstall it by following the steps below:

5.4.1 Unplug the USB-Serial adapter from your PC.

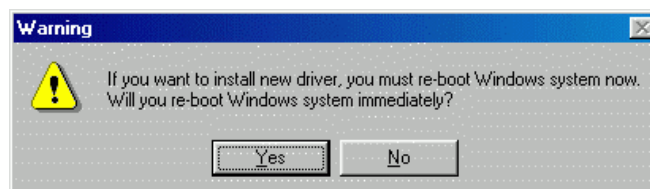
5.4.2 Run the **D:\Driver\USB-SERIAL ADAPTER\WINDOWS\ Uninstall.exe** from the software CD-ROM.



5.4.3 Click "Ok" to continue.



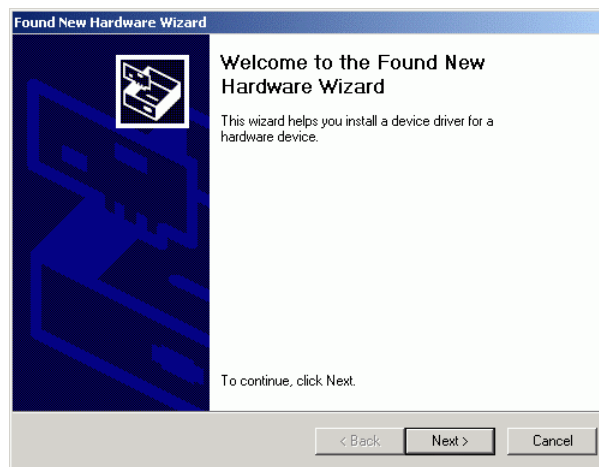
5.4.4 After remove the driver, you have to reboot the PC



5.5 Windows® 2000 Driver Installation

Follow the steps below to install Windows® 2000 driver:

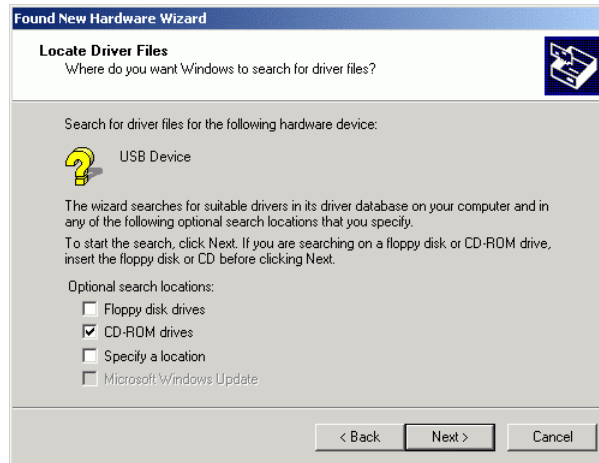
- 5.5.1 Power on your computer and make sure that the USB port is enabled and working properly.
- 5.5.2 Insert the **USB-Serial adapter** software driver into the CD-ROM drive and Plug in the USB-Serial adapter into the USB port, Windows will run the **Found New Hardware Wizard** to assist you in setting up the new device. Click **“Next”** to continue.



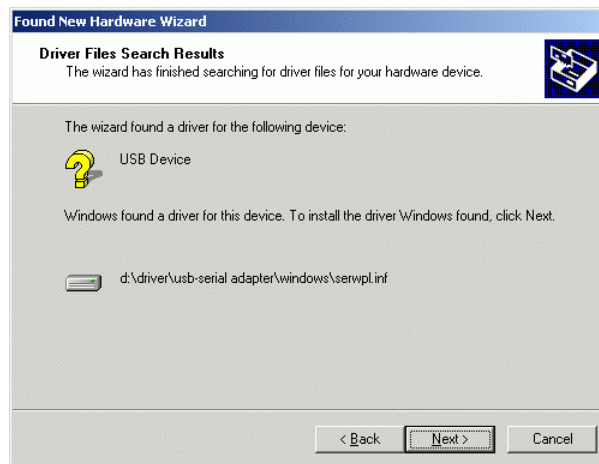
- 5.5.3 Select **Search for a suitable driver for my device (recommend)** and click **“NEXT”** to continue.



- 5.5.4 Select the **“Specify a location”** drive and click **“NEXT”** to continue.



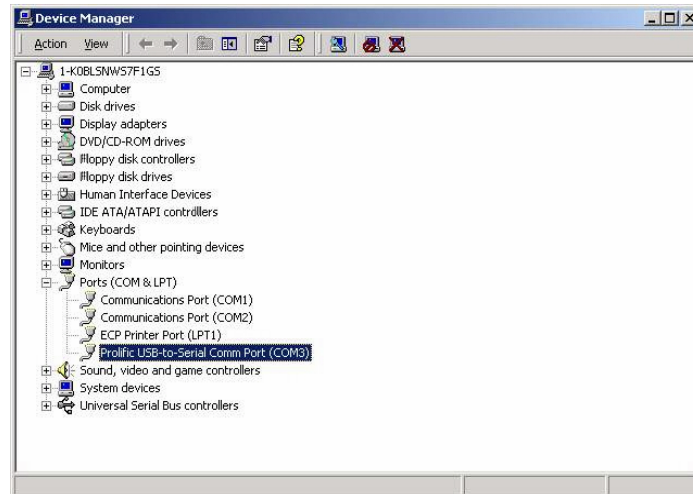
5.5.5 Windows® will detect the driver (**SERWPL.INF**) and Click “**Next**” to continue.



5.5.6 Click “**Finish**” to finish the step.



5.5.7 After the step, you have to check the “**Control Panel**”-“**System**”-“**hardware**”-“**Device Manager**” and you can see the (**Prolific USB to Serial Comm Port**) under the **Ports (Com & LPT)**

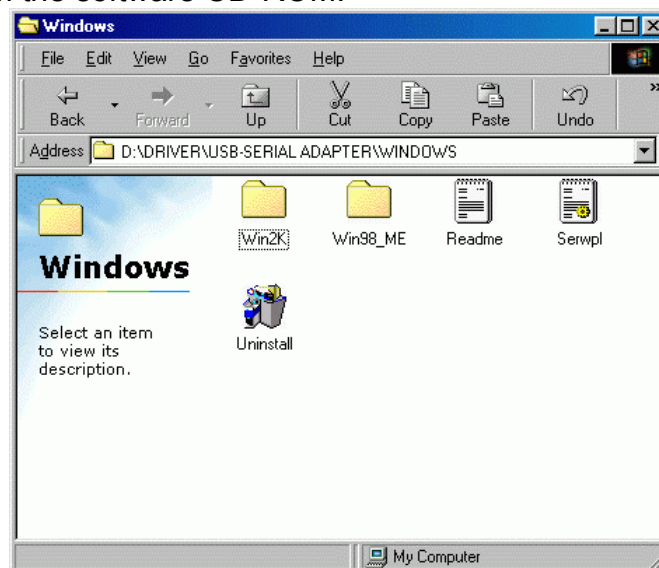


5.6 Windows® 2000 Driver Un-Installation

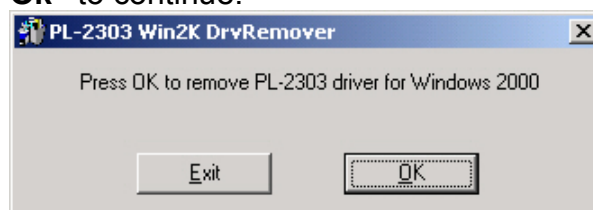
If you want to remove the USB-Serial adapter driver, you can uninstall it by following the steps below:

5.6.1 Unplug the USB-Serial adapter from your PC.

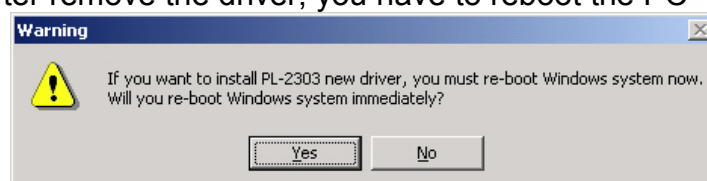
5.6.2 Run the **D:\Driver\USB-SERIAL ADAPTER\WINDOWS\ Uninstall.exe** from the software CD-ROM.



5.6.3 Click “Ok” to continue.



5.6.4 After remove the driver, you have to reboot the PC



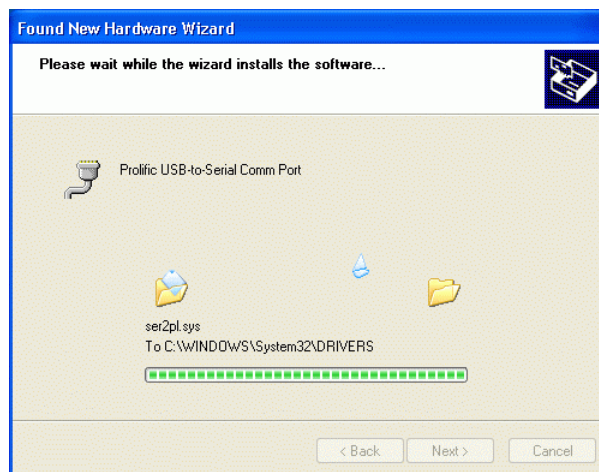
5.7 Windows® XP Driver Installation

Follow the steps below to install Windows® XP driver:

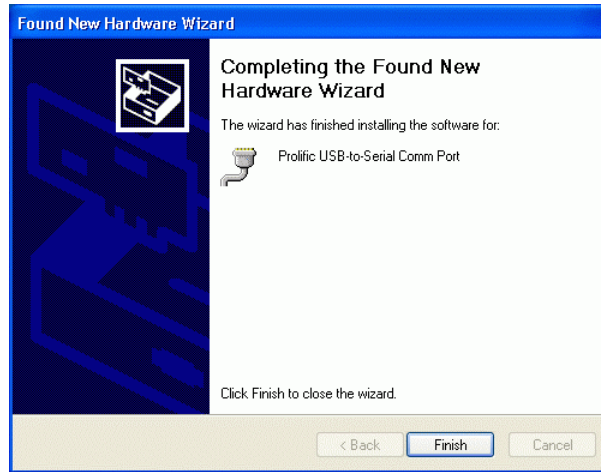
- 5.7.1 Power on your computer and make sure that the USB port is enabled and working properly.
- 5.7.2 Insert the driver of **USB-Serial adapter** into CD-ROM drive and plug in the **USB-Serial adapter** into the USB port, the “**Found New Hardware Wizard**” will to assist you to setting up the new device.
- 5.7.3 Select the “**Install the software automatically (Recommended)**” then click “**Next**” to continue.



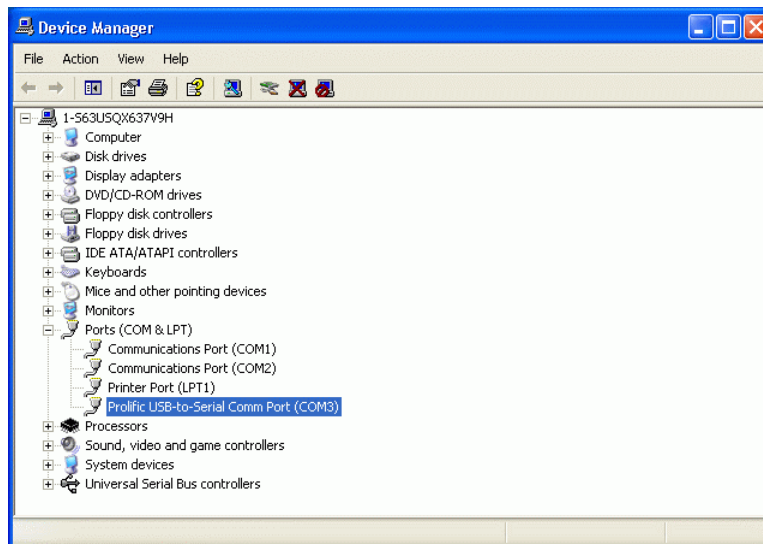
- 5.7.4 The windows will auto detect the device (**prolific USB-to-Serial Comm Port**) and install the driver into your system.



- 5.7.5 As the windows appear as below, click the “**Finish**” to continue.



5.7.6 After install the driver, you can see a new **Prolific USB-to-Serial Comm Port (COM3)** under the **Ports (COM&LPT)**.

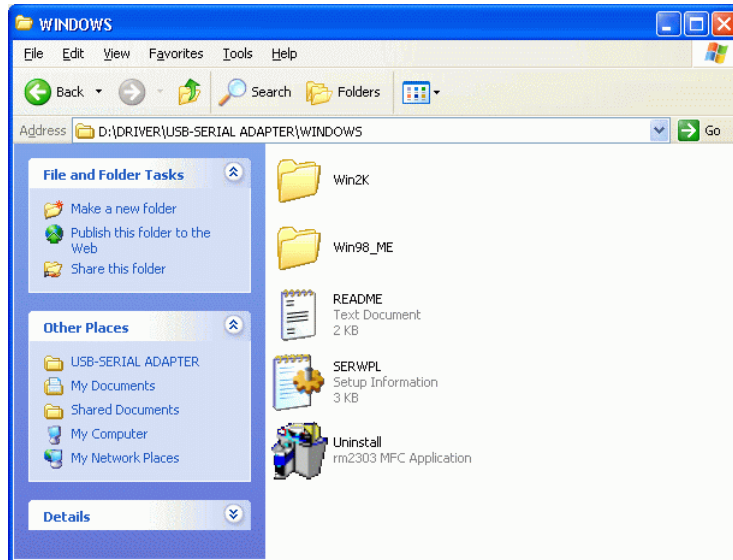


5.8 Windows® XP Driver Un-Installation

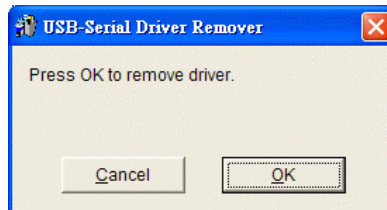
If you want to remove the USB-Serial adapter driver, you can uninstall it by following the steps below:

5.8.1 Unplug the USB-Serial adapter from your PC.

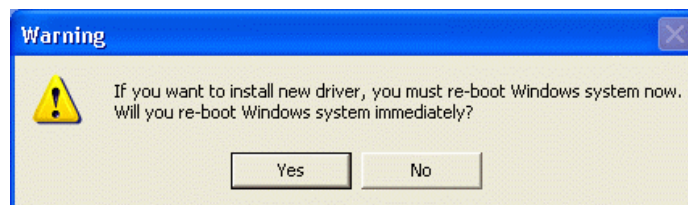
5.8.2 Run the **D:\Driver\USB-SERIAL ADAPTER\WINDOWS\ Uninstall.exe** from the software CD-ROM, and then reboot the PC.



5.8.3 Click “OK” to remove the driver.



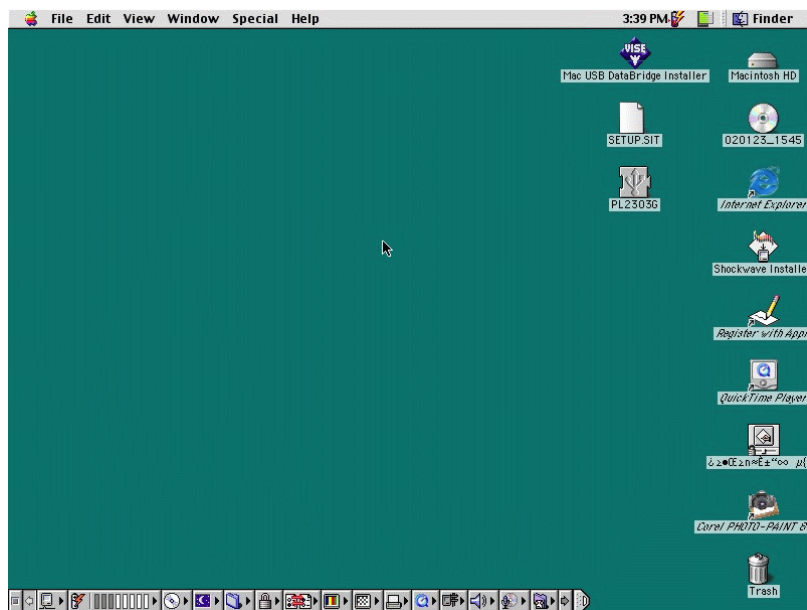
5.8.4 After remove the driver click “YES” to reboot your PC.



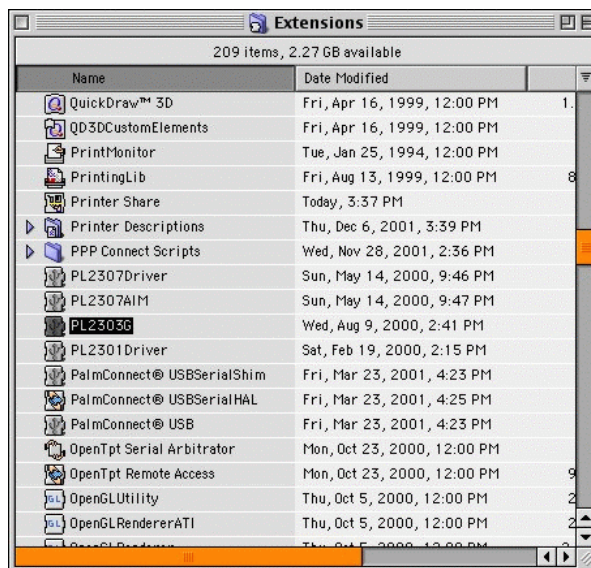
5.9 MAC Driver Installation

Follow the steps below to install driver of USB-Serial adapter:

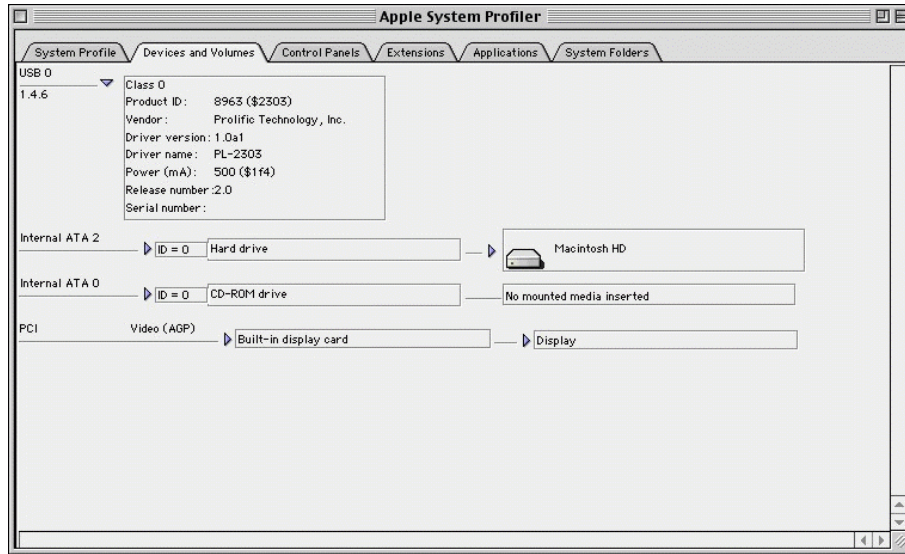
- 5.9.1 Power on your computer and make sure that the USB port is enabled and working properly.
- 5.9.2 Insert the USB-Serial adapter software driver into the CD-ROM drive and copy the “**D:\Driver\USB-SERIAL ADAPTER\MAC\SETUP.SIT**” to the desktop from the CD-ROM.
- 5.9.3 Run the SETUP.SIT from the desktop, it will auto run the program and create a **PL-2303G** on desktop.



- 5.9.4 Copy the “**PL-2303G**” to the “**System Folder**”-“**Extensions**”.



- 5.9.5 To make sure that your computer can use the device correctly, you have to check the “**Apple System Profiler**”-“**Device and Volumes**”. It will show the USB Device



5.10 MAC Driver Un-Installation

If you want to remove the USB-Serial adapter driver, you can uninstall it by following the steps below:

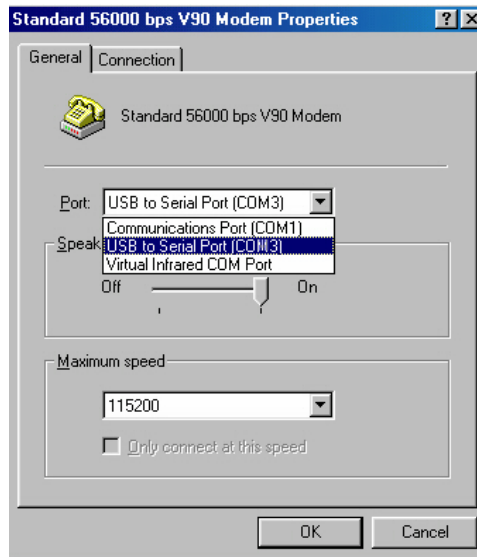
5.10.1 Unplug the USB-Serial adapter from your MAC machine.

5.10.2 Remove the “**PL-2303G**” into the trash and then reboot your MAC machine.

6 Setting Up the RS232 Serial Device

Follow the steps below to connect your RS232 Serial Device (i.e.: Modem) to the USB port of your PC:

- 6.1 Turn off your Modem. Plug the DB 9 connector of the USB-Serial adapter into your Modem. Connect the other end of the USB-Serial adapter to an USB type A to type B cable. Turn on the Modem afterwards.
- 6.2 Turn on your computer and plug in the USB connector of the USB-Serial adapter into the USB port.
- 6.3 If you have already installed a Modem device before, click Start, Settings, and Modems. Open Modems Properties, select the Modem, and click Properties. In General tab, please change the **Port** value to **USB to Serial Port (COM3)**.
- 6.4 After finishing these processes, you can use USB to Serial Bridge Cable to connect RS232 Serial 56K FAX Modem and execute the Dial-up function to connect Internet, and send the FAX with the FAX software (i.e.: Microsoft FAX) properly.



7 Trouble Shooting

If you can successful install the driver but cannot use the USB-Serial Adapter with connect the other device:

Go to the **Control Panel-System-Device Manager** and check the **COM (COM&LPT)**, if you cannot see this item:

Please check the **BIOS setting** → **I/O configure setting** → **Onboard serial port 1**, choose the setting is enabled and choose the value. Then return to the windows and check it again.

Go to the **Control Panel** → **Add New Hardware**, following the step and choose the hardware from the list, select the **Ports(COM&LPT)** and following the step to install the driver that is needed. **(In this process you may need to put the WINDOWS CD into the CD-ROM drive.)**

8 Disclaimer

Information in this document is subject to change without notice. The manufacturer does not make any representations or warranties (implied or otherwise) regarding the accuracy and completeness of this document and shall in no event be liable for any loss of profit or any other commercial damage, including but not limited to special, incidental, consequential, or other damages.

No part of this document may be reproduced or transmitted in any form by any means, electronic or mechanical, including photocopying, recording or information recording and retrieval systems without the express written permission of the manufacturer.

All brand names and product names used in this document are trademarks, or registered trademarks of their respective holders.

Einführung

Herzlichen Glückwunsch zum Kauf Ihres LINDY USB-Seriell Konverters! Dieser Konverter ermöglicht es Ihnen serielle Geräte auf einfache Weise an den Computer über USB anzuschliessen.

Der Adapter ermöglicht über den USB Bus den Anschluss der meisten serielle Geräte wie z.B. Handys mit serieller Schnittstelle, Digitalkameras, Modems, ISDN Terminaladapter seriell, u.v.a.m.

Lieferumfang

Zusammen mit dem LINDY USB-Seriell Konverters erhalten Sie ein USB Anschlusskabel und eine CD mit Treibern sowie diesem Handbuch.

Systemvoraussetzungen

PC

- IBM® PC 486DX4-100 MHz CPU oder höher oder kompatibles System
- Freier USB 1.1 oder 2.0 Port
- CD-ROM Laufwerk
- Windows® 98, ME, 2000 oder XP

MAC

- G3 oder G4 oder I-MAC
- Freier USB Port
- CD-ROM Laufwerk
- MAC OS 8.6 bis 9.2 (nicht OS X – Stand 11/02)

Installation der Treiber

Folgen Sie bei der ersten Installation des LINDY USB Seriell Adapter dem unten angegebenen Procedere (Sie finden eine ausführliche bebilderte Anleitung mit Screenshots im englischen Handbuch am Anfang dieses Handbuches):

- 1) Schalten Sie den Computer ein und vergewissern Sie sich, daß der USB-Port ordnungsgemäß funktioniert. Falls Sie nicht sicher sind, überprüfen Sie den Eintrag zu "USB Controller" im Gerätemanager (Start [] Einstellungen [] Systemsteuerung [] System [] Gerätemanager).
- 2) Schließen Sie den USB Seriell Adapter am USB-Port an. Windows wird ein unbekanntes Gerät identifizieren und startet automatisch den Hardwareassistenten um Ihnen bei der Einrichtung des neuen Geräts zu helfen.
- 3) Legen Sie die LINDY Treiber-CD in das CD-Laufwerk ein und klicken Sie auf **Weiter** um fortzufahren

Für Nutzer von **WINDOWS 98**:

- a) Wählen Sie **Nach dem besten Treiber für das Gerät suchen** und klicken Sie auf **Weiter**.
- b) Wechseln Sie in den Ordner Ihres CD-Laufwerks und klicken Sie auf **Weiter**.
- c) Überprüfen Sie den Pfad den Windows anbietet. Klicken Sie auf **Weiter**.
- d) Windows wird den Treiber finden (**serwpl.inf**) und das **Prolific USB-to-Serial Comm Port** anzeigen. Klicken Sie auf **Weiter** um fortzufahren bis die Installation beendet ist.

Deutsches Benutzerhandbuch

Für Nutzer von **WINDOWS ME**:

- e) Wählen Sie **Nach dem besten Treiber für das Gerät suchen** und klicken Sie auf **Weiter**.
- f) Wechseln Sie in den Ordner Ihres CD-Laufwerks und klicken Sie auf **Weiter**.
- g) Überprüfen Sie den Pfad den Windows anbietet. Klicken Sie auf **Weiter**.
Windows wird den Treiber finden (**serwpl.inf**) und das **Prolific USB-to-Serial Comm Port** anzeigen. Klicken Sie auf **Weiter** um fortzufahren bis die Installation beendet ist.

Für Nutzer von **WINDOWS 2000**

- a) Wählen Sie **Nach einem passenden Treiber für das Gerät suchen (empfohlen)** und klicken Sie auf **Weiter**.
- b) Klicken Sie auf **CD-ROM-Laufwerk** und klicken Sie auf **Weiter**.
- c) WINDOWS durchsucht die CD und findet den Treiber. Sollten dies nicht die Treiber mit der Bezeichnung „....(**Windows 2000**)“ sondern „...win98me...“ sein so klicken Sie auf das Kästchen „EINEN DER ANDEREN TREIBER INSTALLIEREN“ und WEITER. Wählen Sie aus der folgenden Liste den korrekten Treiber für Ihr Betriebssystem „....(**Windows 2000**)“ aus.
- d) Klicken Sie auf **Weiter** um fortzufahren bis die Installation beendet ist.

Für Nutzer von **XP**:

- a) Wählen Sie **Software automatisch installieren (empfohlen)** und klicken Sie auf **Weiter**.
- b) Klicken Sie auf **CD-ROM-Laufwerk** und klicken Sie auf **Weiter**.
- c) WINDOWS durchsucht die CD und findet den Treiber.
- d) Klicken Sie auf **Weiter** um fortzufahren bis die Installation beendet ist.

De-Installation

Um die Treiber wieder aus Ihrem System zu entfernen, gehen Sie bitte folgendermaßen vor:

- 1) Ziehen Sie den USB-Stecker des USB Seriell Adapter aus der USB-Schnittstelle Ihres Rechners.
- 2) Starten Sie **Uninstall.exe** im Ordner **D:\Driver\USB-Serial Adapter\Windows** der Installations-CD
- 3) Klicken Sie auf **OK** um fortzufahren.
- 4) Nachdem der Treiber entfernt wurde, muss der Rechner neu gestartet werden.

LINDY-Elektronik GmbH behält sich das Recht vor, Informationen dieses Handbuchs an den Stand der Technik anzupassen. LINDY-Elektronik GmbH übernimmt keinerlei Gewähr hinsichtlich der Vollständigkeit und Richtigkeit der hier gemachten Angaben. Es wird keinerlei Haftung übernommen für Schäden, die aus der Benutzung dieses Produktes entstehen.

Alle Rechte an diesem Handbuch liegen bei der LINDY-Elektronik GmbH. Wiedergabe und Nachdruck auch von Teilen ist nicht gestattet.

Manuel en français

Introduction

Merci pour l'achat de notre convertisseur USB Série LINDY! Ce convertisseur permet de connecter un périphérique Série sur le port USB de votre ordinateur.

La plupart des périphériques comme les téléphones mobiles avec interface série, les appareils photo numériques, les modems, les terminaux série ISDN, etc.. se connectent sur cet adaptateur.

Livraison

Vous trouverez en plus de l'adaptateur USB Série LINDY un câble USB et un CD de pilotes.

Configuration minimale

PC

- IBM® PC 486DX4-100 MHz CPU ou plus
- Port USB 1.1 ou 2.0 disponible
- Lecteur CD-ROM
- Windows® 98, ME, 2000 ou XP

MAC

- G3 ou G4 ou I-MAC
- Port USB disponible
- Lecteur CD-ROM
- MAC OS 8.6 à 9.2 (pas OS X – depuis le 11/02)

Installation du pilote

Veuillez simplement suivre l'ordre d'installation comme ci-dessous (vous trouverez une aide par des illustrations dans la partie anglaise du manuel).

- 1) Allumez votre ordinateur. Assurez-vous tout d'abord que le port USB de votre ordinateur fonctionne correctement.
- 2) Connectez ensuite l'adaptateur USB Série au port USB. Windows va trouver un périphérique et vous demandera un emplacement de pilote.
- 3) Insérez le CD de pilotes LINDY dans votre lecteur et cliquez sur **Suivant**

Pour les utilisateurs de **WINDOWS 98**:

- a) Validez **Rechercher le meilleur pilote pour ce périphérique** et cliquez sur **Suivant**.
- b) Sélectionnez votre lecteur CD et cliquez sur **Suivant**.
- c) Vérifiez que Windows prenne bien en compte le répertoire. Cliquez sur **Suivant**.
- d) Windows va ainsi trouver un pilote adapté (**serwpl.inf**) et installera **Prolific USB-to-Serial Comm Port**. Cliquez sur **Suivant** jusqu'à la fin de l'installation.

Manuale in Italiano

Pour les utilisateurs de **WINDOWS ME**:

- e) Validez par **Rechercher le meilleur pilote pour ce périphérique** et cliquez sur **Suivant**.
- f) Recherchez le répertoire d'accès à partir du lecteur CD et cliquez sur **Suivant**.
- g) Vérifiez le chemin que Windows affiche. Cliquez sur **Suivant**.
Windows va trouver le pilote (**serwpl.inf**) et affichera **Prolific USB-to-Serial Comm Port**. Cliquez sur **Suivant** jusqu'à la fin de l'installation.

Pour les utilisateurs de **WINDOWS 2000**

- a) Validez l'option **Recherchez un pilote pour ce périphérique** et cliquez sur **Suivant**.
- b) Cliquez sur **Lecteur CD-ROM** et cliquez sur **Suivant**.
- c) WINDOWS recherchera sur le CD et trouvera le pilote. Validez sur la liste qui s'affiche le bon pilote correspondant à votre système d'exploitation,,....(**Windows 2000**)“.
- d) Cliquez sur **Suivant** et terminez l'installation.

Pour les utilisateurs de **Windows XP**:

- a) Validez par **Installer le logiciel automatiquement (recommandé)** et cliquez sur **Suivant**.
- b) Cliquez sur **Lecteur CD-ROM** et cliquez sur **Suivant**.
- c) WINDOWS recherche sur le CD et trouve le pilote.
- d) Cliquez sur **Suivant** et terminez l'installation.

Désinstallation

Si vous souhaitez effacer le pilote de votre système, effectuez les opérations suivantes:

- 1) Retirez l'adaptateur USB Série de votre ordinateur.
- 2) Lancez le programme **Uninstall.exe** dans le répertoire **D:\Driver\USB-Serial Adapter\Windows** du CD d'Installation
- 3) Cliquez sur **OK** pour continuer.
- 4) Après que le pilote ait été désinstallé, redémarrez votre ordinateur.

Manuale in Italiano

Introduzione

Congratulazioni per aver acquistato l'adattatore USB-Seriale Lindy. Questo prodotto permette di connettere semplicemente delle periferiche con interfacce seriali attraverso la porta USB..

Grazie alla connessione USB potrete utilizzare queste periferiche con il vantaggio di un funzionamento completamente Plug&Play oltre alla possibilità di collegamento a caldo della periferica. Questo adattatore è l'ideale per connettere Telefoni cellulari, Telecamere Digitali, Modem o ISDN Terminal Adapter con un transfer rate fino a 120Kbps. Inoltre con questo prodotto non dovrete effettuare upgrade del firmware delle periferiche che collegate grazie alla assoluta trasparenza dell'interfaccia USB che apporta solo minime modifiche alla comunicazione fra PC e periferiche.

Contenuto della confezione:

- Hardware: Adattatore USB-Seriale , cavo USB da tipo A a tipo B.
- Manuale e CD-ROM con i Driver

Caratteristiche del prodotto

- Conforme alle specifiche USB Rev. 1.1
- Supporto dell'interfaccia seriale RS232.
- Velocità di trasferimento fino a 120Kbps.
- Supporta le funzioni di Remote Wake-up e Power Management

Configurazione richiesta:

PC

- IBM® PC 486DX4-100 MHz CPU o superiori (e sistemi compatibili)
- Un porta USB disponibile
- CD-ROM drive
- Windows® 98, ME, 2000 or XP

MAC

- Power con CPU G3 o G4 e I-MAC
- Un porta USB disponibile
- CD-ROM drive
- Mac OS da 8.6 a 9.X

Installazione dei Driver

Windows® 98

Seguite la seguente procedura per installare l'adattatore:

- Accendete il PC e controllate che le porte USB siano abilitate e funzionanti
- Collegate l'adattatore **USB-Seriale** ad una porta USB e avviate l'installazione guidata di nuovo Hardware per assistervi nella configurazione. Fate click su **Avanti** per continuare.
- Selezionate la ricerca automatica del driver più adatto (la voce raccomandata) e fate click su **Avanti**.
- Inserite il CD-ROM dei driver e indicate come percorso specifico dove ricercare il driver "**D:\Driver\USB-SERIAL ADAPTER\Windows**" (D: rappresenta la lettera del CD-ROM)
- Windows® troverà il driver (**SERWPL.INF**) e mostrerà **Prolific USB-to-Serial Comm Port**. Fate click su "**Avanti**" per continuare l'installazione.
- Fate click su **Avanti** per continuare e lasciate che Windows® copi i files necessari sul vostro Hard Disk.
- Quando Windows® avrà terminato l'installazione del software fate click su "**Fine**".
- Dopo l'installazione controllate in **Control Pannello di controllo -> Sistema -> Gestione Periferiche** che sia presente la nuova porta seriale (dovreste vedere la voce **USB to Serial Port (COM3)** nella sezione **Porte (COM & LPT)** e **Prolific USB-to-serial Com Port** sotto **Universal Serial Bus Controller**).

Windows® ME

Seguite la seguente procedura per installare l'adattatore:

- Accendete il PC e controllate che le porte USB siano abilitate e funzionanti
- Inserite il CD-ROM dei driver e collegate l'adattatore alla porta USB del PC
- Quando appare la finestra di installazione guidata selezionate l'opzione per la ricerca automatica del miglior driver (quella raccomandata) e poi fate click su "**Avanti**" per continuare.
- Windows® troverà il driver (**SERWPL.INF**) e mostrerà di aver trovato **Prolific USB-to-Serial Comm Port**.
- Quando l'installazione sarà conclusa fate click su "**Fine**".
- Dopo l'installazione controllate in **Control Pannello di controllo -> Sistema -> Gestione Periferiche** che sia presente la nuova porta seriale (dovreste vedere la voce **USB to Serial Port (COM3)** nella sezione **Porte (COM & LPT)** e **Prolific USB-to-serial Com Port** sotto **Universal Serial Bus Controller**).

Windows® 2000

Seguite la seguente procedura per installare l'adattatore:

- Accendete il PC e controllate che le porte USB siano abilitate e funzionanti
- Inserite il CD-ROM dei driver e collegate l'adattatore alla porta USB del PC
- Quando appare la finestra di installazione guidata selezionate l'opzione per la ricerca automatica del miglior driver (quella raccomandata) e poi fate click su **"Avanti"** per continuare.
- Selezionate "Specifica il percorso" e premete "Avanti per continuare"
- Windows® troverà il driver (**SERWPL.INF**). Fate click su **"Avanti"** per continuare.
- Fate click su **"Fine"** per terminare la procedura.
- Dopo l'installazione controllate in **Control Pannello di controllo -> Sistema -> Gestione Periferiche** che sia presente la nuova porta seriale (dovreste vedere la voce **USB to Serial Port (COM3)** nella sezione **Porte (COM & LPT)** e **Prolific USB-to-serial Com Port** sotto **Universal Serial Bus Controller**).

Windows® XP

Seguite la seguente procedura per installare l'adattatore:

- Accendete il PC e controllate che le porte USB siano abilitate e funzionanti
- Inserite il CD-ROM dei driver e collegate l'adattatore alla porta USB del PC
- Quando appare la finestra di installazione guidata selezionate l'opzione per l'installazione automatica del miglior driver (quella raccomandata) e poi fate click su **"Avanti"** per continuare.
- Windows rileverà automaticamente la periferica (**prolific USB-to-Serial Comm Port**) e installerà il driver.
- Fate click su Fine per terminare l'installazione.
- Dopo l'installazione sarà visibile una nuova porta seriale (**Prolific USB-to-Serial Comm Port (COM3)**) nella sezione **Porte (COM&LPT)** della finestra di gestione delle periferiche.
-

Disinstallazione dei Driver

Se volete rimuovere l'adattatore USB-Seriale dovete semplicemente:

- Disconnettere l'adattatore dal PC
- Eseguite l'utility che trovate in **D:\Driver\USB-SERIAL ADAPTER\WINDOWS\Uninstall.exe** sul CD-Rom dei driver.
- Fate Click su **"Ok"** per continuare.
- Riavviate il PC

Manuale in Italiano

MAC

Seguite la seguente procedura per installare l'adattatore:

- Accendete il vostro MAC e controllate che le porte USB siano abilitate e funzionanti
- Inserite il CD dei driver e copiate il file "**D:\Driver\USB-SERIAL ADAPTER\MAC\SETUP.SIT**" (D: rappresenta la lettera associate al lettore di CD-ROM) sul Desktop.
- Avviate il file SETUP.SIT dal desktop, questo avvierà automaticamente il programma e creerà un **PL-2303G** sul desktop.
- Copiate il "**PL-2303G**" nel "**System Folder**"-"**Extensions**".

Disinstallazione dei driver per MAC

Se desiderate disinstallare l'adattatore è sufficiente

- Disconnettere l'adattatore dalla porta USB del MAC.
- Spostate "**PL-2303G**" nel cestino e riavviate il vostro

Configurazione delle periferiche RS232

Seguite la seguente procedura:

- Spegnete il modem. Inserite il connettore seriale dell'adattatore nel modem. Connette l'altro lato dell'adattatore al cavo USB A-B e accendete il modem.
- Accendete il PC e collegate l'altro capo del cavo USB A-B al PC stesso.
- Se avete già installato un modem prima fate click su Start->Impostazioni->Modem.
- Aprite le proprietà del modem e cambiate la porta a cui è connesso sostituendola con quella del convertitore (per esempio **USB to Serial Port (COM3)**)
- Dopo questa operazione potete utilizzare normalmente il modem per connettervi ad Internet, mandare FAX, ecc...

Risoluzione dei problemi

Se siete riusciti ad installare il driver ma non riuscite a utilizzare le periferiche connesse ad esso provate a controllare in Pannello di Controllo->Sistema->gestione periferiche se la porta COM relativa all'adattatore compare nella sezione Porte.

Se non lo trovate controllate nel BIOS che le porte seriali On-Board siano abilitate e tornate in windows per controllare se dopo questa operazione la porta è visibile nel pannello di controllo se non lo ho installatela (sarà necessario il CD di Windows).

Avvertenze

Tutte le informazioni contenute in questo manuale possono essere cambiate senza preavviso. Il fornitore non si assume alcuna responsabilità (implicita o contraria) riguardo il contenuto di questo documento ed in nessun caso sarà responsabile di qualsiasi perdita di profitto o altri danni commerciali od altri. Nessuna parte di questo documento può essere riprodotta o trasmessa in qualsiasi forma e mezzo, elettronico o meccanico, incluse fotocopie o registrazioni senza previa autorizzazione scritta da parte del fornitore. Tutti i nomi di case produttrici e produttori presenti in questo documento sono trademarks, o trademarks registrati da parte dei proprietari

Radio Frequency Energy, Certifications

Shielded cables must be used with this equipment to maintain compliance with radio frequency energy emission regulations and ensure a suitably high level of immunity to electromagnetic disturbances.

European EMC directive 89/336/EEC

CE statement

This equipment complies with the requirement for CE mentioned in the European Directive and Standards EN55022 and EN55024.

This equipment has been tested and found to comply with the limits (for a class B computing device) in accordance with the specifications in the European Standard EN55022. These limits are designed to provide reasonable protection against harmful interference. This equipment generates, uses and can radiate radio frequency energy and if not installed and used in accordance with the instructions may cause harmful interference to radio or television reception. However, there is no guarantee that harmful interference will not occur in a particular installation. If this equipment does cause interference to radio or television reception, which can be determined by turning the equipment on and off, the user is encouraged to correct the interference with one or more of the following measures: (a) Reorient or relocate the receiving antenna. (b) Increase the separation between the equipment and the receiver. (c) Connect the equipment to an outlet on a circuit different from that to which the receiver is connected. (d) Consult the supplier or an experienced radio / TV technician for help.

FCC Compliance Statement (United States)

This equipment has been tested and found to comply with part 15 of FCC rules.

Operation is subject to the following two conditions:

- (1) This device may not cause harmful interference.
- (2) This device must accept any interference received. Including interference that may cause undesired operation.

Canadian Department of Communications RFI statement

This equipment does not exceed the class B limits for radio noise emissions from digital apparatus set out in the radio interference regulations of the Canadian Department of Communications.

Le présent appareil numérique n'émet pas de bruits radioélectriques dépassant les limites applicables aux appareils numériques de la classe A prescrites dans le règlement sur le brouillage radioélectriques publié par le ministère des Communications du Canada

