



RIGHT ANGLE CORDLESS DRILL

18 VOLT

Model 92383

OPERATING INSTRUCTIONS



3491 Mission Oaks Blvd., Camarillo, CA 93011
Visit our Web site at: <http://www.harborfreight.com>

**TO PREVENT SERIOUS INJURY,
READ AND UNDERSTAND ALL WARNINGS
AND INSTRUCTIONS BEFORE USE.**

Copyright© 2004 by Harbor Freight Tools®. All rights reserved. No portion of this manual or any artwork contained herein may be reproduced in any shape or form without the express written consent of Harbor Freight Tools.

For technical questions, or replacement parts, please call 1-800-444-3353.

PRODUCT SPECIFICATIONS

Item	Description
Electrical Requirements	Power Source: 18 VDC Rechargeable Battery. Battery Type: NI-MH 1300 MAH, 15 Cell, 1.2V. Initial Charge Time: 5 Hours. Subsequent Charge Times: 3 Hours. Charger Input: 120 VAC / 60 Hz. Charger Output: 24 VDC / 400 MA. Motor: 0-900 RPM No Load / Reversible.
Chuck Type	3/8" Keyless.
Accessories	2" Double End Bits (Qty. 2). AC/DC Charger/Base.
Weight	4.60 Pounds.

UNPACKING

When unpacking, check to make sure all the parts shown on the **Parts List on page 11** are included. If any parts are missing or broken, please call Harbor Freight Tools at the number shown on the cover of this manual as soon as possible.

SAVE THIS MANUAL

You will need this manual for the safety warnings and precautions, assembly, operating, inspection, maintenance and cleaning procedures, parts list and assembly diagram. Keep your invoice with this manual. Write the invoice number on the inside of the front cover. Keep this manual and invoice in a safe and dry place for future reference.

GENERAL SAFETY RULES



WARNING!

READ AND UNDERSTAND ALL INSTRUCTIONS
Failure to follow all instructions listed below may result in
electric shock, fire, and/or serious injury.
SAVE THESE INSTRUCTIONS

WORK AREA

1. **Keep your work area clean and well lit.** Cluttered benches and dark areas invite accidents.
2. **Do not operate power tools in explosive atmospheres, such as in the presence of flammable liquids, gases, or dust.** Power tools create sparks which may ignite the dust or fumes.

3. **Keep bystanders, children, and visitors away while operating a power tool.** Distractions can cause you to lose control. Protect others in the work area from debris such as chips and sparks. Provide barriers or shields as needed.

ELECTRICAL SAFETY

1. **Avoid body contact with grounded surfaces such as pipes, radiators, ranges, and refrigerators.** There is an increased risk of electric shock if your body is grounded.
2. **Do not expose power tools to rain or wet conditions.** Water entering a power tool will increase the risk of electric shock.

PERSONAL SAFETY

1. **Stay alert. Watch what you are doing, and use common sense when operating a power tool. Do not use a power tool while tired or under the influence of drugs, alcohol, or medication.** A moment of inattention while operating power tools may result in serious personal injury.
2. **Dress properly. Do not wear loose clothing or jewelry. Contain long hair. Keep your hair, clothing, and gloves away from moving parts.** Loose clothes, jewelry, or long hair can be caught in moving parts.
3. **Avoid accidental starting. Be sure the Power Switch (20) is released before plugging in.** Carrying power tools with your finger on the Power Switch, or plugging in power tools with the Power Switch depressed, invites accidents.
4. **Remove adjusting keys or wrenches before turning the power tool on.** A wrench or a key that is left attached to a rotating part of the power tool may result in personal injury.
5. **Do not overreach. Keep proper footing and balance at all times.** Proper footing and balance enables better control of the power tool in unexpected situations.
6. **Use safety equipment.** Always wear ANSI approved safety glasses underneath a full face safety shield. Dust mask, non-skid safety shoes, hard hat, or hearing protection must be used for appropriate conditions.
7. **Use clamps (not included) or other practical ways to secure and support the workpiece to a stable platform.** Holding the work by hand or against your body is unstable and may lead to loss of control.

TOOL USE AND CARE

1. **Do not force the tool. Use the correct tool for your application.** The correct tool will do the job better and safer at the rate for which it is designed.
2. **Do not use the power tool if the Power Switch (20) does not turn it on or off.** Any tool that cannot be controlled with the Power Switch is dangerous and must be replaced.
3. **Disconnect the power tool from its Battery Pack (27) before making any adjustments, changing accessories, or storing the tool.** Such preventive safety measures reduce the risk of starting the tool accidentally.
4. **Store idle tools out of reach of children and other untrained persons.** Tools are dangerous in the hands of untrained users.
5. **Maintain tools with care. Keep drill bits sharp and clean.** Properly maintained tools with sharp drill bits are less likely to bind and are easier to control. Do not use a damaged tool. Tag damaged tools "Do not use" until repaired.
6. **Check for misalignment or binding of moving parts, breakage of parts, and any other condition that may affect the tool's operation. If damaged, have the tool serviced before using.** Many accidents are caused by poorly maintained tools.
7. **Use only accessories that are recommended by the manufacturer for your model.** Accessories that may be suitable for one tool may become hazardous when used on another tool.

SERVICE




1. **Tool service must be performed only by qualified repair personnel.** Service or maintenance performed by unqualified personnel could result in a risk of injury.
2. **When servicing a tool, use only identical replacement parts. Follow instructions in the "Inspection, Maintenance, And Cleaning" section of this manual.** Use of unauthorized parts or failure to follow maintenance instructions may create a risk of electric shock or injury.

SPECIFIC SAFETY RULES

1. **Maintain a safe working environment.** Keep the work area well lit. Make sure there is adequate surrounding workspace. Always keep the work area free of


obstructions, grease, oil, trash, and other debris. Do not use the Cordless Drill in areas near flammable chemicals, dusts, and vapors. Do not use this product in a damp or wet location.

2. **Maintain labels and nameplates on this product.** These carry important information. If unreadable or missing, contact Harbor Freight Tools for a replacement.
3. **When using the Cordless Drill, always maintain a firm grip on the tool with both hands.**
4. **Hold the tool by its insulated gripping surfaces when performing an operation where the Cordless Drill may contact hidden wiring.** Contact with a “live” wire will make exposed metal parts of the Cordless Drill “live” and shock the operator.
5. **Do not use the Cordless Drill or Charger (41) if it has been dropped, damaged, left outdoors, or immersed in liquid.**
6. **To avoid electrical shock, do not handle the Charger (41), its Power Cord Plug, or the Cordless Drill with wet hands.**
7. **Keep the Handle of the Cordless Drill dry, clean, and free from oil and grease.**
8. **Always turn off the Cordless Drill and unplug the Charger (41) from its electrical outlet before changing accessories or performing any inspection, maintenance, or cleaning procedures.**
9. **Avoid unintentional starting.** Make sure you are prepared to begin work before turning on the Cordless Drill.
10. **To avoid electrical shock, do not pull or carry the Charger (41) by its Power Cord.**
11. **Never leave the Charger (41) unattended when it is plugged into an electrical outlet.** Make sure to unplug it from its electrical outlet before leaving.
12. **Proper Battery Pack Care:** Battery Pack (27) leakage may occur under extreme usage or temperature conditions. If Battery Pack fluid comes in contact with skin, wash with soap and water and rinse with lemon juice and vinegar. If the fluid comes into contact with the eyes, flush with water for several minutes and contact a doctor immediately. Never burn the Battery Pack, as it can explode in a fire. Do not charge the Cordless Drill with a leaking Battery Pack. Contact local solid waste authorities for instructions on correct disposal or recycling of the Battery Pack.

13. **Always switch to a fresh Battery Pack (27) when tool performance begins to diminish.** Severe heat is most destructive to a Battery Pack. The more heat generated, the faster the Battery Pack loses power. A Battery Pack that gets too hot can be permanently damaged. Never over-discharge a Battery Pack by using the tool while tool performance is decreasing. Never attempt to discharge a tool's Battery Pack by continuing to pull the tool's Power Switch (20). When tool performance begins to diminish, stop the tool, re-charge the Battery Pack, and use the fresh Battery Pack for optimal performance.
14.  **WARNING!** Some dust created by power sanding, sawing, grinding, drilling, and other construction activities, contain chemicals known (to the State of California) to cause cancer, birth defects or other reproductive harm. Some examples of these chemicals are: lead from lead-based paints, crystalline silica from bricks and cement or other masonry products, arsenic and chromium from chemically treated lumber. Your risk from these exposures varies, depending on how often you do this type of work. To reduce your exposure to these chemicals: work in a well ventilated area, and work with approved safety equipment, such as those dust masks that are specially designed to filter out microscopic particles. *(California Health & Safety Code 25249.5, et seq.)*
15.  **WARNING!** People with pacemakers should consult their physician(s) before using this product. Electromagnetic fields in close proximity to a heart pacemaker could cause interference or failure of the pacemaker. In addition, people with pacemakers should adhere to the following: Avoid operating power tools alone. Don't use a power tool with the power switch locked on. If powered via a power cord be certain that the tool is properly grounded. A ground fault interrupt (GFCI) system is also a good precaution. This inexpensive device is a good safety measure because it prevents a sustained electrical shock. Properly maintain and inspect all tools before use to avoid electrical shock.
16.  **WARNING!** The warnings, precautions, and instructions discussed in this manual cannot cover all possible conditions and situations that may occur. The operator must understand that common sense and caution are factors which cannot be built into this product, but must be supplied by the operator.

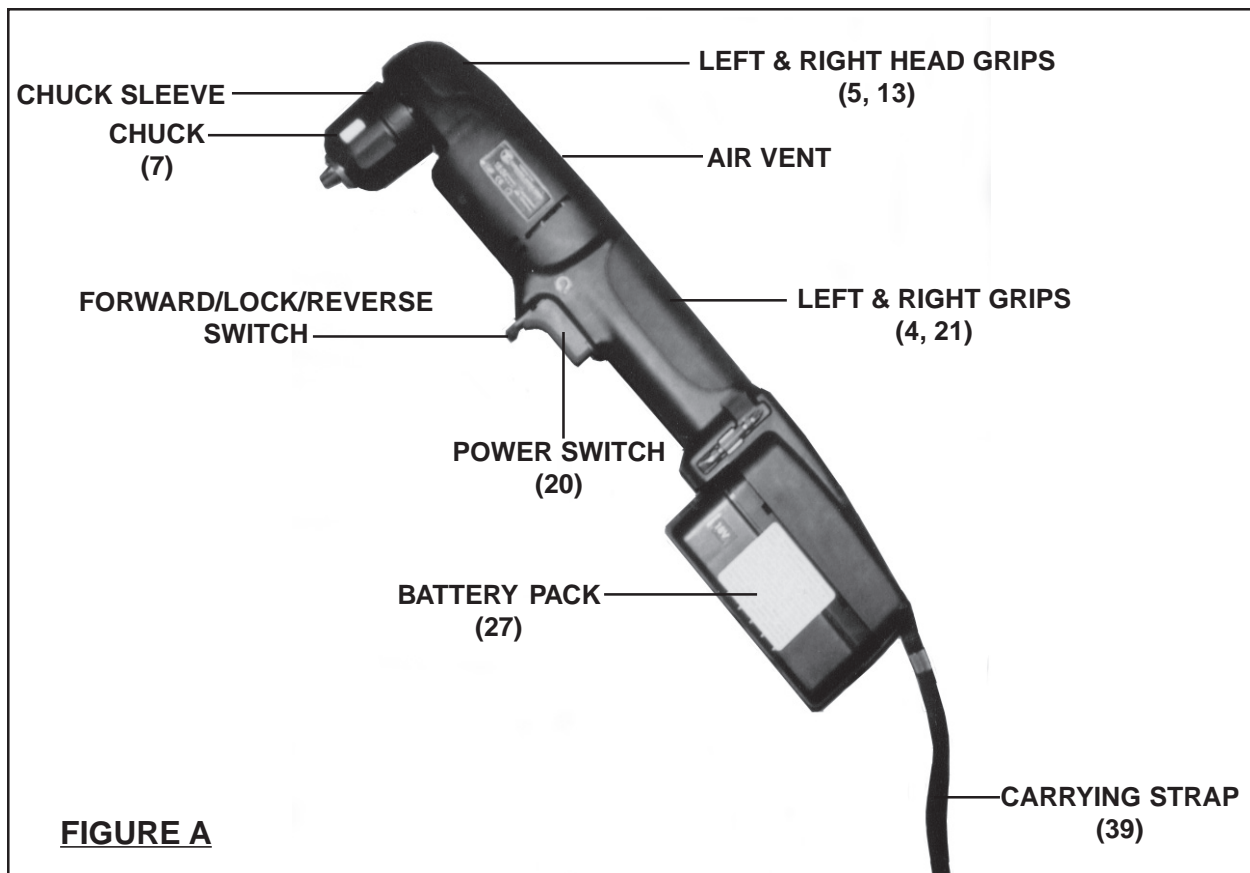
PRODUCT FEATURES

NOTE: For additional information regarding the parts listed in the following pages, refer to the **Assembly Diagram on page 11.**

1.  **WARNING!** Always make sure the Power Switch (20) of the Cordless Drill

is in its “**OFF**” position, the Battery Pack (27) is removed from the Cordless Drill, and the Charger (41) is unplugged from its electrical outlet prior to making any adjustments to the tool. **(See Figure A below, and Figure B, next page.)**

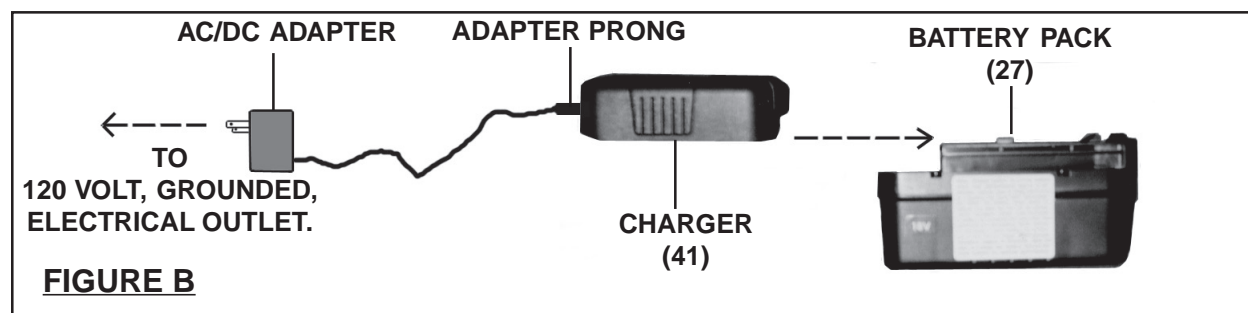
2. **Chuck (7):** Accepts up to 3/8” *shank* diameter Drill Bits (not included). To install a Drill Bit, with the Cordless Drill pointed away from your body, hold the Chuck Sleeve firmly in place and turn the Chuck *clockwise*. Insert the shank of a Drill Bit all the way into the Chuck. While holding the Chuck Sleeve in place, turn the Chuck *counterclockwise* to lock the Drill Bit in place. **(See Figure A.)**
3. **Power Switch (20):** The Power Switch is operated *manually* simply by squeezing the Power Switch to turn on the Cordless Drill and releasing pressure on the Power Switch to turn off the Cordless Drill. **(See Figure A.)**
4. **Forward/Lock/Reverse Lever:** The Forward/Lock/Reverse Lever allows you to change the rotational direction of the Cordless Drill and *also* to lock the Power Switch (20) in its “OFF” position. To change the rotational direction, make sure the Cordless Drill is at a complete stop. While holding the Cordless Drill in your hand, move the Lever to the *left* for a *clockwise* rotation. For a *counterclockwise* rotation, move the Lever to the *right*. To lock the Power Switch in its “OFF” position, move the Lever midway between the left and right settings. **(See Figure A.)**



5. **Left & Right Grips (4, 21) / Left & Right Head Grips (5, 13) :** The Left & Right Grips *and* Left & Right Head Grips allow for safer and easier operation of the Cordless Drill. **IMPORTANT:** When operating the Cordless Drill, hold the tool with both hands by its Grips *only*. Do not cover the Vent of the tool with your fingers or hands. Doing so will cause the Motor to overheat, causing damage to the tool. (See Figure A.)

TO CHARGE THE CORDLESS DRILL

1. **NOTE:** The Battery Pack (27) requires charging. The first charge requires **5 hours** charge time prior to using the Cordless Drill. (See Figure B.)
2. When the Battery Pack (27) requires re-charging, a **3 hour** fast charge allows the tool to operate at full power. Do not re-charge the Battery Pack longer than 5 hours, as damage to the Battery Pack and/or Charger (41) will occur. (See Figure B.)
3. Make sure the Power Switch (20) on the Cordless Drill is in its “**OFF**” position. Slide the Battery Pack (27) off the Handle of the Cordless Drill. Insert the Adapter Prong into the Charger (41). Next, slide the Charger onto the Battery Pack. Then, plug the AC/DC Adapter into the nearest 120 volt, grounded, electrical outlet. (See Figure B.)
4. When illuminated, the **RED** light on the Charger (41) indicates charging is in process. When illuminated, the **GREEN** light on the Charger indicates the Battery Pack (27) is fully charged and should be removed from the Charger. (See Figure B.)




5. **NOTE:** While charging, the Battery Pack (27) and Charger (41) may become warm to the touch. This is normal, and does not indicate a problem. (See Figure B.)
6. Once the Battery Pack (27) is fully charged, disconnect the AC/DC Adapter from the electrical outlet. Then, disconnect the Charger (41) from the Battery Pack. (See Figure B.)

OPERATING INSTRUCTIONS

1. When installing Drill Bits, make sure the Battery Pack (27) is removed from the Cordless Drill to avoid accidental starting. Then, insert and lock in place a Drill Bit in the Chuck (7) of the Cordless Drill.
2. If necessary, adjust the Forward/Lock/Reverse Lever. **(See Figure A.)**
3. Whenever possible, secure the workpiece in place, using a vise or clamps (not included).
4. When drilling in light gauge metal or wood, use a wooden block to back up the material to prevent damage to the workpiece.
5. Mark the center of the hole to be drilled with a center punch to give a Drill Bit a start and to prevent it from “walking”.
6. Lubricate the Drill Bit with cutting oil when drilling iron or steel. Use a coolant when drilling non-ferrous metals such as copper, brass, or aluminum.
7. Insert the fully charged Battery Pack (27) into the Handle of the Cordless Drill. **(See Figure A.)**
8. Make sure to hold the Cordless Drill firmly by the Left & Right Grips (4, 21) and Left & Right Head Grips (5, 13) with both hands, as torque from the Motor will cause the tool to twist.
9. Turn the Cordless Drill on, using the Power Switch (20).
10. **Do not drill deeper than necessary into walls or other areas where you cannot identify any possible hazards such as electric wires and cables behind the drilling surface.** Drill only as deep as necessary.
11. To reduce jamming as the Drill Bit breaks through the workpiece, decrease the drilling pressure when the point of the Drill Bit breaks through the workpiece.
12. When you have drilled the hole, remove the Drill Bit from the hole while the Cordless Drill is still running. This prevents the Drill Bit from getting caught in the hole and causing damage.
13. Release the Power Switch (20) to stop the Cordless Drill. Then, remove the Battery Pack (27) and Drill Bit from the Cordless Drill.

INSPECTION, MAINTENANCE, AND CLEANING

Note: Servicing of this tool should only be done by a qualified service technician.

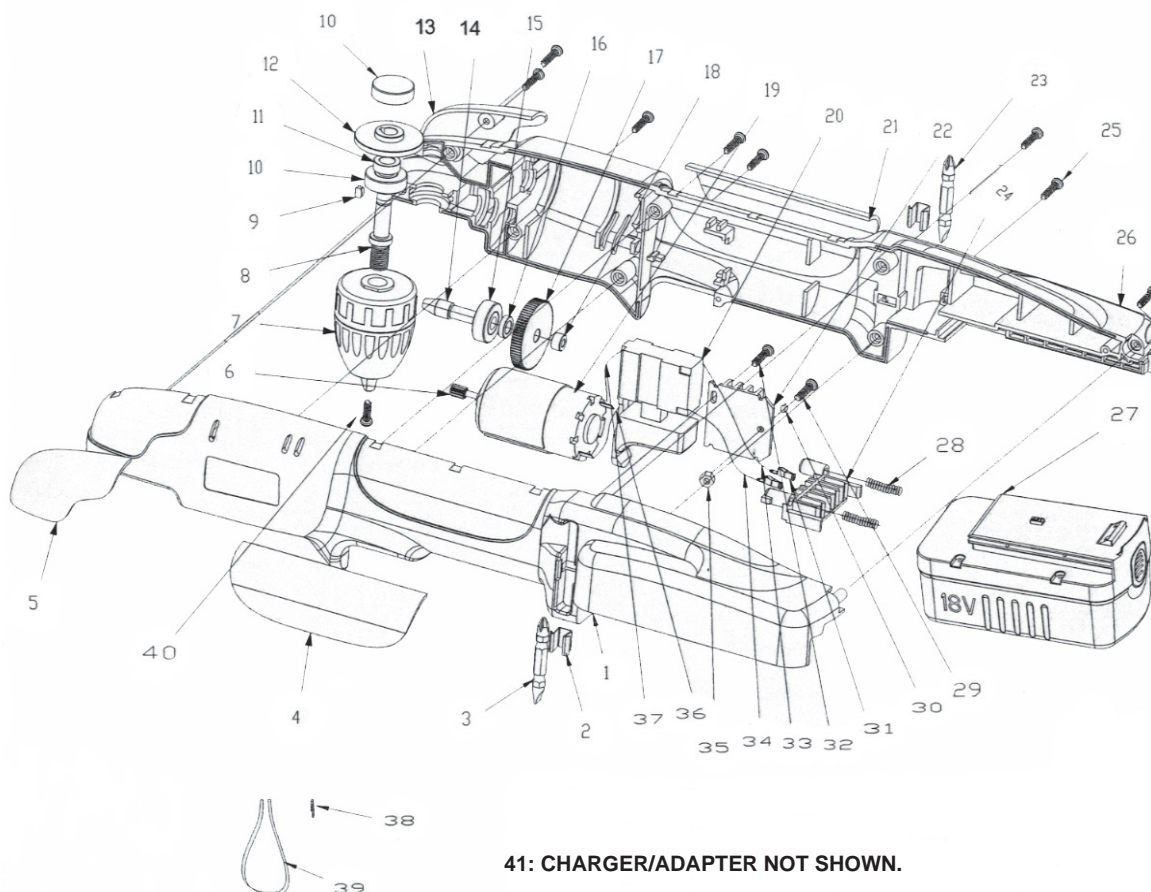
1.  **WARNING!** Always turn the Power Switch (20) to its “OFF” position, and unplug the Charger (41) from its electrical outlet before performing any inspection, maintenance, or cleaning.
2. **BEFORE EACH USE**, inspect the general condition of the Cordless Drill. Check for misalignment or binding of moving parts, cracked or broken parts, leaking Battery Pack, damaged Charger wiring, chipped or broken Drill Bits, and any other condition that may affect its safe operation. If abnormal noise or vibration occurs, have the problem corrected before further use.
Do not use damaged equipment.
3. **Battery Pack (27) precautions:** Never burn Batteries, as they can explode in a fire. Do not charge leaking Batteries. Only a qualified service technician should perform maintenance on the Battery Pack. Contact local solid waste authorities for instructions on correct disposal or recycling of the Battery Pack.
4. **DAILY:** With a soft brush or cloth, remove all dirt and debris from the Cordless Drill. Do not immerse the Cordless Drill in any liquids.
5. **When storing:** Always remove the Battery Pack (27) from the Cordless Drill. Keep the Cordless Drill and its accessories in a clean, dry location and out of childrens reach.

PLEASE READ THE FOLLOWING CAREFULLY

THE MANUFACTURER AND/OR DISTRIBUTOR HAS PROVIDED THE PARTS LIST AND ASSEMBLY DIAGRAM IN THIS MANUAL AS A REFERENCE TOOL ONLY. NEITHER THE MANUFACTURER OR DISTRIBUTOR MAKES ANY REPRESENTATION OR WARRANTY OF ANY KIND TO THE BUYER THAT HE OR SHE IS QUALIFIED TO MAKE ANY REPAIRS TO THE PRODUCT, OR THAT HE OR SHE IS QUALIFIED TO REPLACE ANY PARTS OF THE PRODUCT. IN FACT, THE MANUFACTURER AND/OR DISTRIBUTOR EXPRESSLY STATES THAT ALL REPAIRS AND PARTS REPLACEMENTS SHOULD BE UNDERTAKEN BY CERTIFIED AND LICENSED TECHNICIANS, AND NOT BY THE BUYER. THE BUYER ASSUMES ALL RISK AND LIABILITY ARISING OUT OF HIS OR HER REPAIRS TO THE ORIGINAL PRODUCT OR REPLACEMENT PARTS THERETO, OR ARISING OUT OF HIS OR HER INSTALLATION OF REPLACEMENT PARTS THERETO.

PARTS LIST & ASSEMBLY DIAGRAM

Part #	Description	Qty.	Part #	Description	Qty.
1	Left Housing	1	22	Vent	1
2	Bit Clamp	2	23	Double Bit	1
3	Double Bit	1	24	Case	1
4	Left Grip	1	25	Screw (M8 x 14)	8
5	Left Head Grip	1	26	Right Housing	1
6	Motor Gear	1	27	18V Battery Pack	1
7	Chuck	1	28	Spring	2
8	Shaft	1	29	Screw (M8 x 8)	1
9	Bond	1	30	Spring	1
10	Bearing (608)	2	31	Socket	2
11	Bearing	1	32	Screw (M6 x 6)	1
12	Taper (AFC Gear)	1	33	Red Wire	1
13	Right Head Grip	1	34	Black Wire	1
14	Taper Gear Shaft	1	35	Nut (M8)	1
15	Bearing (627)	1	36	Red Wire	1
16	Washer	1	37	Black Wire	1
17	Cutting Gear	1	38	Strap Clasp	1
18	Oil Bearing	1	39	Carrying Strap	1
19	Motor	1	40	Left Screw M5 x 22	1
20	Power Switch	1	41	Charger/Adapter (not shown)	1
21	Right Grip	1			



NOTE:

Some parts are listed and shown for illustration purposes only,
and are not available individually as replacement parts.