

Battlemaster Rifle 6mm BB AEG Rifle OWNER'S MANUAL

READ ALL INSTRUCTIONS AND WARNINGS IN THIS MANUAL BEFORE USING THIS AIRSOFT GUN

Crosman Corporation
7629 Routes 5 & 20
Bloomfield, NY 14469
www.crosman.com
1-800-724-7486

If you have any questions regarding your airsoft gun, please contact Crosman at 1-800-724-7486, 585-657-6161 or www.crosman.com.

52005-515

READ AND UNDERSTAND THIS ENTIRE MANUAL BEFORE USING THIS AIRSOFT GUN. AND REMEMBER, THIS AIRSOFT GUN IS NOT A TOY. TREAT IT WITH THE SAME RESPECT YOU WOULD A FIREARM.

WARNING: THIS IS NOT A TOY. ADULT SUPERVISION REQUIRED. MISUSE OR CARELESS USE MAY CAUSE SERIOUS INJURY, ESPECIALLY TO THE EYE. EYE PROTECTION MUST BE USED BY THE USER AND ANY PERSON WITHIN RANGE. MAY BE DANGEROUS UP TO 100 YARDS (91.44 METERS). READ OWNER'S MANUAL BEFORE USING.

YOU AND OTHERS WITH YOU SHOULD ALWAYS WEAR SHOOTING GLASSES TO PROTECT YOUR EYES.
READ ALL INSTRUCTIONS BEFORE USING.
BUYER AND USER HAVE THE DUTY TO OBEY ALL LAWS ABOUT THE USE AND OWNERSHIP OF THIS AIRSOFT GUN.

WARNING: DO NOT BRANDISH OR DISPLAY THIS AIRSOFT GUN IN PUBLIC — IT MAY CONFUSE PEOPLE AND MAY BE A CRIME. POLICE AND OTHERS MAY THINK IT IS A FIREARM. DO NOT CHANGE THE COLORATION AND MARKINGS TO MAKE IT LOOK MORE LIKE A FIREARM. THAT IS DANGEROUS AND MAY BE A CRIME.

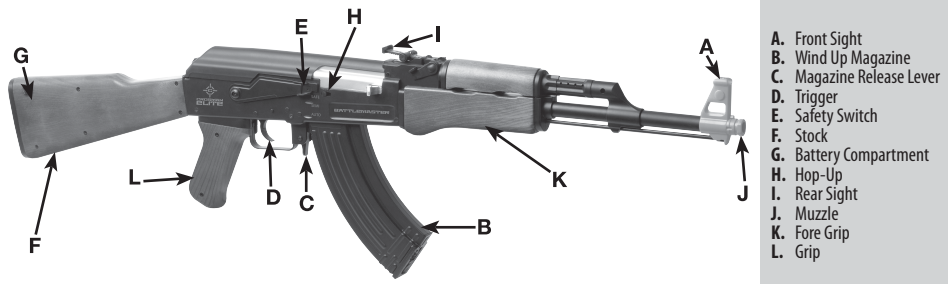
WARNING: THIS PRODUCT CONTAINS ONE OR MORE CHEMICALS KNOWN TO THE STATE OF CALIFORNIA TO CAUSE CANCER AND BIRTH DEFECTS (OR OTHER REPRODUCTIVE HARM).

1. SAFETY FIRST

- ALWAYS treat the AIRSOFT GUN as though it is loaded and ready to fire.
- ALWAYS treat AIRSOFT GUNS with the same respect you would a firearm.
- ALWAYS store the AIRSOFT GUN unloaded.
- ALWAYS store the AIRSOFT GUN away from children.
- ALWAYS aim in a SAFE DIRECTION.
- ALWAYS keep the muzzle of the AIRSOFT GUN pointed in a SAFE DIRECTION.
- ALWAYS keep your finger off the trigger and out of the trigger guard until ready to shoot.
- ALWAYS keep the AIRSOFT GUN "ON SAFE" until you are ready to shoot (see section 3A).
- ALWAYS check to see if the AIRSOFT GUN is "ON SAFE" (see section 3A) and unloaded when receiving it from another person.
- ALWAYS have you and others wear shooting glasses to protect your eyes.
- ALWAYS wear shooting glasses over eye glasses if your prescription or reading glasses are not safety glasses.
- ALWAYS place the backstop in a location that will be safe should the backstop fail.
- ALWAYS check your backstop for wear before and after each use. All backstops are subject to wear and will eventually fail. Replace your backstop if the surface is worn or damaged, or if a ricochet occurs.
- ALWAYS use the proper size BB in your AIRSOFT GUN. Check the markings on your AIRSOFT GUN to verify the BB size is 6mm.
- NEVER reuse ammunition.
- NEVER shoot at hard surfaces or at the surface of water. The BB may bounce off or ricochet and hit someone or something you had not intended to hit.
- NEVER attempt to disassemble or tamper with your AIRSOFT GUN. Use an Authorized Service Station.
- Modifying the function of your AIRSOFT GUN in any way, may be unsafe and will void your warranty.
- NEVER point the AIRSOFT GUN at any person or at anything you do not intend to shoot.

2. LEARNING THE PARTS OF YOUR AIRSOFT GUN

Learning the names of the parts of your new airsoft gun will help you to understand your owner's manual. Use this manual to increase your enjoyment of this airsoft gun.



3. OPERATING THE SAFETY

Locate the safety on the right side of the airsoft gun. (Fig. 2)

A. TO PUT THE AIRSOFT GUN "ON SAFE".

- Push lever so that the lever is lined up with the "SAFE".

Like all mechanical devices, an airsoft gun safety can fail. Even when the safety is "ON SAFE", you should continue to handle the airsoft gun safely.

B. TO TAKE THE AIRSOFT GUN "OFF SAFE"

WARNING: KEEP THE AIRSOFT GUN IN THE "ON SAFE" POSITION UNTIL YOU ARE READY TO SHOOT. THEN TURN THE SAFETY TO THE "OFF SAFE" POSITION.

- Locate the safety on right side of the airsoft gun (Fig. 2).

NOTE: This airsoft gun fires in semi or full auto-mode. Full auto means it will continue to fire plastic BBs as long as you hold the trigger. Semi-auto means you will have to pull the trigger each time you want to fire a shot.

- Push the lever to "SEMI" for semi-auto mode.
- Push the lever to "AUTO" for full auto mode.
- The airsoft gun is "OFF SAFE" and ready to fire when pointing to either "semi" or "auto."

NEVER point the airsoft gun at any person. **NEVER** point the airsoft gun at anything you do not intend to shoot.

4. CHARGING, LOADING AND REMOVING THE BATTERY

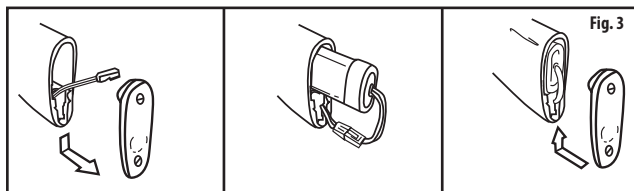
A. CHARGING THE BATTERY

NOTE: The battery charging time is 4-6 hours prior to initial use. To prolong battery life and maintain the best shooting performance rest the gun for 5-10 minutes after firing about 500 rounds. For optimum performance completely use up the battery before recharging. DO NOT OVERCHARGE THE BATTERY. UNPLUG THE BATTERY CHARGER WHEN NOT IN USE.

- Use only the battery and charger provided with your product.
- Plug the male connector on the battery into the female electrical connector on the battery charger.
- Plug the charger in to a standard 110 v outlet.

B. LOADING THE BATTERY

- Make sure the airsoft gun is "ON SAFE" (Fig. 2) and is UNLOADED.
- Point the airsoft gun in a SAFE DIRECTION.
- Remove the butt plate by pushing it upward.
- Pull out the connector.
- Insert the battery into the stock with the connector facing out.
- Plug the battery into the connector.
- Slide the battery and connectors into the stock and fold the wire in an "S" shape.
- Replace the butt plate by lining it up on the stock and pushing down into the locked position.



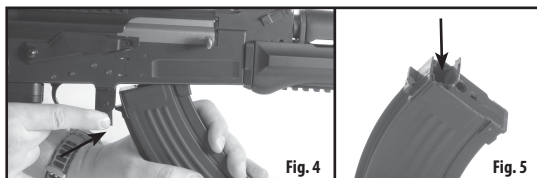
5. LOADING AND UNLOADING PLASTIC BBs

A. LOADING

Only use 6 mm plastic BBs in this airsoft gun. Use of any other ammunition can cause injury to you or damage to the airsoft gun. We recommend using Crosman, Duty Calls, or GameFace BBs. Use of any other ammunition can cause injury to you or damage to the airsoft gun.

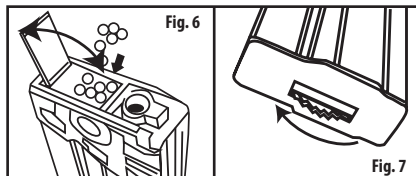
WARNING: MAKE SURE THE AIRSOFT GUN IS "ON SAFE" (FIG. 2).

- Point the airsoft gun in a SAFE DIRECTION.
- While supporting the BB magazine, push the magazine release lever forward and remove the magazine.
- Flip open the magazine cap door.
- Insert 6 mm plastic BBs.
- Close the magazine cap door.
- Insert the loaded magazine back into the airsoft gun.
- Rotate the wind up wheel to draw plastic BBs up into the ready tube. Wind the wheel 50 to 75 turns for optimum performance. Stop winding when BBs appear in the ready tube (BB opening).



B. UNLOADING PLASTIC BBs

- Make sure the airsoft gun is "ON SAFE" (Fig. 2).
- Point the airsoft gun in a SAFE DIRECTION.
- While supporting the BB magazine, push the magazine release lever forward and remove the magazine.
- Flip open the loading door behind the ready tube
- Pour out BBs.
- To release the BBs in the ready tube, point the clip down in a safe direction and push back and hold the BB retainer button.



NOTE: BBs will release rapidly.

- Rotate the wind up wheel to draw BBs into the ready tube.
- Repeat the above steps until all the BBs are out of the magazine.
- Close the magazine cap.

Never assume that because the airsoft gun no longer fires a BB and/or the loading chamber is removed, that a BB is not lodged in the barrel. Always treat the airsoft gun as though it is loaded and with the same respect you would a firearm.

WARNING: EVEN THOUGH YOU GO THROUGH THE UNLOADING PROCEDURE, CONTINUE TO TREAT THE AIRSOFT GUN AS THOUGH IT WERE LOADED. DO NOT POINT AT ANYTHING YOU DO NOT INTEND TO SHOOT.

6. USING THE HOP-UP MODE

Your airsoft gun is manufactured with an adjustable hop-up system. The purpose of this system is to change the spin on the BB as it leaves the muzzle, allowing you to adapt your shot for different distances.

- Hop-up is located on the right side of the gun receiver.
- Slide the hop-up adjustment right for more spin, and left for less spin.

7. ADJUSTING THE REAR SIGHT

- The rear sight is adjustable for elevation. (Fig. 9)
- Press both sides of the Elevation Adjustment Lock to move the Leaf Spring Rear Sight.
- Slide the lock forward to move the point of impact up.
- Slide the lock backward to move the point of impact down.
- When you are sure of your target and backstop, and the area around the target is clear, take the airsoft gun "OFF SAFE" (section 2) aim and pull the trigger to fire.



8. FIRING SAFELY

A. FIRING SAFELY

- You and others with you should always wear eye protection designed for airsoft to protect your eyes.
- Always point your airsoft gun in a SAFE DIRECTION.
- Do not shoot at hard surfaces or at the surface of water. The plastic BBs may bounce off or ricochet and hit someone or something you had not intended to hit.
- DO NOT re-use plastic BBs because they could possibly cause damage to your airsoft gun.
- Your airsoft gun is designed for target shooting and is suited for both indoor and outdoor use. Always remember to place your target carefully. THINK about what you will hit if you miss the target.

9. MAINTAINING YOUR AIRSOFT GUN

- DO NOT MODIFY OR ALTER YOUR AIRSOFT GUN. Attempts to modify the airsoft gun in any way inconsistent with this manual may make your airsoft gun unsafe to use, cause serious injury, especially to the eye and will void the warranty.
- If you drop your airsoft gun, visually check to see that it works properly before you use it again.
- If anything seems changed, like a shorter or weaker trigger pull, this may mean worn out or broken parts. Call Crosman customer service for assistance before using your airsoft gun again.

A. HOW TO CLEAN THE MAGAZINE

- Remove magazine
- Wipe down outside of magazine
- Spray small amount of Crosman Nitro Lubricant oil into BB tube
- Replace magazine

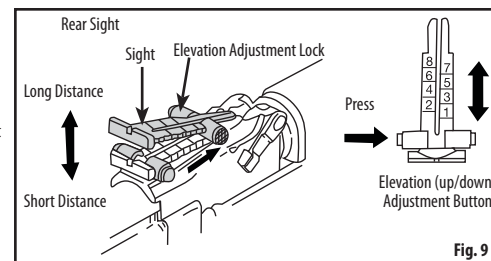
B. TO CLEAN THE AIRSOFT GUN BARREL

- Spray a cleaning patch with Crosman Nitro Lubricant oil.
- With patch on rod, insert it into barrel to clean
- Swab barrel 3-4 times
- Repeat swabbing procedure with a dry patch
- Barrel is clean when patches come out clean after dry swabbing.

C. CLEARING A JAM

Never look down the end of barrel to see if a jam has been cleared.

- Make sure the airsoft gun is "ON SAFE" and pointed in a SAFE DIRECTION.
- Remove magazine.
- Insert the tapered end of the cleaning rod into the barrel.
- CAREFULLY and slowly apply more pressure until you push the BB out of the breech.
- Reinstall the magazine and test gun.



SPECIFICATIONS

Mechanism	Electronic	Velocity	Up to 200 fps with .12g BBs
Sights Front	Fixed Post	Length	34.5 inches
Sights Rear	Adjustable	Safety	Lever
Caliber/Ammunition	6 mm Plastic BB	Weight	approximately 3 pounds
Capacity	430 BBs		

PERFORMANCE: Many factors can affect velocity, including brand of projectile, type of projectile and barrel condition.

DO NOT RETURN THIS PRODUCT TO THE STORE.

Our customer service representatives will help. You can get answers to frequently asked questions at www.crosman.com or you can contact us directly at (1-800-724-7486)

CUSTOMER SERVICE

If your airsoft gun is not functioning, we recommend that you call Crosman Corporation Customer service at 1-800-724-7486 or 585-657-6161. (International customers should contact their distributor.) DO NOT ATTEMPT TO DISASSEMBLE IT! If you take it apart you probably will not be able to reassemble it correctly. Crosman assumes no warranty responsibility under such circumstances.

For optimum performance use Crosman ammunition only. Using other than Crosman, Gameface, Marine Airsoft or Duty Calls branded ammunition may cause your product to malfunction and may void your warranty.

LIMITED 30 DAY WARRANTY

This product is warranted to the retail consumer for 30 days from date of retail purchase against defects in material and workmanship and is transferable.

WHAT IS COVERED

Replacement parts and labor. Transportation charges to consumer for repaired product.

WHAT IS NOT COVERED

Transportation charges to Crosman for product. Damages caused by abuse, modification or failure to perform normal maintenance. Any other expense. CONSEQUENTIAL DAMAGES, INCIDENTAL DAMAGES, OR INCIDENTAL EXPENSES, INCLUDING DAMAGE TO PROPERTY. SOME STATES DO NOT ALLOW THE EXCLUSION OR LIMITATION OF INCIDENTAL OR CONSEQUENTIAL DAMAGES, SO THE ABOVE LIMITATION OR EXCLUSION MAY NOT APPLY TO YOU.

WARRANTY CLAIMS

USA Customers: Attach your name, address, description of problem, phone number and copy of sales receipt to product. Package and return to Crosman Corporation, 7629 Routes 5 and 20, Bloomfield, NY 14469.

International Customers: Please return product to your nearest distributor. If you do not know your distributor, please call 585-657-6161 and ask for our International Department for assistance.

IMPLIED WARRANTIES

ANY IMPLIED WARRANTIES, INCLUDING THE IMPLIED WARRANTIES OF MERCHANTABILITY AND FITNESS FOR A PARTICULAR PURPOSE, ARE LIMITED IN DURATION TO 30 DAYS FROM DATE OF RETAIL PURCHASE.

SOME STATES DO NOT ALLOW LIMITATIONS ON HOW LONG AN IMPLIED WARRANTY LASTS, SO THE ABOVE LIMITATIONS MAY NOT APPLY TO YOU.

To the extent any provision of this warranty is prohibited by federal, state, or municipal law which cannot be preempted, it shall not be applicable. This warranty gives you specific legal rights, and you may also have other rights which vary from state to state.

CROSMAN, DUTY CALLS and GAMEFACE are trademarks of Crosman Corporation in the United States.

