

We have moved - Effective 2/7/04

**Combi**

Combi USA, Inc.

1962 Hwy 160 W, Ste. 100  
Fort Mill, SC 29708

1-800-99-COMBI M-F 8:30am-5pm EST  
803-548-3663 FAX

New SC  
Sales Tax  
is 5%



# Manual

# Melody Bouncer

9100 Series

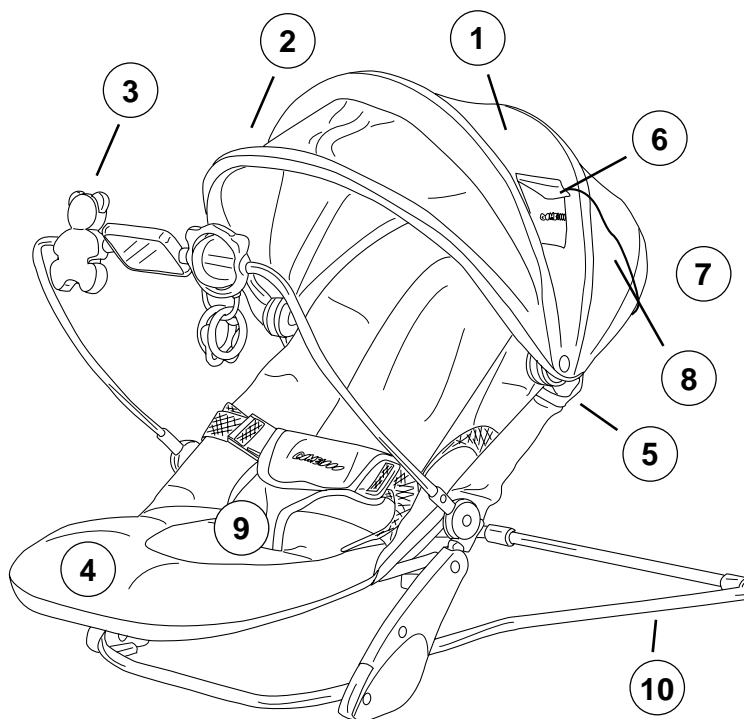
Record the following information for quick reference.

Date Purchased: \_\_\_\_\_ Model Number: 9100-0

Thank you for purchasing a COMBI® Melody Bouncer. It has been designed with both you and your baby in mind. Should you need assistance with your COMBI® Melody Bouncer, call us toll free at 1-800-992-6624 from anywhere in the U.S. Our Customer Service Department hours are Monday through Friday 10:00 a.m. - 5:00 p.m. Central Time. Our Customer Service Representatives are trained to give you assistance with questions you may have concerning assembly, parts, or use. Please have the model number ready when you call. Should you loan/give/sell this Melody Bouncer to anyone else, be sure to supply this instruction manual as well. Adult assembly is required. The illustrations in this instruction manual are for reference and ease of understanding only. The actual item may differ from the diagrams.

## Name of Parts

- 1 Canopy
- 2 Adjustable Visor
- 3 Toy Bar
- 4 Seat Cushion
- 5 Canopy Holder
- 6 Speaker Pocket (One on each side of canopy)
- 7 Player Pocket (On the backside of seat)
- 8 Speaker Wire Guides (One on each side of canopy)
- 9 3-Point Waist Belt
- 10 Stay Bar



## ⚠ WARNINGS

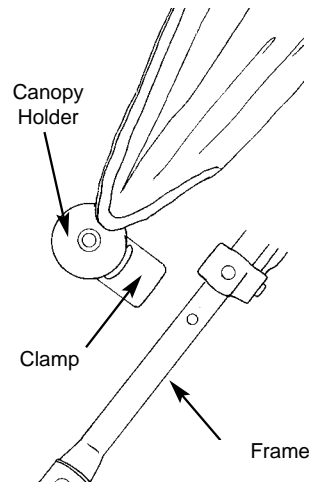
***If the Melody Bouncer is not used in compliance with these instructions, serious injury may result.***

- Never leave child unattended.
- Avoid serious injury from falling or sliding out. Always use seat belt.
- Always use on the floor. Never use on any elevated surface or near steps or stairs.
- Never use the Melody Bouncer as a baby carrier.
- Do not allow your child to stand in or on the Melody Bouncer.
- Never lift the Melody Bouncer using the toy bar as a handle.
- Maximum weight - 20 lbs.
- Never use the Melody Bouncer as a car seat.

# ! WARNINGS *Never the lift Melody Bouncer using the toy bar.*

## Attaching the Canopy

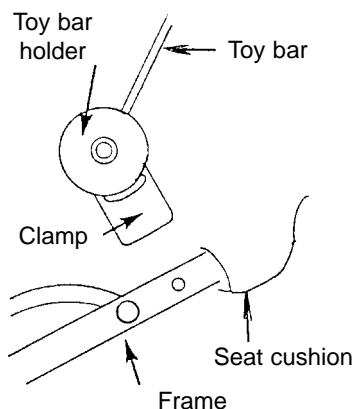
1. To install the canopy place the notch in the clamp of the canopy holder into the hole on the frame. (Located above the waist belt).
2. Open the canopy by pulling on the visor with one hand until fully opened.
3. Before folding the Melody Bouncer, grasp the visor and push down to close the canopy.



### To remove the Canopy

Grasp the canopy holders on each side, one at a time, and pull out from the frame.

## Installing the Toy Bar



# ! WARNING

*Never lift the Melody Bouncer using the toy bar.*

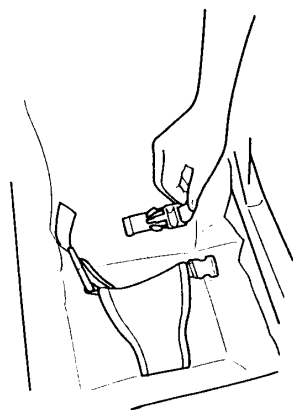
To install the toy bar, place the notch in the clamp of the toy bar holder into the hole on the front tube (located above the seat).

*Note:*

*Clamp must be positioned behind the toy bar holder in order to insert into the front tube.*

## Using and Adjusting the Seat Belt

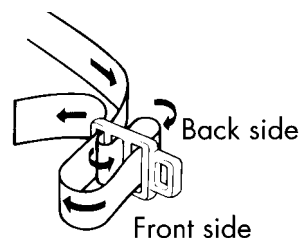
# ! WARNING *Avoid serious injury from falling or sliding out. Always use seat belt.*



Place the crotch belt between baby's legs and fasten the waist belt buckles together.

After adjusting the waist belt, make sure it is fastened securely.

To adjust the waist belt, loosen the slack on both sides of each buckle.



### CAUTION

*Even when the seat belt is fastened, be careful not to let the child slip out or stand.*

## Installing the Speakers

### CAUTION

***Be sure to test the volume on your player. Set it at a comfortable level so that it does not startle your baby when turning it on. Loud volume can hurt your baby's ears. If you notice that the sound has become weak or distorted or if tracks do not change, this is an indication that your batteries are low. Replace the batteries and set the volume at a comfortable level.***

1. While facing the front of the canopy insert the speakers into pockets and Velcro them closed.
2. Next, run the speaker wires through each guide and Velcro them closed.
3. Grasp the jack on the speaker wire and place behind the seat cushion. The jack must come through the bottom of the canopy.
4. The seat cushion has a storage pocket on the back. Place your portable CD, cassette, or MP3 player inside the back pocket.
5. Insert the (2.8 mm) mini-plug into the player. Turn on your player.

## Folding the Bouncer

Remove the toy bar and close the canopy. Then, bring the stay bar around the bottom of the Melody Bouncer until it is against the canopy. Fold the seat to the backrest.

### To unfold

Bring the stay bar around to the back of the backrest. Then, bring seat to the open position.

## Routine Maintenance

### STORAGE

Store in a cool and dry area, especially in the summer. Do not store the Melody Bouncer in the trunk of a vehicle.

### SEAT CUSHION

The seat cushion is machine washable. Set to gentle cycle using warm water and a mild detergent. Do not use bleach. Lay seat cushion flat to dry in shaded area. Do not machine dry. To prevent color fading, do not leave soaking for a long period. If the seat cushion is frayed or unraveling, discontinue use and call customer service for further instruction.

### CANOPY

Hand wash with brush. Wipe out excess water with a dry cloth and dry in a shaded area. For stubborn dirt, dilute a mild detergent then apply directly to the dirty area. Wipe out the detergent.

### FRAME AND TOY BAR

Briskly wipe off any mud and dirt. To clean the body, wipe with a damp cloth then wipe out any traces of moisture on the body with a dry cloth. The main body might become moldy and musty if not wiped dry. Excessive exposure to the sun could cause premature color fading of Melody Bouncer plastic and fabric.

### CAUTION

**Before folding your Melody Bouncer, be sure to remove your player from the back pocket of the canopy.**

This will make it easier to fold the Bouncer.

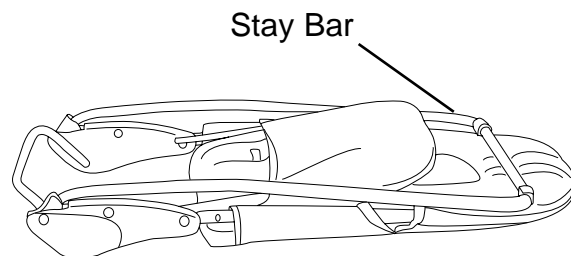
When you fold the Bouncer, you may leave the speakers in the Acoustic Canopy, but only for short periods of time.

In the summer, the temperature may get as high as 150°F/65°C or more in your car or car trunk. Do not leave the Bouncer, with the speakers in the Acoustic Canopy pockets, in your car trunk where the temperature may reach these high levels. Store speakers in a cool and dry area.



### WARNING:

To avoid serious injury keep stereo speakers and cords out of reach of children.



We have moved - Effective 2/7/04

**Combi**

Combi USA, Inc.

1962 Hwy 160 W, Ste. 100  
Fort Mill, SC 29708

1-800-99-COMBI M-F 8:30am-5pm EST  
803-548-3663 FAX

New SC  
Sales Tax  
is 5%

# Melody Bouncer 9100 Series

## Form

If you would like to place an order for the following parts, please fill out the form below and return it to the following address:

~~COMBI International Corporation  
Attn: Customer Service Department  
199 Easy Street  
Carol Stream, IL 60188~~

or ~~Fax this completed form to us at~~

~~630-871-0606~~

**IMPORTANT: We must have this information to process your order:**

Model Number: 9100-0

### Parts List for the Melody Bouncer Model 9100-0

	Price	Quantity	Total
1. Seat Cushion	\$ 15.00		
2. Canopy	20.00		
3. Speaker Set	10.00		
4. Complete Toy Bar including all 3 toys	15.00		
5.			
6.			
7.			
8.			
9.			
	Amount of Order		
	Sales Tax ( <del>7.25%</del> ) ( <del>IL residents only</del> )		
	Total		

If you need to order other parts for your stroller, please call us toll-free at 1-800-992-6624.

Shipping and Handling Fees: Add \$8.00 for orders \$34.99 and under. Add \$13.00 for orders \$35.00 and over. Note: Additional shipping charges will apply outside of the Continental U.S. Combi USA reserves the right to change pricing at any time.

### Ship To:

Customer Name

Street Address

Street Address

City, State, Zip

Telephone Number

### Charge to my credit card:

VISA

MASTERCARD

AMERICAN EXPRESS

DISCOVER

Card Number

Expiration Date

-

Cardholder's Signature

### Check enclosed

9/5/2003