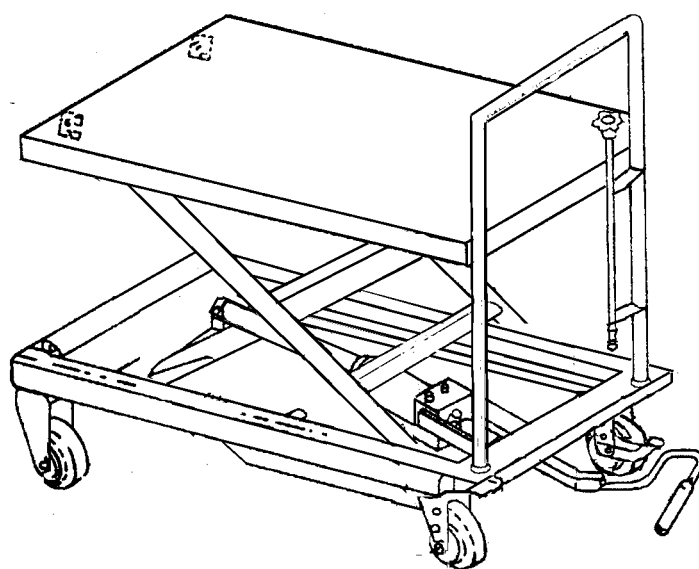




# 1100 Lb. Capacity Hydraulic Table Cart

**Model 38074**

Assembly & Operating Instructions



3491 Mission Oaks Blvd. / Camarillo, CA 93011

**WWW.HARBORFREIGHT.COM**

Copyright© 1999 by Harbor Freight Tools. All Rights Reserved.  
No portion of this manual or any artwork contained herein may be reproduced in any manner, shape or form without the express written consent of Harbor Freight Tools.  
**For technical questions and replacement parts, please call 1-800-444-3353.**



## SPECIFICATIONS

Capacity:	1100 lbs. Maximum
Maximum Height:	33-1/4"
Table Length:	31-5/8"
Table Width:	19-5/8"
Overall Dimensions:	41" x 19-5/8" x 37-1/2"
Weight:	187 lbs.
Construction:	Overall Steel Construction
Wheels:	Hard Rubber with Ball Bearings

## WARNING

1. Read and understand the instruction manual.
2. Do not load hydraulic table cart beyond its rated capacity.
3. Do not allow people to sit or ride on the hydraulic table cart.
4. Secure load before raising or lowering hydraulic table cart.
5. Do not transport loads with hydraulic table cart in a raised position.
6. Use only on smooth surfaces.
7. Keep hands and feet clear when raising or lowering lift.
8. Open release valve knob slowly to allow load to descend in a controlled manner.
9. Failure to comply with the instructions and warnings in this manual may result in personal injury or property damage.
10. Be sure to wear ANSI approved safety goggles when using tools or equipment.

***The Warnings, Cautions, and Instructions discussed in this instruction manual cannot cover all possible conditions and situations that may occur. It must be understood by the operator that common sense and caution are factors which cannot be built into this product, but must be supplied by the operator.***

## ASSEMBLY

*Refer to the Parts Diagram and Parts List on page 3 of this booklet.*

1. Attach HANDLE (51) to the FRAME (24) with two PINS (64), and two RETAINERS (63).
2. Tension the SPRING (18) by turning the RELEASE KNOB (17) one full turn counter clockwise and hold. Fasten two LOWERING RODS (19 and 21) with SET SCREW (20).
3. Attach FOOT LEVER (46) to LEVER BRACKET (45) with HEX CAP BOLT (48), WASHER (49) and NUT (50).

## OPERATION

1. Close release valve by turning clockwise until it stops.
2. Table is raised by activating the foot pedal.
3. To lower the table, slowly turn the release knob counter-clockwise.
4. Before loading, and while stationary, lock the caster brake.

## MAINTENANCE

1. Lubricate each friction point monthly with a good quality grease.
2. Check the free movement and wear of wheels. Replace if needed.
3. Check caster brake function. It should lock firmly and release completely.
4. Check for oil leakage from the hydraulic cylinder. *The hydraulic cylinder is not user servicable.*

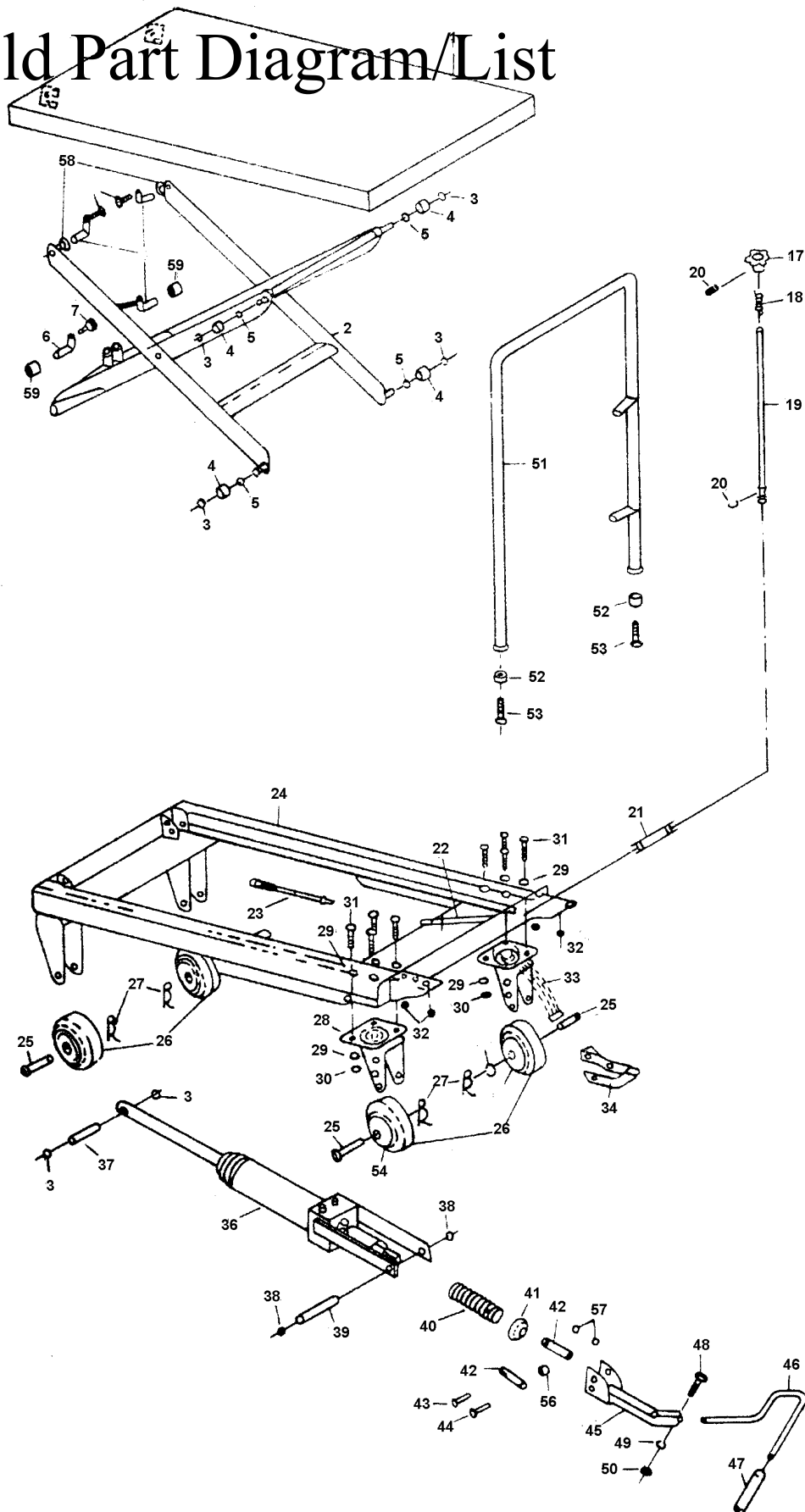


## Hydraulic Table Cart Parts Diagram

### Part # Description

- 1 Table
- 2 Link Assembly
- 3 C-Ring
- 4 Roller Guide
- 5 Washer
- 6 Link Shaft
- 7 Screw
- 17 Release Knob
- 18 Spring
- 19 Lowering Rod
- 20 Socket Set Screw
- 21 Lowering Rod
- 22 Lowering Rod Assy
- 23 Lower Rod
- 24 Frame
- 25 Wheel Shaft
- 26 Wheel Assembly
- 27 Wheel Lock Pin
- 28 Wheel Holder
- 29 Washer
- 30 Nut
- 31 Hex Cap Bolt
- 32 Nut
- 33 Brake Assembly
- 34 Stop Support
- 35 Flat Washer
- 36 Cylinder Assembly
- 37 Lock Pin
- 38 C-Ring
- 39 Lock Pin
- 40 Spring
- 41 Spring Cover
- 42 Slide Lever
- 43 Lock Pin
- 44 Lock Pin
- 45 Lever Bracket
- 46 Foot Lever
- 47 Foot Lever Pad
- 48 Hex Cap Bolt
- 49 Washer
- 50 Nut
- 51 Handle
- 52 Bushing
- 53 Hex Cap Bolt
- 54 Ball Bearing
- 55 Wheel Cover
- 56 Bushing
- 57 Washer
- 58 Bushing
- 59 Bushing

## Old Part Diagram/List



## Hydraulic Table Cart Parts Diagram

- 1 Table
- 2 Link Assembly
- 3 C-Ring
- 4 Roller Guide
- 5 Washer
- 6 Link Shaft
- 7 Screw
- 17 Release Knob
- 18 Spring
- 19 Lowering Rod
- 20 Socket Set Screw
- 21 Lowering Rod
- 22 Lowering Rod Assy
- 23 Lower Rod
- 24 Frame
- 25 Wheel Shaft
- 26 Wheel Assembly
- 27 Wheel Lock Pin
- 28 Wheel Holder
- 29 Washer
- 30 Nut
- 31 Hex Cap Bolt
- 32 Nut
- 33 Brake Assembly
- 34 Stop Support
- 35 Flat Washer
- 36 Cylinder Assembly
- 37 Lock Pin
- 38 C-Ring
- 39 Lock Pin
- 40 Spring
- 41 Spring Cover
- 42 Slide Lever
- 43 Lock Pin
- 44 Lock Pin
- 45 Lever Bracket
- 46 Foot Lever
- 47 Foot Lever Pad
- 48 Hex Cap Bolt
- 49 Washer
- 50 Nut
- 51 Handle bolt rod
- 52 Ball Bearing
- 53 Wheel Cover
- 54 Bushing
- 55 Washer
- 56 Bushing
- 57 Bushing
- 58 washer
- 59 spring.washer
- 60 pin
- 61 retainer
- 62 pin
- 63 handle.socket
- 64 C-clip
- 65 torsion.spring
- 66 steel.ball
- 67 O-ring
- 68 release.valve.rod
- 69
- 70

