

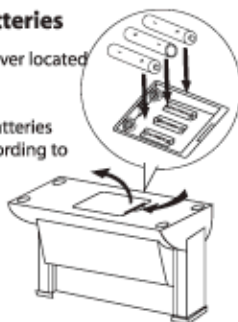
VICTOR Model 650

World Time Clock with Photo Frame and Remote Control Calculator

- No time set needed - Preset time
- Displays time in 16 major cities
- Shows month / year / date
- Current time and temperature
- 3 different alarm settings
- Programed daylight savings time
- Calculator sends data 5 Feet via infrared to remote display for business presentations
- 25-step memory trail
- Gross profit function keys
- Currency Converter

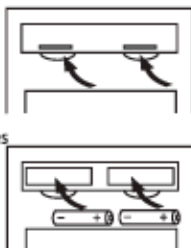
1. Installing Main Batteries

- Step 1.** Open the battery cover located on the bottom.
- Step 2.** Use 3 AA Alkaline Batteries and place them according to the polarity direction indicated.
- Step 3.** Close Battery Cover.



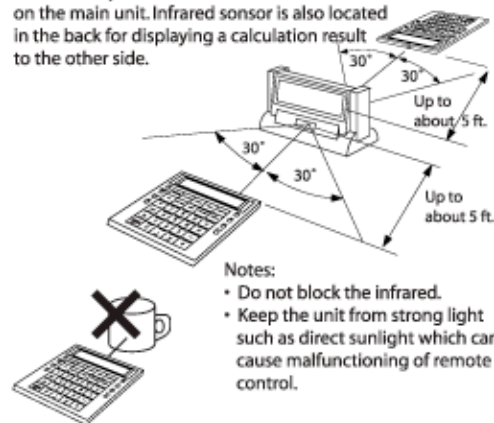
2. Installing Batteries On Remote Keyboard

- Keyboard uses 2 AAA batteries
- Step 1.** Find the battery cover on the back side and open it.
 - Step 2.** Place 2 AAA Alkaline Batteries according to the polarity direction indicated.



3. Using Infrared Remote keyboard

Point the keyboard toward the remote sensor on the main unit. Infrared sensor is also located in the back for displaying a calculation result to the other side.



- Notes:
- Do not block the infrared.
 - Keep the unit from strong light such as direct sunlight which can cause malfunctioning of remote control.

4. Setting Time: Preset time feature - No need to set time!

Los Angeles (US Pacific Time) is set as default time when shipping. As soon as the unit is turned on, Los Angeles time will be displayed.

5. Setting Home (Default) Time Zone

To select the other city as a default time zone:

- Step 1.** Press and hold the key of desired city then display will blink.
- Step 2.** Release the key.
- Step 3.** Press the same key again to confirm.

6. Viewing World Time

Simply press the button of the city you want to know the time. When the city button is pressed, the name of city will be displayed on the dot matrix display area. The time is displayed for 5 seconds then the display is back to default city's time.

7. Auto DST (Daylight Saving Time) Feature

For all the US cities and Europe (London, Frankfurt and Moscow), DF-560 automatically adjusts the time for Daylight Saving Time on the following schedule:

Most of the United States: Starts on the first Sunday of April. Time reverts to standard time on the last Sunday of October.

In the European Union: It starts at the last Sunday in March, and ends the last Sunday in October.

8. Setting My City (Custom time zone set) Time

For the area where is out of preset 16-city time zones, or not participating Day Light Saving Time (ex: Alaska, New Foundland and areas in Arizona and Indiana) The custom time zone can be set:

- Step 1.** Press and hold the "MY CITY" key 3 seconds. the display will blink.
- Step 2.** Release the key.
- Step 3.** Press the "SET" key right away, then "hour" and "Minute" display will flash.
- Step 4.** Press "DOWN" to adjust time, the time starts at London time and you can adjust time by increments of 30 minutes. (To set European, Asian Time Zone - Press "UP")
- Step 5.** Press the "MY CITY" key* to confirm the setting.

*Caution!

DO NOT press "SET" to confirm My City setting. By doing so, it will change other cities' time. Auto DST feature does not apply on My City.

9. Manual Time Setting

DF-560 is set the time when shipping, so no need to set time but in case of the system resetting, you can set time manually:

- Step 1.** Press and hold the key of desired city then display will blink. (Press the same key again to confirm) *Time will be in Military Mode. See CHANGING TO 24H TIME MODE
- Step 2.** Press "SET" button. The seconds segments (last 2 digits) will blink.
- Step 3.** Press "SET" button again. The hour segments (first 2 digits) will blink.
- Step 4.** Press* "UP" or "DOWN" button to set hour. Also use "AM/PM" button to set AM or PM. (After changing From 12/24H Mode)
- Step 5.** Press "SET" button. The Minutes segments (middle 2 digits) will blink.
- Step 6.** Press* "UP" or "DOWN" button to set minute.
- Step 7.** Press "SET" button. The Year (Dot matrix display) will blink.
- Step 8.** Press* "UP" or "DOWN" button to set year.
- Step 9.** Press "SET" button. The Month (Dot matrix display) will blink.
- Step 10.** Press* "UP" or "DOWN" button to set month.
- Step 11.** Press "SET" button. The Date (Dot matrix display) will blink.
- Step 12.** Press "UP" or "DOWN" button to set date.
- Step 13.** Press "SET" button to confirm the time. *(Hold "UP" for Fast Forward, "DOWN" for Rewind)

10. Calendar Function

Calendar displays from the year of 1900 to 2099.

• 12H / 24H (MILITARY TIME) DISPLAY MODE

CHANGING TO 24H TIME MODE

- Step 1.** Press "TIME" and "SET"
- Step 2.** Press "12/24" button then press "TIME" button.

• MONTH/DATE (MM/DD or DD/MM) DISPLAY MODE CHANGING TO EUROPEAN SYSTEM (DATE/MONTH)

- Step.** Press "M<->D" to switch the position of month and date.

Thermometer Function

CHANGING TO CELSIUS(C°) FROM FAHRENHEIT(F°)

- Step.** Press "C<->F" to switch from Fahrenheit (F°) to Celsius(C°) and vice versa.

11. Alarm Function

Total up to 3 alarm can be set.

- Step 1.** Press "ALARM" - "A 1" (Alarm 1) will be displayed.
- Step 2.** Press "SET" button. The hour segments (first 2 digits) will blink.
- Step 3.** Press* "UP" or "DOWN" button to set hour.
- Step 4.** Press "SET" button. The Minutes segments (middle 2 digits) will blink.
- Step 5.** Press* "UP" or "DOWN" button to set minute.
- Step 6.** Press "TIME" button. Alarm 1 is set

* (Hold "UP" for Fast Forward, "DOWN" for Rewind)

To set Alarm 2 and 3.

- Step 1.** Press "ALARM" until "A 2" or "A 3" is displayed
- Step 2.** Repeat Step 2 to Step 6 above.

To cancel alarm set.

Press "ALARM" and press "UP" to delete the alarm set to be canceled.

To stop alarm buzzer

Press any key to stop the timer buzzer.

12. Tone (Entry confirmation click sound)

It can be turned on/off by pressing "TONE"

13. Hourly Chime

Hourly Chime reminds every hour with a chime. It can be turned on/off by pressing "CHIME". You can confirm the status with "CHIME" symbol in the display.

Calculator Function

To switch to Calculation mode.

Press 'CALC CE/AC'



To delete incorrect entry without losing pending calculation.

Press 'CALC CE/AC' once.



To clear the entire calculation.

Press 'CALC CE/AC' twice.



Performing Calculations

Addition (+) Press Displayed
Example: $6 + 7 = 13$. [6] + [7] = 13

Subtraction (-)
Example: $10 - 4 = 6$. [1] [0] - [4] = 6

Multiplication (x)
Example: $7 \times 5 = 35$. [7] x [5] = 35

Division (÷)
Example: $14 \div 7 = 2$. [1] [4] ÷ [7] = 2

Percentages (%) Press Displayed
Example: Calculate 8% of 100. [1] [0] [0] x [6] % = 6
Example: Add 6% tax to \$20. [2] [0] + [6] % = 21.2
Example: Calculate a 20% discount from \$150. [1] [5] [0] - [2] [0] % = 120

Memory Calculations
Example: $(12 \times 3) - (6 + 2) = 33$
Press [CALC CE/AC] [CALC CE/AC]
[1] [2] [x] [3] [M+] [6] [-] [2] [M-] [MRC] = 33
[MRC] [CALC CE/AC] = 0

Profit Calculations

Example: Cost is \$19.95 and Selling Price is \$39.90
What is profit margin (%)?50 (%)

Press
[1] [9] [.] [9] [5] [COST] [3] [9] [.] [9] [0] [SELL] = 50

Example: Selling Price is \$20 and Profit Margin needs to be 50 %
How much the cost should be?\$10

Press
[2] [0] [SELL] [5] [0] [PROFIT%] = 10

Example: Cost is \$69.3 and Profit Margin needs to be 30 %
How much the selling should be?\$99

Press
[6] [9] [.] [3] [COST] [3] [0] [PROFIT%] = 99

Currency Exchange Calculations

Setting the currency exchange rate

Example: (Exchange rate) 1 Euro = 0.9 US Dollar

Press and hold [EX RATE] for 3 second.

Press [0] [.] [9] [EX RATE]

Example: How much the US \$100 would be in Euro?

Press
[1] [0] [0] [FOREIGN] = 111.11 (euro)

Example: How much the 1 Euro would be in US\$?

Press
[1] [HOME] = 0.90 (US\$)

Playback the Calculation Record (Displayed on stand)

DISPLAY(Main unit) DISPLAY (Remote)

REV + 02
2008

You can playback the calculation record up to 25 steps
(Basic Calculation only).

Example: $1 + 2 + 3 + 4 = 10$
Press [1] [+][2] [+][3] [+][4] [=] = 10 (Item# 05)

[< REW] = 4 (Item# 04)
[< REW] = 3 (Item# 03)
[< REW] = 2 (Item# 02)
[< REW] = 1 (Item# 01)

Edit the Calculation Record

You can edit the calculation record up to 25 steps

Example: Change * 3 * (Item# 03) of the calculation above to * 5 *
Press [FWD >] = 2 (Item# 02)

[FWD >] = 3 (Item# 03)

[EDIT] [5] [EDIT] = 5 (Item# 03)

[FWD >] = 4 (Item# 04)

[FWD >] = 12 (Item# 05)

Back-up Battery Replacement

The special preset time feature of 650 also keeps current time setting even the main batteries are getting low, to ensure this feature, please replace back-up battery in every 1 to 2 years.

Step 1. Make sure the main battery is new and the unit is working properly.

Step 2. Use a screw driver to loosen the screw on the back up battery cover and open the cover.

Step 3. Replace a lithium battery (CR-2032)
Make sure the positive '+' is facing up.

Step 4. Close the cover and tighten the screw.



Power Saver Feature: To save the battery life

After using the remote keypad, press [TIME] and place it back on to the main unit. It will save the battery power for IR (Infrared) scanning.

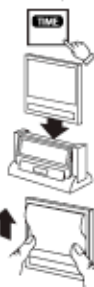
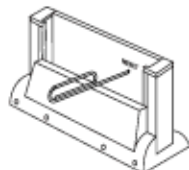


Photo Frame

The photo frame window holds 3.5" x 5" photo, you may need to trim the photo to fit.

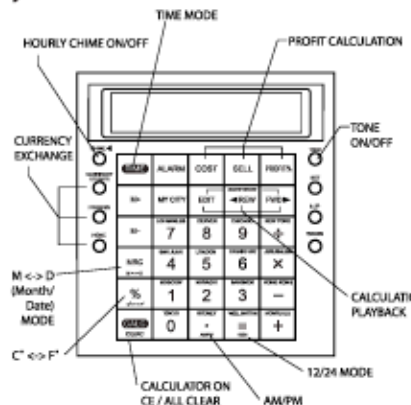
To change the photo, just slide the plastic sheet and remove it, then place the photo into the frame. Replace the plastic sheet.



Main Unit Display



Keyboard



Trouble Shooting

- Nothing is displayed on the main LCD display:**
Check the batteries are new and placed correctly.
- Cannot control the display with keypad:**
Clear the path of infrared, no obstacles. Move keypad closer to main unit and try it again.
- The unit is halt (Freeze):**
Take out Main Batteries and place them back in. If that does not work: Press reset hole located on the rear case with a paper clip and set the time (refer to "Manual Time set")
- The display is blinking:**
If the "Seconds" segments are blinking, it means that the "SET" key is pressed accidentally. Press "TIME" to resume clock mode.

Care And Maintenance

Keep the unit dry. If it gets wet, wipe it dry before use. Do not use harsh solvents or detergents to clean.

WARRANTY

Your VICTOR electronic calculator is guaranteed to the original purchaser for one (1) year for all parts and labor, providing repair work is performed at an authorized VICTOR Regional Service Center and the unit is sent prepaid. Warranty repair requires a copy of the original purchase invoice or receipt to be packed with the machine. Any warranty, statutory or otherwise, does not include service and/or replacement or repair of parts when damage or defect is a result of accident, abuse, or the elements.

Victor Technology
Addison, IL 60101
(800) 628-2420
www.victortech.com