

Low Profile Portion Control Grinder with 1 Hopper

Features

Portion Control Grinder

- Just 8.64" (21.95 cm) wide and a low profile height of 15.1" (38.4 cm).
- Professional grind provided by large 3.19" (8.1 cm) diameter burrs.
- Powered by quiet, high torque motor.
- Large, clear bean hopper merchandises 6 lbs. (2.72 Kg) of fresh coffee beans.
- Easy access on back for grind weight adjustment.
- Three year warranty on grinding burrs.
- Black or stainless decor.



Model LPG

(Funnel sold separately)

Dimensions: 15.1"H x 8.64"W x 10"D
(38.4cm H x 21.95cm W x 25.4cm D)

For current specification sheets and other information, go to www.bunn.com.

Related Products

Precision Burrs

All BUNN grinders use precision burrs to cut (not crush) the coffee beans and deliver consistent grind distribution. BUNN burrs are rated at a Rockwell hardness of 66C, resulting in an exceptionally long burr life.



Model

Agency Listing

LPG



Dimensions & Specifications

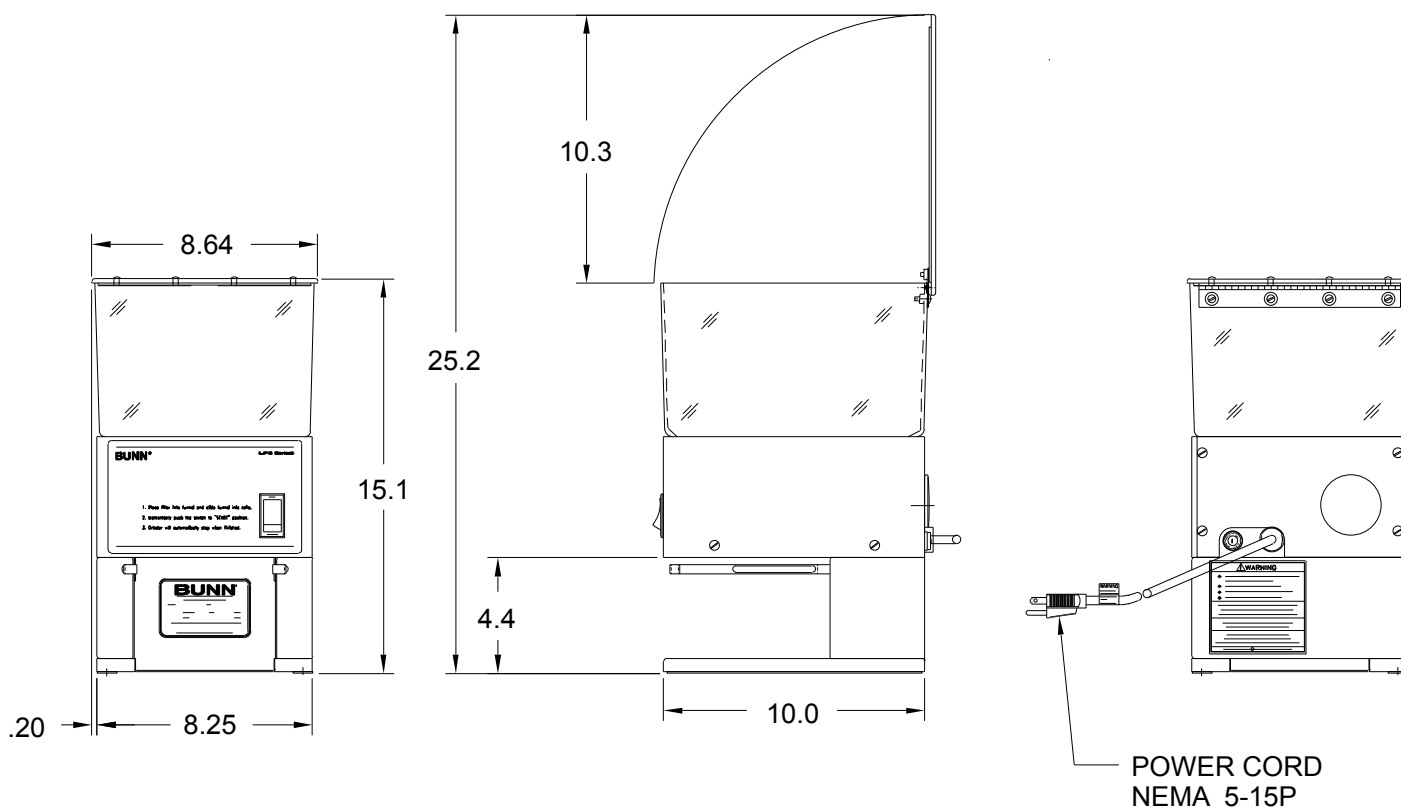
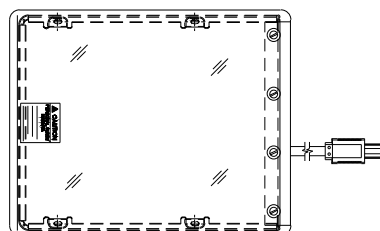
CANADA



Model	Product #	Volts	Amps	Capacity lbs/kg	Cubic ft ³ /m ³	Weight lbs / kg	Cord Attached
LPG-B	20580.6001	120	3	6 / 2.72	2.2 / .062	23 / 10.5	Yes**
LPG-S*	20580.6000	120	3	6 / 2.72	2.2 / .062	23 / 10.5	Yes**

*Model has stainless decor. **Power cord (NEMA 5-15P) 15 Amp-120V machine only.

Electrical: Model requires 2-wires plus ground service rated 120V, single phase, 60 Hz.



Bunn-O-Matic Corporation of Canada - 280 Industrial Pkwy. S. Aurora, Ontario L4G 3T9 • 905-841-2866 • Fax 905-841-2775 • www.bunn.com

BUNN® practices continuous product research and improvement. We reserve the right to change specifications and product design without notice. Such revisions do not entitle the buyer to corresponding changes, improvements, additions or replacements for previously purchased equipment.

All dimensions shown in inches. Bunn Corporation owns all copyrights relating to materials in this publication. Please contact Bunn Corporation to request permission to reproduce any portion of this publication.