

BRAUN

Braun exact 6 memory universal

Type 5281

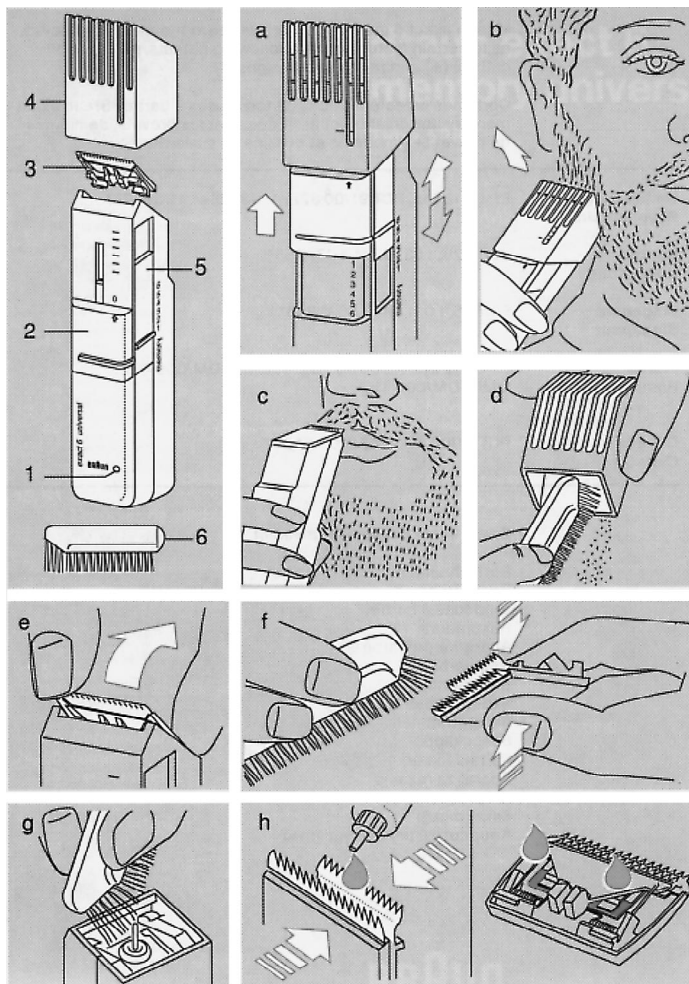
Beard trimmer

[English](#)

[Use Instructions](#)

[Guarantee](#)

[Service Centers](#)



English

Our products are engineered to meet the highest standards of quality, functionality and design. We hope you thoroughly enjoy your new Braun appliance.

Braun exact 6 memory universal

This appliance can be operated on all international alternating current outlets. Its built-in rechargeable cell permits 2-way beard trimming: either with the cord connected directly to an outlet (cord operation) or without the cord via the rechargeable cell (cordless operation).

Specifications

Voltage range: 100 - 240 V (~)

50 - 60 Hz

Wattage: 3.5 W

Trimming system: cutting unit ③, trimming width 34 mm, distancing comb ④ for 6 beard length settings (2, 5, 8, 11, 14, 18 mm) Memory function

Charging time: 2 hours

Quick charge for one trim: 10 minutes

Operating time: approx. 60 minutes (fully charged)

The best environmental temperature range for the trimmer is between 15 °C - 35 °C. The trimmer should never be exposed to temperatures of less than 0 °C and more than 40 °C for longer than a few hours.

Do not wind the cord around the appliance.

Environmentally friendly cell unit

For environmental reasons, this appliance is provided with a nickel-hybrid cell unit. This cell unit does not contain any poisonous heavy metals.

Nevertheless, in the interest of recycling raw materials please do not dispose of this appliance in the household waste at the end of its useful life.

Disposal can take place at a Braun Service Centre or at appropriate collection sites.

Description

- ① Pilot light
- ② Switch (on/off), cutting length)
- ③ Cutting unit
- ④ Distancing comb
- ⑤ Memory-Switch
- ⑥ Cleaning brush

Cord operation

The trimmer is ready for use immediately via cord operation (i.e. when the trimmer is connected directly to an electrical outlet).

If the trimmer should, however, not run immediately due to a completely empty cell, recharge the trimmer for approx. 1 minute (switch turned off = «0»), which is sufficient to permit trimming via cord operation (after turning the switch on again).

Cordless operation

Turn the trimmer off (switch ② set to «0»), connect the cord to the trimmer and plug into an electrical outlet. Recharge for 5 hours. The pilot light ① is illuminated at the beginning of the charging process and changes to flashing as the appliance is being charged, with increasingly longer pauses. When recharged, unplug the trimmer. The trimmer should not stay connected to an outlet for several weeks. Occasional overcharging for several days will, however, not damage the trimmer.

In order to maintain the full capacity of the cell unit, it should be fully charged (5 hours) before the first use and then discharged by normal use until the trimmer runs distinctly slower. Then recharge for 2 hours. This charging/discharging process should be repeated about every 6 months. All subsequent recharging also takes 2 hours. Fully charged, the appliance gives about 60 minutes of shaving.

Beard trimming

Place the distancing comb ④ on the beard trimmer while the switch ② is turned off (= «0») and select the desired beard length. The length can easily be selected with one hand (a). There are six length settings (2, 5, 8, 11, 14, 18 mm); setting «6» is the longest beard length, setting «1» the shortest.

It is advisable to start with setting «6» and then reduce the setting until you reach the desired beard length. Hold the distancing comb with the angled edge against your beard (b). The distancing comb keeps the cutting unit at right angles while it combs through your beard. When giving your beard a more thorough trimming or when thinning out your beard, it is recommended to guide the trimmer against the direction of beard growth.

Memory function

Your beard trimmer is provided with a memory function (switch ⑤), to prevent you cutting your beard too short by using the wrong setting. When you have found the right cutting length, you can simply move the memory switch ⑤ to the right setting (1 - 6) (a). The motor will not start before the switch ② has reached this

setting. For longer settings, you can move switch ② above the setting of the memory switch ⑤ and the motor will keep running. The memory function is retained, even if the distancing comb ④ is removed and put on again.

Note: The distancing comb ④ can only be put on or taken off if the trimmer is turned off (switch set to «0»). When using for longer applications, clean the distancing comb with the brush ⑥ in between to avoid clogging it with hair (d). The cutting unit ③ is for trimming hairlines, shaving off single hairs, or shaping beards (c). For these applications, the trimmer is used without the distancing comb, and the same setting as the memory function.

Cleaning and maintenance

After every use, take off the distancing comb ④ and clean with the cleaning brush ⑥. Tilt and lift off the cutting unit ③ (e). Clean the appliance and the cutting unit with the cleaning brush (f, g). Press the cutting unit back on the appliance until it snaps in place.

Occasionally, take off the cutting unit ③ and oil sparingly (h).

Important

Buy only original Braun spare parts, especially when replacing the cord. Only this way you can be assured of a safe, close and efficient trim.

Subject to change without notice.

CE This product conforms to the EMC-Requirements as laid down by the Council Directive 89/336/EEC.

Guarantee

We grant a 1 year guarantee on the product commencing on the date of purchase.

Within the guarantee period we will eliminate, free of charge, any defects in the appliance resulting from faults in material or workmanship either by repairing, or exchanging parts or exchanging the whole appliance as we may choose.

Not covered by this guarantee: damage arising from improper use, normal wear and defects which have a negligible effect on the value or operation of the appliance.

The guarantee becomes void if repairs are undertaken by unauthorized persons and if original Braun parts are not used.

The guarantee only comes into force if the date of purchase is confirmed by the dealer's stamp and signature on the guarantee card and registration card.

This guarantee extends to every country where this appliance is supplied by Braun or its appointed distributor and where no import restrictions or other legal regulations hinder or prevent service being given under guarantee.

Service under the guarantee does not affect the expiry date of the guarantee. The guarantee on parts or entire appliances which are exchanged ends when the guarantee on this appliance expires.

In the event of a claim under this guarantee, hand in the complete appliance with the valid guarantee card to your dealer, or send both to

the nearest Braun Customer Service Centre. All other claims including for damages resulting from this guarantee are excluded unless our liability is legally mandatory.

Those claims arising out of the sales contract with the vendor are not affected by this guarantee.

For UK only:

This guarantee in no way affects your rights under statutory law.