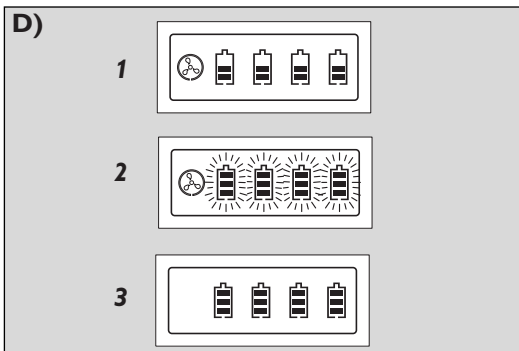
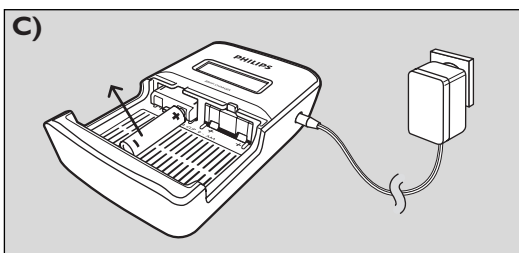
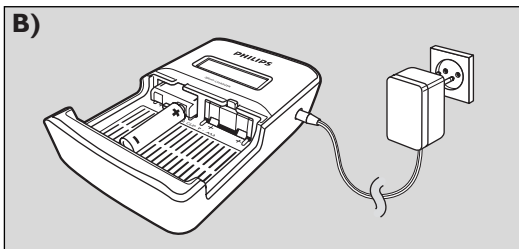
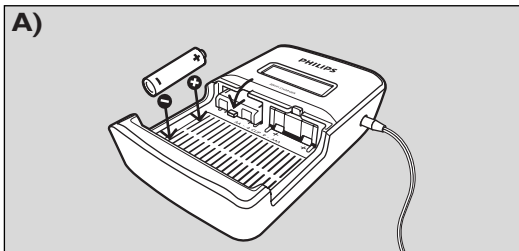


- EN User Manual
- FR Manuel d'utilisation
- ES Guía de usuario
- DE Bedienungsanleitung
- NL Gebruikershandleiding
- IT Manuale d'uso
- PT Manual do utilizador
- GR Οδηγός χρήσης
- TR Kullanım kılavuzu
- DK Brugervejledning
- SV Användarhandbok
- FI Käyttöohje
- PL Instrukcja obsługi
- CS Uživatelská příručka
- SK Návod na použitie
- HU Felhasználói kézikönyv
- RU Руководство по эксплуатации



**PHILIPS**



**E) Battery charging times:**

Battery size	Battery capacity (mAh)	Approx. charging time
AA Ni-MH	2600 mAh	33 min
AA Ni-MH	2450 mAh	30 min
AA Ni-MH	1800 mAh	20 min
AA Ni-MH	1300 mAh	15 min
AAA Ni-MH	700 mAh	20 min

### Important Safety Instructions:

Save these instructions - this manual contains important safety and operating instructions for this charger. Before using your charger read all instructions and cautionary markings on the charger, the batteries to be charged and the products that use the batteries.

#### Warning:

- Use to charge Ni-MH batteries only. Do not charge Alkaline, Zinc Carbon, Lithium or any other type of battery not specified on the charger. Other types of batteries might burst or leak causing personal injury.
- For proper battery insertion, please observe pole indications (+/-). See fig. A.
- Do not dispose of in fire, short circuit or open.
- Charge new batteries before using.
- Never alter the AC cord or plug.
- Do not operate the charger if it has been subjected to shock or if it is damaged.
- Do not disassemble the charger.
- To avoid risk of electric shock, unplug the charger from the electrical outlet before cleaning or when not in use.
- This battery charger is for indoor use only. Do not expose the charger to rain or excessive moisture. Keep the charger away from dust and dirt, which can cause premature wear of parts or harm its normal operation.
- Never use the charger as a power source for any electrical equipment.
- Do not incinerate, disassemble or short circuit batteries since they may burst or release toxic materials.
- This charger is not intended for use by young children or infirm persons without supervision.
- To reduce the risk of damage to the AC plug and cord, disconnect the charger by pulling the plug and not the cord.
- Do not operate the charger if cord or plug is damaged.
- Do not charge damaged or leaking batteries.

#### Care

- Wipe the charger with a damp cloth occasionally without harsh chemicals, cleaning solvents or strong detergents.
- Charger and batteries must be disposed of separately. Inform yourself about the separate collection system for electrical and electronic products.

### Operating Instructions

#### General charging guidelines

- At the same time you can charge 1, 2, 3 or 4 AA/AAA batteries.
- For long battery life, only charge empty batteries.
- When charging, ambient temperature should be between 0°C and 40°C (32°F and 104°F).
- You can charge batteries with different capacity (mAh) and size (AA/AAA) at the same time.

Note: It is normal for the unit and the batteries to become warm while charging.

#### Charging batteries

- 1** Insert batteries in the charger.  
For AAA batteries, flip down the charger contacts. See fig. A.
  - 2** Connect the DC output plug of the adapter into the DC input jack of the charger and plug the adapter into a household electric outlet. See fig. B.  
> The display shows: see fig. D1.  
> If any of the batteries is not installed correctly, the battery/batteries will not be charged.  
> If any of the batteries is not suitable for charging (i.e. a bad battery), the battery symbol on the display will flash and the battery/batteries will not be charged. See fig. D2.  
> When the batteries are fully charged, the display shows: fig. D3. The charger will now switch over to trickle charge to keep your batteries fully charged for use.
  - 3** When you are going to use the batteries, disconnect the plug from the outlet and remove the batteries. See fig. C. Always unplug between charges!
- The charger can be powered by the car's 12V DC accessory (cigarette lighter) socket. Only use the supplied car cord.

Note: The input voltage for the battery charger is DC 11V-16V, 3600 mA.

Battery charging times: See fig. E.

CE 0682 D

Additional information (including warranty conditions) available at our website:

[www.philips.com/support](http://www.philips.com/support)

Specifications subject to change without notice.  
All dimensions shown are approximate.

Specifications are subject to change without notice.  
Trademarks are the property of Koninklijke Philips Electronics N.V. or their respective owners.  
2008 © Koninklijke Philips Electronics N.V. All rights reserved.

www.philips.com

Visit our website at [www.philips.com](http://www.philips.com)