



Patent #6,253,416 and other patents pending
F902SPS, F902SPH, F1302SPH, F1802SPV
BILLY GOAT FORCE BLOWER
Owner's Manual

Accessories

| |
|-------------------------------------------------------------------------------------|
| HOLD DOWN KIT |
| <i>To secure blower for transportation on trailer floors.</i> |
|  |
| P/N 440120 |

| |
|-------------------------------------------------------------------------------------|
| SOLID FRONT TIRE |
| <i>Solid flat-free front tire.</i> |
|  |
| P/N 440279 |

| |
|--------------------------------------------------------------------------------------|
| PARKING BRAKE |
| <i>Effective and Easy to use to prevent blower from rolling.</i> |
|  |
| P/N 440140 |

| |
|---------------------------------------------------------------------------------------|
| CASTER KIT |
| <i>For greater maneuverability on hard surfaces.</i> |
|  |
| P/N 440293 |



CONTENTS

| | |
|------------------------------------|-----|
| SPECIFICATIONS AND SOUND/VIBRATION | 3 |
| INSTRUCTION LABELS | 4 |
| PACKING CHECKLIST | 5 |
| ASSEMBLY | 6 |
| OPERATION | 7-8 |
| MAINTENANCE | 9 |
| TROUBLESHOOTING | 10 |
| ILLUSTRATED PARTS LIST | 11 |
| PARTS LIST | 12 |

Go to <http://www.billygoat.com> for French-Canadian translations of the product manuals.

Visitez <http://www.billygoat.com> pour la version canadienne-française des manuels de produits



| Specifications | F902SPS | F902SPH | F1302SPH | F1802SPV |
|------------------------------------------|--------------------------------|----------------------------------|--------------------------------|--------------------------------|
| Engine: HP | 9.0 HP (6.6kW) | 9.0 HP (6.6kW) | 13.0 HP (9.6kW) | 18 HP (13.42kW) |
| Engine: Model | EX270D50021 | GX270K1QA2 | GX390K1QAA2 | 3564420224E9 |
| Engine: Type | SUBARU OHC | HONDA OHV | HONDA OHV | B & S VANGUARD |
| Engine: Fuel Capacity | 6.4 qt. (6.1L) | 6.3 qt. (6.0L) | 6.5 qt. (6.1L) | 9 qt. (8.52L) |
| Engine: Oil Capacity | 1.05 qt. (1.0L) | 1.16 qt. (1.1L) | 1.16 qt. (1.1L) | 1.75 qt. (1.66L) |
| Total Unit Weight: | 141 # (64 Kg) | 152 # (68.9 Kg) | 167 # (75.7 Kg) | 182 # (82.6 Kg) |
| Overall Length: | 58"(1.43m) | 58"(1.43m) | 58"(1.43m) | 58"(1.43m) |
| Overall Width | 29.25" (0.74m) | 29.25" (0.74m) | 29.25" (0.74m) | 29.25" (0.74m) |
| Overall Height | 45" (1.14m) | 45" (1.14m) | 45" (1.14m) | 45" (1.14m) |
| In compliance with 2000/14/EEC standards | 107dB(a) @3340 rpm | 109dB(a) @ 3660 rpm | 110dB(a) @ 3640 rpm | 117dB(a) |
| Sound at Operator's ears | 87dB(a) @ 3340 rpm | 89dB(a) @ 3660 rpm | 90dB(a) @ 3640 rpm | 97dB(a) |
| Vibration at operator position | .96 g (9.44 m/s ²) | 1.05 g (10.30 m/s ²) | .81 g (7.96 m/s ²) | 1.2 g (11.9 m/s ²) |

SOUND



SOUND LEVEL 97 Db(a) at Operators Position

Sound tests were conducted in accordance with 2000/14/EC, as well as ISO 11094, and were performed on 12-12-2006 under the conditions listed below.

Sound power level listed is the highest value for any model covered in this manual. Please refer to serial plate on the unit for the sound power level for your model.

| | |
|----------------------|------------------|
| General Conditions: | Sunny |
| Temperature: | 40.4°F (4.7°C) |
| Wind Speed: | 6.1 mph (9.9kph) |
| Wind Direction: | Southwest |
| Humidity: | 93.6% |
| Barometric Pressure: | 30Hg (101.85kpa) |

VIBRATION DATA

VIBRATION LEVEL 1.2g (11.9m/s²)

Vibration levels at the operator's handles were measured in the vertical, lateral and longitudinal directions using calibrated vibration test equipment. Tests were performed on 12-13-2006 under the conditions listed below.

| | |
|----------------------|--------------------|
| General Conditions: | Sunny |
| Temperature: | 57.2°F (14.3°C) |
| Wind Speed: | 11.8 mph (19.1kph) |
| Wind Direction: | South |
| Humidity: | 46.4% |
| Barometric Pressure: | 30.1Hg (101.96kpa) |



INSTRUCTION LABELS

The labels shown below were installed on your BILLY GOAT[®] FORCE Blower. If any labels are damaged or missing, replace them before operating this equipment. Item numbers from the Illustrated Parts List and part numbers are provided for convenience in ordering replacement labels. The correct position for each label may be determined by referring to the Figure and Item numbers shown.



LABEL SPARK ARRESTOR
P/N 100252



LABEL READ OWNERS MANUAL
ITEM #44 P/N890301



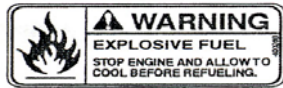
LABEL EAR EYE BREATHING
ITEM# 45 P/N890254



DANGER FLYING DEBRIS
ITEM # 46 P/N 810736



LABEL CLUTCH ENGAGE
P/N 500176



LABEL EXPLOSIVE FUEL
ITEM # 43 P/N 400268



LABEL OIL CHAIN
ITEM #119 P/N 830502



LABEL THROTTLE CONTROL
ITEM # 42 P/N 810656

ENGINE LABELS

HONDA



READ OWNER'S MANUAL BEFORE OPERATION.
LIRE LE MANUEL D'UTILISATEUR AVANT USAGE.
VOR INBETRIEBNAHME UNBEDINGT BEDIENUNGSANLEITUNG DURCHLESEN.
NO UTILIZAR SINANTES NO HABER LEIDO EL MANUAL.
HONDA MOTOR CO., LTD. MADE IN JAPAN

OIL ALERT
WHEN OIL LEVELLOW,
ENGINE STOPS IMMEDIATELY.

SUBARU



| | | |
|--|-------------------------------------------------------------------|-------------------------------|
| | Read the owner's manual. | |
| | Stay clear of the hot surface. | |
| | Exhaust gas is poisonous. Do not operate in an unventilated area. | |
| | Stop the engine before refueling. | |
| | Fire, open flame and smoking prohibited. | |
| | On (fuel) | Plus: Positive polarity |
| | Off (stop) | Battery |
| | Engine oil | Engine start (Electric start) |
| | Add oil | |

BRIGGS AND STRATTON VANGUARD

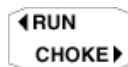
ENGINE MAINTENANCE

| | |
|------------------------------|-----------|
| 1. CHECK OIL LEVEL | 8 HOURS |
| 2. CHECK & CLEAN AIR CLEANER | 25 HOURS |
| 3. CHANGE OIL | 50 HOURS |
| 4. REPLACE OIL FILTER | 100 HOURS |
| 5. CLEAN COOLING FINS | 100 HOURS |

See Operating and Maintenance Instructions

FUEL SHUTOFF

OFF → ON





PACKING CHECKLIST

These items should be included in your carton. If any of these parts are missing, contact your dealer. Your BILLY GOAT® *FORCE Blower* was shipped in one carton, completely assembled except for the Upper Handle Assembly and Front Diverter. Mounting hardware for the Upper Handle Assembly can be found in the parts bag.



READ all safety instructions before assembling unit.

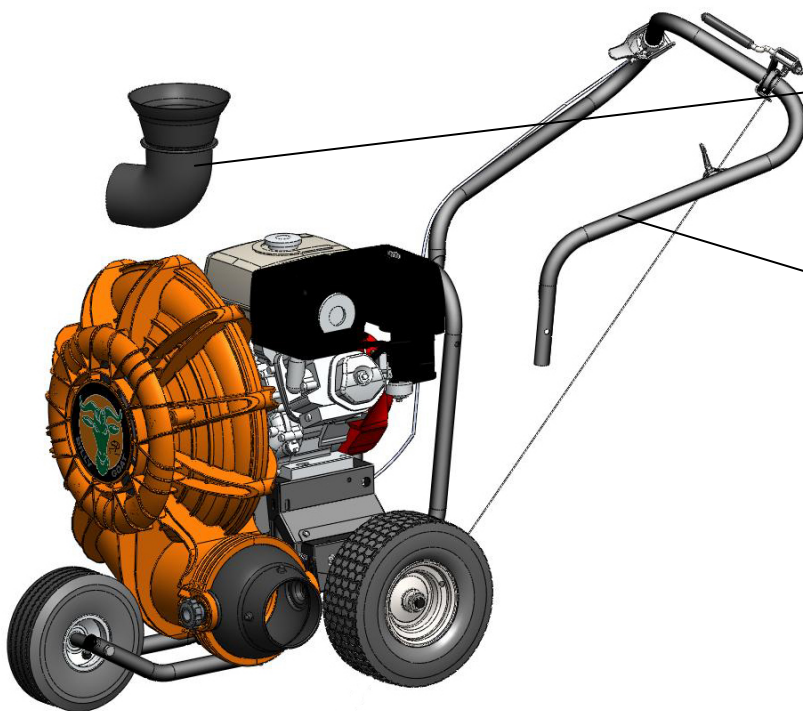
TAKE CAUTION when removing the unit from the box as the Handle Assembly is attached to the unit by cables.



PUT OIL IN ENGINE BEFORE STARTING

PARTS BAG & LITERATURE ASSY

Warranty card P/N- 400972, Owner's Manual P/N-440314, General Safety and Warnings Manual P/N-100294. Declaration of Conformity P/N-440022. Handle Hardware-Items #10. #11. #74. #36. and #123



Boxing Parts Checklist

- Front Air Diverter
(For F902S, F902H, and F1302H models only)
Item#38
F9 MODELS P/N-440045-4
F13 MODELS P/N-440045-5
- Handle Upper Assembly
Item #30 P/N-440035
- Parts Bag & Literature Assy
P/N-440267
- Honda 9 or 13 hp
- Subaru 9 hp
- B & S Vanguard 18 hp

ASSEMBLY

1. Follow the steps in figures A and B, then securely tighten all hardware shown.
2. Connect spark plug wire.

Figure A

The hardware for attaching the upper handle to the lower is in the parts bag. Install upper handle (item 30), to preassembled lower handle (item 28) by sliding the upper over and down the outside of the lower handle. Using bolt (items #36 and 123), washers (item #10) & lock nut (item #11) to install upper handle to lower handle. **Note:** The Pigtail bolt should go on the side that the pull start is on and the open end should be facing down. Finish installing the other side of the upper handle assembly using screw and lock nut provided.

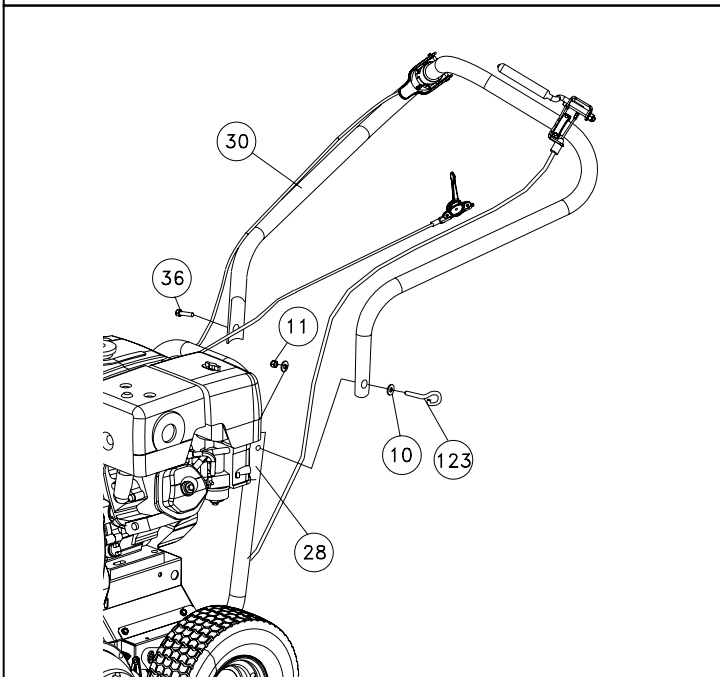
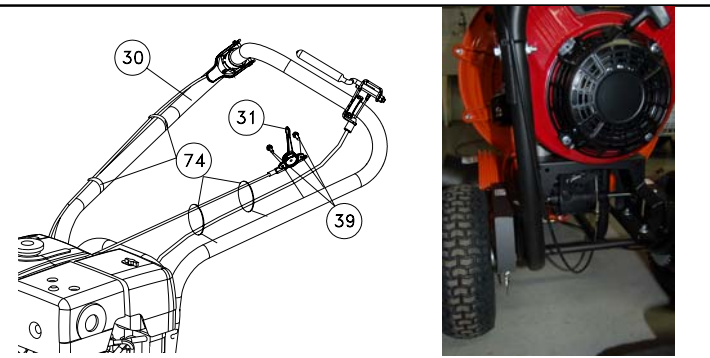


Figure B

The throttle control will be attached to the throttle arm on the engine and wrapped around the engine for shipping. Unwrap and secure throttle control (item #31) to upper handle with screws (item #39). Screws will already be mounted in handle, simply remove and use to mount the throttle control. Secure the throttle cable and clutch cable with two Ty-wraps. The Aim-and-Shoot™ is not attached, you will need to unroll the cable and attach the ball end to the lever and seat the cable end into the hole on the saddle clamp, with the cable running through the slot. The Clutch cable will also be wrapped up under the machine. Route the cable under the axle and attach it by removing the hitch pin and clevis pin and attaching it to the clutch control lever. After it is attached pull on the cable and slide it into the hole on the bracket so that it clicks into place. To keep the cable from being damaged use three ty-wraps (item 74) to secure it to the handle as shown making sure that the cable is not rubbing against the tire. **Note:** the cable should be seated properly in the saddle and should follow the contours of the handle.



Good routing

Bad routing



Two 1/2" open ended wrenches



One 5/16 open ended wrench



OPERATION

DRIVE LEVER:

To engage the clutch for forward motion, simply hold down the clutch lever with your left hand while the engine is running, this will cause the drive to engage and the machine will proceed to move forward. ⚠ Caution: It is not recommended to “feather” the drive. The drive lever should be either fully engaged or fully disengaged. Failure to do so can cause premature failure of the cone clutch in the transmission. This type of failure will void the manufacturer’s warranty.

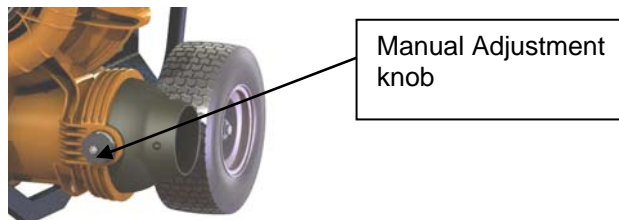
BLOWING OPERATION

Your Billy Goat Force blower is equipped with an air director cone and the patented Aim-N-Shoot™ control lever to allow the operator to direct the air stream up or down as required to assist in moving debris. This feature is extremely useful when debris has piled up to the point that it cannot be blown any farther. The air stream can be directed upward to blow the top of the debris pile over and allow the operator to continue moving more debris farther.

ADJUSTING AIR DIRECTOR

To adjust air direction, squeeze Aim-N-Shoot™ control lever. When you want to blow debris at the same angle for an extended period, choose a suitable position and use the finger controlled push button lock to lock the cone in position. For operations that do not require the use of the Aim-N-Shoot™ feature the manual adjustment knob, pictured below, can be used to permanently lock the cone into position. ⚠ **CAUTION:** Be sure to release the knob when returning to using the Aim-N-Shoot™.

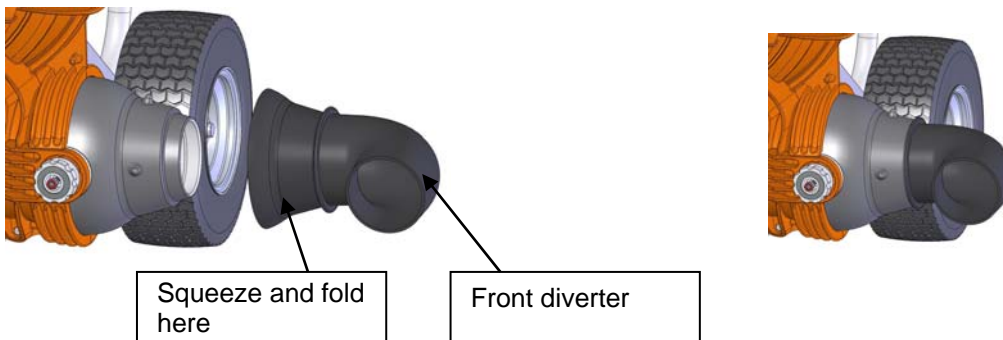
⚠ **DO NOT** position director cone to where it will blow debris towards people, vehicles or other objects in vicinity. Flying debris may damage, harm, or cause injury to people or objects in air flow range.



FRONT DIVERTER POSITIONING (F9 and F13 models only)

The removable front diverter adapter can be slipped inside the cone to direct the air stream forward. **First turn off engine**, and then simply collapse and fold in the larger opening of the diverter and slide inside the cone and allow it to expand. Then position to the desired angle by rotating the diverter. This option is extremely useful for cleaning out long cracks in pavement or for cleaning under bushes, building overhangs or along curbs.

⚠ **WARNING:** Unit will be more difficult to control due to the air exiting the unit. Keep hands on the unit at all times when using the front diverter. Please note that the Aim-N-Shoot™ feature will not function when the Front Diverter is installed





MAINTENANCE

Periodic maintenance should be performed at the following intervals:

| Maintenance Operation | Every Use | Daily or Every 5 Hours | Every 25 Hours | Every 50 Hours | Every 100-150 Hours |
|---------------------------------------|-----------|------------------------|----------------|----------------|---------------------|
| Inspect for worn or damaged parts. | • | | | | |
| Check for excessive vibration | | • | | | |
| Check belt/chain tightness | • | | | | |
| Oil drive chain | | • | | | |
| Inspect Impeller for cracks or damage | | | | | • |
| Inspect for loose parts. | | • | | | |

IMPELLER REMOVAL

1. Wait for engine to cool and disconnect spark plug.
2. Remove housing front cover, by removing (11) bolts and nuts, items #13 & #14, around outside of front cover.
3. Remove impeller bolt (item #35), lock washer (item #71) and washer (item #34).
4. DO NOT pry on impeller. Pull on center hub area only of impeller. *Using a penetrating oil can help loosen a stuck impeller.*
5. Reinstall new impeller in reverse order of removal.
6. Tighten impeller bolt. Torque impeller bolt (see parts list on page 15 for proper impeller bolt torque specifications).

TIRE AIR PRESSURE

Check at regular intervals and maintain.

Front Tires - 24 Psi (165 kPa).

Rear Tires - 20 Psi (137 kPa).

BELT TENSION ADJUSTMENT

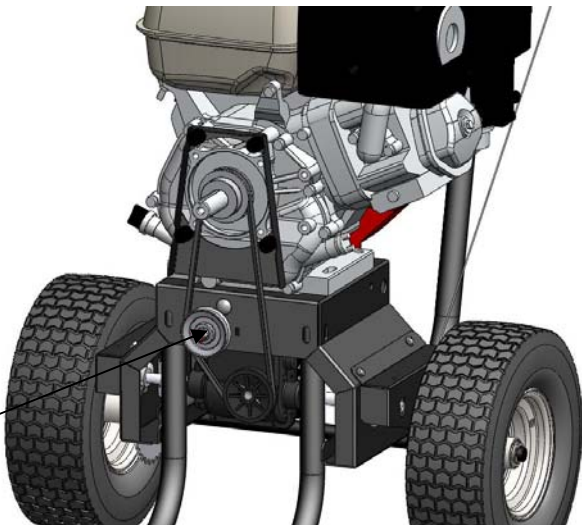
DO NOT ADJUST WHILE THE MACHINE IS RUNNING!

1. Wait for engine to cool and disconnect spark plug.
2. Loosen the nut (item 92) on the Idler pulley (item 93) but do not remove it. This should allow the pulley to slide left or right. Once the pulley is at the proper distance to apply tension to the belt tighten the nut. **Note:** Do not place too much tension on the belt, as it will cause premature failure.
3. Reattach the spark plug.

BELT REPLACEMENT

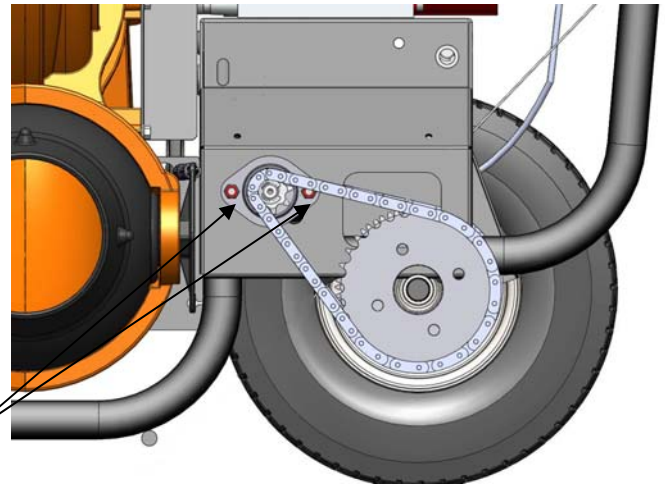
1. Wait for engine to cool and disconnect spark plug.
2. Follow the Impeller removal steps (2-5 on page 12).
3. Remove the four bolts (item 8) holding the back plate (item 4) to the back housing (item 6).
4. Loosen the nut on the idler pulley and slide it to the right to relieve tension on the belt.
5. Slip the belt (item 86) off the engine pulley and the transmission.
6. Replace the belt with a new one and slide the Idler pulley to put proper tension on the belt. **Note:** Do not place too much tension on the belt, as it will cause premature failure.
7. Reassemble the machine in reverse order. **Note:** You will need to replace the Impeller bolt and torque to the proper specifications see page 16, **DO NOT** use the old one.
8. Reconnect spark plug wire.

Idler Pulley



DRIVE CHAIN REPLACEMENT

1. Wait for engine to cool and disconnect spark plug.
2. Place a block of wood, or another object that will support and steady the unit under the axle on the side of the machine you will be working on.
3. Remove the two screws (item 103) holding the chain guard (item 104) and then remove the chain guard.
4. Loosen the two nuts (item 98) holding the bearing (item 97).
5. Remove the retaining ring holding the wheel on and then slide the wheel off.
6. Replace the chain (item 105). Remove the old chain by walking it off the sprockets.
7. Position the bearing so that it applies the proper tension to the chain and tighten the nuts holding the bearing **Note: DO NOT** over tighten the chain, as this will cause premature failure. Likewise if the chain is too loose it will come off when the drive is engaged.
8. Reassemble the machine using steps 1-4 in reverse order.



Loosen these nuts

CLUTCH CABLE ADJUSTMENT

1. With the machine off, loosen the two nuts on the end of the clutch cable (item 111) going in to the transmission.
2. By moving the position up or down on the threads it will change the tension on the clutch lever (item 113). **Note:** Do not position it too high on the threads as this could cause the drive not to engage. Likewise, if it is placed too low the drive may stay permanently engaged. The optimum setting is to remove any slack in the clutch cable when disengaged. The travel of the clutch control will apply the correct spring force on the cone clutch. Once the desired position is in place tighten the nuts securely.
3. Start the machine and check the operation. If the drive cable is not engaging properly, shut the machine off and reposition the nuts on the cable to tighten the drive cable.

TROUBLESHOOTING

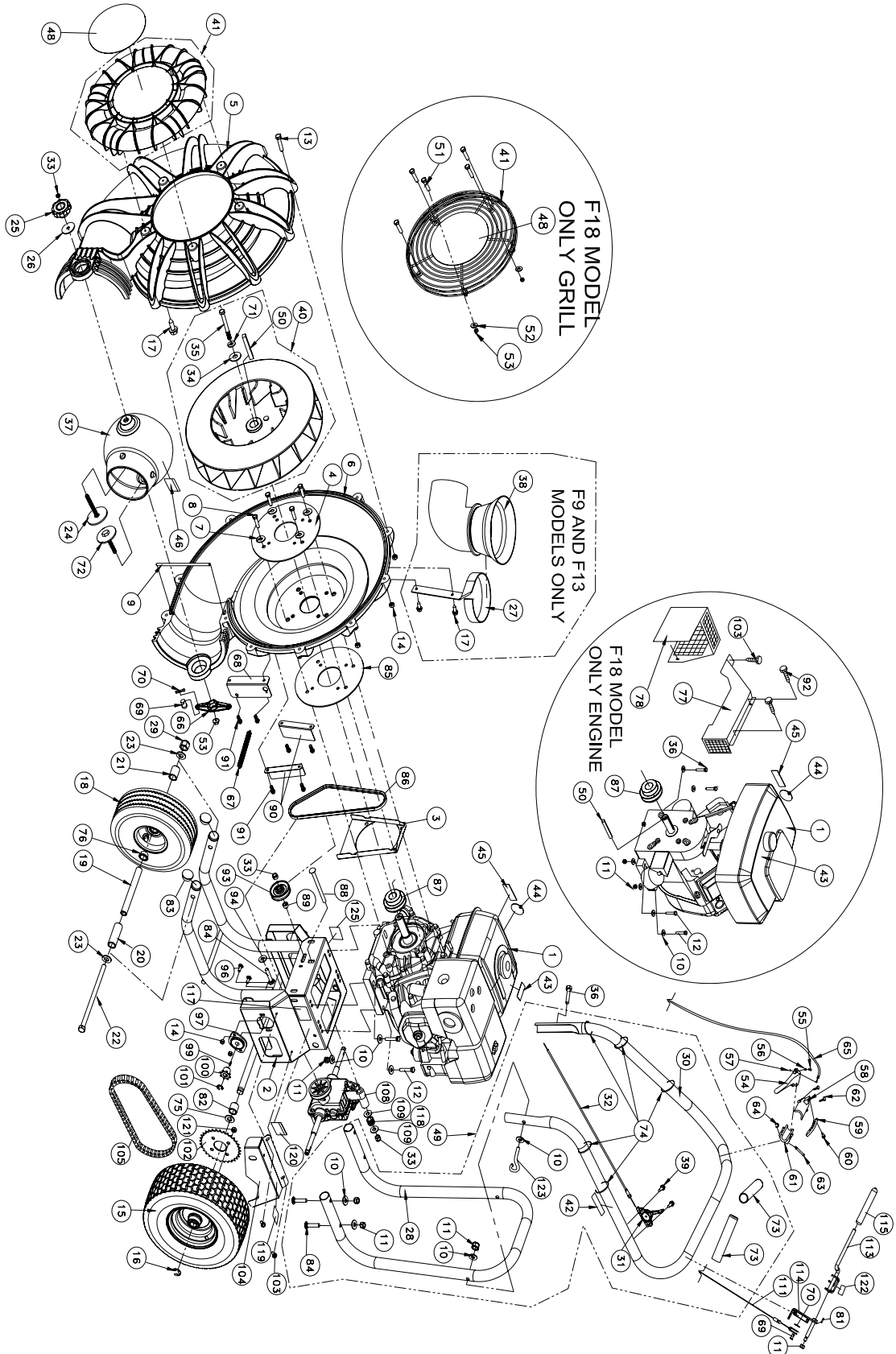
| Problem | Possible Cause | Solution |
|---------------------------------------|--------------------------------------------------------------------------------------------------------------------------------------------------------------------------------------------------------------------------------|-------------------------------------------------------------------------------------------------------------------------------------------------------------------------------------------------------------------------------------------|
| Abnormal vibration. | <ul style="list-style-type: none"> Loose or out of balance impeller. Debris in impeller. Loose engine. | <ul style="list-style-type: none"> Check impeller and replace if required. Clear debris with compressed air or a backpack blower (see below pictures).* Check engine. |
| Engine will not start. | <ul style="list-style-type: none"> Engine not in full choke position. Out of gasoline or bad, old gasoline. Spark Plug wire disconnected. Gas valve off. Dirty air cleaner. | <ul style="list-style-type: none"> Check choke position. Check gasoline. Connect spark plug wire. Turn on gas valve. Clean or replace air cleaner. Contact a qualified service person. |
| Engine is locked, will not pull over. | <ul style="list-style-type: none"> Engine problem. | <ul style="list-style-type: none"> Contact an engine servicing dealer for engine problems. |
| Aim-N-Shoot™ lever sticking | <ul style="list-style-type: none"> Debris stuck around cone Cone adjustment knob too tight Adaptor mount nut (item 38) too tight | <ul style="list-style-type: none"> Clean debris Apply silicone based lubricant to pivot points Loosen manual adjustment knob Loosen nut |
| No self propelling | <ul style="list-style-type: none"> Drive lever not engaged Drive belt worn or broken Drive chain off the sprockets Drive cable is out of adjustment | <ul style="list-style-type: none"> Engage drive lever Check drive belt Check drive chain Check drive cable (see page 13) |
| Self Propelled drive will not release | <ul style="list-style-type: none"> Improper drive cable adjustment, or cable is kinked | <ul style="list-style-type: none"> Check the drive cable (see page 13) |
| Noisy or broken chain | <ul style="list-style-type: none"> No chain or lubrication Chain tension | <ul style="list-style-type: none"> Lubricate chain Check drive chain (see page 13) |

*Using compressed air, or a Backpack blower, you can loosen or free debris easily from the impeller and housing, which can cause wear and tear on the machine. You can manually remove debris by taking off the front housing. Note: Always disconnect the spark plug when servicing.





ILLUSTRATED PARTS LIST





PARTS LIST

| ITEM NO. | DESCRIPTION | F1302SPH | | F902SPH | | F902SPS | | F1802SPV | |
|----------|-----------------------------------------------|-------------|------|-------------|------|-------------|------|-------------|------|
| | | PART NUMBER | QTY. | PART NUMBER | QTY. | PART NUMBER | QTY. | PART NUMBER | QTY. |
| 1 | ENGINE 13 HP HONDA GX390 | 440018 | 1 | - | - | - | - | - | - |
| | ENGINE 9 HP HONDA GX270 | - | - | 430287 | 1 | - | - | - | - |
| | ENGINE 9 HP HORZ SUBARU OHC | - | - | - | - | 430413 | 1 | - | - |
| | ENGINE 18 VANGUARD | - | - | - | - | - | - | 812240 | 1 |
| 2 | BASE ENGINE WA FSP | 440244-S | 1 | 440244-S | 1 | 440244-S | 1 | 440244-S | 1 |
| 3 | GUARD BELT UPPER FSP | 440209 | 1 | 440209 | 1 | 440209 | 1 | 440209 | 1 |
| 4 | PLATE REINFORCE HOUSING | 440010 | 1 | 440010 | 1 | 440010 | 1 | 440010 | 1 |
| 5 | HOUSING FRONT MOLDED | 440023 | 1 | 440023 | 1 | 440023 | 1 | 440023 | 1 |
| 6 | HOUSING BACK MOLDED | 440024 | 1 | 440024 | 1 | 440024 | 1 | 440024 | 1 |
| 7 | WASHER LOCK 3/8 S/T MED | 8177012 | 4 | 8177013 | 5 | 8177013 | 5 | 8177013 | 4 |
| 8 | SCREW CAP 3/8-16X 2 ZP | 8041054 | 4 | 8041054 | 4 | 8041054 | 4 | 8041054 | 4 |
| 9 | ROD HAND STOP | 440057 | 1 | 440057 | 1 | 440057 | 1 | 440057 | 1 |
| 10 | WASHER 5/16 FLATWASHER Z/P | 8171003 | 14 | 8171003 | 14 | 8171003 | 14 | 8171003 | 14 |
| 11 | NYLON INSERT LOCKNUT 5/16-18 | 8160002 | 11 | 8160002 | 11 | 8160002 | 11 | 8160002 | 11 |
| 12 | SCREWCAP 5/16-18 X 1.75 ZP | 8041031 | 4 | 8041031 | 4 | 8041031 | 4 | 8041031 | 2 |
| 13 | SCREWCAP 1/4-20 x 1 1/2 | 8041008 | 11 | 8041008 | 11 | 8041008 | 11 | 8041008 | 11 |
| 14 | NUT FLANGE 1/4-20 | 900455 | 15 | 900455 | 15 | 900455 | 15 | 900455 | 15 |
| 15 | WHEEL & TIRE 13" X5" PNEUMATIC SPROCK | 440219 | 2 | 440219 | 2 | 440219 | 2 | 440219 | 2 |
| 16 | RING RETAINING 3/4 | 850230 | 2 | 850230 | 2 | 850230 | 2 | 850230 | 2 |
| 17 | SCREW SM 1/4" X 3/4" TYPE AB HX WF | 8122082 | 7 | 8122082 | 7 | 8122082 | 7 | - | - |
| 18 | WHEEL ASSY 10" PNEUMATIC | 400295 | 1 | 400295 | 1 | 400295 | 1 | 400295 | 1 |
| 19 | SPACER FRONT AXLE | 440220 | 1 | 440220 | 1 | 440220 | 1 | 440220 | 1 |
| 20 | SPACER LH WHEEL FRONT | 440224 | 1 | 440224 | 1 | 440224 | 1 | 440224 | 1 |
| 21 | SPACER RH WHEEL FRONT | 440221 | 1 | 440221 | 1 | 440221 | 1 | 440221 | 1 |
| 22 | SCREWCAP 1/2-13 x 9 1/2" | 8041240 | 1 | 8041240 | 1 | 8041240 | 1 | 8041240 | 1 |
| 23 | WASHER FLAT 1/2" SAE | 8172011 | 2 | 8172011 | 2 | 8172011 | 2 | 8172011 | 2 |
| 24 | WASHER W/BOLT WA | 440075 | 1 | 440075 | 1 | 440075 | 1 | 440075 | 1 |
| 25 | KNOB 3/8-16 SOLID HUB | 811230 | 1 | 811230 | 1 | 811230 | 1 | 811230 | 1 |
| 26 | WASHER 2.25 OD x .515 ID x .134 ZP | 610308-P | 1 | 610308-P | 1 | 610308-P | 1 | 610308-P | 1 |
| 27 | BRACKET HOLDER WA | 440240 | 1 | 440240 | 1 | 440240 | 1 | - | - |
| 28 | HANDLE LOWER | 440034 | 1 | 440034 | 1 | 440034 | 1 | 440034 | 1 |
| 29 | NYLON INSERT LOCKNUT 1/2-13LT WT TH ZP | 8161044 | 1 | 8161044 | 1 | 8161044 | 1 | 8161044 | 1 |
| 30 | HANDLE UPPER | 440035 | 1 | 440035 | 1 | 440035 | 1 | 440035 | 1 |
| 31 | CONTROL THROTTLE | 440013 | 1 | 440013 | 1 | 440013 | 1 | 440013 | 1 |
| 32 | CABLE THROTTLE CONTROL | 440014 | 1 | 440014 | 1 | 440014 | 1 | 440178 | 1 |
| 33 | NUT LOCK 3/8-16 LT WT THIN ZP | 8161042 | 3 | 8161042 | 3 | 8161042 | 3 | 8161042 | 3 |
| 34 | WASHER 1.5 O.D.X 0.45 I.D. X 0.5 | 440176 | 1 | 440176 | 1 | 440176 | 1 | 440176 | 1 |
| 35 | SCREWCAP 3/8-24 X 3.5 GR. 8 (38 +/-2 ft-lbs.) | 440151 | 1 | - | - | - | - | - | - |
| | SCREWCAP 7/16-20 X 3.5 GR.8 (60 +/-2 ft-lbs) | - | - | 440150 | 1 | 440150 | 1 | - | - |
| | SCREWCAP 3/8-24 X 4 GR.8 (38 +/-2 ft-lbs) | - | - | - | - | - | - | 8042062 | 1 |
| 36 | SCREWCAP 5/16"-18 X 2" ZP | 8041032 | 1 | 8041032 | 1 | 8041032 | 1 | 8041032 | 2 |
| 37 | DIRECTOR CONE 5" | 440044-S | 1 | - | - | - | - | - | - |
| | DIRECTOR CONE 4" | - | - | 440046-S | 1 | 440046-S | 1 | - | - |
| | DIRECTOR CONE 6" | - | - | - | - | - | - | 440170-S | 1 |
| 38 | DIVERTOR FRONT | 440045-5 | 1 | 440045-4 | 1 | 440045-4 | 1 | - | - |
| 39 | SCREW SM #10-24X1/2" DRILL POINT | 8122064 | 2 | 8122064 | 2 | 8122064 | 2 | 8122064 | 2 |
| 40 | IMPELLER ASSEMBLY 17" | 440236 | 1 | 440236 | 1 | 440236 | 1 | - | - |
| | IMPELLER SERVICE ASSY FORCE 18HP | - | - | - | - | - | - | 440162 | 1 |
| 41 | GRILL FRONT BLOWER | 440067-1-S | 1 | 440067-1-S | 1 | 440067-1-S | 1 | 440171-S | 1 |
| 42 | LABEL THROTTLE CONTROL | 810656 | 1 | 810656 | 1 | 810656 | 1 | 810656 | 1 |
| 43 | LABEL FUEL EN/SP | - | - | - | - | 100261 | 1 | 100261 | 1 |
| 44 | LABEL READ | 890301 | 1 | 890301 | 1 | 890301 | 1 | 890301 | 1 |
| 45 | LABEL EAR EYE BREATHING | 890254 | 1 | 890254 | 1 | 890254 | 1 | 890254 | 1 |
| 46 | LABEL DANGER FLYING DEBRIS | 810736 | 1 | 810736 | 1 | 810736 | 1 | 810736 | 1 |
| 48 | LABEL FORCE | 440269 | 1 | 440269 | 1 | 440269 | 1 | 440269 | 1 |
| 49 | HANDLE ASSY | 440104 | 1 | 440104 | 1 | 440104 | 1 | 440104 | 1 |
| 50 | KEY 1/4" SQ x 3 1/4 | 9201128 | 1 | 9201128 | 1 | 9201128 | 1 | - | - |
| | KEY 1/4" SQ x 2 3/4 | - | - | - | - | - | - | 9201130 | 1 |
| 51 | SCREWCAP 1/4-20 X 1" HCS ZP | - | - | - | - | - | - | 8041006 | 5 |
| 52 | WASHER FLAT 1/4 | - | - | - | - | - | - | 8171002 | 5 |
| 53 | NUT LOCK 1/4"-20 HEX ZP | 8160001 | 1 | 8160001 | 1 | 8160001 | 1 | 8160001 | 6 |
| 54 | HANDLE DIVERTER FORCE | 440119 | 1 | 440119 | 1 | 440119 | 1 | 440119 | 1 |
| 55 | PIN LATCH DIVERTER | 440118 | 1 | 440118 | 1 | 440118 | 1 | 440118 | 1 |
| 56 | SPRING COMPRESSION 0.281 X 0.88 | 440129 | 1 | 440129 | 1 | 440129 | 1 | 440129 | 1 |
| 57 | RING RETAINING .122 DIA | 440125 | 1 | 440125 | 1 | 440125 | 1 | 440125 | 1 |
| 58 | SADDLE UPPER DIVERTER | 440115 | 1 | 440115 | 1 | 440115 | 1 | 440115 | 1 |
| 59 | PLATE LOCK DIVERTER | 440116 | 1 | 440116 | 1 | 440116 | 1 | 440116 | 1 |
| 60 | SCREW PLASTITE #6-19 X 5/8" | 440126 | 1 | 440126 | 1 | 440126 | 1 | 440126 | 1 |
| 61 | SADDLE LOWER DIVERTER | 440114 | 1 | 440114 | 1 | 440114 | 1 | 440114 | 1 |
| 62 | SCREW PLASTITE #10-14 X 1" | 440132 | 2 | 440132 | 2 | 440132 | 2 | 440132 | 2 |
| 63 | PIN PIVOT DIVERTER CONTROL | 440123 | 1 | 440123 | 1 | 440123 | 1 | 440123 | 1 |
| 64 | RING RETAINING 5/16 | 430327 | 1 | 430327 | 1 | 430327 | 1 | 430327 | 1 |



PARTS LIST

| ITEM NO. | DESCRIPTION | F1302SPH | | F902SPH | | F902SPS | | F1802SPV | |
|----------|-----------------------------------------|-------------|------|-------------|------|-------------|------|-------------|------|
| | | PART NUMBER | QTY. | PART NUMBER | QTY. | PART NUMBER | QTY. | PART NUMBER | QTY. |
| 65 | CABLE ASSY | 440117 | 1 | 440117 | 1 | 440117 | 1 | 440117 | 1 |
| 66 | DIVERter PIVOT ADAPTOR | 440121 | 1 | 440121 | 1 | 440121 | 1 | 440121 | 1 |
| 67 | SPRING EXTENSION 0.468 X 5.25 | 440130 | 1 | 440130 | 1 | 440130 | 1 | 440130 | 1 |
| 68 | BRACKET DIVERter FORCE | 440212 | 1 | 440212 | 1 | 440212 | 1 | 440212 | 1 |
| 69 | PIN CLEVIS 1/4 X 3/4 | 440124 | 2 | 440124 | 2 | 440124 | 2 | 440124 | 2 |
| 70 | HITCH PIN CLIP .051 X 3/4" | 440193 | 2 | 440193 | 2 | 440193 | 2 | 440193 | 2 |
| 71 | WASHER LOCK 3/8 S/T MED | 8177012 | 1 | - | - | - | - | 8177012 | 1 |
| | WASHER LOCK 7/16 S/T MED | - | - | 8177013 | 1 | 8177013 | 1 | - | - |
| 72 | ADAPTOR MOUNT WA | 440122 | 1 | 440122 | 1 | 440122 | 1 | 440122 | 1 |
| 73 | GRIP 1-1/4" ID x 9.5" LONG | 440146 | 2 | 440146 | 2 | 440146 | 2 | 440146 | 2 |
| 74 | TY-WRAP | 900407 | 5 | 900407 | 5 | 900407 | 5 | 900407 | 5 |
| 75 | WASHER .765 ID X 1.25 OD X0.6" | 850238 | 2 | 850238 | 2 | 850238 | 2 | 850238 | 2 |
| 76 | FORCE WHEEL BEARING .751 ID | 440055 | 2 | 440055 | 2 | 440055 | 2 | 440055 | 2 |
| 77 | GUARD MANIFOLD | - | - | - | - | - | - | 812243 | 1 |
| 78 | GUARD MUFFLER | - | - | - | - | - | - | 812242 | 1 |
| 81 | ROLL PIN | 8195096 | 1 | 8195096 | 1 | 8195096 | 1 | 8195096 | 1 |
| 82 | SPACER REAR WHEEL SP | 440225 | 2 | 440225 | 2 | 440225 | 2 | 440225 | 2 |
| 83 | PLUG | 791056 | 2 | 791056 | 2 | 791056 | 2 | 791056 | 2 |
| 84 | CARRIAGE BOLT 3/8"-16 X 1 3/4" ZP | 8024061 | 5 | 8024061 | 5 | 8024061 | 5 | 8024061 | 5 |
| 85 | SPACER ENGINE FACE | 440174 | 1 | 440174 | 1 | 440174 | 1 | 440174 | 1 |
| 86 | BELT 3L29 | 440215 | 1 | 440215 | 1 | 440215 | 1 | 440215 | 1 |
| 87 | SPACER HUB 1" ID X 1.25" W/PULLEY | 440213 | 1 | 440213 | 1 | 440213 | 1 | - | - |
| | SPACER HUB 1" ID X 1.25" W/PULLEY FSP18 | - | - | - | - | - | - | 440214 | 1 |
| 88 | CARRIAGE BOLT 3/8-16 X 5" ZP | 8024161 | 1 | 8024161 | 1 | 8024161 | 1 | 8024161 | 1 |
| 89 | TUBE SPACER .625" OD X .357 LONG | 440228 | 1 | 440228 | 1 | 440228 | 1 | 440228 | 1 |
| 90 | GUARD BELT LOWER FSP | 440210 | 2 | 440210 | 2 | 440210 | 2 | 440210 | 2 |
| 91 | SCREW PLASTITE 1/4-10 X 3/4 HWH ZP | 840082 | 6 | 840082 | 6 | 840082 | 6 | 840082 | 6 |
| 92 | SCREW SM 1/4" X 1" DRILL PT | - | - | - | - | - | - | 430208 | 2 |
| 93 | PULLER V IDLER 2.5 | 510137 | 1 | 510137 | 1 | 510137 | 1 | 510137 | 1 |
| 94 | WASHER 1.00" OD X .380 SQ HOLE | 440227 | 1 | 440227 | 1 | 440227 | 1 | 440227 | 1 |
| 96 | CARRIAGE BOLT 1/4"-20 X 3/4" | 8024021 | 4 | 8024021 | 4 | 8024021 | 4 | 8024021 | 4 |
| 97 | BEARING 1/2" STEEL PRESSED HOUSING | 891025 | 2 | 891025 | 2 | 891025 | 2 | 891025 | 2 |
| 99 | KEY WOODRUFF 1/8" X 1/2" | 510180 | 2 | 510180 | 2 | 510180 | 2 | 510180 | 2 |
| 100 | SPROCKET 8 TOOTH | 891022 | 2 | 891022 | 2 | 891022 | 2 | 891022 | 2 |
| 101 | RETAINING RING 1/2" | 350146 | 2 | 350146 | 2 | 350146 | 2 | 350146 | 2 |
| 102 | SPROCKET 32T #43 1.594 BORE | 440218 | 2 | 440218 | 2 | 440218 | 2 | 440218 | 2 |
| 103 | SCREW SELF TAP 1/4"-20 X 5/8" | 890359 | 4 | 890359 | 4 | 890359 | 4 | 890359 | 6 |
| 104 | CHAIN GUARD LH | 440206-S | 1 | 440206-S | 1 | 440206-S | 1 | 440206-S | 1 |
| | CHAIN GUARD RH | 440207-S | 1 | 440207-S | 1 | 440207-S | 1 | 440207-S | 1 |
| 105 | CHAIN #43X44 PITCHES | 440217 | 2 | 440217 | 2 | 440217 | 2 | 440217 | 2 |
| 108 | TRANS SINGLE SPEED W/CLUTCH | 440216 | 1 | 440216 | 1 | 440216 | 1 | 440216 | 1 |
| 109 | WASHER 3/8" SAE | 8172009 | 2 | 8172009 | 2 | 8172009 | 2 | 8172009 | 2 |
| 111 | CLUTCH CABLE FORCE SP | 440243 | 1 | 440243 | 1 | 440243 | 1 | 440243 | 1 |
| 113 | CLUTCH CONTROL ARM | 440277 | 1 | 440277 | 1 | 440277 | 1 | 440277 | 1 |
| 114 | CLUTCH CONTROL BRACKET | 440245 | 1 | 440245 | 1 | 440245 | 1 | 440245 | 1 |
| 115 | GRIP CLUTCH CONTROL FSP | 440242 | 1 | 440242 | 1 | 440242 | 1 | 440242 | 1 |
| 117 | SPARK ARRESTOR LABEL | 100252 | 1 | 100252 | 1 | 100252 | 1 | 100252 | 1 |
| 118 | SPRING LEVER GZ | 610429 | 1 | 610429 | 1 | 610429 | 1 | 610429 | 1 |
| 119 | LABEL OIL CHAIN | 830502 | 2 | 830502 | 2 | 830502 | 2 | 830502 | 2 |
| 120 | LABEL DANGER | 900327 | 2 | 900327 | 2 | 900327 | 2 | 900327 | 2 |
| 121 | NUT LOCK 5/16-24 SER HEX WSHR FLNG | 440274 | 8 | 440274 | 8 | 440274 | 8 | 440274 | 8 |
| 122 | LABEL CLUTCH DRIVE | 500176 | 1 | 500176 | 1 | 500176 | 1 | 500176 | 1 |
| 123 | EYEBOLT PIGTAIL 5/16"-18 X 1 1/4" | 440280 | 1 | 440280 | 1 | 440280 | 1 | 440280 | 1 |
| 125 | LABEL MADE IN U.S.A. | 520116 | 1 | 520116 | 1 | 520116 | 1 | 520116 | 1 |