



ATD-5830

3/16" AIR RIVETER INSTRUCTION MANUAL

Safety Precautions

- Do not use the tool outside of the design intent.
- Never modify the tool for any other purpose, or for its use.
- Normal use of this product is likely to expose the user to dust and /or microscopic particles containing chemicals known to the State of California to cause cancer, birth defects or other reproductive harm. Always wear appropriate safety equipment and clothing when using this product. Study, understand and follow all instructions provided with this product.
- Always wear ANSI approved goggles when using this product.
- Always select the correct accessories of the correct size and design for the job that you are attempting to perform.
- Always work in a clean, safe, well-lit, organized and adequately equipped area.
- Do not begin repairs without assurance that vehicle is in secure position and will not move during repair.

Important:

Read these instructions carefully before installing, operating, servicing or repairing this tool. Keep these instructions in a safe accessible place.

Unpacking:

When unpacking this unit, check the parts diagram and part number listing to make sure all parts are included. If any parts are missing or damaged please call your distributor.

Product Information:

- Powerful durable, high speed production tool
- Quick release air valve permits cylinder to return quickly for high speed assembly operations: Prevents overloading for long life.
- Performs well at any angle
- Gets into hard-to-reach areas
- Provides quick, quiet and comfortable operation preventing user fatigue
- Includes 3/16"(4.8mm), 5/32"(4mm), 1/8"(3.2mm) & 3/32"(2.4mm) nosepieces

Specifications:

Rivet Capacity: 3/16"

Overall Length: 10-5/8"(270mm)

Net Weight: 3lbs(1.41kg)

Stroke: 1/2"(14mm)

Motor: 1/2hp

Air Inlet Thread NPT: 1/4"

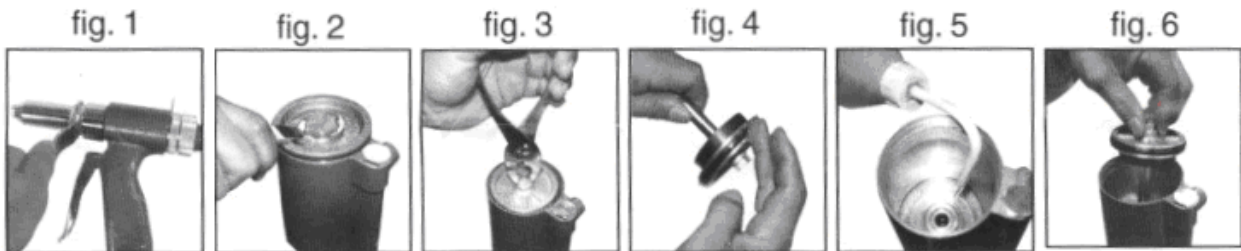
Air Hose I.D. Size: 3/8"(10mm)

Avg. Air Consumption: 4cfm

Air Pressure: 90-120psi

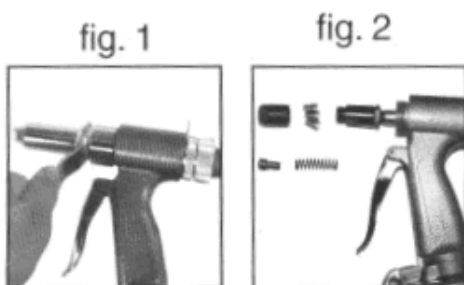
Maintenance/Adding Oil for Hydraulic Riveter

1. Turn off air supply
2. Use spanner wrench to dismantle the riveter head (fig. 1).
3. Use spanner wrench to open bottom cover of the riveter (fig. 2).
4. Remove piston from cylinder (fig. 3).
5. Clean inside of the cylinder and lubricate cover seal (fig. 4).
6. Lubricate the intake with oil until full (fig. 5).
7. Clean piston stem and add grease on the inner wall of the cylinder and the ring.
8. Reassemble (fig.6).

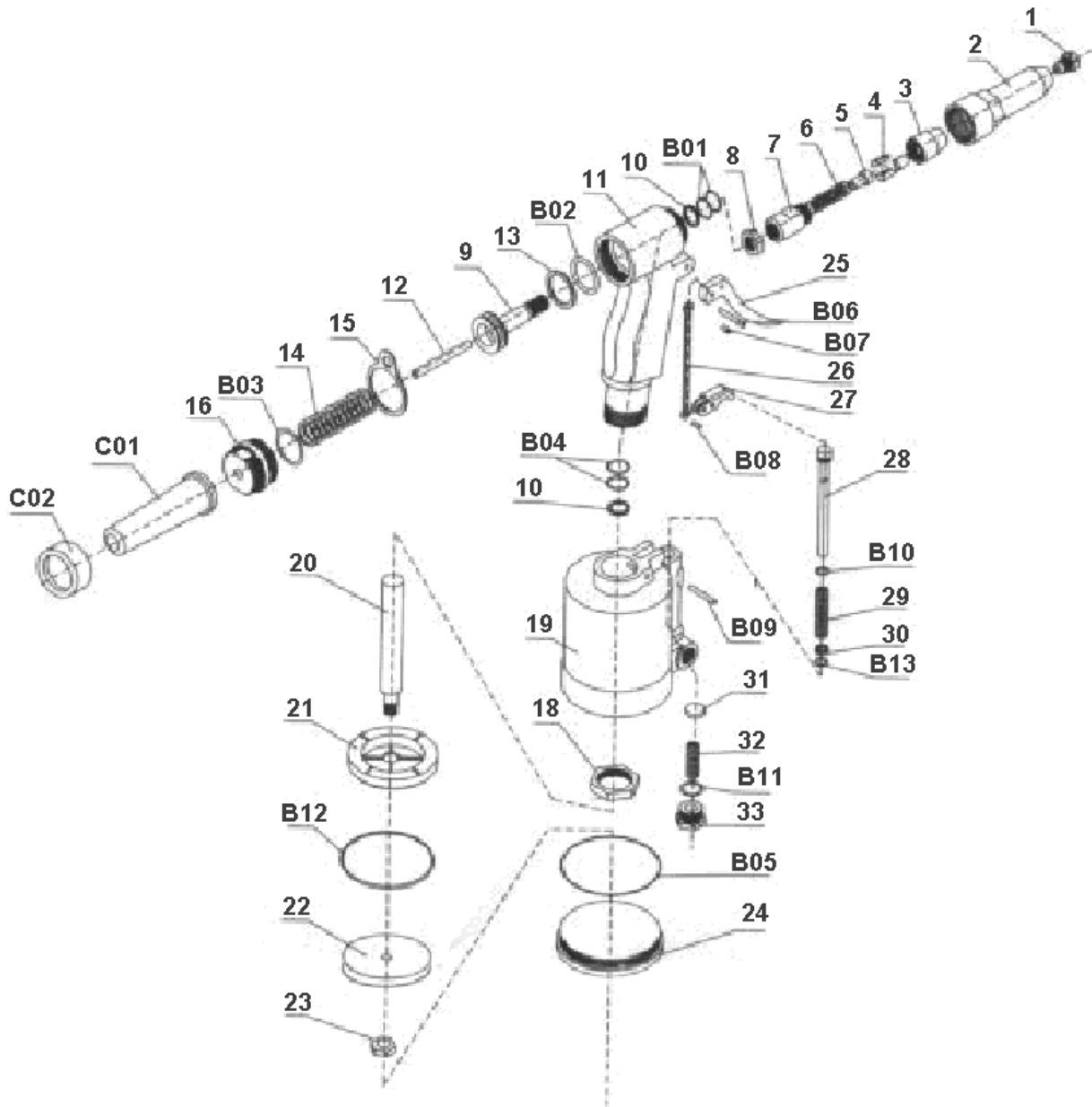


Cleaning/Maintenance for the Head of Riveter

1. Turn off air supply. Assure all pressure is released prior to disassembly.
2. Use spanner wrench to dismantle the riveter head (fig.1).
3. Use spanner wrench to disassemble (fig. 2).
4. Clean all inner/assembly parts of the riveter head with a brush.
5. Reassemble the inner/assembly parts.
6. Oil the parts and reassemble riveter head completely.



ATD-5830





ORDERING PART#	ITEM#	PART DESCRIPTION
PRT5830-01	1	NOSEPIECE
PRT5830-02	2	OUTER CYLINDER
PRT5830-03	3	JAW CARRIER
PRT5830-04	4	JAW
PRT5830-05	5	JAW PUSHER
PRT5831-06	6	JAW PUSH SPRING
PRT5830-07	7	JAW CYLINDER
PRT5830-08	8	CASE LOCK NUT
PRT5830-09	9	PRINCIPAL AXIS
PRT5830-10	10	PLASTIC RING
PRT5830-11	11	HANDLE
PRT5830-12	12	LEAD AXIS
PRT5830-13	13	PLASTIC RING
PRT5830-14	14	RESTORE SPRING
PRT5830-15	15	POTHOOK
PRT5830-16	16	AIRPROOF LID
PRT5830-18	18	LOCK NUT
PRT5830-19	19	AIR CYLINDER
PRT5830-20	20	POLE PISTON
PRT5830-21	21	CUSHION
PRT5830-22	22	PISTON
PRT5830-23	23	NUT
PRT5830-24	24	AIR CYLINDER LID
PRT5830-25	25	TRIGGER

ORDERING PART#	ITEM#	PART DESCRIPTION
PRT5830-26	26	LINK
PRT5830-27	27	PRESS PLANK
PRT5830-28	28	AIR VALVE
PRT5830-29	29	VALVE SPRING
PRT5830-30	30	COPPER WASH
PRT5830-31	31	AIRPROOF PLASTIC
PRT5830-32	32	AIRPROOF SPRING
PRT5830-33	33	AIRPROOF NUT
PRT5830-B01	B01	O-RING
PRT5830-B02	B02	O-RING
PRT5830-B03	B03	O-RING
PRT5830-B04	B04	O-RING
PRT5830-B05	B05	O-RING
PRT5830-B06	B06	SPRING PIN
PRT5830-B07	B07	SPRING PIN
PRT5830-B08	B08	SPRING PIN
PRT5830-B09	B09	SPRING PIN
PRT5830-B10	B10	O-RING
PRT5830-B11	B11	O-RING
PRT5830-B12	B12	O-RING
PRT5830-B13	B13	O-RING
PRT5830-C01	C01	BOTTLE
PRT5830-C02	C02	NUT